



Columbiana County, Ohio Farms with American Indian or Alaska Native Producers^a

Data not available at this geographic level for farms with American Indian or Alaska Native Producers.

^a This race alone or in combination with other races.



Columbiana County, Ohio Farms with Asian Producers^a

Data not available at this geographic level for farms with Asian Producers.

^a This race alone or in combination with other races.



Columbiana County, Ohio Farms with Black or African American Producers^a

Data not available at this geographic level for farms with Black or African American Producers.

^a This race alone or in combination with other races.



Columbiana County, Ohio Farms with Native Hawaiian or Other Pacific Islander Producers^a

Data not available at this geographic level for farms with Native Hawaiian or Other Pacific Islander Producers.

^a This race alone or in combination with other races.



Columbiana County, Ohio Farms with White Producers^a

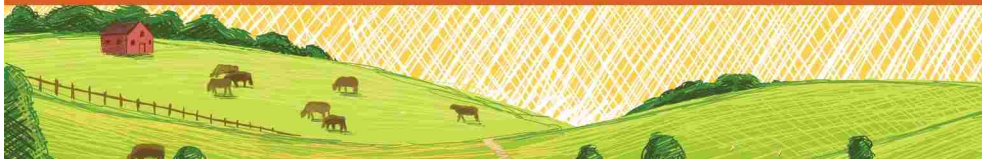
Data not available at this geographic level for farms with White Producers.

^a This race alone or in combination with other races.



Columbiana County, Ohio Farms with Hispanic, Latino, or Spanish Producers

Data not available at this geographic level for farms with Hispanic, Latino, or Spanish Producers.



Columbiana County, Ohio

Farms with Female Producers

Total and Per Farm Overview, 2017

	Farms with Female Producers	All Farms
Number of farms	718	1,227
Land in farms (acres)	62,590	142,422
Average size of farm (acres)	87	116
Total	(\$)	(\$)
Market value of products sold	57,692,000	106,666,000
Government payments	617,000	1,687,000
Farm-related income	1,977,000	3,889,000
Total farm production expenses	49,813,000	92,225,000
Net cash farm income	10,474,000	20,018,000
Per farm average	(\$)	(\$)
Market value of products sold	80,351	86,932
Government payments (average per farm receiving)	5,717	7,090
Farm-related income	7,910	8,859
Total farm production expenses	69,378	75,163
Net cash farm income	14,588	16,314

Share of Sales by Type (%)

Crops	26
Livestock, poultry, and products	74

Land in Farms by Use (%) ^b

Cropland	62
Pastureland	13
Woodland	16
Other	8

Land Use Practices (% of farms)

No till	22
Reduced till	10
Intensive till	12
Cover crop	12

Farms by Value of Sales

	Number	Percent ^b
Less than \$2,500	316	44
\$2,500 to \$4,999	108	15
\$5,000 to \$9,999	68	9
\$10,000 to \$24,999	69	10
\$25,000 to \$49,999	46	6
\$50,000 to \$99,999	32	4
\$100,000 or more	79	11
Total	718	100

Farms by Size

	Number	Percent ^b
1 to 9 acres	117	16
10 to 49 acres	312	43
50 to 179 acres	223	31
180 to 499 acres	45	6
500 to 999 acres	13	2
1,000 + acres	8	1
Total	718	100



2017 CENSUS OF AGRICULTURE Race/Ethnicity/Gender Profile

Market Value of Agricultural Products Sold			Total Producers ^c	772
	Sales (\$1,000)	No. of Farms		
Total	57,692	718	Age	
			<35	81
			35 – 64	503
			65 and older	188
Crops	14,927	402	Race	
Grains, oilseeds, dry beans, dry peas	8,570	184	American Indian/Alaska Native	1
Tobacco	-	-	Asian	4
Cotton and cottonseed	-	-	Black/African American	-
Vegetables, melons, potatoes, sweet potatoes	(D)	25	Native Hawaiian/Pacific Islander	1
Fruits, tree nuts, berries	1,722	19	White	766
Nursery, greenhouse, floriculture, sod	1,490	14	More than one race	-
Cultivated Christmas trees, short rotation woody crops	(D)	5		
Other crops and hay	2,252	248	Primary occupation	
			Farming	269
Livestock, poultry, and products	42,765	385	Other	503
Poultry and eggs	19,369	122	Days worked off farm	
Cattle and calves	3,844	224	None	249
Milk from cows	18,886	43	1 to 199	192
Hogs and pigs	229	45	200 +	331
Sheep, goats, wool, mohair, milk	237	58		
Horses, ponies, mules, burros, donkeys	146	33	Other characteristics	
Aquaculture	-	-	Hispanic/Latino/Spanish	2
Other animals and animal products	54	27	With military service	4
			New and beginning farmers	226
			Average age (years)	55.2
Top Crops in Acres ^d		Percent of farms that:		
Forage (hay/haylage), all	13,565	Have internet access	75	
Soybeans for beans	8,482			
Corn for grain	7,419	Farm organically	(Z)	
Corn for silage	2,719			
Wheat for grain, all	1,906	Sell directly to consumers	9	
Livestock Inventory (Dec 31, 2017)		Hire farm labor	24	
Broilers and other meat-type chickens	512,833			
Cattle and calves	15,066	Are family farms	97	
Goats	479			
Hogs and pigs	688			
Horses and ponies	1,177			
Layers	21,662			
Pullets	(D)			
Sheep and lambs	1,377			
Turkeys	56			

Demographic Data in the Census of Agriculture

The agriculture census is a complete count of U.S. farms and ranches and the people who operate them. Demographic information is available at national, state, and county levels, and for classes of farm and congressional districts. Results from the 2017 Census and earlier are available through the searchable database Quick Stats, the new Census Data Query Tool, downloadable PDF reports, maps, and topic-specific Highlights and Profiles.

See also the video "What's New in the 2017 Census?" (www.nass.usda.gov/Newsroom/VideoFeatures/index.php).

See 2017 Census of Agriculture, U.S. Summary and State Data, for complete footnotes, explanations, definitions, commodity descriptions, and methodology.

^a This race alone or in combination with other races. ^b May not add to 100% due to rounding. ^c Data collected for a maximum of four producers per farm.

^d Crop commodity names may be shortened; see full names at www.nass.usda.gov/go/cropnames.pdf. ^e Position below the line does not indicate rank.

(D) Withheld to avoid disclosing data for individual operations. (NA) Not available. (Z) Less than half of the unit shown. (-) Represents zero.