

Ottawa County, Ohio Farms with American Indian or Alaska Native Producers^a

Data not available at this geographic level for farms with American Indian or Alaska Native Producers.

^a This race alone or in combination with other races.



Ottawa County, Ohio Farms with Asian Producers^a

Data not available at this geographic level for farms with Asian Producers.

^a This race alone or in combination with other races.



Ottawa County, Ohio Farms with Black or African American Producers^a

Data not available at this geographic level for farms with Black or African American Producers.

^a This race alone or in combination with other races.



Ottawa County, Ohio Farms with Native Hawaiian or Other Pacific Islander Producers^a

Data not available at this geographic level for farms with Native Hawaiian or Other Pacific Islander Producers.

^a This race alone or in combination with other races.



Ottawa County, Ohio Farms with White Producers^a

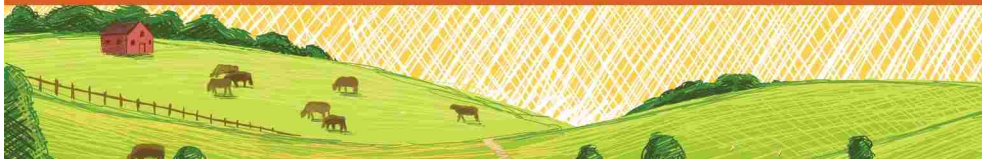
Data not available at this geographic level for farms with White Producers.

^a This race alone or in combination with other races.



Ottawa County, Ohio Farms with Hispanic, Latino, or Spanish Producers

Data not available at this geographic level for farms with Hispanic, Latino, or Spanish Producers.



Ottawa County, Ohio

Farms with Female Producers

Total and Per Farm Overview, 2017

	Farms with Female Producers	All Farms
Number of farms	197	551
Land in farms (acres)	34,133	121,498
Average size of farm (acres)	173	221
Total	(\$)	(\$)
Market value of products sold	15,953,000	59,220,000
Government payments	1,035,000	3,064,000
Farm-related income	910,000	3,921,000
Total farm production expenses	14,390,000	55,812,000
Net cash farm income	3,508,000	10,394,000
Per farm average	(\$)	(\$)
Market value of products sold	80,981	107,477
Government payments (average per farm receiving)	8,770	7,857
Farm-related income	9,995	12,179
Total farm production expenses	73,047	101,291
Net cash farm income	17,805	18,865

Share of Sales by Type (%)

Crops	99
Livestock, poultry, and products	1

Land in Farms by Use (%) ^b

Cropland	95
Pastureland	1
Woodland	2
Other	2

Land Use Practices (% of farms)

No till	41
Reduced till	8
Intensive till	15
Cover crop	11

Farms by Value of Sales

	Number	Percent ^b
Less than \$2,500	70	36
\$2,500 to \$4,999	18	9
\$5,000 to \$9,999	26	13
\$10,000 to \$24,999	21	11
\$25,000 to \$49,999	11	6
\$50,000 to \$99,999	11	6
\$100,000 or more	40	20
Total	197	100

Farms by Size

	Number	Percent ^b
1 to 9 acres	47	24
10 to 49 acres	66	34
50 to 179 acres	40	20
180 to 499 acres	23	12
500 to 999 acres	13	7
1,000 + acres	8	4
Total	197	100



2017 CENSUS OF AGRICULTURE Race/Ethnicity/Gender Profile

Market Value of Agricultural Products Sold			Total Producers ^c	208
	Sales (\$1,000)	No. of Farms		
Total	15,953	197	Age	
			<35	35
			35 – 64	110
			65 and older	63
Crops	15,758	116	Race	
Grains, oilseeds, dry beans, dry peas	11,513	89	American Indian/Alaska Native	-
Tobacco	-	-	Asian	-
Cotton and cottonseed	-	-	Black/African American	-
Vegetables, melons, potatoes, sweet potatoes	1,659	8	Native Hawaiian/Pacific Islander	-
Fruits, tree nuts, berries	210	10	White	208
Nursery, greenhouse, floriculture, sod	1,803	7	More than one race	-
Cultivated Christmas trees, short rotation woody crops	-	-	Primary occupation	
Other crops and hay	574	32	Farming	62
			Other	146
Livestock, poultry, and products	195	57	Days worked off farm	
Poultry and eggs	6	18	None	78
Cattle and calves	106	19	1 to 199	45
Milk from cows	-	-	200 +	85
Hogs and pigs	22	13	Other characteristics	
Sheep, goats, wool, mohair, milk	25	17	Hispanic/Latino/Spanish	3
Horses, ponies, mules, burros, donkeys	23	3	With military service	1
Aquaculture	-	-	New and beginning farmers	77
Other animals and animal products	13	8		
			Average age (years)	54.0
Top Crops in Acres ^d			Demographic Data in the Census of Agriculture	
Soybeans for beans	20,930	Have internet access	86	The agriculture census is a complete count of U.S. farms and ranches and the people who operate them. Demographic information is available at national, state, and county levels, and for classes of farm and congressional districts. Results from the 2017 Census and earlier are available through the searchable database Quick Stats, the new Census Data Query Tool, downloadable PDF reports, maps, and topic-specific Highlights and Profiles. See also the video “What’s New in the 2017 Census?”(www.nass.usda.gov/Newsroom/VideoFeatures/index.php).
Corn for grain	5,184	Farm organically	1	
Forage (hay/haylage), all	1,615	Sell directly to consumers	8	
Wheat for grain, all	1,599	Hire farm labor	18	
Vegetables harvested, all	707	Are family farms	97	
Livestock Inventory (Dec 31, 2017)				
Broilers and other meat-type chickens	-			
Cattle and calves	192			
Goats	60			
Hogs and pigs	125			
Horses and ponies	219			
Layers	985			
Pullets	-			
Sheep and lambs	274			
Turkeys	-			

See 2017 Census of Agriculture, U.S. Summary and State Data, for complete footnotes, explanations, definitions, commodity descriptions, and methodology.

^a This race alone or in combination with other races. ^b May not add to 100% due to rounding. ^c Data collected for a maximum of four producers per farm.

^d Crop commodity names may be shortened; see full names at www.nass.usda.gov/go/cropnames.pdf. ^e Position below the line does not indicate rank.

(D) Withheld to avoid disclosing data for individual operations. (NA) Not available. (Z) Less than half of the unit shown. (-) Represents zero.