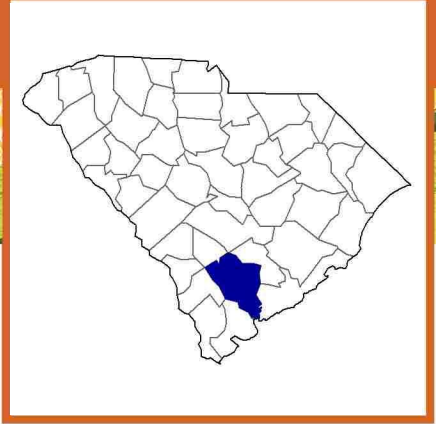


## Colleton County, South Carolina Farms with American Indian or Alaska Native Producers<sup>a</sup>

**Data not available at this geographic level for farms with American Indian or Alaska Native Producers.**

<sup>a</sup> This race alone or in combination with other races.



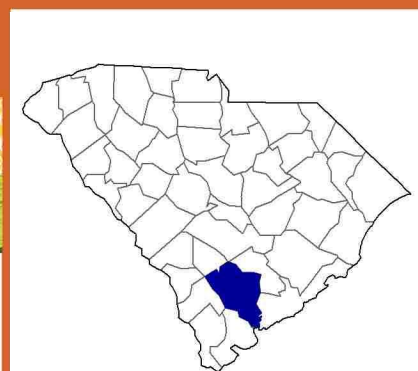
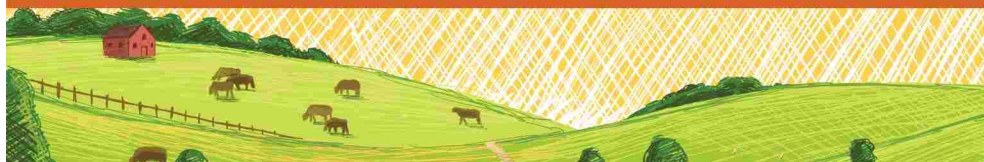


## Colleton County, South Carolina Farms with Asian Producers<sup>a</sup>

Data not available at this geographic level for farms with Asian Producers.

<sup>a</sup> This race alone or in combination with other races.





## Colleton County, South Carolina Farms with Black or African American Producers<sup>a</sup>

### Total and Per Farm Overview, 2017

	Farms with Black/African American Producers	All Farms
Number of farms	54	459
Land in farms (acres)	3,632	168,095
Average size of farm (acres)	67	366
<b>Total</b>	<b>(\$)</b>	<b>(\$)</b>
Market value of products sold	251,000	20,318,000
Government payments	1,000	724,000
Farm-related income	49,000	5,294,000
Total farm production expenses	619,000	26,204,000
Net cash farm income	(D)	132,000
<b>Per farm average</b>	<b>(\$)</b>	<b>(\$)</b>
Market value of products sold	4,656	44,266
Government payments (average per farm receiving)	200	9,786
Farm-related income	4,926	41,041
Total farm production expenses	11,457	57,090
Net cash farm income	(D)	288

### Share of Sales by Type (%)

Crops	(D)
Livestock, poultry, and products	(D)

### Land in Farms by Use (%)<sup>b</sup>

Cropland	29
Pastureland	(D)
Woodland	(D)
Other	10

### Land Use Practices (% of farms)

No till	13
Reduced till	-
Intensive till	13
Cover crop	6

### Farms by Value of Sales

	Number	Percent <sup>b</sup>
Less than \$2,500	27	50
\$2,500 to \$4,999	15	28
\$5,000 to \$9,999	3	6
\$10,000 to \$24,999	7	13
\$25,000 to \$49,999	2	4
\$50,000 to \$99,999	-	-
\$100,000 or more	-	-
<b>Total</b>	<b>54</b>	<b>100</b>

### Farms by Size

	Number	Percent <sup>b</sup>
1 to 9 acres	15	28
10 to 49 acres	23	43
50 to 179 acres	6	11
180 to 499 acres	10	19
500 to 999 acres	-	-
1,000 + acres	-	-
<b>Total</b>	<b>54</b>	<b>100</b>



# 2017 CENSUS OF AGRICULTURE Race/Ethnicity/Gender Profile

Market Value of Agricultural Products Sold			Total Producers <sup>c</sup>	68
	Sales (\$1,000)	No. of Farms		
<b>Total</b>	<b>251</b>	<b>54</b>	<b>Sex</b>	
			Male	64
			Female	4
<b>Crops</b>	<b>(D)</b>	<b>21</b>	<b>Age</b>	
Grains, oilseeds, dry beans, dry peas	76	5	<35	-
Tobacco	-	-	35 – 64	24
Cotton and cottonseed	-	-	65 and older	44
Vegetables, melons, potatoes, sweet potatoes	(D)	9		
Fruits, tree nuts, berries	4	7		
Nursery, greenhouse, floriculture, sod	-	-		
Cultivated Christmas trees, short rotation	-	-		
woody crops	-	-		
Other crops and hay	(D)	6	<b>Primary occupation</b>	
			Farming	39
			Other	29
<b>Livestock, poultry, and products</b>	<b>(D)</b>	<b>33</b>	<b>Days worked off farm</b>	
Poultry and eggs	4	4	None	22
Cattle and calves	(D)	23	1 to 199	22
Milk from cows	-	-	200 +	24
Hogs and pigs	17	14		
Sheep, goats, wool, mohair, milk	(D)	2		
Horses, ponies, mules, burros, donkeys	(D)	2		
Aquaculture	-	-		
Other animals and animal products	-	-		
			<b>Other characteristics</b>	
			Hispanic/Latino/Spanish	-
			With military service	29
			New and beginning farmers	4
			<b>Average age (years)</b>	<b>70.8</b>
<b>Top Crops in Acres <sup>d</sup></b>		<b>Percent of farms that:</b>		
Corn for grain	200	Have internet access	<b>39</b>	
Forage (hay/haylage), all	143			
Vegetables harvested, all	22	Farm organically	<b>-</b>	
Watermelons	(D)			
Grapes	2			
		Sell directly to consumers	<b>11</b>	
<b>Livestock Inventory (Dec 31, 2017)</b>				
Broilers and other meat-type chickens	-	Hire farm labor	<b>15</b>	
Cattle and calves	(D)			
Goats	26	Are family farms	<b>98</b>	
Hogs and pigs	293			
Horses and ponies	6			
Layers	160			
Pullets	180			
Sheep and lambs	-			
Turkeys	-			

## Demographic Data in the Census of Agriculture

The agriculture census is a complete count of U.S. farms and ranches and the people who operate them. Demographic information is available at national, state, and county levels, and for classes of farm and congressional districts. Results from the 2017 Census and earlier are available through the searchable database Quick Stats, the new Census Data Query Tool, downloadable PDF reports, maps, and topic-specific Highlights and Profiles.

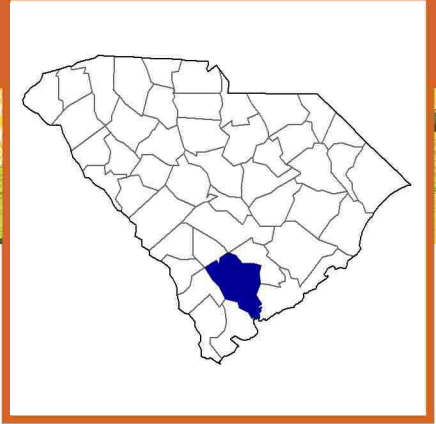
See also the video "What's New in the 2017 Census?" ([www.nass.usda.gov/Newsroom/VideoFeatures/index.php](http://www.nass.usda.gov/Newsroom/VideoFeatures/index.php)).

See 2017 Census of Agriculture, U.S. Summary and State Data, for complete footnotes, explanations, definitions, commodity descriptions, and methodology.

<sup>a</sup> This race alone or in combination with other races. <sup>b</sup> May not add to 100% due to rounding. <sup>c</sup> Data collected for a maximum of four producers per farm.

<sup>d</sup> Crop commodity names may be shortened; see full names at [www.nass.usda.gov/go/cropnames.pdf](http://www.nass.usda.gov/go/cropnames.pdf). <sup>e</sup> Position below the line does not indicate rank.

(D) Withheld to avoid disclosing data for individual operations. (NA) Not available. (Z) Less than half of the unit shown. (-) Represents zero.



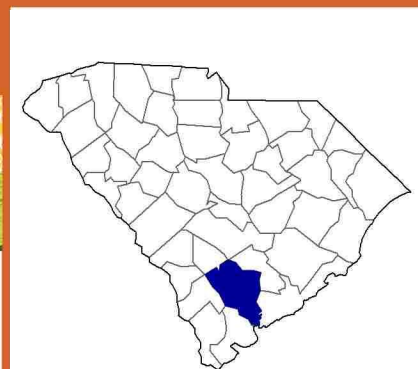
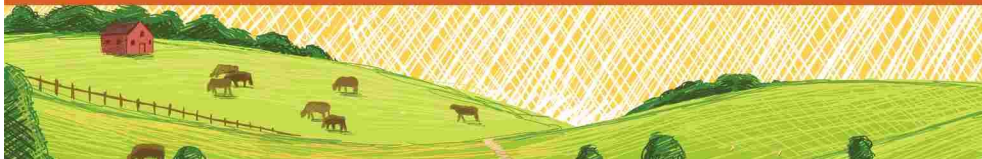
## **Colleton County, South Carolina Farms with Native Hawaiian or Other Pacific Islander Producers<sup>a</sup>**

**Data not available at this geographic level for farms with Native Hawaiian or Other Pacific Islander Producers.**

<sup>a</sup> This race alone or in combination with other races.







## Colleton County, South Carolina Farms with White Producers<sup>a</sup>

### Total and Per Farm Overview, 2017

	Farms with White Producers	All Farms
Number of farms	406	459
Land in farms (acres)	164,466	168,095
Average size of farm (acres)	405	366
<b>Total</b>	<b>(\$)</b>	<b>(\$)</b>
Market value of products sold	20,073,000	20,318,000
Government payments	724,000	724,000
Farm-related income	5,245,000	5,294,000
Total farm production expenses	25,594,000	26,204,000
Net cash farm income	447,000	132,000
<b>Per farm average</b>	<b>(\$)</b>	<b>(\$)</b>
Market value of products sold	49,441	44,266
Government payments (average per farm receiving)	10,191	9,786
Farm-related income	44,076	41,041
Total farm production expenses	63,041	57,090
Net cash farm income	1,102	288

### Share of Sales by Type (%)

Crops	77
Livestock, poultry, and products	23

### Land in Farms by Use (%) <sup>b</sup>

Cropland	24
Pastureland	3
Woodland	55
Other	18

### Land Use Practices (% of farms)

No till	9
Reduced till	9
Intensive till	34
Cover crop	12

### Farms by Value of Sales

	Number	Percent <sup>b</sup>
Less than \$2,500	193	48
\$2,500 to \$4,999	56	14
\$5,000 to \$9,999	32	8
\$10,000 to \$24,999	59	15
\$25,000 to \$49,999	31	8
\$50,000 to \$99,999	9	2
\$100,000 or more	26	6
<b>Total</b>	<b>406</b>	<b>100</b>

### Farms by Size

	Number	Percent <sup>b</sup>
1 to 9 acres	54	13
10 to 49 acres	113	28
50 to 179 acres	104	26
180 to 499 acres	74	18
500 to 999 acres	29	7
1,000 + acres	32	8
<b>Total</b>	<b>406</b>	<b>100</b>



# 2017 CENSUS OF AGRICULTURE Race/Ethnicity/Gender Profile

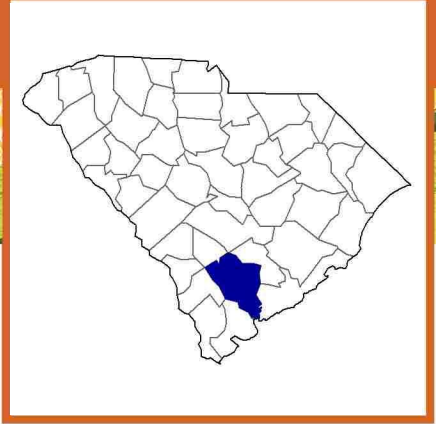
Market Value of Agricultural Products Sold			Total Producers <sup>c</sup>	605
	Sales (\$1,000)	No. of Farms		
<b>Total</b>	<b>20,073</b>	<b>406</b>	<b>Sex</b>	
			Male	422
			Female	183
<b>Crops</b>	<b>15,510</b>	<b>211</b>	<b>Age</b>	
Grains, oilseeds, dry beans, dry peas	3,630	122	<35	31
Tobacco	(D)	1	35 – 64	369
Cotton and cottonseed	2,115	16	65 and older	205
Vegetables, melons, potatoes, sweet potatoes	(D)	27		
Fruits, tree nuts, berries	21	9	<b>Primary occupation</b>	
Nursery, greenhouse, floriculture, sod	(D)	14	Farming	185
Cultivated Christmas trees, short rotation			Other	420
woody crops	32	4		
Other crops and hay	4,012	69	<b>Days worked off farm</b>	
			None	179
<b>Livestock, poultry, and products</b>	<b>4,563</b>	<b>133</b>	1 to 199	115
Poultry and eggs	(D)	38	200 +	311
Cattle and calves	677	62		
Milk from cows	-	-	<b>Other characteristics</b>	
Hogs and pigs	83	11	Hispanic/Latino/Spanish	12
Sheep, goats, wool, mohair, milk	(D)	20	With military service	108
Horses, ponies, mules, burros, donkeys	(D)	30	New and beginning farmers	200
Aquaculture	(D)	2		
Other animals and animal products	92	9	<b>Average age (years)</b>	57.3
<b>Top Crops in Acres <sup>d</sup></b>		<b>Percent of farms that:</b>	<b>Demographic Data in the Census of Agriculture</b>	
Corn for grain	5,402	Have internet access	76	The agriculture census is a complete count of U.S. farms and ranches and the people who operate them. Demographic information is available at national, state, and county levels, and for classes of farm and congressional districts. Results from the 2017 Census and earlier are available through the searchable database Quick Stats, the new Census Data Query Tool, downloadable PDF reports, maps, and topic-specific Highlights and Profiles.
Peanuts for nuts	4,630	Farm organically	-	See also the video "What's New in the 2017 Census?" ( <a href="http://www.nass.usda.gov/Newsroom/VideoFeatures/index.php">www.nass.usda.gov/Newsroom/VideoFeatures/index.php</a> ).
Cotton, all	4,304	Sell directly to consumers	4	
Forage (hay/haylage), all	3,728	Hire farm labor	26	
Soybeans for beans	3,413	Are family farms	97	
<b>Livestock Inventory (Dec 31, 2017)</b>				
Broilers and other meat-type chickens	(D)			
Cattle and calves	2,498			
Goats	635			
Hogs and pigs	348			
Horses and ponies	659			
Layers	1,602			
Pullets	134			
Sheep and lambs	183			
Turkeys	144			

See 2017 Census of Agriculture, U.S. Summary and State Data, for complete footnotes, explanations, definitions, commodity descriptions, and methodology.

<sup>a</sup> This race alone or in combination with other races. <sup>b</sup> May not add to 100% due to rounding. <sup>c</sup> Data collected for a maximum of four producers per farm.

<sup>d</sup> Crop commodity names may be shortened; see full names at [www.nass.usda.gov/go/cropnames.pdf](http://www.nass.usda.gov/go/cropnames.pdf). <sup>e</sup> Position below the line does not indicate rank.

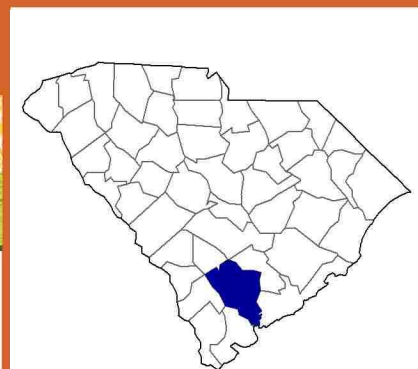
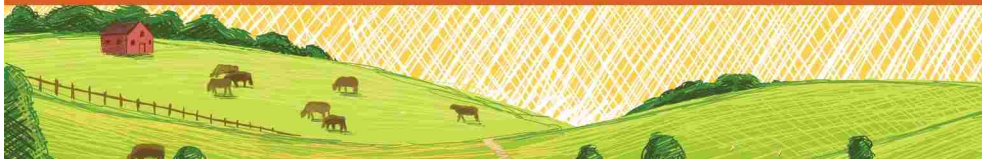
(D) Withheld to avoid disclosing data for individual operations. (NA) Not available. (Z) Less than half of the unit shown. (-) Represents zero.



## **Colleton County, South Carolina Farms with Hispanic, Latino, or Spanish Producers**

Data not available at this geographic level for farms with Hispanic, Latino, or Spanish Producers.





## Colleton County, South Carolina Farms with Female Producers

### Total and Per Farm Overview, 2017

	Farms with Female Producers	All Farms
Number of farms	179	459
Land in farms (acres)	39,032	168,095
Average size of farm (acres)	218	366
<b>Total</b>	<b>(\$)</b>	<b>(\$)</b>
Market value of products sold	7,358,000	20,318,000
Government payments	71,000	724,000
Farm-related income	1,193,000	5,294,000
Total farm production expenses	8,112,000	26,204,000
Net cash farm income	510,000	132,000
<b>Per farm average</b>	<b>(\$)</b>	<b>(\$)</b>
Market value of products sold	41,107	44,266
Government payments (average per farm receiving)	7,102	9,786
Farm-related income	27,735	41,041
Total farm production expenses	45,316	57,090
Net cash farm income	2,850	288

### Share of Sales by Type (%)

Crops	46
Livestock, poultry, and products	54

### Land in Farms by Use (%) <sup>b</sup>

Cropland	12
Pastureland	4
Woodland	48
Other	36

### Land Use Practices (% of farms)

No till	4
Reduced till	4
Intensive till	22
Cover crop	8

### Farms by Value of Sales

	Number	Percent <sup>b</sup>
Less than \$2,500	102	57
\$2,500 to \$4,999	27	15
\$5,000 to \$9,999	11	6
\$10,000 to \$24,999	19	11
\$25,000 to \$49,999	13	7
\$50,000 to \$99,999	2	1
\$100,000 or more	5	3
<b>Total</b>	<b>179</b>	<b>100</b>

### Farms by Size

	Number	Percent <sup>b</sup>
1 to 9 acres	38	21
10 to 49 acres	64	36
50 to 179 acres	36	20
180 to 499 acres	21	12
500 to 999 acres	10	6
1,000 + acres	10	6
<b>Total</b>	<b>179</b>	<b>100</b>



# 2017 CENSUS OF AGRICULTURE Race/Ethnicity/Gender Profile

Market Value of Agricultural Products Sold			Total Producers <sup>c</sup>	189
	Sales (\$1,000)	No. of Farms		
<b>Total</b>	<b>7,358</b>	<b>179</b>	<b>Age</b>	
			<35	11
			35 – 64	100
			65 and older	78
<b>Crops</b>	<b>3,405</b>	<b>68</b>	<b>Race</b>	
Grains, oilseeds, dry beans, dry peas	147	17	American Indian/Alaska Native	2
Tobacco	-	-	Asian	-
Cotton and cottonseed	-	-	Black/African American	4
Vegetables, melons, potatoes, sweet potatoes	(D)	18	Native Hawaiian/Pacific Islander	-
Fruits, tree nuts, berries	22	7	White	177
Nursery, greenhouse, floriculture, sod	(D)	11	More than one race	6
Cultivated Christmas trees, short rotation woody crops	32	4	<b>Primary occupation</b>	
Other crops and hay	66	20	Farming	58
			Other	131
<b>Livestock, poultry, and products</b>	<b>3,953</b>	<b>79</b>	<b>Days worked off farm</b>	
Poultry and eggs	(D)	27	None	77
Cattle and calves	213	23	1 to 199	27
Milk from cows	-	-	200 +	85
Hogs and pigs	(D)	7	<b>Other characteristics</b>	
Sheep, goats, wool, mohair, milk	21	17	Hispanic/Latino/Spanish	6
Horses, ponies, mules, burros, donkeys	172	21	With military service	8
Aquaculture	(D)	2	New and beginning farmers	68
Other animals and animal products	6	5	<b>Average age (years)</b>	<b>59.0</b>
<b>Top Crops in Acres <sup>d</sup></b>	<b>Percent of farms that:</b>			<b>Demographic Data in the Census of Agriculture</b>
Vegetables harvested, all	579	Have internet access	<b>84</b>	<p>The agriculture census is a complete count of U.S. farms and ranches and the people who operate them. Demographic information is available at national, state, and county levels, and for classes of farm and congressional districts. Results from the 2017 Census and earlier are available through the searchable database Quick Stats, the new Census Data Query Tool, downloadable PDF reports, maps, and topic-specific Highlights and Profiles.</p> <p>See also the video “What’s New in the 2017 Census?” (<a href="http://www.nass.usda.gov/Newsroom/VideoFeatures/index.php">www.nass.usda.gov/Newsroom/VideoFeatures/index.php</a>).</p>
Forage (hay/haylage), all	385	Farm organically	<b>-</b>	
Soybeans for beans	326	Sell directly to consumers	<b>6</b>	
Watermelons	(D)	Hire farm labor	<b>22</b>	
Corn for grain	132	Are family farms	<b>100</b>	
<b>Livestock Inventory (Dec 31, 2017)</b>				
Broilers and other meat-type chickens	(D)			
Cattle and calves	611			
Goats	577			
Hogs and pigs	233			
Horses and ponies	528			
Layers	953			
Pullets	122			
Sheep and lambs	122			
Turkeys	144			

See 2017 Census of Agriculture, U.S. Summary and State Data, for complete footnotes, explanations, definitions, commodity descriptions, and methodology.

<sup>a</sup> This race alone or in combination with other races. <sup>b</sup> May not add to 100% due to rounding. <sup>c</sup> Data collected for a maximum of four producers per farm.

<sup>d</sup> Crop commodity names may be shortened; see full names at [www.nass.usda.gov/go/cropnames.pdf](http://www.nass.usda.gov/go/cropnames.pdf). <sup>e</sup> Position below the line does not indicate rank.

(D) Withheld to avoid disclosing data for individual operations. (NA) Not available. (Z) Less than half of the unit shown. (-) Represents zero.