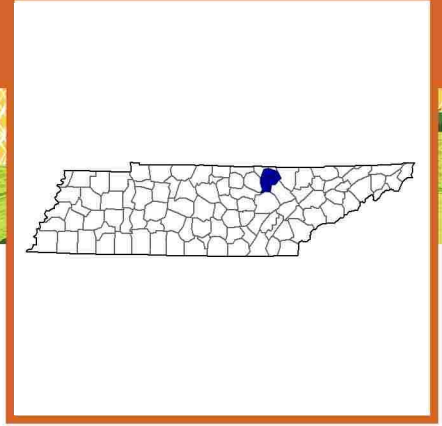


Fentress County, Tennessee Farms with American Indian or Alaska Native Producers^a

Data not available at this geographic level for farms with American Indian or Alaska Native Producers.

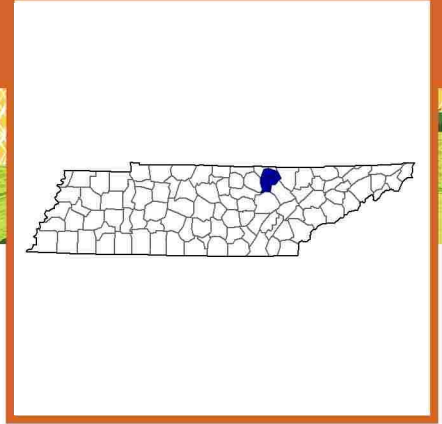
^a This race alone or in combination with other races.



Fentress County, Tennessee Farms with Asian Producers^a

Data not available at this geographic level for farms with Asian Producers.

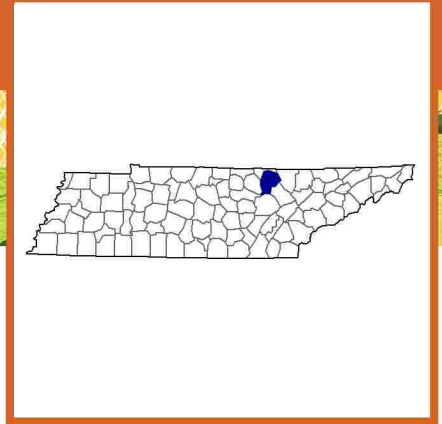
^a This race alone or in combination with other races.



Fentress County, Tennessee Farms with Black or African American Producers^a

Data not available at this geographic level for farms with Black or African American Producers.

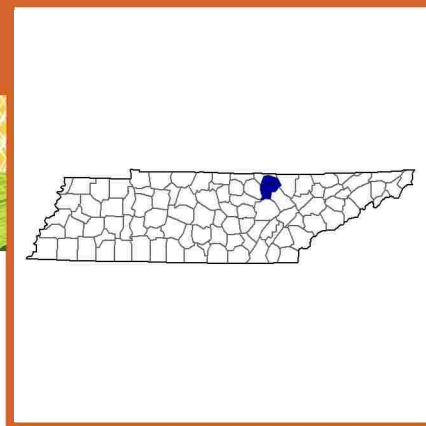
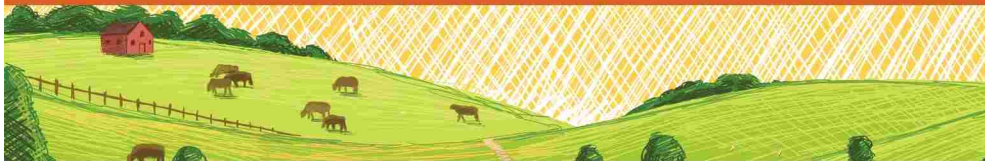
^a This race alone or in combination with other races.



Fentress County, Tennessee Farms with Native Hawaiian or Other Pacific Islander Producers^a

Data not available at this geographic level for farms with Native Hawaiian or Other Pacific Islander Producers.

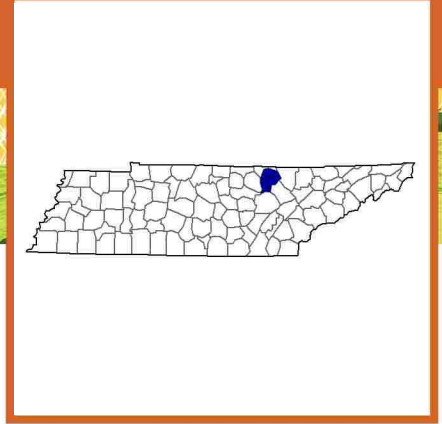
^a This race alone or in combination with other races.



Fentress County, Tennessee Farms with White Producers^a

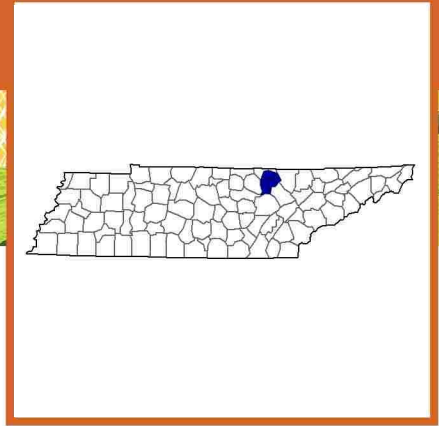
Data not available at this geographic level for farms with White Producers.

^a This race alone or in combination with other races.



Fentress County, Tennessee Farms with Hispanic, Latino, or Spanish Producers

Data not available at this geographic level for farms with Hispanic, Latino, or Spanish Producers.



Fentress County, Tennessee Farms with Female Producers

Total and Per Farm Overview, 2017

	Farms with Female Producers	All Farms
Number of farms	352	620
Land in farms (acres)	42,976	93,987
Average size of farm (acres)	122	152
Total	(\$)	(\$)
Market value of products sold	18,770,000	37,562,000
Government payments	236,000	549,000
Farm-related income	442,000	1,332,000
Total farm production expenses	16,848,000	34,647,000
Net cash farm income	2,600,000	4,796,000
Per farm average	(\$)	(\$)
Market value of products sold	53,324	60,584
Government payments (average per farm receiving)	2,270	2,654
Farm-related income	4,910	6,936
Total farm production expenses	47,863	55,883
Net cash farm income	7,387	7,735

Share of Sales by Type (%)

Crops	14
Livestock, poultry, and products	86

Land in Farms by Use (%) ^b

Cropland	28
Pastureland	34
Woodland	33
Other	5

Land Use Practices (% of farms)

No till	5
Reduced till	4
Intensive till	6
Cover crop	7

Farms by Value of Sales

	Number	Percent ^b
Less than \$2,500	155	44
\$2,500 to \$4,999	50	14
\$5,000 to \$9,999	44	13
\$10,000 to \$24,999	54	15
\$25,000 to \$49,999	14	4
\$50,000 to \$99,999	19	5
\$100,000 or more	16	5
Total	352	100

Farms by Size

	Number	Percent ^b
1 to 9 acres	33	9
10 to 49 acres	136	39
50 to 179 acres	132	38
180 to 499 acres	37	11
500 to 999 acres	10	3
1,000 + acres	4	1
Total	352	100

2017 CENSUS OF AGRICULTURE Race/Ethnicity/Gender Profile

Market Value of Agricultural Products Sold			Total Producers ^c	370
	Sales (\$1,000)	No. of Farms		
Total	18,770	352	Age	
			<35	34
			35 – 64	246
			65 and older	90
Crops	2,606	144	Race	
Grains, oilseeds, dry beans, dry peas	742	21	American Indian/Alaska Native	-
Tobacco	-	-	Asian	-
Cotton and cottonseed	-	-	Black/African American	-
Vegetables, melons, potatoes, sweet potatoes	114	7	Native Hawaiian/Pacific Islander	-
Fruits, tree nuts, berries	57	6	White	369
Nursery, greenhouse, floriculture, sod	(D)	7	More than one race	1
Cultivated Christmas trees, short rotation woody crops	(D)	1	Primary occupation	
Other crops and hay	485	121	Farming	105
			Other	265
Livestock, poultry, and products	16,164	194	Days worked off farm	
Poultry and eggs	8,186	23	None	146
Cattle and calves	6,379	149	1 to 199	90
Milk from cows	1,455	8	200 +	134
Hogs and pigs	13	14	Other characteristics	
Sheep, goats, wool, mohair, milk	55	21	Hispanic/Latino/Spanish	4
Horses, ponies, mules, burros, donkeys	66	25	With military service	12
Aquaculture	-	-	New and beginning farmers	110
Other animals and animal products	11	12	<i>Average age (years)</i>	55.6
Top Crops in Acres ^d		Percent of farms that:		
Forage (hay/haylage), all	7,833	Have internet access	79	Demographic Data in the Census of Agriculture
Soybeans for beans	605	Farm organically	-	The agriculture census is a complete count of U.S. farms and ranches and the people who operate them. Demographic information is available at national, state, and county levels, and for classes of farm and congressional districts. Results from the 2017 Census and earlier are available through the searchable database Quick Stats, the new Census Data Query Tool, downloadable PDF reports, maps, and topic-specific Highlights and Profiles.
Corn for silage	456	Sell directly to consumers	7	See also the video "What's New in the 2017 Census?" (www.nass.usda.gov/Newsroom/VideoFeatures/index.php).
Corn for grain	286	Hire farm labor	22	
Wheat for grain, all	150	Are family farms	99	
Livestock Inventory (Dec 31, 2017)				
Broilers and other meat-type chickens	485,058			
Cattle and calves	10,354			
Goats	260			
Hogs and pigs	122			
Horses and ponies	503			
Layers	9,736			
Pullets	(D)			
Sheep and lambs	209			
Turkeys	15			

See 2017 Census of Agriculture, U.S. Summary and State Data, for complete footnotes, explanations, definitions, commodity descriptions, and methodology.

^a This race alone or in combination with other races. ^b May not add to 100% due to rounding. ^c Data collected for a maximum of four producers per farm.

^d Crop commodity names may be shortened; see full names at www.nass.usda.gov/go/cropnames.pdf. ^e Position below the line does not indicate rank.

(D) Withheld to avoid disclosing data for individual operations. (NA) Not available. (Z) Less than half of the unit shown. (-) Represents zero.