



Andrews County, Texas Farms with American Indian or Alaska Native Producers^a

Data not available at this geographic level for farms with American Indian or Alaska Native Producers.

^a This race alone or in combination with other races.



Andrews County, Texas Farms with Asian Producers^a

Data not available at this geographic level for farms with Asian Producers.

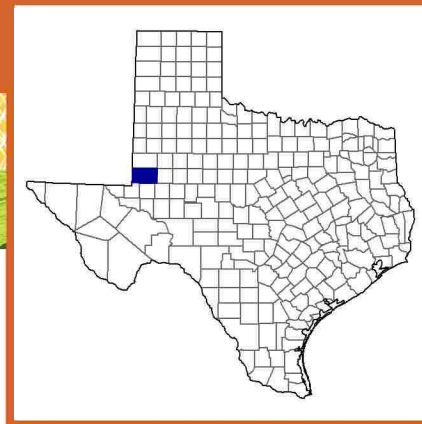
^a This race alone or in combination with other races.



Andrews County, Texas Farms with Black or African American Producers^a

Data not available at this geographic level for farms with Black or African American Producers.

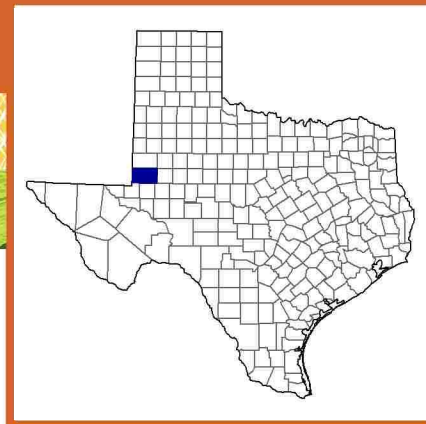
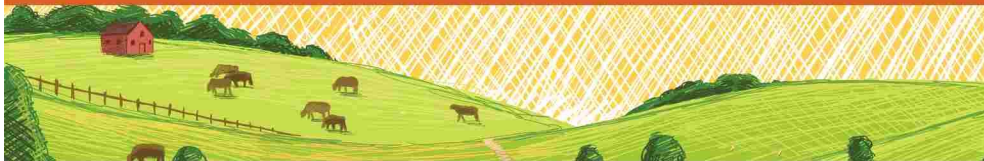
^a This race alone or in combination with other races.



Andrews County, Texas Farms with Native Hawaiian or Other Pacific Islander Producers^a

Data not available at this geographic level for farms with Native Hawaiian or Other Pacific Islander Producers.

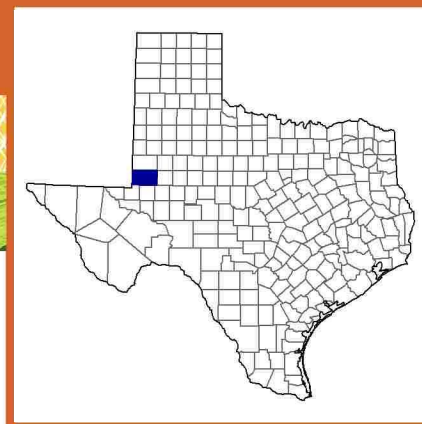
^a This race alone or in combination with other races.



Andrews County, Texas Farms with White Producers^a

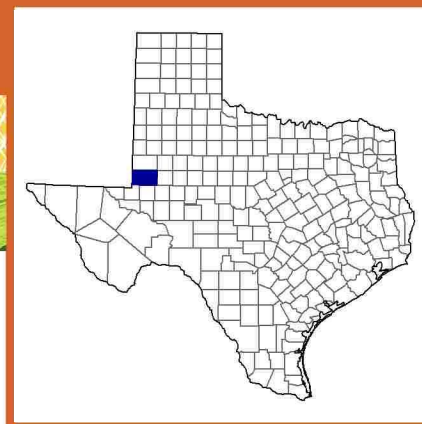
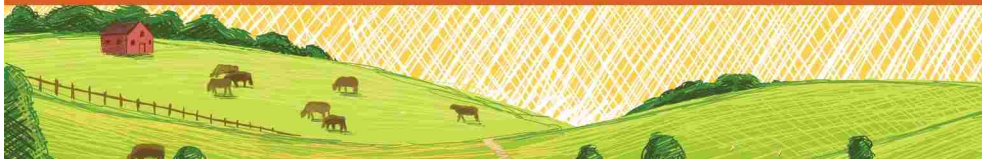
Data not available at this geographic level for farms with White Producers.

^a This race alone or in combination with other races.



Andrews County, Texas Farms with Hispanic, Latino, or Spanish Producers

Data not available at this geographic level for farms with Hispanic, Latino, or Spanish Producers.



Andrews County, Texas

Farms with Female Producers

Total and Per Farm Overview, 2017

	Farms with Female Producers	All Farms
Number of farms	89	156
Land in farms (acres)	601,602	886,765
Average size of farm (acres)	6,760	5,684
Total	(\$)	(\$)
Market value of products sold	6,515,000	10,615,000
Government payments	1,567,000	2,325,000
Farm-related income	2,144,000	2,579,000
Total farm production expenses	7,601,000	12,385,000
Net cash farm income	2,625,000	3,134,000
Per farm average	(\$)	(\$)
Market value of products sold	73,197	68,047
Government payments (average per farm receiving)	50,549	43,865
Farm-related income	67,003	49,590
Total farm production expenses	85,402	79,389
Net cash farm income	29,493	20,091

Share of Sales by Type (%)

Crops	48
Livestock, poultry, and products	52

Land in Farms by Use (%) ^b

Cropland	8
Pastureland	92
Woodland	(Z)
Other	(Z)

Land Use Practices (% of farms)

No till	7
Reduced till	2
Intensive till	9
Cover crop	-

Farms by Value of Sales

	Number	Percent ^b
Less than \$2,500	53	60
\$2,500 to \$4,999	5	6
\$5,000 to \$9,999	2	2
\$10,000 to \$24,999	9	10
\$25,000 to \$49,999	3	3
\$50,000 to \$99,999	8	9
\$100,000 or more	9	10
Total	89	100

Farms by Size

	Number	Percent ^b
1 to 9 acres	21	24
10 to 49 acres	18	20
50 to 179 acres	5	6
180 to 499 acres	5	6
500 to 999 acres	14	16
1,000 + acres	26	29
Total	89	100



2017 CENSUS OF AGRICULTURE Race/Ethnicity/Gender Profile

Market Value of Agricultural Products Sold			Total Producers ^c	92
	Sales (\$1,000)	No. of Farms		
Total	6,515	89	Age	
			<35	2
			35 – 64	69
			65 and older	21
Crops	3,098	12	Race	
Grains, oilseeds, dry beans, dry peas	(D)	2	American Indian/Alaska Native	-
Tobacco	-	-	Asian	-
Cotton and cottonseed	2,185	3	Black/African American	-
Vegetables, melons, potatoes, sweet potatoes	(D)	2	Native Hawaiian/Pacific Islander	-
Fruits, tree nuts, berries	(D)	2	White	92
Nursery, greenhouse, floriculture, sod	-	-	More than one race	-
Cultivated Christmas trees, short rotation woody crops	-	-		
Other crops and hay	860	7	Primary occupation	
			Farming	42
			Other	50
Livestock, poultry, and products	3,417	60	Days worked off farm	
Poultry and eggs	(D)	13	None	45
Cattle and calves	3,340	34	1 to 199	8
Milk from cows	-	-	200 +	39
Hogs and pigs	(D)	6		
Sheep, goats, wool, mohair, milk	42	4	Other characteristics	
Horses, ponies, mules, burros, donkeys	23	9	Hispanic/Latino/Spanish	2
Aquaculture	-	-	With military service	2
Other animals and animal products	-	-	New and beginning farmers	41
			Average age (years)	56.5
Top Crops in Acres ^d		Percent of farms that:		
Cotton, all	6,140	Have internet access	82	
Peanuts for nuts	(D)			
Wheat for grain, all	(D)	Farm organically	-	
Forage (hay/haylage), all	412			
Pecans, all	(D)	Sell directly to consumers	6	
Livestock Inventory (Dec 31, 2017)				
Broilers and other meat-type chickens	-	Hire farm labor	17	
Cattle and calves	6,198			
Goats	113	Are family farms	92	
Hogs and pigs	180			
Horses and ponies	240			
Layers	583			
Pullets	(D)			
Sheep and lambs	298			
Turkeys	-			

Demographic Data in the Census of Agriculture

The agriculture census is a complete count of U.S. farms and ranches and the people who operate them. Demographic information is available at national, state, and county levels, and for classes of farm and congressional districts. Results from the 2017 Census and earlier are available through the searchable database Quick Stats, the new Census Data Query Tool, downloadable PDF reports, maps, and topic-specific Highlights and Profiles.

See also the video "What's New in the 2017 Census?" (www.nass.usda.gov/Newsroom/VideoFeatures/index.php).

See 2017 Census of Agriculture, U.S. Summary and State Data, for complete footnotes, explanations, definitions, commodity descriptions, and methodology.

^a This race alone or in combination with other races. ^b May not add to 100% due to rounding. ^c Data collected for a maximum of four producers per farm.

^d Crop commodity names may be shortened; see full names at www.nass.usda.gov/go/cropnames.pdf. ^e Position below the line does not indicate rank.

(D) Withheld to avoid disclosing data for individual operations. (NA) Not available. (Z) Less than half of the unit shown. (-) Represents zero.