

Hamilton County, Texas

Farms with American Indian or Alaska Native Producers^a

Total and Per Farm Overview, 2017

	Farms with American Indian/Alaska Native Producers	All Farms
Number of farms	32	1,163
Land in farms (acres)	(D)	483,812
Average size of farm (acres)	(D)	416
Total	(\$)	(\$)
Market value of products sold	(D)	62,025,000
Government payments	13,000	1,045,000
Farm-related income	462,000	2,190,000
Total farm production expenses	(D)	64,151,000
Net cash farm income	(D)	1,109,000
Per farm average	(\$)	(\$)
Market value of products sold	(D)	53,332
Government payments (average per farm receiving)	4,370	5,123
Farm-related income	23,098	6,929
Total farm production expenses	(D)	55,160
Net cash farm income	(D)	954

Share of Sales by Type (%)

Crops	(D)
Livestock, poultry, and products	(D)

Land in Farms by Use (%) ^b

Cropland	12
Pastureland	(D)
Woodland	(D)
Other	(D)

Land Use Practices (% of farms)

No till	-
Reduced till	-
Intensive till	-
Cover crop	-

Farms by Value of Sales

	Number	Percent ^b
Less than \$2,500	17	53
\$2,500 to \$4,999	9	28
\$5,000 to \$9,999	2	6
\$10,000 to \$24,999	1	3
\$25,000 to \$49,999	2	6
\$50,000 to \$99,999	-	-
\$100,000 or more	1	3
Total	32	100

Farms by Size

	Number	Percent ^b
1 to 9 acres	3	9
10 to 49 acres	-	-
50 to 179 acres	14	44
180 to 499 acres	3	9
500 to 999 acres	11	34
1,000 + acres	1	3
Total	32	100



2017 CENSUS OF AGRICULTURE Race/Ethnicity/Gender Profile

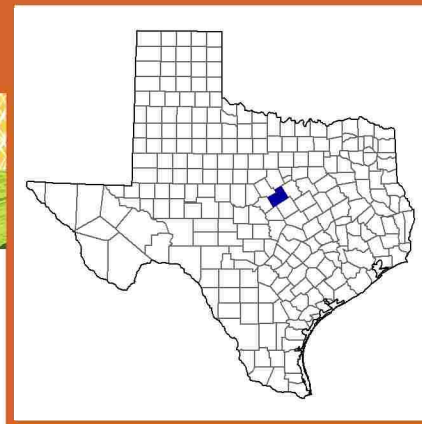
Market Value of Agricultural Products Sold			Total Producers ^c	38
	Sales (\$1,000)	No. of Farms		
Total	(D)	32	Sex	
			Male	22
			Female	16
Crops	(D)	9	Age	
Grains, oilseeds, dry beans, dry peas	-	-	<35	-
Tobacco	-	-	35 – 64	26
Cotton and cottonseed	-	-	65 and older	12
Vegetables, melons, potatoes, sweet potatoes	-	-		
Fruits, tree nuts, berries	-	-	Primary occupation	
Nursery, greenhouse, floriculture, sod	-	-	Farming	24
Cultivated Christmas trees, short rotation woody crops	-	-	Other	14
Other crops and hay	(D)	9		
Livestock, poultry, and products	(D)	22	Days worked off farm	
Poultry and eggs	(D)	4	None	12
Cattle and calves	(D)	10	1 to 199	17
Milk from cows	-	-	200 +	9
Hogs and pigs	-	-		
Sheep, goats, wool, mohair, milk	17	8	Other characteristics	
Horses, ponies, mules, burros, donkeys	-	-	Hispanic/Latino/Spanish	5
Aquaculture	-	-	With military service	4
Other animals and animal products	-	-	New and beginning farmers	9
			Average age (years)	(D)
Top Crops in Acres ^d		Percent of farms that:	Demographic Data in the Census of Agriculture	
Forage (hay/haylage), all	815	Have internet access	69	<p>The agriculture census is a complete count of U.S. farms and ranches and the people who operate them. Demographic information is available at national, state, and county levels, and for classes of farm and congressional districts. Results from the 2017 Census and earlier are available through the searchable database Quick Stats, the new Census Data Query Tool, downloadable PDF reports, maps, and topic-specific Highlights and Profiles.</p> <p>See also the video “What’s New in the 2017 Census?” (www.nass.usda.gov/Newsroom/VideoFeatures/index.php).</p>
		Farm organically	-	
		Sell directly to consumers	13	
		Hire farm labor	31	
		Are family farms	94	
Livestock Inventory (Dec 31, 2017)				
Broilers and other meat-type chickens	-			
Cattle and calves	(D)			
Goats	109			
Hogs and pigs	-			
Horses and ponies	94			
Layers	289			
Pullets	36			
Sheep and lambs	308			
Turkeys	-			

See 2017 Census of Agriculture, U.S. Summary and State Data, for complete footnotes, explanations, definitions, commodity descriptions, and methodology.

^a This race alone or in combination with other races. ^b May not add to 100% due to rounding. ^c Data collected for a maximum of four producers per farm.

^d Crop commodity names may be shortened; see full names at www.nass.usda.gov/go/cropnames.pdf. ^e Position below the line does not indicate rank.

(D) Withheld to avoid disclosing data for individual operations. (NA) Not available. (Z) Less than half of the unit shown. (-) Represents zero.



Hamilton County, Texas Farms with Asian Producers^a

Data not available at this geographic level for farms with Asian Producers.

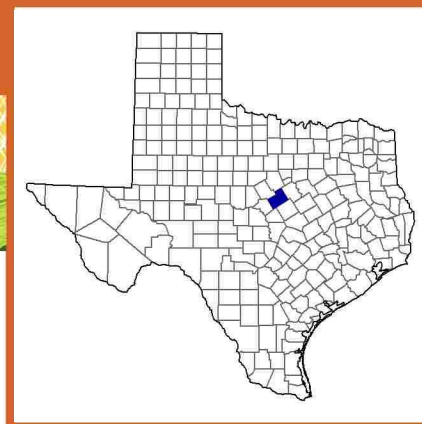
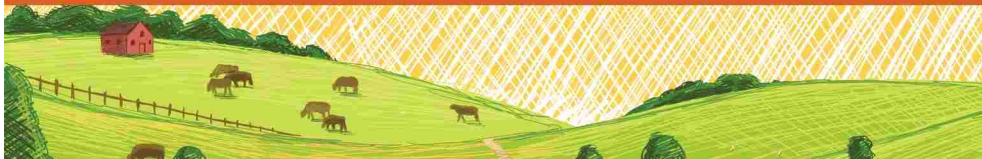
^a This race alone or in combination with other races.



Hamilton County, Texas Farms with Black or African American Producers^a

Data not available at this geographic level for farms with Black or African American Producers.

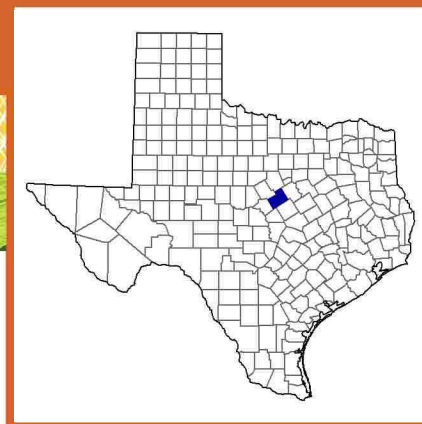
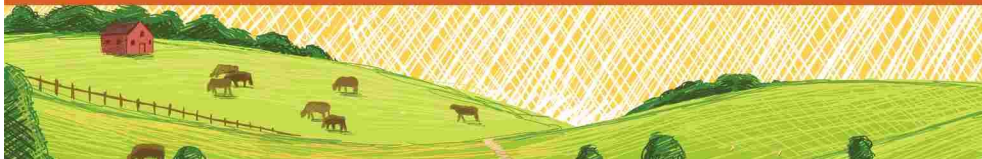
^a This race alone or in combination with other races.



Hamilton County, Texas Farms with Native Hawaiian or Other Pacific Islander Producers^a

Data not available at this geographic level for farms with Native Hawaiian or Other Pacific Islander Producers.

^a This race alone or in combination with other races.



Hamilton County, Texas

Farms with White Producers^a

Total and Per Farm Overview, 2017

	Farms with White Producers	All Farms
Number of farms	1,146	1,163
Land in farms (acres)	475,478	483,812
Average size of farm (acres)	415	416
Total	(\$)	(\$)
Market value of products sold	(D)	62,025,000
Government payments	1,042,000	1,045,000
Farm-related income	1,840,000	2,190,000
Total farm production expenses	63,143,000	64,151,000
Net cash farm income	1,648,000	1,109,000
Per farm average	(\$)	(\$)
Market value of products sold	(D)	53,332
Government payments (average per farm receiving)	5,158	5,123
Farm-related income	6,071	6,929
Total farm production expenses	55,099	55,160
Net cash farm income	1,438	954

Share of Sales by Type (%)

Crops	(D)
Livestock, poultry, and products	(D)

Land in Farms by Use (%) ^b

Cropland	18
Pastureland	73
Woodland	6
Other	3

Land Use Practices (% of farms)

No till	3
Reduced till	2
Intensive till	13
Cover crop	5

Farms by Value of Sales

	Number	Percent ^b
Less than \$2,500	412	36
\$2,500 to \$4,999	169	15
\$5,000 to \$9,999	178	16
\$10,000 to \$24,999	175	15
\$25,000 to \$49,999	102	9
\$50,000 to \$99,999	44	4
\$100,000 or more	66	6
Total	1,146	100

Farms by Size

	Number	Percent ^b
1 to 9 acres	59	5
10 to 49 acres	167	15
50 to 179 acres	372	32
180 to 499 acres	326	28
500 to 999 acres	109	10
1,000 + acres	113	10
Total	1,146	100



2017 CENSUS OF AGRICULTURE Race/Ethnicity/Gender Profile

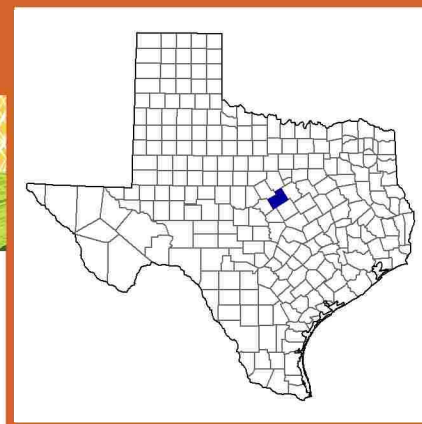
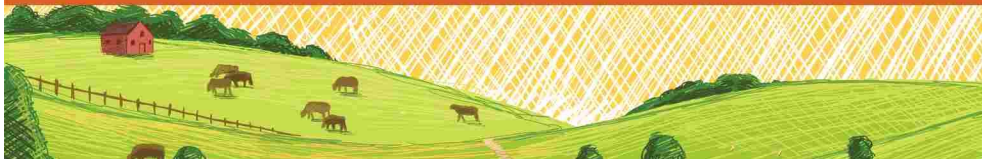
Market Value of Agricultural Products Sold			Total Producers ^c	1,936
	Sales (\$1,000)	No. of Farms		
Total	(D)	1,146	Sex	
			Male	1,175
			Female	761
Crops	(D)	219	Age	
Grains, oilseeds, dry beans, dry peas	1,232	49	<35	110
Tobacco	-	-	35 – 64	987
Cotton and cottonseed	(D)	3	65 and older	839
Vegetables, melons, potatoes, sweet potatoes	398	6		
Fruits, tree nuts, berries	2,840	55	Primary occupation	
Nursery, greenhouse, floriculture, sod	(D)	2	Farming	746
Cultivated Christmas trees, short rotation	-	-	Other	1,190
woody crops	-	-		
Other crops and hay	(D)	142	Days worked off farm	
			None	682
Livestock, poultry, and products	(D)	828	1 to 199	469
Poultry and eggs	23	56	200 +	785
Cattle and calves	(D)	714		
Milk from cows	29,671	8	Other characteristics	
Hogs and pigs	55	25	Hispanic/Latino/Spanish	63
Sheep, goats, wool, mohair, milk	1,717	153	With military service	241
Horses, ponies, mules, burros, donkeys	200	25	New and beginning farmers	585
Aquaculture	-	-		
Other animals and animal products	(D)	12	Average age (years)	60.9
Top Crops in Acres ^d			Demographic Data in the Census of Agriculture	
Forage (hay/haylage), all	29,979		<p>The agriculture census is a complete count of U.S. farms and ranches and the people who operate them. Demographic information is available at national, state, and county levels, and for classes of farm and congressional districts. Results from the 2017 Census and earlier are available through the searchable database Quick Stats, the new Census Data Query Tool, downloadable PDF reports, maps, and topic-specific Highlights and Profiles.</p> <p>See also the video "What's New in the 2017 Census?" (www.nass.usda.gov/Newsroom/VideoFeatures/index.php).</p>	
Pecans, all	3,350			
Oats for grain	3,214			
Wheat for grain, all	2,946			
Sorghum for grain	1,335			
Livestock Inventory (Dec 31, 2017)			<p>Have internet access 75</p> <p>Farm organically (Z)</p> <p>Sell directly to consumers 2</p> <p>Hire farm labor 19</p> <p>Are family farms 97</p>	
Broilers and other meat-type chickens	60			
Cattle and calves	65,898			
Goats	7,469			
Hogs and pigs	471			
Horses and ponies	1,106		<p>Percent of farms that:</p>	
Layers	2,778			
Pullets	208			
Sheep and lambs	15,372			
Turkeys	36			

See 2017 Census of Agriculture, U.S. Summary and State Data, for complete footnotes, explanations, definitions, commodity descriptions, and methodology.

^a This race alone or in combination with other races. ^b May not add to 100% due to rounding. ^c Data collected for a maximum of four producers per farm.

^d Crop commodity names may be shortened; see full names at www.nass.usda.gov/go/cropnames.pdf. ^e Position below the line does not indicate rank.

(D) Withheld to avoid disclosing data for individual operations. (NA) Not available. (Z) Less than half of the unit shown. (-) Represents zero.



Hamilton County, Texas

Farms with Hispanic, Latino, or Spanish Producers

Total and Per Farm Overview, 2017

	Farms with Hispanic/Latino/Spanish Producers	All Farms
Number of farms	56	1,163
Land in farms (acres)	11,825	483,812
Average size of farm (acres)	211	416
Total	(\$)	(\$)
Market value of products sold	385,000	62,025,000
Government payments	(D)	1,045,000
Farm-related income	242,000	2,190,000
Total farm production expenses	896,000	64,151,000
Net cash farm income	-268,000	1,109,000
Per farm average	(\$)	(\$)
Market value of products sold	6,869	53,332
Government payments (average per farm receiving)	(D)	5,123
Farm-related income	26,889	6,929
Total farm production expenses	16,001	55,160
Net cash farm income	-4,782	954

Share of Sales by Type (%)

Crops	27
Livestock, poultry, and products	73

Land in Farms by Use (%) ^b

Cropland	14
Pastureland	38
Woodland	47
Other	1

Land Use Practices (% of farms)

No till	4
Reduced till	2
Intensive till	2
Cover crop	11

Farms by Value of Sales

	Number	Percent ^b
Less than \$2,500	28	50
\$2,500 to \$4,999	9	16
\$5,000 to \$9,999	7	13
\$10,000 to \$24,999	6	11
\$25,000 to \$49,999	6	11
\$50,000 to \$99,999	-	-
\$100,000 or more	-	-
Total	56	100

Farms by Size

	Number	Percent ^b
1 to 9 acres	11	20
10 to 49 acres	16	29
50 to 179 acres	15	27
180 to 499 acres	3	5
500 to 999 acres	11	20
1,000 + acres	-	-
Total	56	100

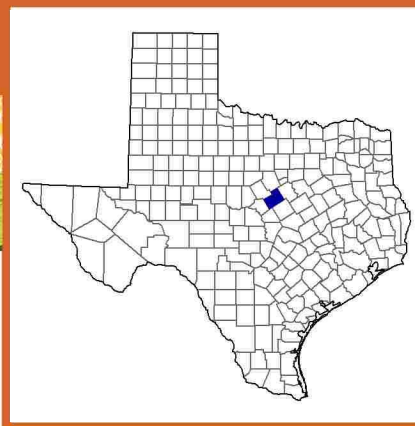
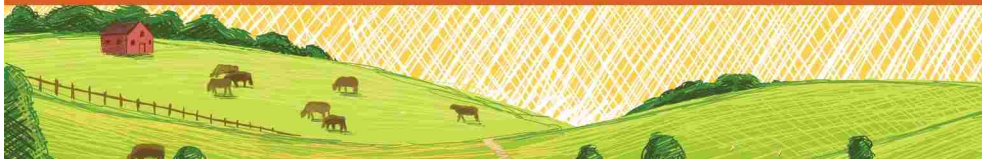
2017 CENSUS OF AGRICULTURE Race/Ethnicity/Gender Profile

Market Value of Agricultural Products Sold			Total Producers ^c	68
	Sales (\$1,000)	No. of Farms		
Total	385	56	Sex	
			Male	33
			Female	35
Crops	106	10	Age	
Grains, oilseeds, dry beans, dry peas	(D)	1	<35	-
Tobacco	-	-	35 – 64	48
Cotton and cottonseed	-	-	65 and older	20
Vegetables, melons, potatoes, sweet potatoes	-	-	Race	
Fruits, tree nuts, berries	(D)	2	American Indian/Alaska Native	5
Nursery, greenhouse, floriculture, sod	-	-	Asian	-
Cultivated Christmas trees, short rotation	-	-	Black/African American	-
woody crops	-	-	Native Hawaiian/Pacific Islander	-
Other crops and hay	96	7	White	63
			More than one race	-
Livestock, poultry, and products	279	37	Primary occupation	
Poultry and eggs	(D)	6	Farming	13
Cattle and calves	261	22	Other	55
Milk from cows	-	-	Days worked off farm	
Hogs and pigs	-	-	None	12
Sheep, goats, wool, mohair, milk	15	13	1 to 199	27
Horses, ponies, mules, burros, donkeys	(D)	2	200 +	29
Aquaculture	-	-	Other characteristics	
Other animals and animal products	(D)	2	With military service	4
			New and beginning farmers	40
			<i>Average age (years)</i>	56.3
Top Crops in Acres ^d		Percent of farms that:	Demographic Data in the Census of Agriculture	
Forage (hay/haylage), all	768	Have internet access	<p>The agriculture census is a complete count of U.S. farms and ranches and the people who operate them. Demographic information is available at national, state, and county levels, and for classes of farm and congressional districts. Results from the 2017 Census and earlier are available through the searchable database Quick Stats, the new Census Data Query Tool, downloadable PDF reports, maps, and topic-specific Highlights and Profiles.</p> <p>See also the video “What’s New in the 2017 Census?” (www.nass.usda.gov/Newsroom/VideoFeatures/index.php).</p>	
Oats for grain	(D)			
Peaches, all	(D)			
Livestock Inventory (Dec 31, 2017)				
Broilers and other meat-type chickens	-			
Cattle and calves	873			
Goats	99			
Hogs and pigs	-			
Horses and ponies	5			
Layers	313			
Pullets	-			
Sheep and lambs	543			
Turkeys	-			

See 2017 Census of Agriculture, U.S. Summary and State Data, for complete footnotes, explanations, definitions, commodity descriptions, and methodology.

^a This race alone or in combination with other races. ^b May not add to 100% due to rounding. ^c Data collected for a maximum of four producers per farm.

^d Crop commodity names may be shortened; see full names at www.nass.usda.gov/go/croptnames.pdf. ^e Position below the line does not indicate rank. (D) Withheld to avoid disclosing data for individual operations. (NA) Not available. (Z) Less than half of the unit shown. (-) Represents zero.



Hamilton County, Texas

Farms with Female Producers

Total and Per Farm Overview, 2017

	Farms with Female Producers	All Farms
Number of farms	739	1,163
Land in farms (acres)	223,368	483,812
Average size of farm (acres)	302	416
Total	(\$)	(\$)
Market value of products sold	30,525,000	62,025,000
Government payments	593,000	1,045,000
Farm-related income	1,185,000	2,190,000
Total farm production expenses	39,653,000	64,151,000
Net cash farm income	-7,349,000	1,109,000
Per farm average	(\$)	(\$)
Market value of products sold	41,306	53,332
Government payments (average per farm receiving)	6,056	5,123
Farm-related income	5,781	6,929
Total farm production expenses	53,657	55,160
Net cash farm income	-9,945	954

Share of Sales by Type (%)

Crops	6
Livestock, poultry, and products	94

Land in Farms by Use (%) ^b

Cropland	20
Pastureland	65
Woodland	12
Other	3

Land Use Practices (% of farms)

No till	2
Reduced till	1
Intensive till	10
Cover crop	4

Farms by Value of Sales

	Number	Percent ^b
Less than \$2,500	282	38
\$2,500 to \$4,999	126	17
\$5,000 to \$9,999	112	15
\$10,000 to \$24,999	115	16
\$25,000 to \$49,999	53	7
\$50,000 to \$99,999	22	3
\$100,000 or more	29	4
Total	739	100

Farms by Size

	Number	Percent ^b
1 to 9 acres	50	7
10 to 49 acres	131	18
50 to 179 acres	232	31
180 to 499 acres	201	27
500 to 999 acres	73	10
1,000 + acres	52	7
Total	739	100



2017 CENSUS OF AGRICULTURE Race/Ethnicity/Gender Profile

Market Value of Agricultural Products Sold			Total Producers ^c	775
	Sales (\$1,000)	No. of Farms		
Total	30,525	739	Age	
			<35	49
			35 – 64	414
			65 and older	312
Crops	1,975	130	Race	
Grains, oilseeds, dry beans, dry peas	162	15	American Indian/Alaska Native	14
Tobacco	-	-	Asian	-
Cotton and cottonseed	-	-	Black/African American	-
Vegetables, melons, potatoes, sweet potatoes	(D)	3	Native Hawaiian/Pacific Islander	-
Fruits, tree nuts, berries	1,021	44	White	759
Nursery, greenhouse, floriculture, sod	(D)	2	More than one race	2
Cultivated Christmas trees, short rotation woody crops	-	-	Primary occupation	
Other crops and hay	744	82	Farming	268
			Other	507
Livestock, poultry, and products	28,550	532	Days worked off farm	
Poultry and eggs	(D)	50	None	289
Cattle and calves	9,627	441	1 to 199	196
Milk from cows	(D)	3	200 +	290
Hogs and pigs	52	22	Other characteristics	
Sheep, goats, wool, mohair, milk	(D)	116	Hispanic/Latino/Spanish	35
Horses, ponies, mules, burros, donkeys	153	16	With military service	7
Aquaculture	-	-	New and beginning farmers	256
Other animals and animal products	(D)	8		
			Average age (years)	60.3
Top Crops in Acres ^d			Demographic Data in the Census of Agriculture	
Forage (hay/haylage), all	17,203	Have internet access	78	The agriculture census is a complete count of U.S. farms and ranches and the people who operate them. Demographic information is available at national, state, and county levels, and for classes of farm and congressional districts. Results from the 2017 Census and earlier are available through the searchable database Quick Stats, the new Census Data Query Tool, downloadable PDF reports, maps, and topic-specific Highlights and Profiles. See also the video “What’s New in the 2017 Census?”(www.nass.usda.gov/Newsroom/VideoFeatures/index.php).
Pecans, all	1,042	Farm organically	(Z)	
Wheat for grain, all	693	Sell directly to consumers	3	
Oats for grain	490	Hire farm labor	19	
Corn for silage	(D)	Are family farms	99	
Livestock Inventory (Dec 31, 2017)				
Broilers and other meat-type chickens	-			
Cattle and calves	31,227			
Goats	5,354			
Hogs and pigs	460			
Horses and ponies	964			
Layers	1,817			
Pullets	118			
Sheep and lambs	7,802			
Turkeys	24			

See 2017 Census of Agriculture, U.S. Summary and State Data, for complete footnotes, explanations, definitions, commodity descriptions, and methodology.

^a This race alone or in combination with other races. ^b May not add to 100% due to rounding. ^c Data collected for a maximum of four producers per farm.

^d Crop commodity names may be shortened; see full names at www.nass.usda.gov/go/cropnames.pdf. ^e Position below the line does not indicate rank.

(D) Withheld to avoid disclosing data for individual operations. (NA) Not available. (Z) Less than half of the unit shown. (-) Represents zero.