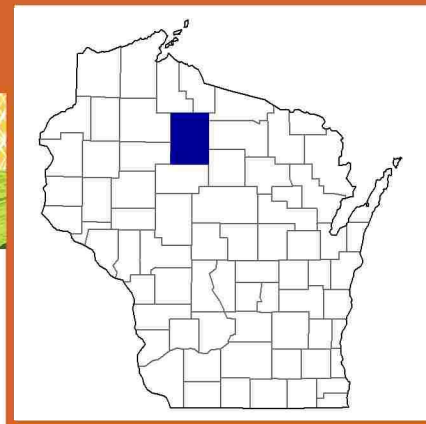
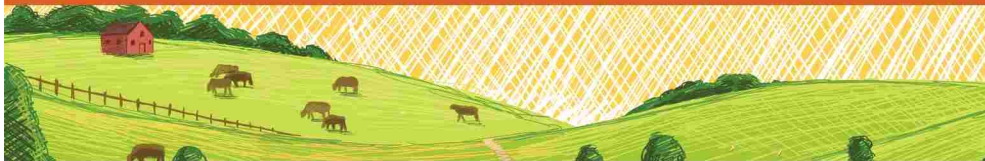




Price County, Wisconsin Farms with American Indian or Alaska Native Producers^a

Data not available at this geographic level for farms with American Indian or Alaska Native Producers.

^a This race alone or in combination with other races.



Price County, Wisconsin Farms with Asian Producers^a

Data not available at this geographic level for farms with Asian Producers.

^a This race alone or in combination with other races.



Price County, Wisconsin Farms with Black or African American Producers^a

Data not available at this geographic level for farms with Black or African American Producers.

^a This race alone or in combination with other races.



Price County, Wisconsin Farms with Native Hawaiian or Other Pacific Islander Producers^a

Data not available at this geographic level for farms with Native Hawaiian or Other Pacific Islander Producers.

^a This race alone or in combination with other races.



Price County, Wisconsin Farms with White Producers^a

Data not available at this geographic level for farms with White Producers.

^a This race alone or in combination with other races.



Price County, Wisconsin Farms with Hispanic, Latino, or Spanish Producers

Data not available at this geographic level for farms with Hispanic, Latino, or Spanish Producers.



Price County, Wisconsin Farms with Female Producers

Total and Per Farm Overview, 2017

	Farms with Female Producers	All Farms
Number of farms	218	410
Land in farms (acres)	39,622	89,203
Average size of farm (acres)	182	218
Total	(\$)	(\$)
Market value of products sold	8,377,000	25,801,000
Government payments	46,000	105,000
Farm-related income	592,000	1,625,000
Total farm production expenses	5,522,000	20,625,000
Net cash farm income	3,493,000	6,906,000
Per farm average	(\$)	(\$)
Market value of products sold	38,426	62,930
Government payments (average per farm receiving)	1,265	1,723
Farm-related income	8,228	11,525
Total farm production expenses	25,328	50,305
Net cash farm income	16,024	16,845

Share of Sales by Type (%)

Crops	34
Livestock, poultry, and products	66

Land in Farms by Use (%) ^b

Cropland	35
Pastureland	9
Woodland	48
Other	8

Land Use Practices (% of farms)

No till	2
Reduced till	4
Intensive till	16
Cover crop	8

Farms by Value of Sales

	Number	Percent ^b
Less than \$2,500	79	36
\$2,500 to \$4,999	29	13
\$5,000 to \$9,999	41	19
\$10,000 to \$24,999	23	11
\$25,000 to \$49,999	11	5
\$50,000 to \$99,999	13	6
\$100,000 or more	22	10
Total	218	100

Farms by Size

	Number	Percent ^b
1 to 9 acres	2	1
10 to 49 acres	47	22
50 to 179 acres	89	41
180 to 499 acres	68	31
500 to 999 acres	10	5
1,000 + acres	2	1
Total	218	100

2017 CENSUS OF AGRICULTURE Race/Ethnicity/Gender Profile

Market Value of Agricultural Products Sold			Total Producers ^c	
	Sales (\$1,000)	No. of Farms		
Total	8,377	218	Age	
			<35	11
			35 – 64	146
			65 and older	69
Crops	2,838	122	Race	
Grains, oilseeds, dry beans, dry peas	192	25	American Indian/Alaska Native	-
Tobacco	-	-	Asian	-
Cotton and cottonseed	-	-	Black/African American	-
Vegetables, melons, potatoes, sweet potatoes	(D)	2	Native Hawaiian/Pacific Islander	-
Fruits, tree nuts, berries	(D)	3	White	225
Nursery, greenhouse, floriculture, sod	(D)	3	More than one race	1
Cultivated Christmas trees, short rotation woody crops	(D)	8	Primary occupation	
Other crops and hay	879	110	Farming	88
			Other	138
Livestock, poultry, and products	5,539	123	Days worked off farm	
Poultry and eggs	15	33	None	85
Cattle and calves	1,345	83	1 to 199	55
Milk from cows	3,996	30	200 +	86
Hogs and pigs	(D)	8	Other characteristics	
Sheep, goats, wool, mohair, milk	77	11	Hispanic/Latino/Spanish	13
Horses, ponies, mules, burros, donkeys	14	13	With military service	-
Aquaculture	(D)	2	New and beginning farmers	58
Other animals and animal products	56	4	<i>Average age (years)</i>	57.6
Top Crops in Acres ^d		Percent of farms that:	Demographic Data in the Census of Agriculture	
Forage (hay/haylage), all	10,045	Have internet access	76	<p>The agriculture census is a complete count of U.S. farms and ranches and the people who operate them. Demographic information is available at national, state, and county levels, and for classes of farm and congressional districts. Results from the 2017 Census and earlier are available through the searchable database Quick Stats, the new Census Data Query Tool, downloadable PDF reports, maps, and topic-specific Highlights and Profiles.</p> <p>See also the video “What’s New in the 2017 Census?” (www.nass.usda.gov/Newsroom/VideoFeatures/index.php).</p>
Corn for silage	621	Farm organically	(Z)	
Corn for grain	396	Sell directly to consumers	7	
Land in berries	(D)	Hire farm labor	17	
Cranberries	(D)	Are family farms	99	
Livestock Inventory (Dec 31, 2017)				
Broilers and other meat-type chickens	239			
Cattle and calves	4,384			
Goats	62			
Hogs and pigs	105			
Horses and ponies	371			
Layers	990			
Pullets	321			
Sheep and lambs	371			
Turkeys	38			

See 2017 Census of Agriculture, U.S. Summary and State Data, for complete footnotes, explanations, definitions, commodity descriptions, and methodology.

^a This race alone or in combination with other races. ^b May not add to 100% due to rounding. ^c Data collected for a maximum of four producers per farm.

^d Crop commodity names may be shortened; see full names at www.nass.usda.gov/go/cropnames.pdf. ^e Position below the line does not indicate rank.

(D) Withheld to avoid disclosing data for individual operations. (NA) Not available. (Z) Less than half of the unit shown. (-) Represents zero.