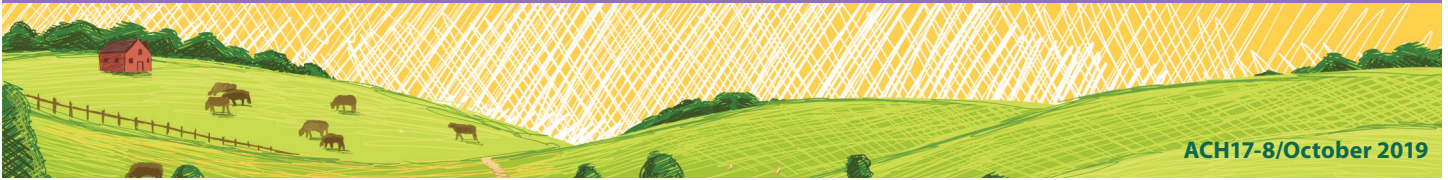


Asian Producers

More than half of farms specialize in fruit, vegetable, and nursery products



ACH17-8/October 2019

In 2017, the United States had 25,310 producers who identified as Asian, either alone or in combination with another race. They accounted for 0.7 percent of the country's 3.4 million producers, and are highly concentrated in California and Hawaii. Asian producers were younger and more likely to have recently started farming than U.S. producers overall. Asian-operated farms accounted for less than 2 percent of total U.S. agriculture sales; more than half are specialized in production of specialty crops.

25,310
producers



2.9 million
acres



\$7.5 billion
agriculture sales



Number and Location

The 2017 Census of Agriculture revised the demographic data collected to better capture the contributions of all persons involved in agricultural production. In response to detailed questions about farm decision making, more farms reported multiple individuals involved in farm operations.

As a result of the new approach to counting producers, the total number of U.S. producers increased 7 percent between 2012 and 2017. The increase in the number of Asian producers was 5 percent.

The top ten states accounted for 74 percent of Asian producers and 72 percent of Asian-operated farms. In California, Asian producers accounted for 6 percent of the state's total producers. In Hawaii, 35 percent of all producers identified as Asian. Of the total number of Asian-operated farms (18,338), California had 4,649, followed by Hawaii, with 3,105 farms.

Number of Producers and Farms, Asian and All U.S.

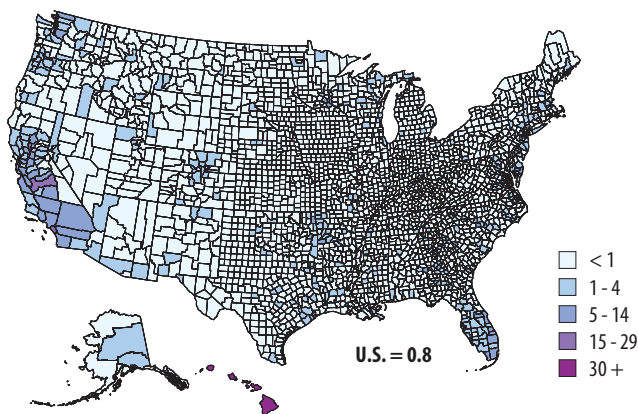
	2012	2017	% change
Producers			
Asian	24,067	25,310	+5
All U.S.	3,180,074	3,399,834	+7
Farms			
Asian-operated	18,007	18,338	+2
All U.S.	2,109,303	2,042,220	-3

Top States Asian Producers, 2017

California	7,038
Hawaii	4,259
Texas	1,908
Florida	1,489
Washington	1,008
Oregon	726
Arkansas	653
Oklahoma	589
Missouri	576
Wisconsin	544

45 The percent of total Asian producers who live and farm in California and Hawaii.

Asian-operated Farms as Percent of Total Farms, by County, 2017



The counties with more than 200 Asian-operated farms were all in Hawaii or California. The top three: Hawaii County, Hawaii (1,370 farms), Fresno County, California (802 farms), and Honolulu County, Hawaii (525 farms).

Note: Based on 15,826 farms with producers who identified themselves as Asian alone.

SNAPSHOT Asian Producers, 2017

Number = 25,310*

	Asian (percent)	All U.S.
Sex		
Male	55	64
Female	45	36
Age		
<35	9	8
35 - 64	65	58
65+	26	34
Years farming		
10 or less	40	27
11 or more	60	73
Lived on their farm	61	74
Worked off farm		
No days	32	39
1 to 199 days	30	21
200+ days	38	40
Primary occupation		
Farming	48	42
Other	52	58
Hispanic	6	3
With military service	7	11
Average age (years)	54.9	57.5

*Of the total, 22,016 identified themselves as Asian alone, and 3,294 as Asian in combination with another race. Data collected for up to four producers per farm.

About the Census

The Census of Agriculture, conducted once every five years, is a complete count of U.S. farms and ranches and the people who operate them. Results from the 2017 and earlier censuses are available at national, state, and county levels.

See the searchable database Quick Stats, the new Census Data Query Tool, downloadable PDF reports, maps, and a variety of topic-specific products including profiles by race, ethnicity, and sex.

www.nass.usda.gov/AgCensus

Producer Characteristics

A higher proportion of Asian producers than U.S. producers overall are female (45 percent of Asian producers, 36 percent of U.S. producers, in 2017). Asian producers were younger on average (54.9 years compared with 57.5), and more likely to be a beginning farmer. Forty percent had farmed 10 years or fewer, compared with 27 percent of U.S. producers overall.

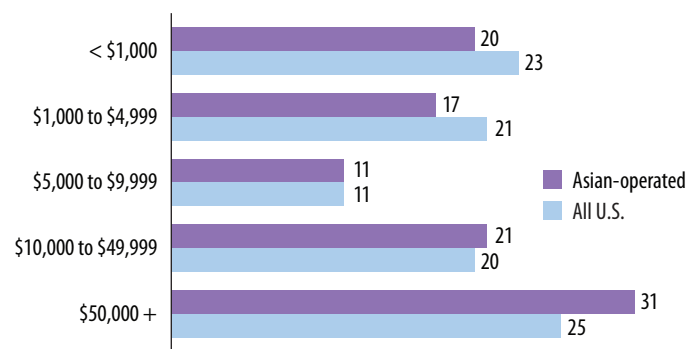
61

The percent of Asian producers who live on their farm.

Farm Characteristics

Asian-operated farms sold \$7.5 billion in agricultural products in 2017, with 58 percent (\$4.3 billion) in crop sales and 42 percent (\$3.2 billion) in sales of livestock and livestock products. These farms accounted for 1.9 percent of total U.S. agriculture sales. They received \$27 million in government payments.

Asian-operated and U.S. Farms by Economic Class, 2017 (percent)
(sales and government payments combined)



Thirty-seven percent of Asian-operated farms had sales and government payments of less than \$5,000; 31 percent had sales and payments of \$50,000 or more, compared with 25 percent of all farms.

Farms and Land

Asian-operated farms accounted for 2.9 million acres of farmland, 0.3 percent of the U.S. total. Two-thirds (67 percent) were less than 50 acres in size. The average size of Asian-operated farms was 160 acres.

Farm Size in Acres	Asian-operated (percent of total)	All U.S.
1 to 9	33	13
10 to 49	34	29
50 to 179	21	28
180 to 499	7	15
500 +	5	15

More than three-fourths (78 percent) of Asian-operated farms were operated by farmers who own all the land they farm, 12 percent by farmers who rent all the land.

Farm Specialization^a

More than half (52 percent) of Asian-operated farms specialized in production of specialty crops, compared with 9 percent of U.S. farms overall.

	% of farms
Oilseeds and grains	3
Specialty crops	52
Vegetables and melons	12
Fruits, tree nuts, berries	30
Greenhouse, nursery, floriculture	10
Other crops	11
Cattle and dairy	15
Poultry and eggs	8
Other animals	11

5,526

The number of Asian-operated farms specializing in fruit, tree nut, and berry production.

^aRefers to the North American Industry Classification System (NAICS). More than half of a farm's sales come from the commodity.

74

The percent of Asian-operated farms with internet access.