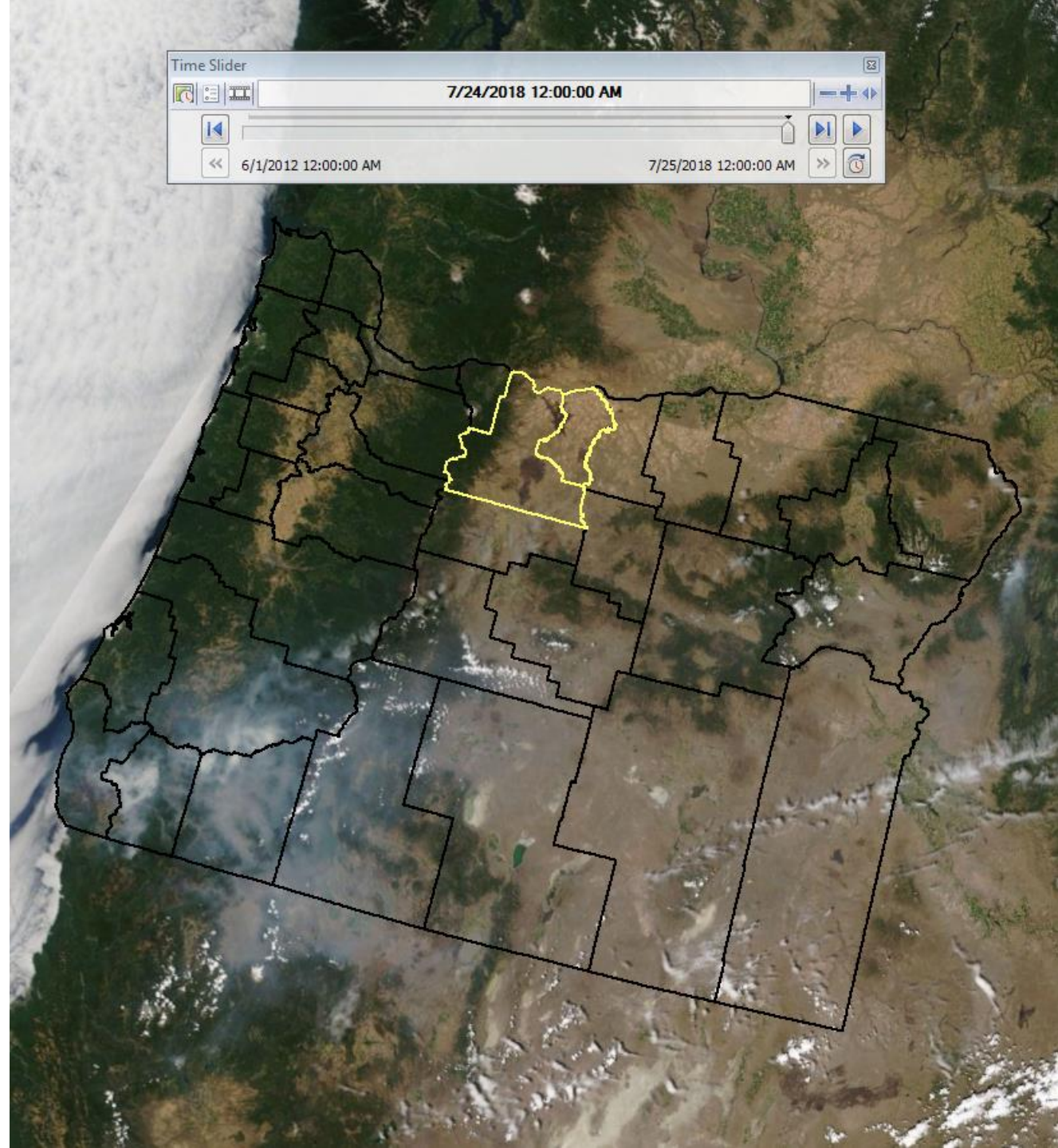


Oregon Substation Fire

First Day of Fire: July 17, 2018 (Day 198)

Contained: July 22, 2018 (Day 203)

Counties Affected: Wasco, Sherman



Before Fire 7/17/18

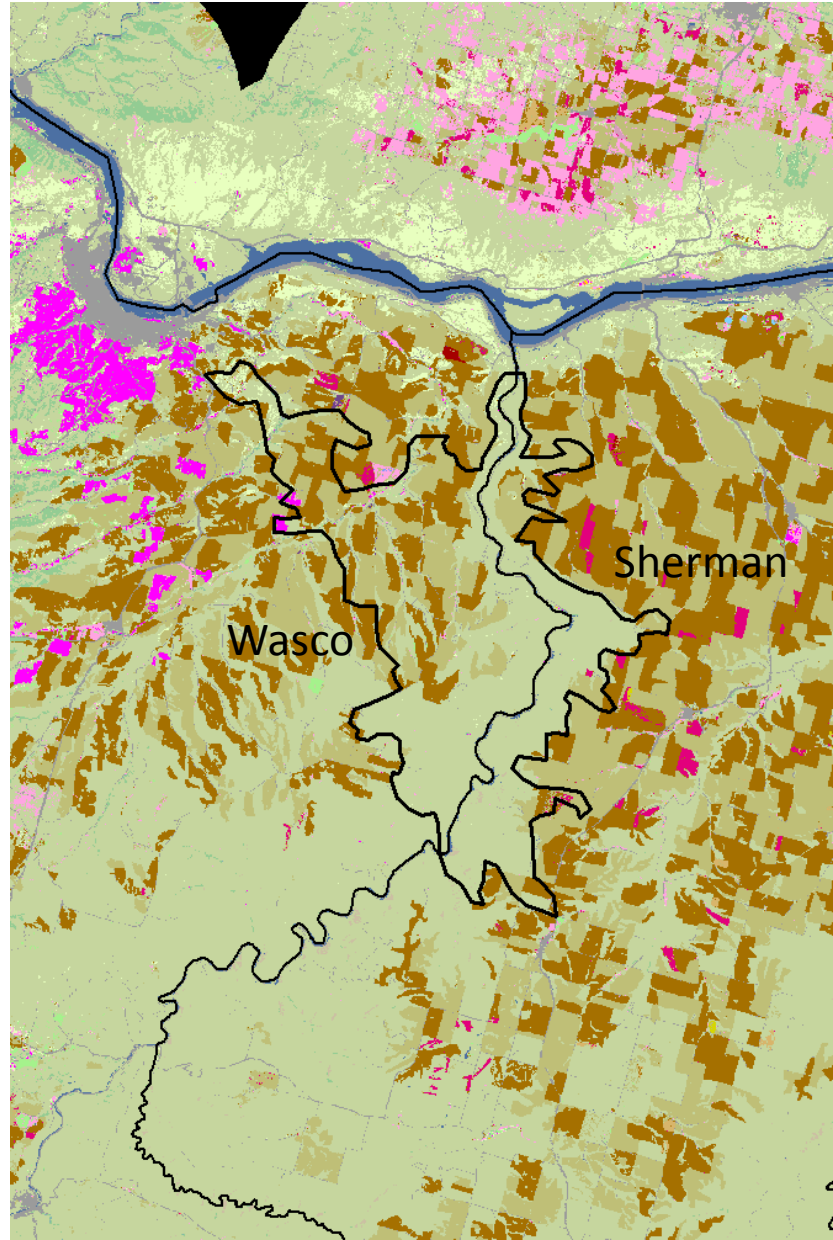
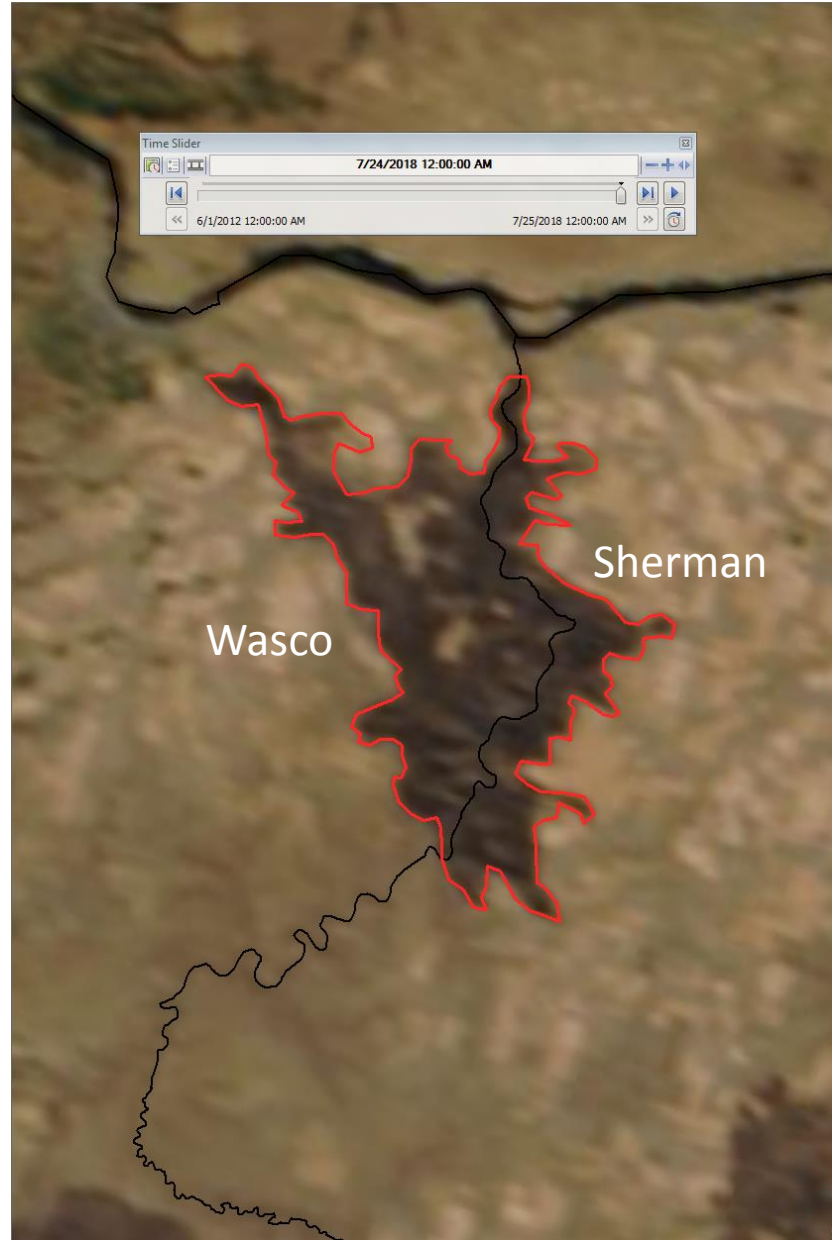
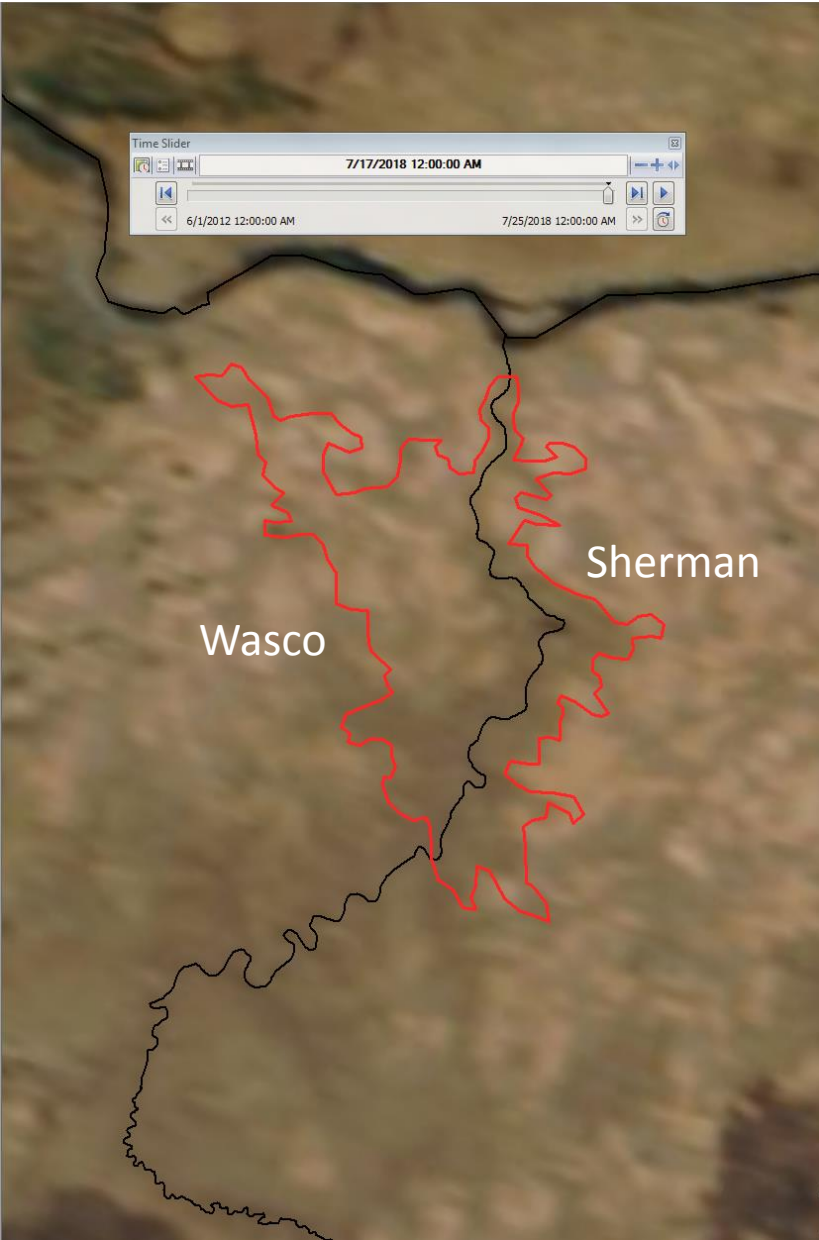


After Fire 7/24/18

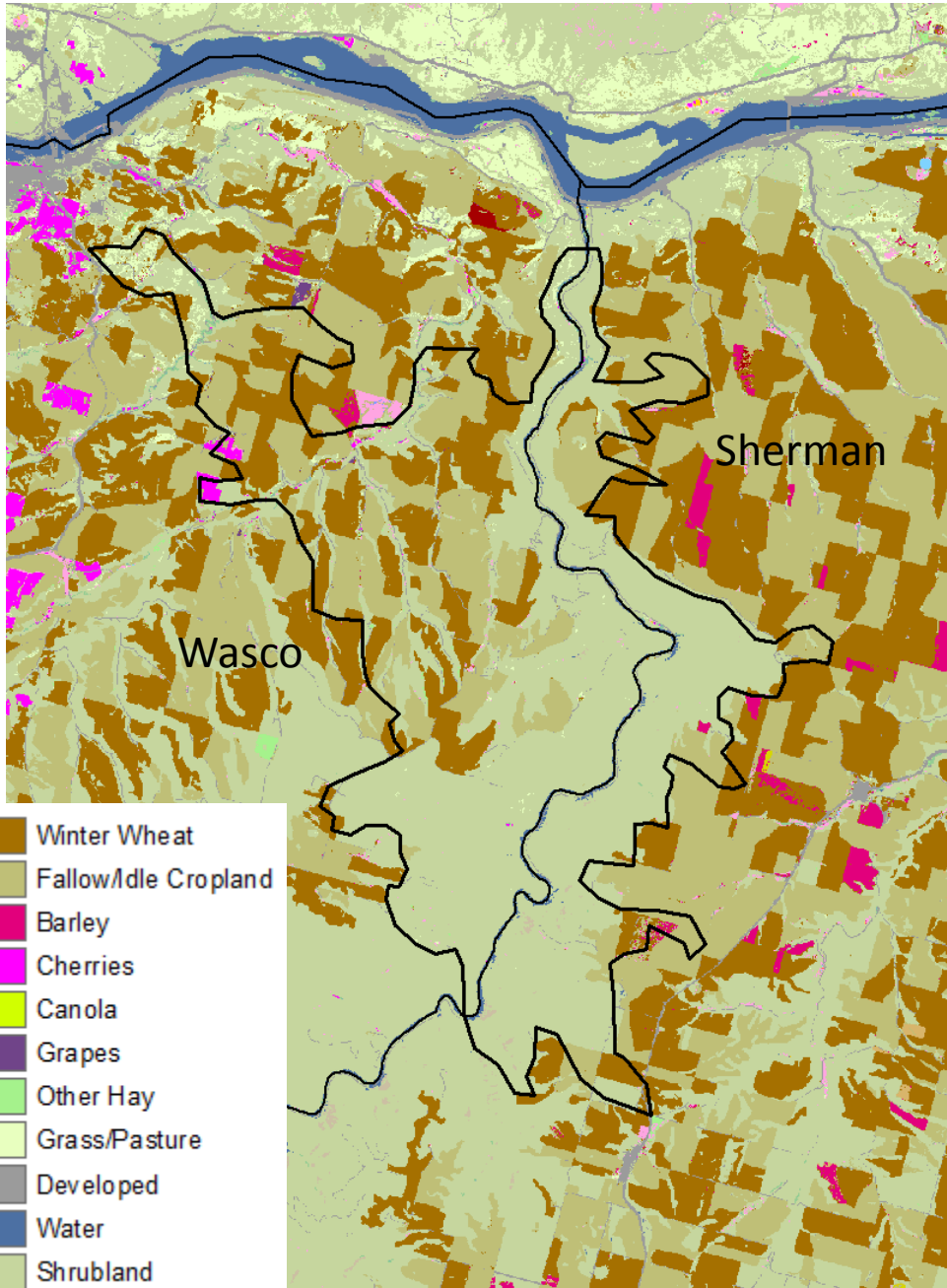


Digitize Burn Scar

Overlay 2017 Cropland Data Layer



2017 Cropland Data Layer



Based on the 2017 Cropland Data Layer Not Official NASS Estimates

Wasco County	Total Acres	Acres in Fire Perimeter	Percent in Fire Perimeter
Winter Wheat	57,535.01	8,703.63	15.13%
Fallow/Idle Cropland	68,601.59	11,002.08	16.04%
Canola	0.67	0.00	0.00%
Barley	886.24	18.01	2.03%
Cherries	11,633.90	229.29	1.97%
Grapes	177.69	29.13	16.40%
Other Hay	9,567.63	54.71	0.57%
Grass/Pasture	20,435.83	502.39	2.46%
Other Cropland	16,854.83	128.10	0.76%
Non-Cropland	1,347,249.65	22,482.75	1.67%
All Land	1,532,943.05	43,150.09	2.81%

Sherman County	Total Acres	Acres in Fire Perimeter	Percent in Fire Perimeter
Winter Wheat	108,423.10	1,489.82	1.37%
Fallow/Idle Cropland	120,468.43	3,787.60	3.14%
Canola	0.00	0.00	N/A
Barley	3,306.78	83.40	2.52%
Cherries	141.44	4.67	3.30%
Grapes	61.83	1.11	1.80%
Other Hay	598.46	8.67	1.45%
Grass/Pasture	1,568.33	18.68	1.19%
Other Cropland	3,300.78	6.23	0.19%
Non-Cropland	294,139.63	17,051.88	5.80%
All Land	532,008.79	22,452.06	4.22%

Based on the 2017 Cropland Data Layer
Not Official NASS Estimates

Oregon (All Counties)	Total Acres	Acres in Fire Perimeter	Percent in Fire Perimeter
Winter Wheat	695,859.94	10,193.45	1.46%
Fallow/Idle Cropland	746,370.62	14,789.68	1.98%
Canola	4,957.84	0.00	0.00%
Barley	44,474.67	101.41	0.23%
Cherries	20,965.57	233.96	1.12%
Grapes	5,702.64	30.25	0.53%
Other Hay	514,345.99	63.38	0.01%
Grass/Pasture	2,991,927.47	521.07	0.02%
Other Cropland	1,754,992.17	134.33	0.01%
Non-Cropland	55,270,576.43	39,534.63	0.07%
All Land	62,050,173.36	65,602.15	0.11%