

2021 Kansas Wildfires – Event Overview

- **Event:** Wildfires caused by power lines knocked over by high winds
- **Date:** December 15-17, 2021
- **Location:** Central Kansas, including Russell, Rooks, Ellis, Osborne, Trego, Rush, Lane, Ness, and Wichita counties
- **Agriculture Affected:** Grassland/pasture
- **Disclaimer:** Acres reported reflect planted acres from the 2020 Cropland Data Layer and 2020 Cultivated Layer and are not official NASS estimates. Most row crop fields were harvested prior to the fire events ([Kansas Crop Progress and Condition Report week ending December 12, 2021](#)).

Figure 1: Fire Perimeter Data overlaid on 2020 Cultivated Layer (planted acres). Most row crop fields were harvested prior to the fire events.

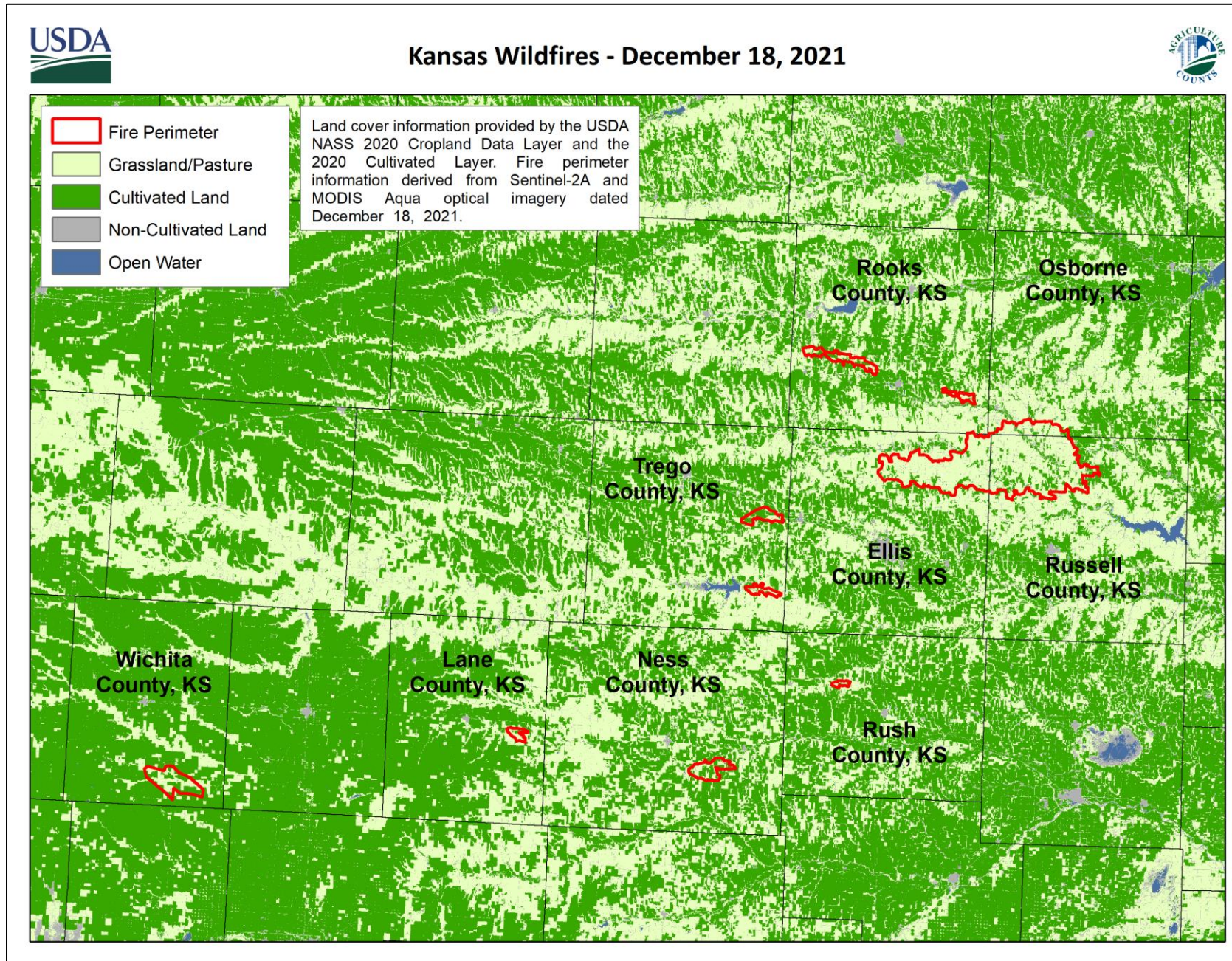


Figure 2: Fire Perimeter Data overlaid on Sentinel-2 Imagery dated December 18, 2021

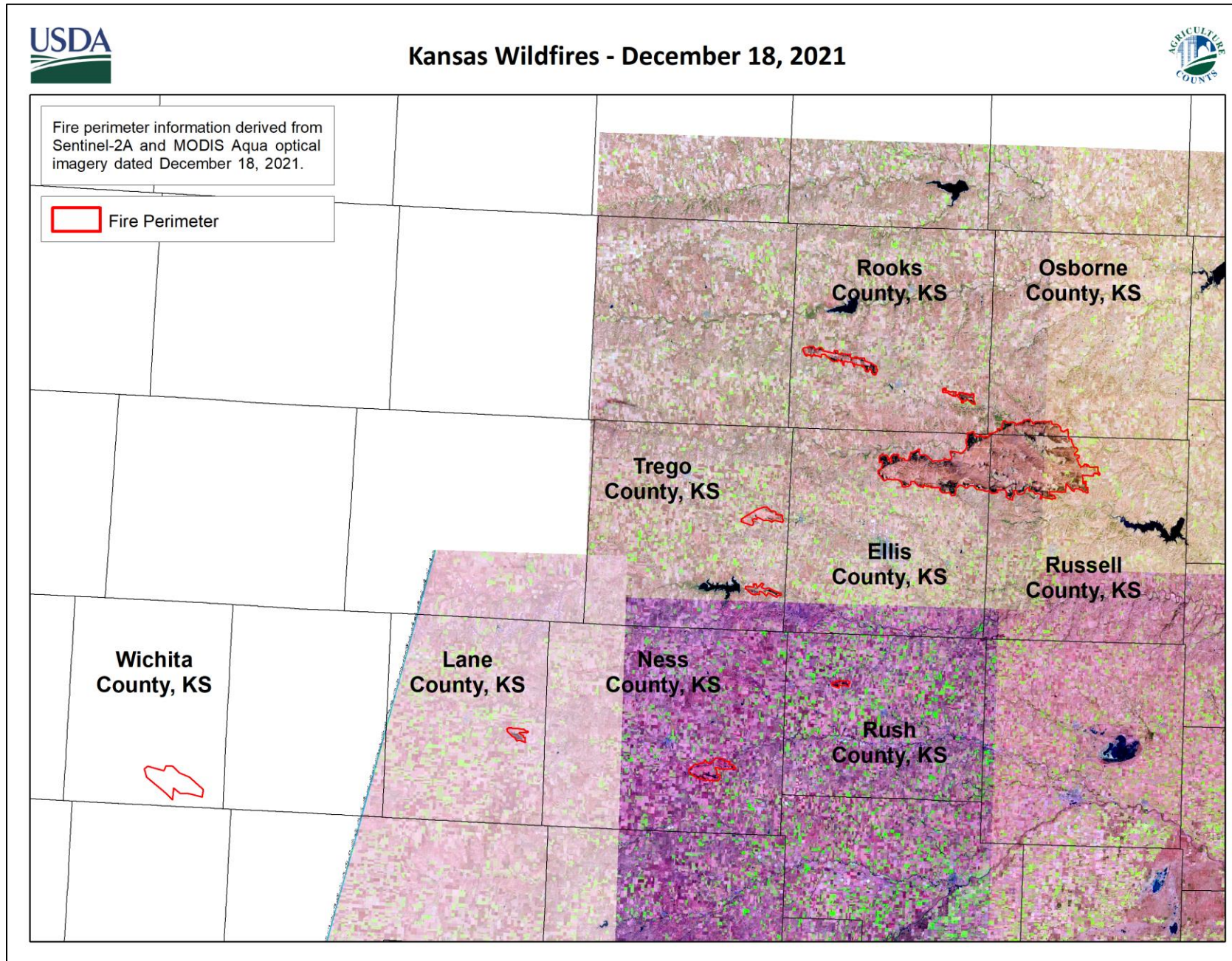


Table 1: Acres within Fire Perimeter by County, Percent of Land within Fire Perimeter by County

Disclaimer: Acres are not official NASS estimates and are provided by the 2020 Cropland Data Layer (planted acres). Most row crop fields were harvested prior to the fire events.

Crop Land Cover Category	Russell County, KS		Osborne County, KS		Rooks County, KS		Ellis County, KS		Trego County, KS		Rush County, KS		Ness County, KS		Lane County, KS		Wichita County, KS	
	Acres within Fire Perimeter	Percent within Fire Perimeter	Acres within Fire Perimeter	Percent within Fire Perimeter	Acres within Fire Perimeter	Percent within Fire Perimeter	Acres within Fire Perimeter	Percent within Fire Perimeter	Acres within Fire Perimeter	Percent within Fire Perimeter	Acres within Fire Perimeter	Percent within Fire Perimeter	Acres within Fire Perimeter	Percent within Fire Perimeter	Acres within Fire Perimeter	Percent within Fire Perimeter	Acres within Fire Perimeter	Percent within Fire Perimeter
Corn	835.31	10.07%	90.96	0.27%	766.59	2.37%	145.45	1.28%	905.81	2.73%	0.67	0.00%	18.90	0.10%	30.91	0.07%	868.67	0.85%
Cotton	-	0.00%	-	0.00%	-	0.00%	0.67	4.48%	-	0.00%	-	0.00%	0.44	3.77%	-	0.00%	-	0.00%
Sorghum	4,342.70	8.43%	518.18	0.78%	726.79	1.03%	1,217.17	1.65%	938.28	1.26%	106.97	0.14%	-	0.00%	116.76	0.16%	1,231.40	3.14%
Soybeans	626.49	5.67%	89.18	0.19%	388.97	1.70%	61.60	5.82%	1.11	0.16%	-	0.00%	1,093.96	173.02%	-	0.00%	-	0.00%
Sunflower	0.22	0.10%	-	0.00%	-	0.00%	3.34	0.32%	-	0.00%	-	0.00%	-	0.00%	-	0.00%	-	0.00%
Barley	0.67	2.91%	0.44	3.64%	-	0.00%	0.89	1.46%	0.22	2.04%	-	0.00%	-	0.00%	-	0.00%	-	0.00%
Winter Wheat	5,536.96	7.97%	551.09	0.66%	735.46	1.02%	2,042.69	2.40%	810.41	1.06%	109.42	0.11%	1,086.17	0.00%	163.02	0.24%	2,645.38	2.53%
Double Crop - Winter Wheat/Soybeans	0.44	7.14%	-	0.00%	-	0.00%	0.22	11.11%	-	0.00%	-	0.00%	-	0.00%	-	0.00%	-	0.00%
Rye	3.56	4.53%	0.44	0.85%	0.44	1.90%	0.89	3.05%	3.11	56.00%	-	0.00%	-	0.00%	-	0.00%	-	0.00%
Oats	840.87	20.26%	52.71	2.40%	98.30	3.18%	79.62	4.58%	5.12	0.60%	3.11	0.31%	0.89	0.14%	-	0.00%	0.22	0.05%
Millet	36.03	62.31%	-	0.00%	-	0.00%	0.44	5.26%	-	0.00%	-	0.00%	-	0.00%	-	0.00%	-	0.00%
Alfalfa	468.59	10.93%	81.62	1.21%	37.14	0.54%	161.01	4.78%	230.85	7.07%	0.67	0.01%	33.14	1.41%	41.14	4.88%	1.56	0.63%
Other Hay/Non Alfalfa	233.74	16.41%	24.02	1.07%	8.01	1.68%	130.55	20.33%	0.67	1.40%	-	0.00%	0.44	0.19%	16.46	113.85%	-	0.00%
Other Crops	0.22	11.11%	-	0.00%	-	0.00%	-	0.00%	-	0.00%	-	0.00%	-	0.00%	-	0.00%	-	0.00%
Peas	-	0.00%	-	0.00%	0.22	1.96%	0.44	40.00%	-	0.00%	-	0.00%	-	0.00%	-	0.00%	-	0.00%
Sod/Grass Seed	0.22	3.03%	-	0.00%	-	0.00%	0.67	7.50%	-	0.00%	-	0.00%	-	0.00%	-	0.00%	-	0.00%
Fallow/Idle Cropland	2,172.35	6.39%	247.53	1.25%	1,066.16	2.44%	1,555.43	2.66%	882.24	1.20%	139.66	0.19%	1,855.44	1.75%	-	0.00%	2,716.10	2.48%
Triticale	50.71	11.25%	5.12	0.87%	3.78	0.33%	58.04	3.55%	61.60	5.64%	-	0.00%	0.22	0.03%	4.23	0.21%	3.78	1.02%
Double Crop - Winter Wheat/Corn	0.22	50.00%	0.22	0.28%	-	0.00%	-	0.00%	-	0.00%	-	0.00%	-	0.00%	-	0.00%	60.71	97.85%
Double Crop - Oats/Corn	-	0.00%	-	0.00%	-	0.00%	-	0.00%	-	0.00%	-	0.00%	-	0.00%	-	0.00%	0.22	9.09%
Double Crop - Winter Wheat/Sorghum	22.46	18.98%	-	0.00%	76.95	9.78%	8.23	1.74%	1.78	0.46%	-	0.00%	0.22	0.00%	-	0.00%	-	0.00%
Non-Crop Land Cover Category	Russell County, KS		Osborne County, KS		Rooks County, KS		Ellis County, KS		Trego County, KS		Rush County, KS		Ness County, KS		Lane County, KS		Wichita County, KS	
	Acres within Fire Perimeter	Percent within Fire Perimeter	Acres within Fire Perimeter	Percent within Fire Perimeter	Acres within Fire Perimeter	Percent within Fire Perimeter	Acres within Fire Perimeter	Percent within Fire Perimeter	Acres within Fire Perimeter	Percent within Fire Perimeter	Acres within Fire Perimeter	Percent within Fire Perimeter	Acres within Fire Perimeter	Percent within Fire Perimeter	Acres within Fire Perimeter	Percent within Fire Perimeter	Acres within Fire Perimeter	Percent within Fire Perimeter
Grassland/Pasture	54,849.60	16.06%	9,392.83	3.49%	5,842.53	2.10%	46,450.20	15.45%	3,844.09	1.37%	803.51	0.51%	3,840.98	1.14%	1,881.68	1.12%	6,928.03	7.98%
Open Water	432.11	3.61%	84.51	3.29%	25.35	0.55%	179.03	11.90%	22.02	0.55%	2.67	0.25%	17.35	2.06%	0.89	0.34%	-	0.00%
Developed/Open Space	1,459.13	8.85%	202.82	1.82%	184.81	1.82%	676.75	4.63%	306.90	1.93%	33.14	0.21%	201.04	1.03%	56.04	0.54%	257.09	1.87%
Developed/Low Intensity	586.23	10.43%	110.53	1.58%	127.21	1.49%	467.70	4.97%	49.37	2.14%	1.78	0.07%	9.56	0.47%	15.35	1.92%	2.45	0.34%
Developed/Med Intensity	15.35	1.87%	4.23	0.80%	7.78	0.59%	36.25	1.24%	4.45	1.26%	-	0.00%	0.67	0.21%	1.11	0.86%	0.44	0.38%
Developed/High Intensity	0.89	0.53%	-	0.00%	-	0.00%	0.67	0.08%	0.89	1.03%	-	0.00%	-	0.00%	-	0.00%	-	0.00%
Barren	14.46	13.71%	0.22	0.09%	1.78	0.57%	59.16	14.19%	3.34	0.52%	-	0.00%	-	0.00%	6.45	0.42%	4.00	3.71%
Deciduous Forest	1,440.67	11.60%	473.92	2.97%	19.35	0.32%	490.60	18.19%	6.00	2.21%	-	0.00%	-	0.00%	9.56	1.67%	-	0.00%
Evergreen Forest	0.22	33.33%	-	0.00%	-	0.00%	0.22	6.25%	-	0.00%	-	0.00%	-	0.00%	-	0.00%	-	0.00%
Mixed Forest	3.34	9.43%	-	0.00%	-	0.00%	1.33	0.88%	-	0.00%	-	0.00%	-	0.00%	-	0.00%	-	0.00%
Shrubland	96.74	48.82%	42.03	5.40%	7.56	0.80%	116.53	33.53%	2.89	15.85%	-	0.00%	-	0.00%	-	0.00%	2.00	1.47%
Woody Wetlands	56.93	19.10%	13.12	2.55%	92.07	1.49%	155.23	4.42%	224.84	4.29%	-	0.00%	36.47	1.64%	1.56	1.01%	-	0.00%
Herbaceous Wetlands	42.48	8.83%	8.01	2.60%	44.92	1.88%	43.81	5.34%	33.14	1.43%	-	0.00%	16.46	1.49%	2.45	0.87%	-	0.00%