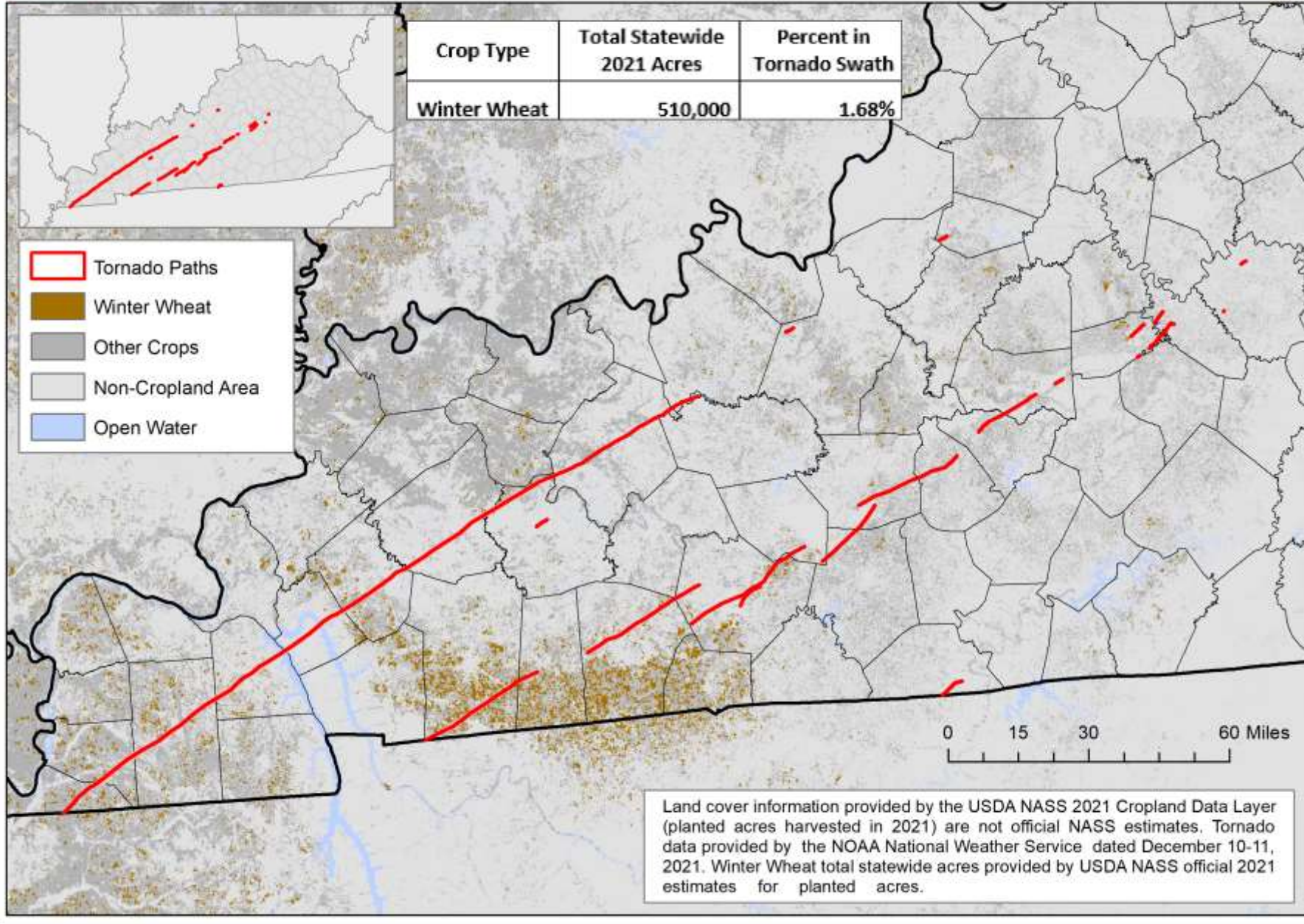


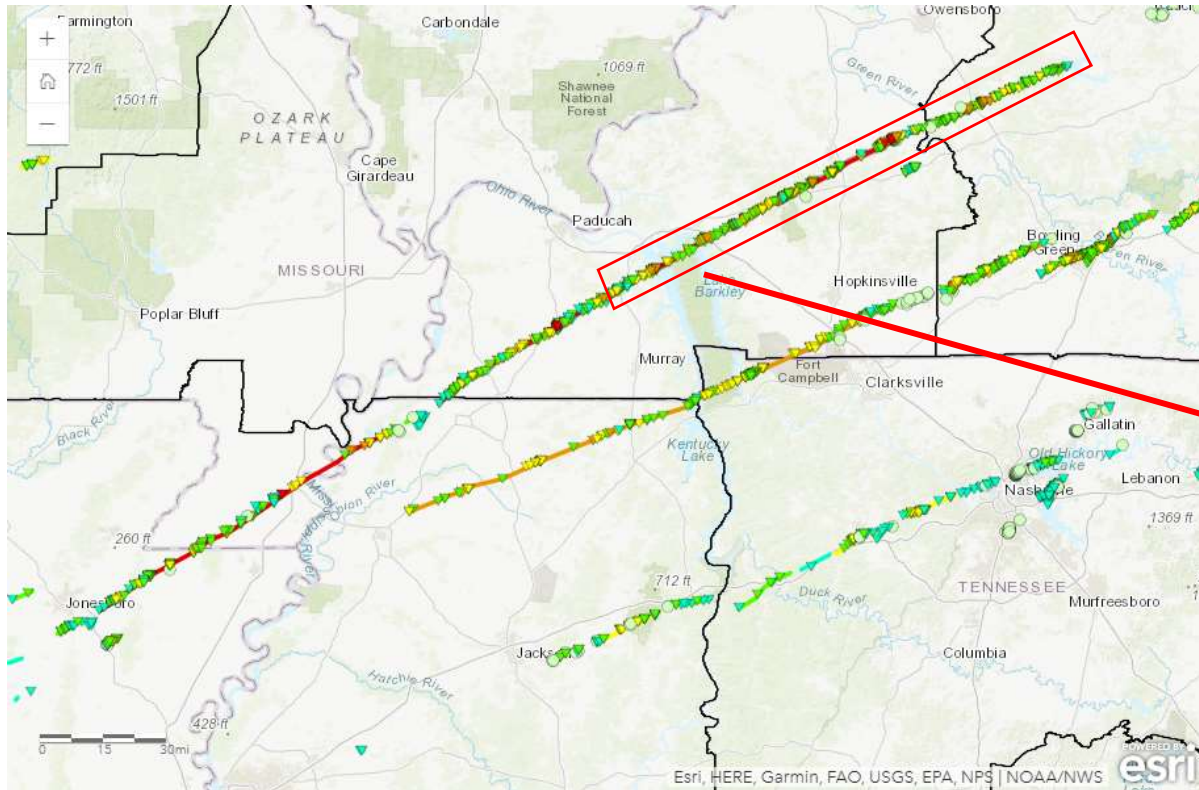
Kentucky Tornado Event Dec 10-11 2021

NASS SARS

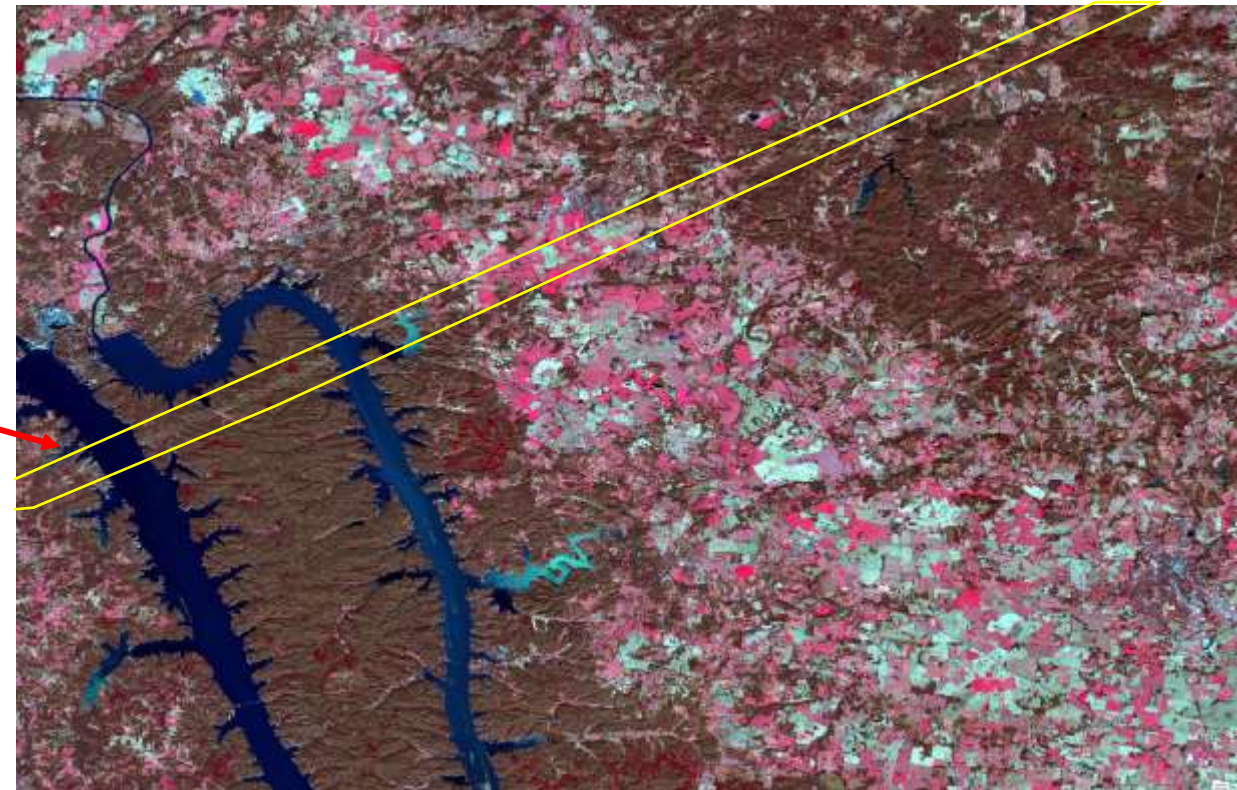




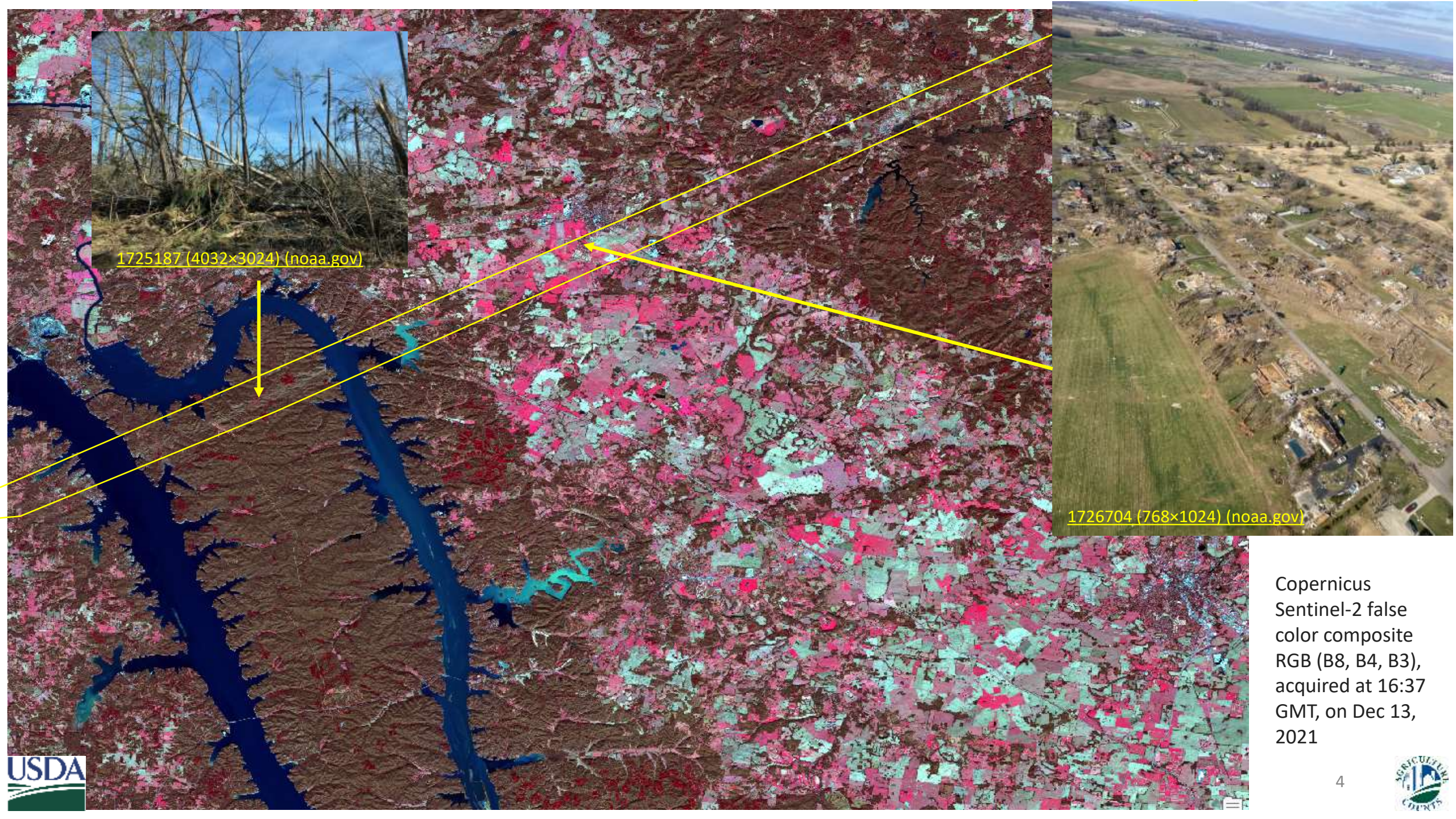
Dec 10-11 2021 Tornado Event



[Dec 10-11 2021 Tornado Event \(weather.gov\)](https://www.weather.gov)



Copernicus Sentinel-2 false color composite RGB (B8, B4, B3), acquired at 16:37 GMT, on Dec 13, 2021



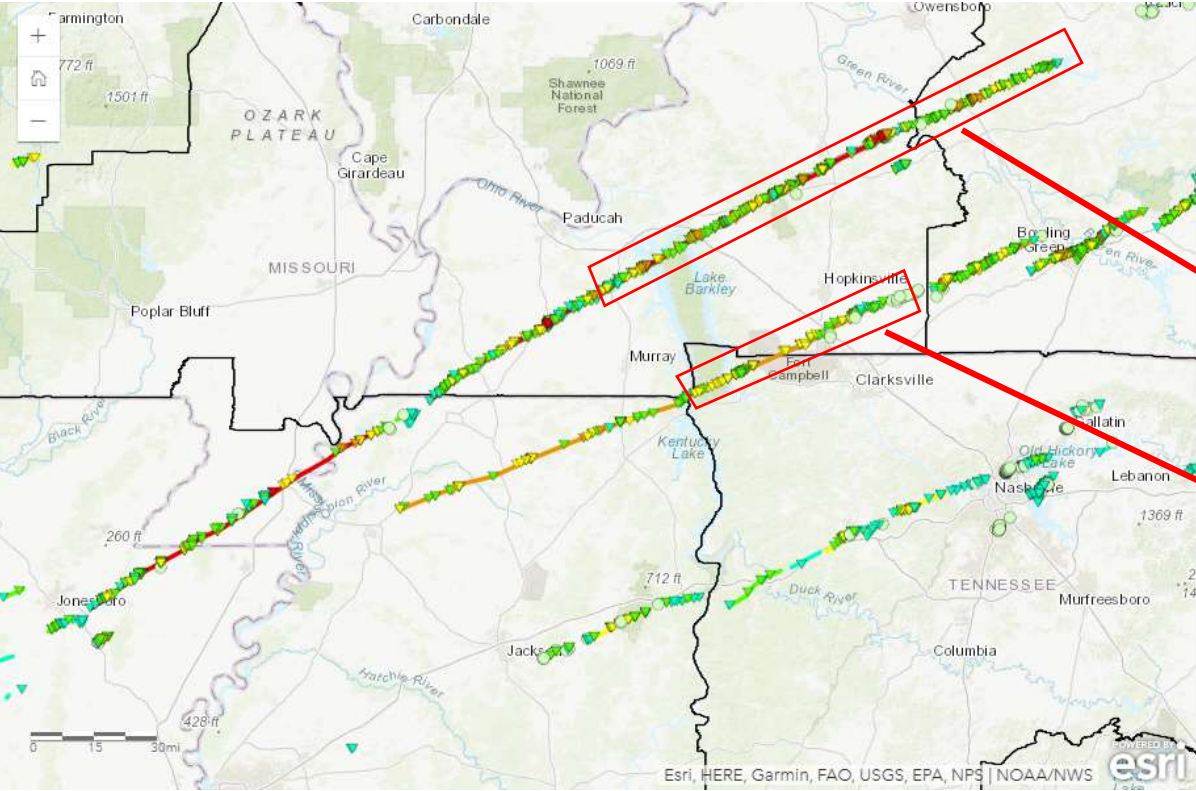
1725187 (4032x3024) (noaa.gov)

1726704 (768x1024) (noaa.gov)

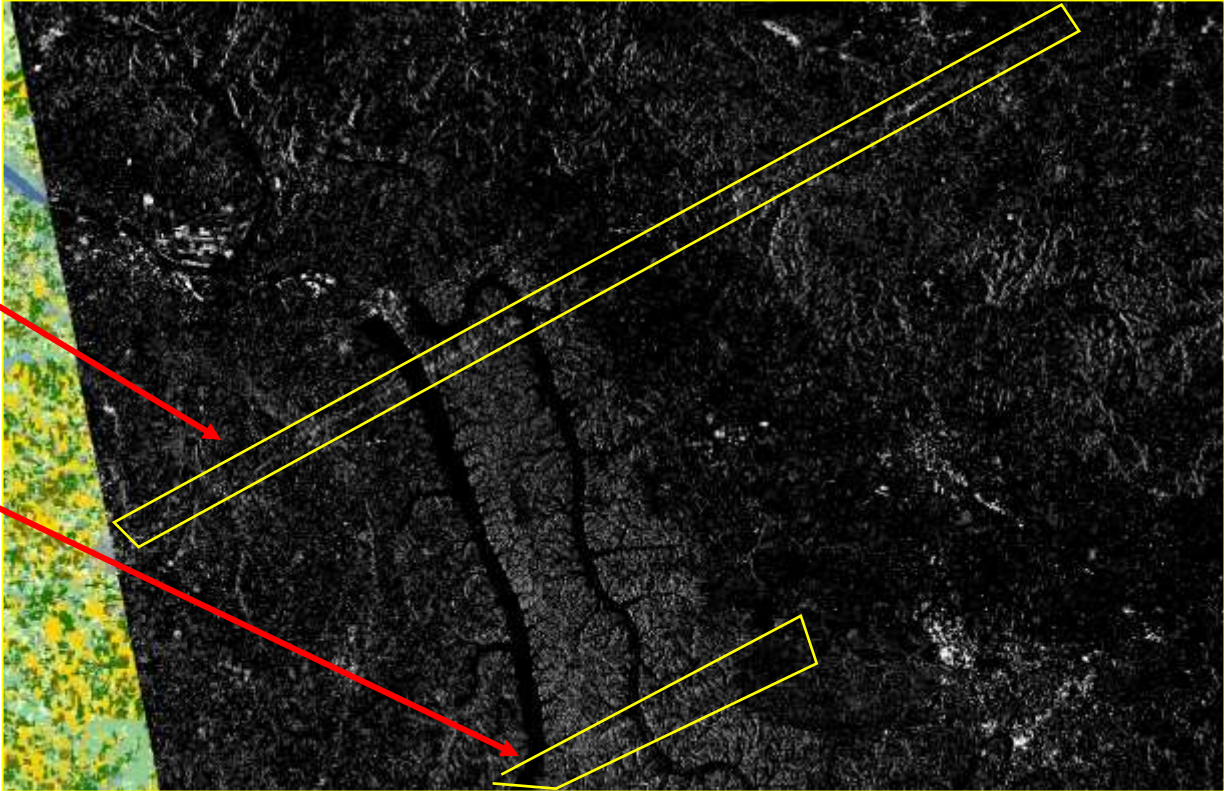
Copernicus Sentinel-2 false color composite RGB (B8, B4, B3), acquired at 16:37 GMT, on Dec 13, 2021



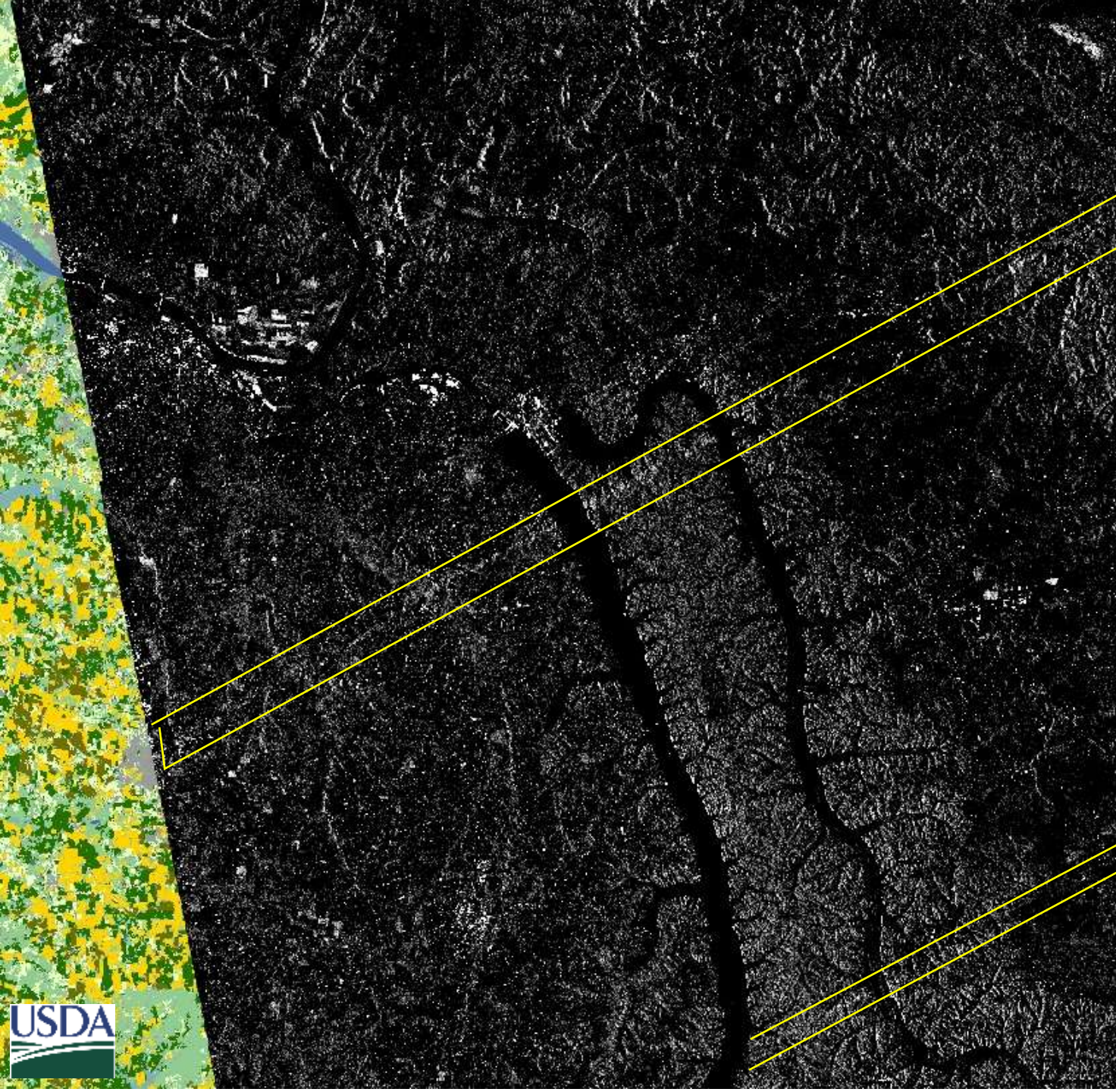
Dec 10-11 2021 Tornado Event



[Dec 10-11 2021 Tornado Event \(weather.gov\)](https://www.weather.gov)



Copernicus Sentinel-1 VV polarization, acquired at 23:47 GMT, on Dec 16, 2021



https://services.dat.noaa.gov/arcgis/rest/services/nws_damageassessmenttoolkit/DamageViewer/MapServer/0/2600204/attachments/1599963

Copernicus Sentinel-1 VV polarization, acquired at 23:47 GMT, on Dec 16, 2021



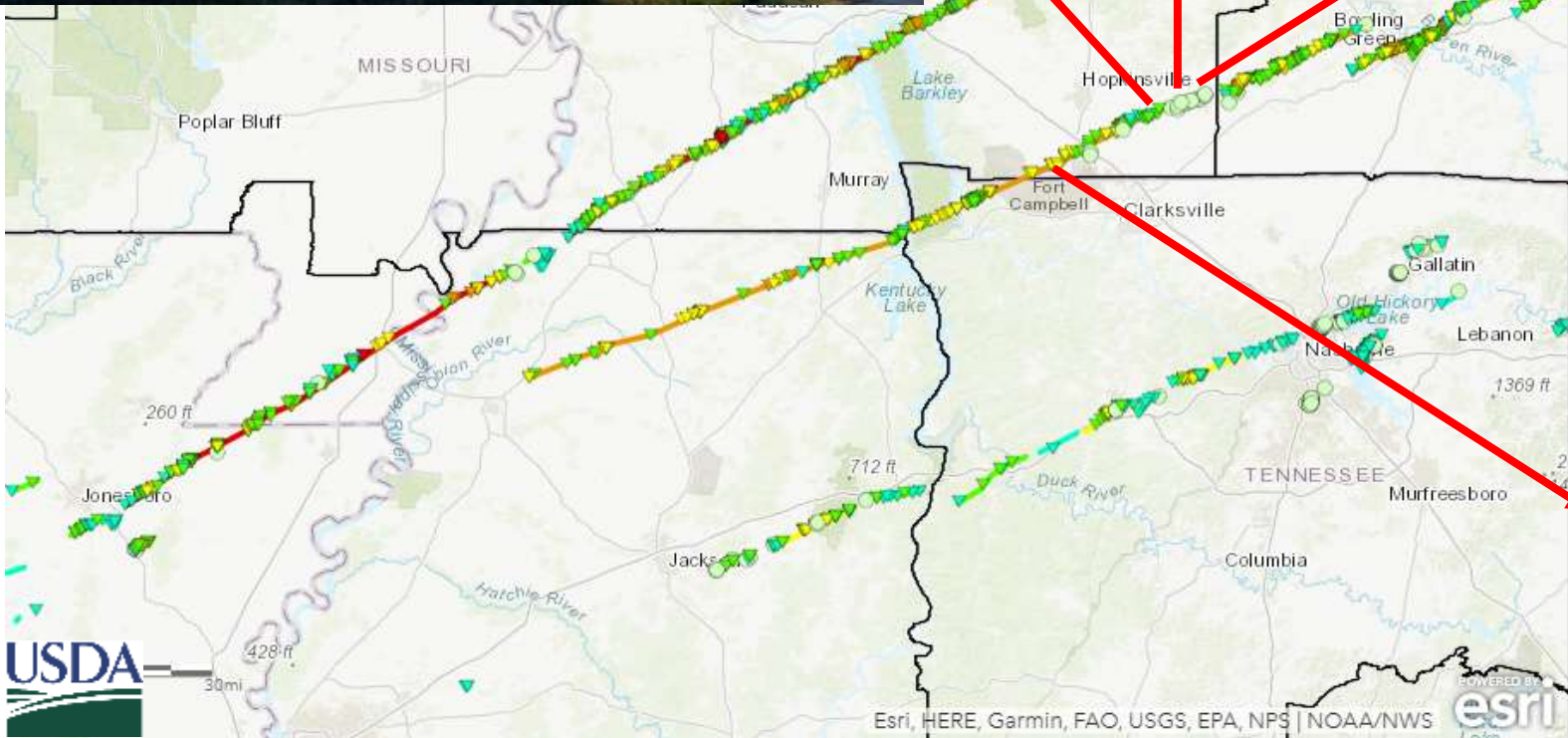
https://services.dat.noaa.gov/arcgis/rest/services/nws_damageassessmenttoolkit/MapServer/0/2602488/attachments/1602703



https://services.dat.noaa.gov/arcgis/rest/services/nws_damageassessmenttoolkit/MapServer/0/2602100/attachments/1602322



https://services.dat.noaa.gov/arcgis/rest/services/nws_damageassessmenttoolkit/MapServer/0/2647807/attachments/1627206



https://services.dat.noaa.gov/arcgis/rest/services/nws_damageassessmenttoolkit/MapServer/0/2600176/attachments/1599924

