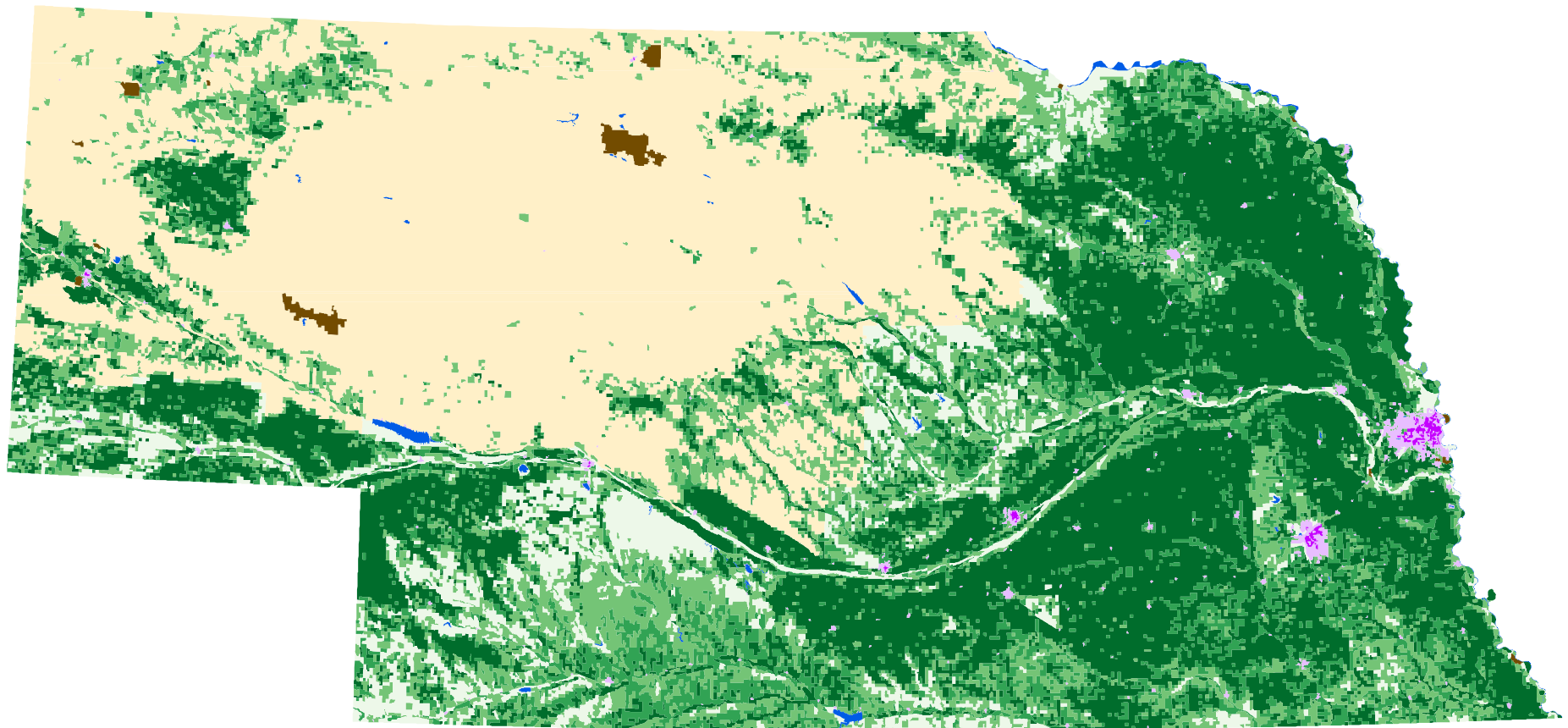











Stratification of Nebraska 2016



Land Use Strata

| | | | |
|--|------------------------------|---|------------------------------|
|  | >75% Cultivated |  | Commercial:>20 Home per SqMi |
|  | 51-75% Cultivated |  | <15% Cultivated |
|  | 15-50% Cultivated |  | <15% Cultivated - Sand Hills |
|  | Agri-Urban:>20 Home per SqMi |  | Non-Agricultural |
| | |  | Water |

Projection: UTM zone 14

Prepared by GEOSSS

