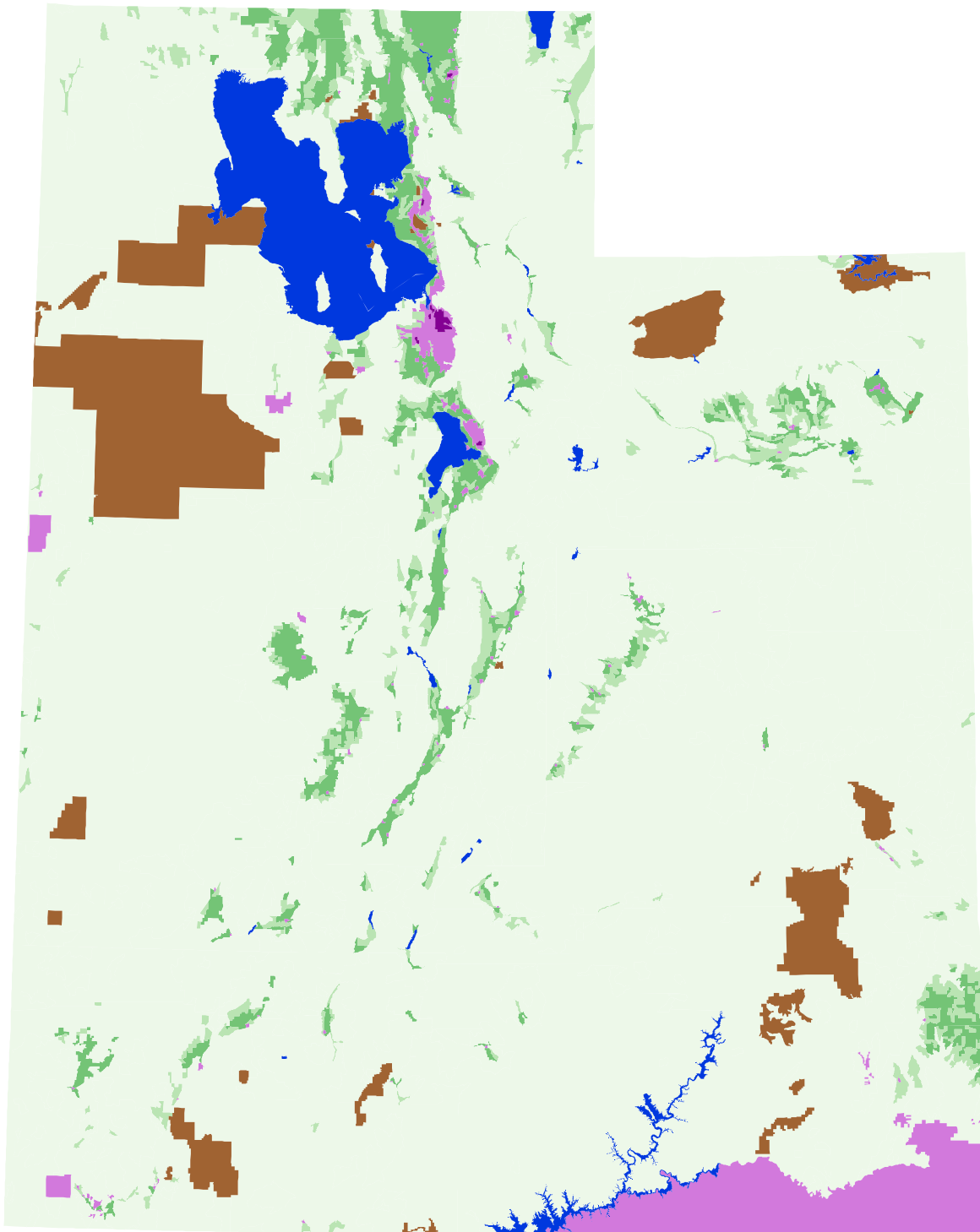

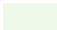







# Stratification of Utah 1988



## Land Use Strata

 >50% Cultivated	 <15% Cultivated
 15-50% Cultivated	 Non-Agricultural
 Agri-Urban: >20 homes/sq. mi.; 48	 Water
 Commercial: >20 homes/sq. mi.	

Unprojected, Geographic Coordinates



Prepared by Geospatial Science and Survey Section, 2014