

WHY IS THE CENSUS OF AGRICULTURE IMPORTANT TO YOU?



THE CENSUS OF AGRICULTURE IMPACTS THE FUTURE OF YOUR OPERATION, COMMUNITY, AND INDUSTRY.

USDA's National Agricultural Statistics Service (NASS) sends a census questionnaire to every known producer in the country.

Producers benefit with new and improved farm programs and services tailored to their region and needs. They also benefit by having accurate data to help make production and marketing decisions for their operations.

Producers, businesses, and many others use the data to make informed decisions such as where to locate processing or transportation facilities.

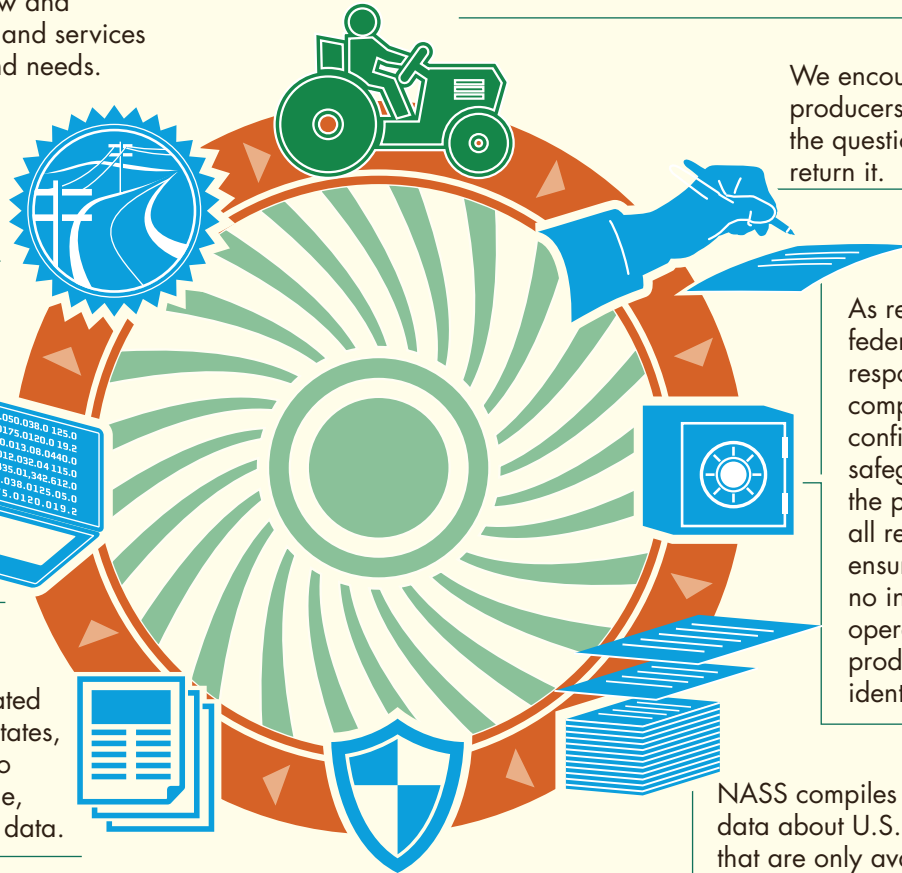
NASS publishes aggregated census data for all U.S. states, counties, and territories to everyone at the same time, ensuring equal access to data.

Data are kept secure and each NASS employee is committed to data security by following mandated procedures to ensure information is not compromised.

We encourage all producers to complete the questionnaire and return it.

As required by federal law, all responses are completely confidential. NASS safeguards the privacy of all respondents, ensuring that no individual operation or producer can be identified.

NASS compiles and analyzes data about U.S. farming that are only available as part of the census such as demographics, economics, and land use.



Census of Agriculture data work for you by improving decisions about jobs, transportation, production practices, new technologies, marketing opportunities, farm services and programs, local, state, and federal policy, and more. For these reasons, it is important to respond to the ag census.



www.nass.usda.gov/AgCensus
United States Department of Agriculture
National Agricultural Statistics Service

CENSUS OF AGRICULTURE