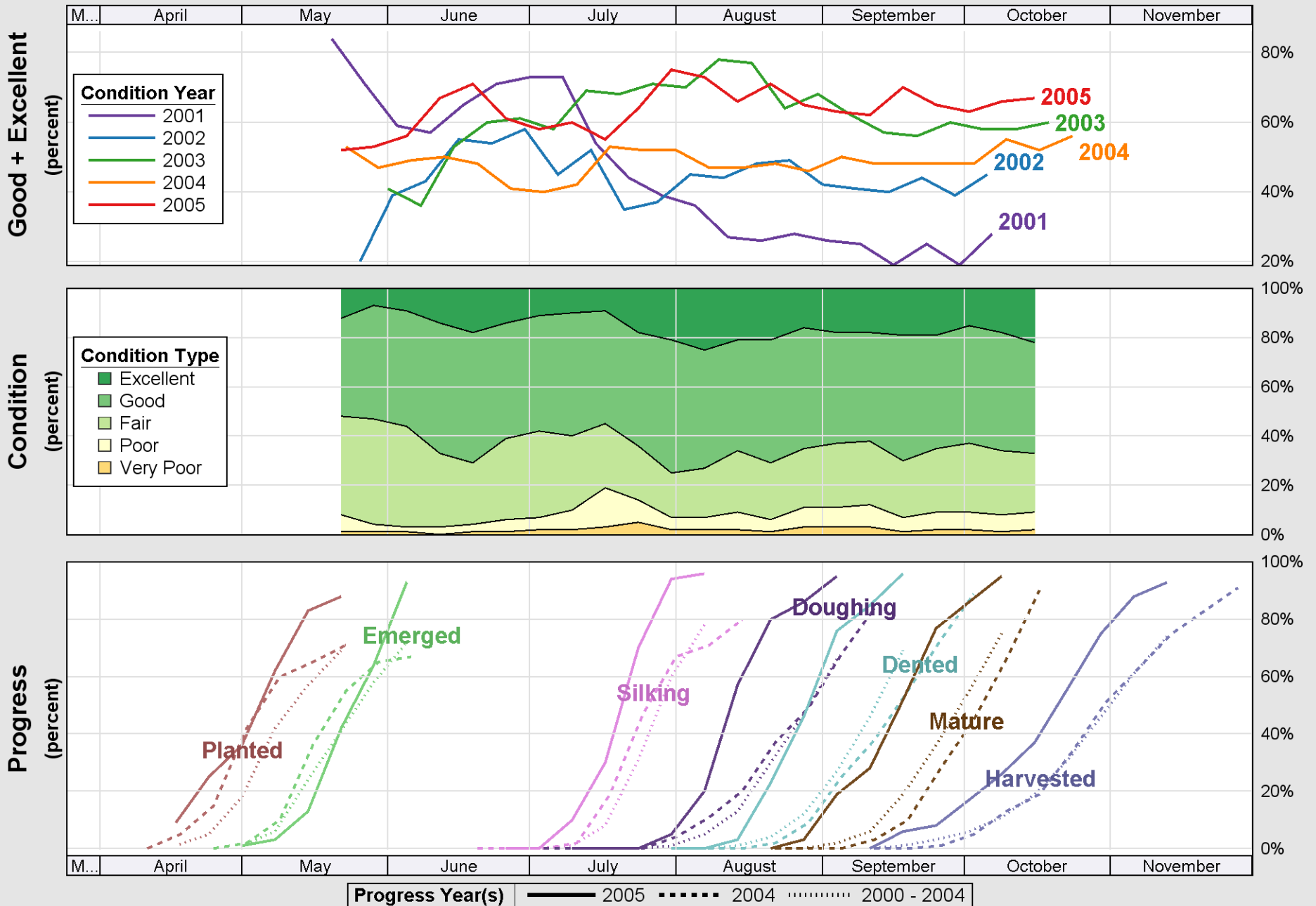
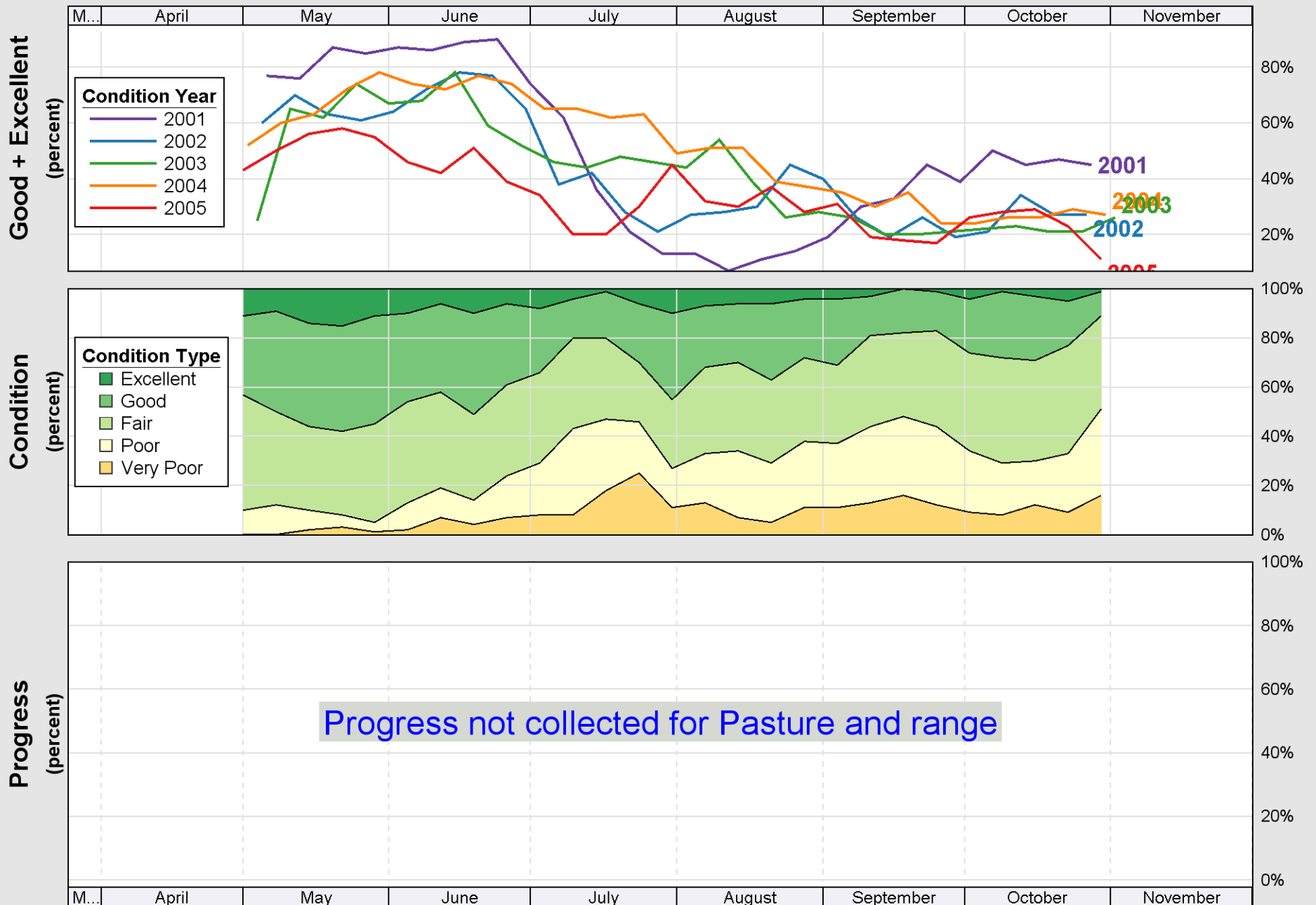


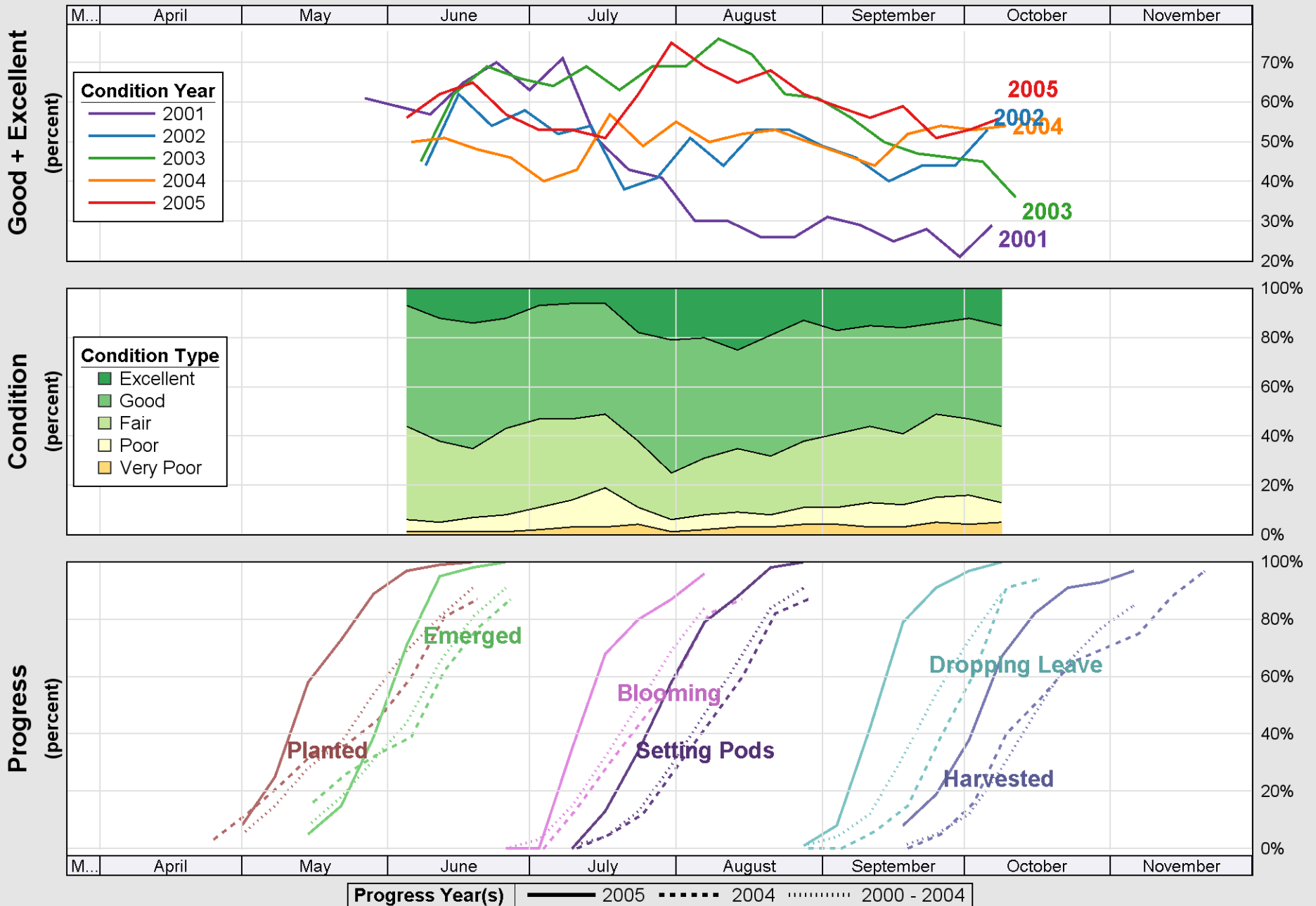
Crop Progress and Condition: Corn in Michigan , 2005



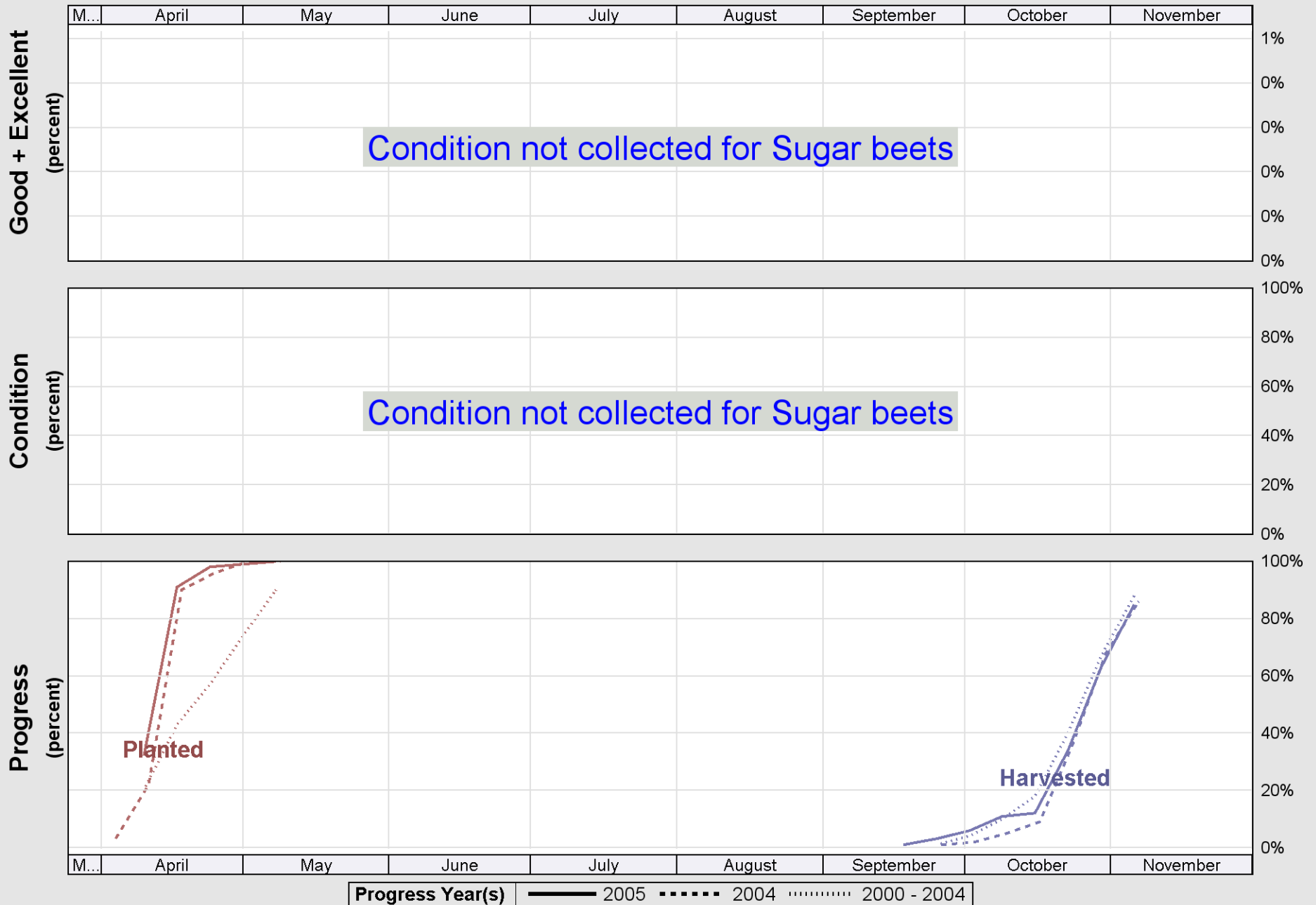
Source: National Agricultural Statistics Service (NASS), Crop Progress Report



Source: National Agricultural Statistics Service (NASS), Crop Progress Report

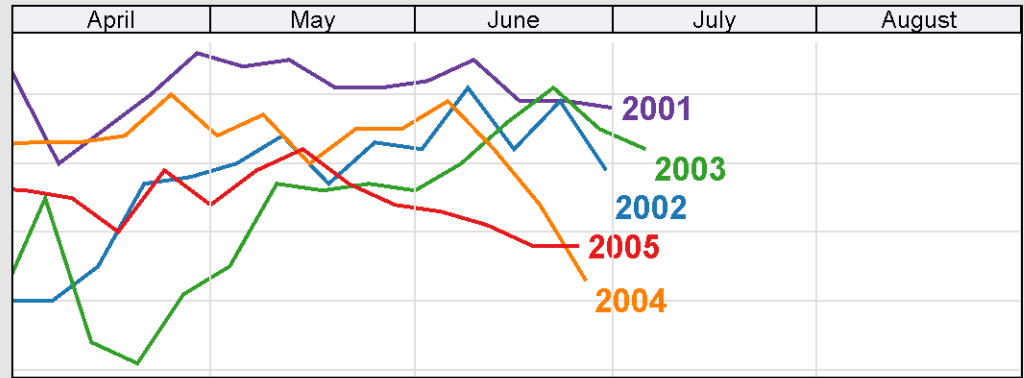
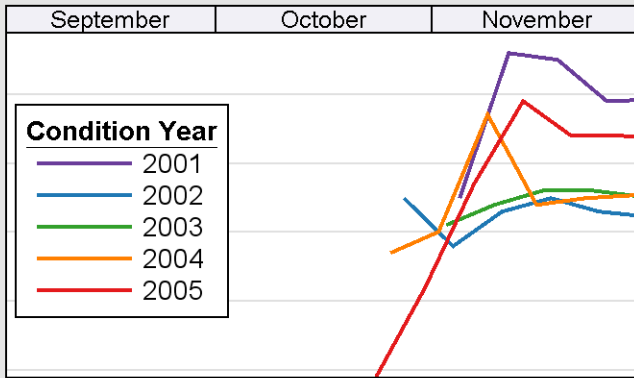


Source: National Agricultural Statistics Service (NASS), Crop Progress Report

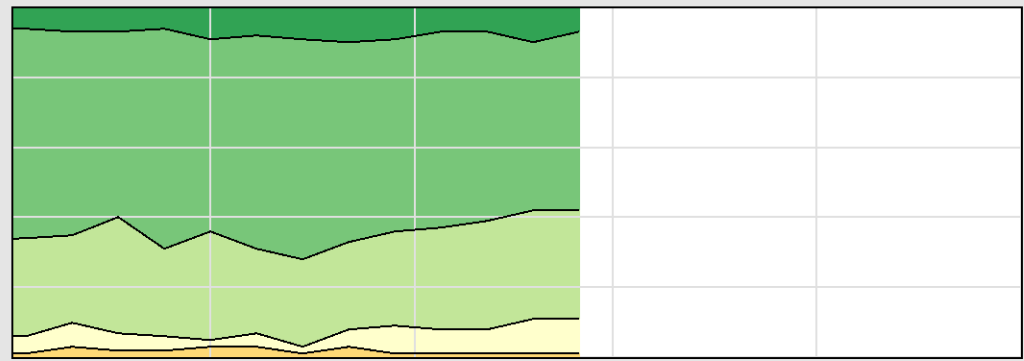
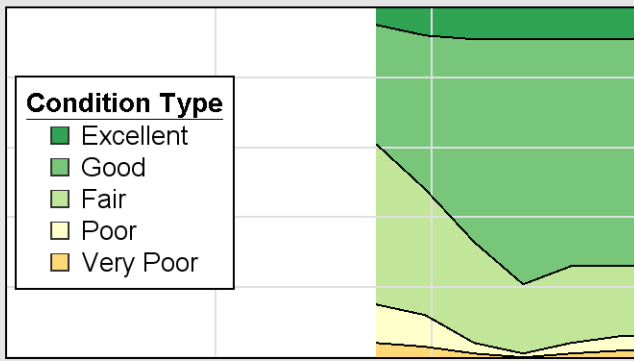


Source: National Agricultural Statistics Service (NASS), Crop Progress Report

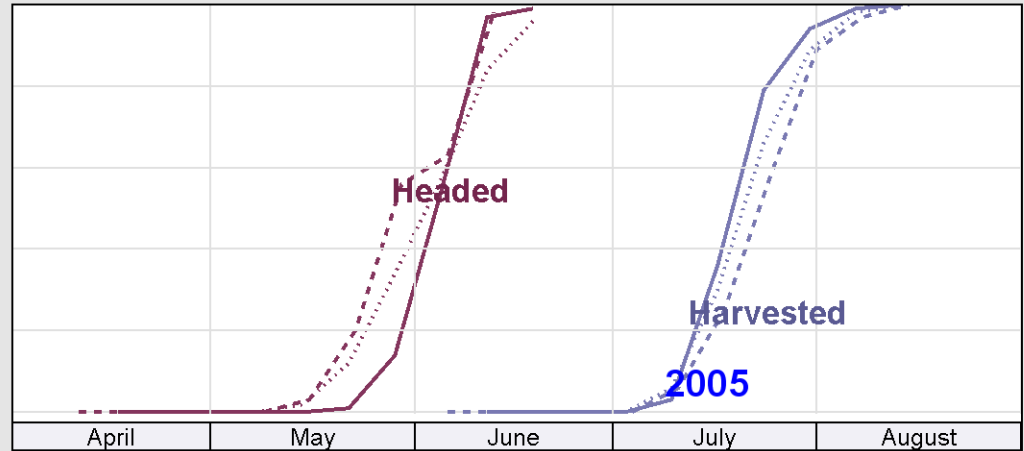
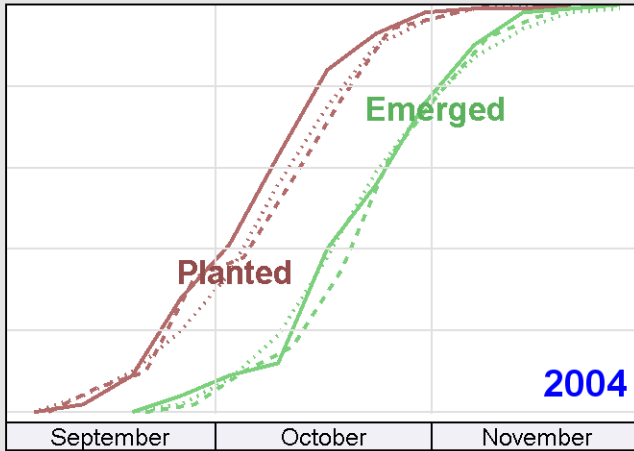
Good + Excellent
(percent)



Condition
(percent)



Progress
(percent)



Progress Year(s) ——— 2005 ····· 2004 ······ 2000 - 2004