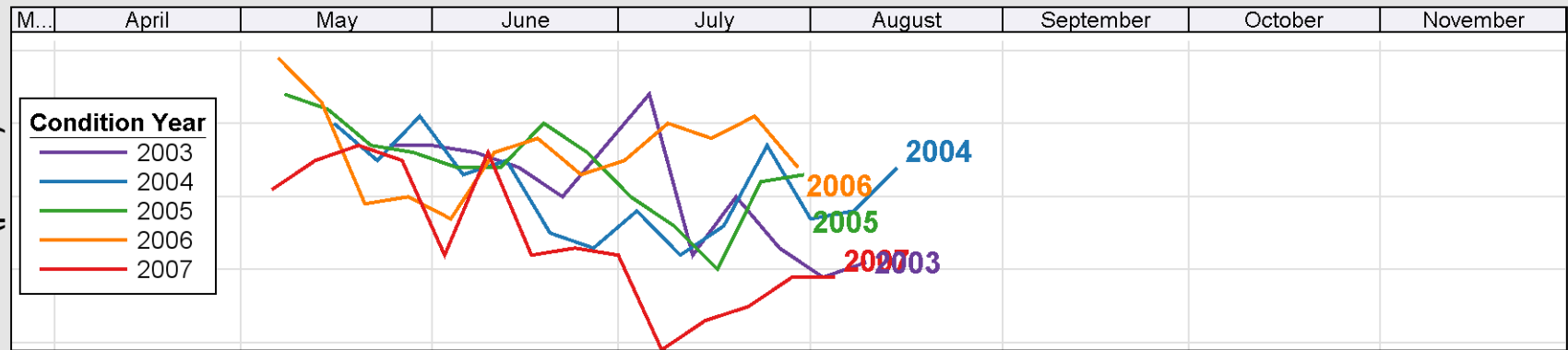
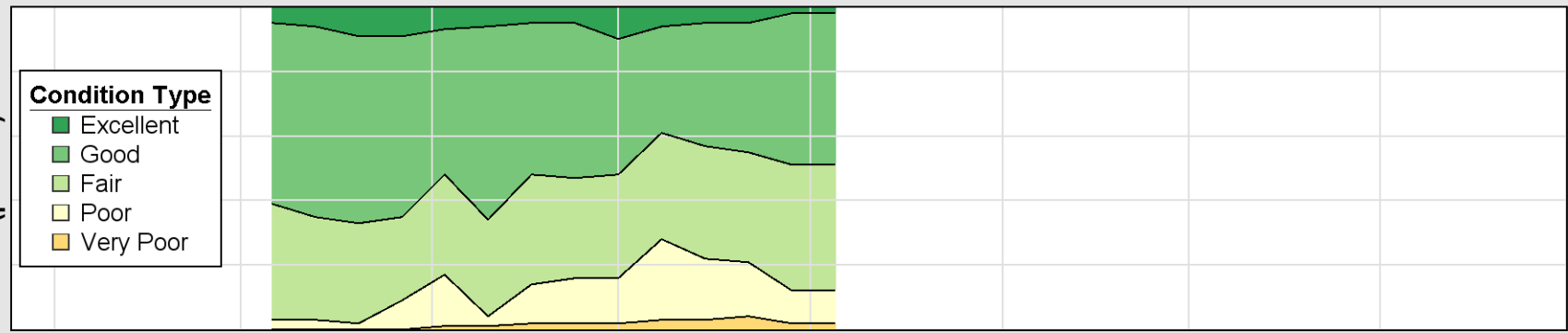


Source: National Agricultural Statistics Service (NASS), Crop Progress Report

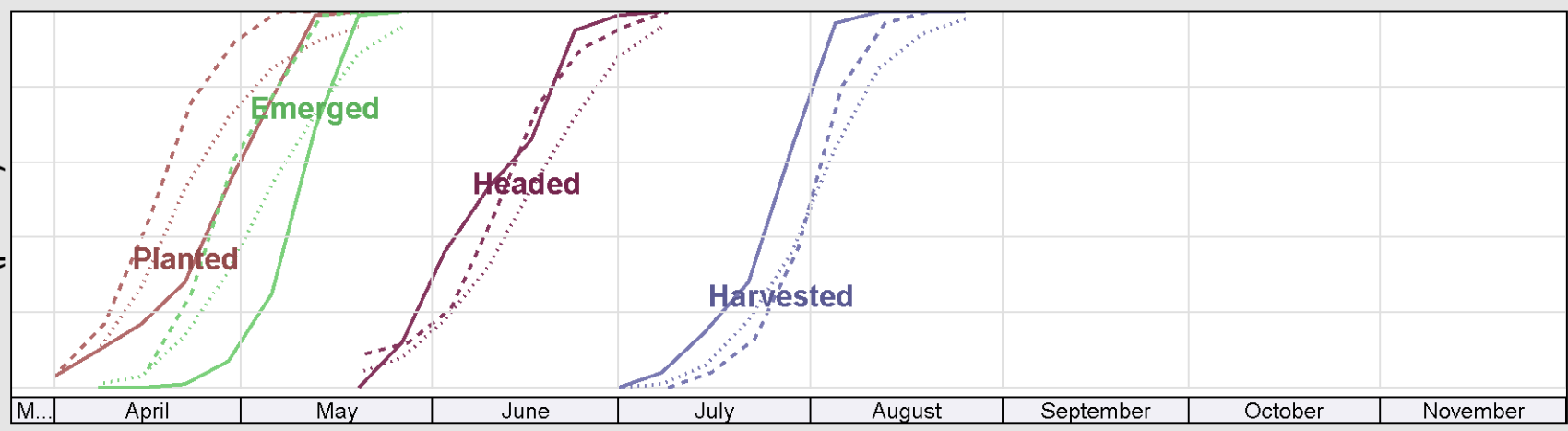
Good + Excellent
(percent)



Condition
(percent)

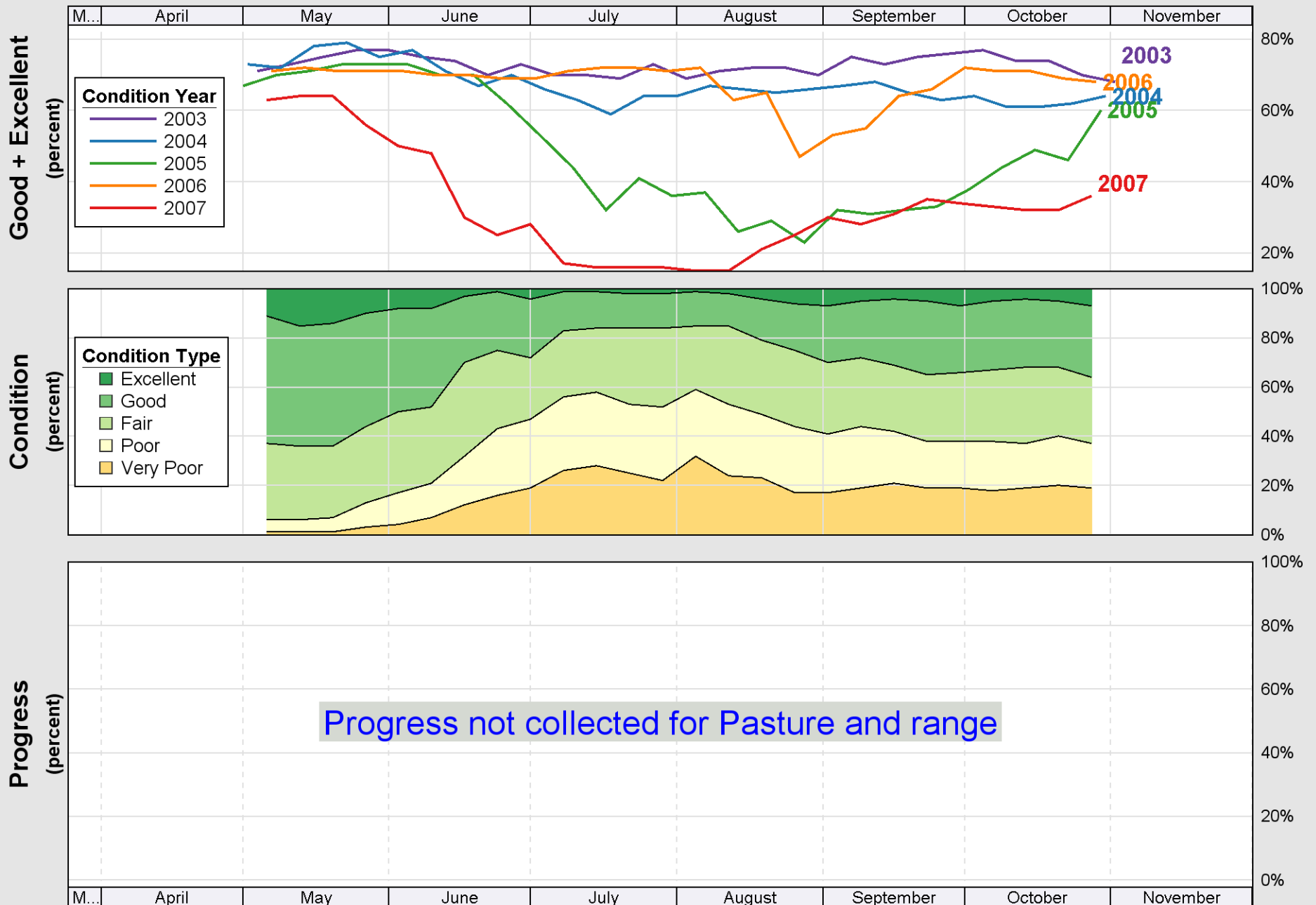


Progress
(percent)

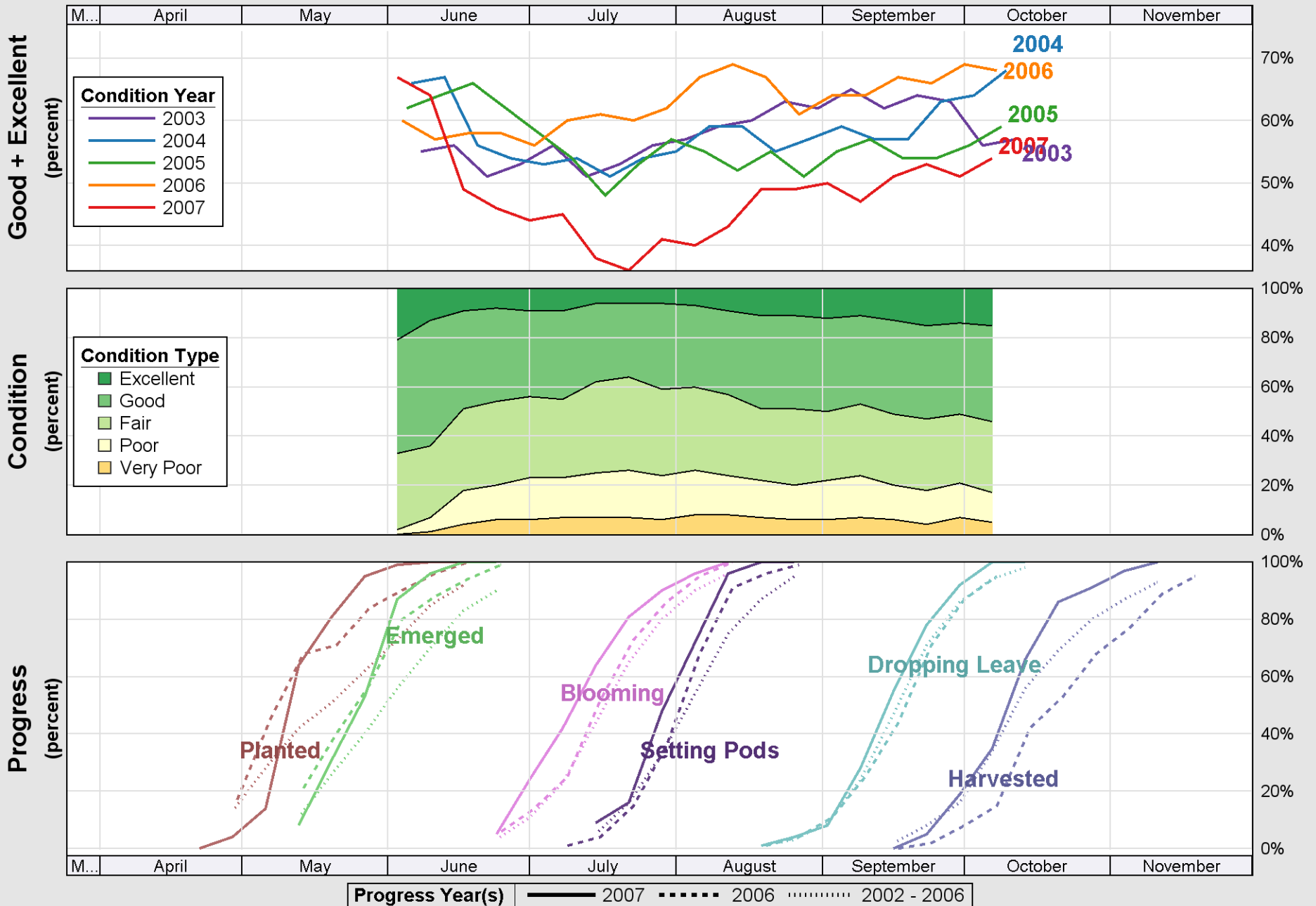


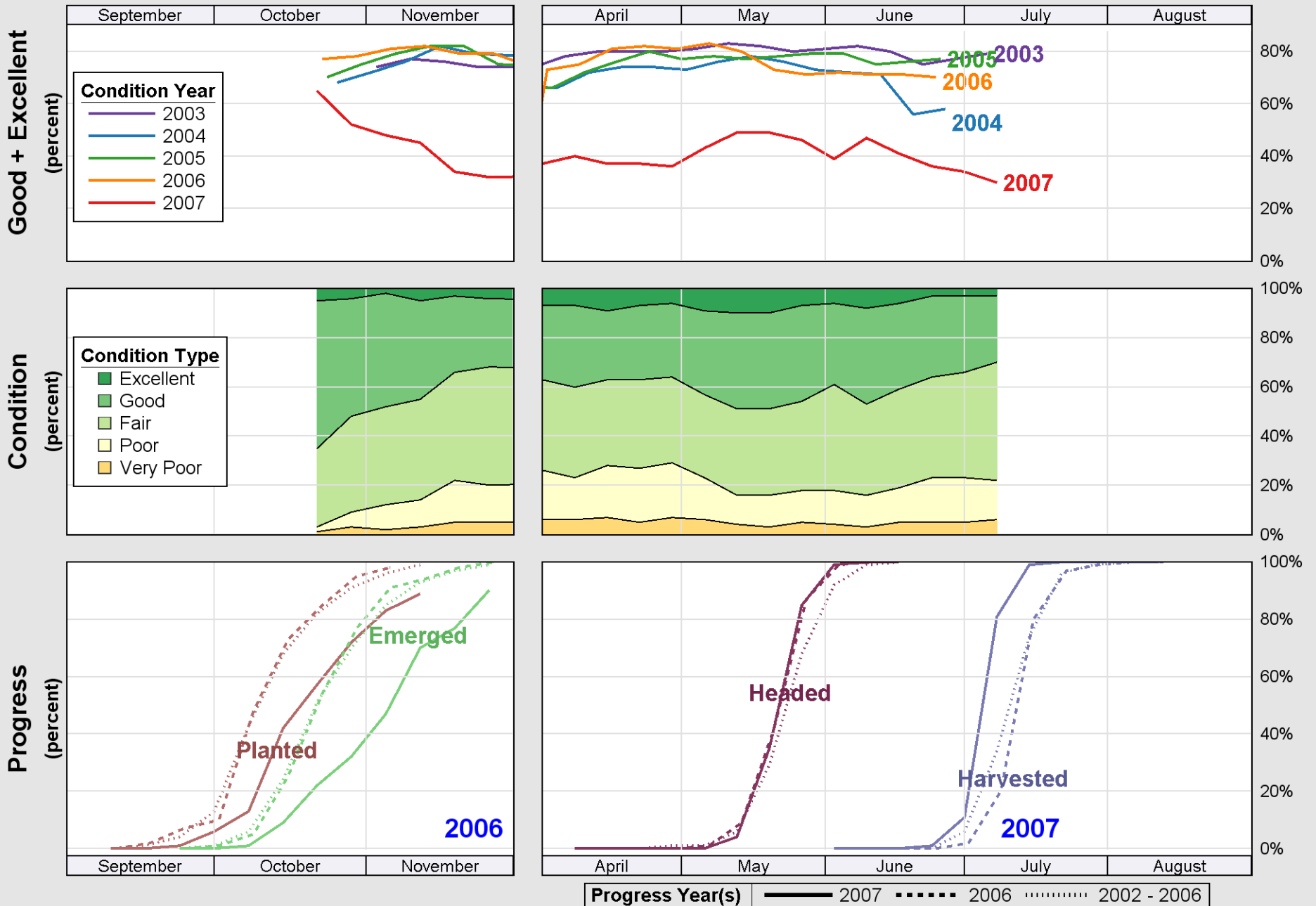
Progress Year(s) ——— 2007 - - - - - 2006 2002 - 2006

Crop Progress and Condition: Pasture and range in Ohio , 2007



Source: National Agricultural Statistics Service (NASS), Crop Progress Report





Source: National Agricultural Statistics Service (NASS), Crop Progress Report