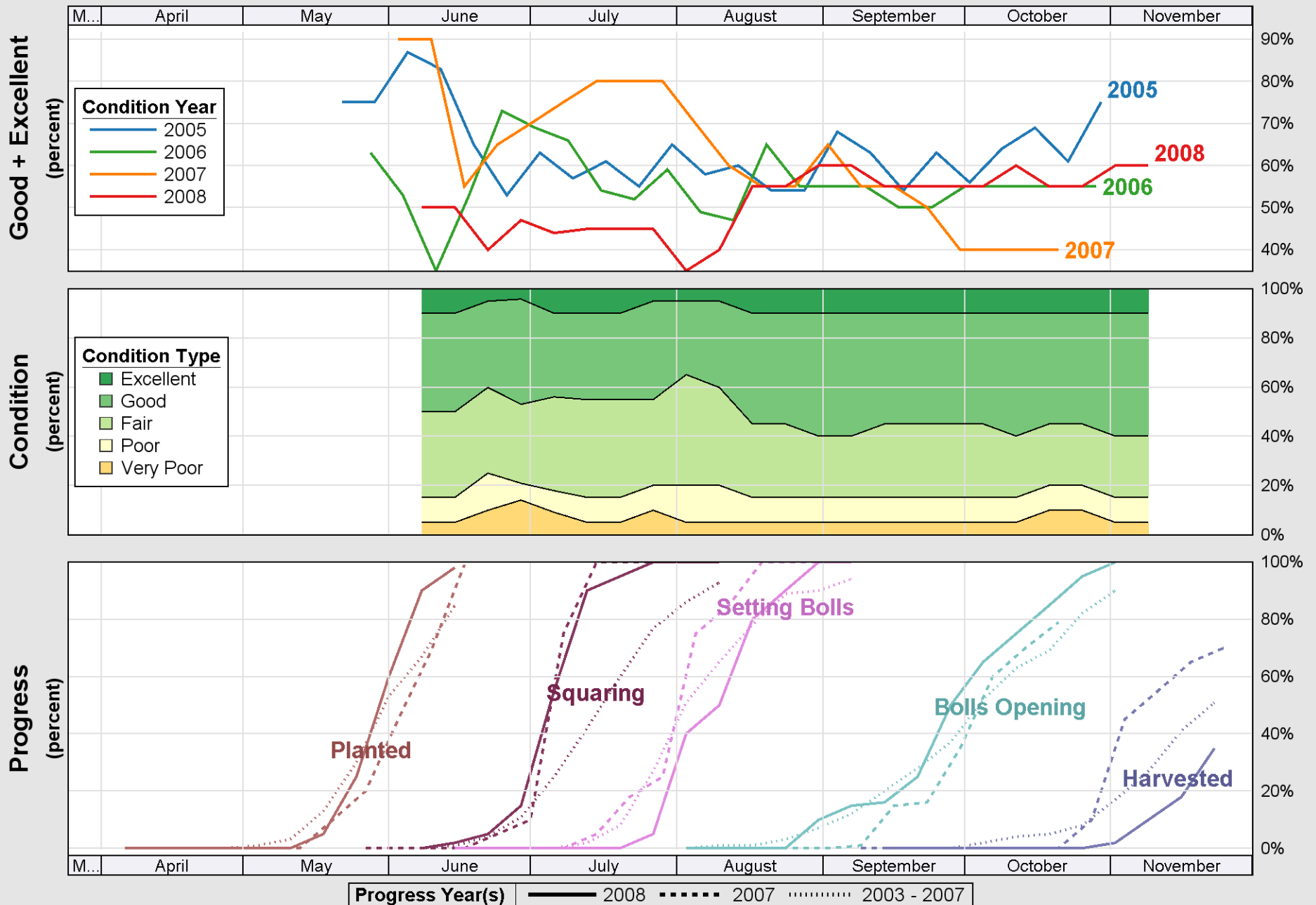
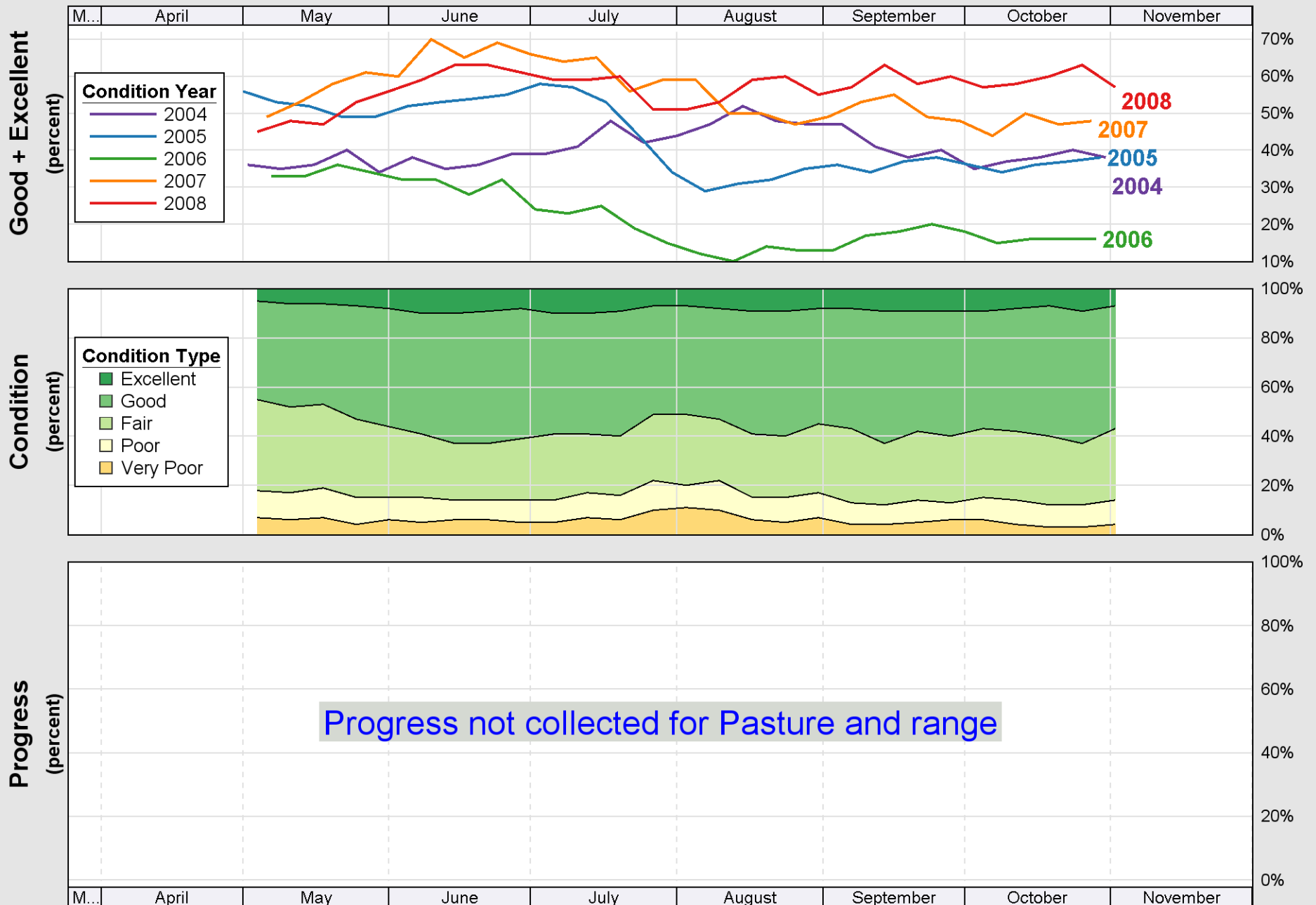
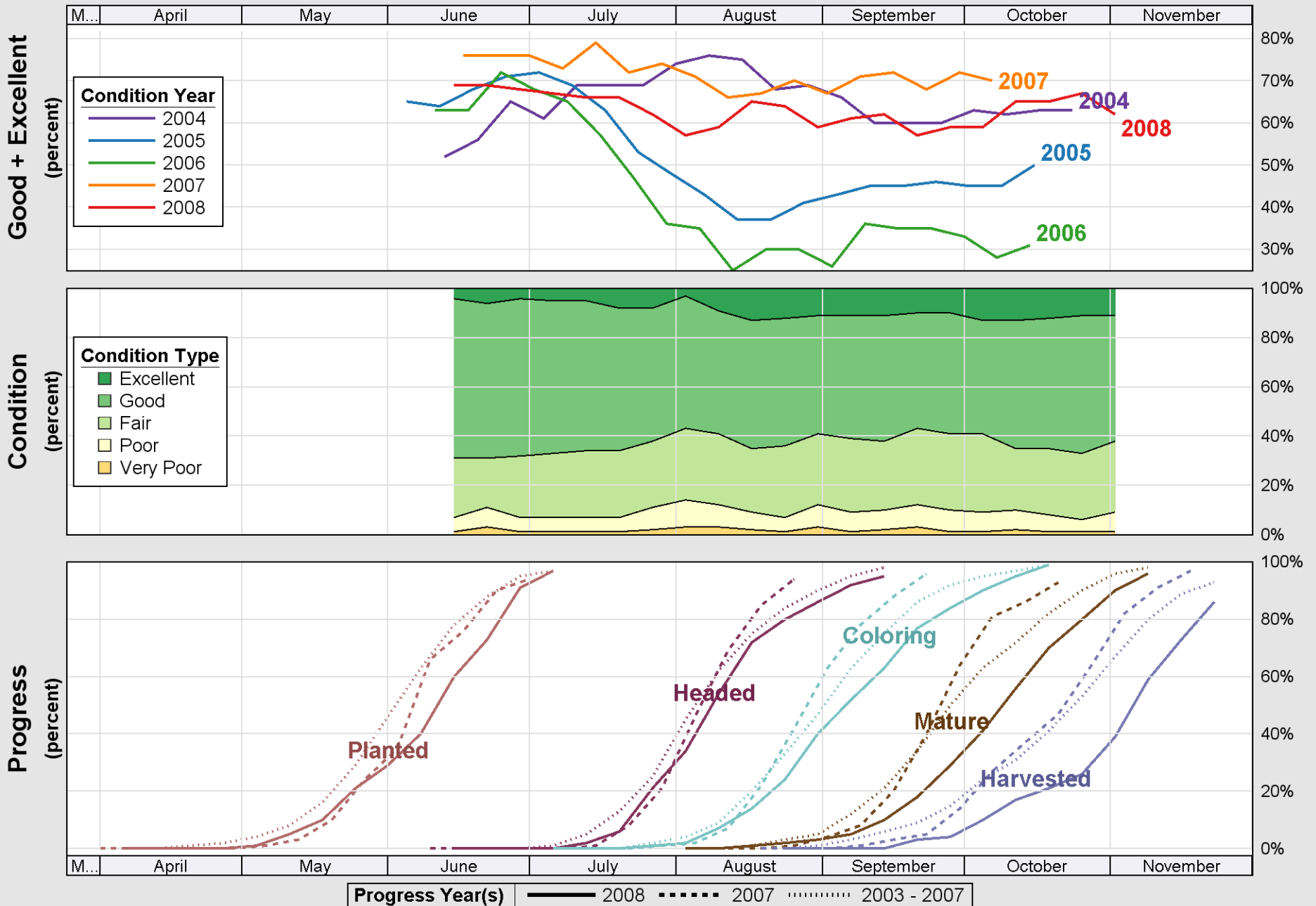


Source: National Agricultural Statistics Service (NASS), Crop Progress Report

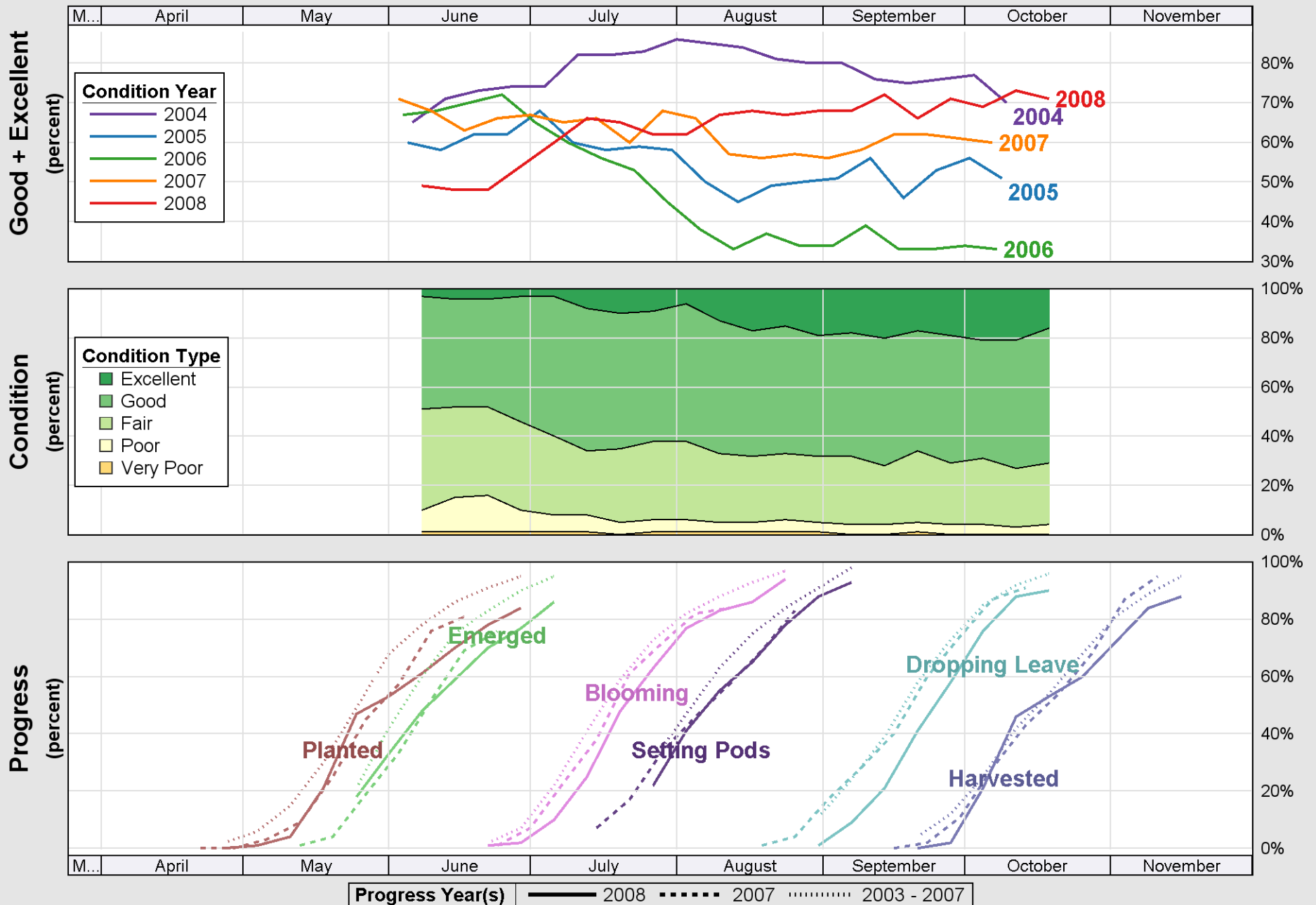


Source: National Agricultural Statistics Service (NASS), Crop Progress Report

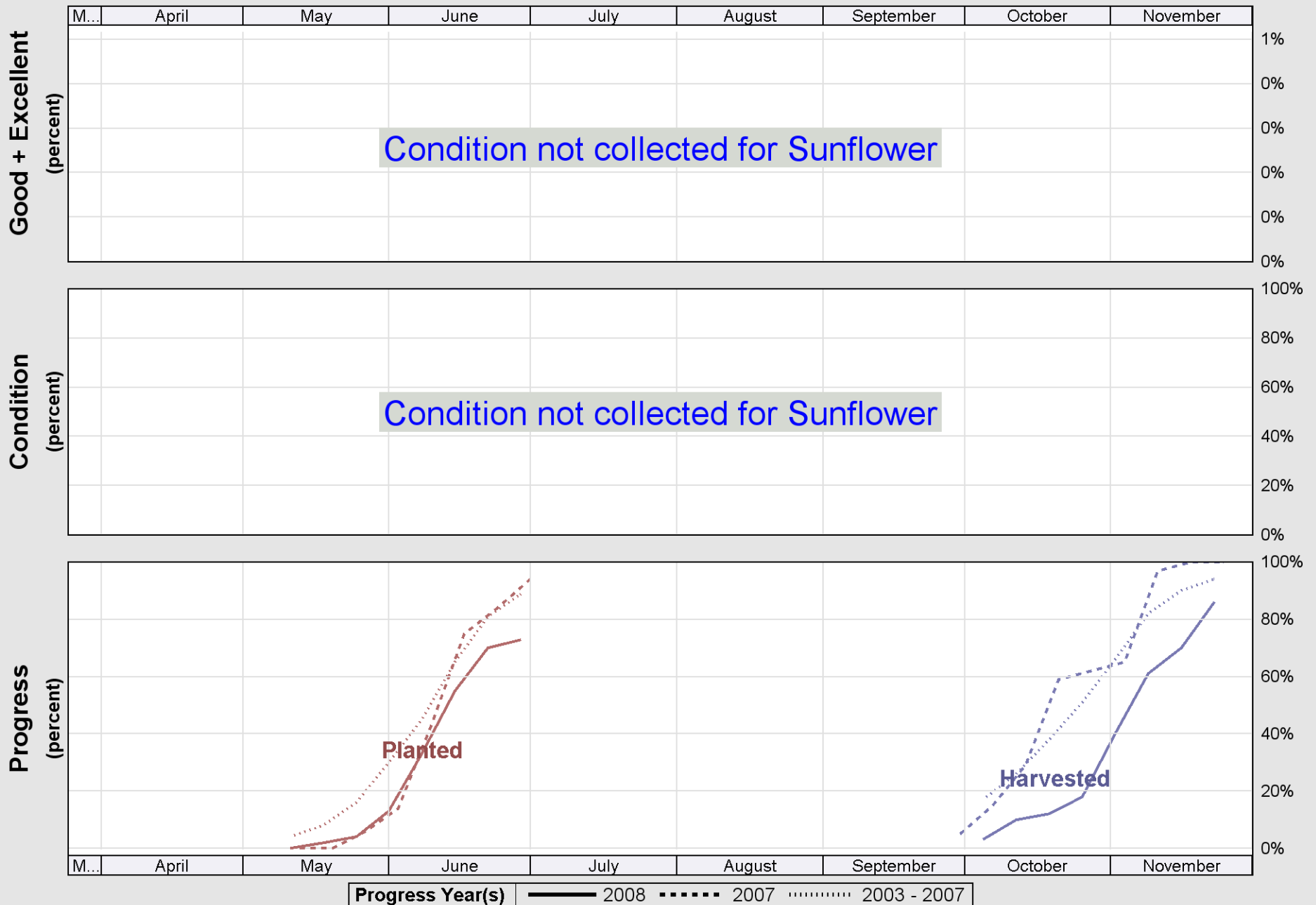




Source: National Agricultural Statistics Service (NASS), Crop Progress Report



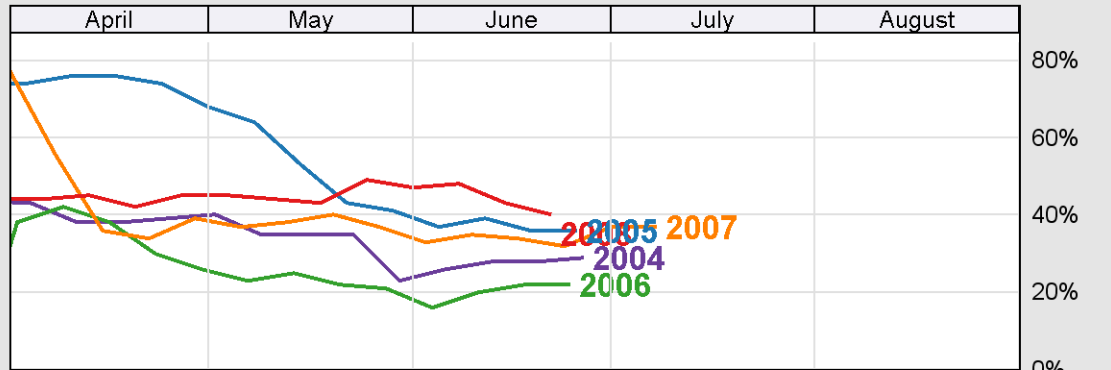
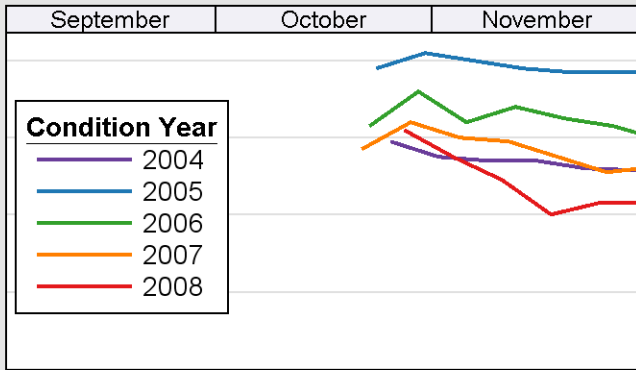
Source: National Agricultural Statistics Service (NASS), Crop Progress Report



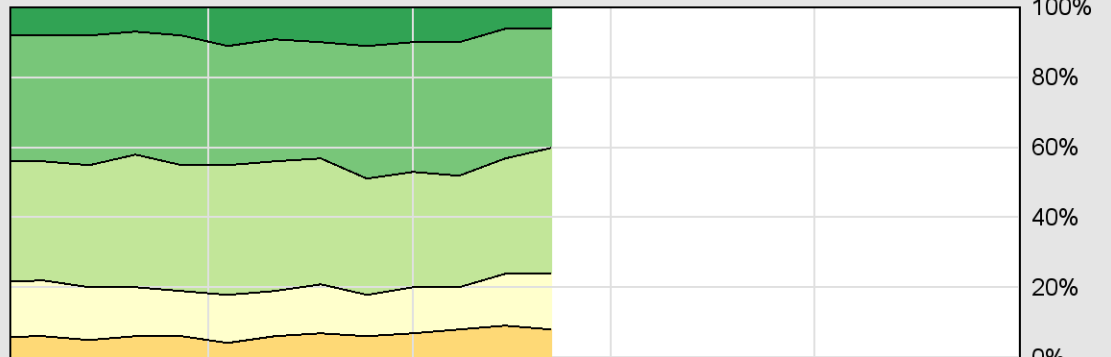
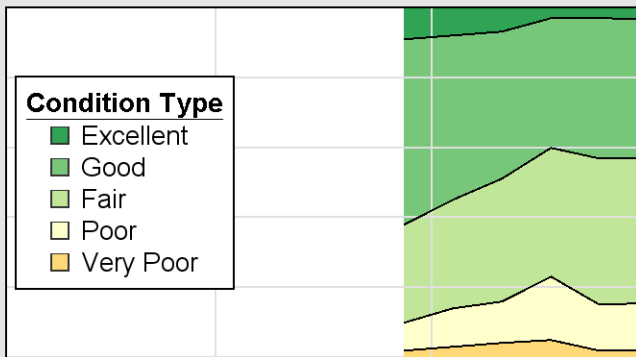
Source: National Agricultural Statistics Service (NASS), Crop Progress Report

# Crop Progress and Condition: Winter wheat in Kansas , 2008

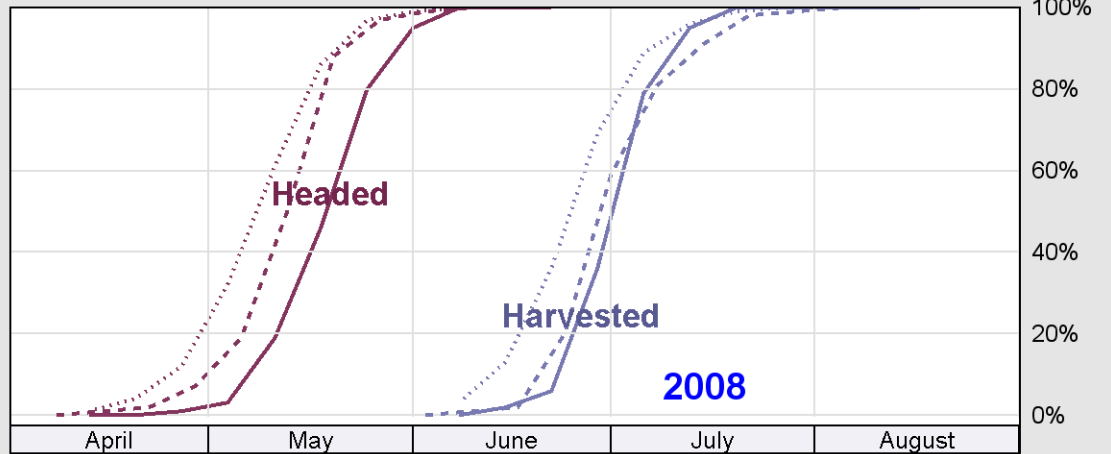
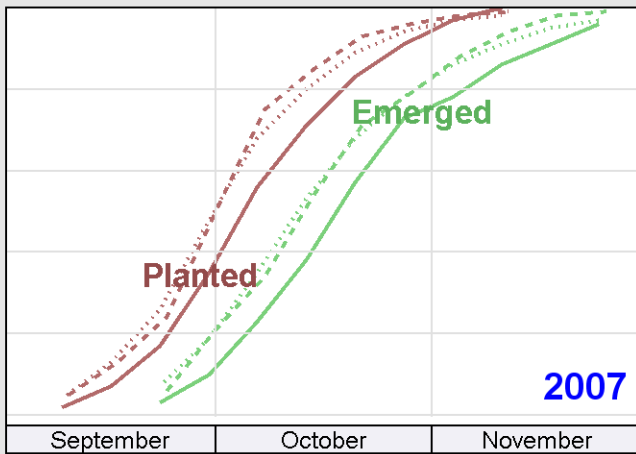
Good + Excellent  
(percent)



Condition  
(percent)



Progress  
(percent)



**Progress Year(s)** ——— 2008    ····· 2007    - - - - - 2003 - 2007