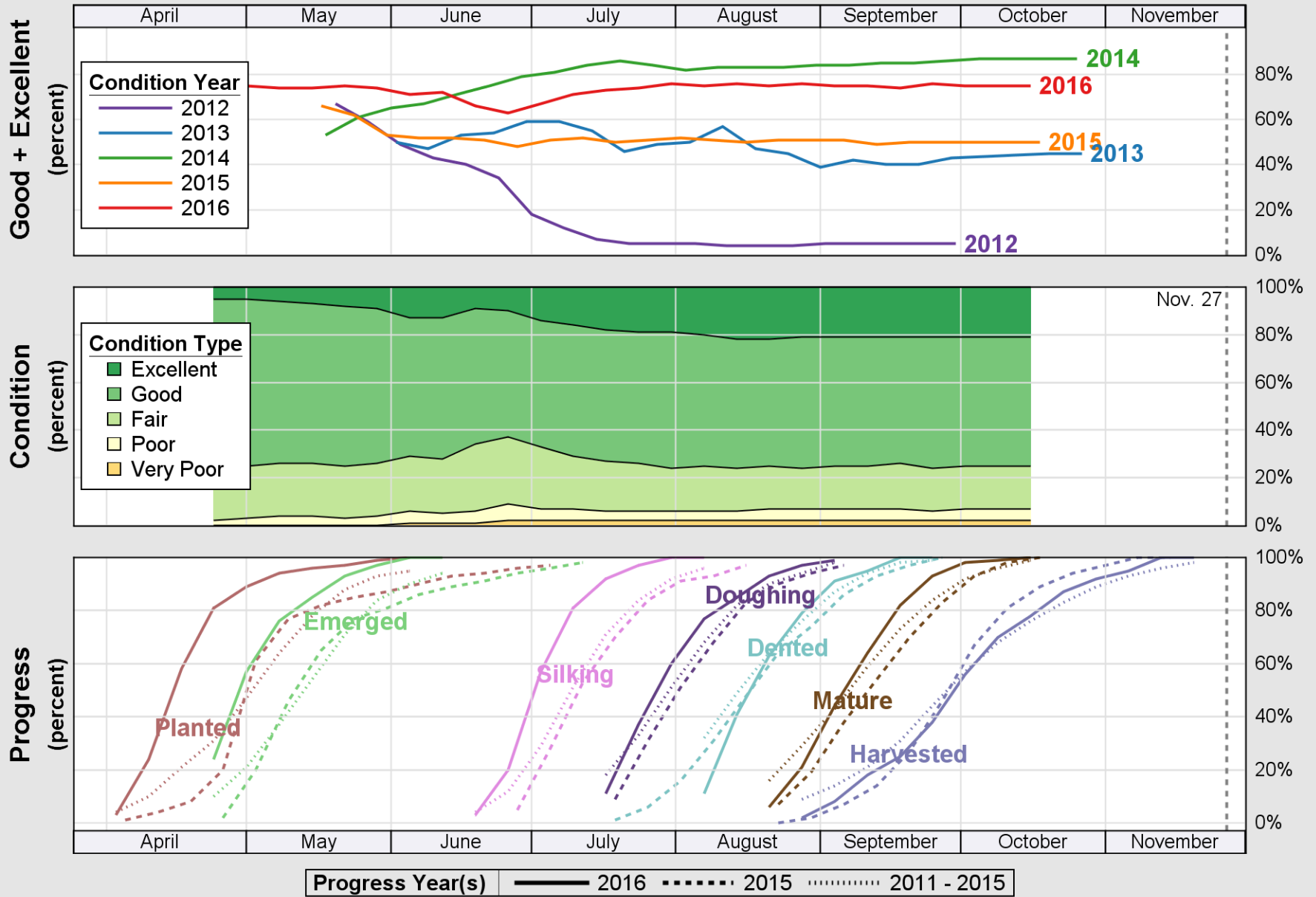


USDA

Crop Progress and Condition: Corn in Missouri , 2016

NASS

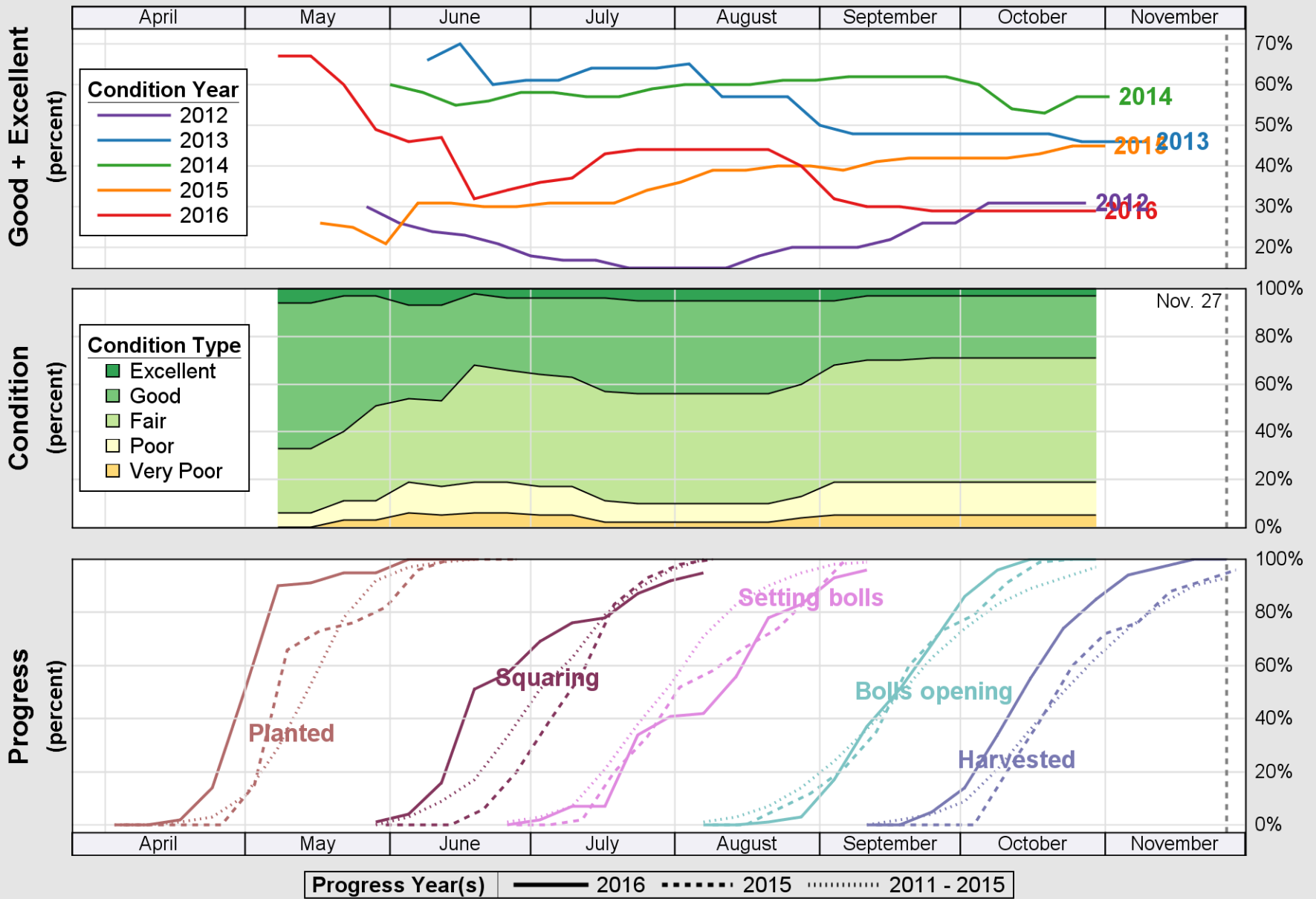


Source: National Agricultural Statistics Service (NASS), Crop Progress Report

USDA

Crop Progress and Condition: Cotton in Missouri, 2016

NASS

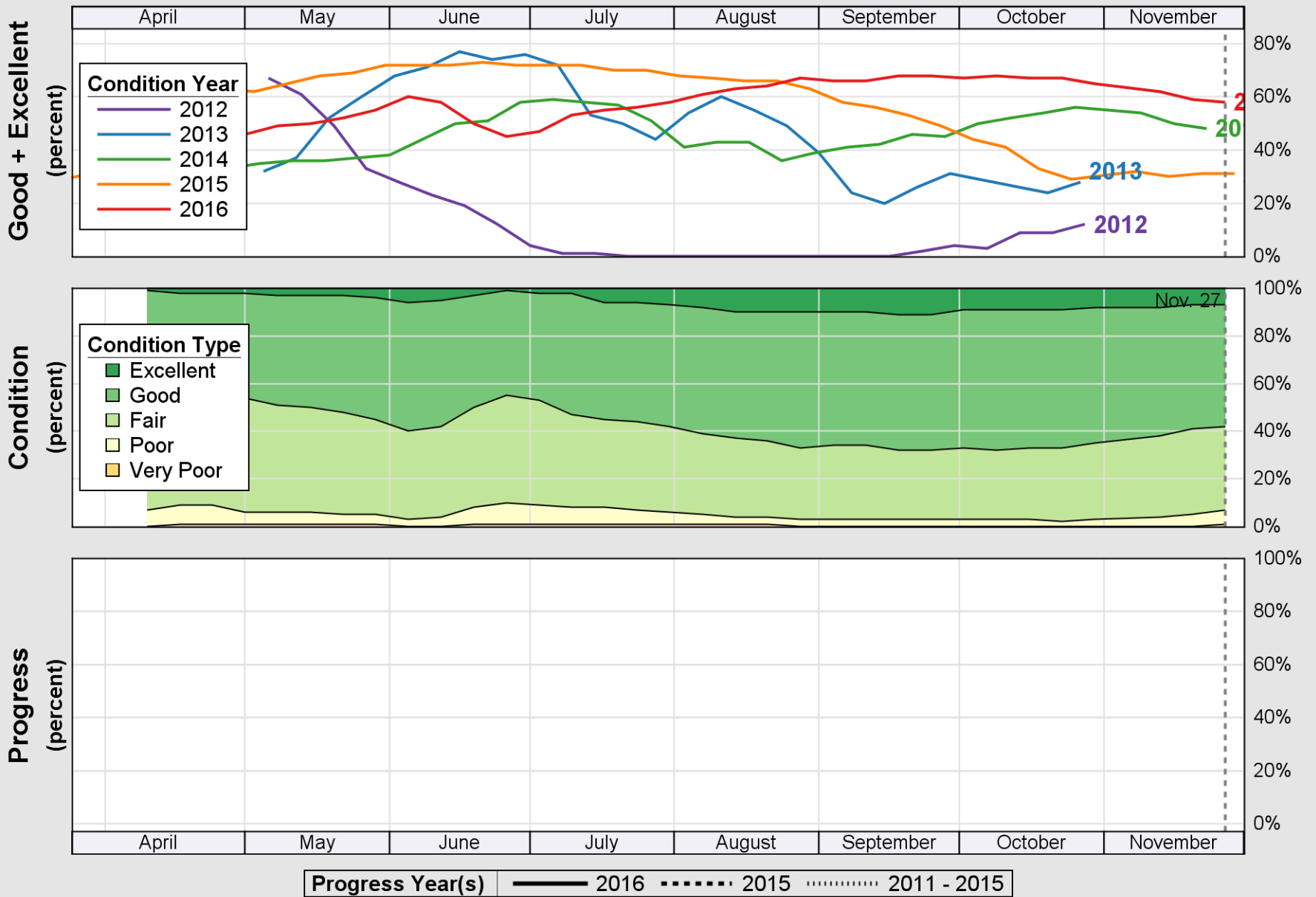


Source: National Agricultural Statistics Service (NASS), Crop Progress Report

USDA

Crop Progress and Condition: Pasture and Range in Missouri , 2016

NASS

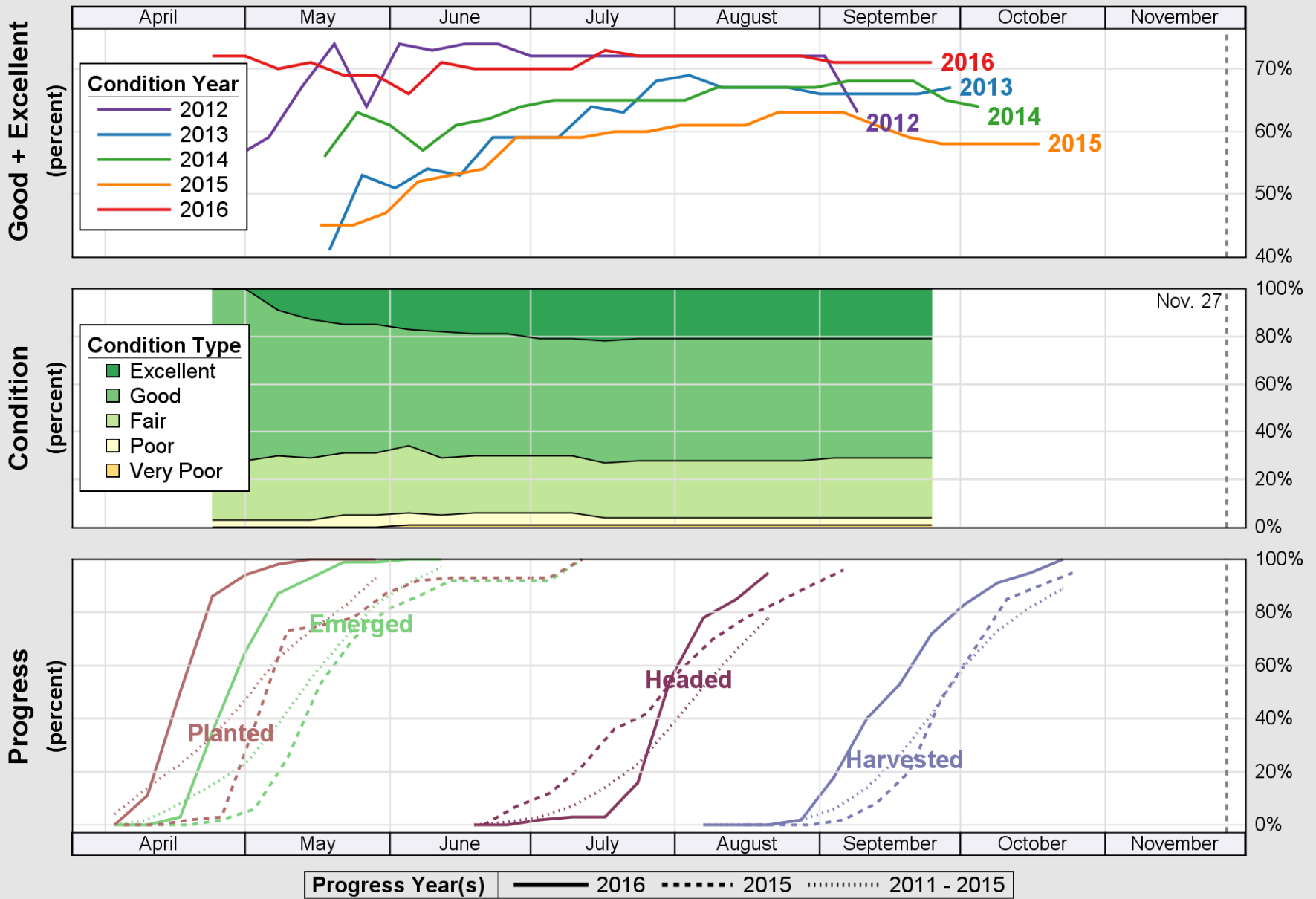


Source: National Agricultural Statistics Service (NASS), Crop Progress Report

USDA

Crop Progress and Condition: Rice in Missouri , 2016

NASS

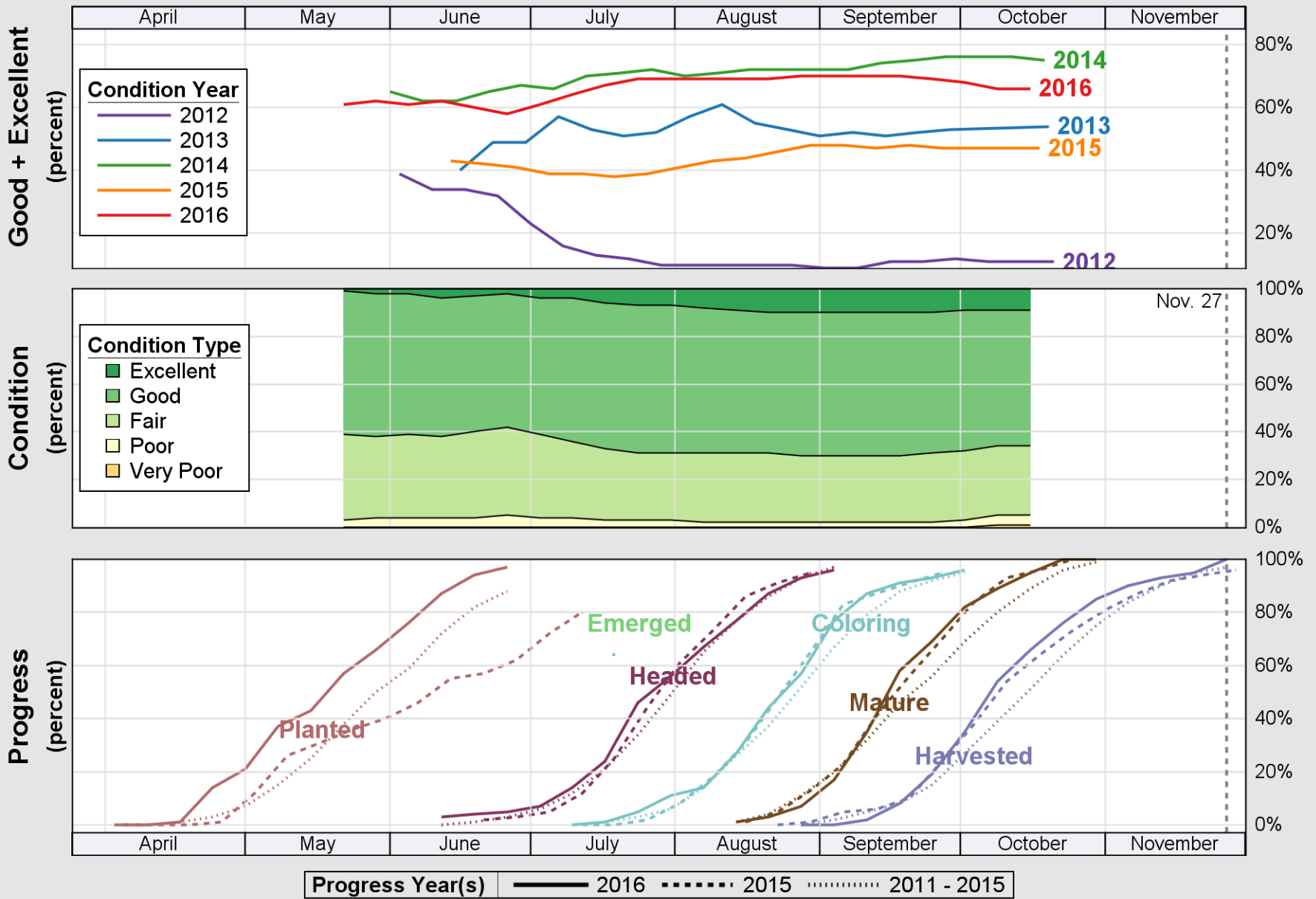


Source: National Agricultural Statistics Service (NASS), Crop Progress Report

USDA

Crop Progress and Condition: Sorghum in Missouri, 2016

NASS

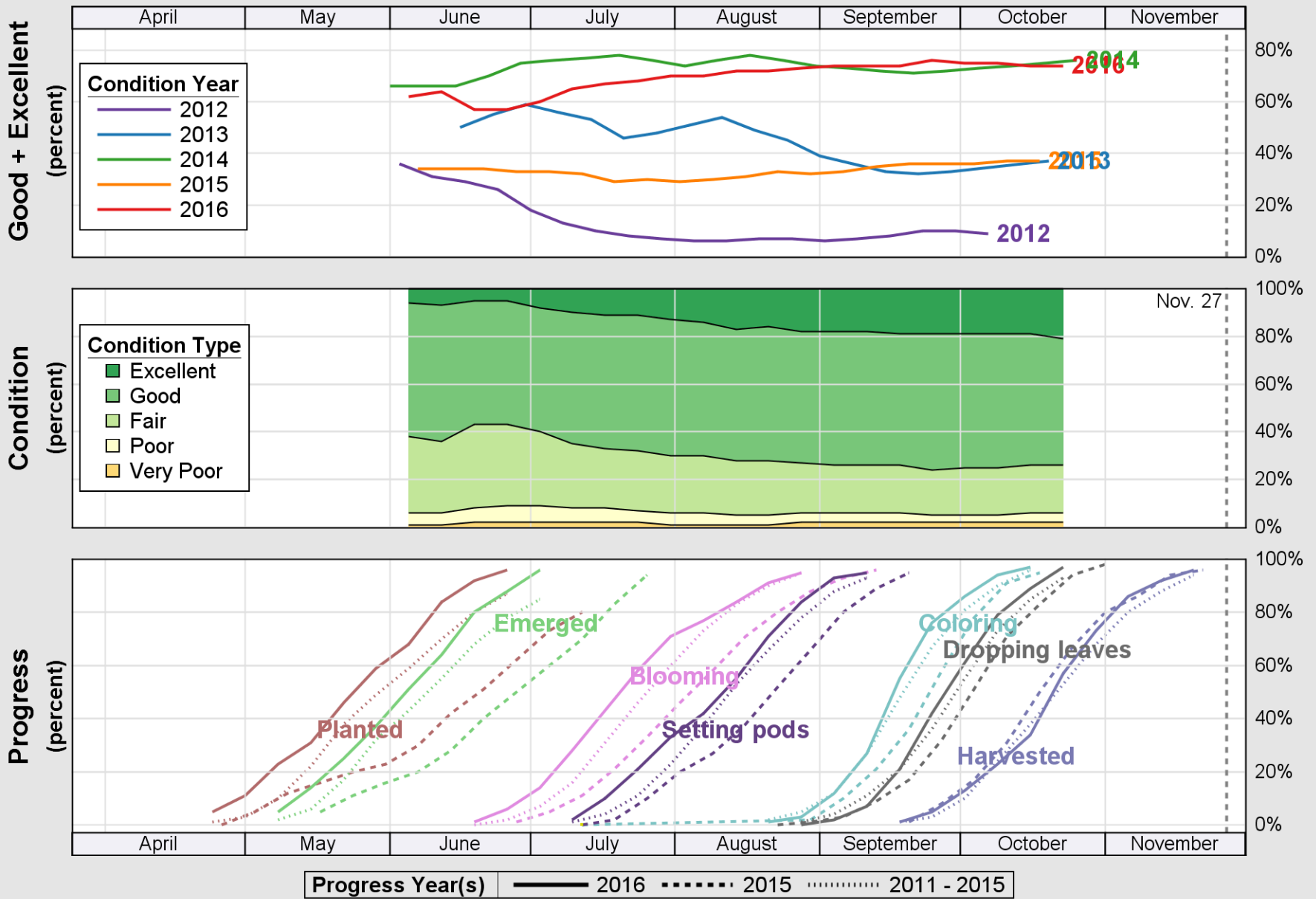


Source: National Agricultural Statistics Service (NASS), Crop Progress Report

USDA

Crop Progress and Condition: Soybeans in Missouri , 2016

NASS

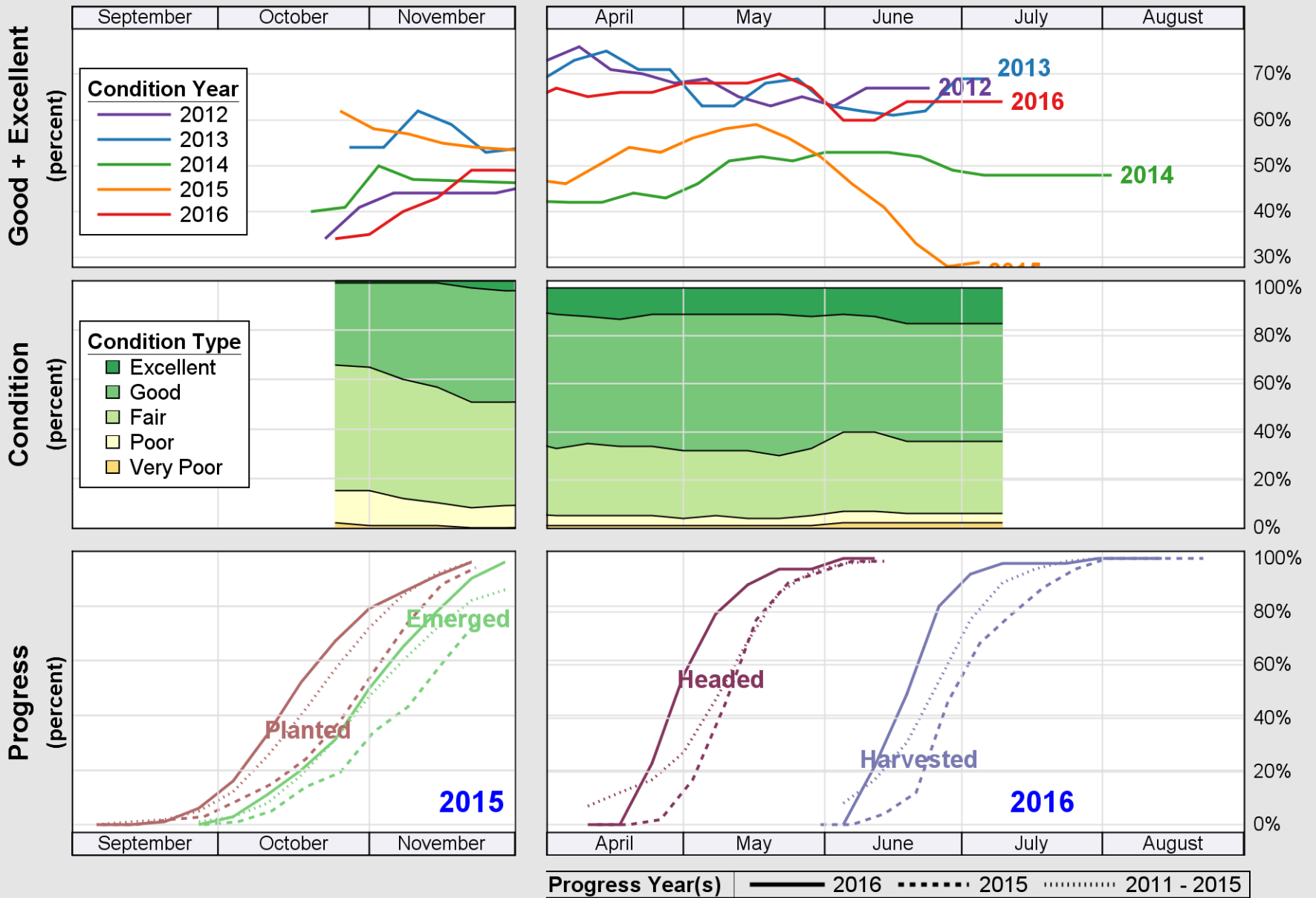


Source: National Agricultural Statistics Service (NASS), Crop Progress Report

USDA

Crop Progress and Condition: Winter Wheat in Missouri, 2016

NASS



Source: National Agricultural Statistics Service (NASS), Crop Progress Report