



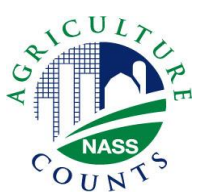
United States Department of Agriculture
National Agricultural Statistics Service



SEPTEMBER CROP PRODUCTION
Executive Summary

September 12, 2011

8:30 AM



Contents

Field Crops	Fruits/Nuts	Specialty Crops
Corn	Navel Oranges	Tobacco
Soybeans	Hazelnuts	Sugarbeets
Cotton	Walnuts	Sugarcane
Rice		Summer Potatoes
Peanuts		
Sorghum		



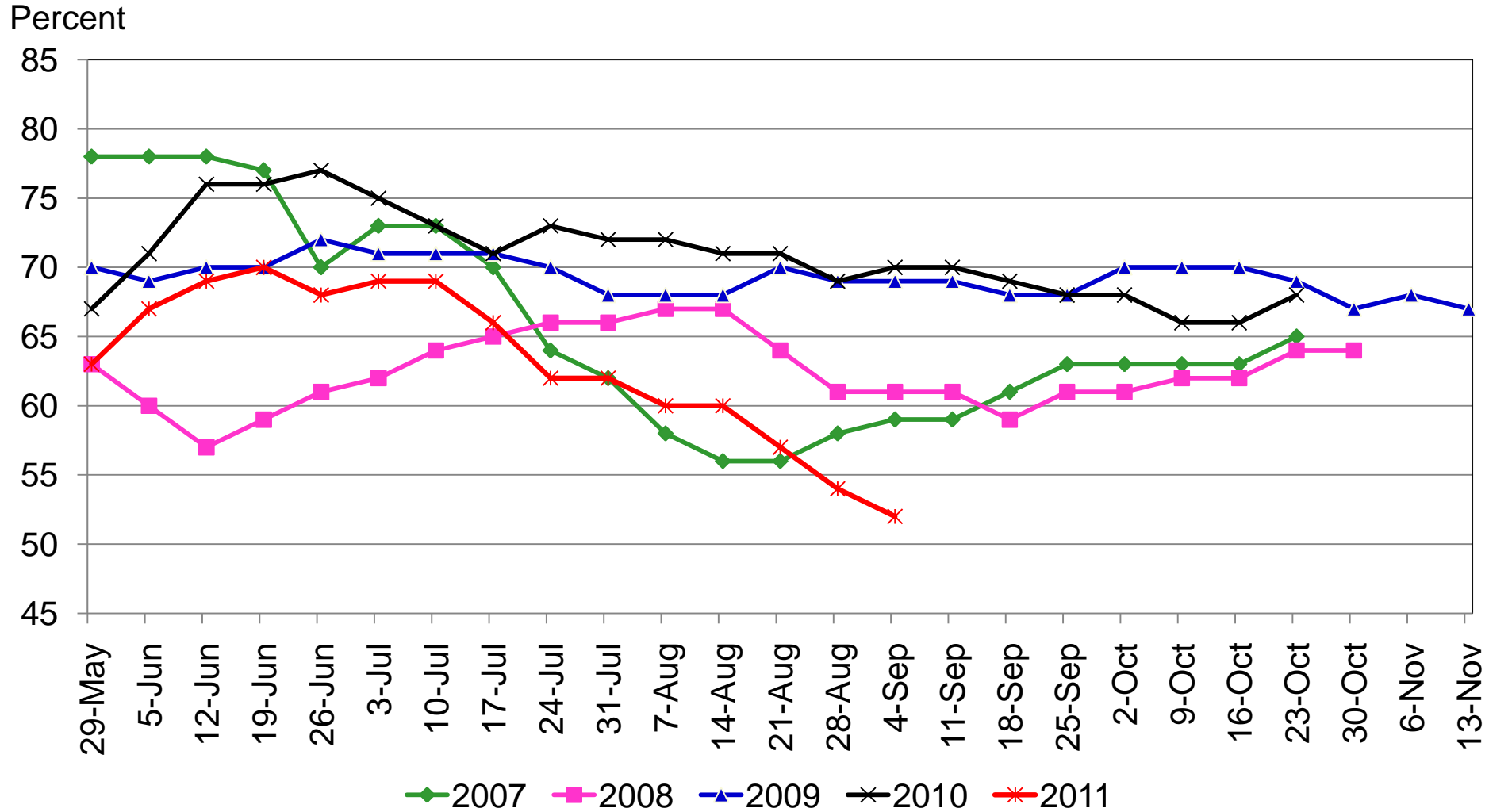
Survey Overview

	Ag Yield	Objective Yield
Survey Type	Farmer Reported	Field Measurement
Crops Included	Field Crops	Corn, Soybeans, Cotton
Sample Size	>12,500	
Collection Period	Aug 30 – Sep 7	Aug 25 – Sep 1



Corn Condition

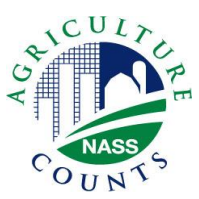
Percent Rated Good to Excellent





September 2011 Crop Production

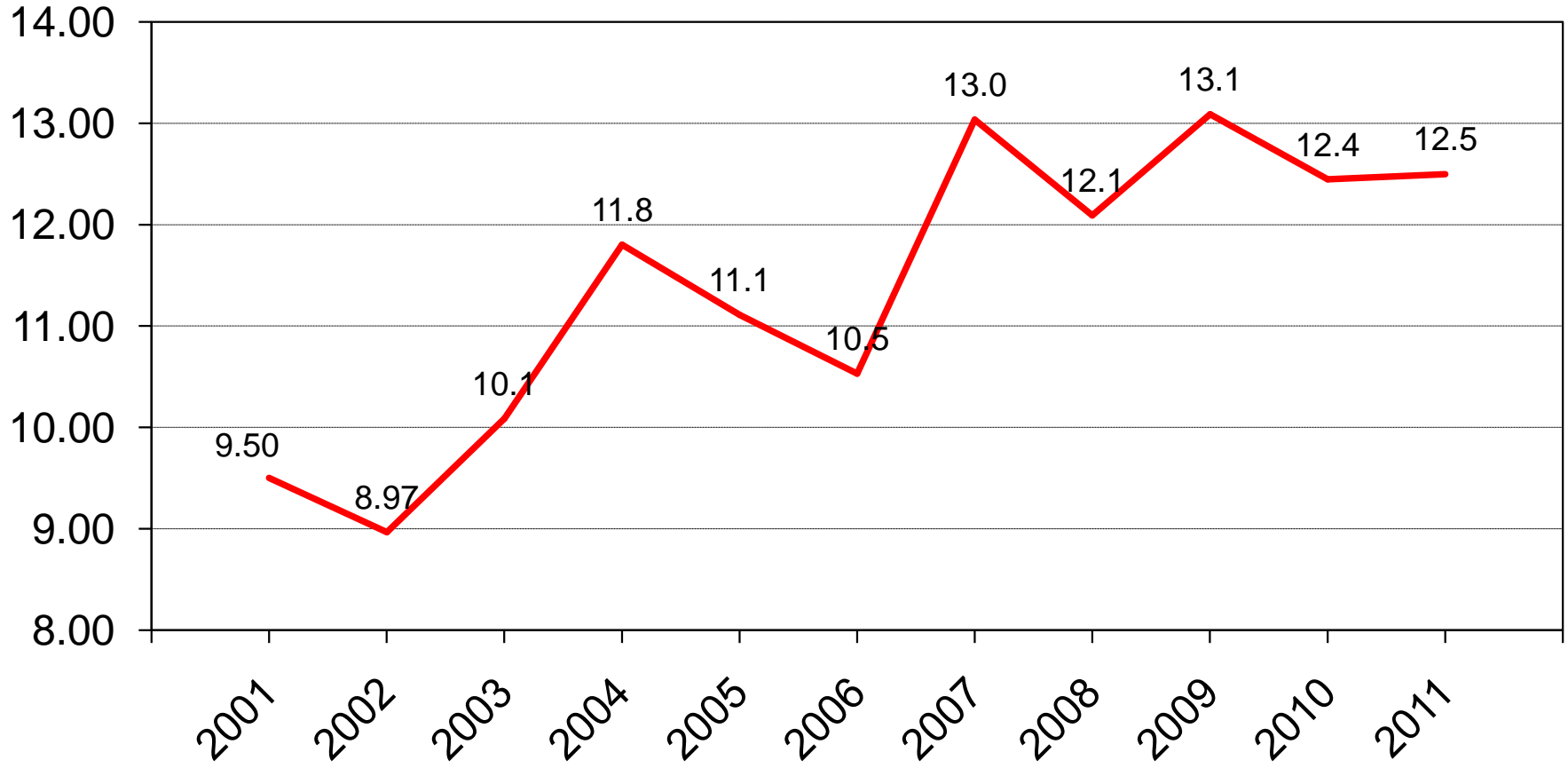
Crop	Unit	September 2011	% Change from Previous Forecast	% Change from Previous Season
Corn				
Harvested	Mil Ac	84.4	NC	+ 3.6
Yield	Bu/Ac	148.1	- 3.2	- 3.1
Production	Bil Bu	12.5	- 3.2	+ 0.4



U.S. Corn Production



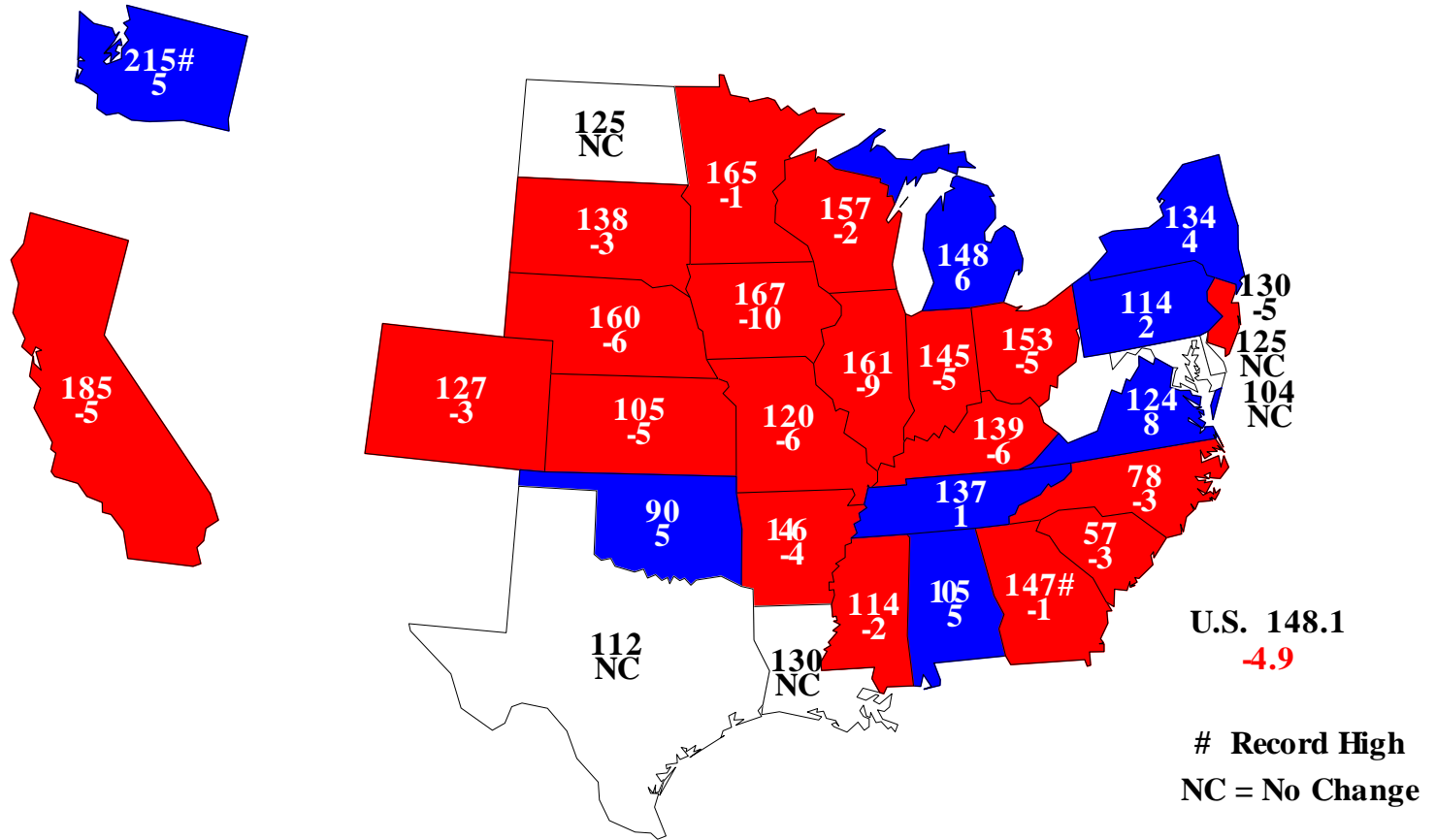
Billion Bushels

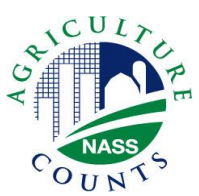




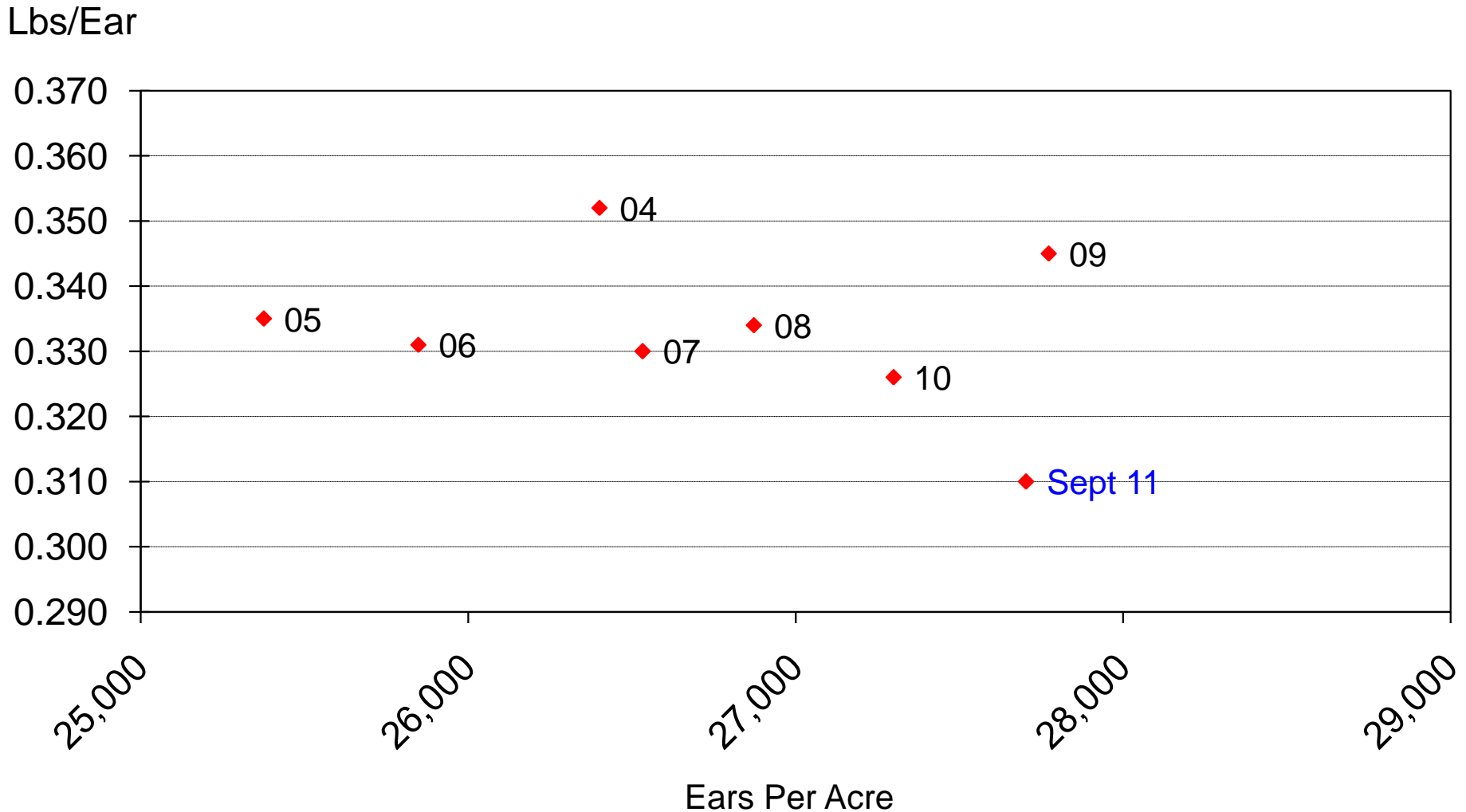
Com for Grain Yields, September 1, 2011

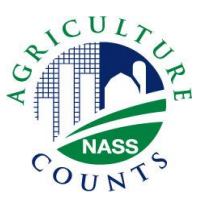
Bushels and Change From Previous Month





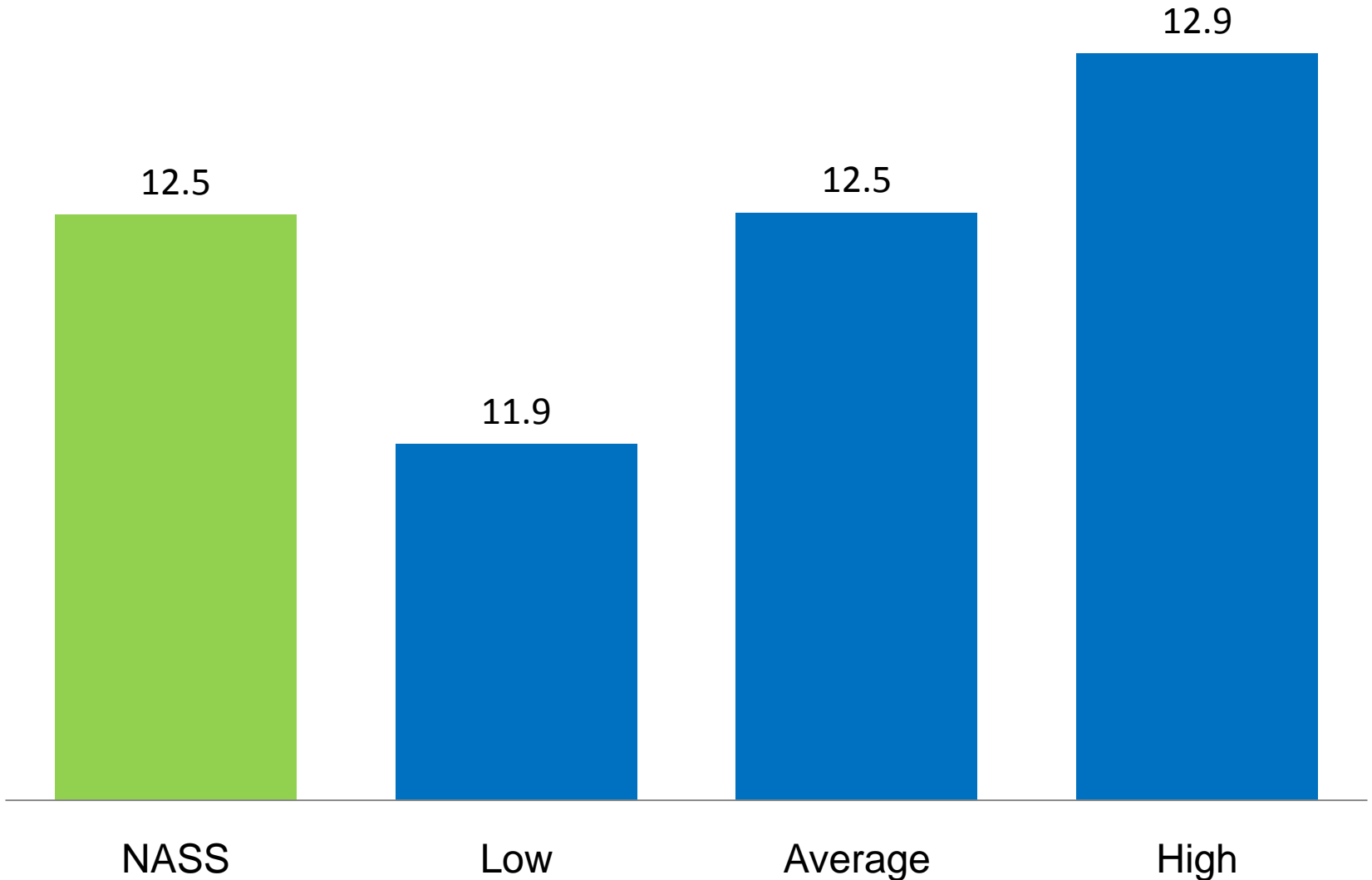
Corn Objective Yield Region Derived Grain Weight vs Ears per Acre

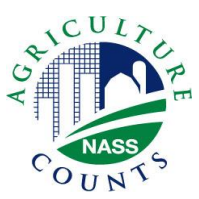




NASS Estimates vs. Expectations

Corn Production (Billion Bushels)



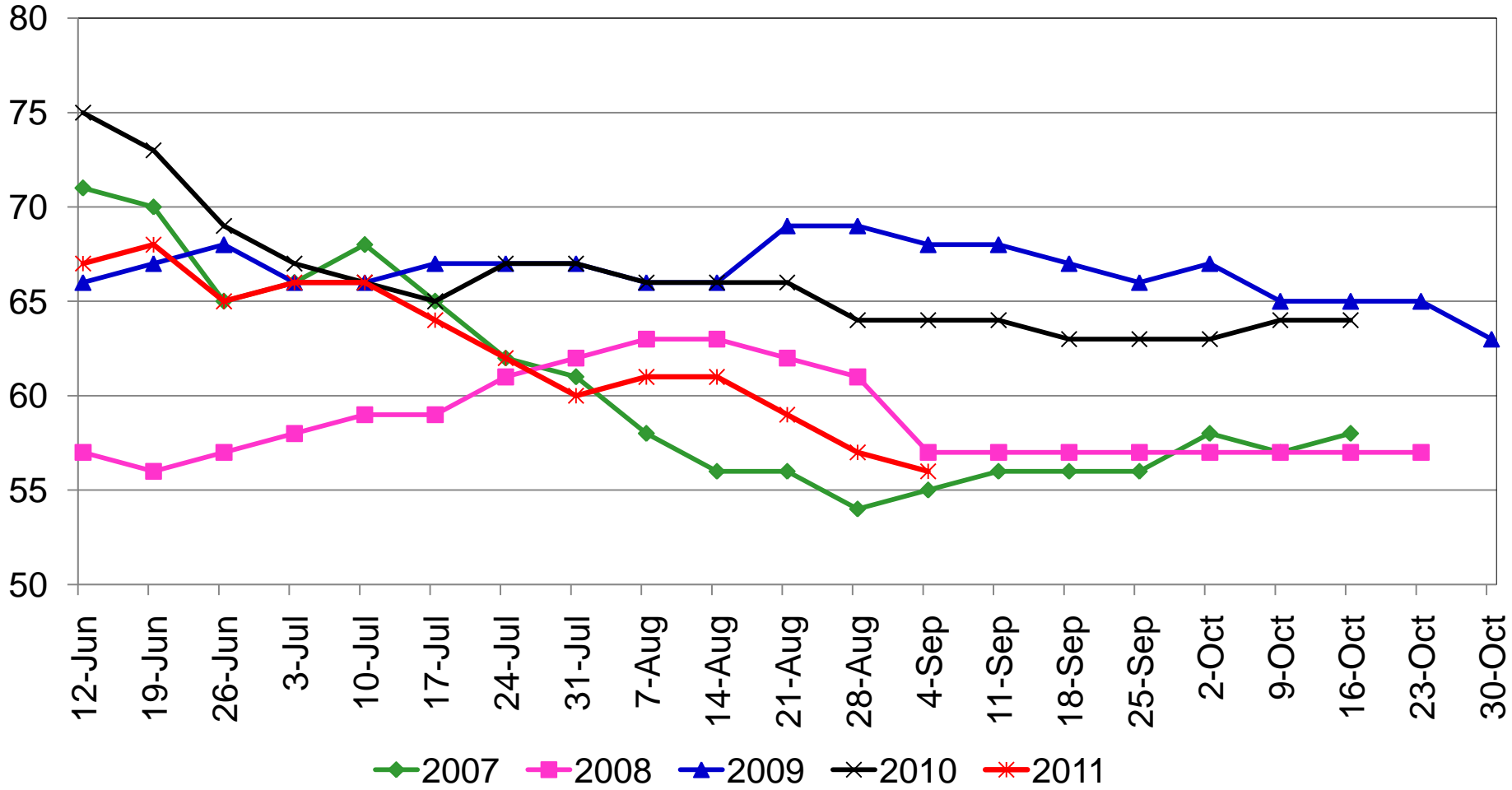


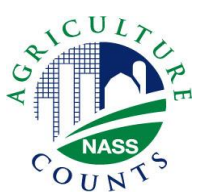
Soybean Condition

Percent Rated Good to Excellent



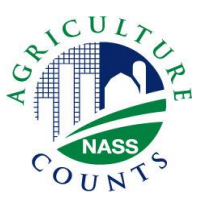
Percent





September 2011 Crop Production

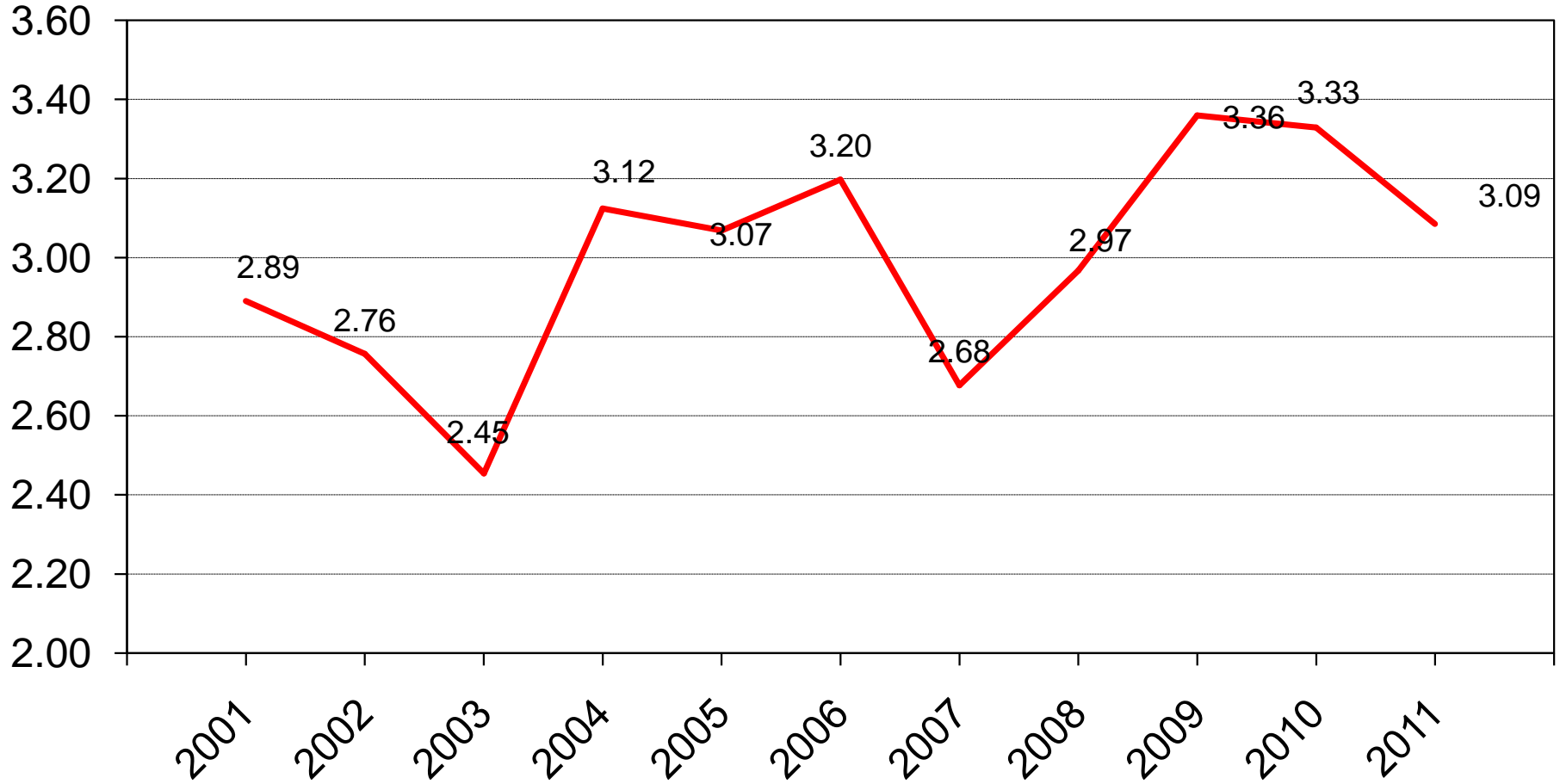
Crop	Unit	September 2011	% Change from Previous Forecast	% Change from Previous Season
Soybeans				
Harvested	Mil Ac	73.8	NC	- 3.6
Yield	Bu/Ac	41.8	+ 1.0	- 3.9
Production	Bil Bu	3.09	+ 1.0	- 7.3



U.S. Soybean Production



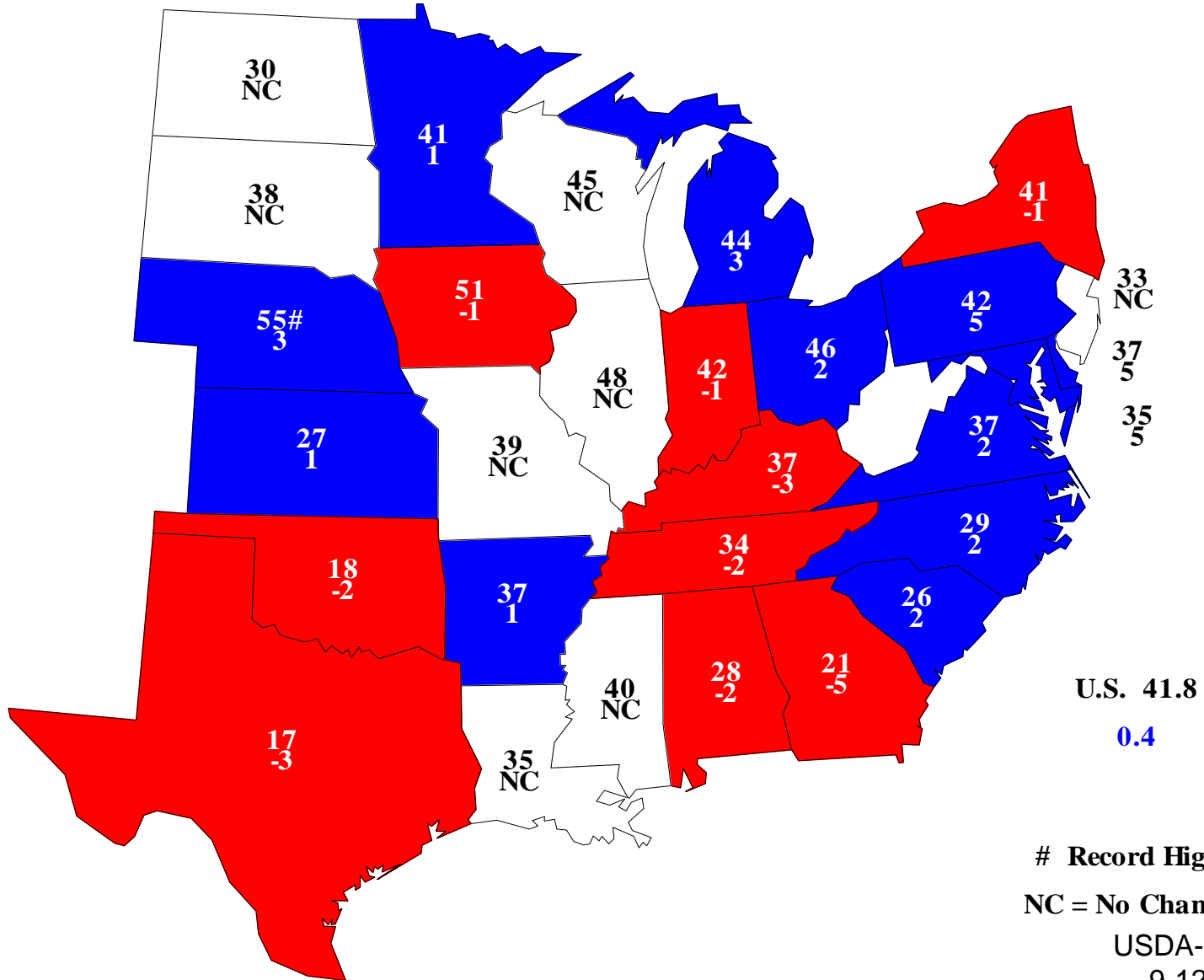
Billion Bushels



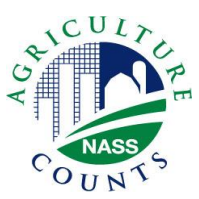


Soybean Yields, September 1, 2011

Bushels and Change From Previous Month



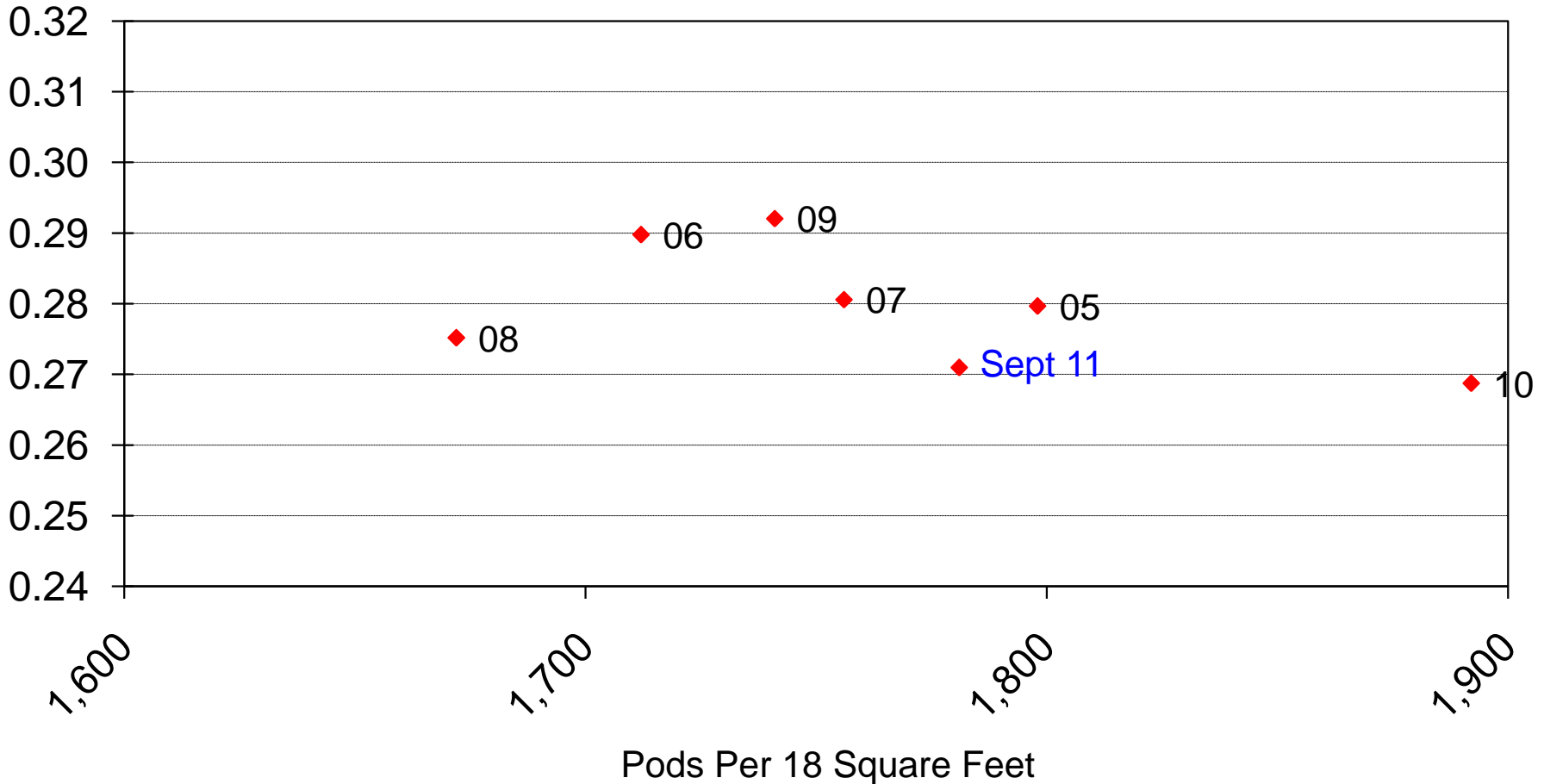
Record High
NC = No Change
USDA-NASS
9-12-11

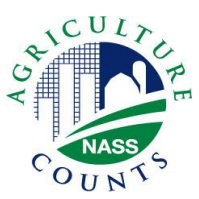


Soybean Objective Yield Region Derived Pod Weight vs Pod Count



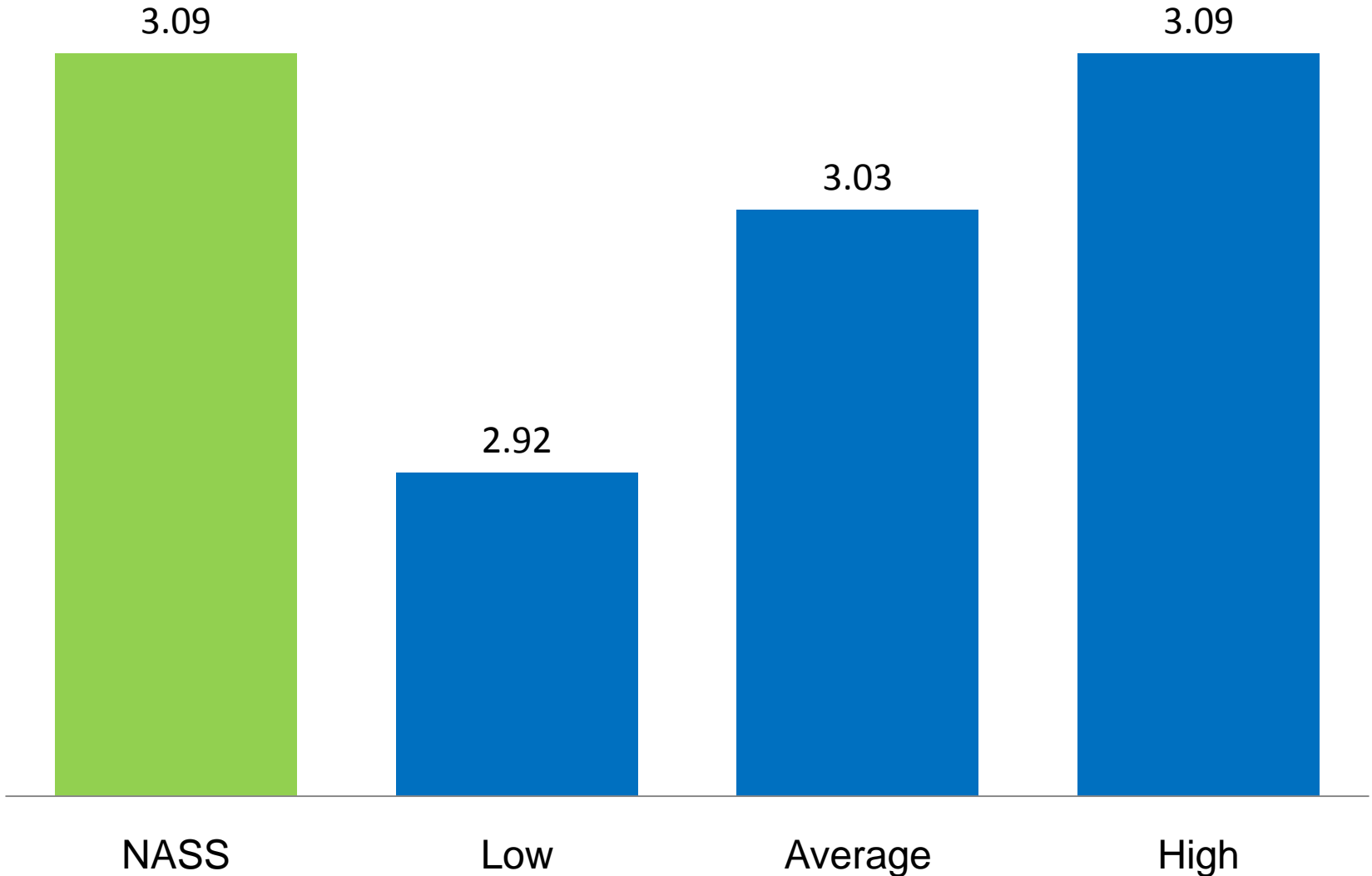
Grams/Pod





NASS Estimates vs. Expectations

Soybean Production (Billion Bushels)



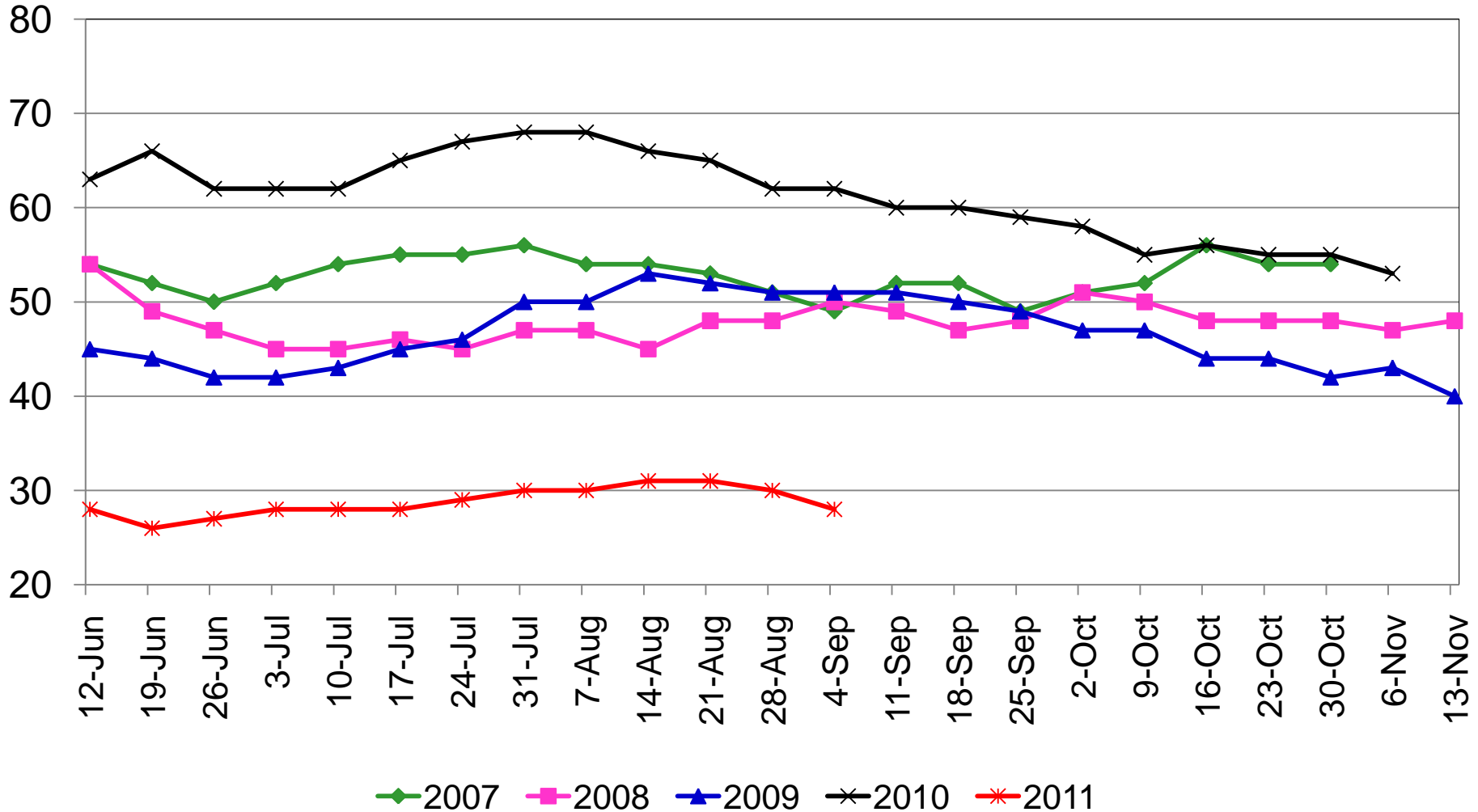


Cotton Condition

Percent Rated Good to Excellent



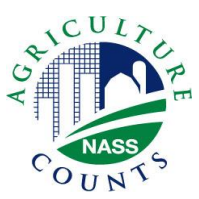
Percent





September 2011 Crop Production

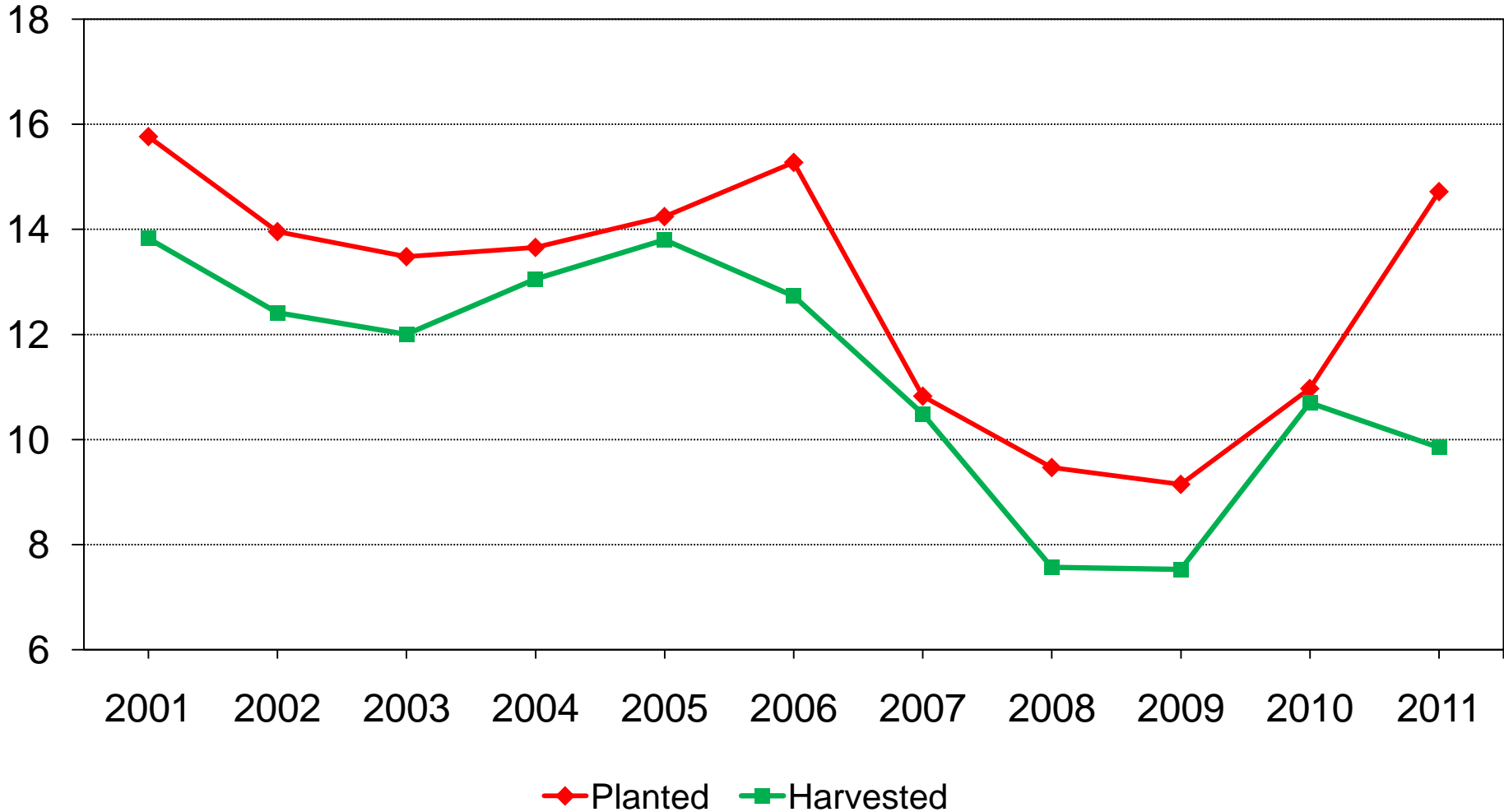
Crop	Unit	September 2011	% Change from Previous Forecast	% Change from Previous Season
Cotton				
Planted	Mil Ac	14.7	+ 7.2	+ 34.1
Harvested	Mil Ac	9.85	+ 1.9	- 7.9
Yield	Lbs/Ac	807	- 1.8	- 0.6
Production	Mil Bales	16.6	+ <0.1	- 8.5

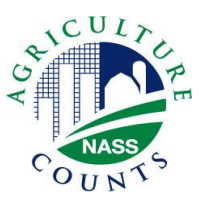


U.S. All Cotton Acres



Million acres

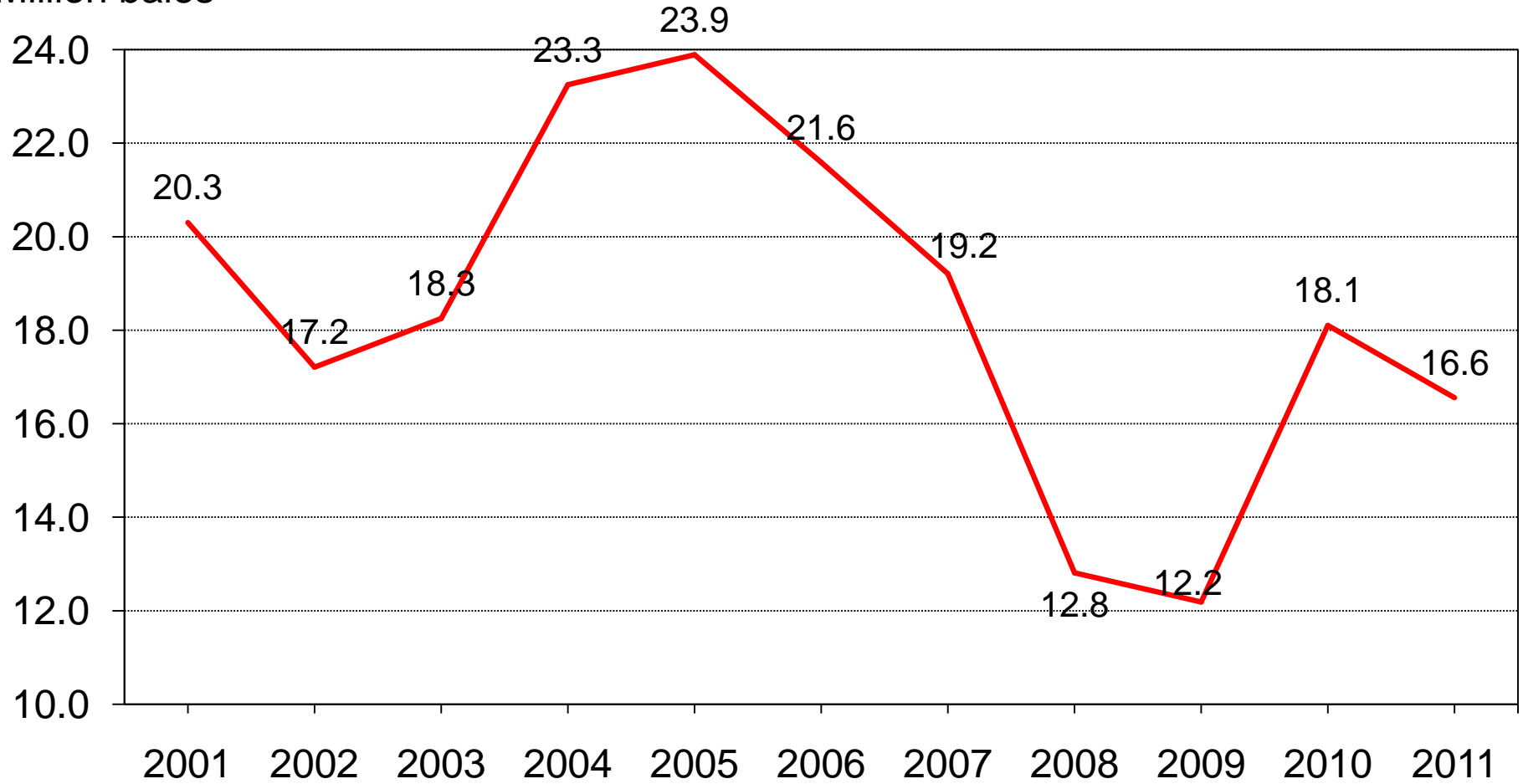




U.S. All Cotton Production



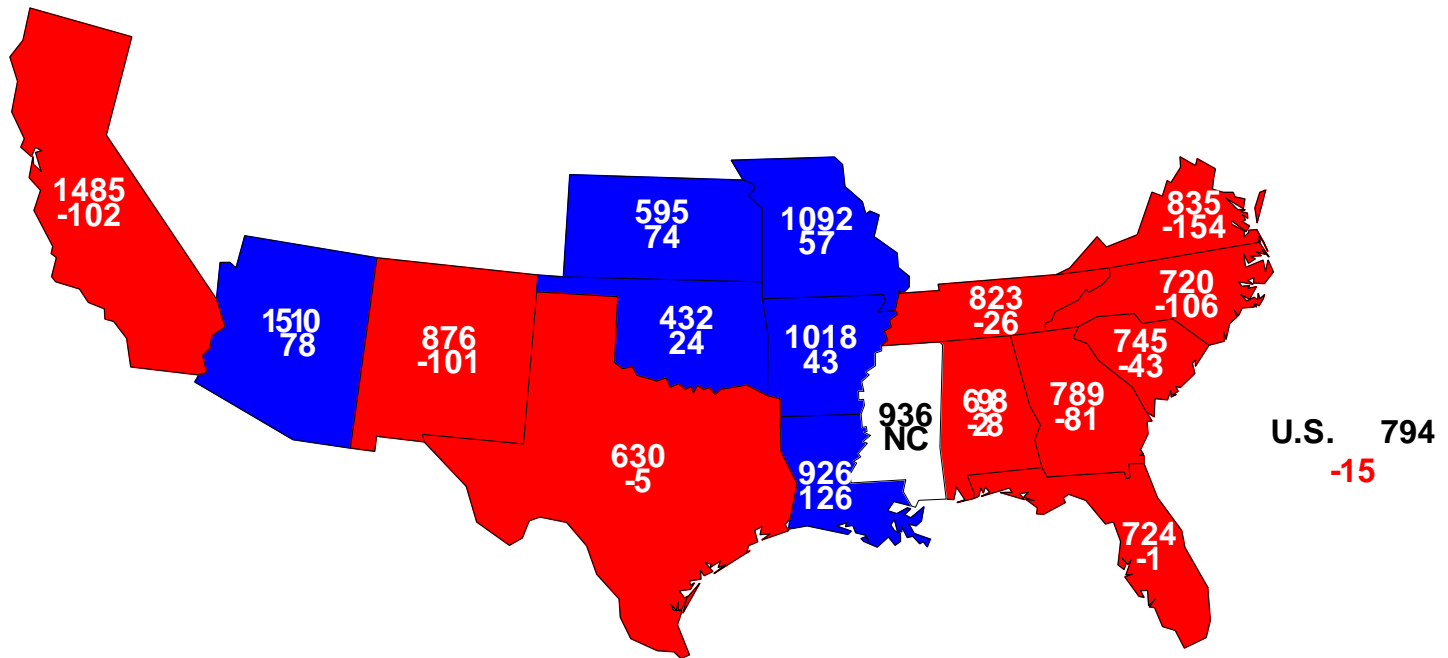
Million bales





Upland Cotton Yield, September 1, 2011

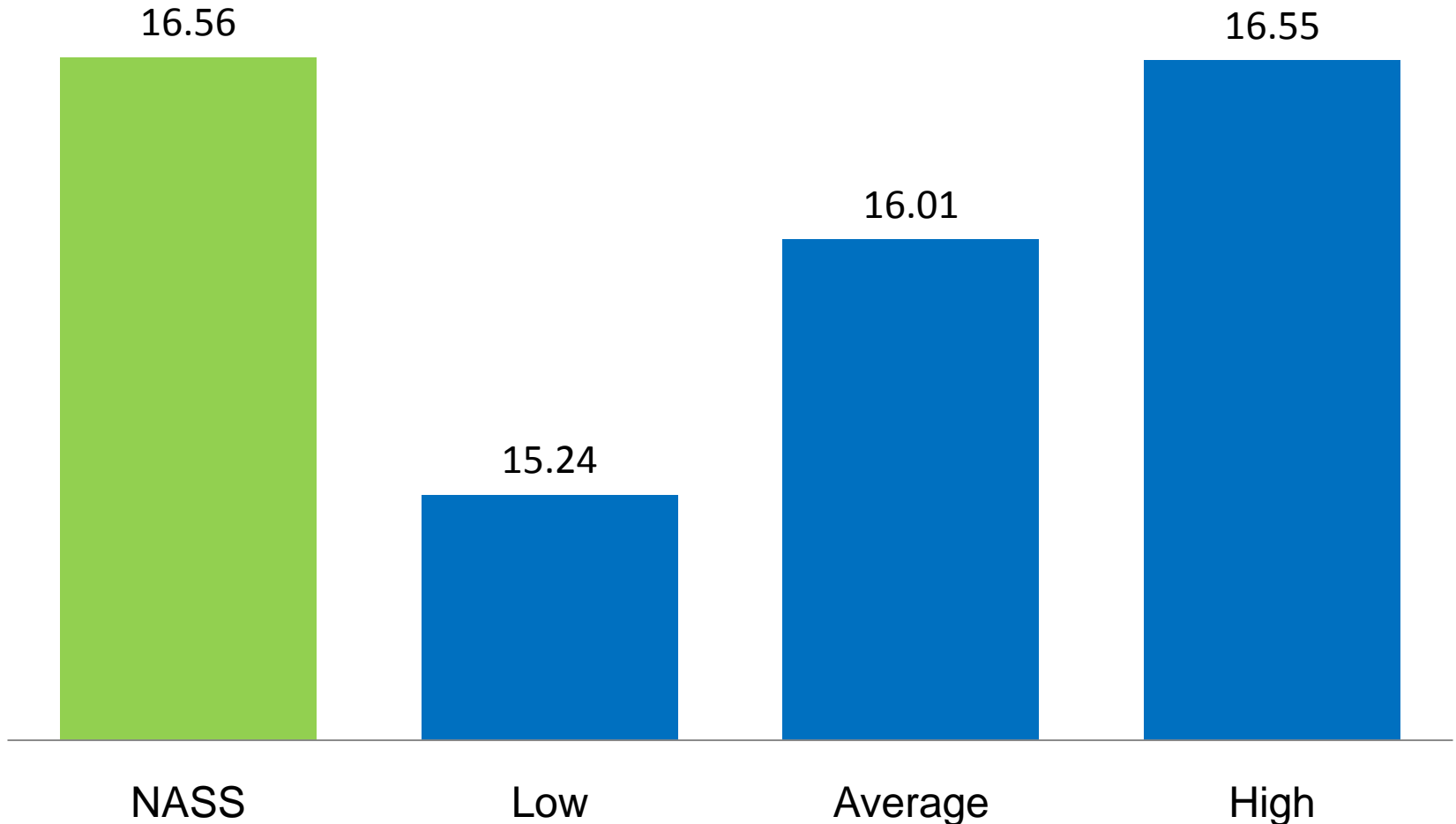
Pounds and Change From Previous Month





NASS Estimates vs. Expectations

Cotton Production (Million Bales)





September 2011 Crop Production

Crop	Unit	September 2011	% Change from Previous Forecast	% Change from Previous Season
Rice				
Planted	Mil Ac	2.69	+ 0.6	- 25.9
Harvested	Mil Ac	2.62	- 0.8	- 27.4
Yield	Lbs/Ac	7,273	+ 2.2	+ 8.1
Production	Mil Cwt	191	+ 1.5	- 21.5



September 2011 Crop Production

Crop	Unit	September 2011	% Change from Previous Forecast	% Change from Previous Season
Peanuts				
Planted	Mil Ac	1.15	- 0.4	- 10.9
Harvested	Mil Ac	1.11	- 0.3	- 11.2
Yield	Lbs/Ac	3,104	- 4.0	- 6.3
Production	Bil Lbs	3.46	- 4.3	- 16.8



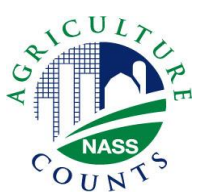
September 2011 Crop Production

Crop	Unit	September 2011	% Change from Previous Forecast	% Change from Previous Season
Sorghum	Mil Bu	244	+ 1.4	- 29.3
All Tobacco	Mil Lbs	633	- 12.9	- 12.0
Sugarbeets	Mil Tons	29.2	- 4.0	- 8.5
Sugarcane	Mil Tons	28.6	- 0.2	+ 4.6
Summer Potatoes	Mil Cwt	13.4	+ 10.5	+ 15.0



September 2011 Crop Production

Crop	Unit	September 2011	% Change from Previous Forecast	% Change from Previous Season
Navel Oranges (CA)	Mil Tons	1.76	---	- 8.3
Hazelnuts (OR)	Thou Tons	41.0	---	+ 46.0
Walnuts (CA)	Thou Tons	485	---	- 3.6



United States Department of Agriculture
National Agricultural Statistics Service

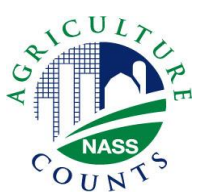
Upcoming Reports

September 22 Potato Annual Summary
Citrus Annual Summary

September 28 Quarterly Hogs and Pigs

September 30 Grain Stocks
Rice Stocks
Small Grains Summary

October 12 Crop Production



United States Department of Agriculture
National Agricultural Statistics Service



All Reports Available At

www.nass.usda.gov

For Questions

202-720-2127

800-727-9540

nass@nass.usda.gov