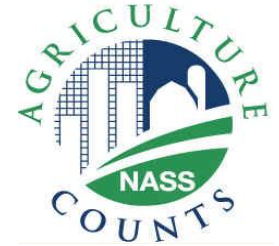




United States Department of Agriculture
National Agricultural Statistics Service



HOGS & PIGS INVENTORY

Secretary's Briefing



September Hogs and Pigs

Data Collection Period: August 31- September 16

Sample Size 8,712

Collection Methods

Phone, mail, internet, personal interview

Main Data Items

Total Inventory, by class, weight group, and quarter

Sows Farrowing, pig crop, and pigs per litter

U.S. Hogs & Pigs Revisions

Quarter	Item	(000) Hd		% Revision
		Change	Estimate	
March 1, 2011	All Hogs & Pigs	-125	63,684	-0.2%
	Pig Crop	-117	27,869	-0.4%
June 1, 2011	All Hogs & Pigs	-300	64,700	-0.5%

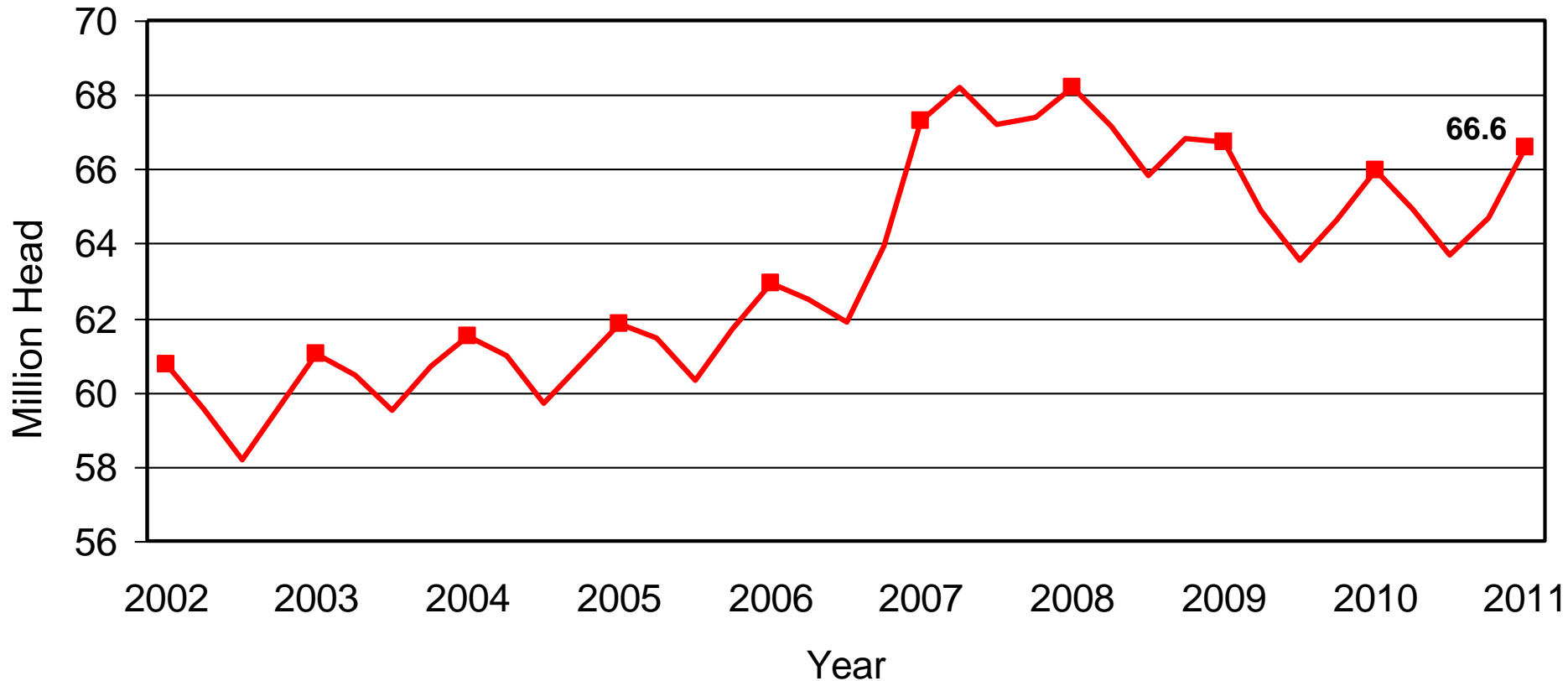


U.S. Hogs & Pigs Inventory September 1, 2011

Inventory Items	(000) Hd	% PY
All Hogs & Pigs	66,599	101%
Breeding Hogs	5,806	101%
Market Hogs	60,793	101%
Jun – Aug Pig Crop	29,084	101%
Sows Farrowing	2,901	99%
Litter Rate	Number	% PY
Jun – Aug 2011	10.03	102%
Farrowing Intentions	(000) Hd	% PY
Sep – Nov 2011	2,874	100%
Dec 2011 – Feb 2012	2,857	100%

U.S. Quarterly Hogs and Pigs Inventory

September 1, 2011

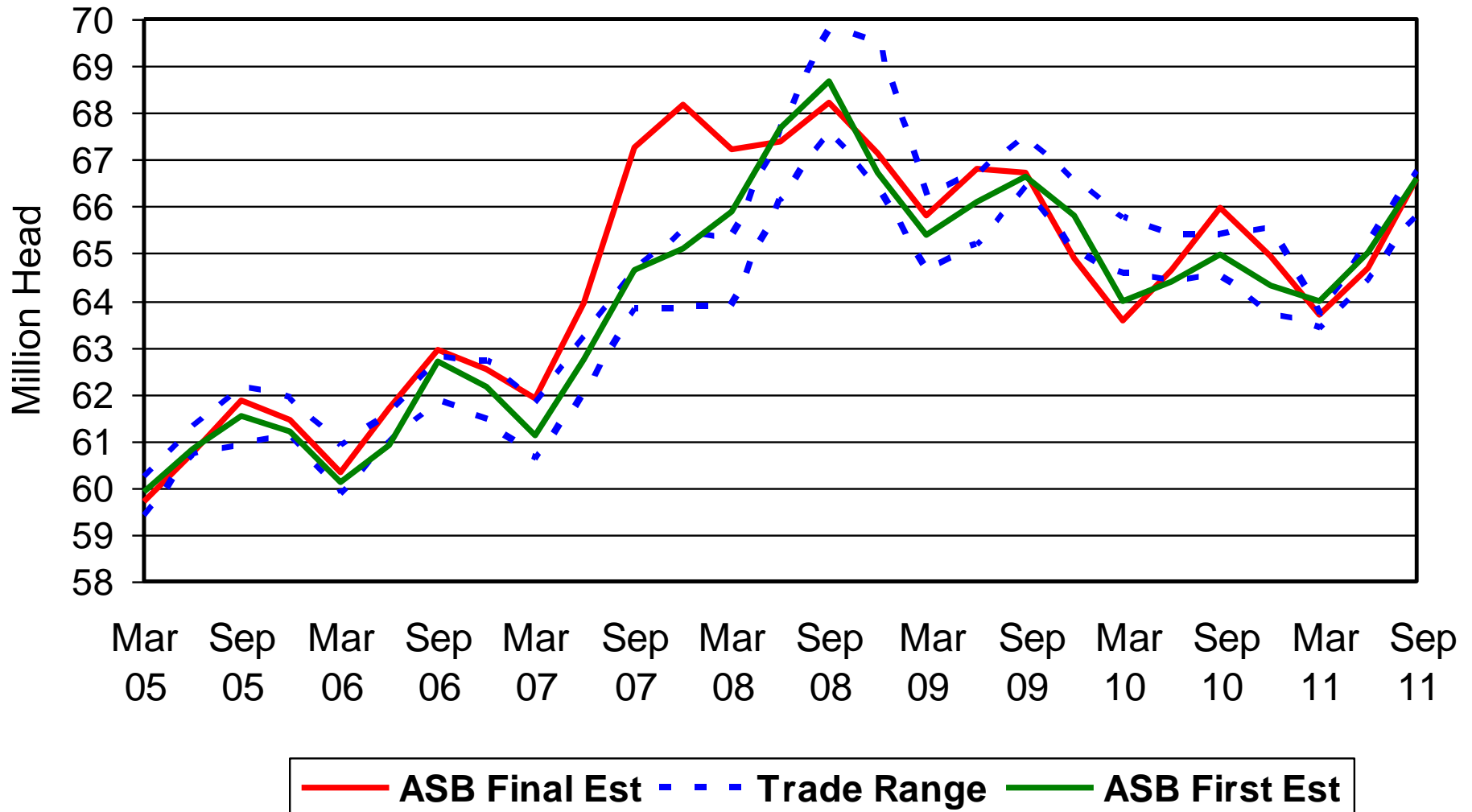


NASS Estimates Compared to Trade Expectations

Percent of Previous Year

Inventory Items	NASS Estimate	Trade Average	Trade Range
All Hogs & Pigs	101.0%	100.5%	99.8% – 101.2%
Breeding Hogs	100.6%	100.1%	99.6% – 100.5%
Market Hogs	101.0%	100.5%	99.8% – 101.3%
Jun – Aug Pig Crop	100.7%	99.8%	99.0% – 101.2%
Farrowing Intentions			
Sep – Nov 2011	99.8%	99.1%	98.5% – 100.1%
Dec 2011 – Feb 2012	100.4%	99.5%	98.5% – 100.7%

All Hogs and Pigs Board vs Trade Expectations

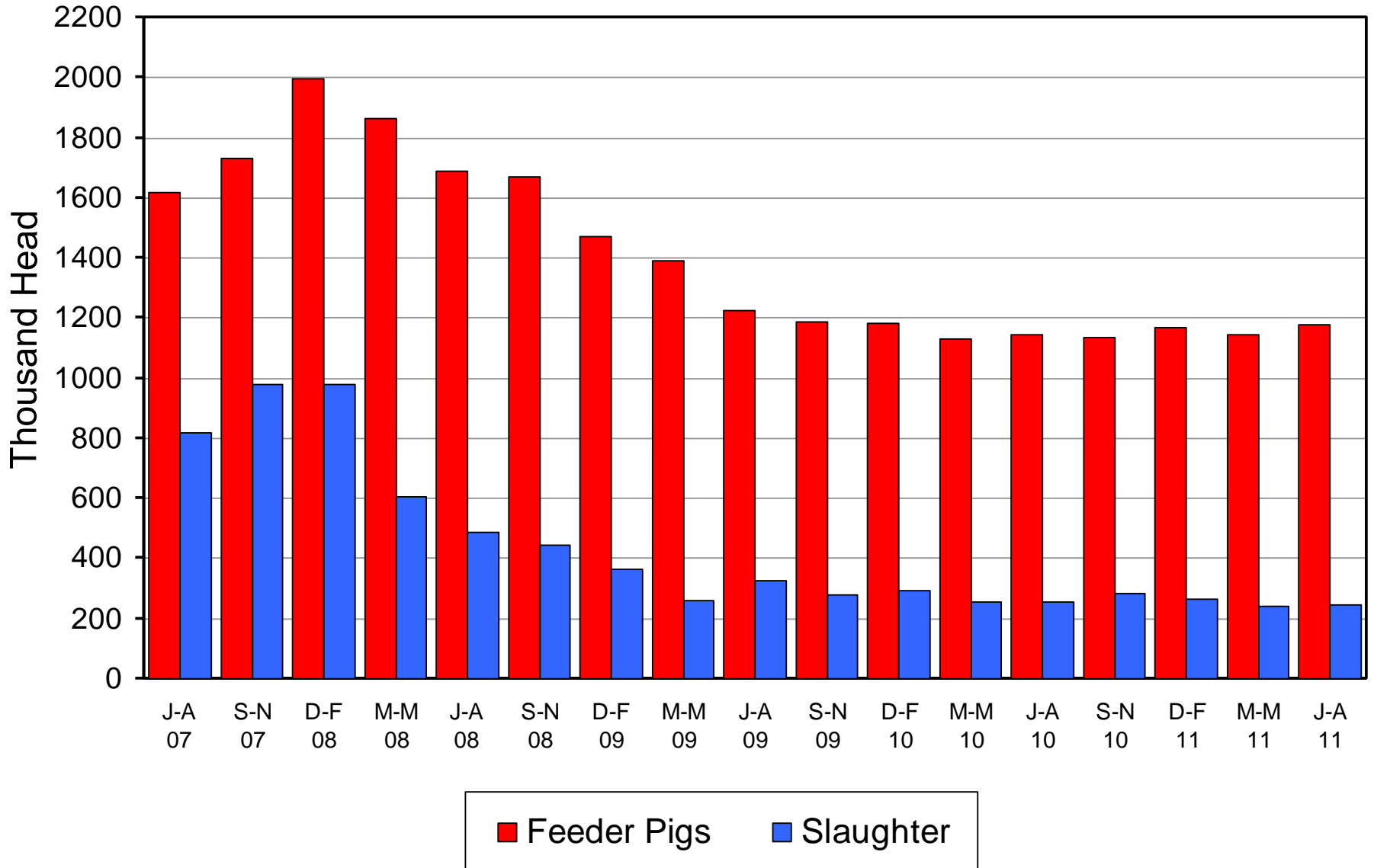


Hog Slaughter Expectations Based on Market Hog Inventories

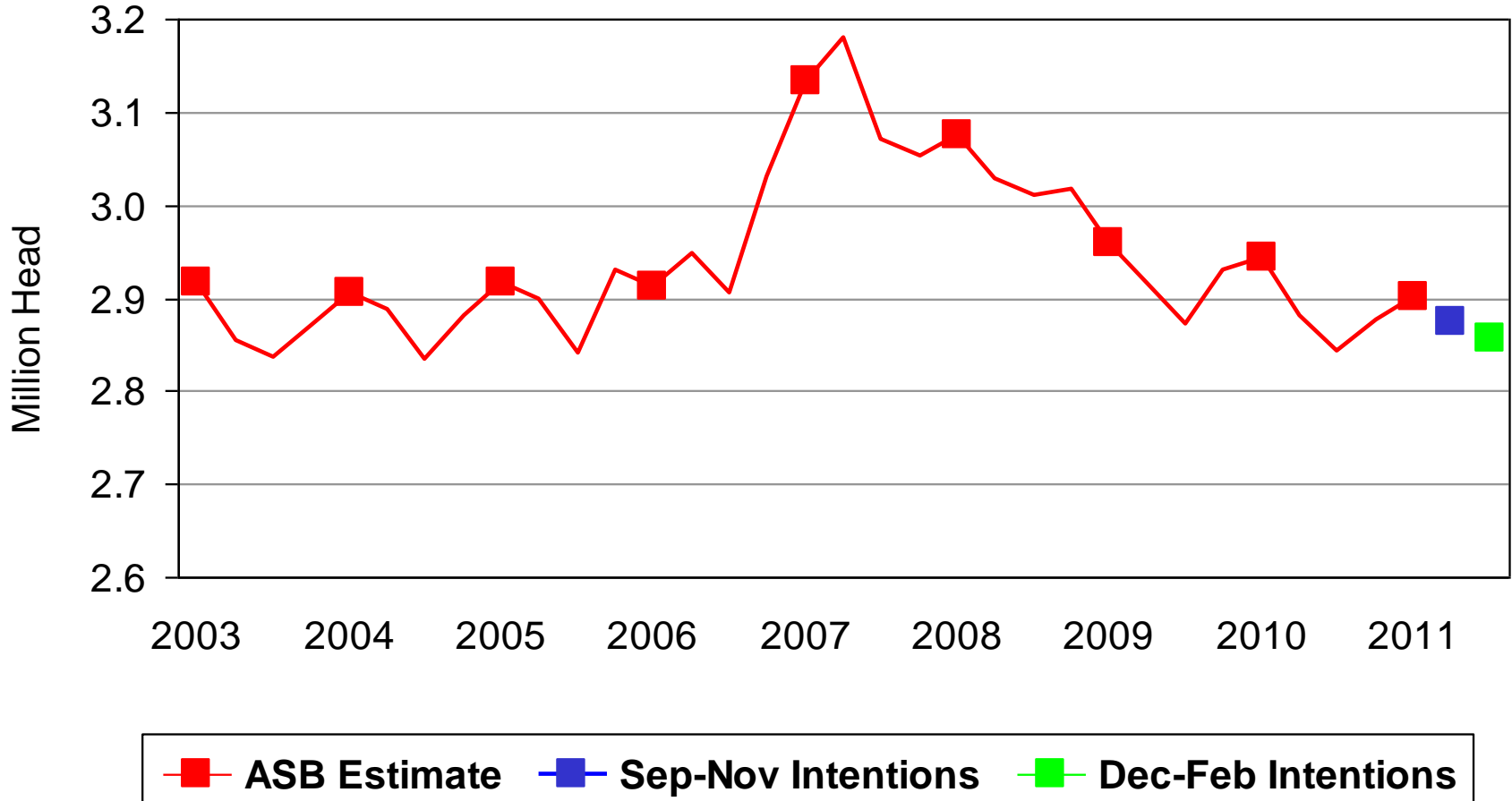
Weight	Head (000)	% PY	Expected Slaughter Period
180+ Pounds	10,876	103.4%	Sep 1 – Oct 1
120 – 179 Pounds	12,762	100.7%	Oct 2 – Nov 5
50 – 119 Pounds	17,459	100.4%	Nov 6 – Dec 31
< 50 Pounds	19,696	100.4%	Jan 1 – Feb 25

Canadian Imports by Quarter

Feeder Pigs and Slaughter Hogs



U.S. Quarterly Sows Farrowed June - August



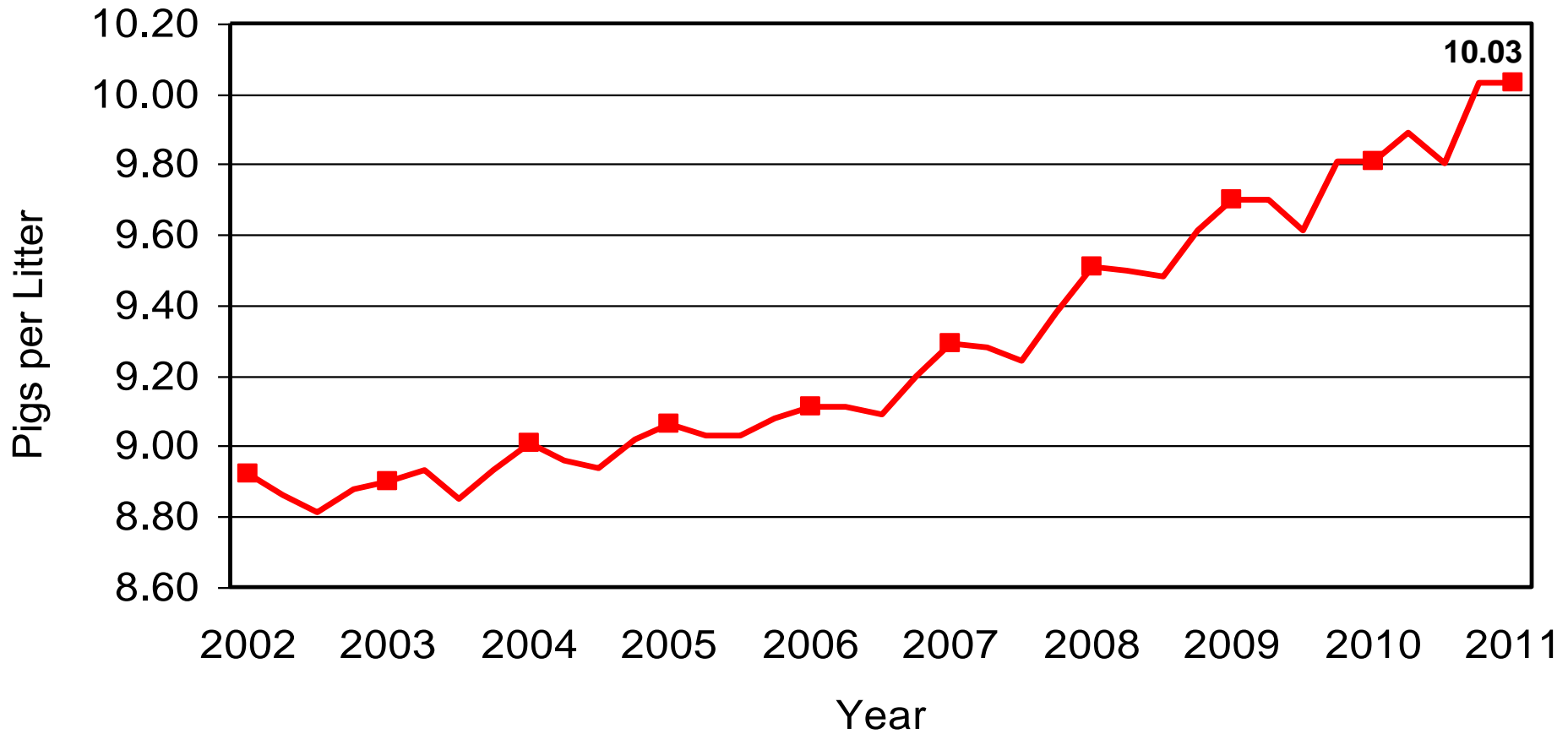


Breeding Herd Inventory Disposition & Utilization

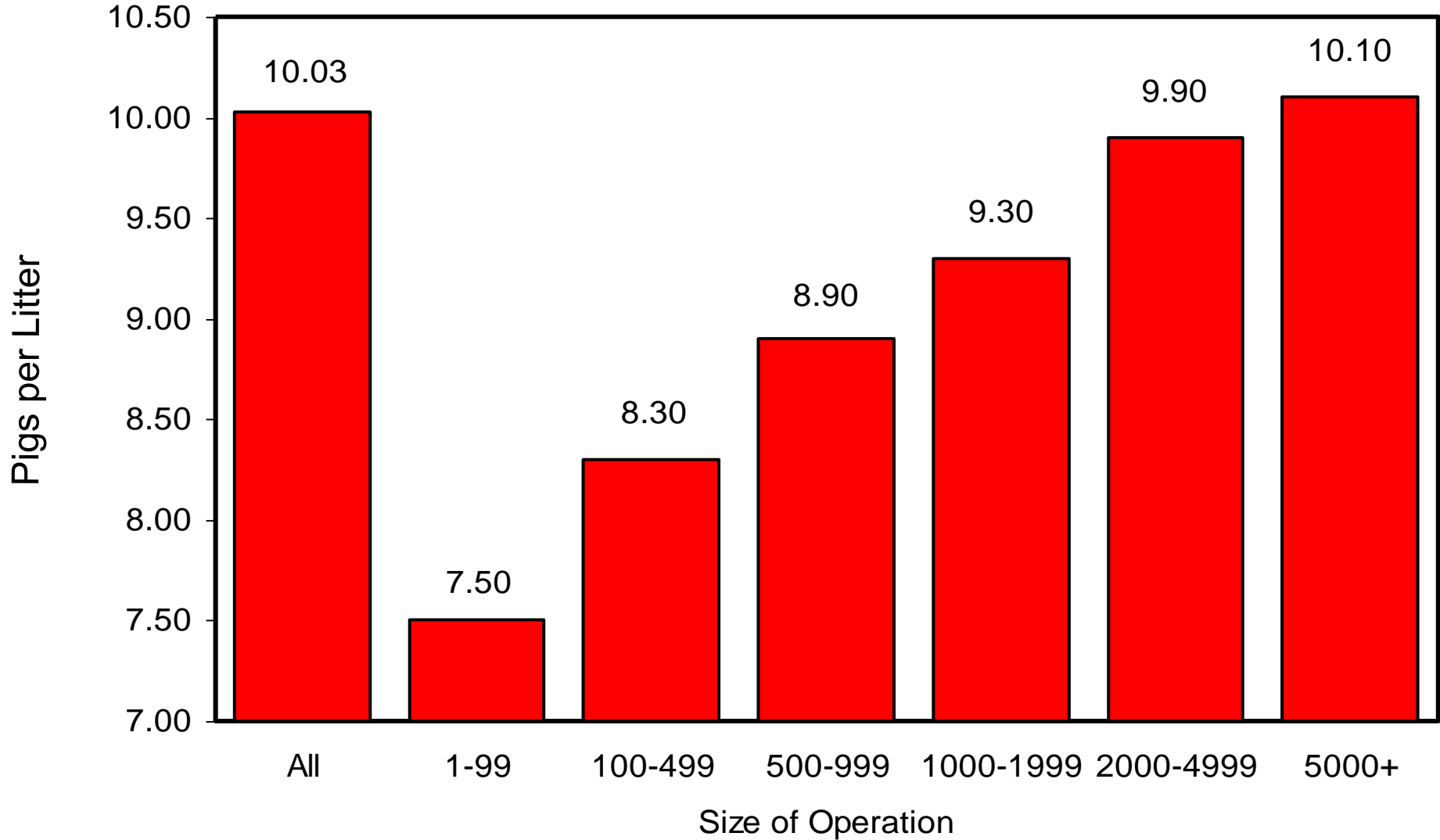


Year	Jun 1 Estimate	Slaughter	Additions	Sep 1 Estimate	Sow Utilization
	(000) Hd	(000) Hd	(000) Hd	(000) Hd	Percent
2002	6,208	919	762	6,051	46%
2003	6,036	883	795	5,948	48%
2004	5,947	891	916	5,972	49%
2005	5,988	846	851	5,993	49%
2006	6,080	896	915	6,099	48%
2007	6,169	945	984	6,208	51%
2008	6,131	1,017	947	6,061	50%
2009	5,968	963	870	5,875	50%
2010	5,788	818	800	5,770	51%
2011	5,803	834	837	5,806	50%

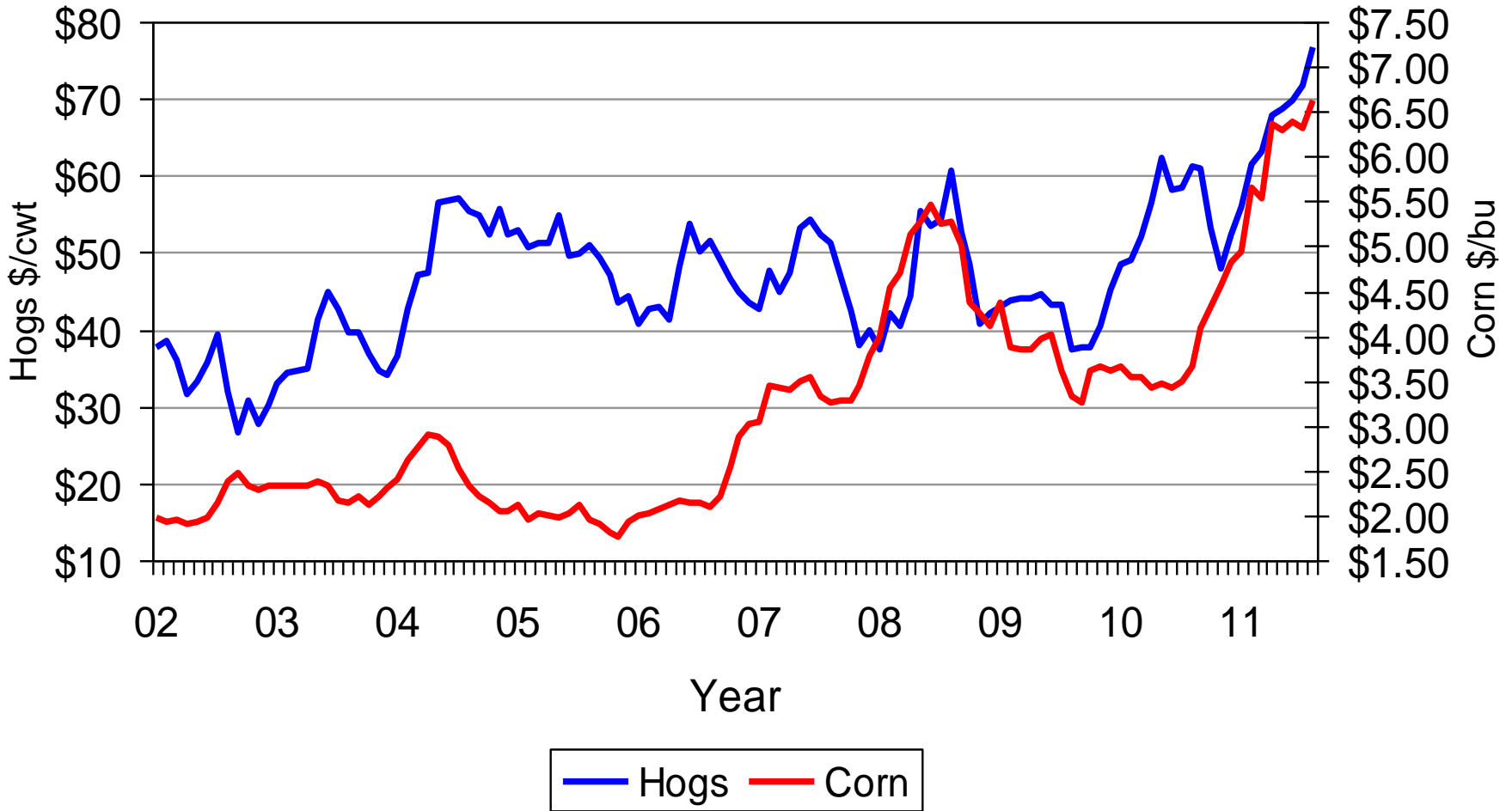
U.S. Quarterly Pigs per Litter June - August



U.S. Pigs per Litter by Size of Operation June – August 2011

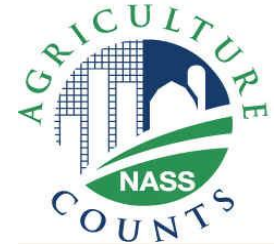


U.S. Prices Received by Farmers for Hogs & Corn





United States Department of Agriculture
National Agricultural Statistics Service



Upcoming Reports

September 29	Agricultural Prices
September 30	Grain Stocks, Small Grains Summary
October 12	Crop Production
October 21	Cattle on Feed