



United States Department of Agriculture
National Agricultural Statistics Service



MAY CROP PRODUCTION

Executive Summary

MAY 10, 2012

8:30 AM



Contents



Field Crops	Fruits/Nuts
Winter Wheat	Citrus
Hay Stocks	Almonds
Cotton	
Tobacco	
Potatoes	

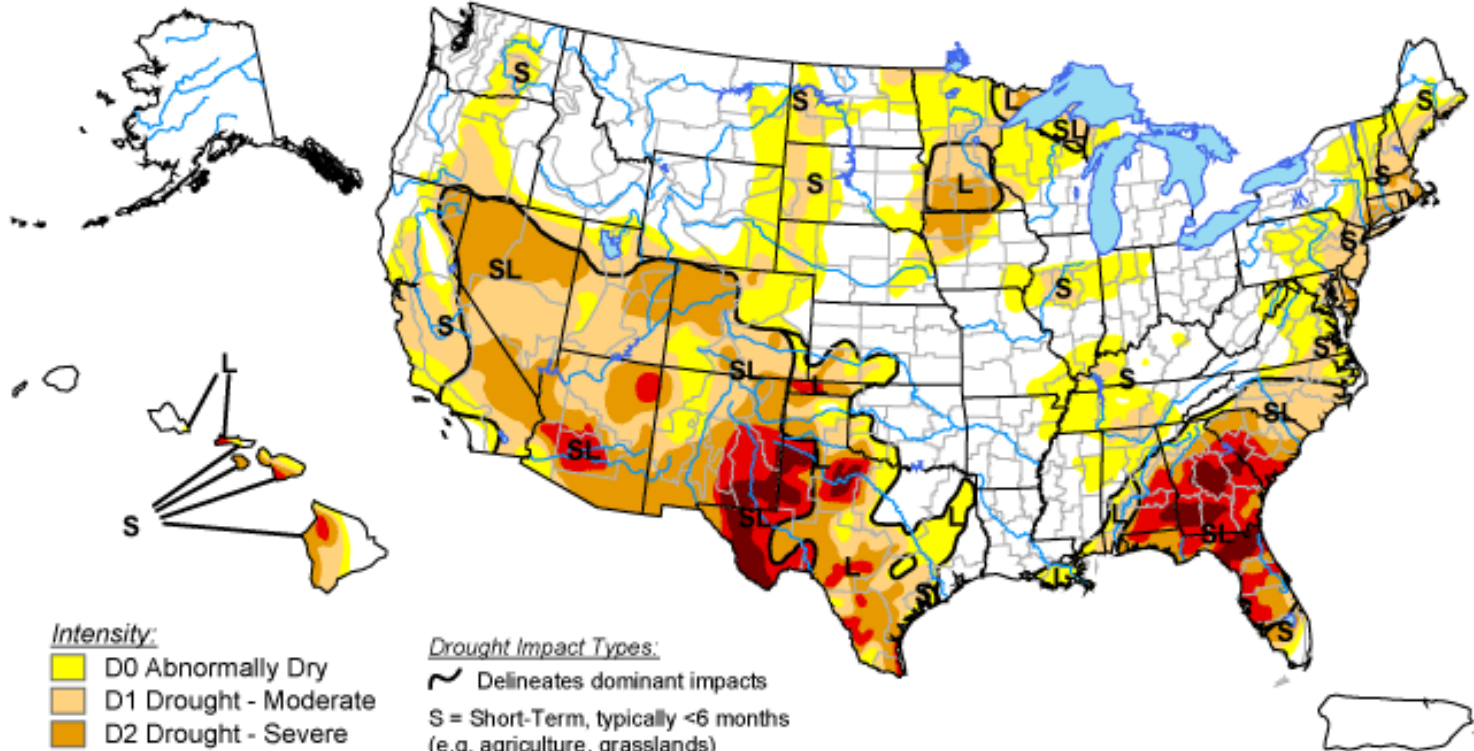


Survey Overview

	Ag Yield	Objective Yield
Survey Type	Farmer Reported	Field Measurement
Crops Included	Winter and Durum Wheat and Hay Stocks	Winter Wheat
States	All except AK and HI	KS, OK, TX
Sample Size	15,100	335
Collection Period	Apr 26 - May 7	Apr 24 - May 1

U.S. Drought Monitor

May 1, 2012
Valid 7 a.m. EDT



Intensity:

- D0 Abnormally Dry
- D1 Drought - Moderate
- D2 Drought - Severe
- D3 Drought - Extreme
- D4 Drought - Exceptional

Drought Impact Types:

- Delineates dominant impacts
- S = Short-Term, typically <6 months (e.g. agriculture, grasslands)
- L = Long-Term, typically >6 months (e.g. hydrology, ecology)

The Drought Monitor focuses on broad-scale conditions. Local conditions may vary. See accompanying text summary for forecast statements.

<http://droughtmonitor.unl.edu/>



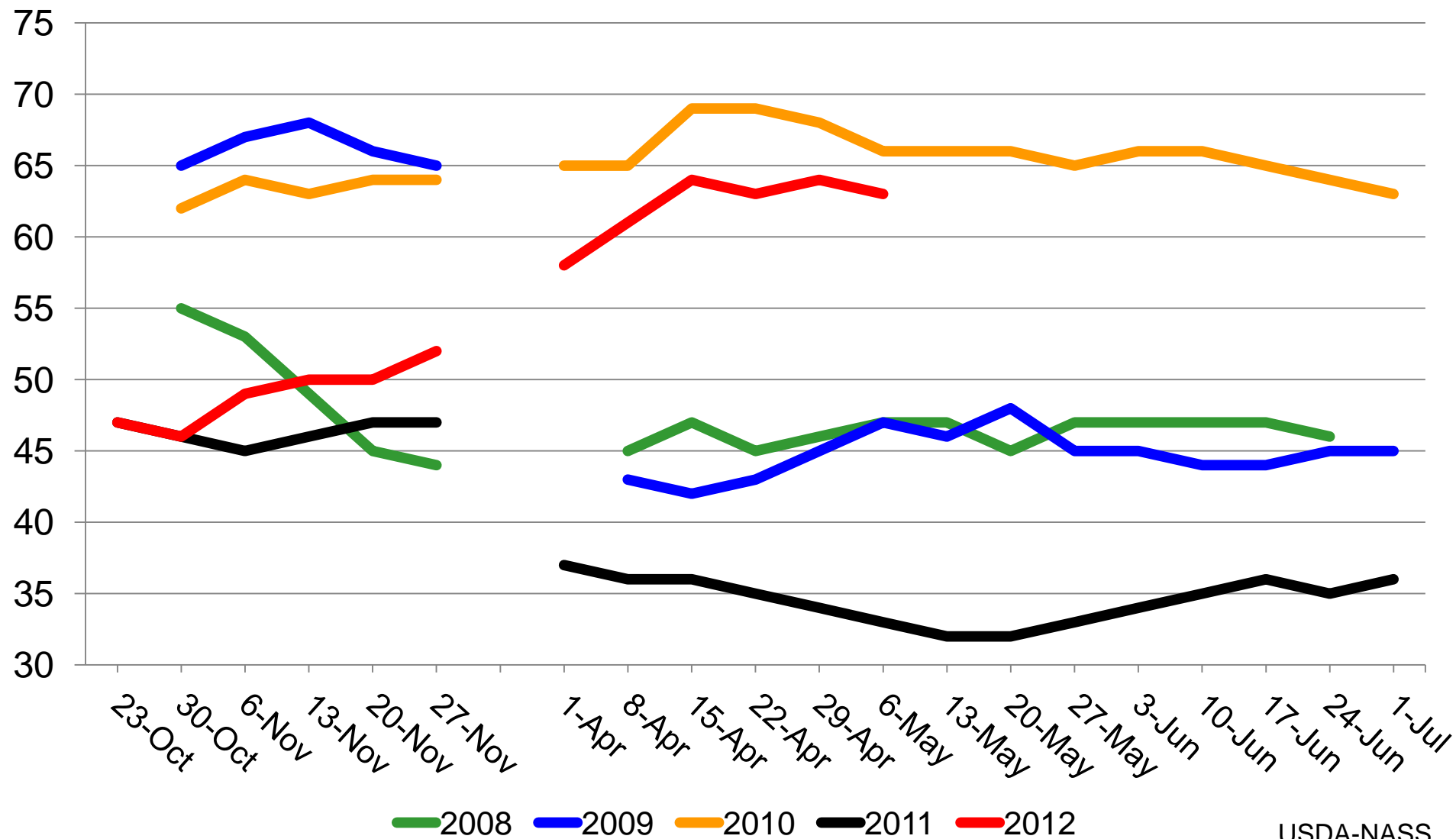
Released Thursday, May 3, 2012

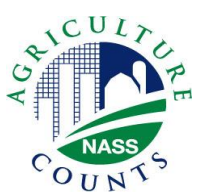
Author: Matthew Rosencrans, NOAA/NWS/NCEP/CPC



Winter Wheat Condition

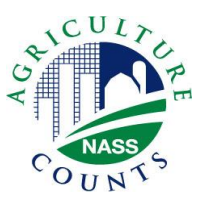
Percent Rated Good to Excellent





May 2012 Crop Production

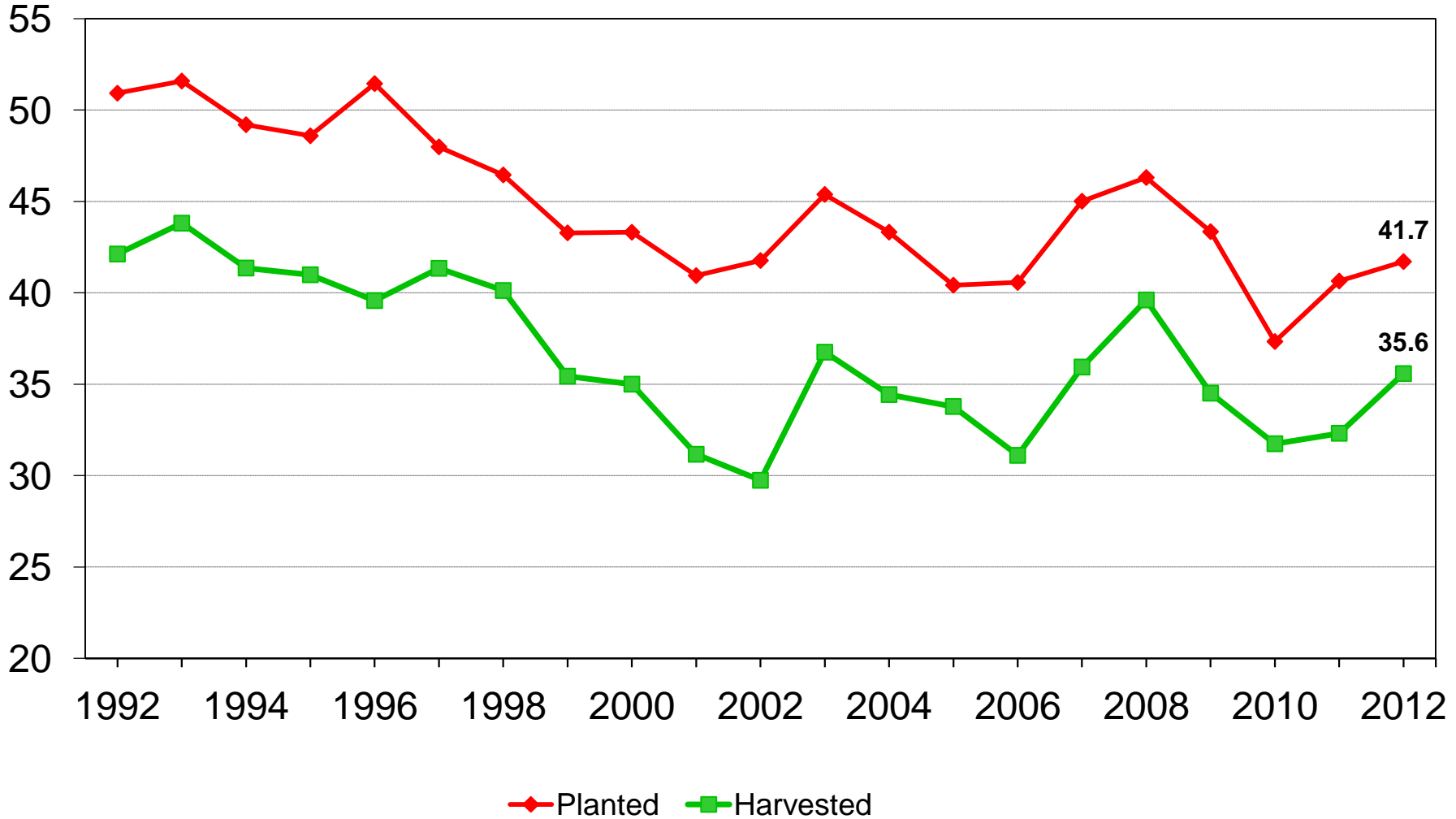
Crop	Unit	May 2012	% Change from Prev Season
Winter Wheat			
Harvested	Mil Ac	35.6	+ 10.1
Yield	Bu/Ac	47.6	+ 3.0
Production	Bil Bu	1.69	+ 13.4



U.S. Winter Wheat Acres



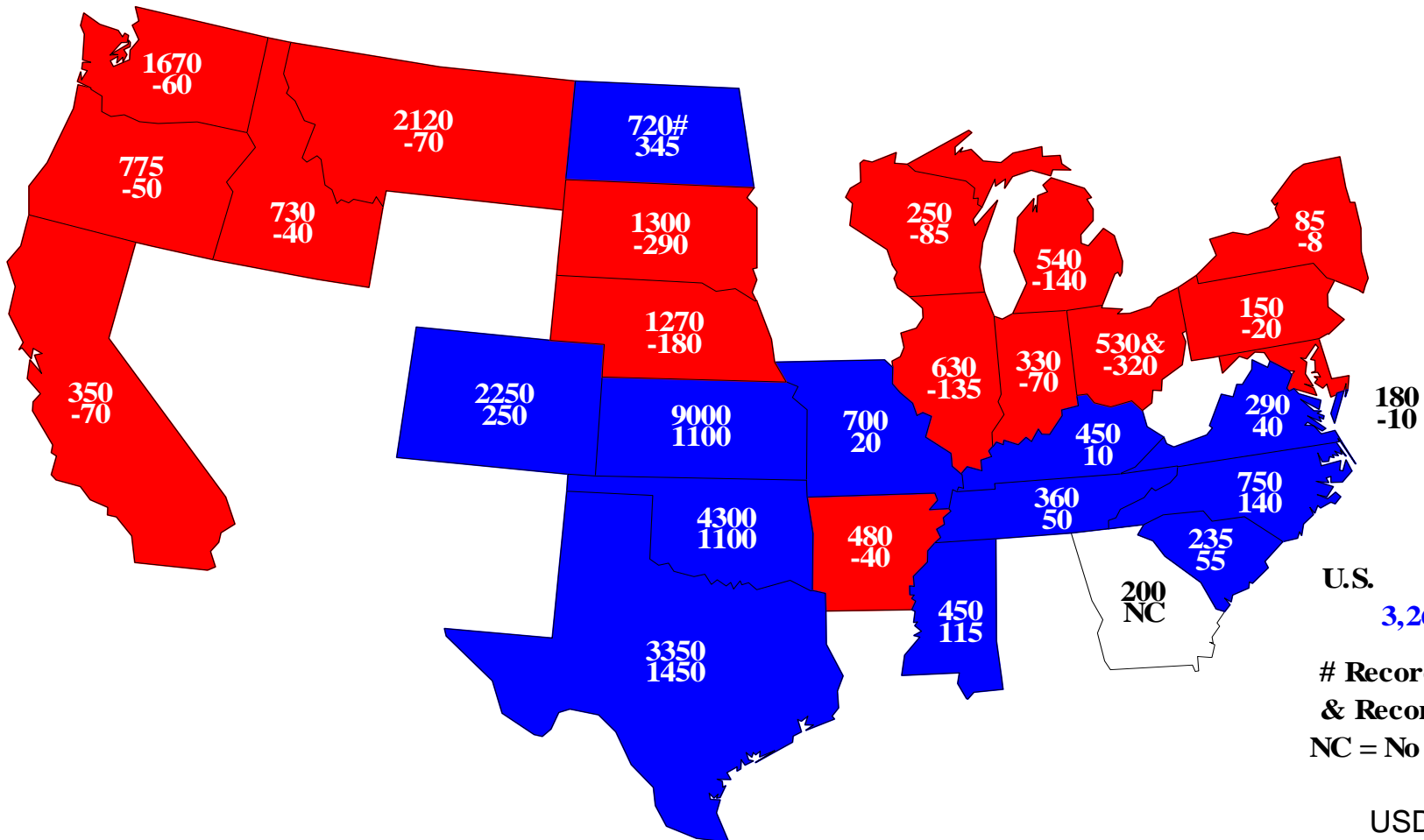
Million acres





Winter Wheat Harvested, 2012

Acres(000) and Change From Previous Year



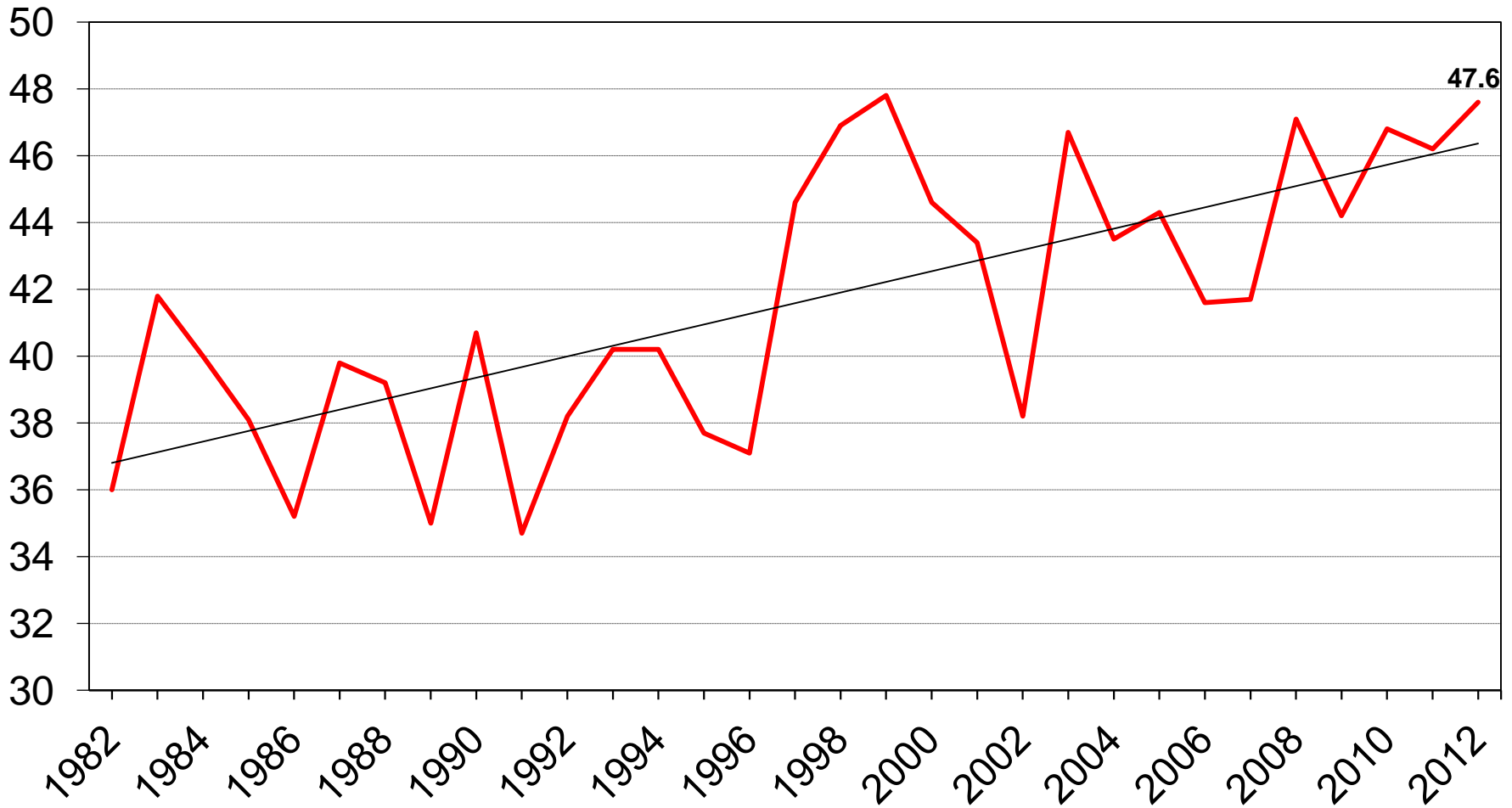
U.S. 35,580
3,266
Record High
& Record Low
NC = No Change



U.S. Winter Wheat Yield



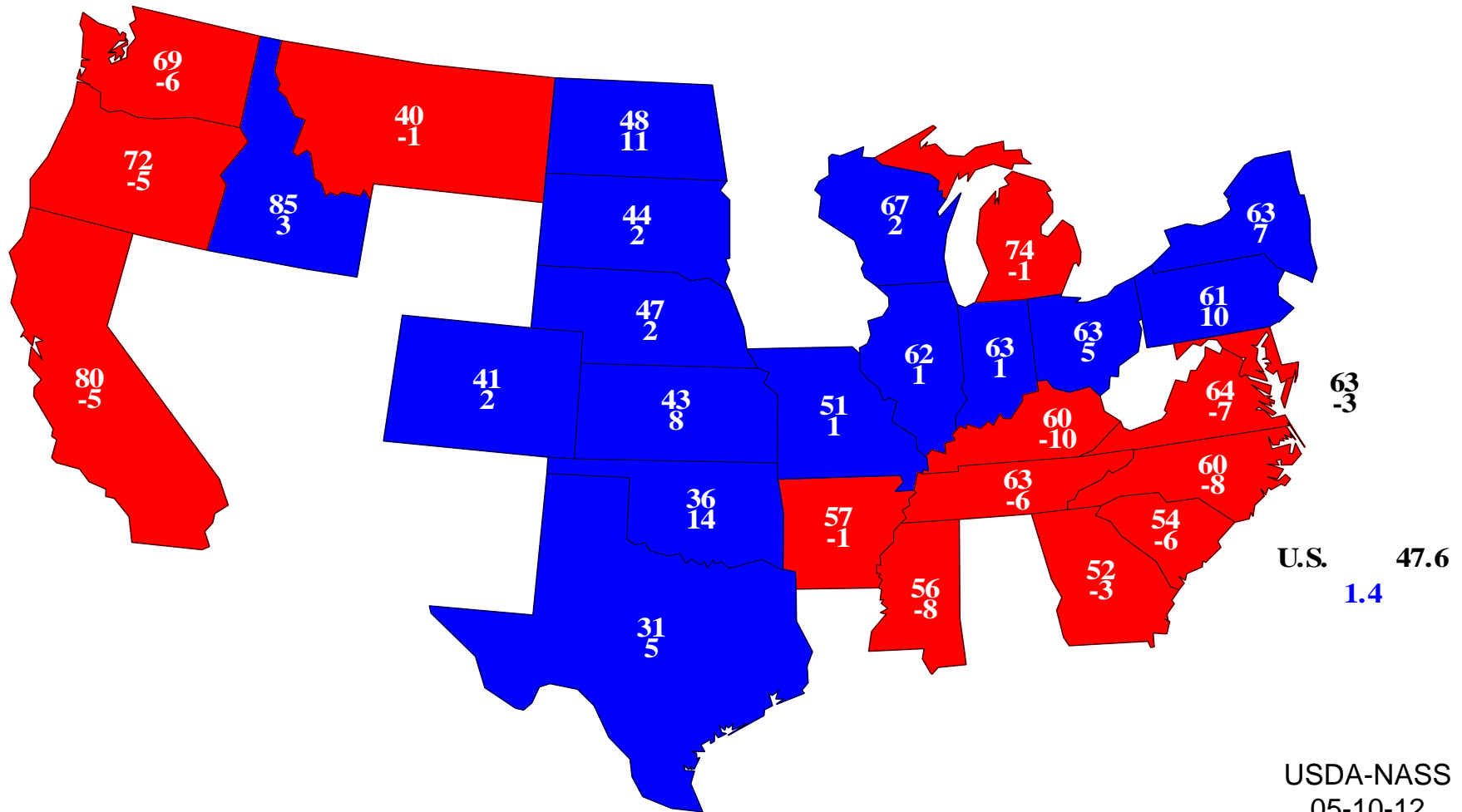
Bushels/acre





Winter Wheat Yield - May 1, 2012

Bushels and Change From Previous Year

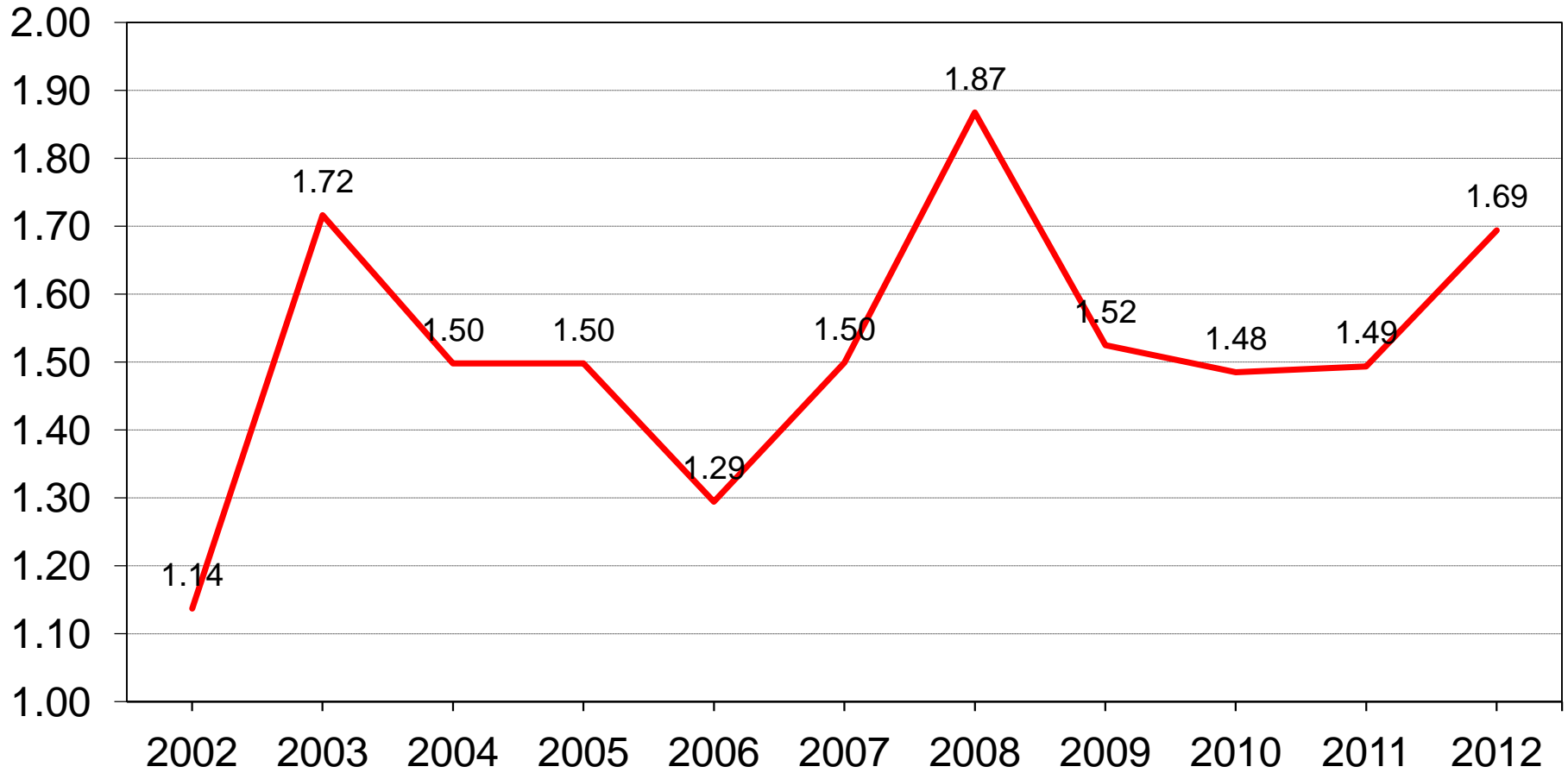




U.S. Winter Wheat Production



Billion bushels





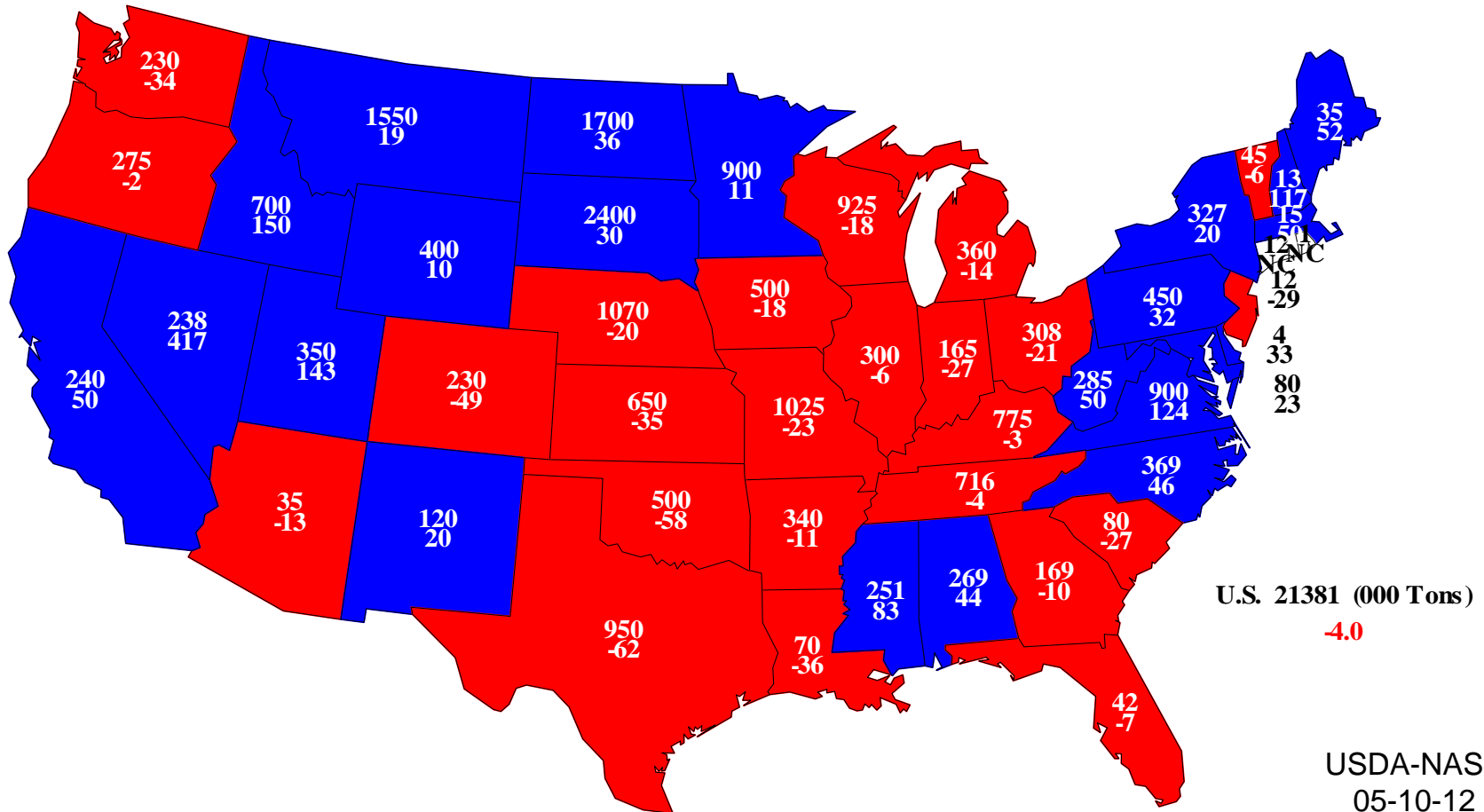
May 2012 Crop Production

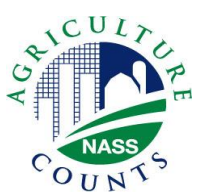
Crop	Unit	May 2012	% Change from Prev Season
Hay Stocks	Mil Tons	21.4	- 3.8



2012 All Hay Stocks

Stocks (000) and Percent Change From Previous Year





May 2012 Crop Production

Crop	Unit	May 2012	% Change from Prev Forecast	% Change from Prev Season
Oranges	Mil Tons	8.91	+ 0.1	+ <0.1
Grapefruit	Mil Tons	1.15	NC	- 9.3
Tangerines and Mandarins	Thou Tons	604	NC	- 4.0
Tangelos	Thou Tons	52.0	NC	NC



May 2012 Crop Production

Crop	Unit	May 2012	% Change from Prev Forecast	% Change from Prev Season
Almonds	Bil Lbs	2.00	---	- 1.5
Potatoes Spring	Mil Cwt	27.7	+ 2.0	+ 8.5



May 2012 Crop Production

Crop	Unit	May 2012	% Change from Prev Estimate	% Change from Prev Season
Cotton, All (2011)				
Planted	Mil Ac	14.7	+ <0.1	+ 34.3
Harvested	Mil Ac	9.46	- 2.9	- 11.6
Yield	Lbs/Ac	790	+ 2.3	- 2.7
Production	Mil Bales	15.6	- 0.6	- 14.0
Tobacco, All (2011)				
Harvested	Thou Ac	325	+ <0.1	- 3.7
Yield	Lbs/Ac	1,841	- 0.5	- 13.5
Production	Mil Lbs	598	- 0.5	- 16.7



United States Department of Agriculture
National Agricultural Statistics Service

Upcoming Reports

May 31	Agricultural Prices
June 12	Crop Production
June 28	Agricultural Prices
June 29	Acreage Grain Stocks Rice Stocks Quarterly Hogs and Pigs



United States Department of Agriculture
National Agricultural Statistics Service



All Reports Available At

www.nass.usda.gov

For Questions

202-720-2127

800-727-9540

nass@nass.usda.gov