



United States Department of Agriculture  
**National Agricultural Statistics Service**

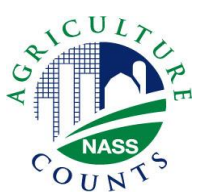
---

---

**SEPTEMBER CROP PRODUCTION**  
Executive Summary

September 12, 2012

8:30 AM



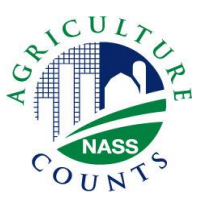
# Contents

Field Crops	Fruits/Nuts	Specialty Crops
Corn	Navel Oranges	Tobacco
Soybeans	Hazelnuts	Sugarbeets
Cotton	Walnuts	Sugarcane
Rice		Summer Potatoes
Peanuts		
Sorghum		



# Survey Overview

	<b>Ag Yield</b>	<b>Objective Yield</b>
Survey Type	Farmer Reported	Field Measurement
Crops Included	Field Crops	Corn, Soybeans, Cotton
Sample Size	~ 13,000	
Collection Period	Aug 28 – Sep 7	Aug 25 – Sep 1

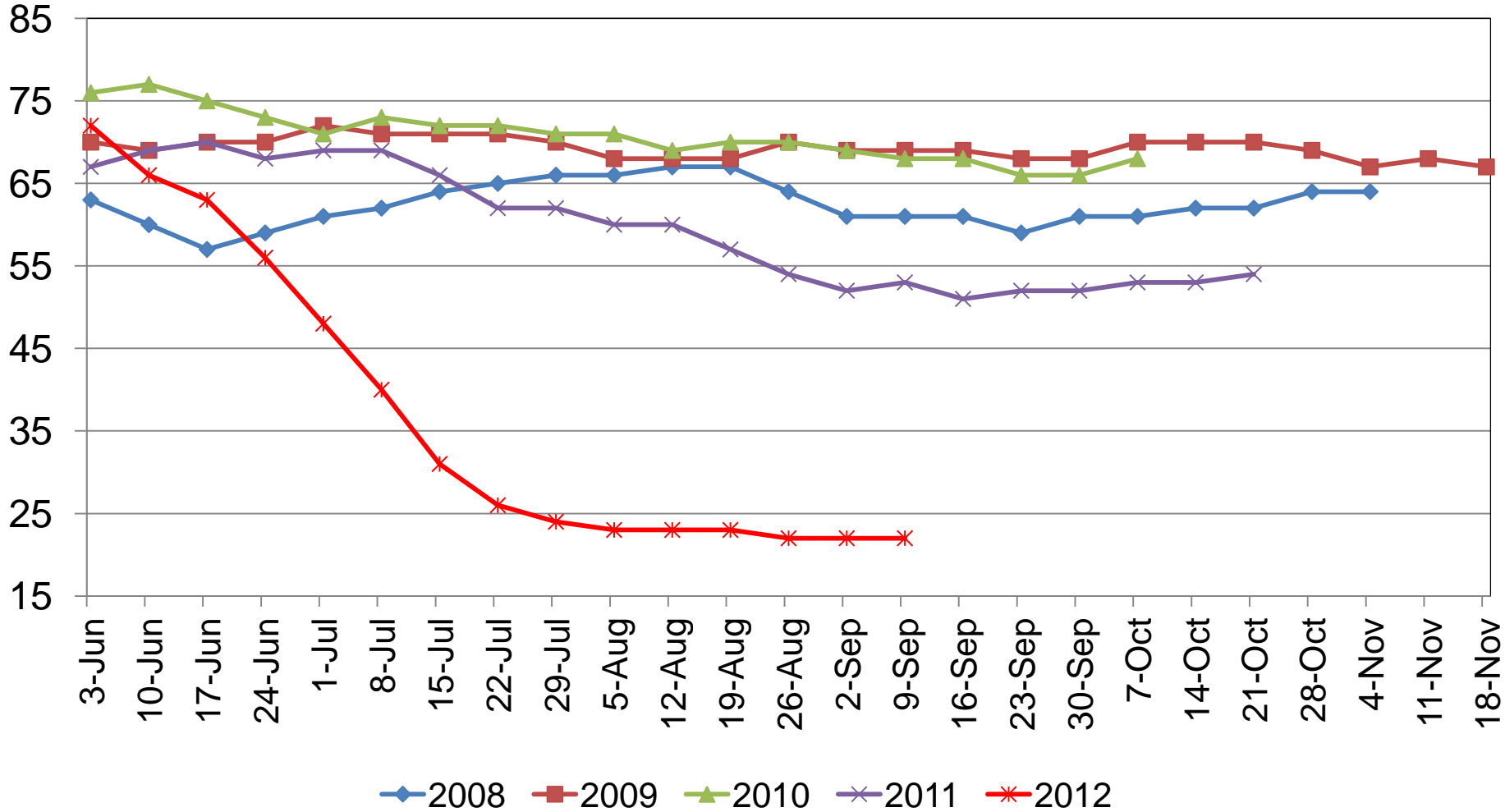


# Corn Condition

## Percent Rated Good to Excellent



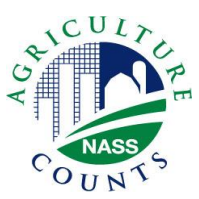
Percent





# September 2012 Crop Production

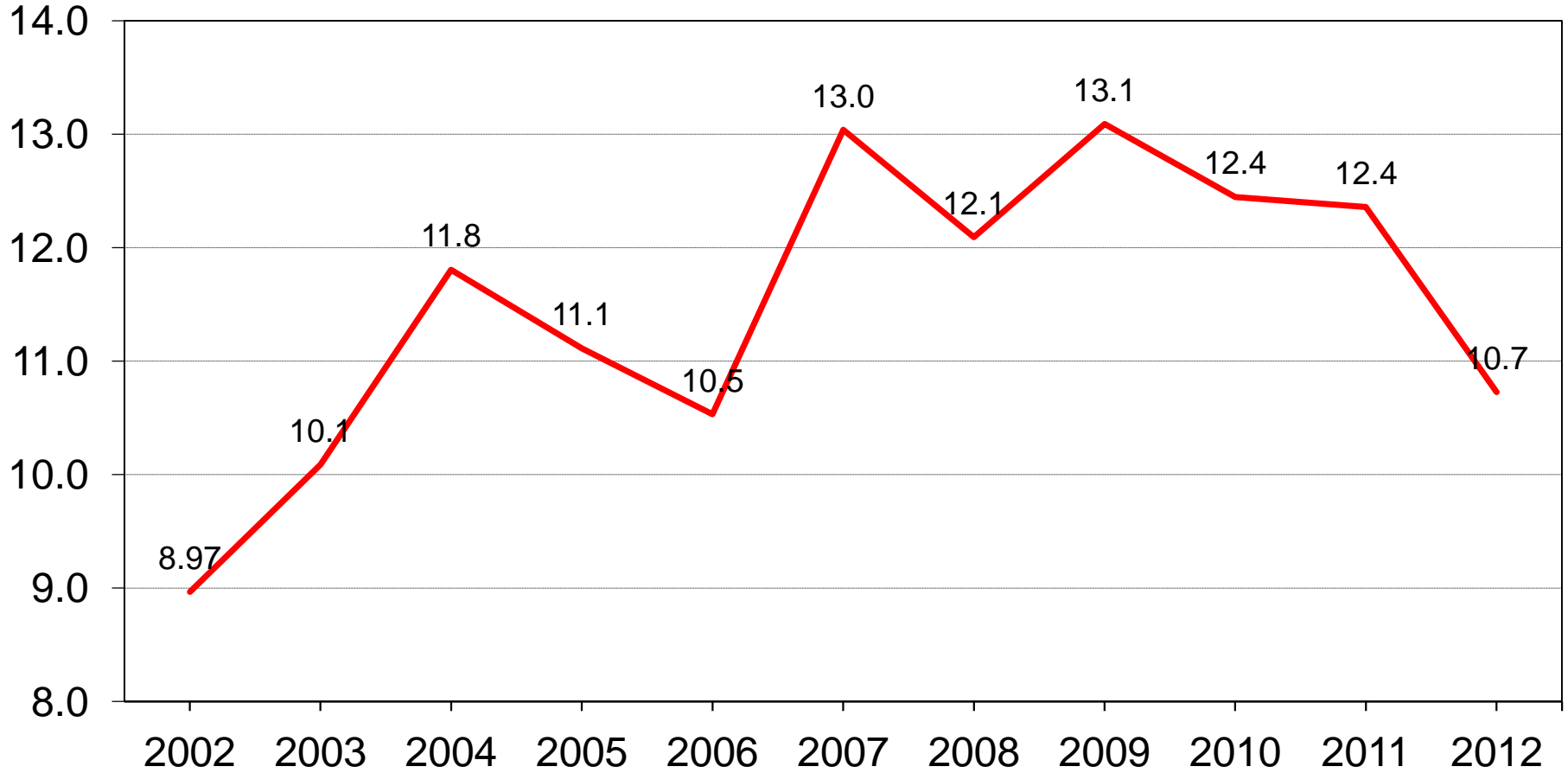
Crop	Unit	September 2012	% Change from Previous Forecast	% Change from Previous Season
<b>Corn</b>				
Harvested	Mil Ac	87.4	NC	+ 4.0
Yield	Bu/Ac	122.8	- 0.5	- 16.6
Production	Bil Bu	10.7	- 0.5	- 13.2



# U.S. Corn Production



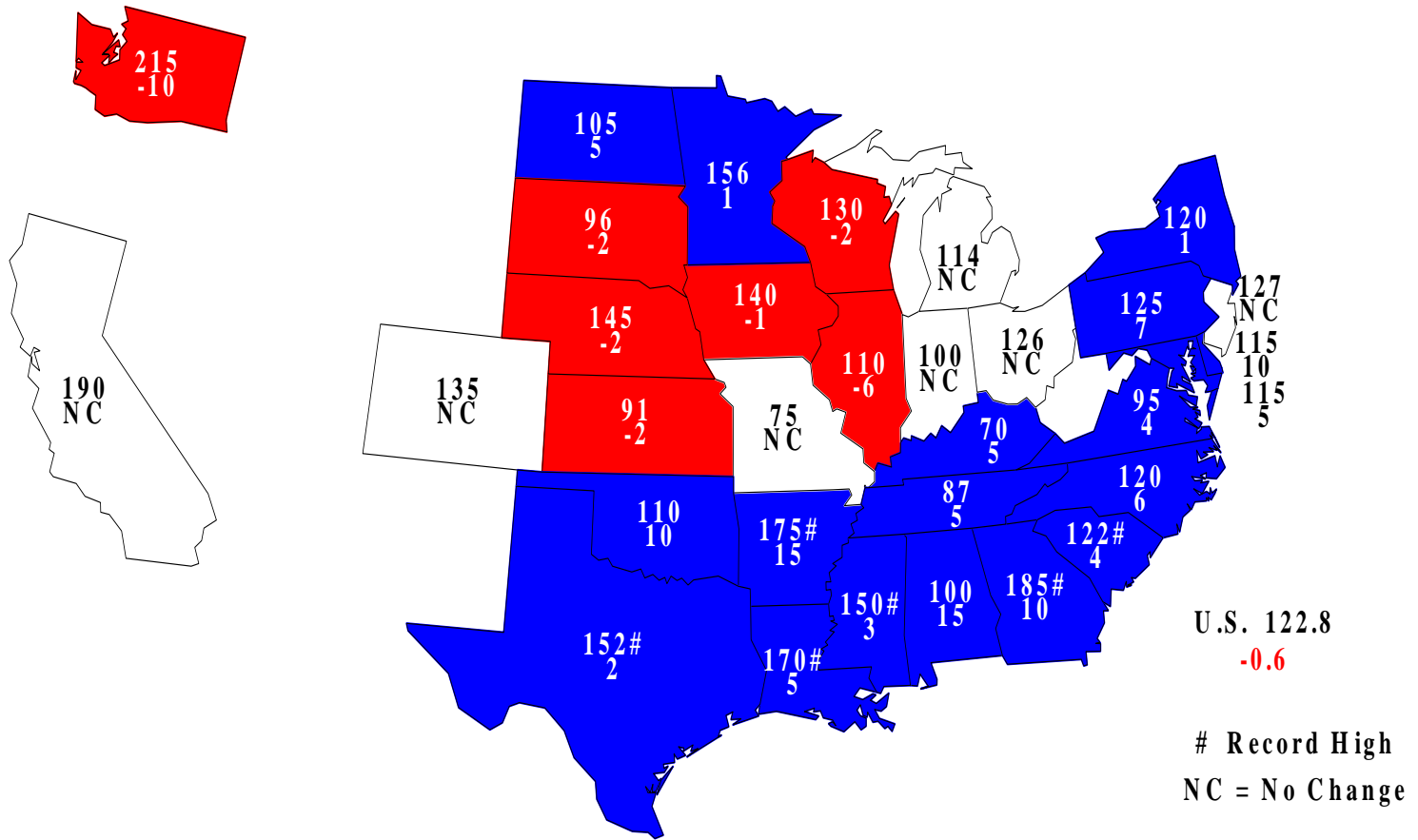
Billion bushels

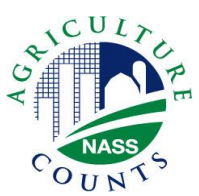




# Corn for Grain Yields, September 1, 2012

## Bushels and Change From August

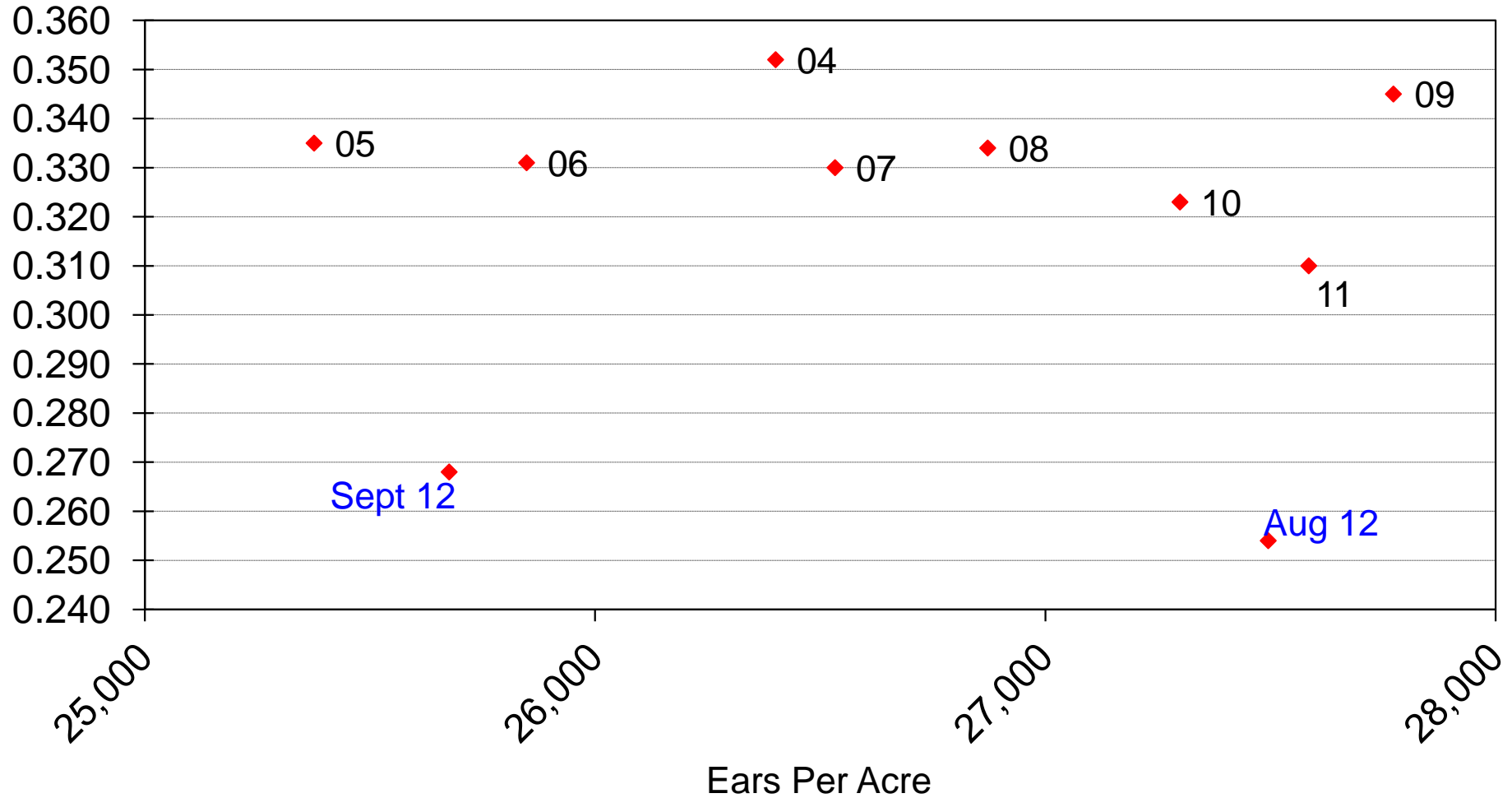




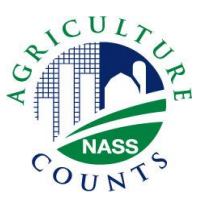
# Corn Objective Yield Region Derived Grain Weight vs Ears per Acre



Lbs/Ear





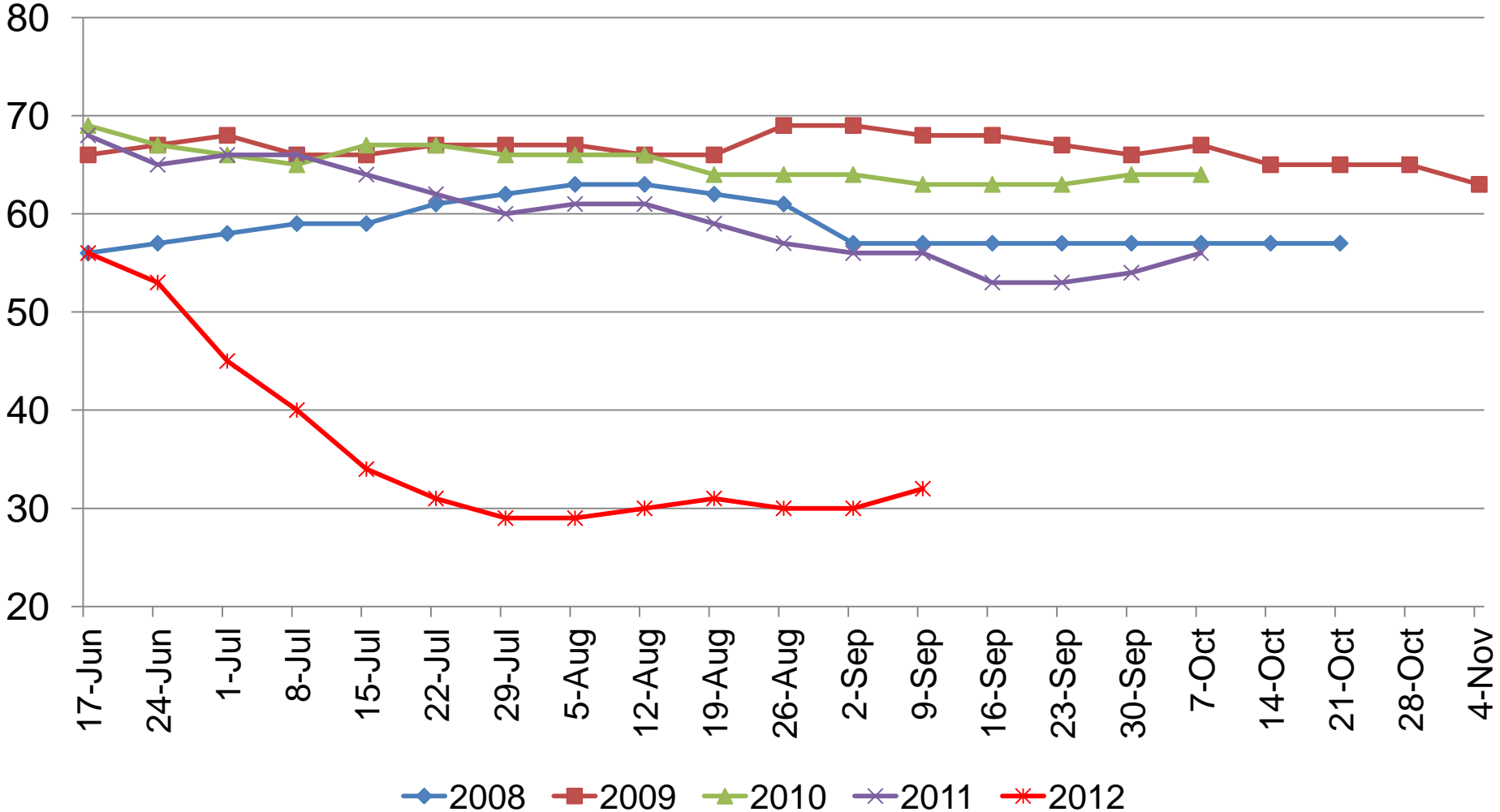


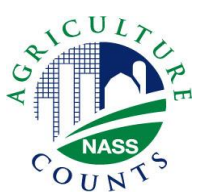
# Soybean Condition

## Percent Rated Good to Excellent



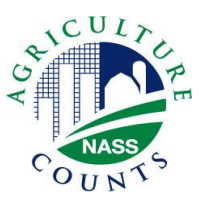
Percent





# September 2012 Crop Production

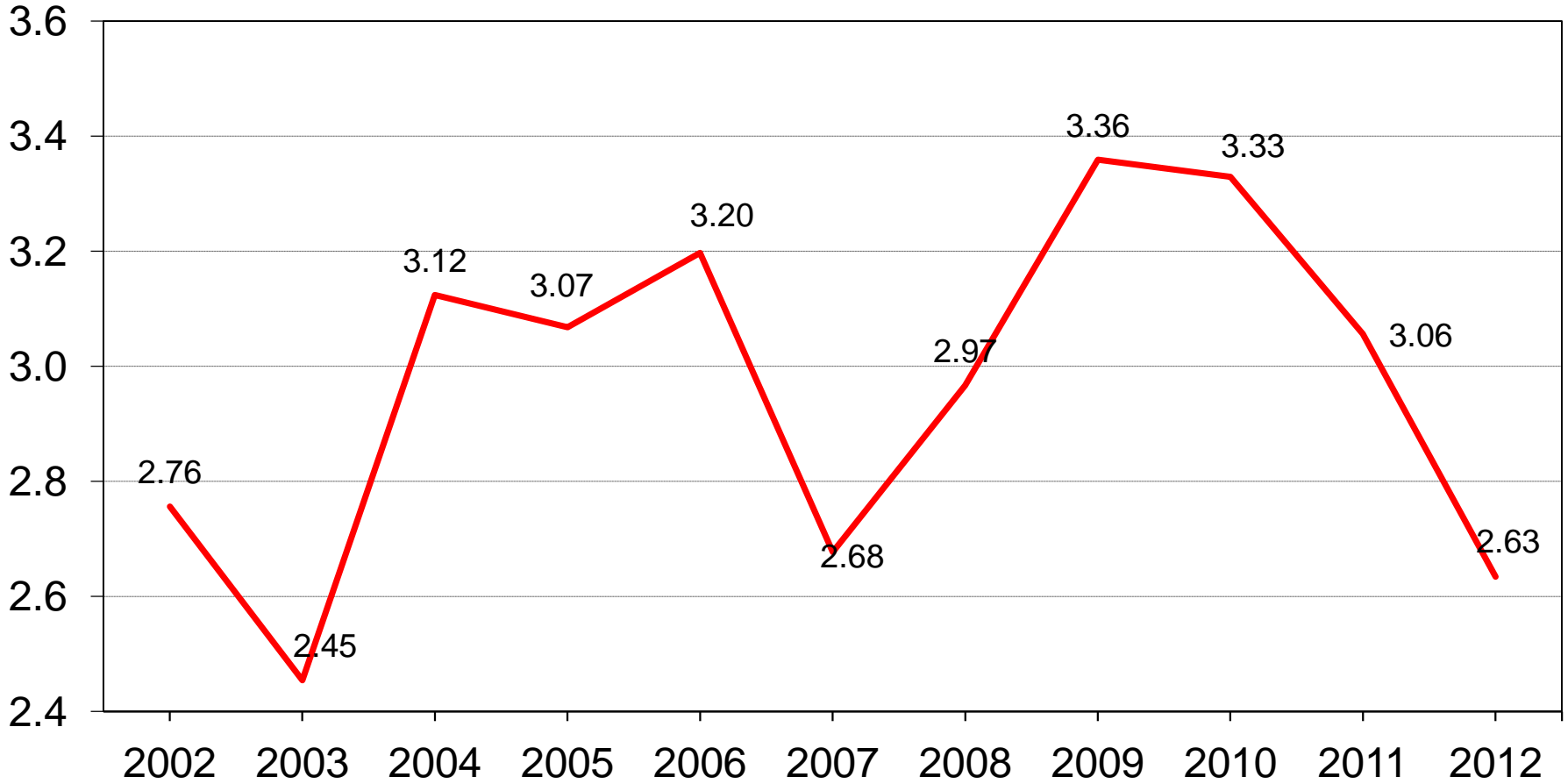
Crop	Unit	September 2012	% Change from Previous Forecast	% Change from Previous Season
<b>Soybeans</b>				
Harvested	Mil Ac	74.6	NC	+ 1.4
Yield	Bu/Ac	35.3	- 2.2	- 14.9
Production	Bil Bu	2.63	- 2.1	- 13.8



# U.S. Soybean Production



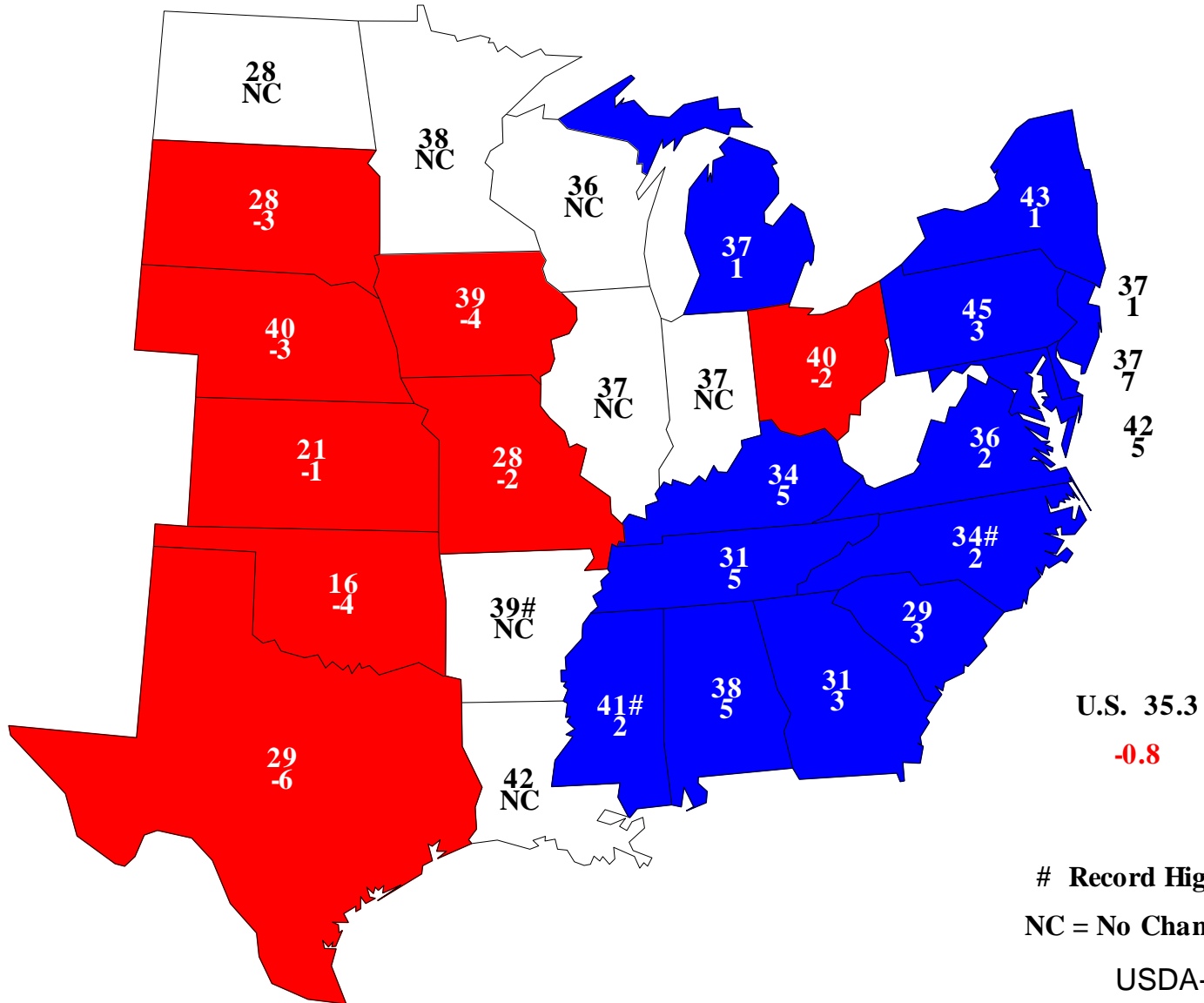
Billion bushels

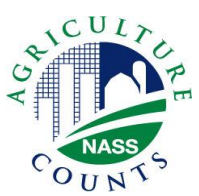




# Soybean Yields, September 1, 2012

## Bushels and Change From Previous Month

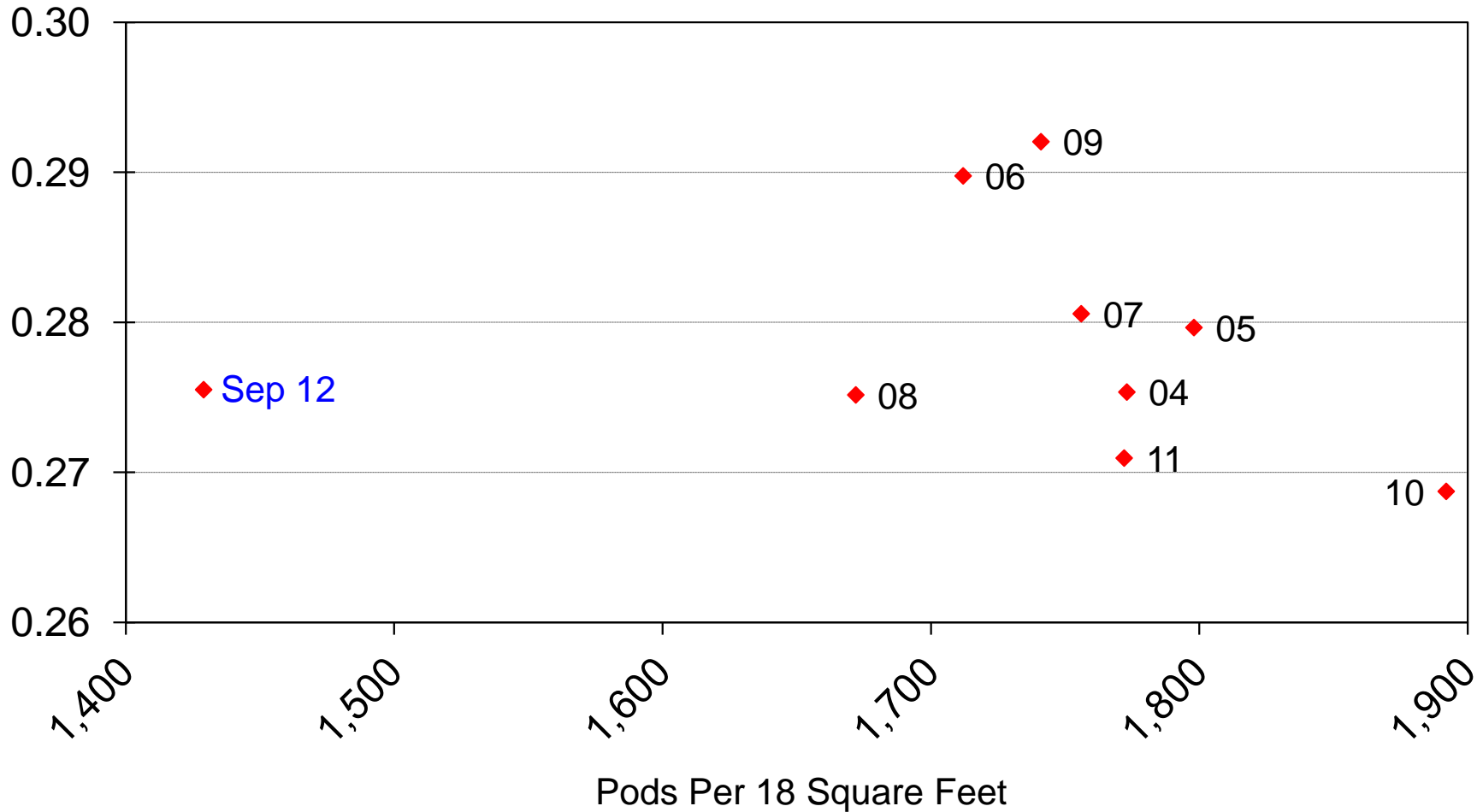


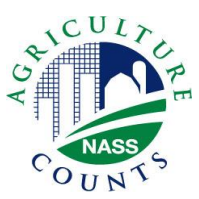


# Soybean Objective Yield Region Derived Pod Weight vs Pod Count



Grams/Pod



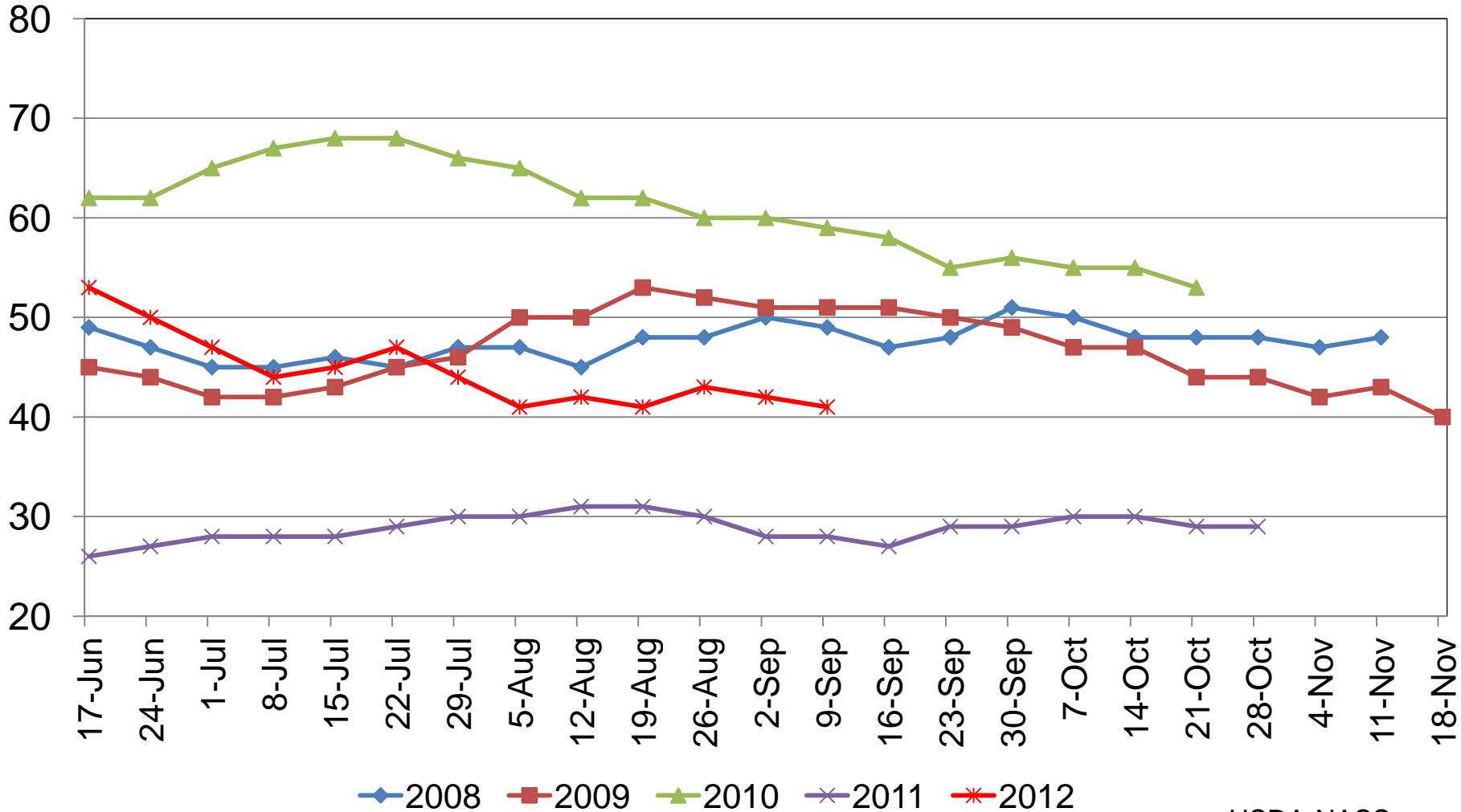


# Cotton Condition

## Percent Rated Good to Excellent



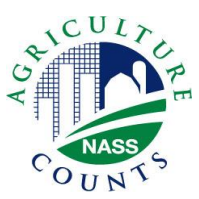
Percent





# September 2012 Crop Production

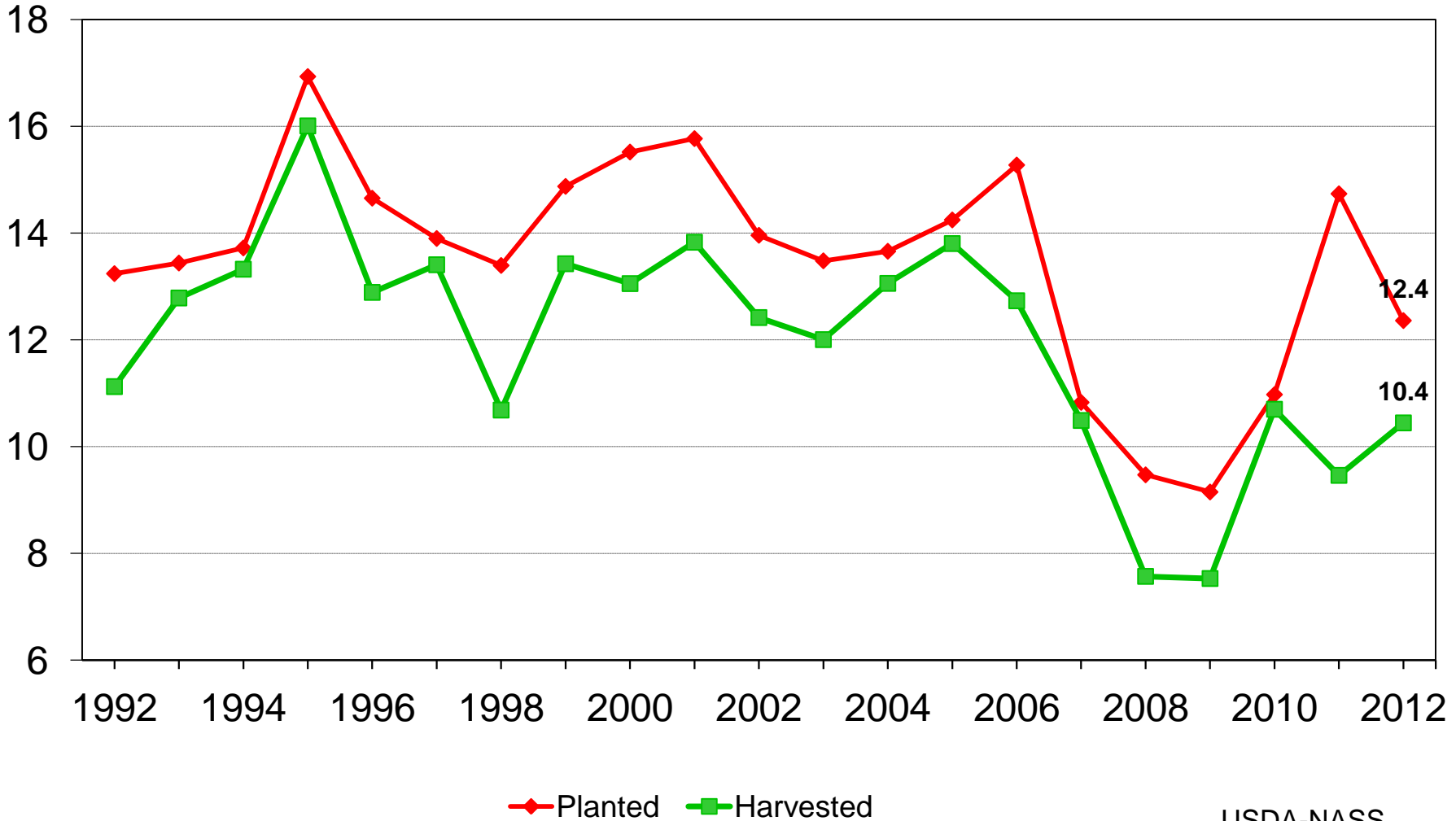
Crop	Unit	September 2012	% Change from Previous Forecast	% Change from Previous Season
<b>Cotton</b>				
Planted	Mil Ac	12.4	- 2.2	- 16.1
Harvested	Mil Ac	10.4	- 3.4	+ 10.4
Yield	Lbs/Ac	786	+ 0.3	- 0.5
Production	Mil Bales	17.1	- 3.1	+ 9.9



# U.S. All Cotton Acres



Million acres



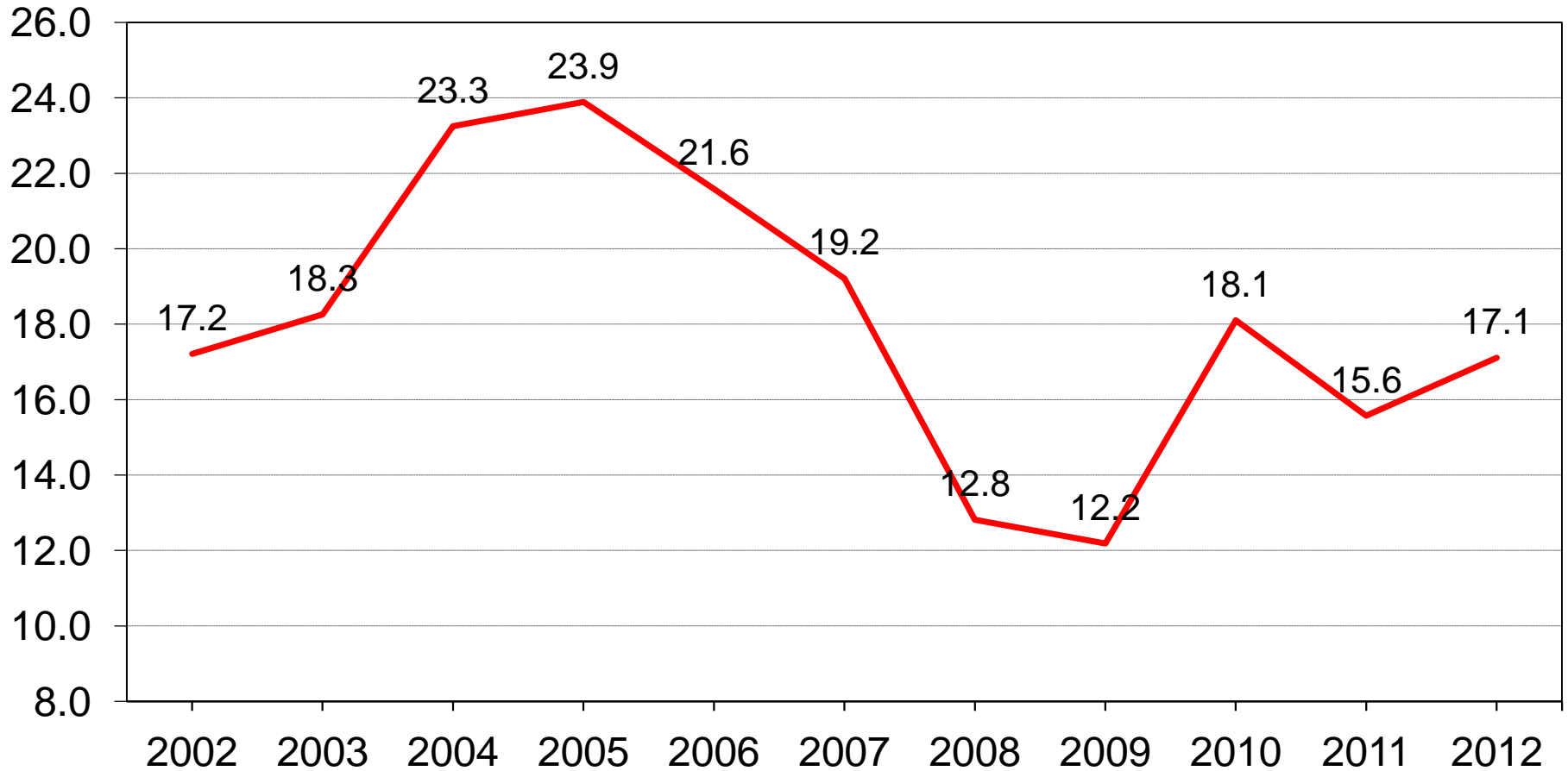




# U.S. All Cotton Production



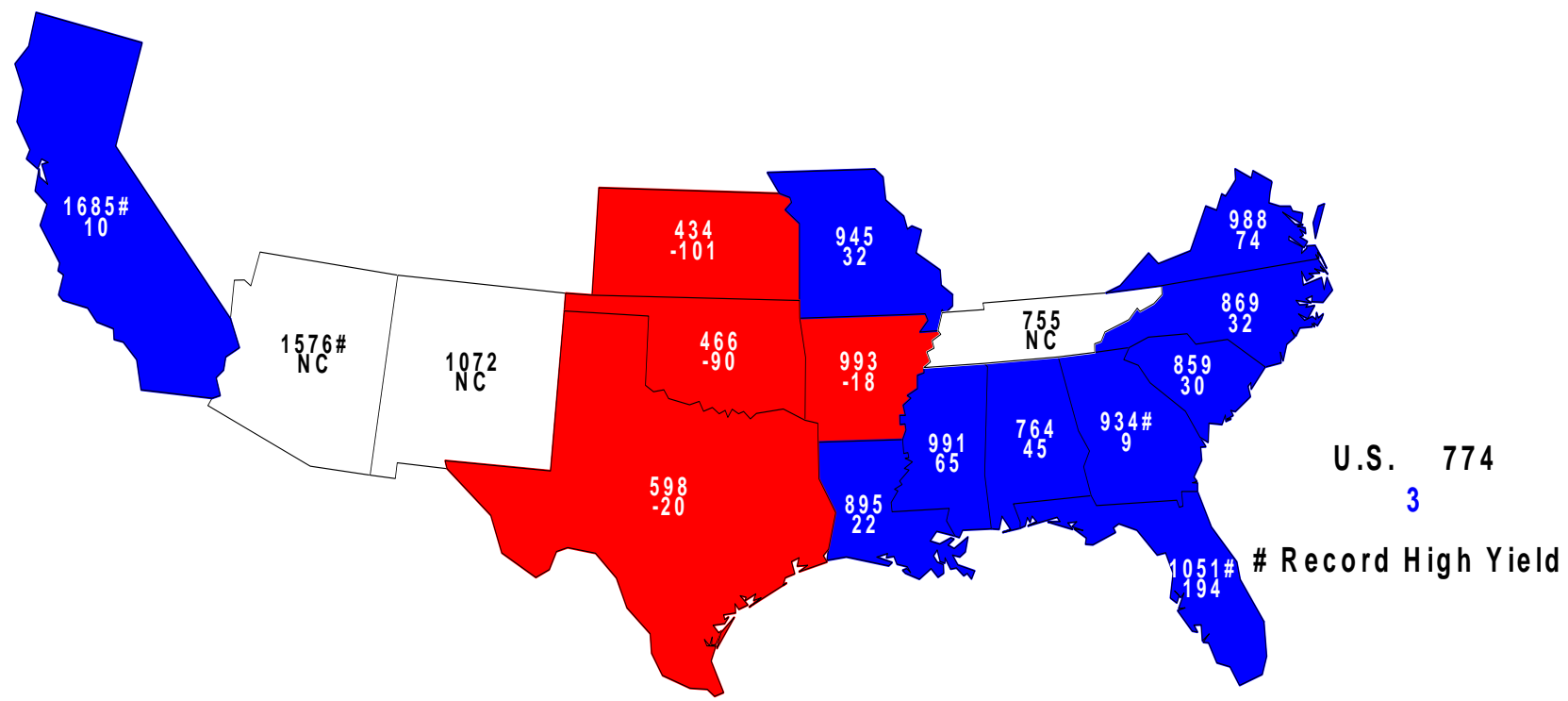
Million bales

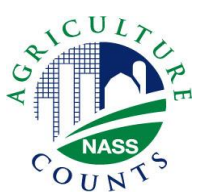




# Upland Cotton Yield, September 1, 2012

## Pounds and Change From Previous Month





# September 2012 Crop Production

<b>Crop</b>	<b>Unit</b>	<b>September 2012</b>	<b>% Change from Previous Forecast</b>	<b>% Change from Previous Season</b>
<b>Rice</b>				
<b>Planted</b>	<b>Mil Ac</b>	<b>2.70</b>	<b>+ 1.4</b>	<b>+ 0.4</b>
<b>Harvested</b>	<b>Mil Ac</b>	<b>2.68</b>	<b>+ 1.4</b>	<b>+ 2.3</b>
<b>Yield</b>	<b>Lbs/Ac</b>	<b>7,334</b>	<b>+ 1.9</b>	<b>+ 3.8</b>
<b>Production</b>	<b>Mil Cwt</b>	<b>196</b>	<b>+ 3.3</b>	<b>+ 6.1</b>



# September 2012 Crop Production

<b>Crop</b>	<b>Unit</b>	<b>September 2012</b>	<b>% Change from Previous Forecast</b>	<b>% Change from Previous Season</b>
<b>Peanuts</b>				
<b>Planted</b>	<b>Mil Ac</b>	<b>1.64</b>	<b>+ 7.2</b>	<b>+ 43.4</b>
<b>Harvested</b>	<b>Mil Ac</b>	<b>1.59</b>	<b>+ 7.3</b>	<b>+ 45.2</b>
<b>Yield</b>	<b>Lbs/Ac</b>	<b>3,714</b>	<b>+ 4.3</b>	<b>+ 12.1</b>
<b>Production</b>	<b>Bil Lbs</b>	<b>5.92</b>	<b>+ 11.8</b>	<b>+ 62.8</b>



# September 2012 Crop Production

Crop	Unit	September 2012	% Change from Previous Forecast	% Change from Previous Season
Sorghum	Mil Bu	246	- 0.6	+ 14.7
All Tobacco	Mil Lbs	766	+ 8.3	+ 28.0
Sugarbeets	Mil Tons	35.6	+ 0.7	+ 23.4
Sugarcane	Mil Tons	31.0	- 1.1	+ 5.5
Summer Potatoes	Mil Cwt	17.4	+ 7.3	+ 34.6



# September 2012 Crop Production

Crop	Unit	September 2012	% Change from Previous Forecast	% Change from Previous Season
Navel Oranges (CA)	Mil Tons	1.86	---	+ 5.7
Hazelnuts (OR)	Thou Tons	40.0	---	+ 3.9
Walnuts (CA)	Thou Tons	470	---	+ 2.0



United States Department of Agriculture  
**National Agricultural Statistics Service**

---

---

## Upcoming Reports

September 20 Potato Annual Summary  
Citrus Annual Summary

September 30 Quarterly Hogs and Pigs  
Grain Stocks  
Small Grains Summary

October 11 Crop Production



United States Department of Agriculture  
**National Agricultural Statistics Service**

---

---



All Reports Available At

[www.nass.usda.gov](http://www.nass.usda.gov)

For Questions

202-720-2127

800-727-9540

[nass@nass.usda.gov](mailto:nass@nass.usda.gov)