



United States Department of Agriculture
National Agricultural Statistics Service

October Crop Production
Executive Summary

Lance Honig, Chief
Crops Branch



Contents

Field Crops	Fruit & Nuts	Specialty Crops
Corn	Citrus	Dry Beans
Soybeans	Pecans	Tobacco
Cotton		Sugarbeets
Rice		Sugarcane
Peanuts		
Sorghum		
Alfalfa Hay		
Other Hay		
Canola		
Sunflowers		



Survey Overview

Florida Citrus

	Tree Inventory	Limb Count	Objective Surveys (Size and Drop)	Fruit Maturity
Survey Type	Field Observations	Field Observations	Field Observations	Laboratory Tests
Crops Included	All	All	All	Oranges, Grapefruit
Sample Size	261,344 acres	3,288 groves	1,811 groves	425 samples
Collection Period	July 1, 2013 - July 11, 2014	July 13 – September 19	August 1 - September 26	October 1-3



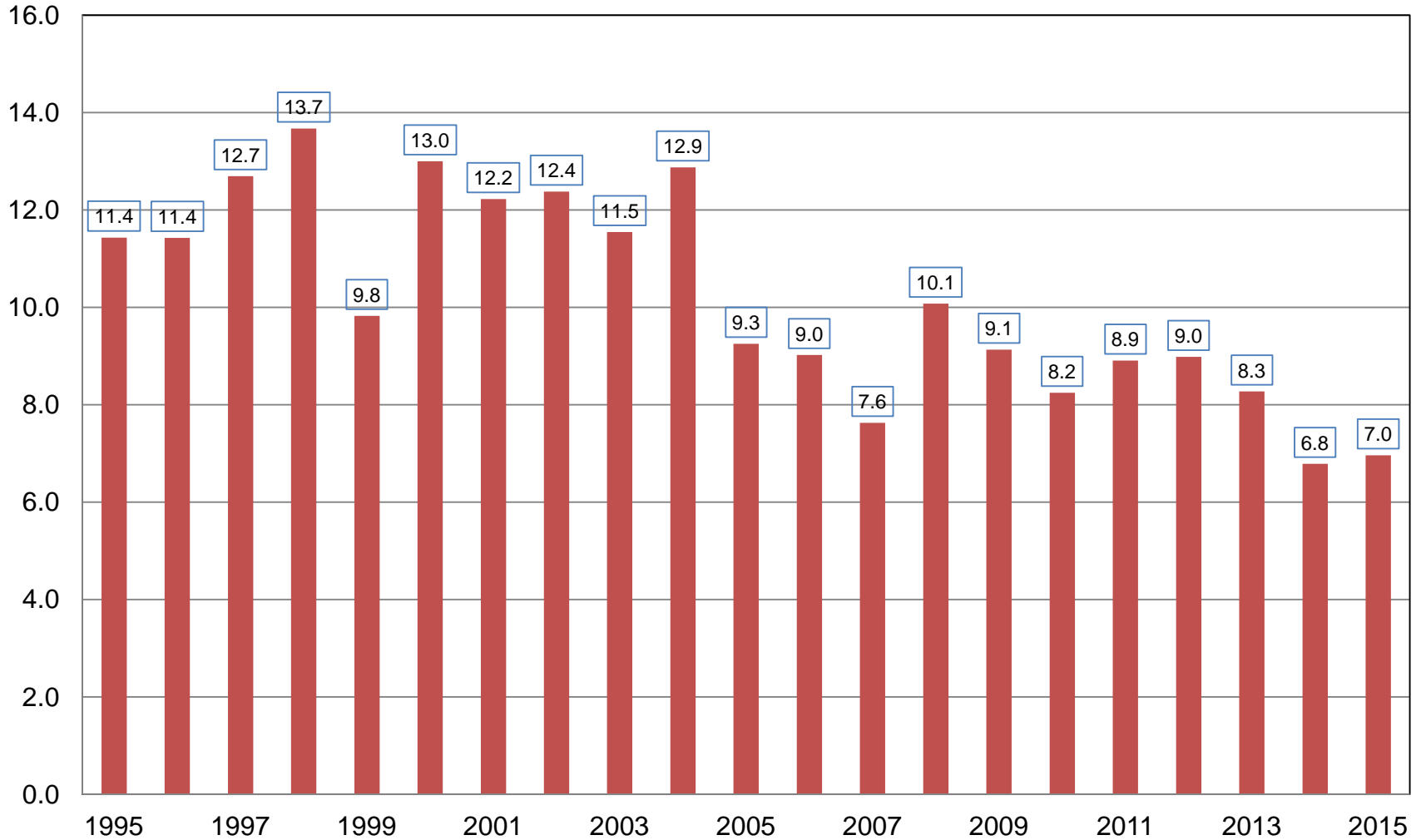
October 2014 Crop Production

Crop	Unit	October 2014	% Change From Previous Forecast	% Change From Previous Season
Production				
Oranges	Mil Tons	6.96	NA	+2.7
Grapefruit	Mil Tons	1.03	NA	-2.4
Lemons	Thou Tons	840	NA	+1.0
Tangelos	Thou Tons	41.0	NA	+2.5
Tangerines & Mandarins	Thou Tons	782	NA	+7.7



Orange Production United States

Million Tons





Survey Overview

	Ag Yield	Objective Yield
Survey Type	Farmer Reported	Field Measurement
Crops Included	Field Crops	Corn, Cotton, Soybeans
Sample Size	13,328	4,972
Collection Period	Sept 26 – Oct 6	Sept 24 – Oct 1



October 2014 Crop Production

Crop	Unit	October 2014	% Change From Previous Forecast	% Change From Previous Season
Planted				
Corn	Mil Ac	90.9	-0.8	-4.7
Soybeans	Mil Ac	84.2	-0.8	+9.6
Sorghum	Mil Ac	7.21	-3.5	-10.5
Sunflowers	Mil Ac	1.57	-7.7	-0.1
Canola	Mil Ac	1.71	-2.4	+27.0
Dry Edible Beans	Mil Ac	1.69	+1.0	+24.7



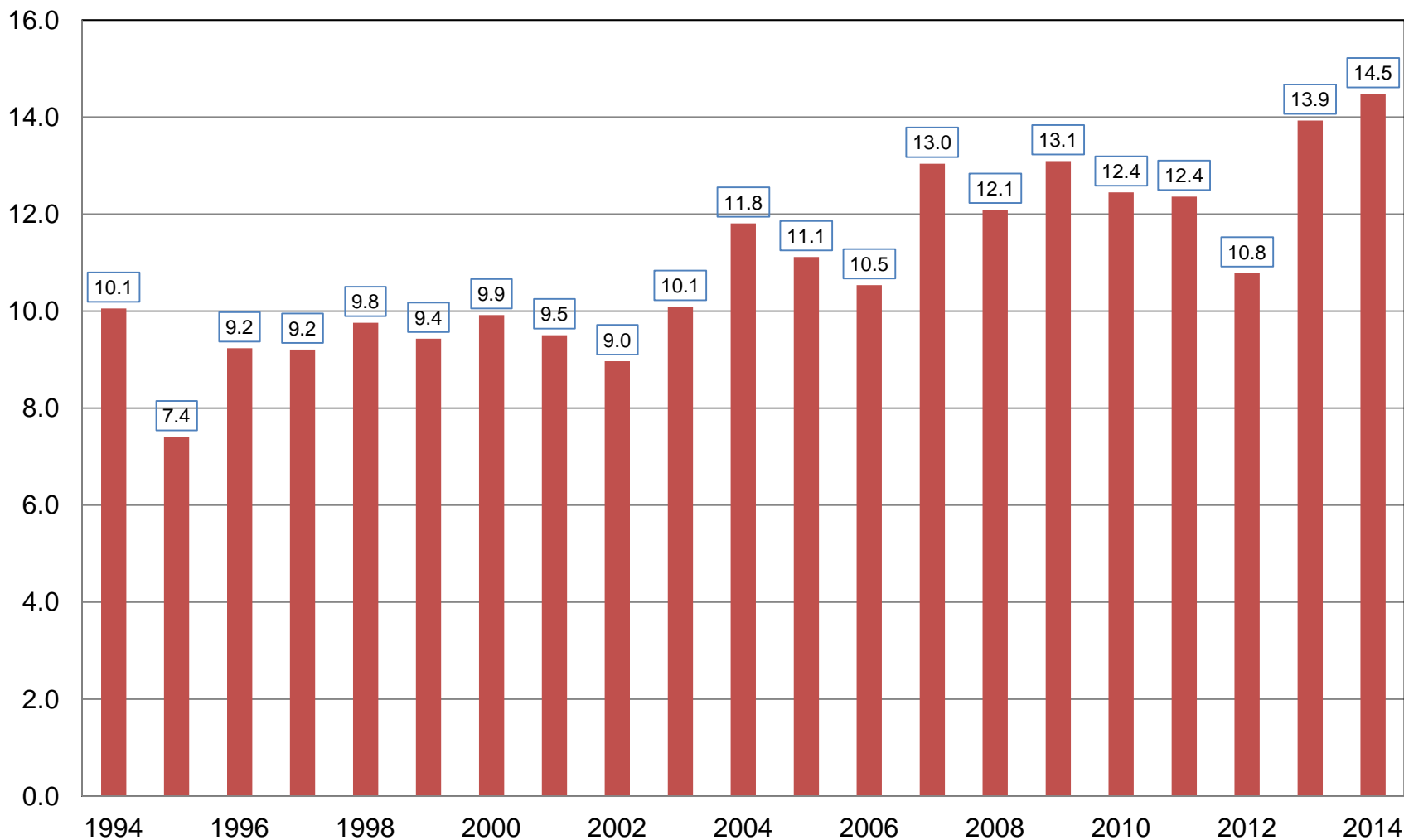
October 2014 Crop Production

Crop	Unit	October 2014	% Change From Previous Forecast	% Change From Previous Season
Corn				
Harvested	Mil Ac	83.1	-0.9	-5.2
Yield	Bu/Ac	174.2	+1.5	+9.7
Production	Bil Bu	14.5	+0.6	+4.0



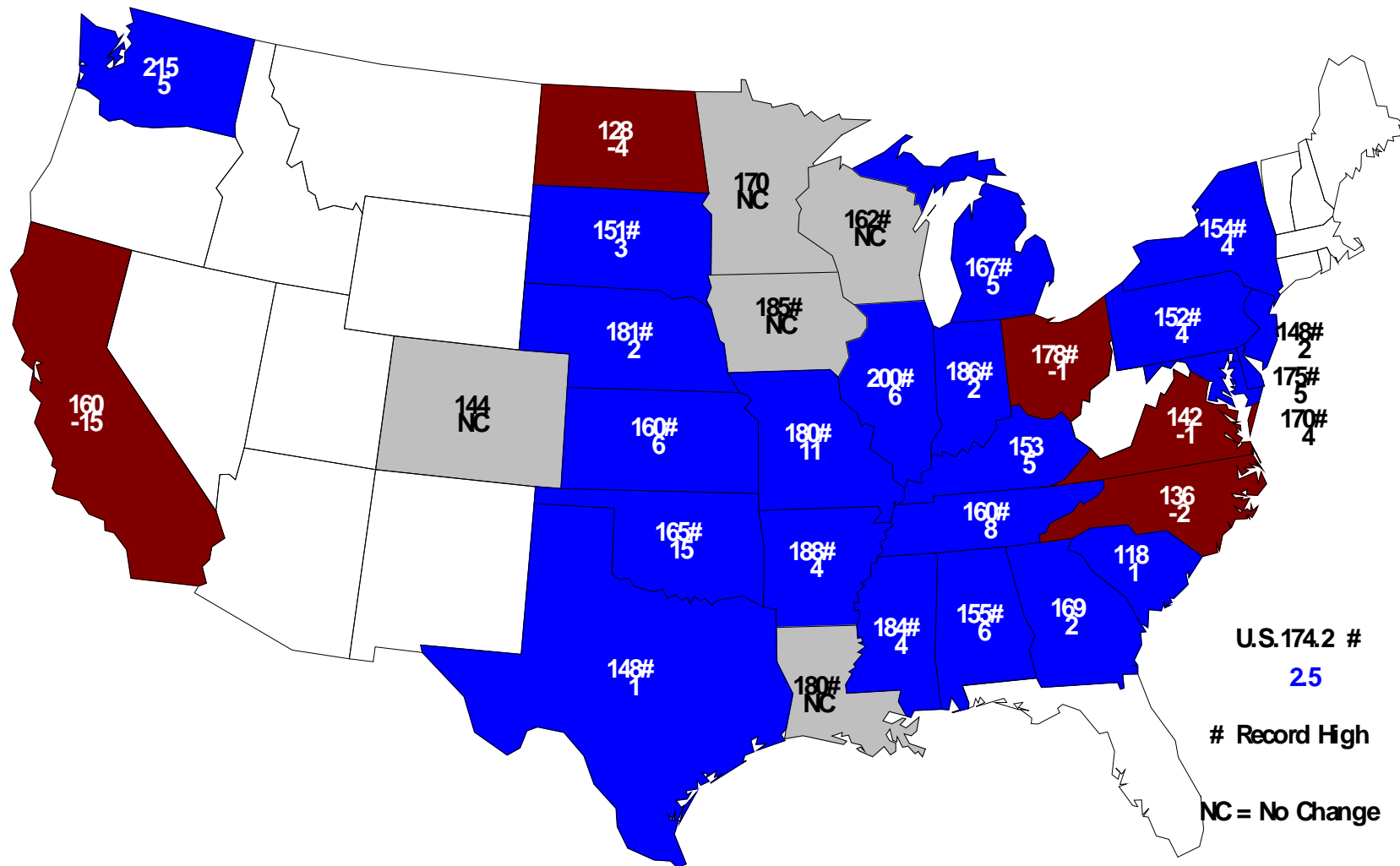
Corn for Grain Production United States

Billion Bushels



October 1, 2014 Corn Yield

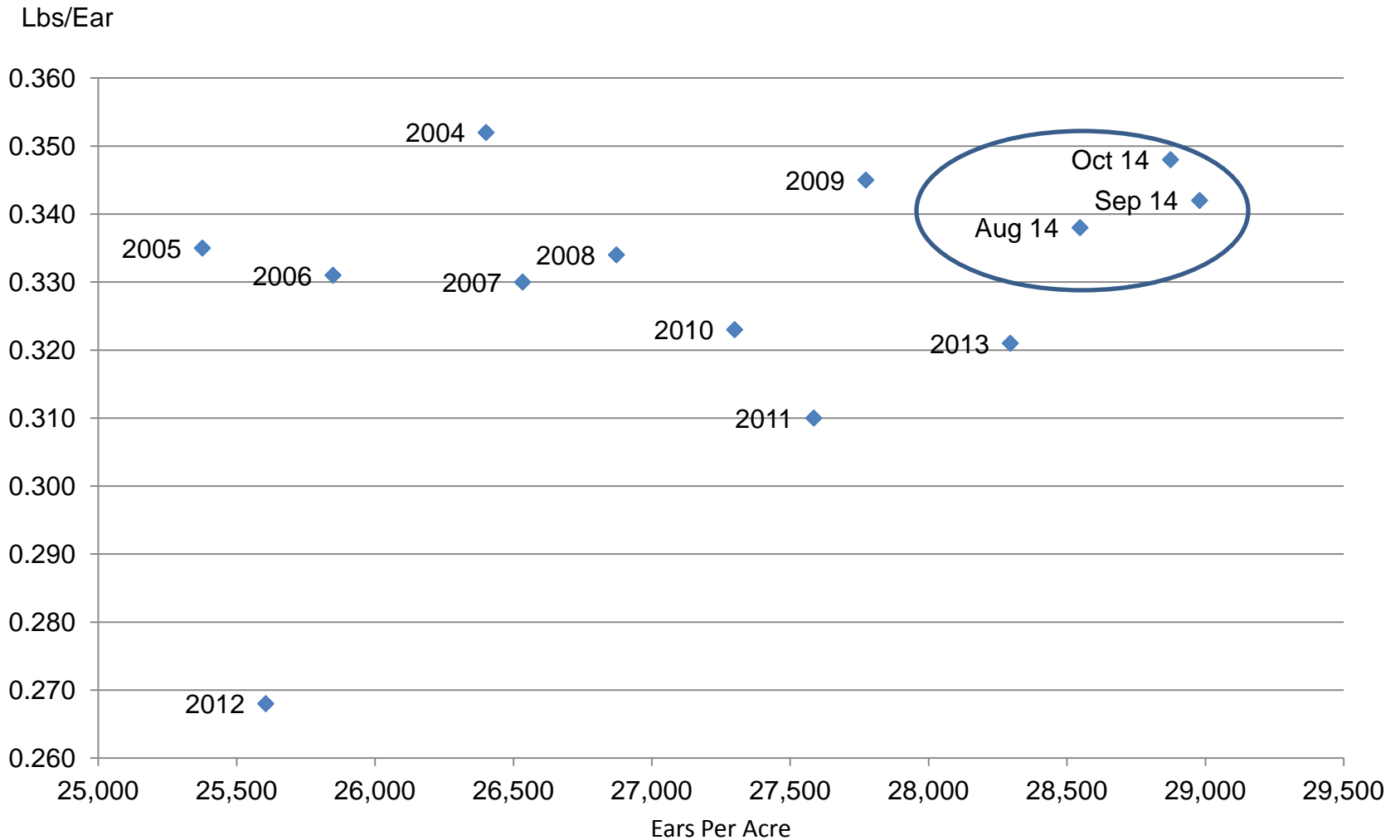
Bushels and Change From Previous Month





Corn Objective Yield Region

Ears Per Acre vs. Implied Ear Weight



Implied Ear Weight = (Published Yield * 56) / Ears



Corn Objective Yield - October

Percent of Samples Processed in the Lab

Year	Dent Stage	Mature
	<i>Percent</i>	
2010	7	82
2011	24	57
2012	3	90
2013	NA	NA
2014	39	53



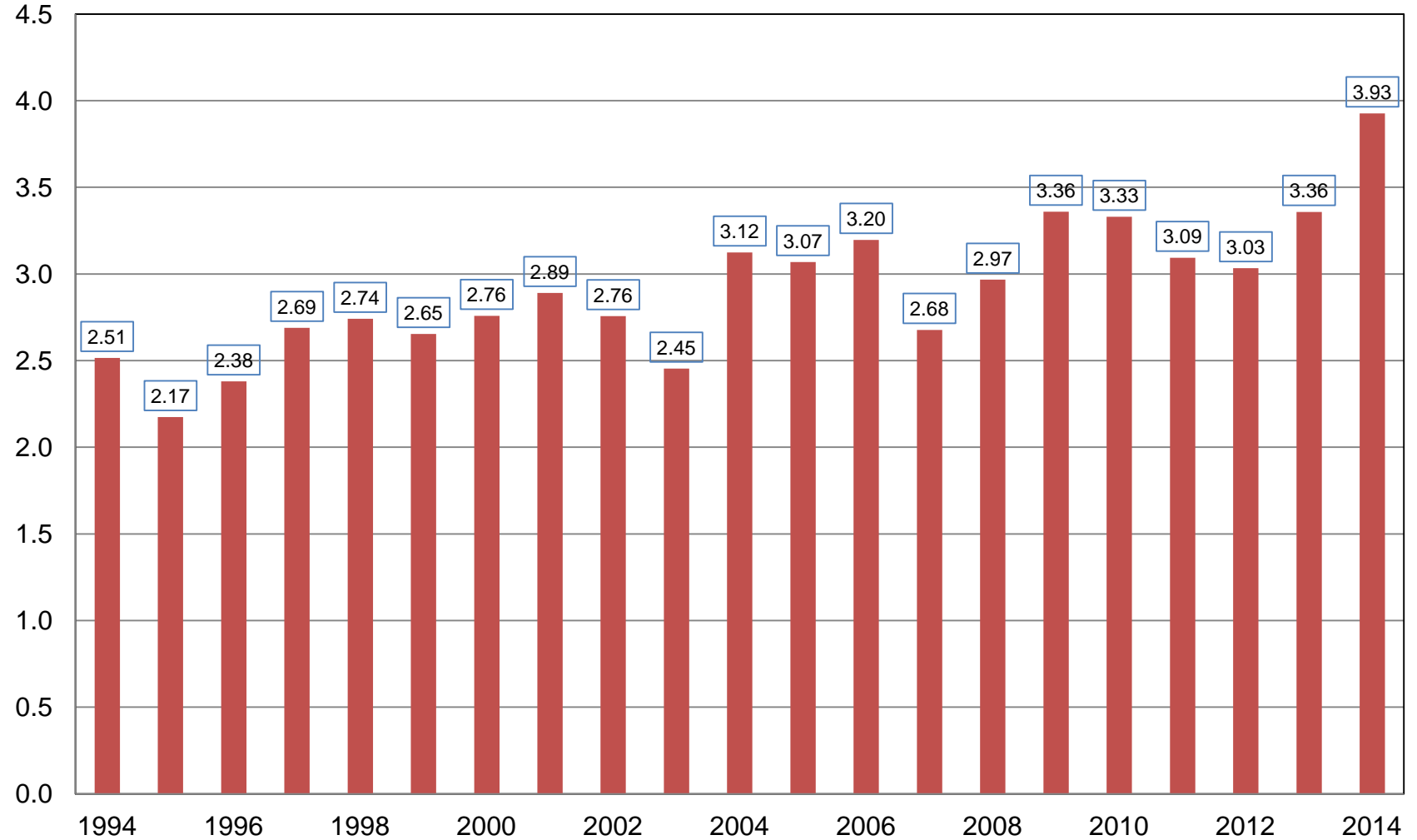
October 2014 Crop Production

Crop	Unit	October 2014	% Change From Previous Forecast	% Change From Previous Season
Soybeans				
Harvested	Mil Ac	83.4	-0.8	+9.4
Yield	Bu/Ac	47.1	+1.1	+7.0
Production	Bil Bu	3.93	+0.4	+16.9



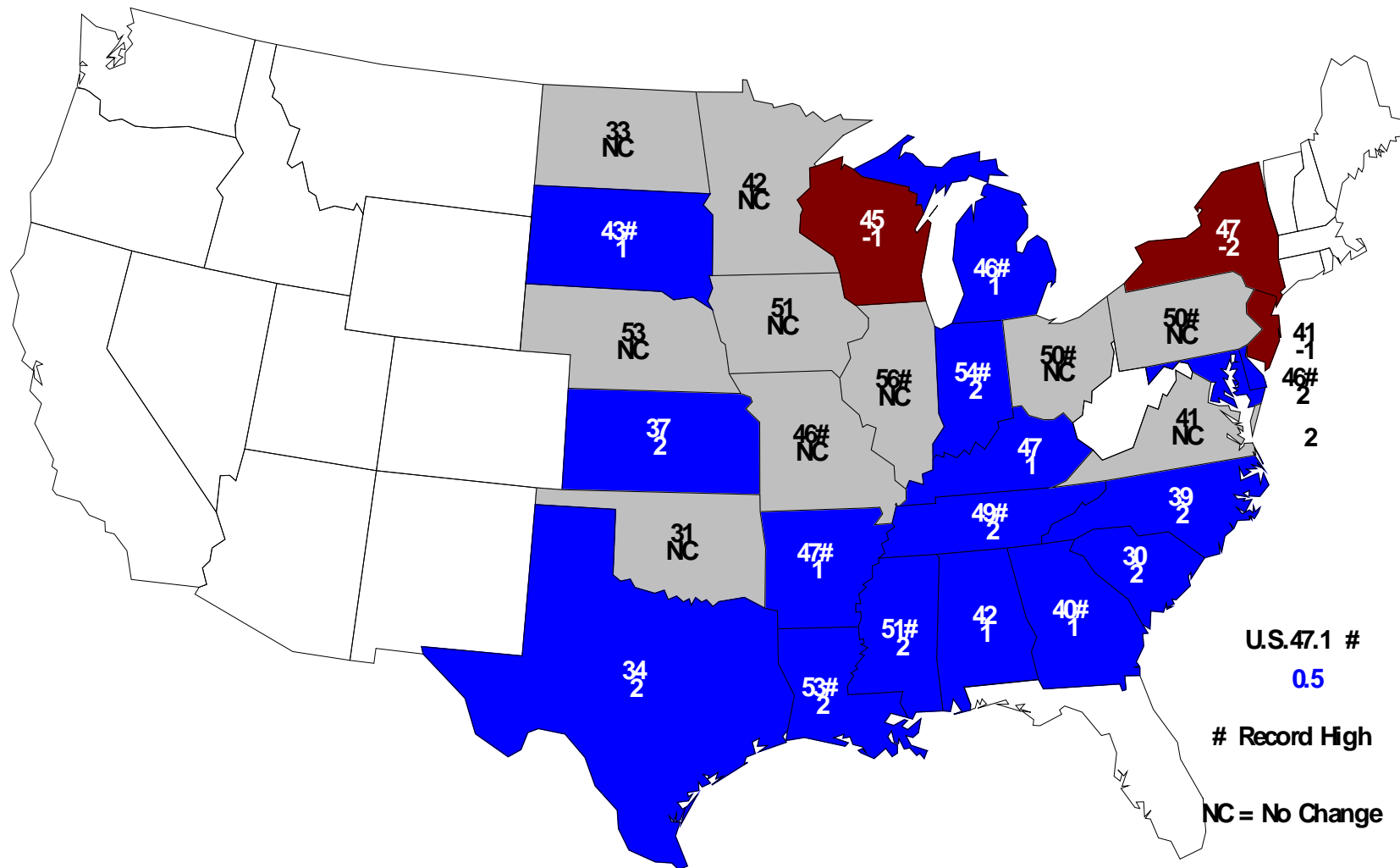
Soybean Production United States

Billion Bushels



October 1, 2014 Soybean Yield

Bushels and Change From Previous Month



U.S. 47.1 #
0.5

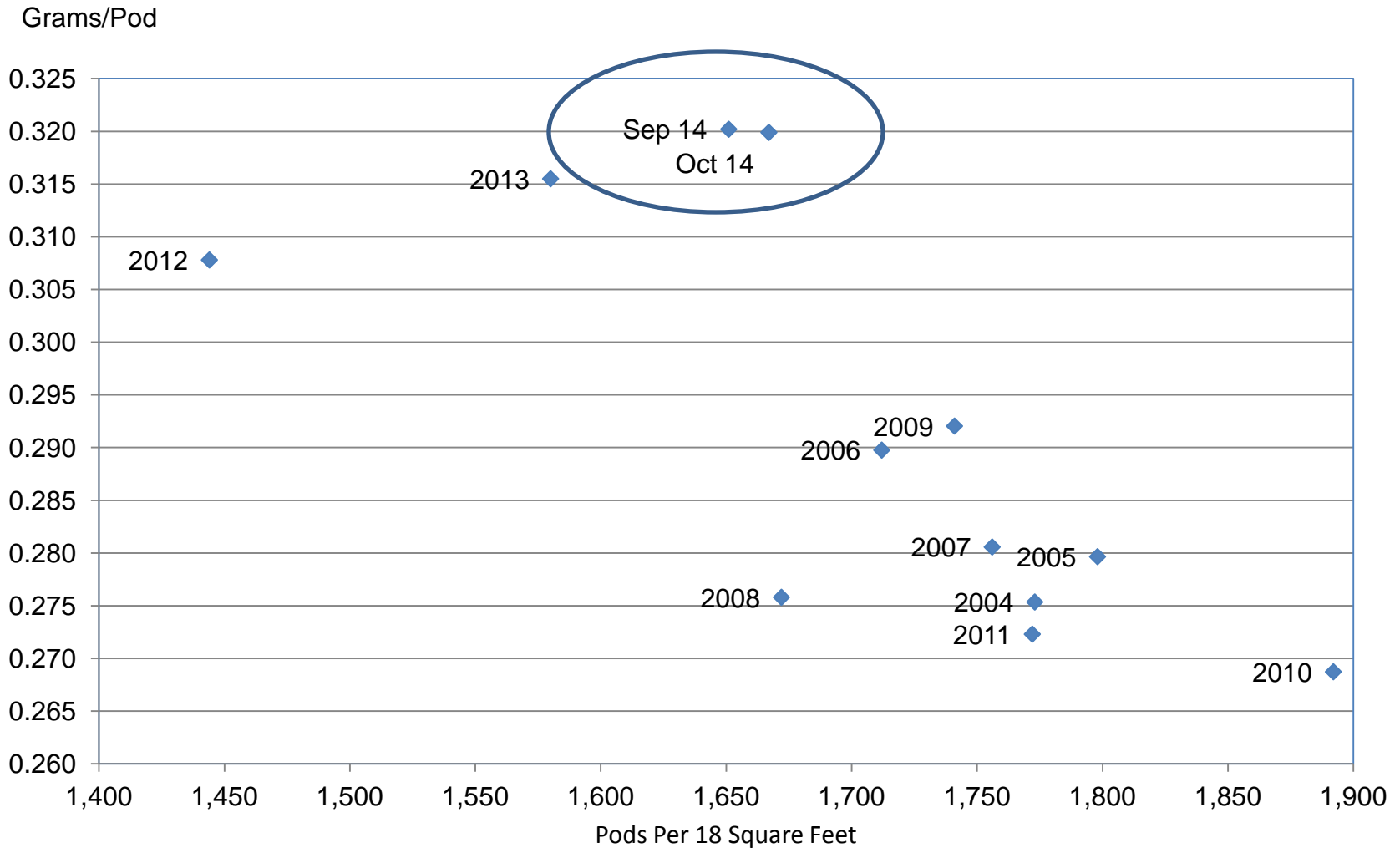
Record High

NC = No Change



Soybean Objective Yield Region

Pods Per 18 Square Feet vs. Implied Pod Weight



Implied Pod Weight = (Published Yield / Pods) / 0.0889



Soybean Objective Yield - October

Percent of Samples Processed in the Lab

Year	Mature
	<i>Percent</i>
2010	59
2011	32
2012	64
2013	NA
2014	35



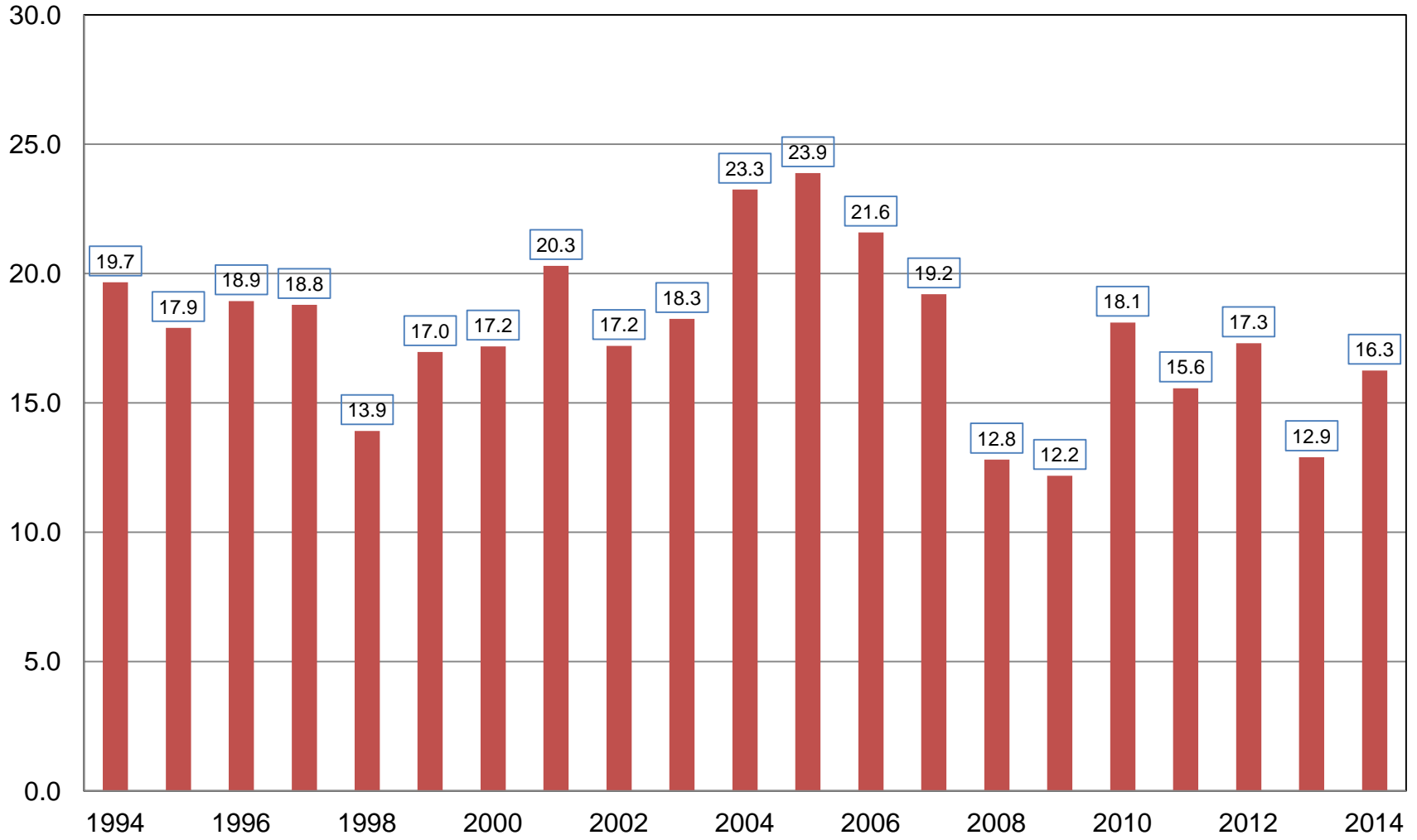
October 2014 Crop Production

Crop	Unit	October 2014	% Change From Previous Forecast	% Change From Previous Season
All Cotton				
Harvested	Mil Ac	9.88	NC	+31.0
Yield	Lb/Ac	790	-1.6	-3.8
Production	Mil Bls	16.3	-1.7	+25.9



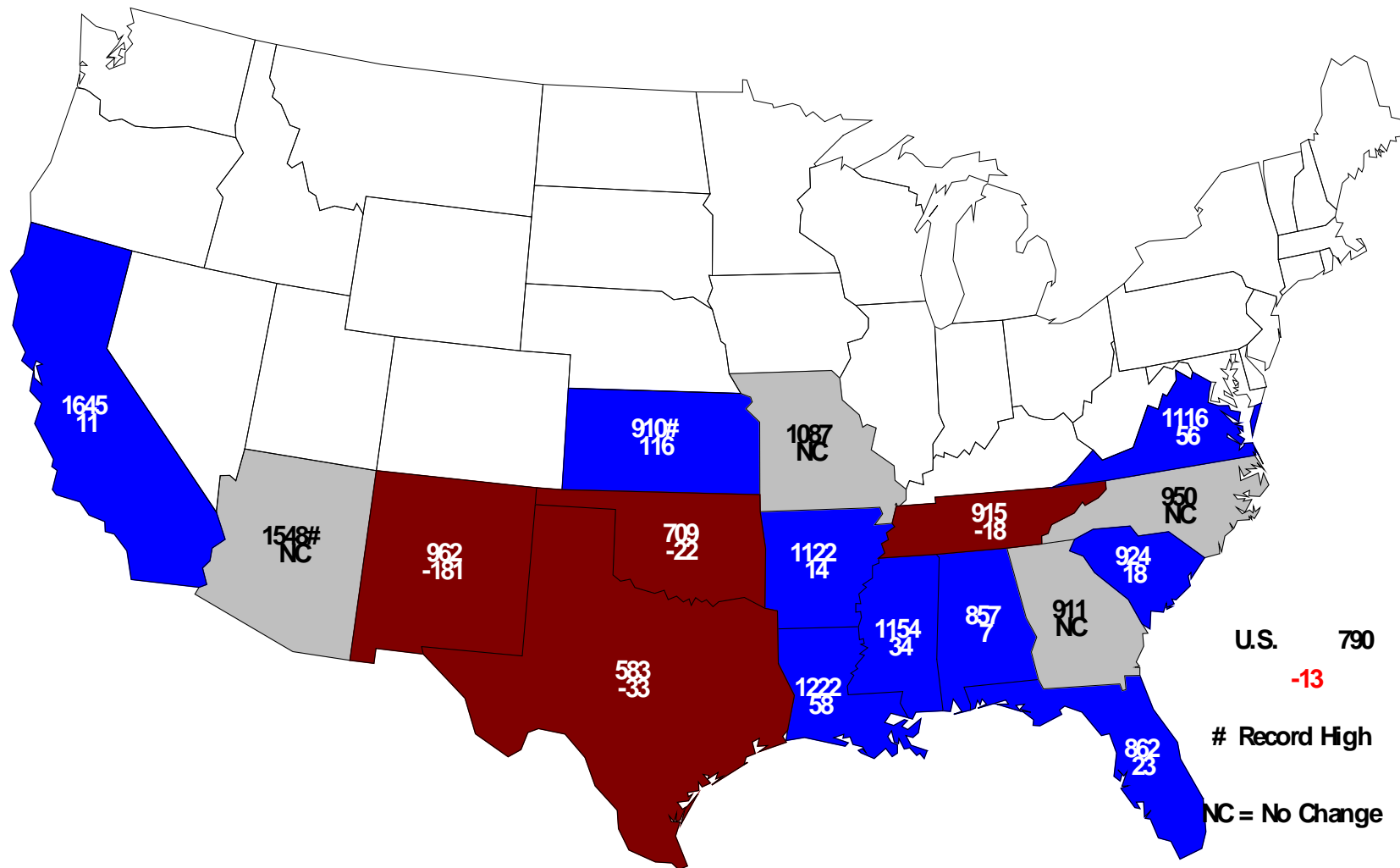
All Cotton Production United States

Million Bales



October 1, 2014 All Cotton Yield

Pounds and Change From Previous Month





October 2014 Crop Production

Crop	Unit	October 2014	% Change From Previous Forecast	% Change From Previous Season
Rice				
Harvested	Mil Ac	2.91	NC	+17.9
Yield	Lbs/Ac	7,584	+1.1	-1.4
Production	Mil Cwt	221	+1.1	+16.2



October 2014 Crop Production

Crop	Unit	October 2014	% Change From Previous Forecast	% Change From Previous Season
Peanuts				
Harvested	Mil Ac	1.31	NC	+25.3
Yield	Lbs/Ac	3,812	+0.3	-4.7
Production	Bil Lbs	4.98	+0.3	+19.4



October 2014 Crop Production

Crop	Unit	October 2014	% Change From Previous Forecast	% Change From Previous Season
Sorghum				
Harvested	Mil Ac	6.17	-3.5	-5.5
Yield	Bu/Ac	65.4	-2.7	+9.7
Production	Mil Bu	404	-6.2	+3.7



October 2014 Crop Production

Crop	Unit	October 2014	% Change From Previous Forecast	% Change From Previous Season
Alfalfa Hay				
Harvested	Mil Ac	18.2	NC	+2.4
Yield	Tons/Ac	3.55	+1.4	+9.6
Production	Mil Tons	64.5	+1.4	+12.1



October 2014 Crop Production

Crop	Unit	October 2014	% Change From Previous Forecast	% Change From Previous Season
All Other Hay				
Harvested	Mil Ac	39.5	NC	-2.6
Yield	Tons/Ac	2.13	+8.7	+9.8
Production	Mil Tons	84.1	+9.0	+7.4



October 2014 Crop Production

Crop	Unit	October 2014	% Change From Previous Forecast	% Change From Previous Season
Production				
Sugarcane	Mil Tons	29.3	-0.1	-4.6
Sugarbeets	Mil Tons	32.1	+1.7	-2.3
All Tobacco	Mil Lbs	849	+2.4	+17.3



October 2014 Crop Production

Crop	Unit	October 2014	% Change From Previous Forecast	% Change From Previous Season
Production				
Canola	Bil Lbs	2.52	NA	+14.0
Cottonseed	Mil Tons	5.37	-1.7	+27.7
Sunflowers	Bil Lbs	2.45	NA	+20.7



October 2014 Crop Production

Crop	Unit	October 2014	% Change From Previous Forecast	% Change From Previous Season
Production				
Dry Edible Beans	Mil Cwt	29.0	+1.1	+18.6
Pecans	Mil Lbs	276	NA	+3.5



Upcoming Reports

Release Date	Report Title
October 20	USDA Data Users Meeting
October 24	Cattle on Feed
October 30	Fruit & Nuts Final Estimates 2008-2012
November 3	Field Crops Final Estimates 2008-2012 Stocks of Rice, Grain, Oilseeds, & Hay Final Estimates 2008-2012 Crop Values Final Estimates 2008-2012 Potatoes & Sweet Potatoes Final Estimates 2008-2012
November 10	Crop Production



United States Department of Agriculture
National Agricultural Statistics Service

All Reports Available At
www.nass.usda.gov

For Questions
202-720-2127
800-727-9540
nass@nass.usda.gov