



United States Department of Agriculture
National Agricultural Statistics Service



Cattle, Sheep & Goat Inventory

Executive Briefing

January 1, 2015

Survey Overview

- **January Cattle, Sheep and Goats**
 - Data Collection Period: Dec. 26 – Jan. 15
 - Sample Sizes
 - Cattle 38,200
 - Sheep & Goats 22,700
 - Collection Methods
 - Phone, mail, internet, personal interview
 - Data Items
 - Total Inventory
 - Inventory by Class
 - Calf/Lamb/Kid Crop

U.S. Cattle and Calves: Revisions to January 1, 2014

Item	Estimate 1,000 head	Change 1,000 head	Revision
All cattle and calves	88,526.0	+796	+0.9%
All cows and heifers	38,293.0	+42	+0.1%
Calf crop	33,730.0	-200	-0.6%

Revisions to July 1, 2014

Item	Estimate 1,000 head	Change 1,000 head	Revision
All cattle and calves	96,000.0	+1,000	+1.1%
All cows and heifers	38,900.0	-100	-0.3%
Calf crop	33,900.0	+300	+0.9%



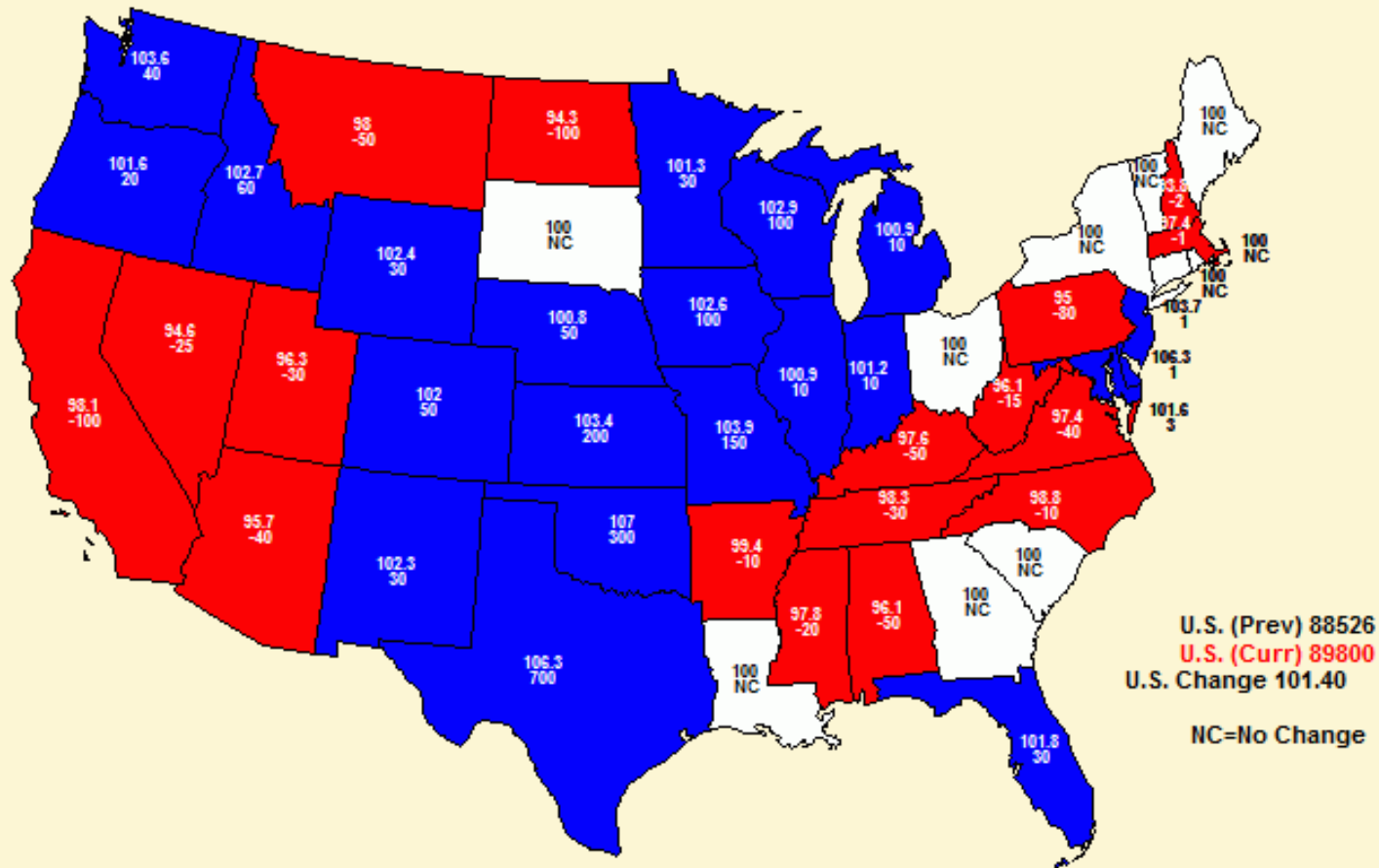
U.S. Cattle Inventory January 1



Items	2014	2015	% PY
	1,000 head		
All Cattle & Calves	88,526.0	89,800.0	101%
Cows & Heifers that have Calved	38,293.0	39,000.0	102%
Beef Cows	29,085.4	29,693.1	102%
Milk Cows	9,207.6	9,306.9	101%
All Heifers 500 lbs & over	18,969.4	19,240.2	101%
For Beef Replacements	5,551.3	5,777.4	104%
Beef Repl. Expected to Calve	3,305.0	3,546.0	107%
For Milk Replacements	4,548.7	4,615.4	101%
Milk Repl. Expected to Calve	2,966.7	2,997.2	101%
Other Heifers	8,869.4	8,847.4	100%
Steers 500 lbs & over	15,667.9	15,778.5	101%
Bulls 500 lb & over	2,037.8	2,104.4	103%
Calves under 500 lbs	13,557.9	13,676.9	101%
Cattle on Feed	13,018.3	13,093.0	101%
Previous Year Calf Crop	33,730.0	33,900.0	101%

January 2015 Cattle Inventory - Percent of PY & Change

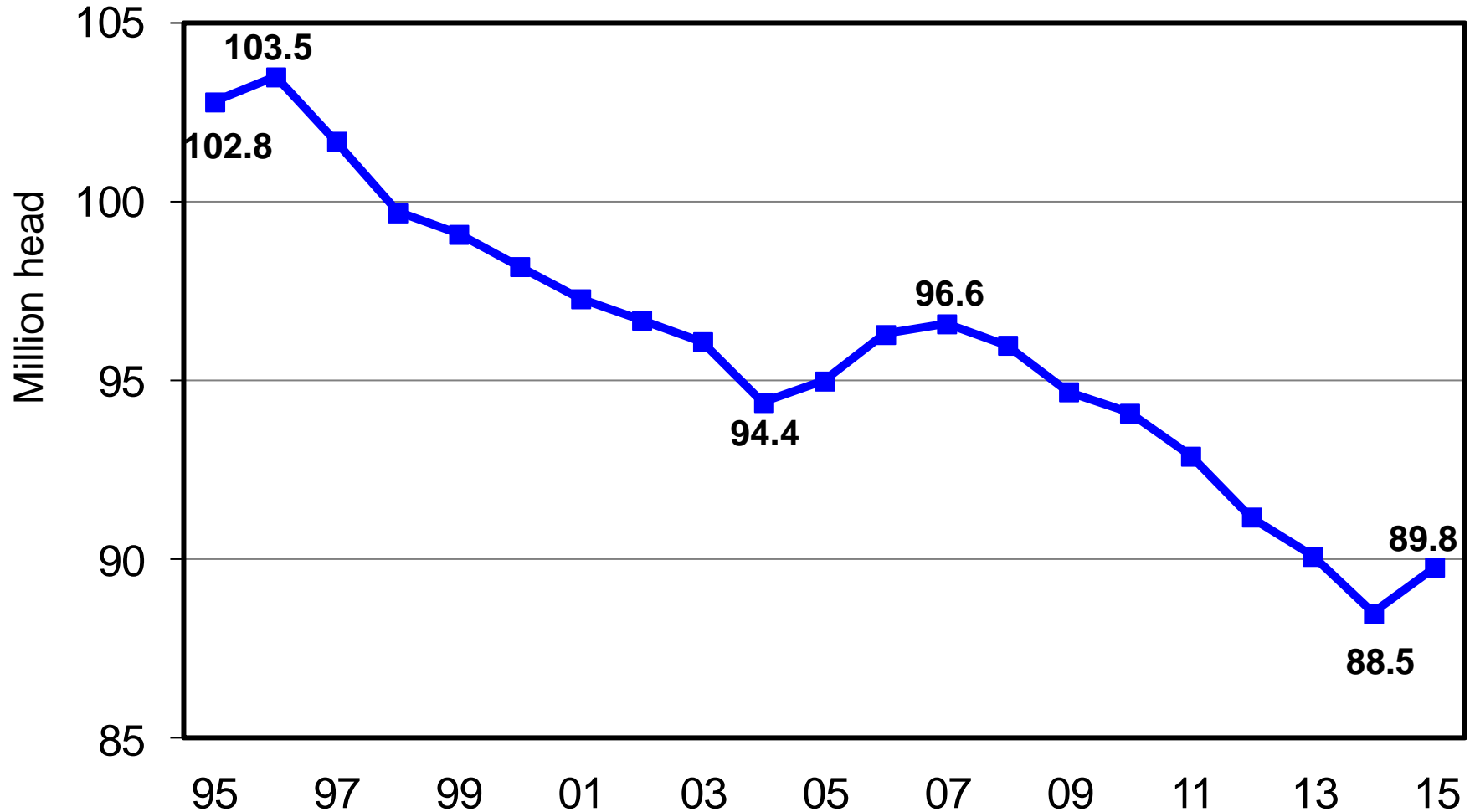
All Cattle and Calves



USDA_NASS
1/28/15
10:26 AM

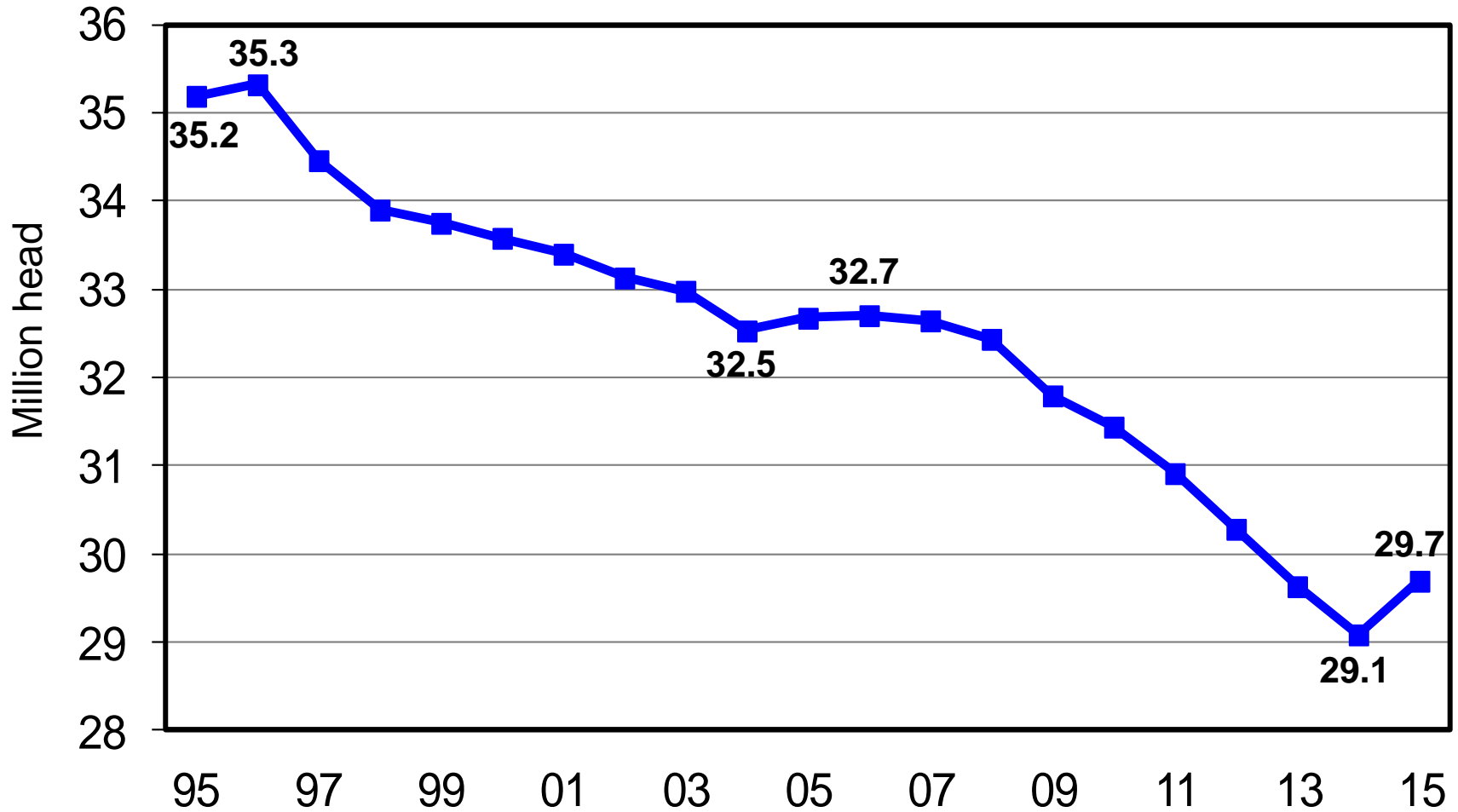
U.S. All Cattle & Calves

January 1, 1995 - 2015



U.S. Beef Cows

January 1, 1995 - 2015



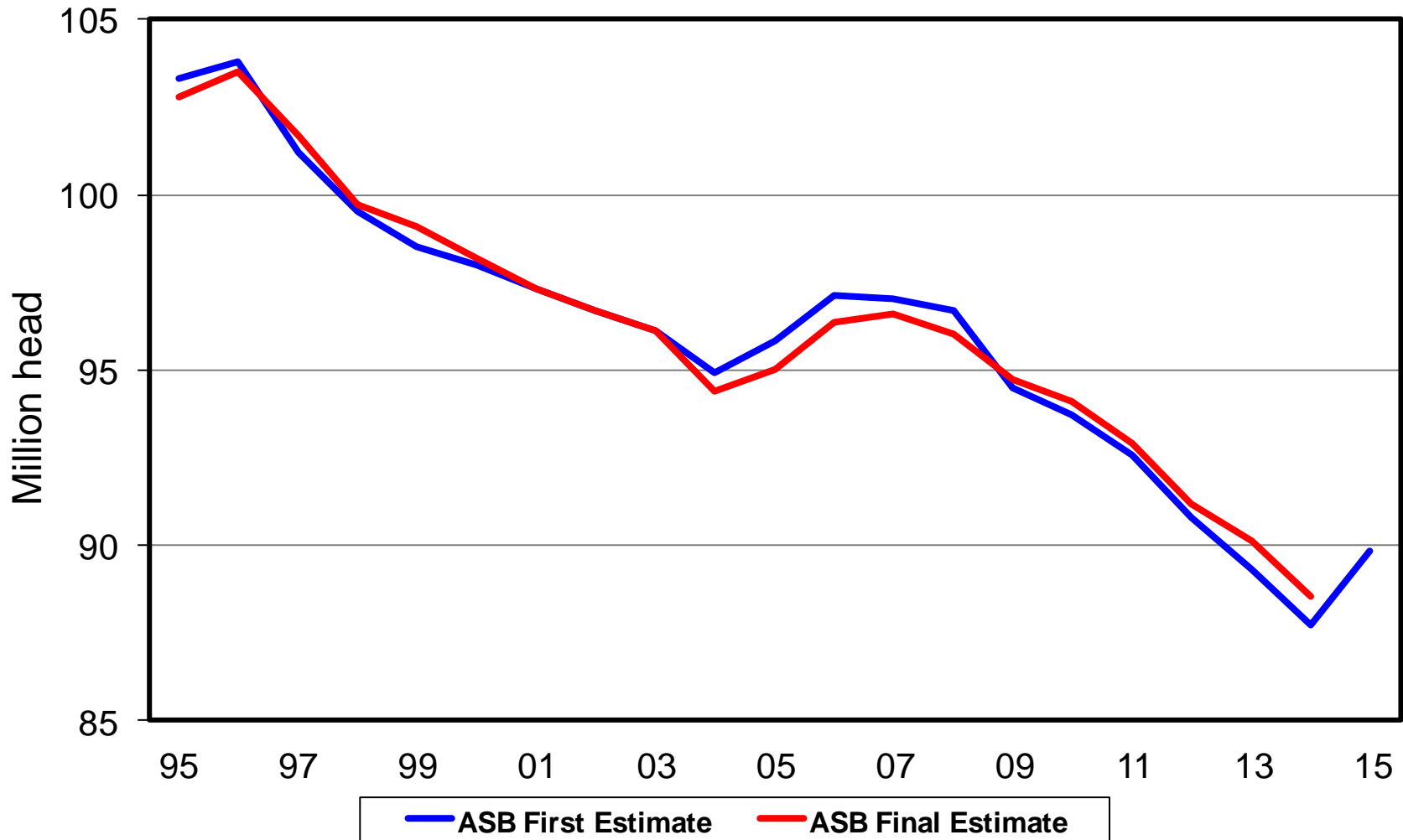
NASS Estimates Compared to Trade Expectations Percent of Previous Year

Inventory Items	NASS Estimate	Trade Average	Trade Range
All Cattle & Calves	101.4%	99.9%	99.7 – 100.0%
All Cows	101.8%	100.6%	99.9 – 101.5%
Beef Cows	102.1%	100.6%	99.7 – 101.6%
Milk Cows	101.1%	100.5%	99.9 – 100.9%
Calf Crop	100.5%	98.5%	97.0 – 99.3%
All Cattle on Feed	100.6%	NA	NA

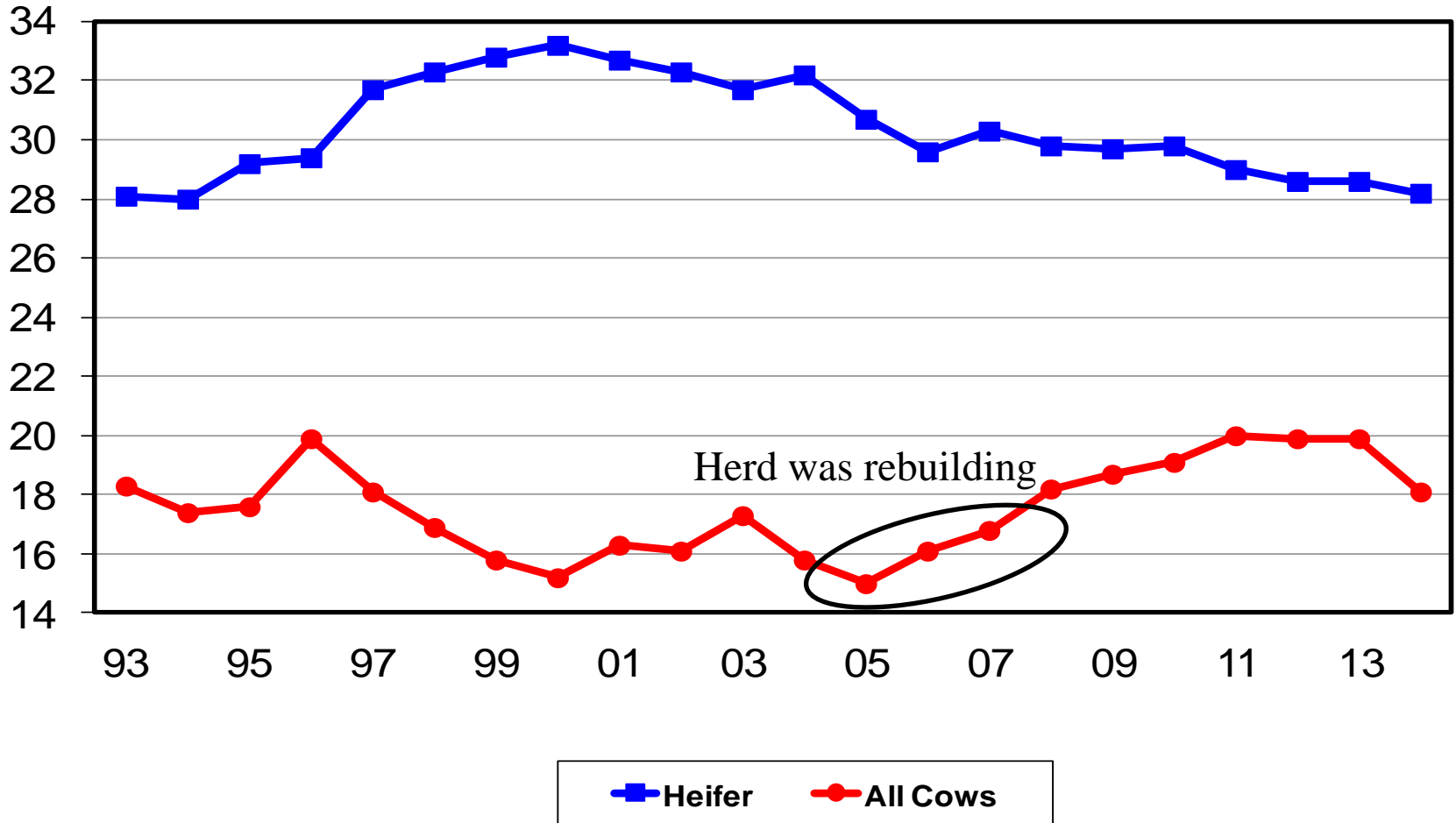
All Cattle Inventory

First Estimate Versus Final Estimate

January 1, 1995 - 2015



All Cow & Heifer Slaughter as a Percent of Total Slaughter





U.S. Feeder Cattle Supply on January 1

Item	2014	2015	% PY
	<small>Thousand head</small>		
Calves < 500 lbs	13,558	13,677	101%
Steers & Heifers > 500 lbs	24,537	24,626	100%
Total Supply	38,095	38,303	101%
Cattle on Feed	13,018	13,093	101%
Feeder Cattle Supply	25,077	25,210	101%
	<small>Million head</small>		
Number Grazing on Small Grain Pasture, 3 States	1.61	1.93	120%

Totals may not add due to rounding

January 30, 2015

U.S. Sheep and Goats: Revisions to January 1, 2014

Item	Estimate 1,000 head	Change 1,000 head	Revision
All sheep and lambs	5,245.0	+35	+0.7%
Lamb crop	3,370.0	0	0.0%

Item	Estimate 1,000 head	Change 1,000 head	Revision
All goats and kids	2,611.0	-150	-5.4%
Kid crop	1,682.0	-57	-3.3%

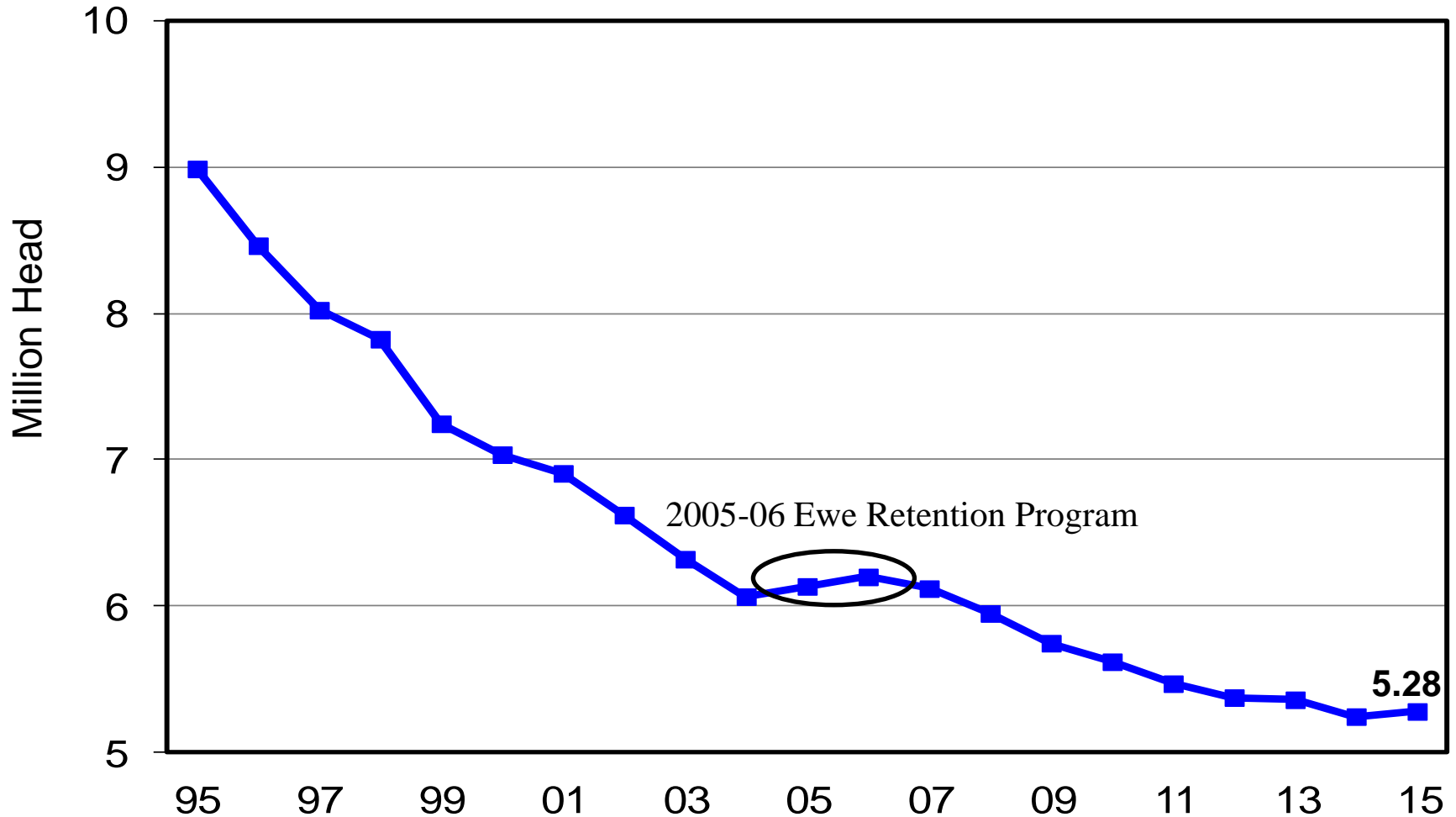


U.S. Sheep and Lamb Inventory, January 1

Items	2014	2015	% PY
	1,000 head		
All Sheep & Lambs	5,245	5,280	101%
Market	1,345	1,345	100%
Breeding	3,900	3,935	101%
Replacement Lambs Under One Year Old	635	650	102%
Ewes One Year Old and Older	3,090	3,110	101%
Rams One Year Old and Older	175	175	100%
Previous Year Lamb Crop	3,370	3,440	102%

U.S. Sheep and Lambs

January 1, 1995 - 2015





U.S. Goat and Kid Inventory, January 1

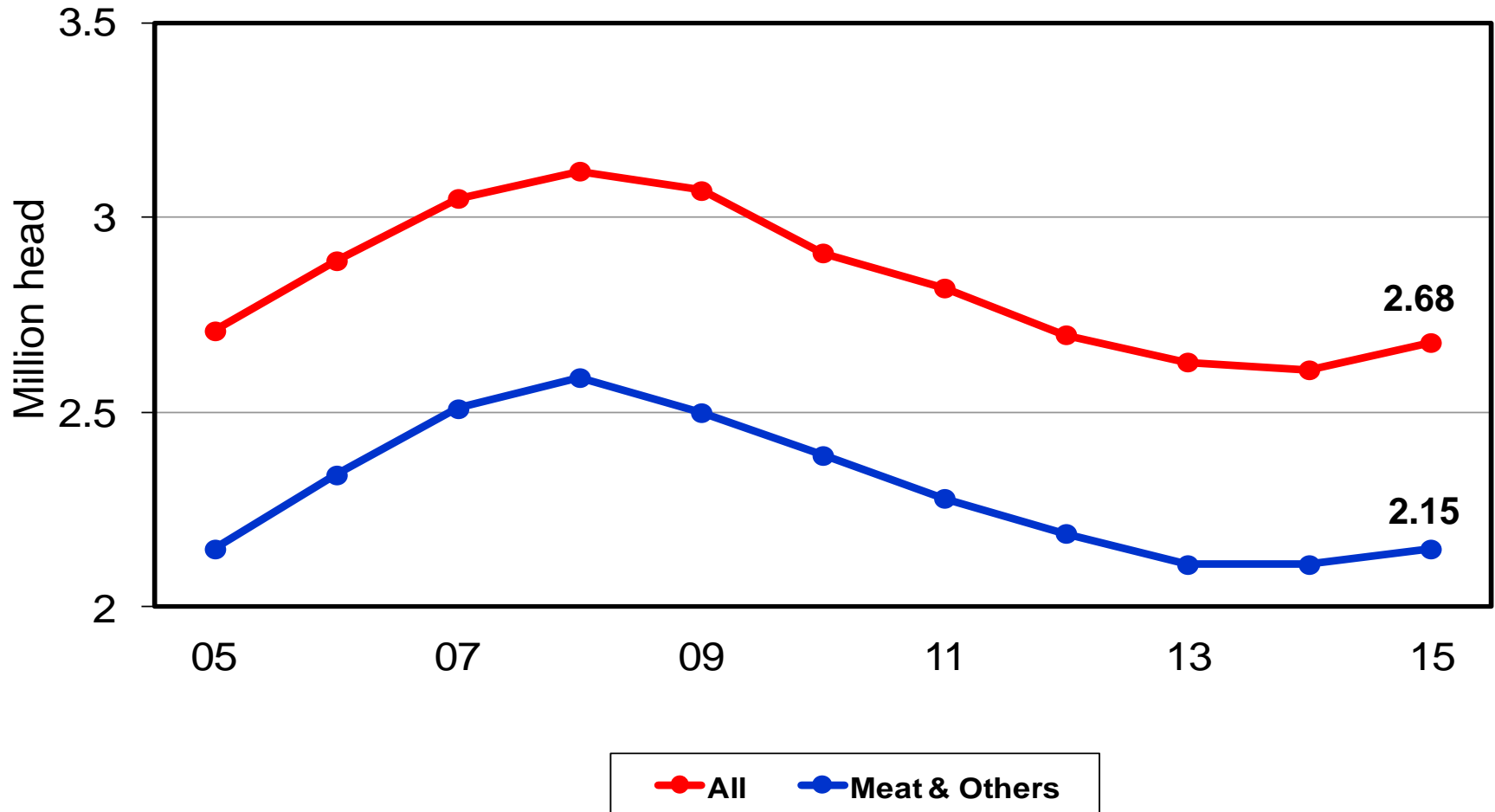
Items	2014	2015	% PY
	1,000 head		
All Goats & Kids	2,611	2,675	102%
Market	460	471	102%
Breeding	2,151	2,204	102%
Replacement Kids Under One Year Old	388	391	101%
Does One Year Old and Older	1,599	1,647	103%
Bucks One Year Old and Older	164	166	101%
Previous Year Kid Crop	1,682	1,714	102%

U.S. Goat Inventory by Type

Items	2014	2015	% of PY
	1,000 head		
Total Goats	2,611.0	2,675.0	102%
Meat & Other	2,105.0	2,150.0	102%
Milk	358.0	365.0	102%
Angora	148.0	160.0	108%

U.S. All Goats Inventory versus Meat and Other Goats Inventory

January 1, 2005 - 2015





United States Department of Agriculture
National Agricultural Statistics Service



Upcoming Reports

- | | |
|-------------|--|
| February 10 | Crop Production |
| February 20 | Milk Production
Cattle on Feed |
| February 27 | Agricultural Prices |
| March 5 | U.S. and Canadian Cattle,
Sheep, and Hogs |



United States Department of Agriculture
National Agricultural Statistics Service



All Reports Available At
www.nass.usda.gov

For Questions Call or Email

202-720-3570

800-727-9540

nass@nass.usda.gov