



United States Department of Agriculture
National Agricultural Statistics Service

June Crop Production
Executive Summary

Hubert Hamer, Director
Statistics Division



Contents

Field Crops	Fruit & Nuts	Specialty Crops
Winter Wheat	Citrus	Maple Syrup
Sugarcane*	Prunes	
Sugarbeets*		
Sweet Potatoes*		

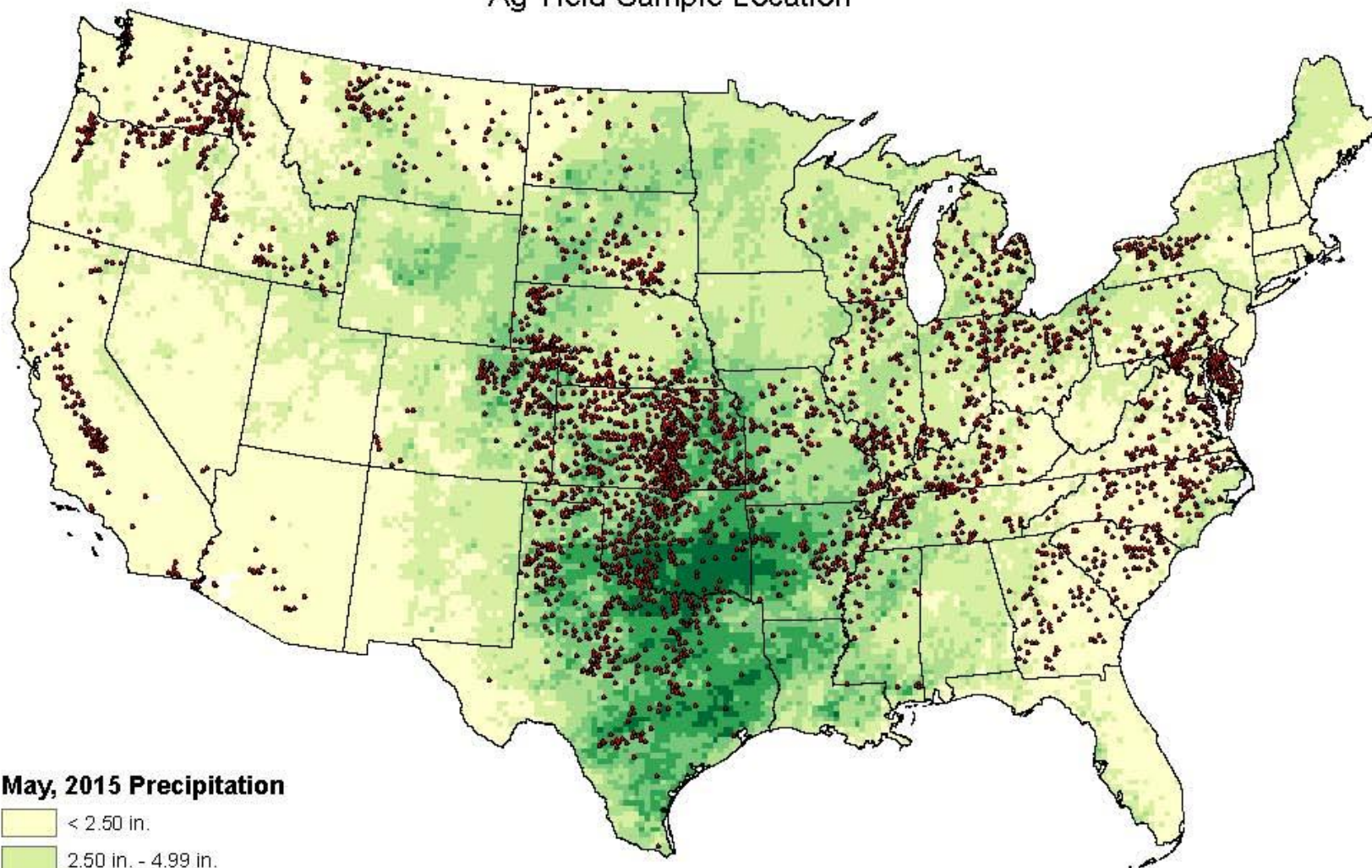
* 2014 Crop Year Revisions



Survey Overview

	Ag Yield	Objective Yield
Survey Type	Farmer Reported	Field Measurement
Crops Included	Winter and Durum Wheat	Winter Wheat
States	30	10
Sample Size	5,009	1,090
Collection Period	May 27-June 5	May 25-June 1

U.S. Precipitation For May, 2015 Compared with Ag Yield Sample Location



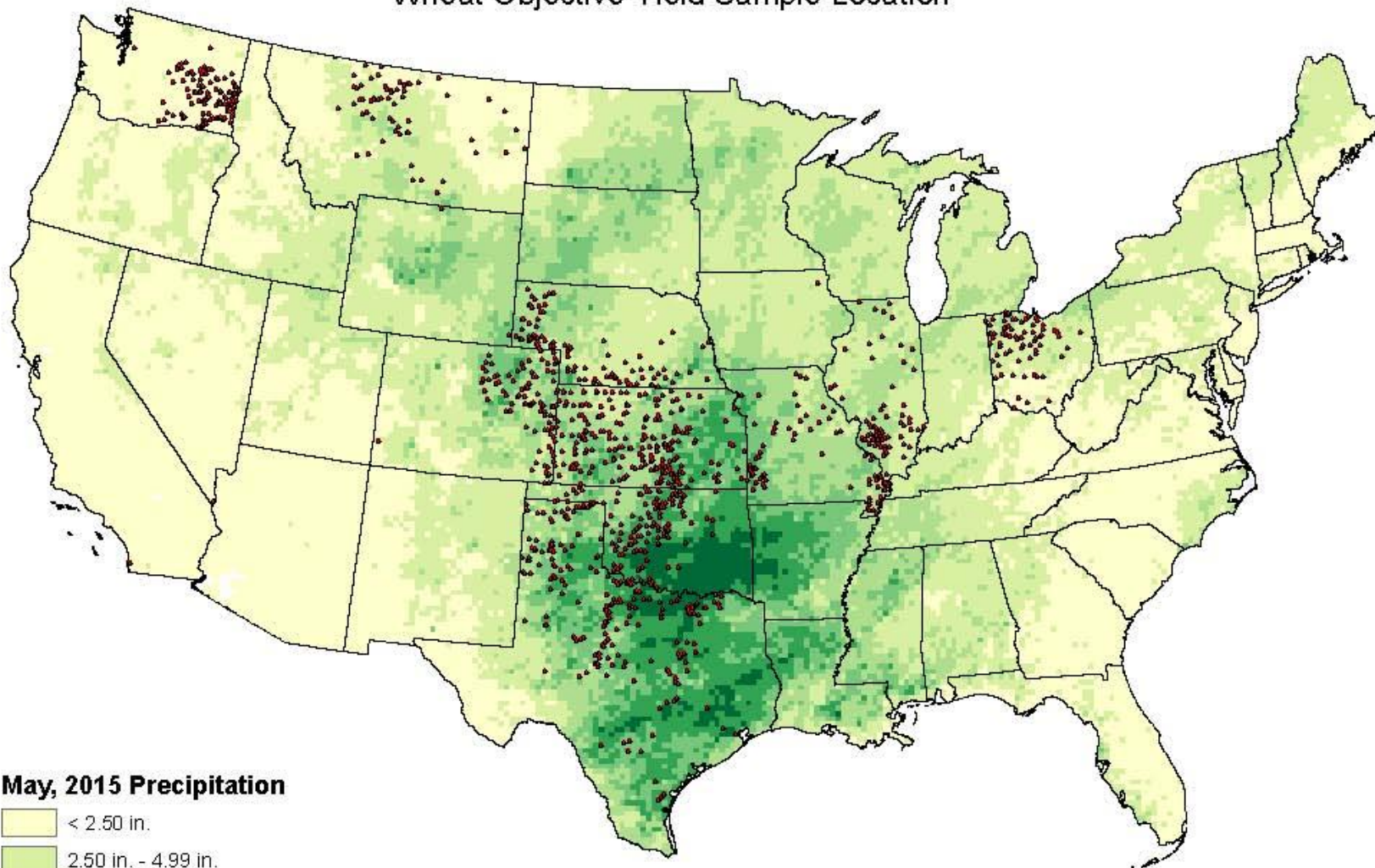
May, 2015 Precipitation



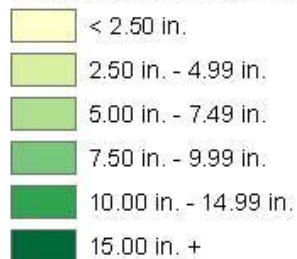
Sources:

USDA-NASS
 NOAA/ National Weather Service
 National Centers for Environmental Prediction
 Climate Prediction Center
 National Center for Weather and Climate Prediction

U.S. Precipitation For May, 2015 Compared with Wheat Objective Yield Sample Location



May, 2015 Precipitation



Sources:

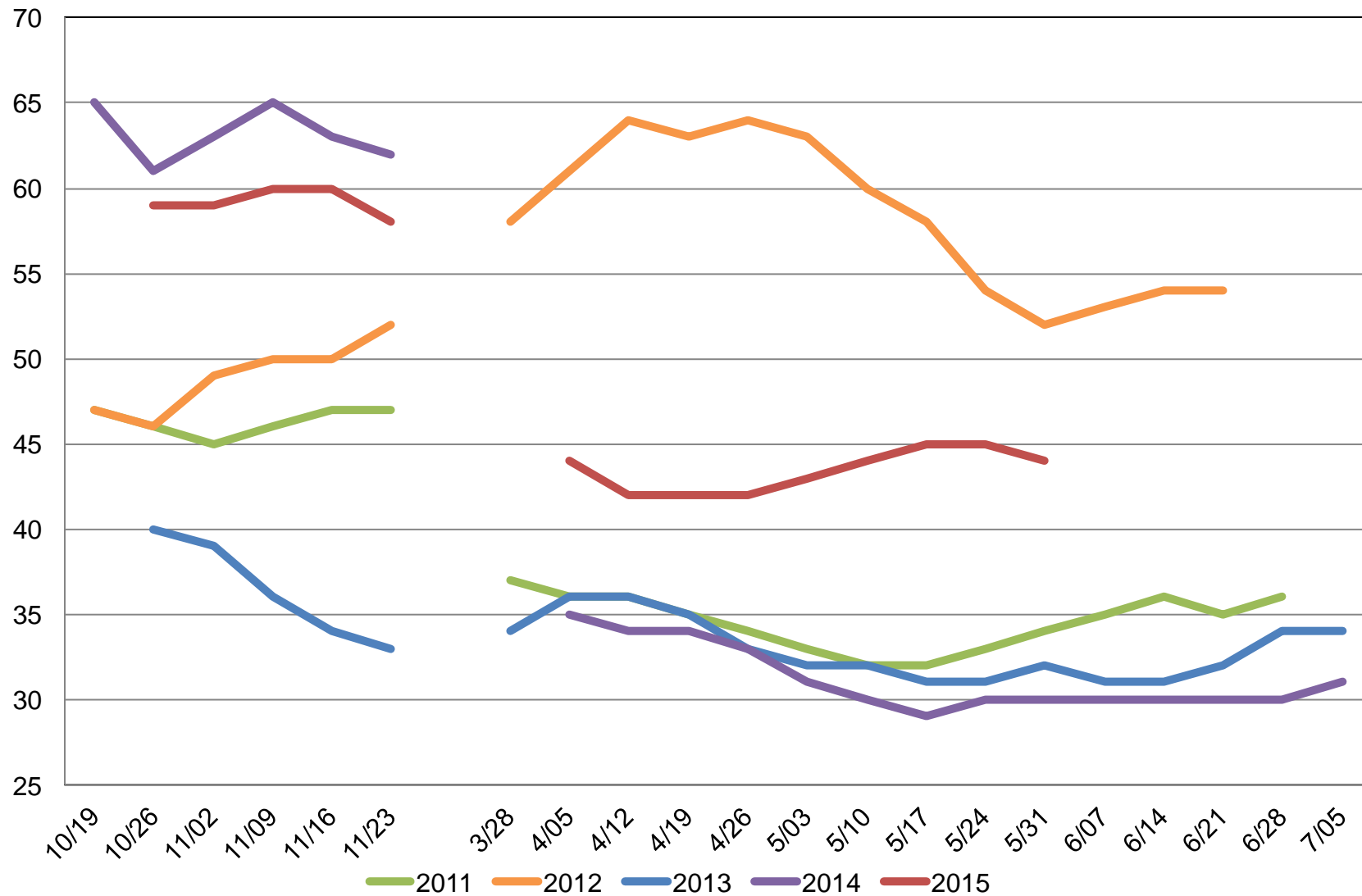
USDA-NASS
NOAA/ National Weather Service
National Centers for Environmental Prediction
Climate Prediction Center
National Center for Weather and Climate Prediction



U.S. Winter Wheat Condition

Percent Rated Good to Excellent

Percent

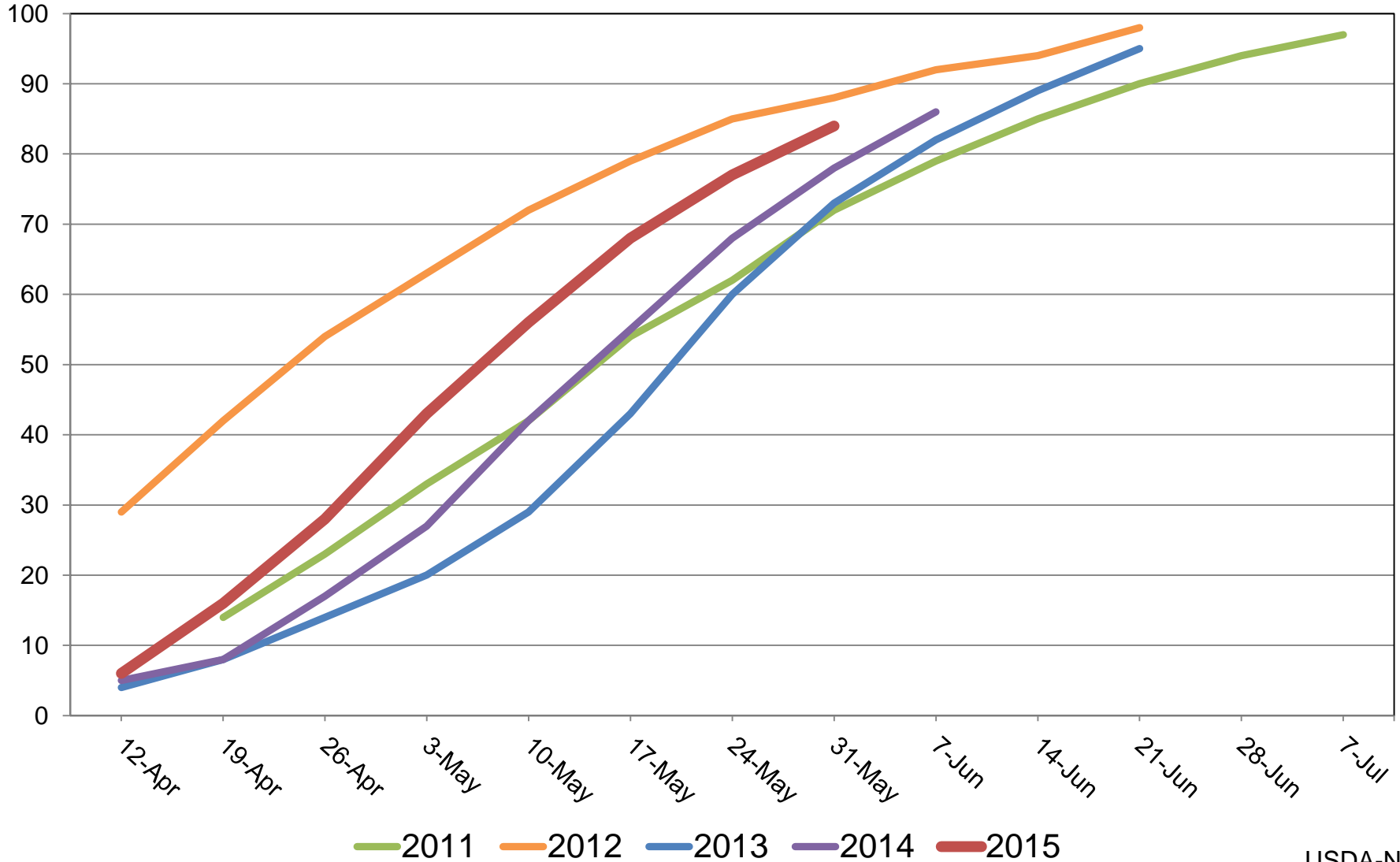




U.S. Winter Wheat Progress

Percent

Percent Headed



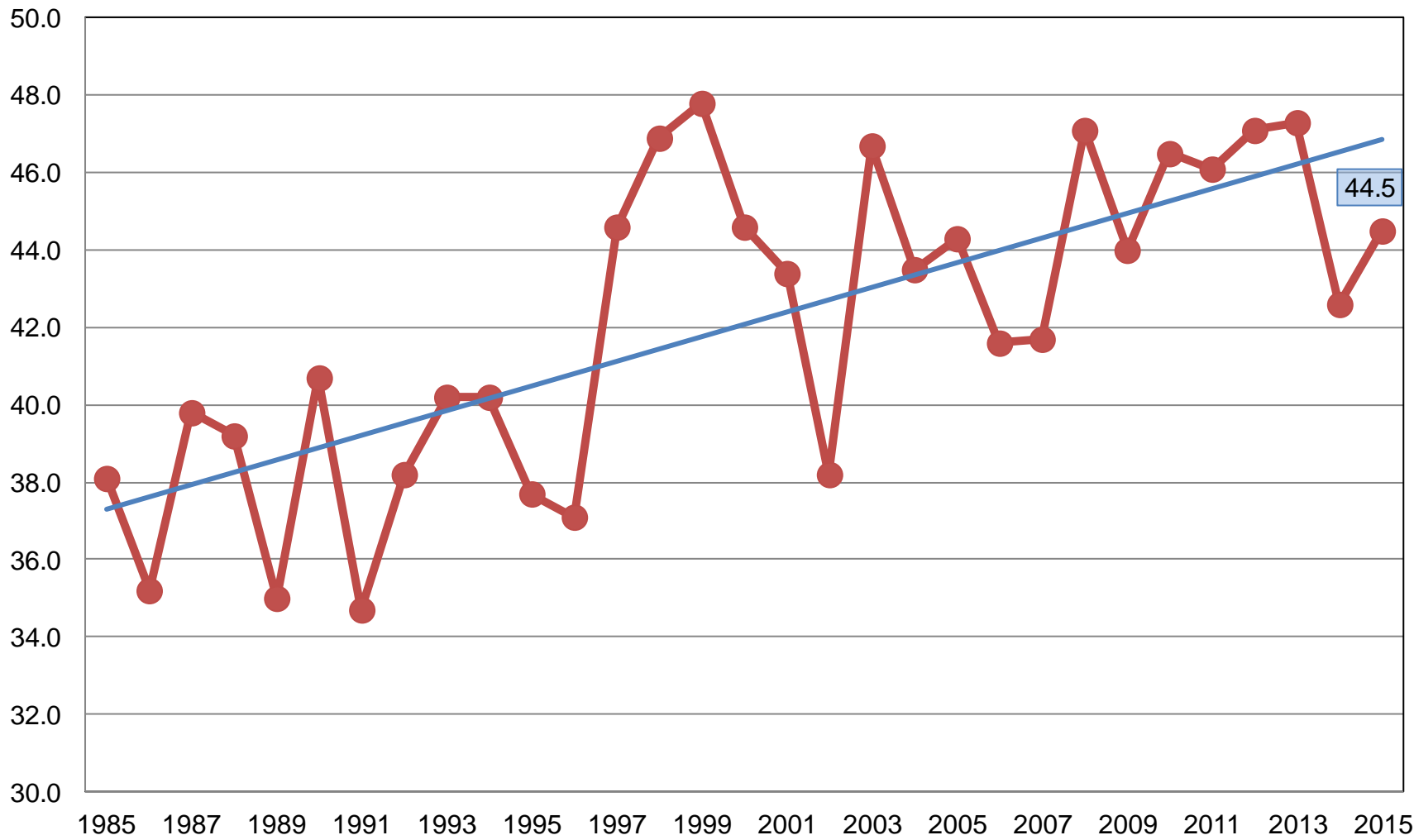


June 2015 Crop Production

Crop	Unit	June 2015	% Change From Previous Forecast	% Change From Previous Season
Wheat, Winter				
Harvested	Mil Ac	33.8	NC	+4.7
Yield	Bu/Ac	44.5	+2.3	+4.5
Production	Bil Bu	1.51	+2.3	+9.3
Prod by Class				
Hard Red	Mil Bu	887	+4.0	+20.3
Soft Red	Mil Bu	414	-0.4	-9.1
White	Mil Bu	204	+0.5	+10.6

Winter Wheat Yield United States

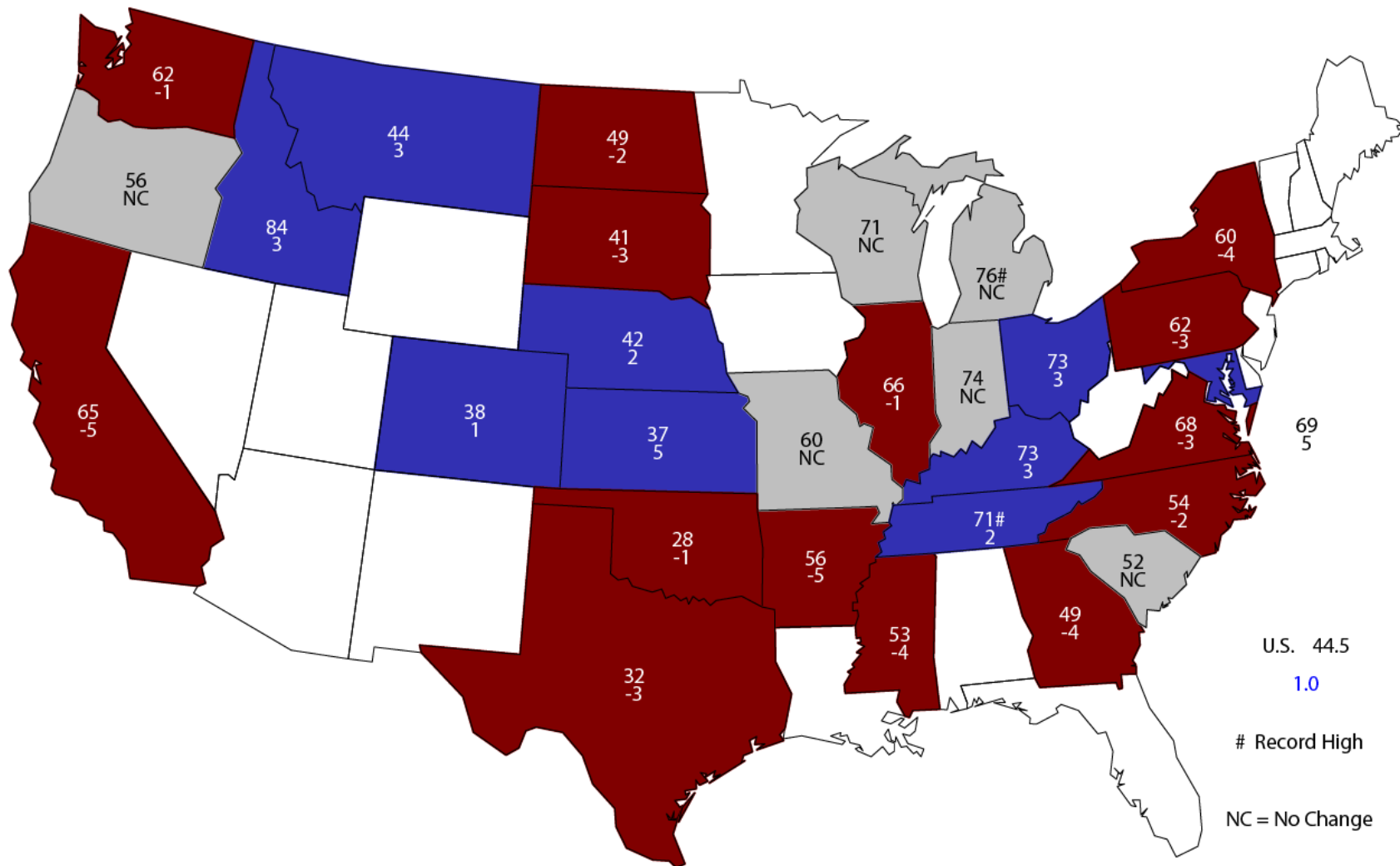
Bushels per Acre



● Yield — Linear (Yield)

June 1, 2015 Winter Wheat Yield

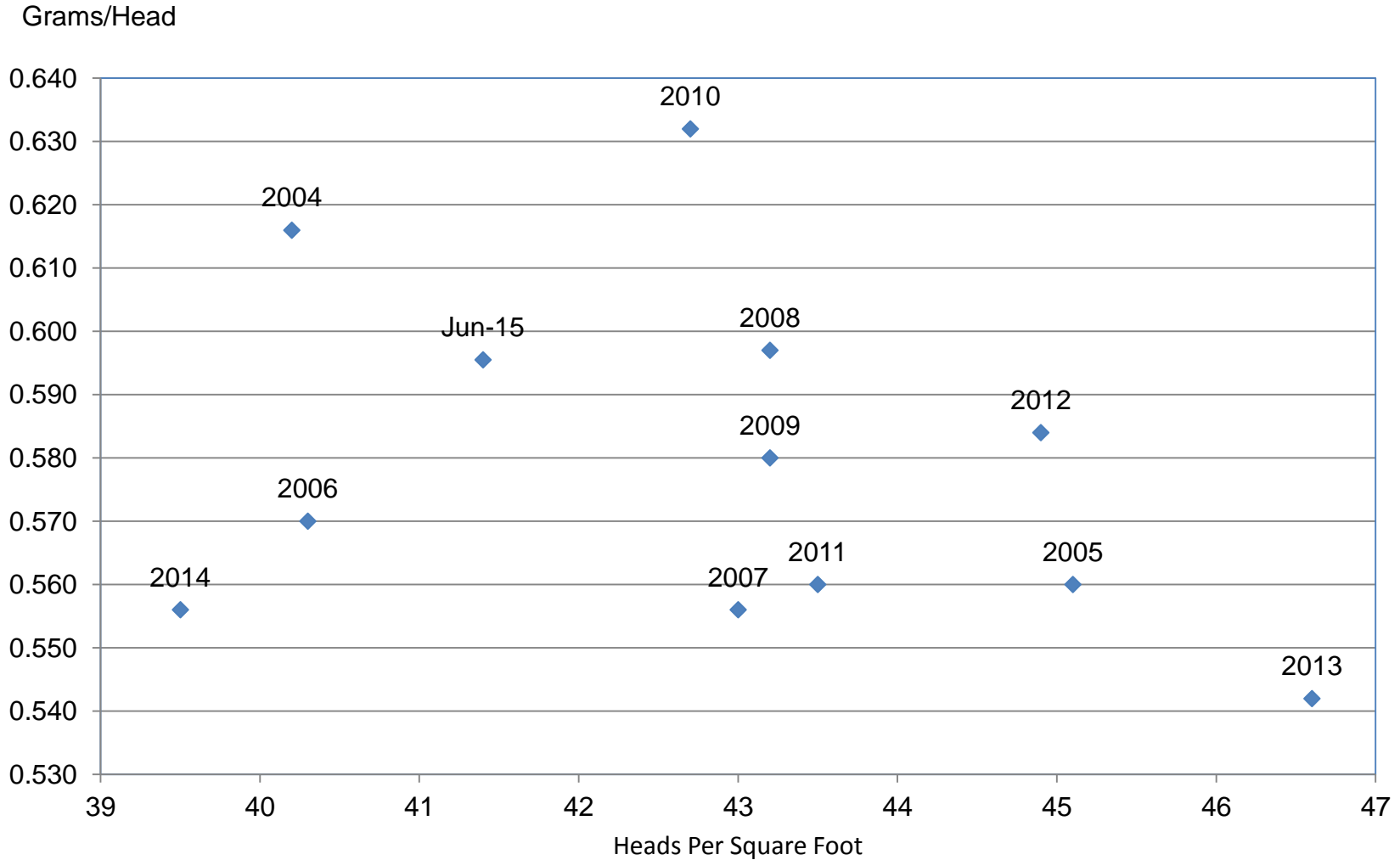
Bushels and Change From Previous Month





Wheat Objective Yield Region

Heads Per Square Foot vs. Implied Head Weight



Implied Head Weight = (Published Yield * 60) / Heads



Survey Overview

Florida Citrus

	Fruit Maturity	Row Count
Survey Type	Laboratory Tests	Field Observations
Crops Included	Valencias	Oranges, Grapefruit, tangelos, Late tangerines
Sample Size	14 samples	170,524 rows
Collection Period	June 1-2	June 1-2
Test Period	June 3	



June 2015 Crop Production

Crop	Unit	June 2015	% Change From Previous Forecast	% Change From Previous Season
Production				
Oranges	Mil Tons	6.43	NC	-4.9
Grapefruit	Thou Tons	982	+0.2	-6.2
Tangelos	Thou Tons	32.0	NC	-20.0
Tangerines & Mandarins	Thou Tons	758	NC	+3.3



June 2015 Crop Production

Crop	Unit	June 2015	% Change From Previous Forecast	% Change From Previous Season
Production				
Maple Syrup	Mil Gal	3.41	NA	+6.3
Prunes, dried (CA)	Thou Tons	100	NA	-3.8
Acreage				
Hops	Thou Ac	44.0	NA	+15.7



2014 Revisions – Sugarcane

Crop	Unit	June 2015	% Change From Previous Estimate	% Change From Previous Season
Sugarcane				
Harvested	Thou Ac	870	-0.4	-4.4
Yield	Tons/Ac	35.0	-2.0	+3.6
Production	Mil Tons	30.4	-2.4	-1.1



2014 Revisions – Sugarbeets

Crop	Unit	June 2015	% Change From Previous Estimate	% Change From Previous Season
Sugarbeets				
Planted	Mil Ac	1.16	+0.2	-2.9
Harvested	Mil Ac	1.15	-<0.1	-0.6
Yield	Tons/Ac	27.4	NC	-3.5
Production	Mil Tons	31.4	-0.1	-4.3



2014 Revisions - Sweet Potatoes

Crop	Unit	June 2015	% Change From Previous Estimate	% Change From Previous Season
Sweet Potatoes				
Harvested	Thou Ac	135	NC	+19.4
Yield	Cwt/Ac	219	NC	NC
Production	Mil Cwt	29.6	NC	+19.4



Upcoming Reports

Release Date	Report Title
June 19	Cattle on Feed
June 26	Quarterly Hogs and Pigs
June 29	Agricultural Prices
June 30	Acreage Grain Stocks Rice Stocks
July 10	Crop Production



United States Department of Agriculture
National Agricultural Statistics Service

All Reports Available At
www.nass.usda.gov

For Questions
202-720-2127
800-727-9540
nass@nass.usda.gov