



United States Department of Agriculture
National Agricultural Statistics Service

September Crop Production
Executive Summary

Lance Honig, Chief
Crops Branch



Contents

Field Crops	Fruit & Nuts	Specialty Crops
Corn	Navel Oranges (CA)	Tobacco
Soybeans	Hazelnuts	Sugarbeets
Cotton	Walnuts	Sugarcane
Rice		
Peanuts		
Sorghum		



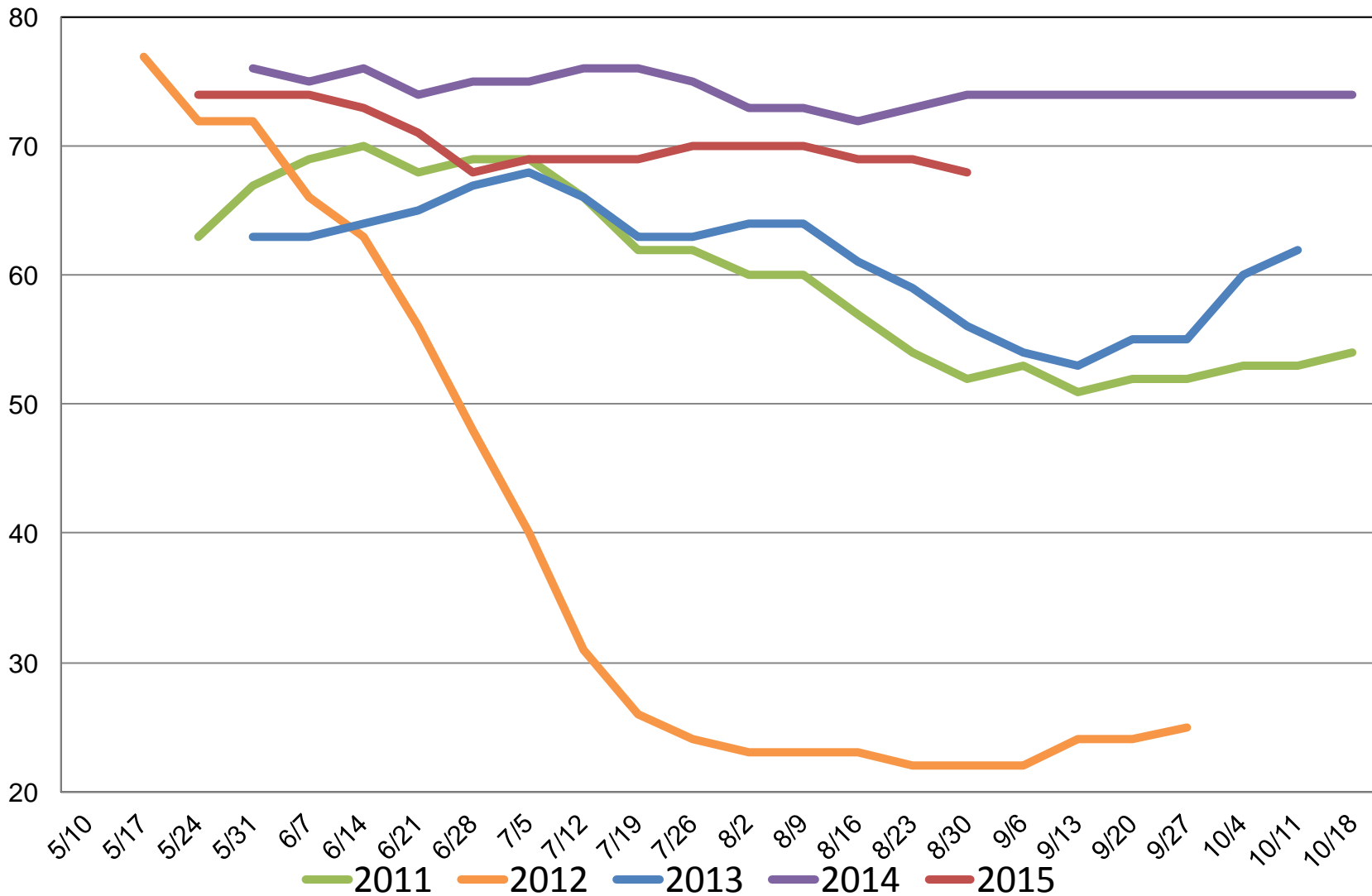
Survey Overview

	Ag Yield	Objective Yield
Survey Type	Farmer Reported	Field Measurement
Crops Included	Field Crops	Corn, Cotton, Soybeans
Sample Size	10,668	4,972
Collection Period	Aug 27 – Sep 8	Aug 25 – Sept 1

U.S. Corn Condition

Percent Rated Good to Excellent

Percent





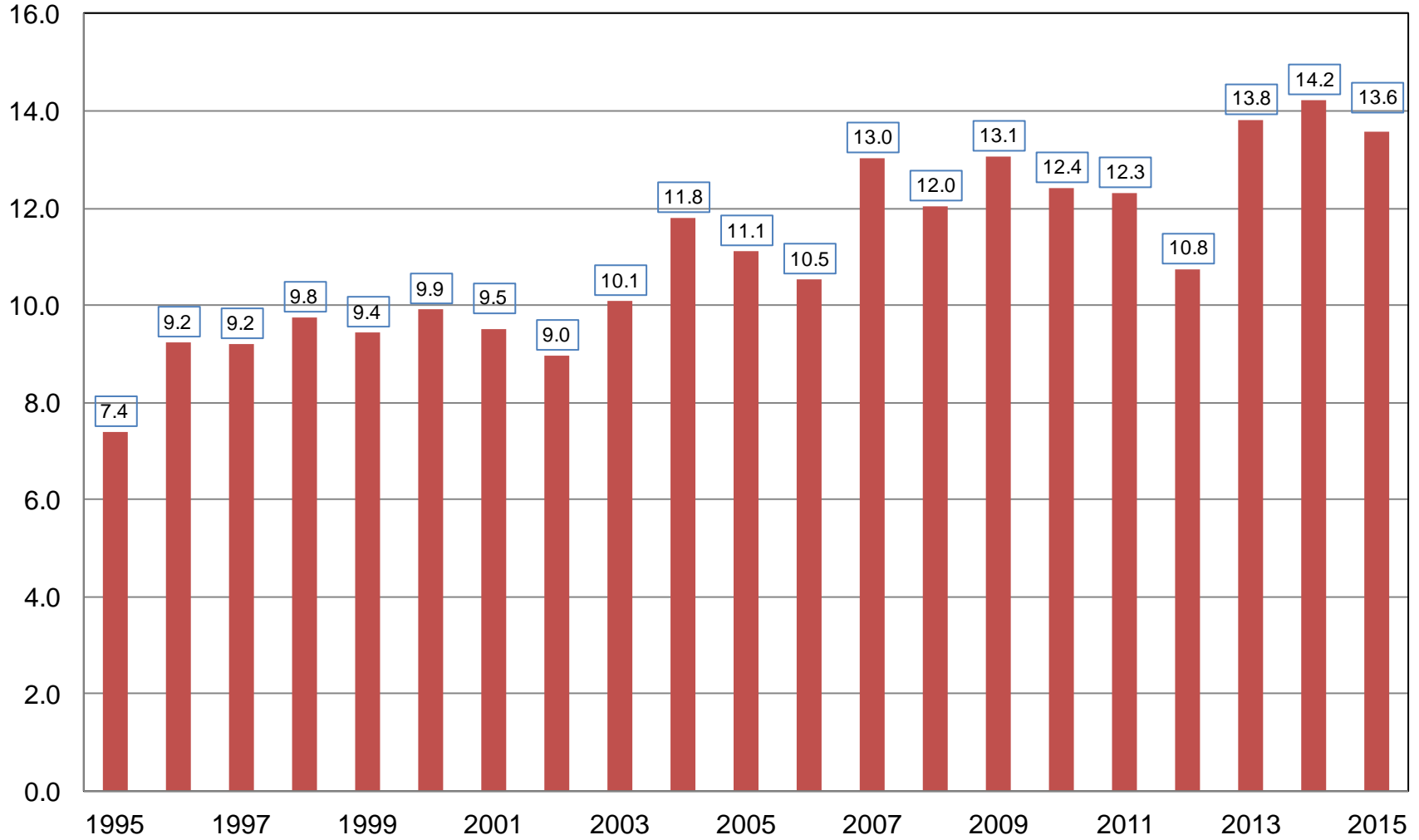
September 2015 Crop Production

Crop	Unit	September 2015	% Change From Previous Forecast	% Change From Previous Season
Corn				
Harvested	Mil Ac	81.1	NC	-2.4
Yield	Bu/Ac	167.5	-0.8	-2.0
Production	Bil Bu	13.6	-0.7	-4.4



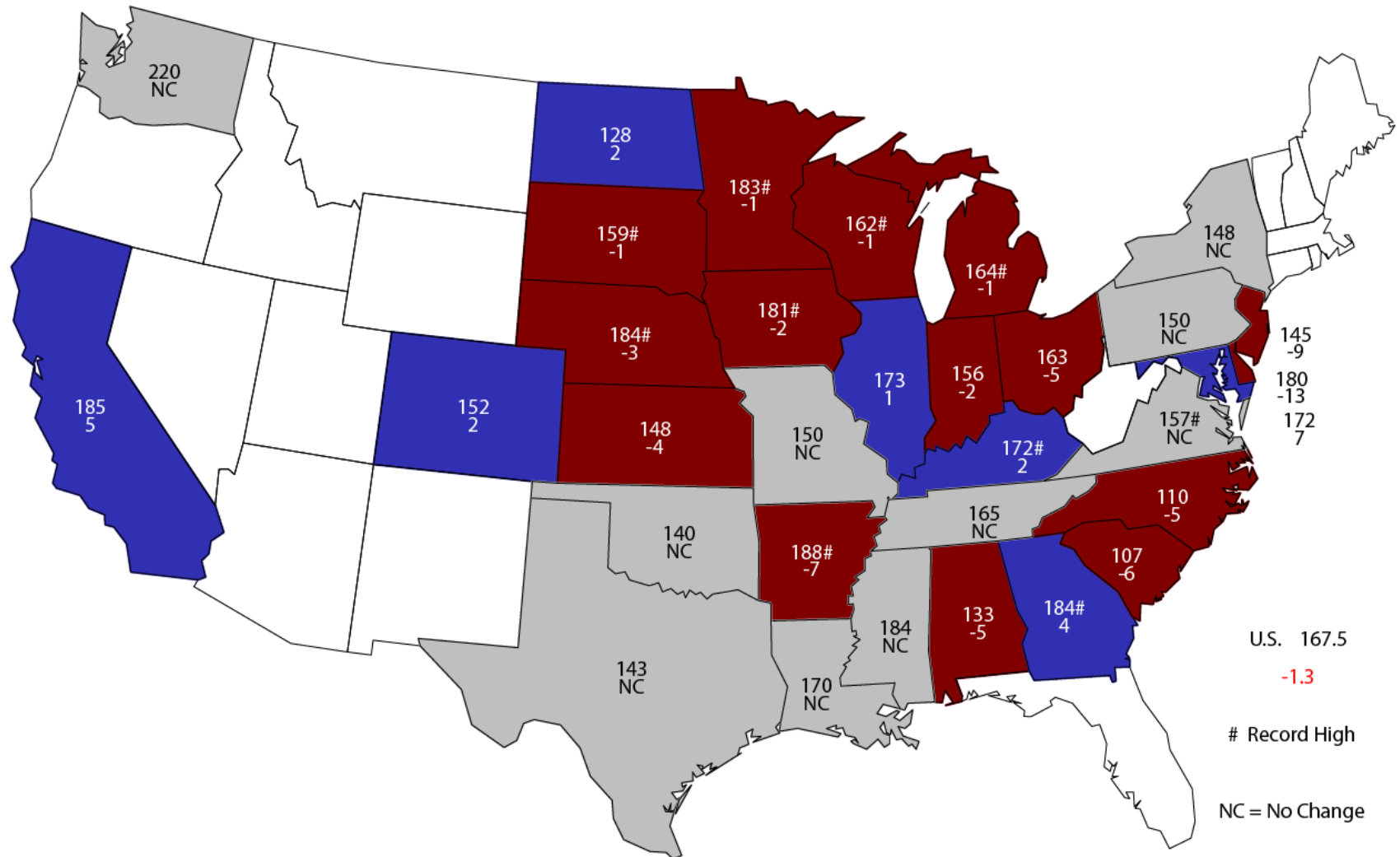
Corn for Grain Production United States

Billion Bushels



September 1, 2015 Corn Yield

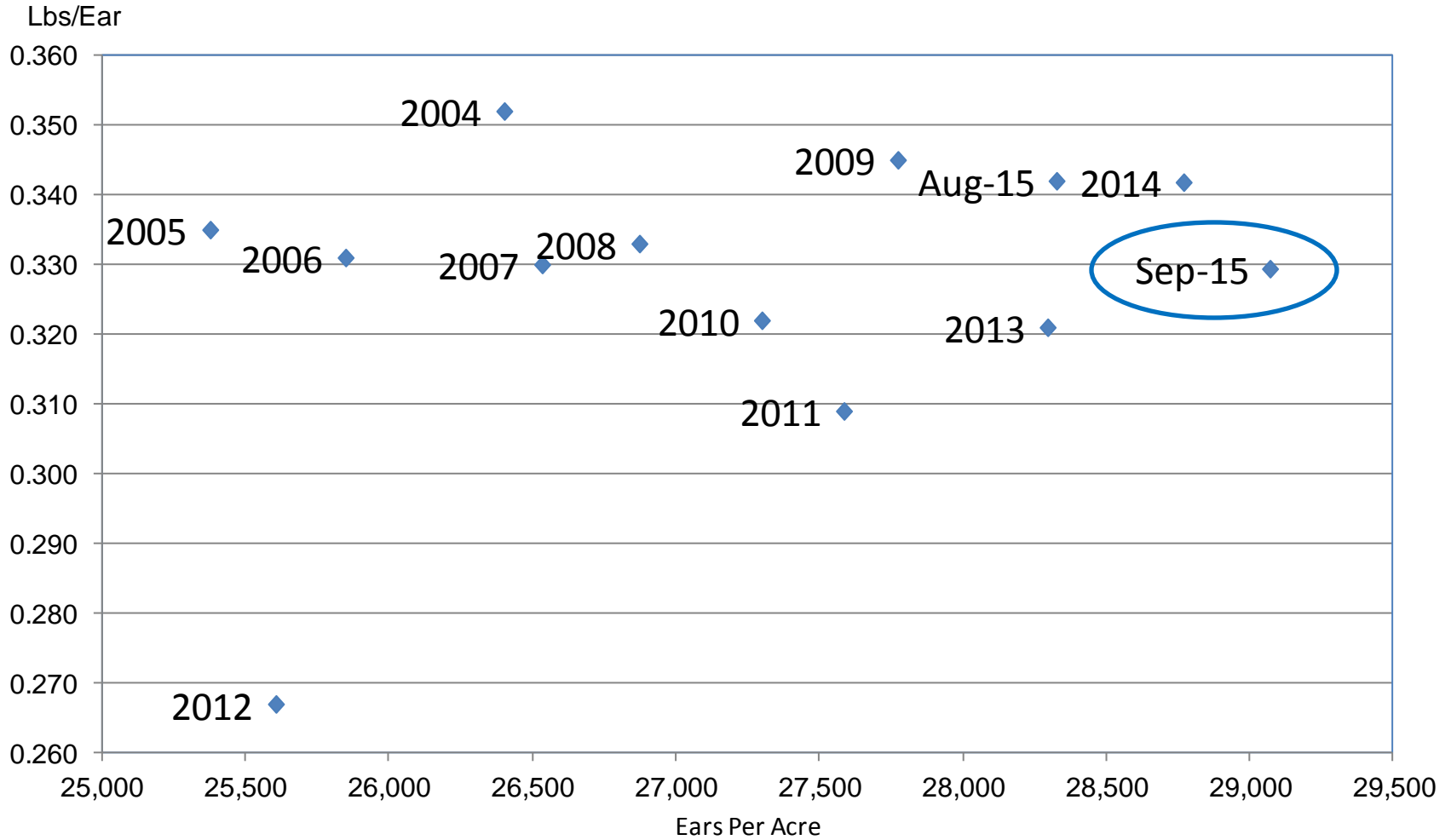
Bushels and Change From Previous Month



U.S. 167.5
 -1.3
 # Record High
 NC = No Change

Corn Objective Yield Region

Ears Per Acre vs. Implied Ear Weight



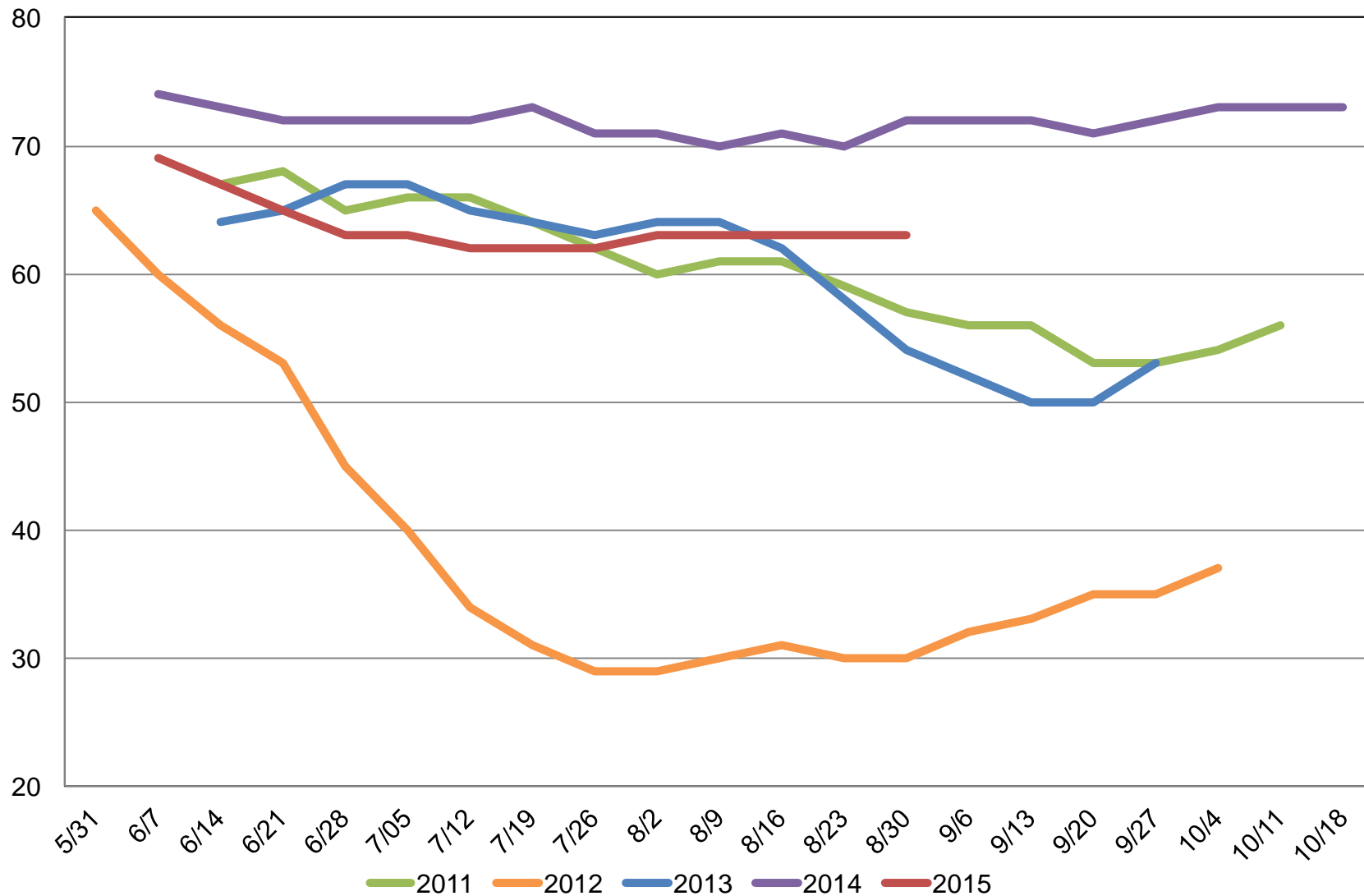
$$\text{Implied Ear Weight} = (\text{Published Yield} * 56) / \text{Ears}$$



U.S. Soybean Condition

Percent Rated Good to Excellent

Percent





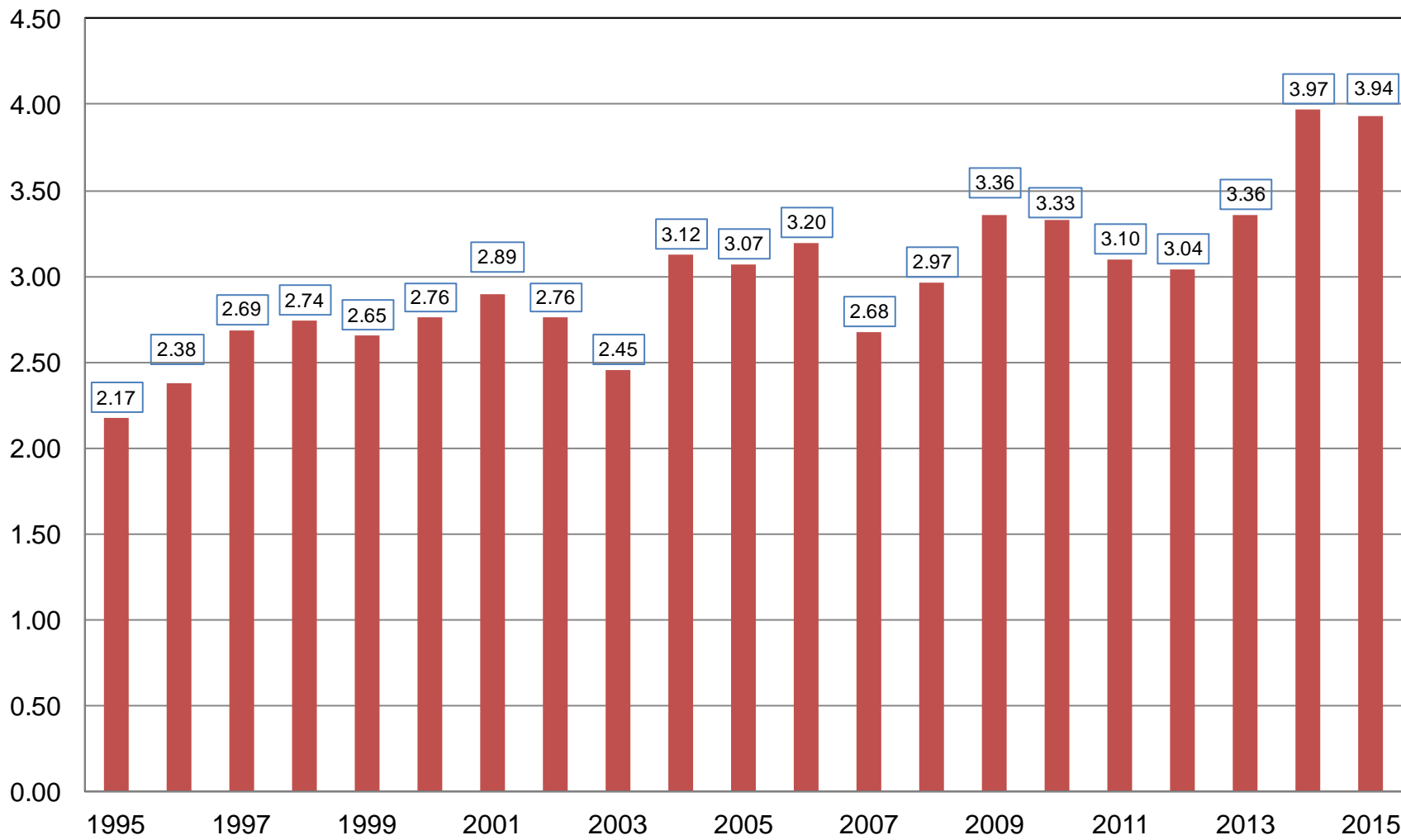
September 2015 Crop Production

Crop	Unit	September 2015	% Change From Previous Forecast	% Change From Previous Season
Soybeans				
Harvested	Mil Ac	83.5	NC	+0.6
Yield	Bu/Ac	47.1	+0.4	-1.5
Production	Bil Bu	3.94	+0.5	-0.8



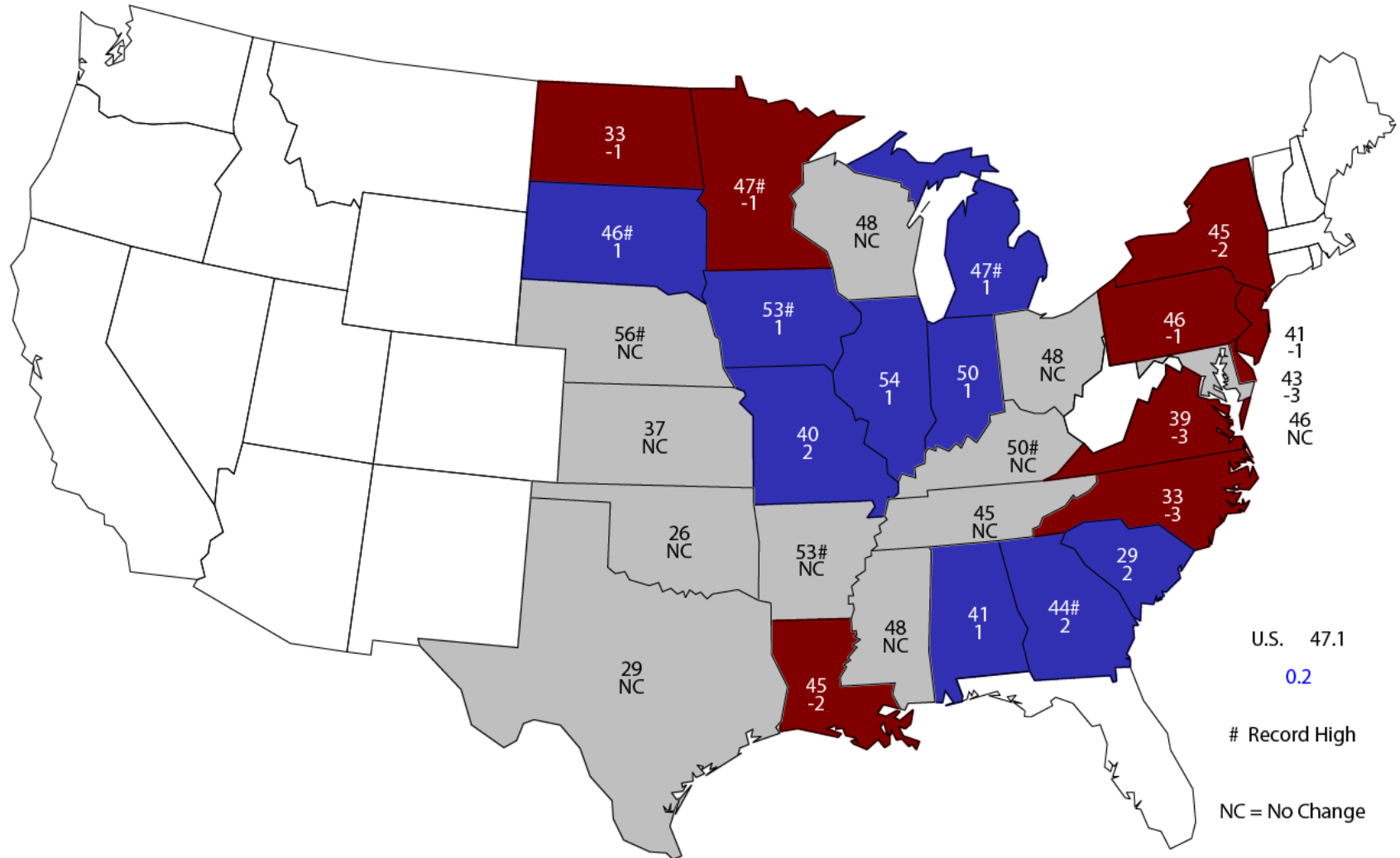
Soybean Production United States

Billion Bushels



September 1, 2015 Soybean Yield

Bushels and Change From Previous Month

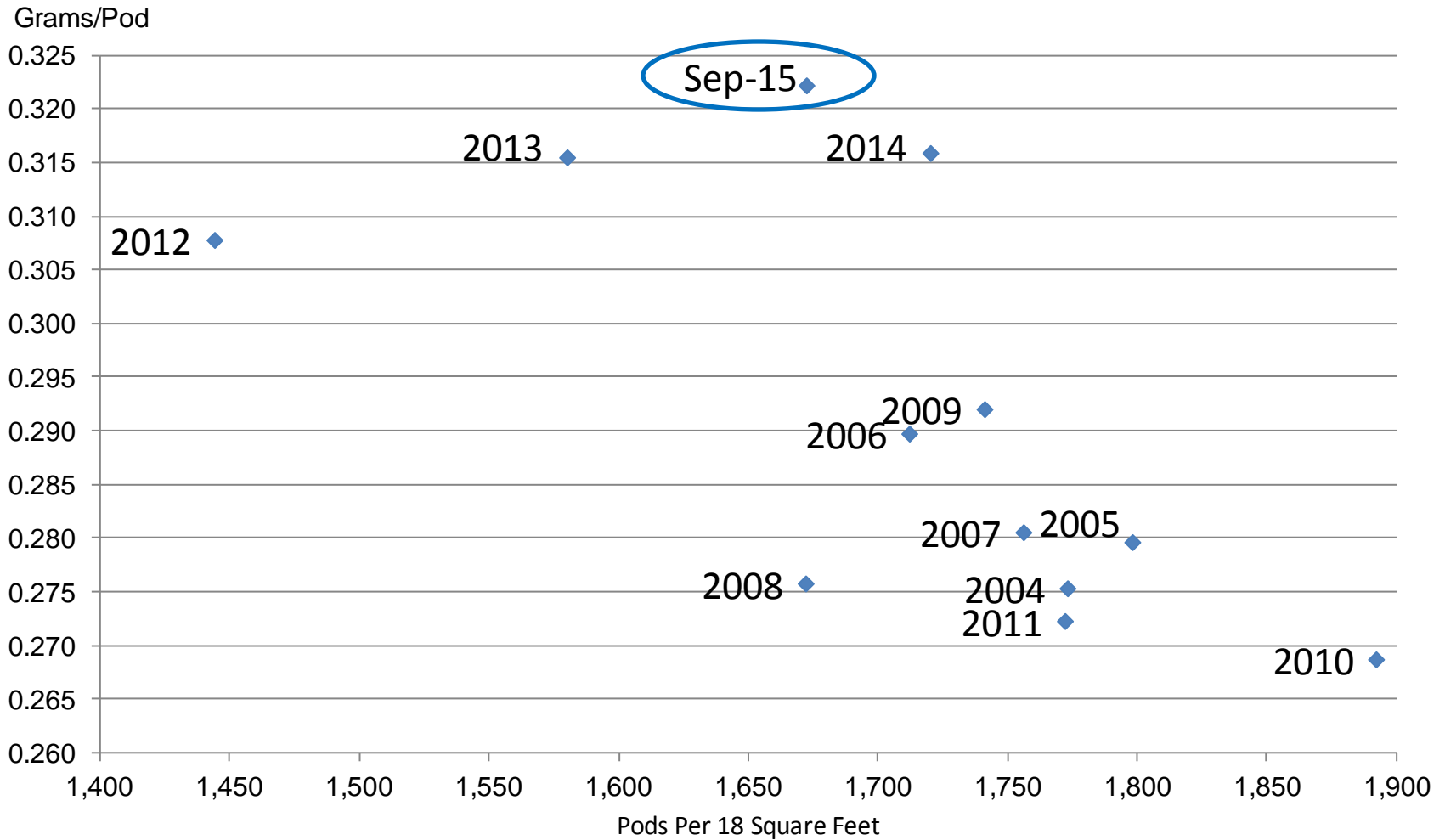


U.S. 47.1
 0.2
 # Record High
 NC = No Change



Soybean Objective Yield Region

Pods Per 18 Square Feet Vs. Implied Pod Weight



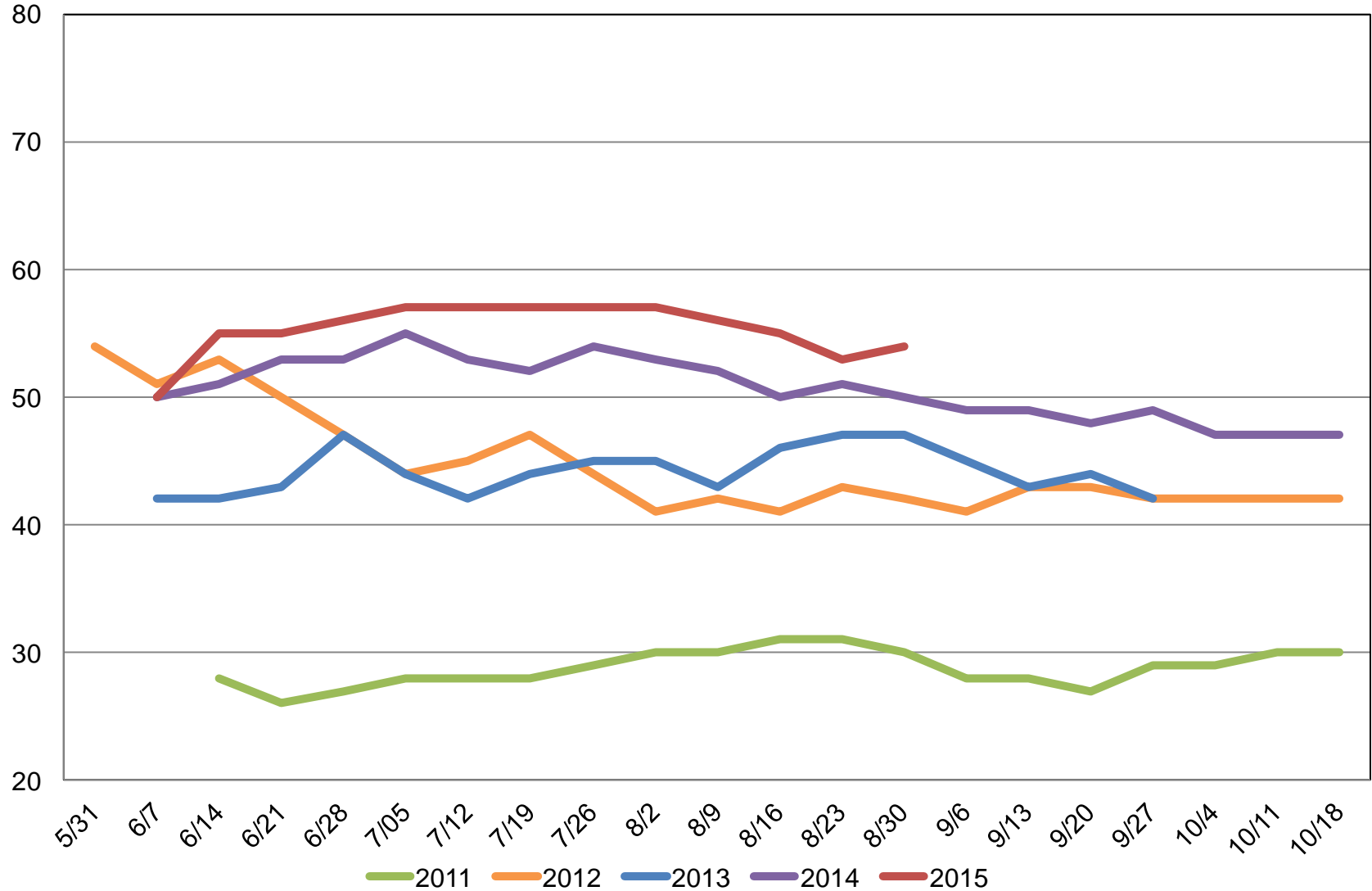
Implied Pod Weight = (Published Yield / Pods)/0.0889



U.S. Cotton Condition

Percent Rated Good to Excellent

Percent





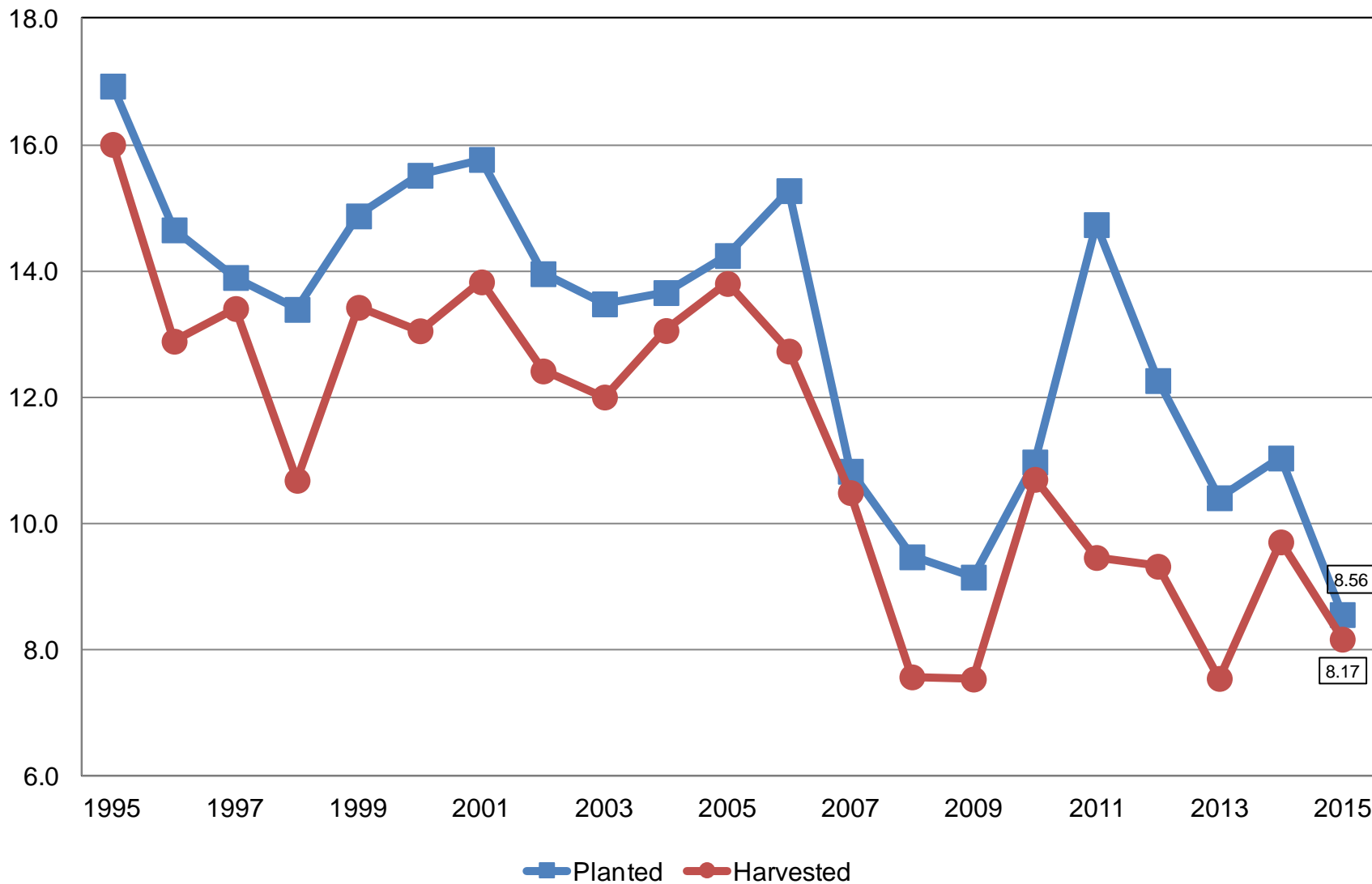
September 2015 Crop Production

Crop	Unit	September 2015	% Change From Previous Forecast	% Change From Previous Season
All Cotton				
Planted	Mil Ac	8.56	-3.8	-22.5
Harvested	Mil Ac	8.17	+3.4	-12.6
Yield	Lb/Ac	789	-0.8	-5.8
Production	Mil Bls	13.4	+2.6	-17.7



All Cotton Acres United States

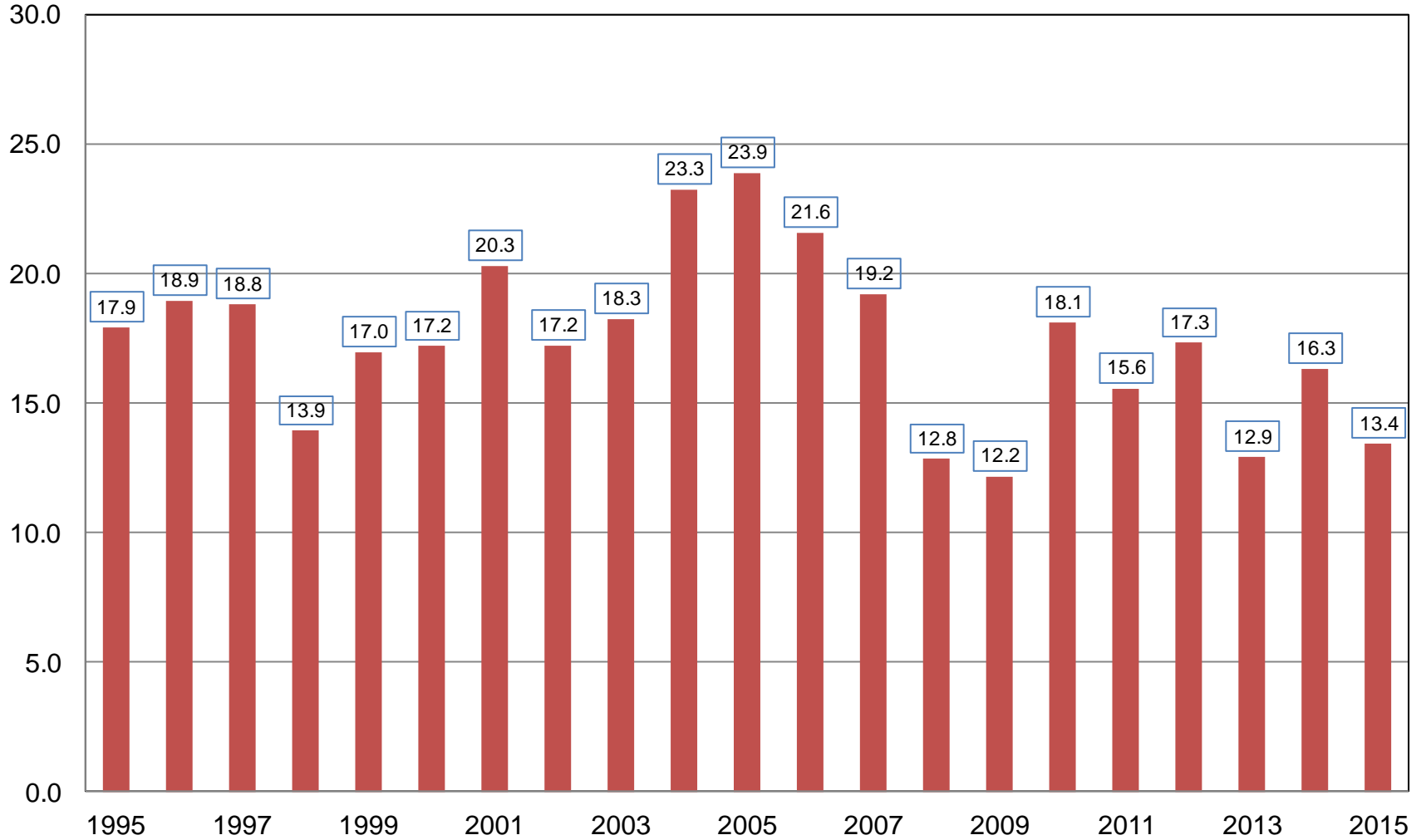
Million Acres





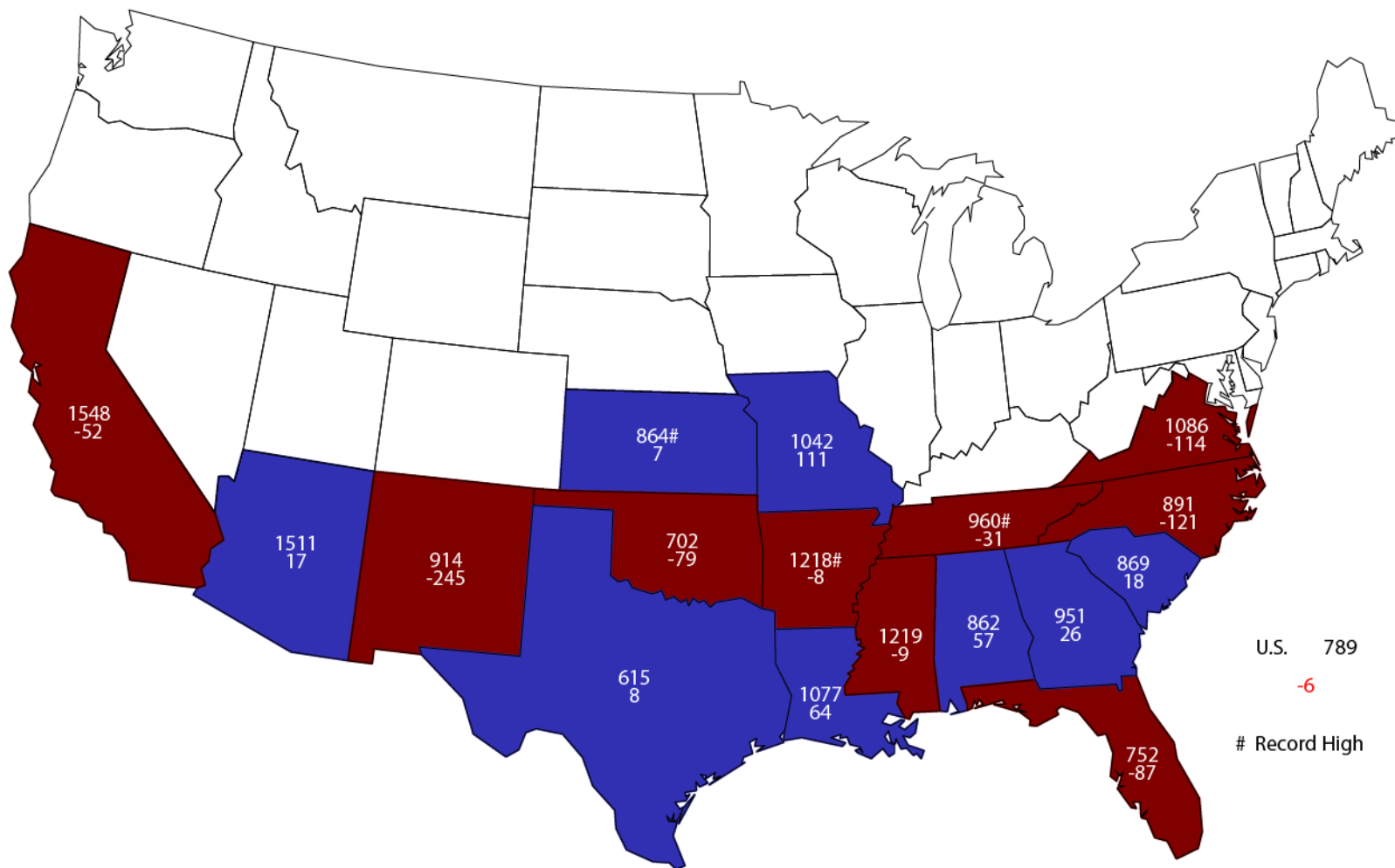
All Cotton Production United States

Million Bales



September 1, 2015 All Cotton Yield

Pounds and Change From Previous Month





September 2015 Crop Production

Crop	Unit	September 2015	% Change From Previous Estimate	% Change From Previous Season
Rice				
Planted	Mil Ac	2.61	-5.6	-11.2
Harvested	Mil Ac	2.57	-6.3	-12.0
Yield	Lbs/Ac	7,374	-1.3	-2.6
Production	Mil Cwt	190	-7.6	-14.3



September 2015 Crop Production

Crop	Unit	September 2015	% Change From Previous Estimate	% Change From Previous Season
Peanuts				
Planted	Mil Ac	1.62	+1.3	+19.6
Harvested	Mil Ac	1.58	+1.1	+19.4
Yield	Lbs/Ac	3,996	+1.2	+1.6
Production	Bil Lbs	6.32	+2.3	+21.3



September 2015 Crop Production

Crop	Unit	September 2015	% Change From Previous Forecast	% Change From Previous Season
Sorghum	Mil Bu	574	+0.3	+32.8
All Tobacco	Mil Lbs	709	-1.1	-19.1
Sugarbeets	Mil Tons	34.6	+1.1	+10.2
Sugarcane	Mil Tons	31.2	-3.0	+2.5



September 2015 Crop Production

Crop	Unit	September 2015	% Change From Previous Forecast	% Change From Previous Season
Navel Oranges (CA)	Mil Tons	1.72	NA	+8.9
Hazelnuts (OR)	Thou Tons	39.0	NA	+8.3
Walnuts (CA)	Thou Tons	575	NA	+0.9



Upcoming Reports

Release Date	Report Title
September 17	Citrus Fruits Potatoes
September 18	Cattle on Feed
September 25	Hogs & Pigs
September 29	Ag Prices
September 30	Grain Stocks Small Grains Summary
October 1	CAIR: Cotton CAIR: Grain Crushings CAIR: Oilseed Crushings CAIR: Fats & Oils
October 9	Crop Production



United States Department of Agriculture
National Agricultural Statistics Service

All Reports Available At
www.nass.usda.gov

For Questions
202-720-2127
800-727-9540
nass@nass.usda.gov