



United States Department of Agriculture  
**National Agricultural Statistics Service**

---

---

**Small Grains Summary**  
**Grain Stocks**  
Executive Summary

Lance Honig, Chief  
Crops Branch



# Contents

Field Crops	Grain Stocks	Oilseed Stocks
Wheat	Corn	Soybeans
Barley	Wheat	Sunflower
Oats	Barley	Safflower
Rye	Oats	Mustard Seed
	Sorghum	



# Survey Overview

	September Ag Survey	Off- Farm Grain Stocks Survey
Survey Type	Farmer Reported	Off-Farm Grain Stock Facilities
Collection Method	Mail, Phone, Internet, Personal Interview	Mail, Phone, Internet, Personal Interview
Crops Included	Barley, Oats, Rye, Wheat	Barley, Corn, Mustard Seed, Oats, Soybean, Safflower, Sorghum, Sunflower, Wheat
States	All Except Hawaii	All States Except AK, HI, and NV
Sample Size	66,110	8,701
Collection Period	August 24 – September 16	August 24 – September 17



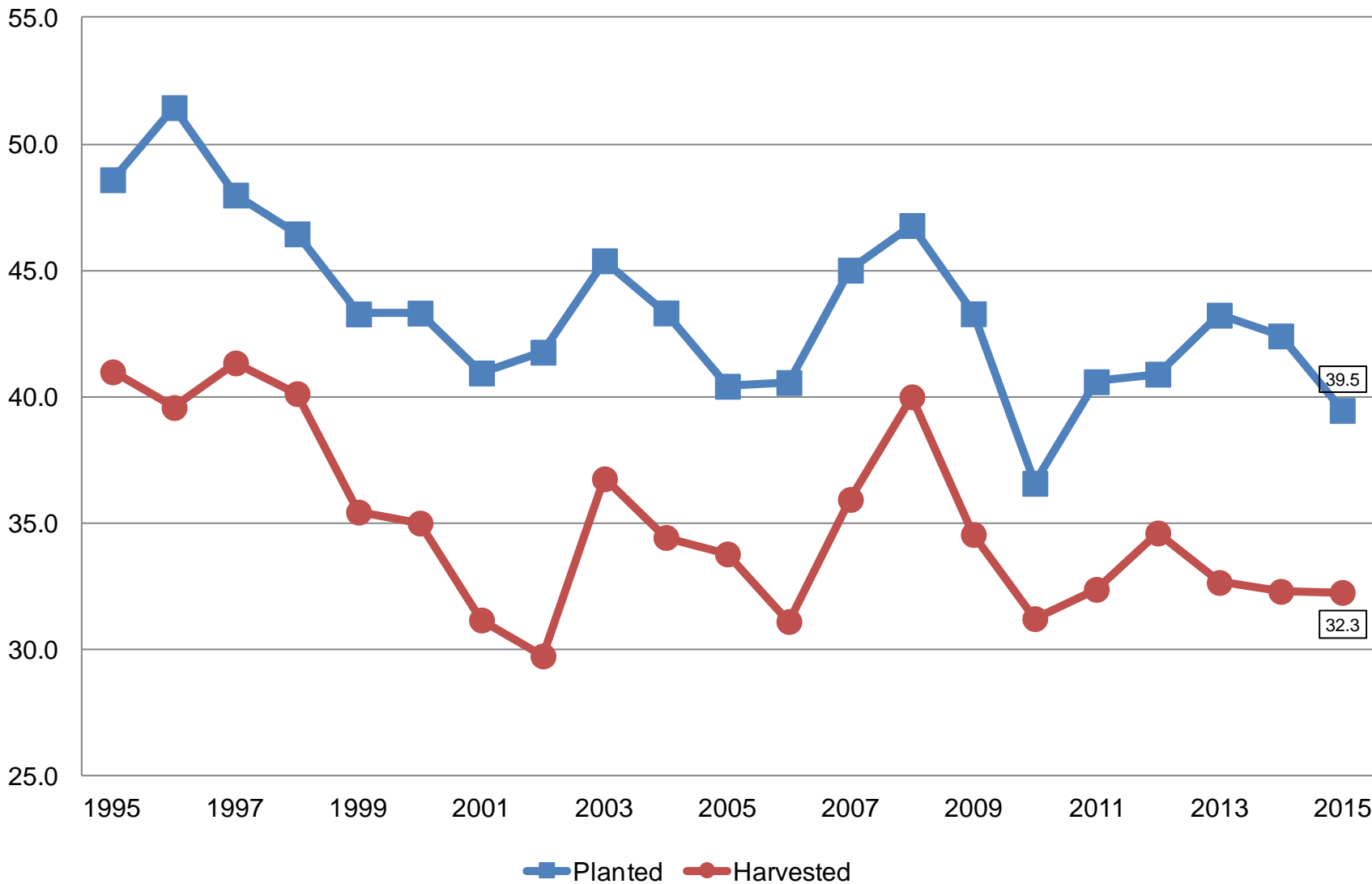
# Small Grains Annual Summary

Crop	Unit	September 2015	% Change From Previous Estimate	% Change From Previous Season
Wheat, Winter				
Planted	Mil Ac	39.5	-2.9	-7.0
Harvested	Mil Ac	32.3	-3.2	-0.1
Yield	Bu/Ac	42.5	-1.6	-0.2
Production	Bil Bu	1.37	-4.7	-0.5



# Winter Wheat Acres United States

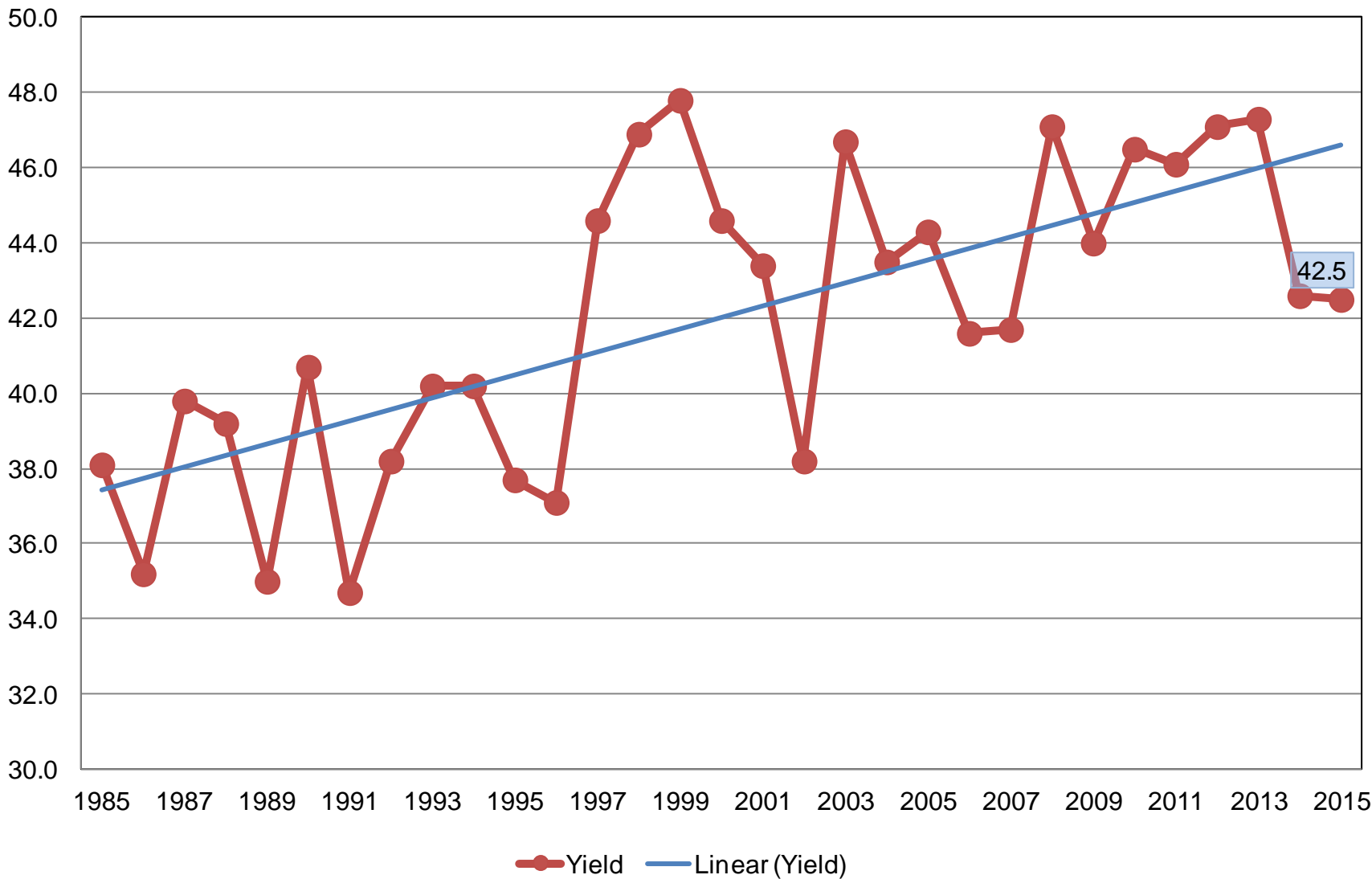
Million Acres



# Winter Wheat Yield

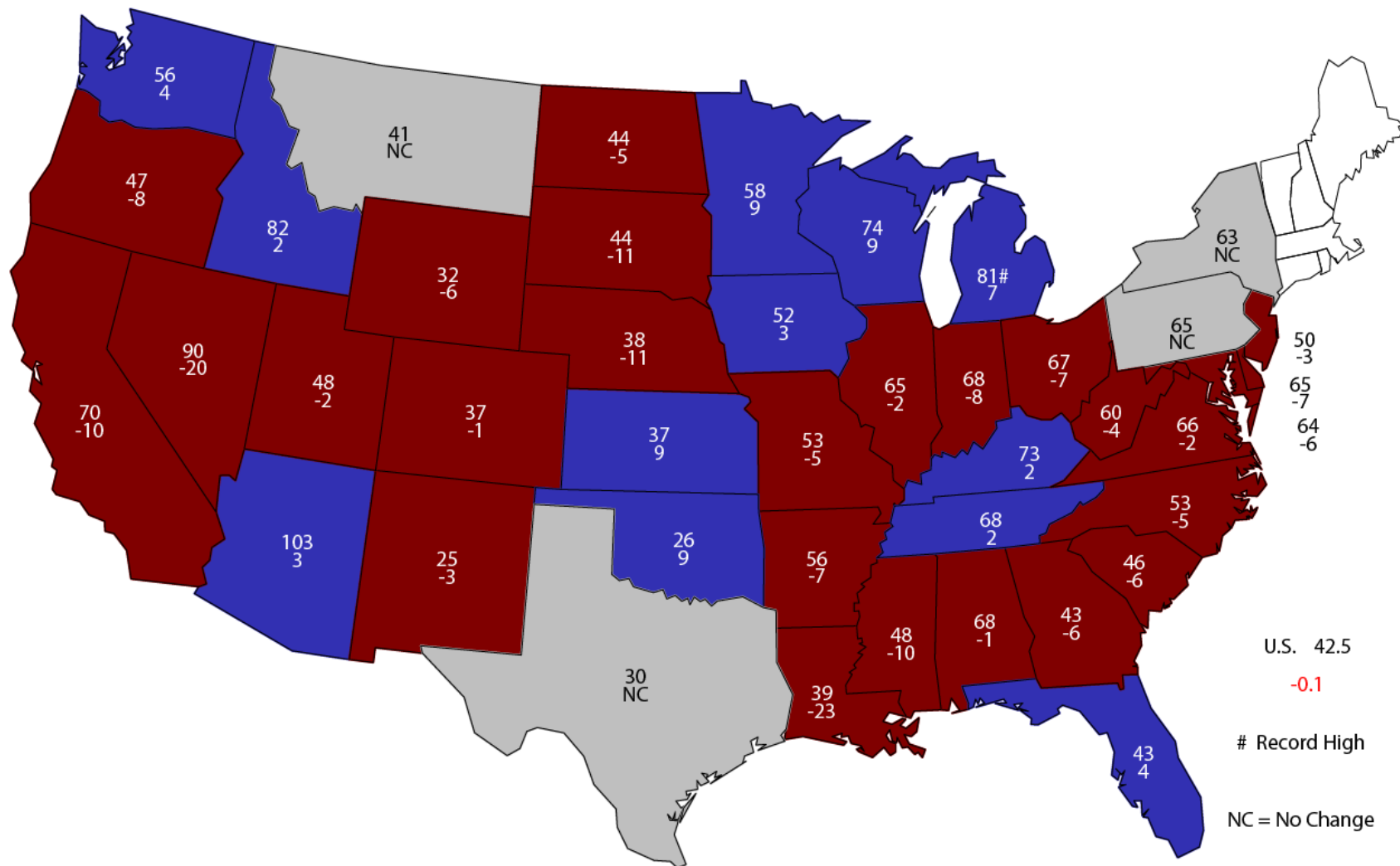
## United States

Bushels per Acre



# 2015 Winter Wheat Yield

## Bushels and Change From Previous Year



U.S. 42.5

-0.1

# Record High

NC = No Change



# Small Grains Annual Summary

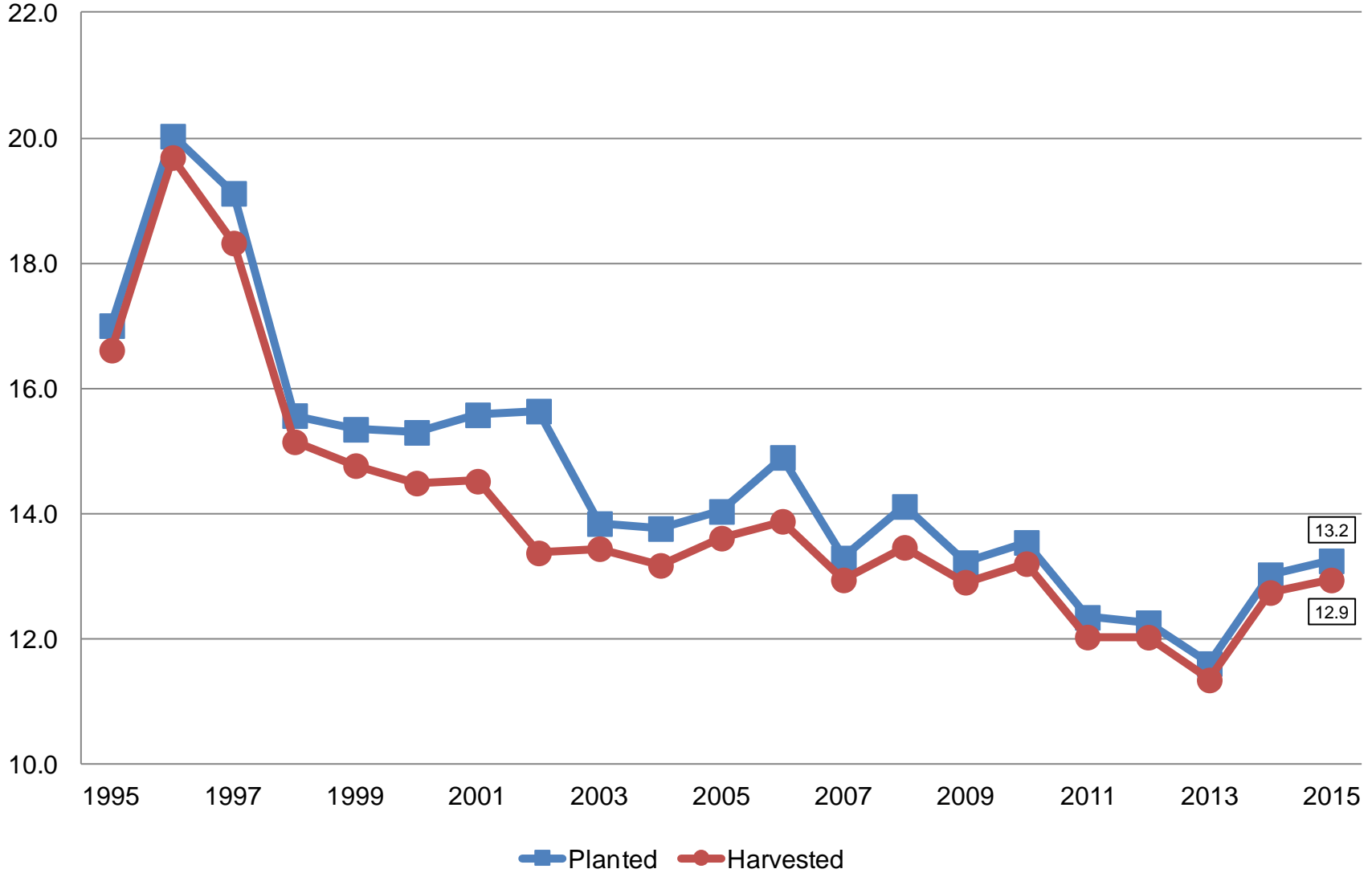
Crop	Unit	September 2015	% Change From Previous Estimate	% Change From Previous Season
Wheat, Spring				
Planted	Mil Ac	13.2	-1.9	+1.7
Harvested	Mil Ac	12.9	-2.1	+1.6
Yield	Bu/Ac	46.3	-1.5	-0.9
Production	Mil Bu	599	-3.5	+0.7





# Other Spring Wheat Acres United States

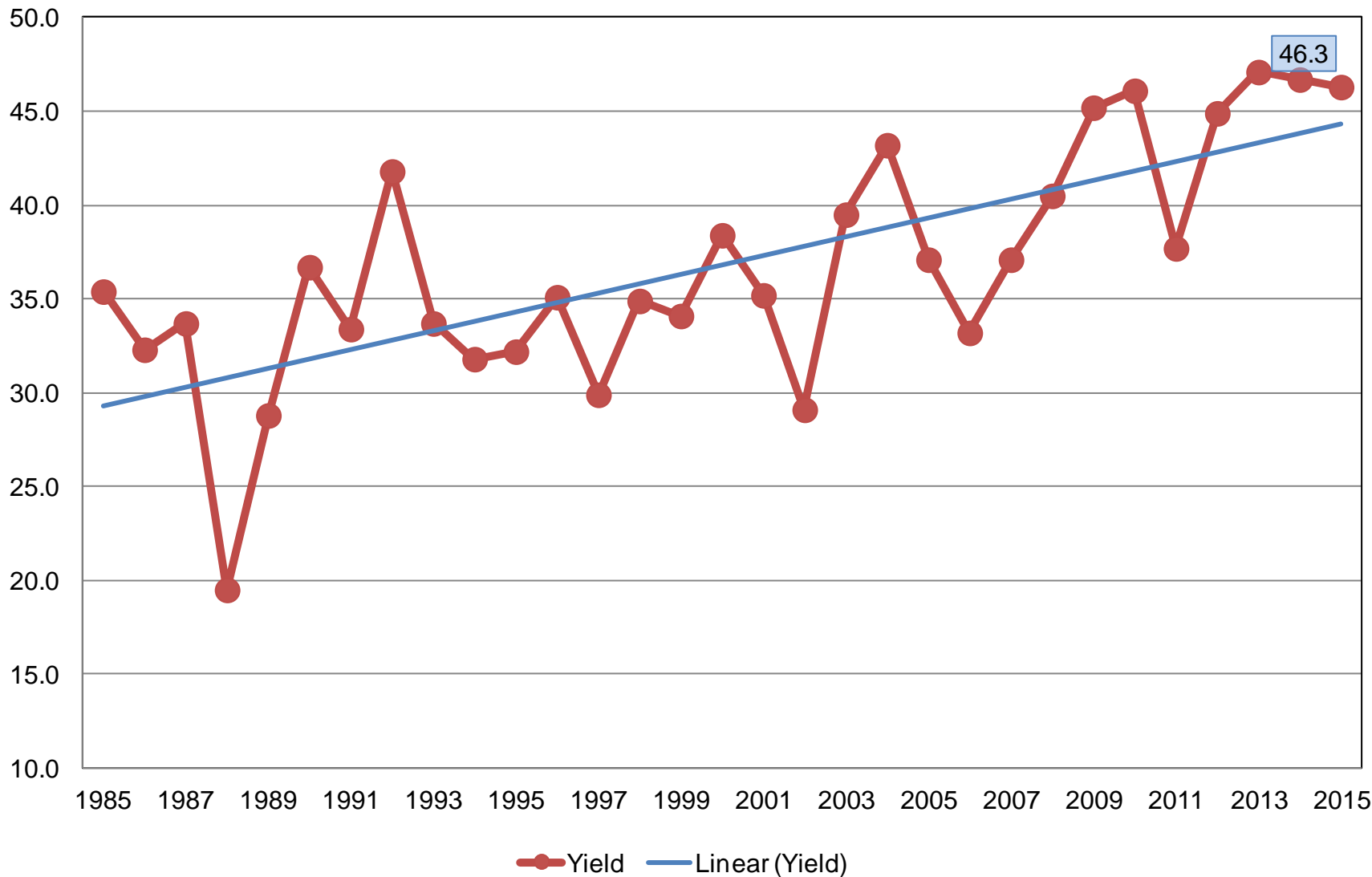
Million Acres



# Other Spring Wheat Yield

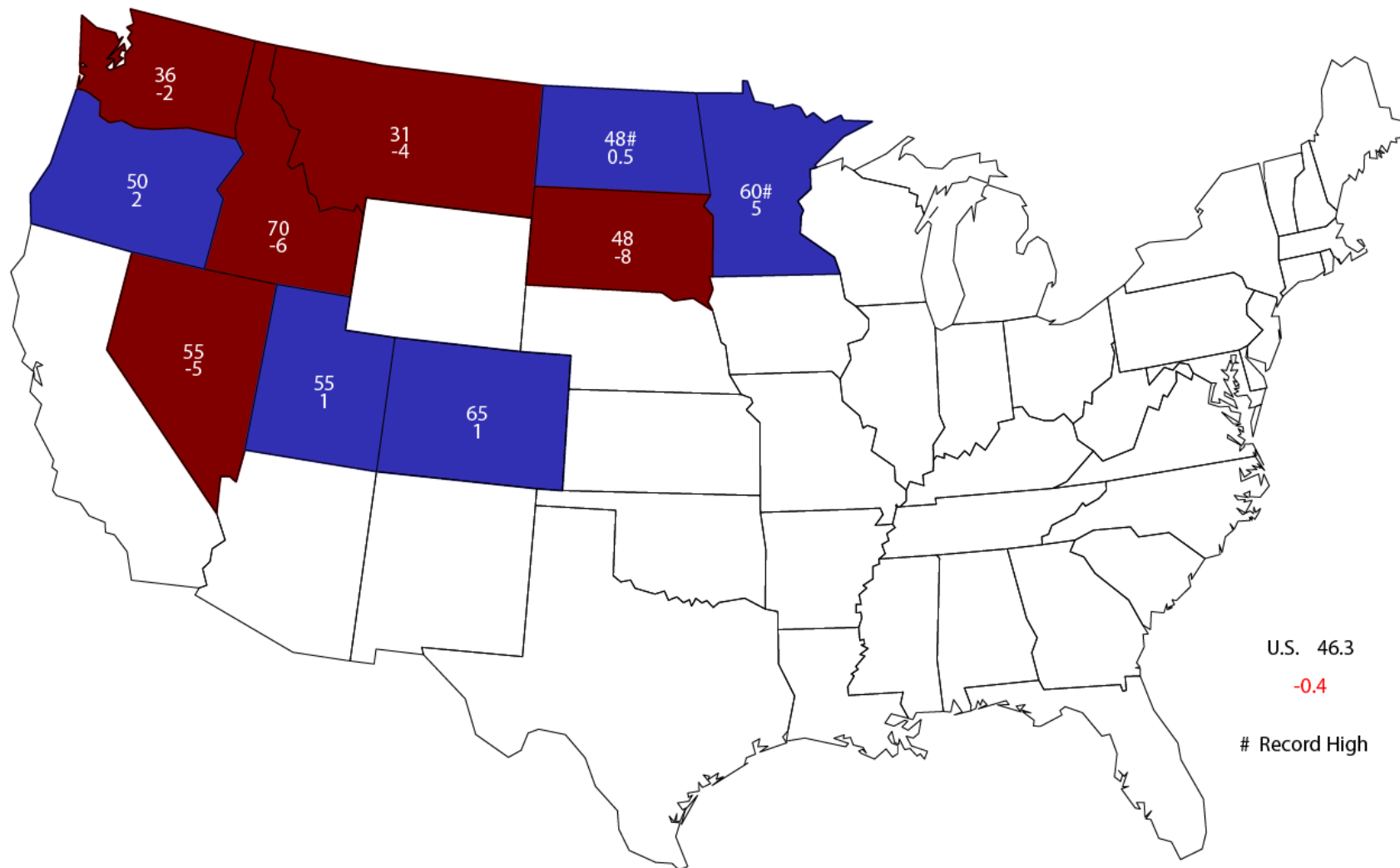
## United States

Bushels per Acre



# 2015 Other Spring Wheat Yield

## Bushels and Change From Previous Year



U.S. 46.3

-0.4

# Record High



# Small Grains Annual Summary

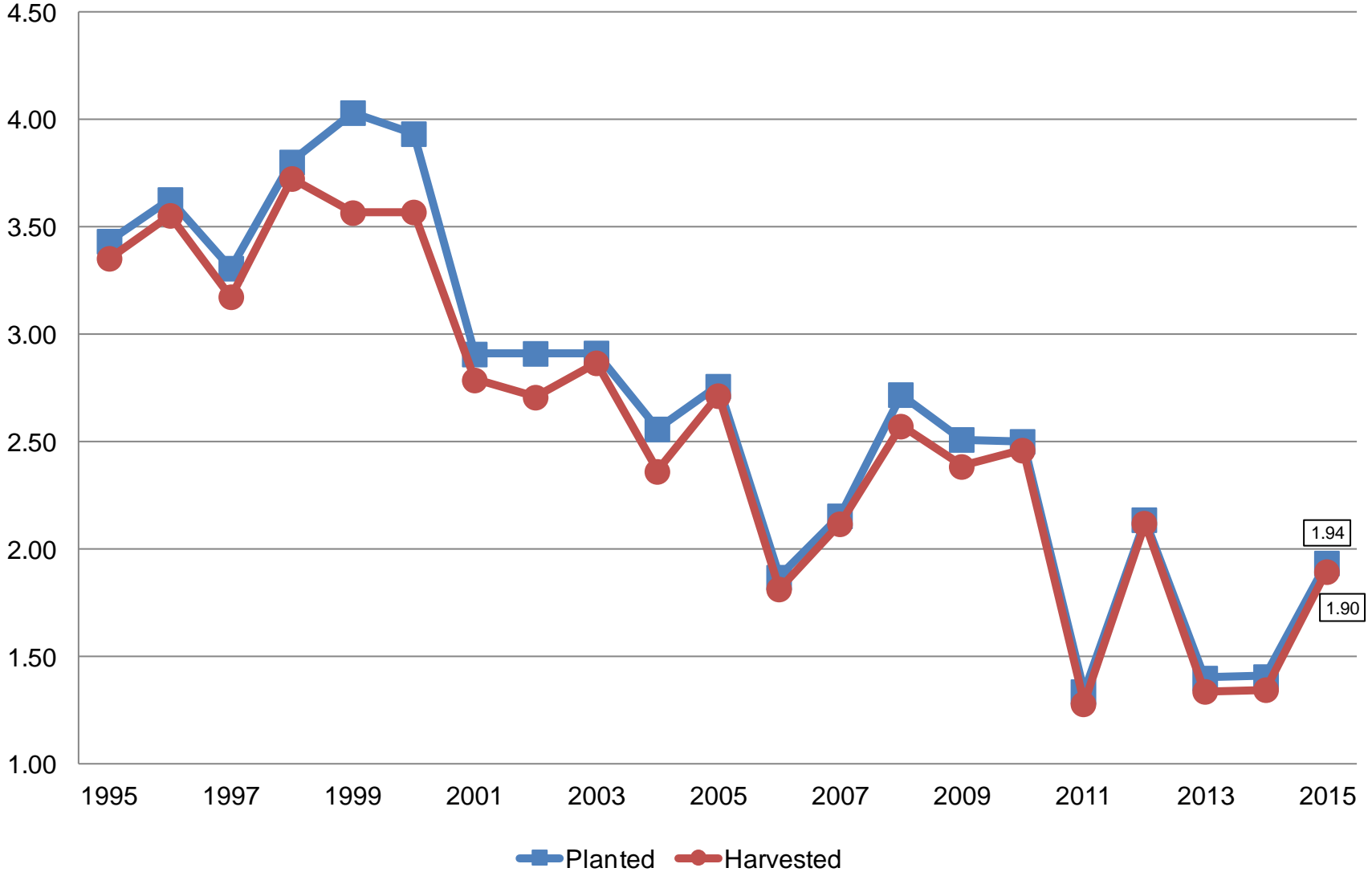
Crop	Unit	September 2015	% Change From Previous Estimate	% Change From Previous Season
Wheat, Durum				
Planted	Mil Ac	1.94	-0.9	+37.6
Harvested	Mil Ac	1.90	-0.6	+40.9
Yield	Bu/Ac	43.5	+8.2	+8.2
Production	Mil Bu	82.5	+7.4	+52.6



# Durum Wheat Acres

## United States

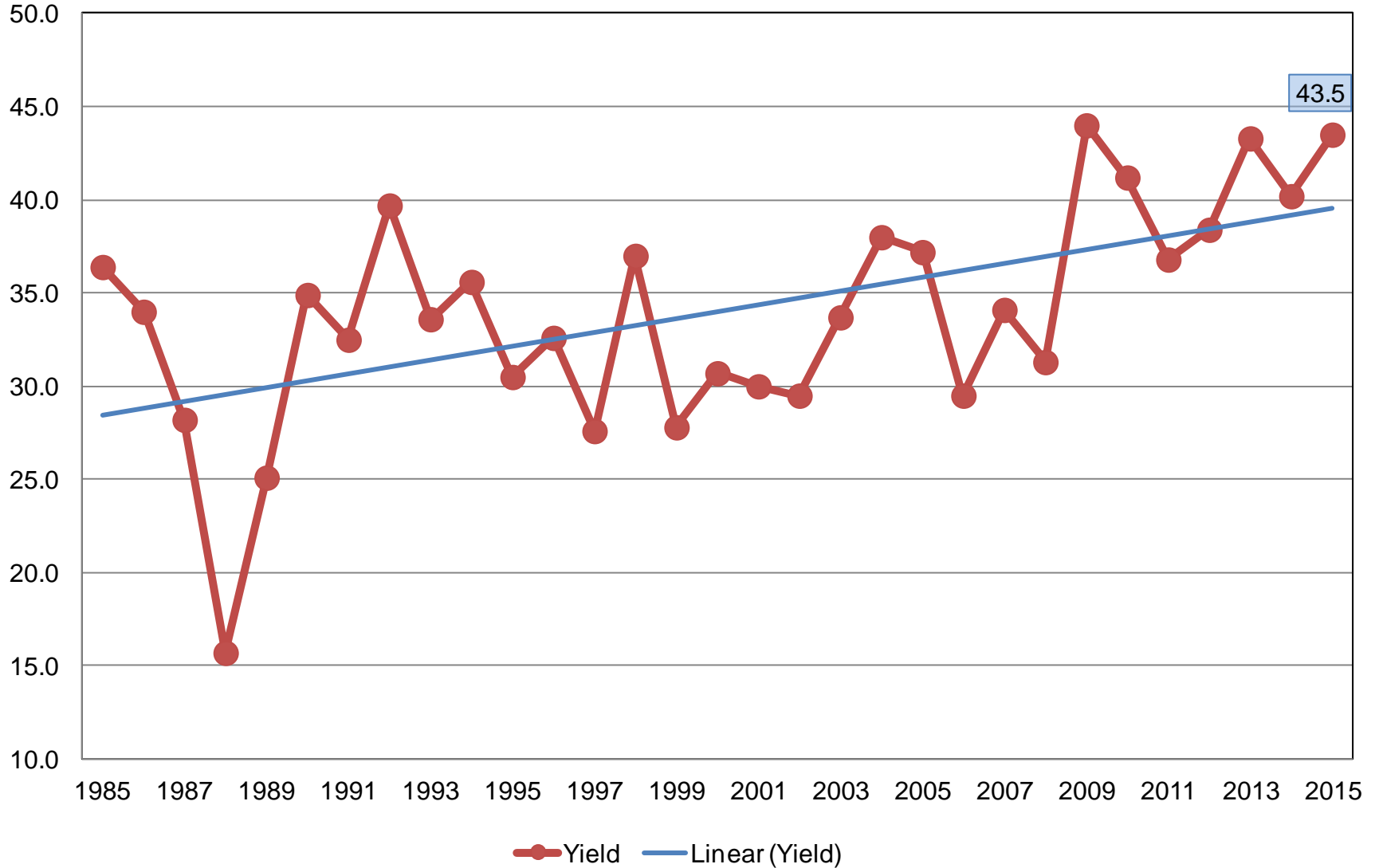
Million Acres





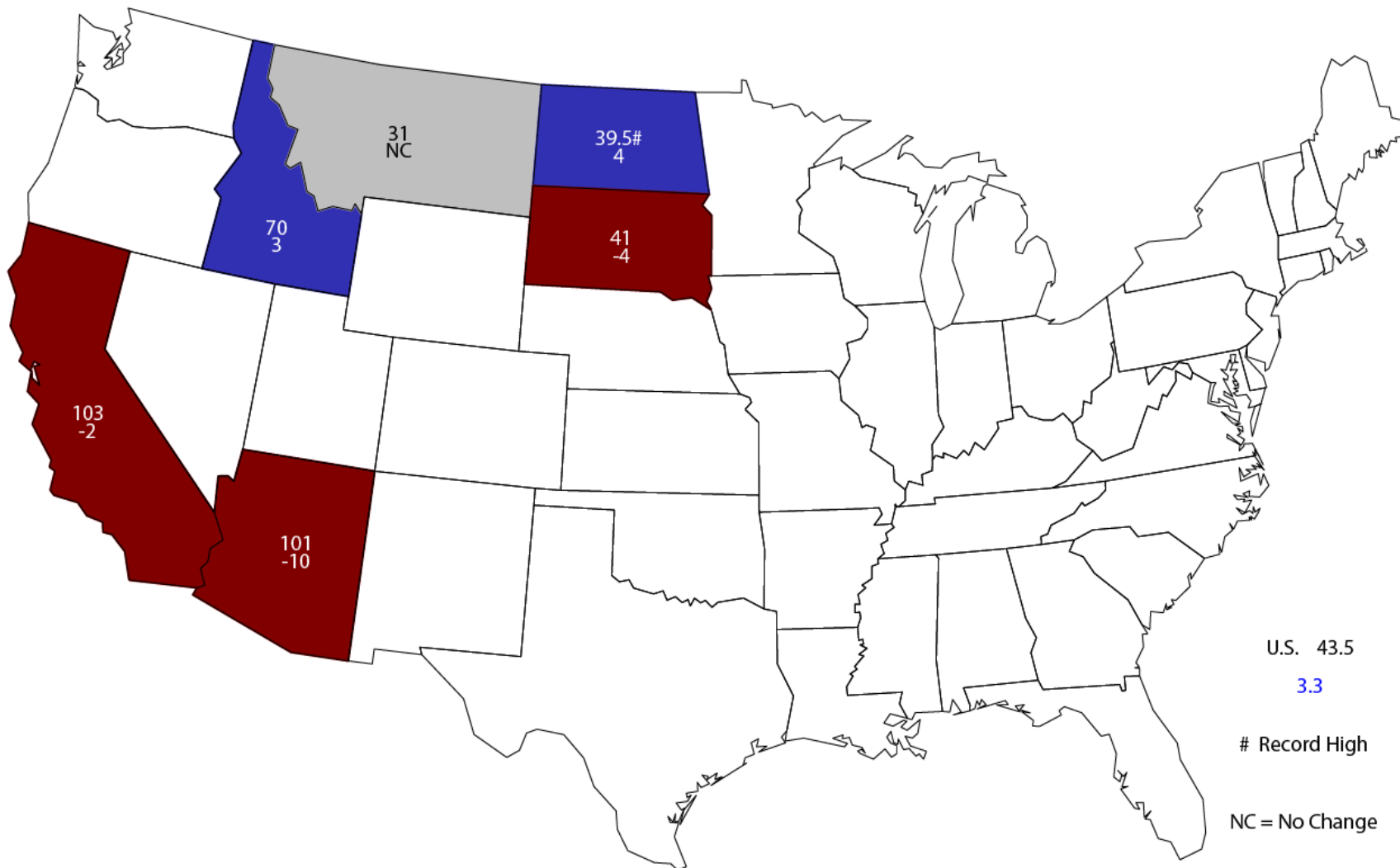
# Durum Wheat Yield United States

Bushels per Acre



# 2015 Durum Wheat Yield

## Bushels and Change From Previous Year



U.S. 43.5  
3.3  
# Record High  
NC = No Change



# Small Grains Annual Summary

Crop	Unit	September 2015	% Change From Previous Estimate	% Change From Previous Season
Wheat, All				
Planted	Mil Ac	54.6	-2.6	-3.9
Harvested	Mil Ac	47.1	-2.8	+1.5
Yield	Bu/Ac	43.6	-1.1	-0.2
Production	Bil Bu	2.05	-3.9	+1.3





# Small Grains Annual Summary

Crop	Unit	September 2015	% Change From Previous Estimate	% Change From Previous Season
Barley				
Planted	Mil Ac	3.56	+4.2	+17.4
Harvested	Mil Ac	3.11	+6.5	+24.5
Yield	Bu/Ac	68.9	-4.0	-5.2
Production	Mil Bu	214	+2.2	+18.0



# Small Grains Annual Summary

Crop	Unit	September 2015	% Change From Previous Estimate	% Change From Previous Season
Oats				
Planted	Mil Ac	3.09	+0.8	+12.2
Harvested	Mil Ac	1.28	+4.6	+23.3
Yield	Bu/Ac	70.2	+0.3	+3.4
Production	Mil Bu	89.5	+4.8	+27.5



# Small Grains Annual Summary

Crop	Unit	September 2015	% Change From Previous Estimate	% Change From Previous Season
Rye				
Planted	Mil Ac	1.57	+7.1	+9.4
Harvested	Mil Ac	0.360	+14.6	+39.5
Yield	Bu/Ac	31.9	NA	+14.3
Production	Mil Bu	11.5	NA	+59.9



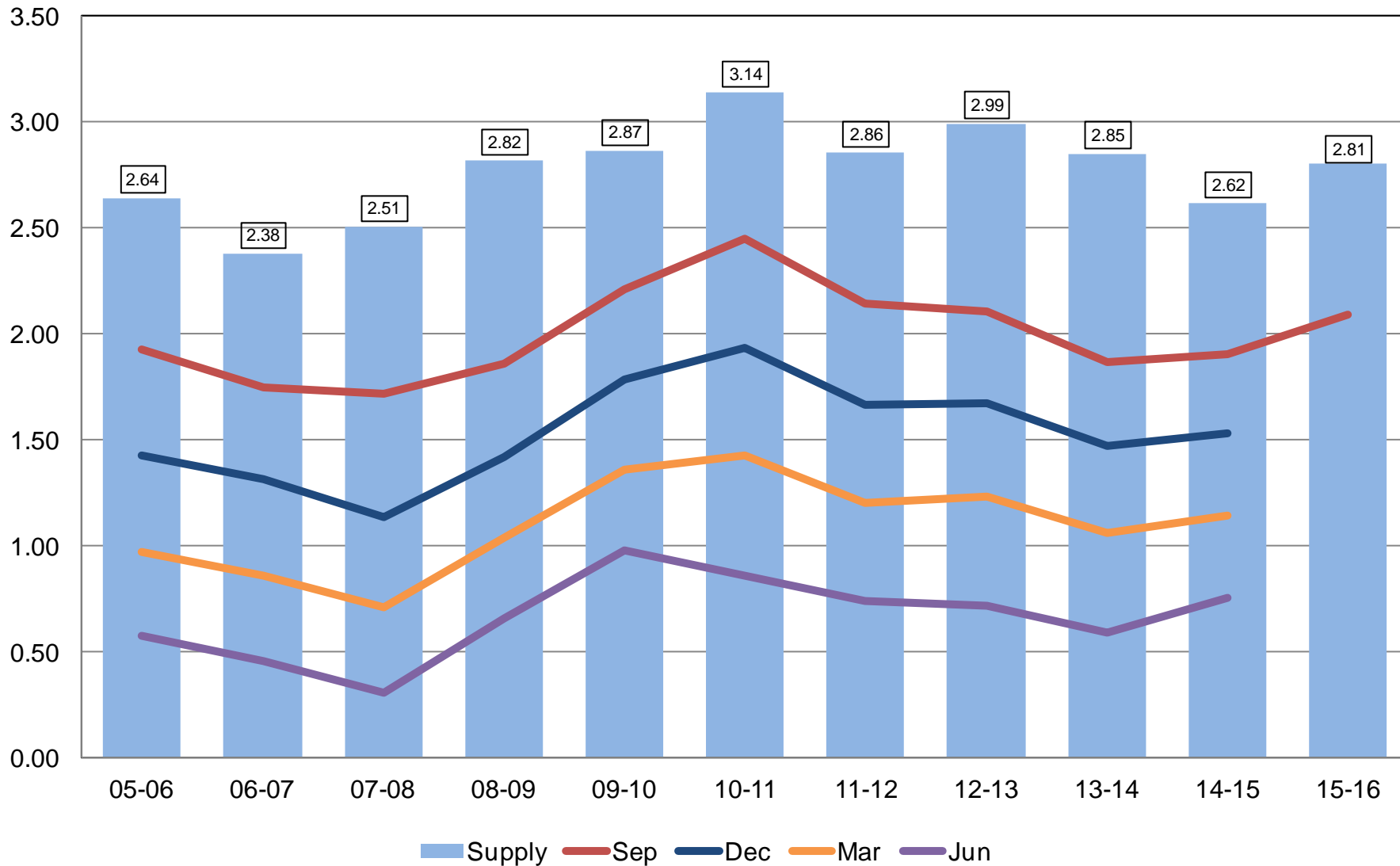
# Percent of Acres Left to be Harvested

## United States

Crop	2013	2014	2015
	<i>Percent</i>		
Other Spring Wheat	22.0	49.7	4.8
Durum Wheat	58.4	70.0	9.2
Barley	13.5	23.6	3.0
Oats	18.4	26.7	8.6

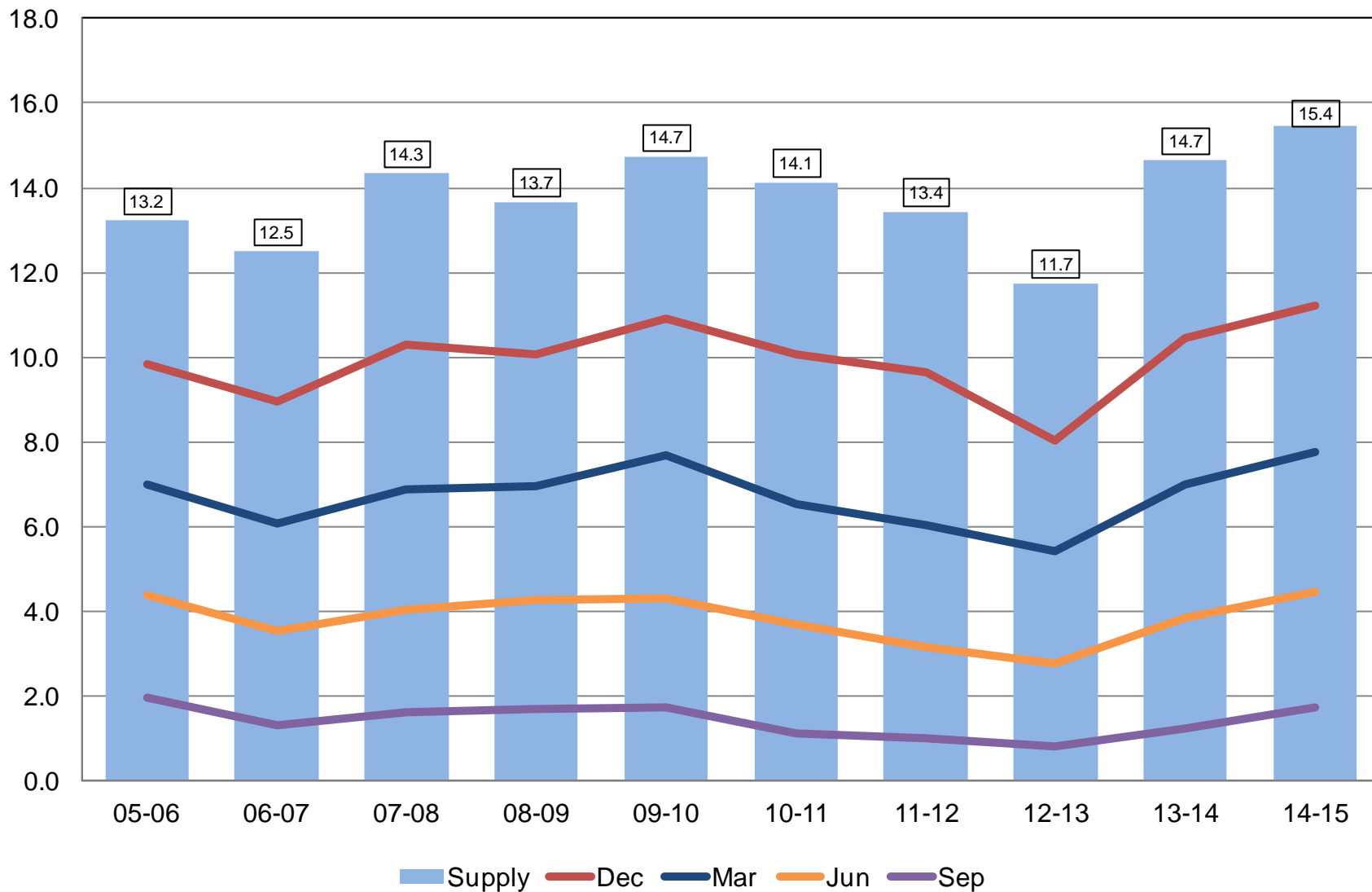
# All Wheat Stocks United States

Billion Bushels



# Corn Stocks United States

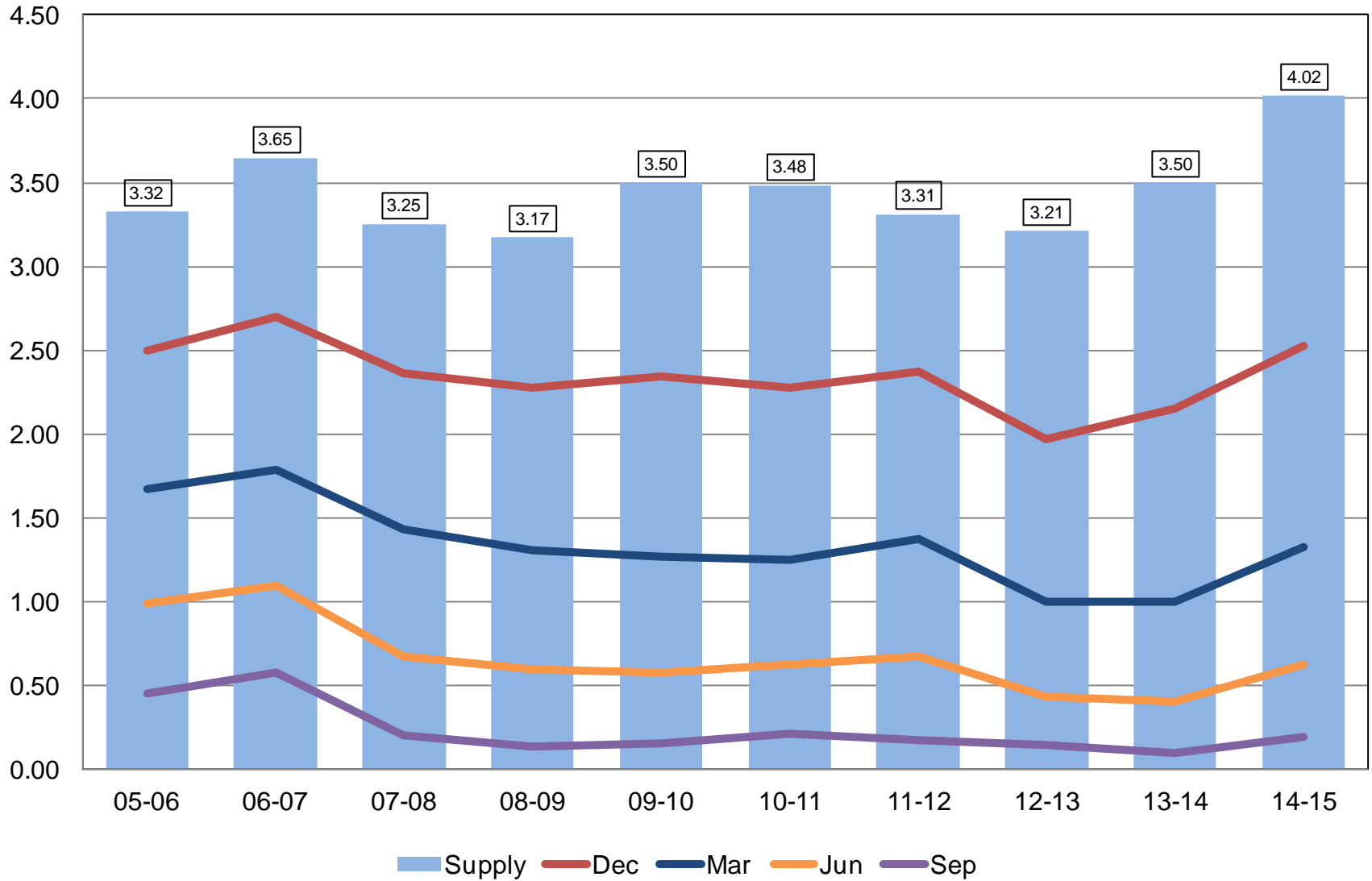
Billion Bushels





# Soybean Stocks United States

Billion Bushels





# 2014 Soybean Crop

	Previous Estimates	Sept 30 Estimates	Change
	<i>Million Bushels</i>		
Sept 1, 2014 Beginning Stocks	92	92	NC
2014 Production	3,969	3,927	-42
Imports	*33	*33	NC
<b>Total Supply</b>	<b>4,094</b>	<b>4,052</b>	<b>-42</b>
Crushings	*1,870	*1,870	NC
Exports	*1,835	*1,835	NC
Seed	*98	*98	NC
Measured Disappearance	*3,803	*3,803	NC
Ending Stocks	*210	191	-19
Residual	*81	58	-23

\*WAOB Forecast – September WASDE Report





# September 1, 2015 Grain Stocks

Crop	Unit	September 2015	% Change From Previous Estimate	% Change From Previous Year
Stocks				
Barley	Mil Bu	219	NA	+21.5
Oats	Mil Bu	93.3	NA	+25.5
Sorghum	Mil Bu	18.4	NA	-45.9



# September 1, 2015 Oilseed Stocks

Crop	Unit	September 2015	% Change From Previous Estimate	% Change From Previous Year
Stocks				
All Sunflower	Mil Lbs	238	NA	+19.0
Safflower	Mil Lbs	17.1	NA	+87.4
Mustard Seed	Mil Lbs	4.67	NA	-55.2



# Upcoming Reports

Release Date	Report Title
October 1	CAIR: Cotton CAIR: Grain Crushings CAIR: Fats & Oils
October 9	Crop Production Cotton Ginnings
October 23	Cattle on Feed Cotton Ginnings
October 28	Data Users Meeting
October 29	Rice Stocks
October 31	Ag Prices



United States Department of Agriculture  
**National Agricultural Statistics Service**

---

---

**All Reports Available At**  
[www.nass.usda.gov](http://www.nass.usda.gov)

**For Questions**  
202-720-2127  
800-727-9540  
[nass@nass.usda.gov](mailto:nass@nass.usda.gov)