



United States Department of Agriculture
National Agricultural Statistics Service

Crop Production - Annual
Grain Stocks
Rice Stocks
Cotton Ginnings
Winter Wheat Seedings
January Crop Production
Executive Summary

Lance Honig, Chief
Crops Branch



Contents

Field Crops	Stocks	Fruit & Nuts	Specialty Crops
Corn	Corn	Citrus	Potatoes
Soybeans	Soybeans		Sweet Potatoes
All Cotton	Sorghum		Peppermint Oil
Sorghum	Rice		Spearmint Oil
Rice	Hay		Taro (Hawaii)
Hay & Forage	All Wheat		Hops
Peanuts	Barley		
Proso Millet	Oats		
Minor Oil			
Sugarcane			
Sugarbeets			
Tobacco			
Pulse Crops			
Winter Wheat			



Survey Overview

	December Ag Survey	Off-Farm Grain Stocks
Survey Type	Farmer Reported	Off-Farm Grain Stock Facilities
Collection Method	Mail, Phone, Internet, Personal Interview	Mail, Phone, Internet, Personal Interview
Crops Included	Field Crops	Corn, Soybeans, All Wheat, Durum Wheat, Barley, Oats, Sorghum, Pulse Crops
States	All except HI	All except AK, HI, and NV
Sample Size	82,810	8,638
Collection Period	Nov 28 – Dec 21	Nov 28 – Dec 21



Principal Crops Planted Acreage

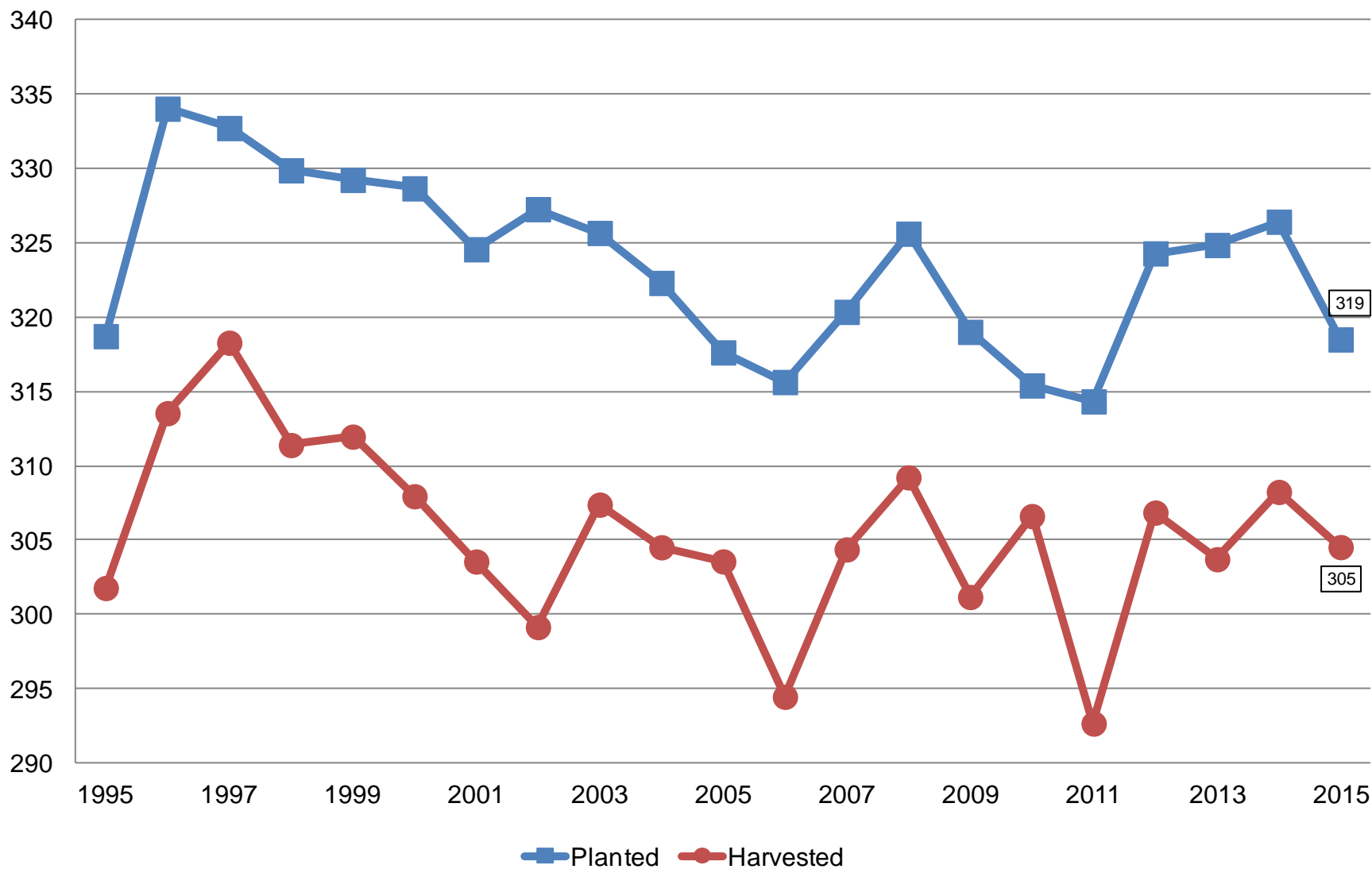
United States

Year	Principal Crops	Change From Previous Year
	<i>Million Acres</i>	
2006	315.6	-2.0
2007	320.4	+4.7
2008	325.6	+5.3
2009	319.0	-6.6
2010	315.4	-3.6
2011	314.3	-1.1
2012	324.3	+10.0
2013	324.9	+0.6
2014	326.4	+1.5
2015	318.5	-7.9



Principal Crops United States

Million Acres





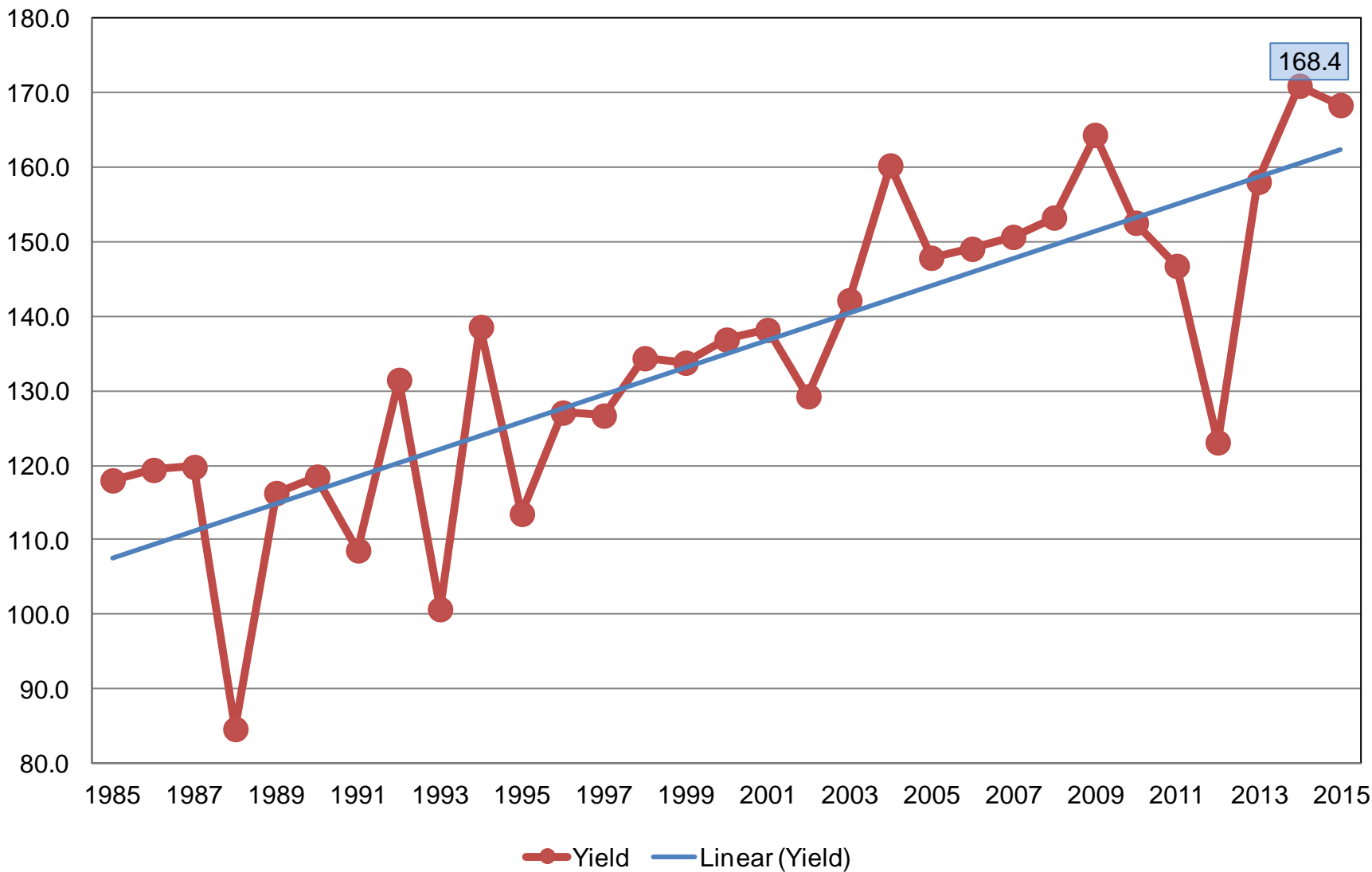
2015 Crop Production – Annual

Crop	Unit	January 2016	% Change From Previous Forecast	% Change From Previous Season
Corn				
Planted	Mil Ac	88.0	-0.4	-2.9
Harvested	Mil Ac	80.7	+0.1	-2.9
Yield	Bu/Ac	168.4	-0.5	-1.5
Production	Bil Bu	13.6	-0.4	-4.3
Stocks	Bil Bu	11.2	NA	+<0.1

Corn for Grain Yield

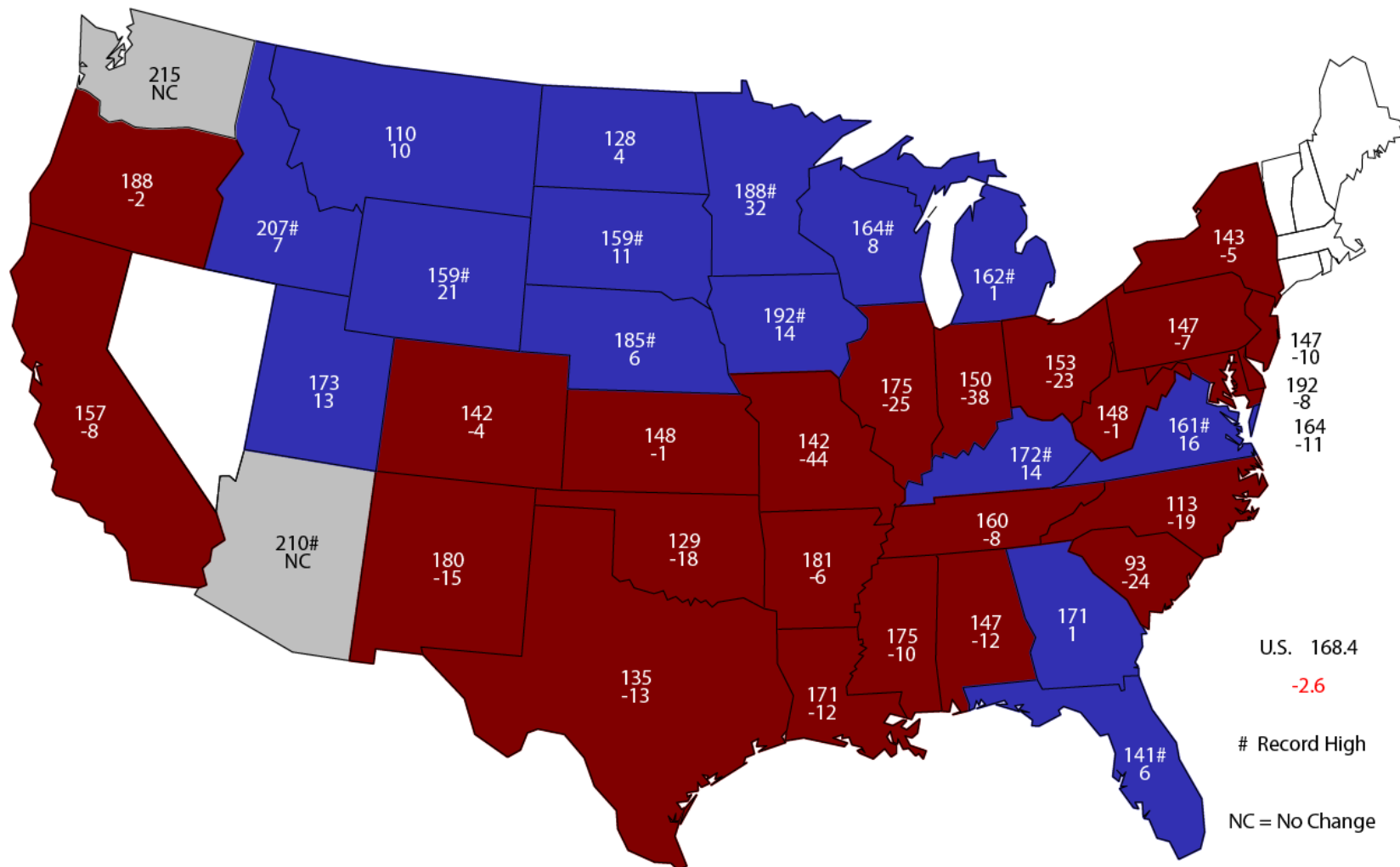
United States

Bushels per Acre



2015 Corn Yield

Bushels and Change From Previous Year



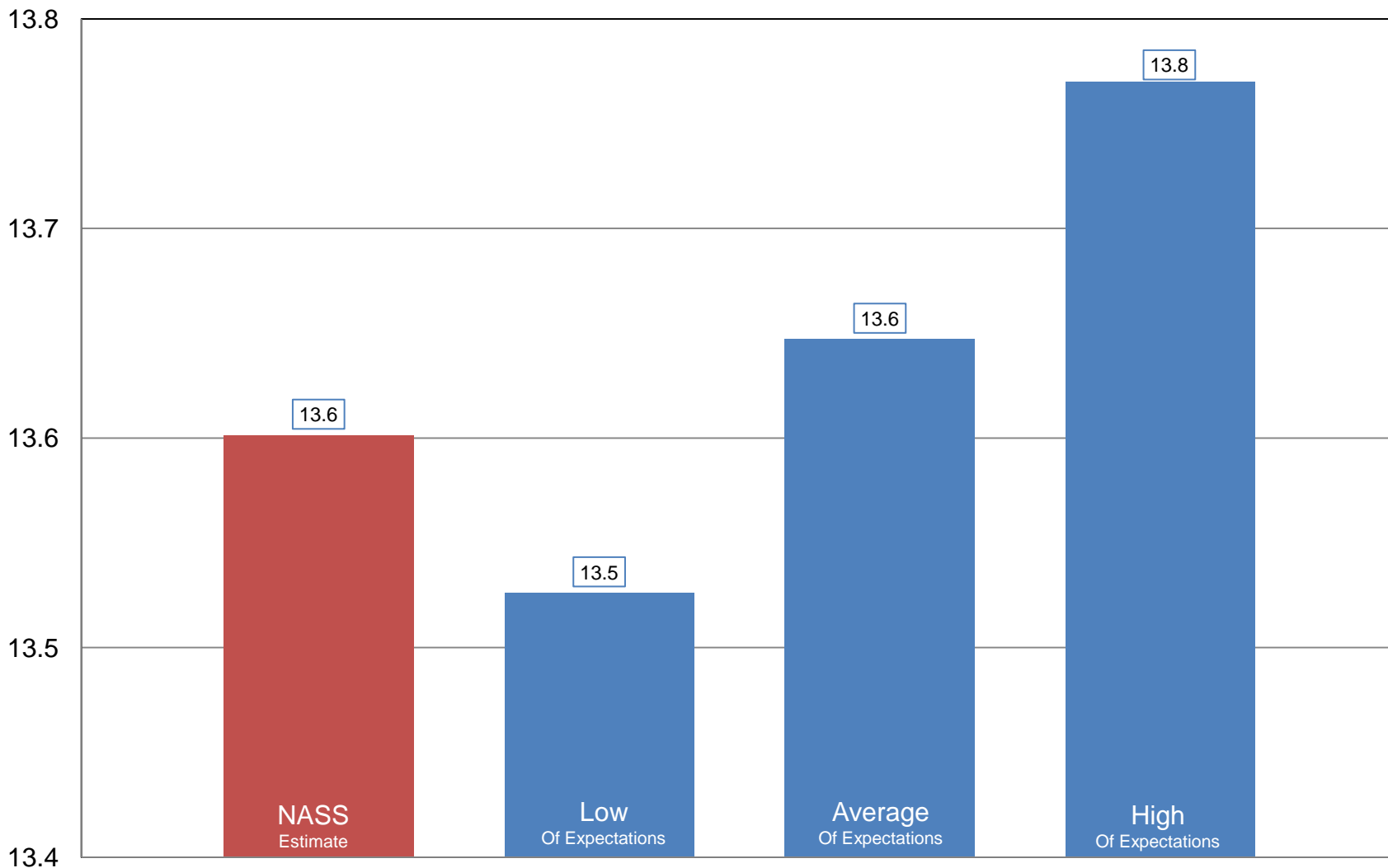
U.S. 168.4
 -2.6
 # Record High
 NC = No Change



NASS Estimate vs. Expectations

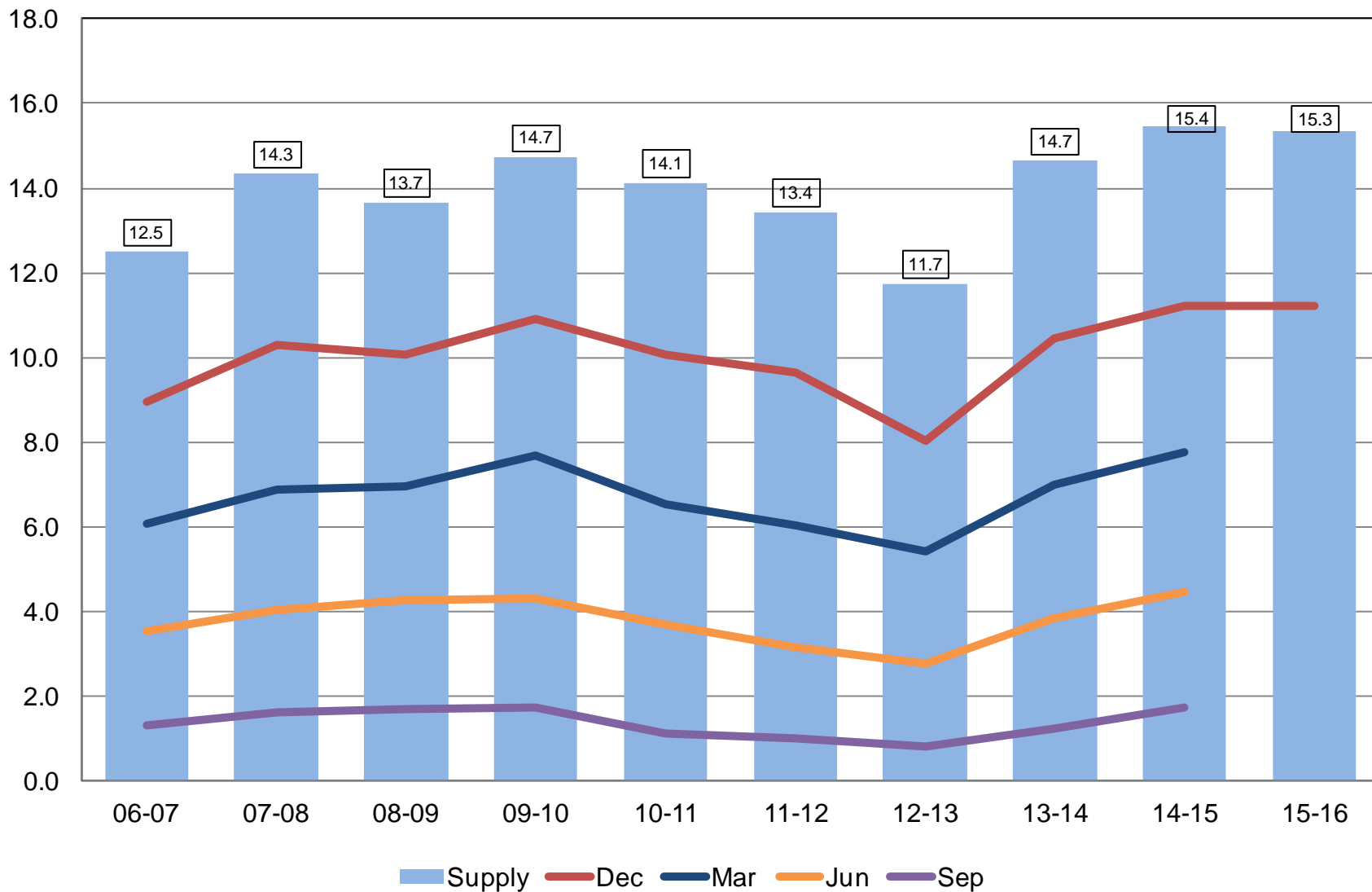
Corn Production

Billion Bushels



Corn Stocks United States

Billion Bushels

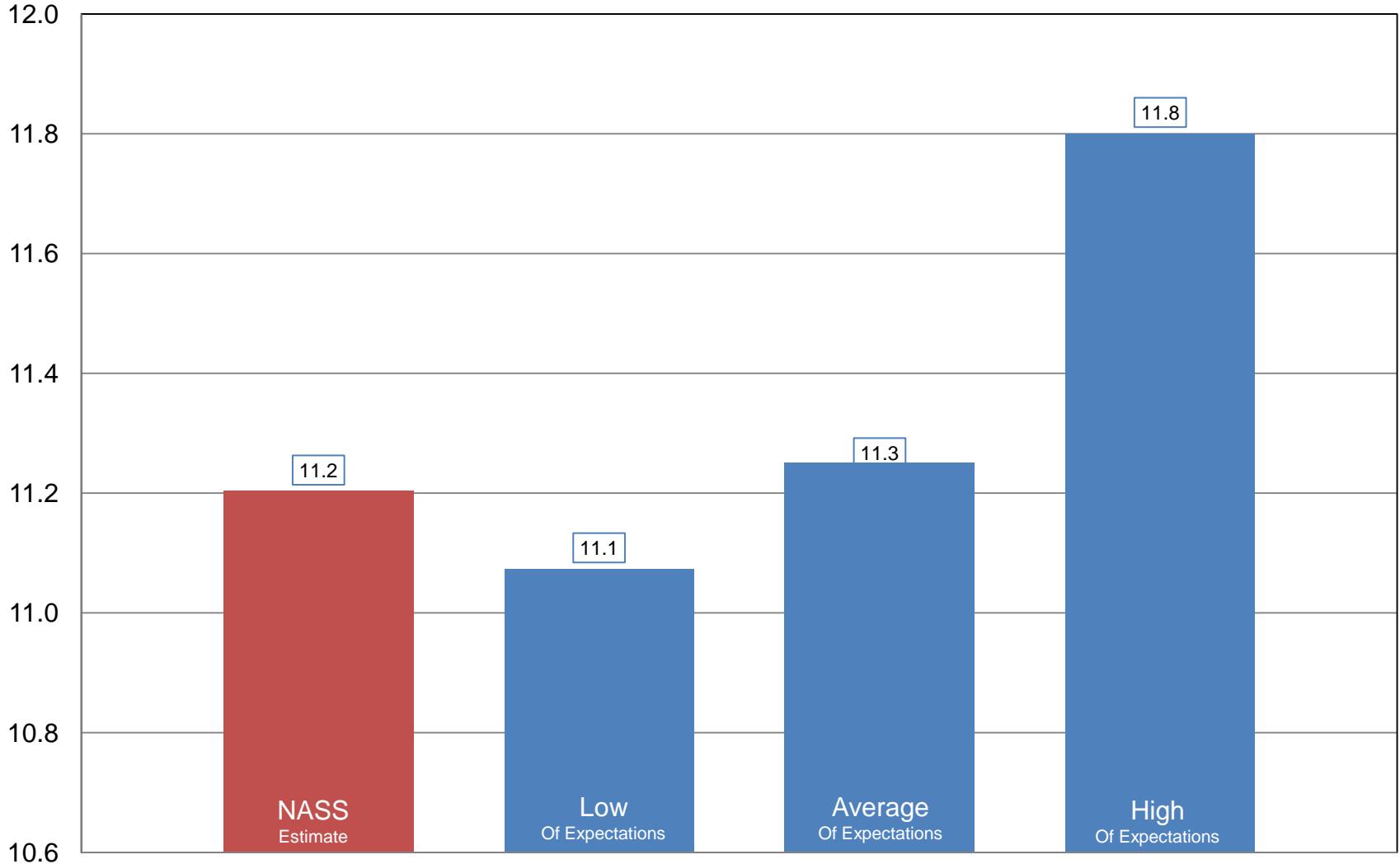




NASS Estimate vs. Expectations

Corn Stocks

Billion Bushels



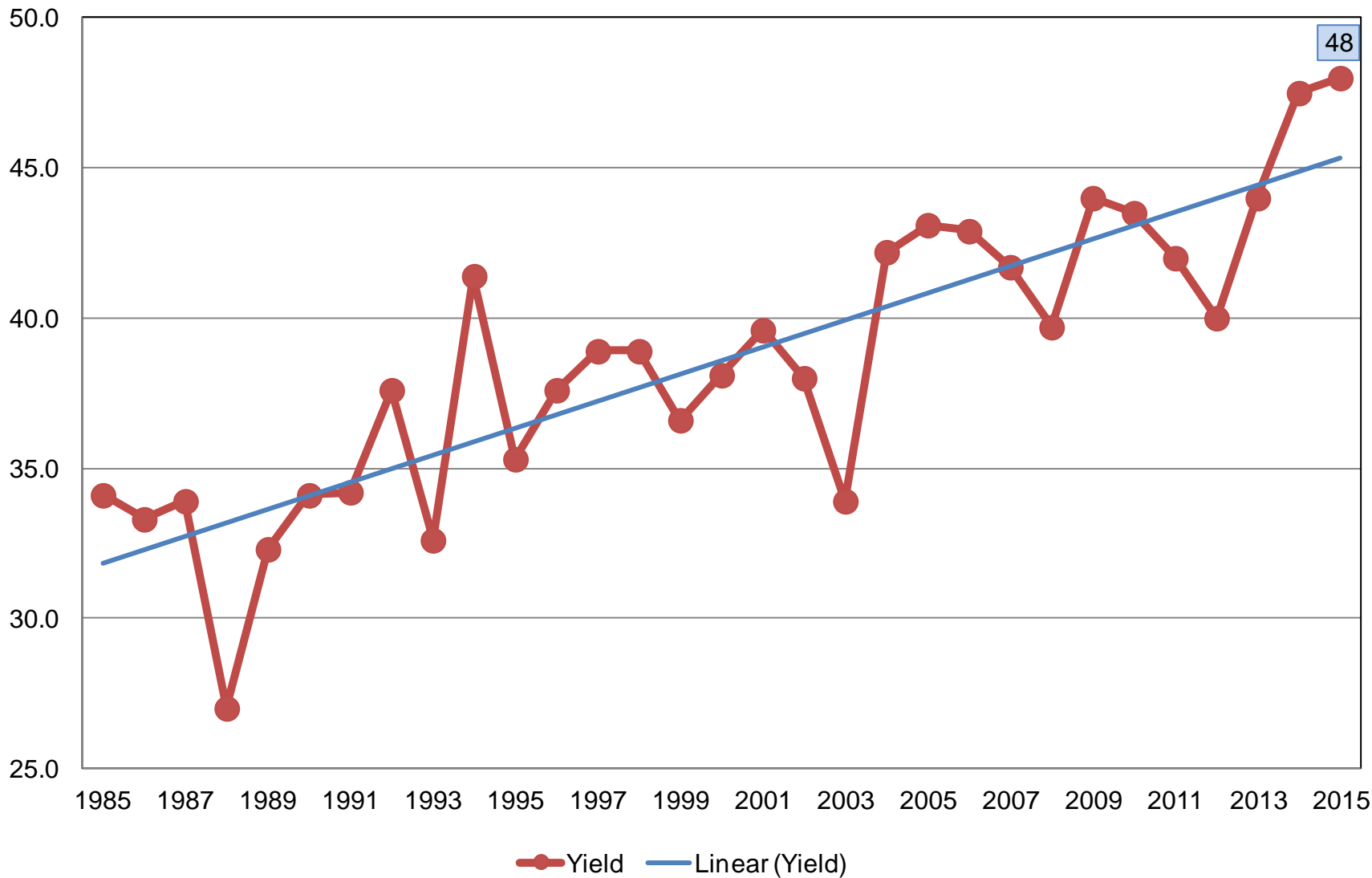


2015 Crop Production – Annual

Crop	Unit	January 2016	% Change From Previous Forecast	% Change From Previous Season
Soybeans				
Planted	Mil Ac	82.7	-0.7	-0.8
Harvested	Mil Ac	81.8	-0.7	-0.9
Yield	Bu/Ac	48.0	-0.6	+1.1
Production	Bil Bu	3.93	-1.3	+0.1
Stocks	Bil Bu	2.71	NA	+7.4

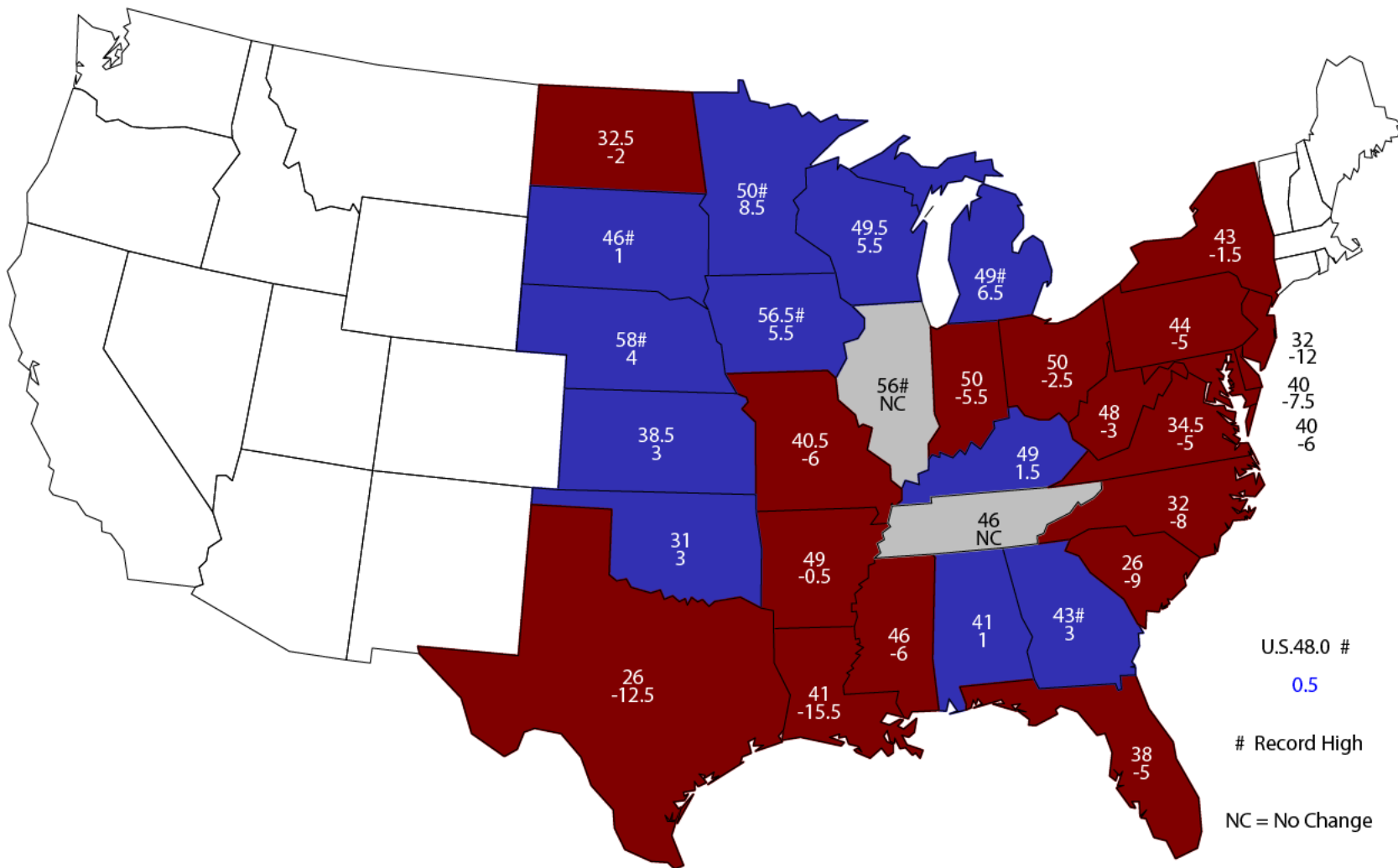
Soybean Yield United States

Bushels per Acre



2015 Soybean Yield

Bushels and Change From Previous Year



U.S. 48.0 #
0.5

Record High

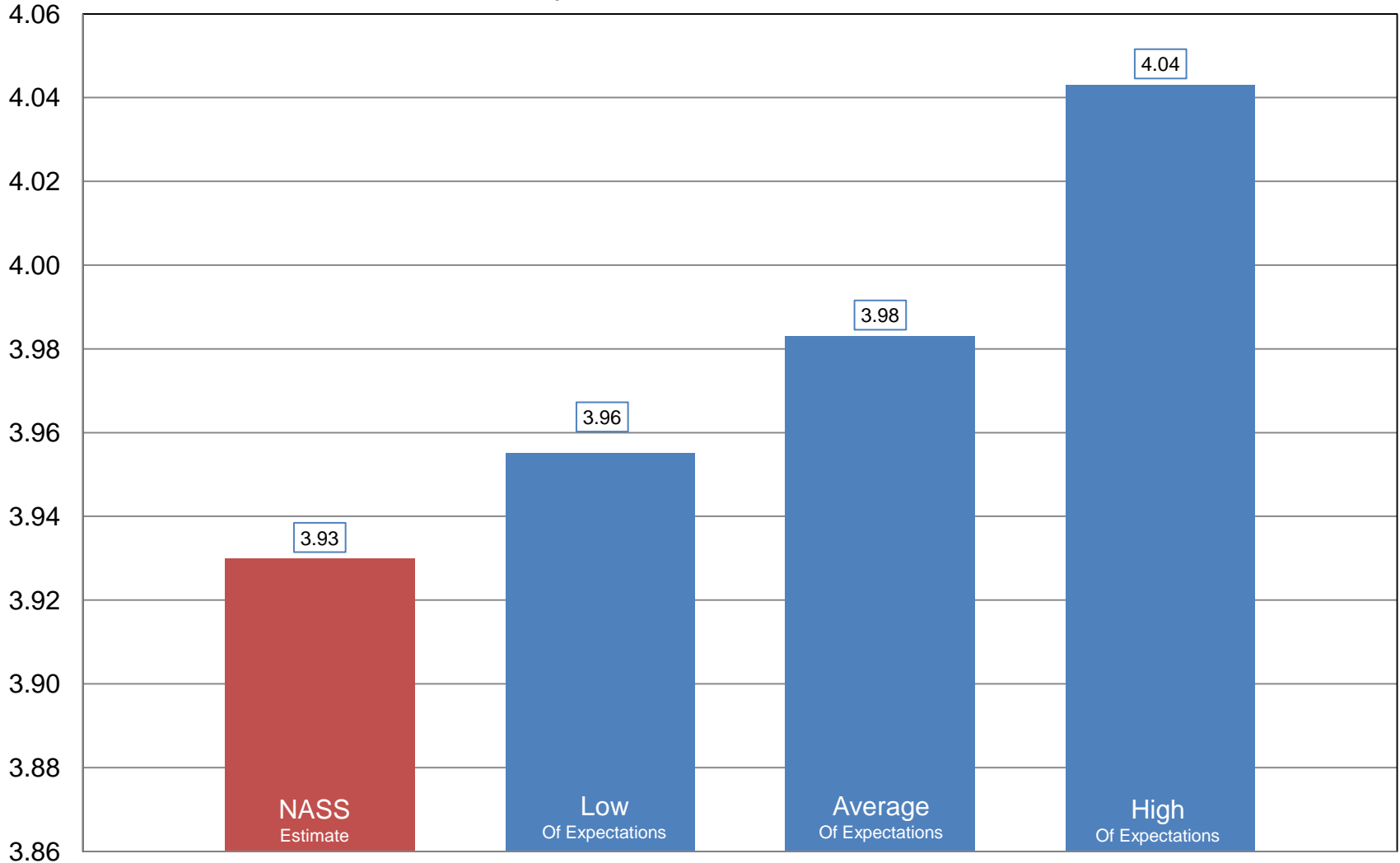
NC = No Change



NASS Estimate vs. Expectations

Soybean Production

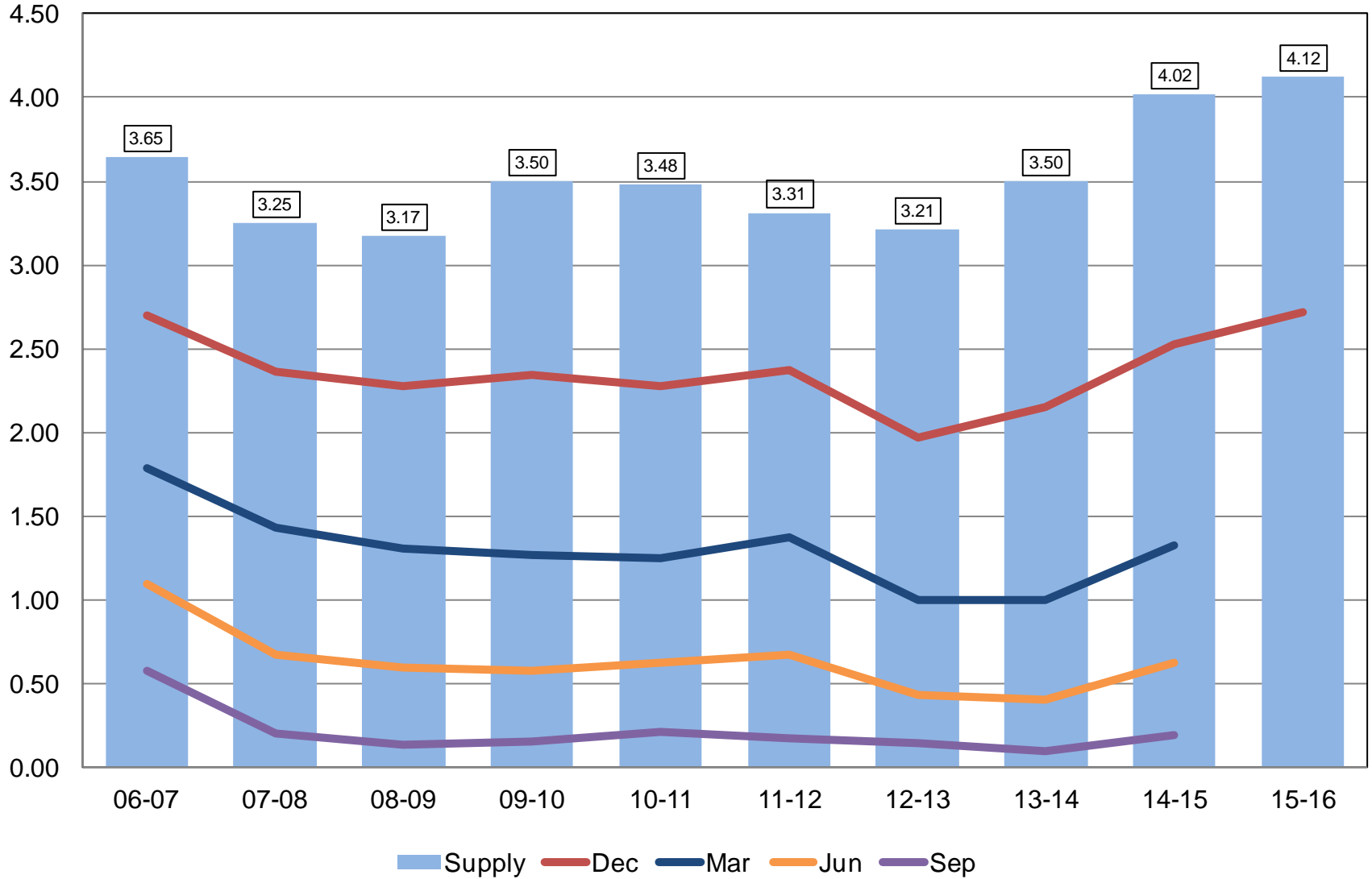
Billion Bushels





Soybean Stocks United States

Billion Bushels

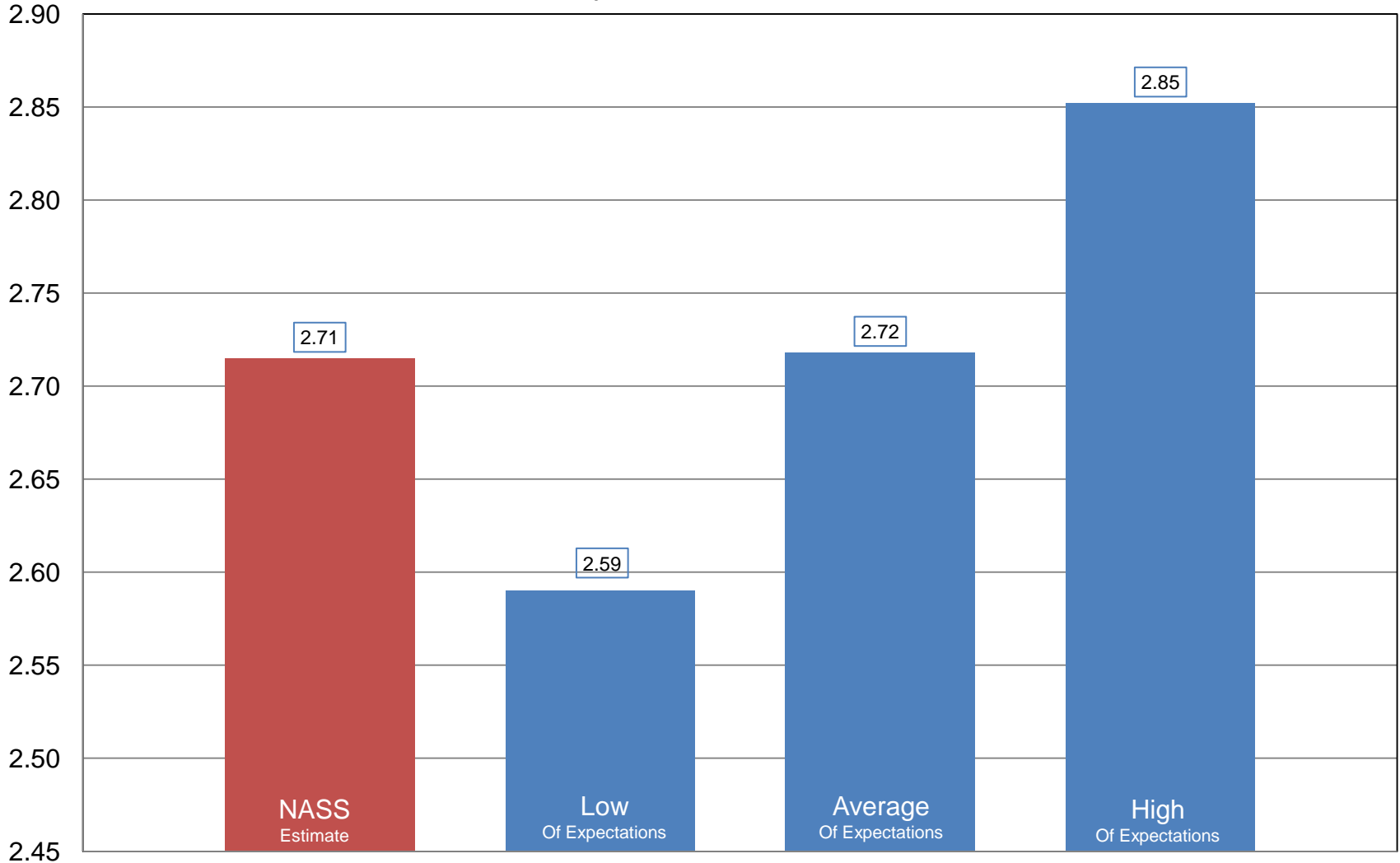




NASS Estimate vs. Expectations

Soybean Stocks

Billion Bushels



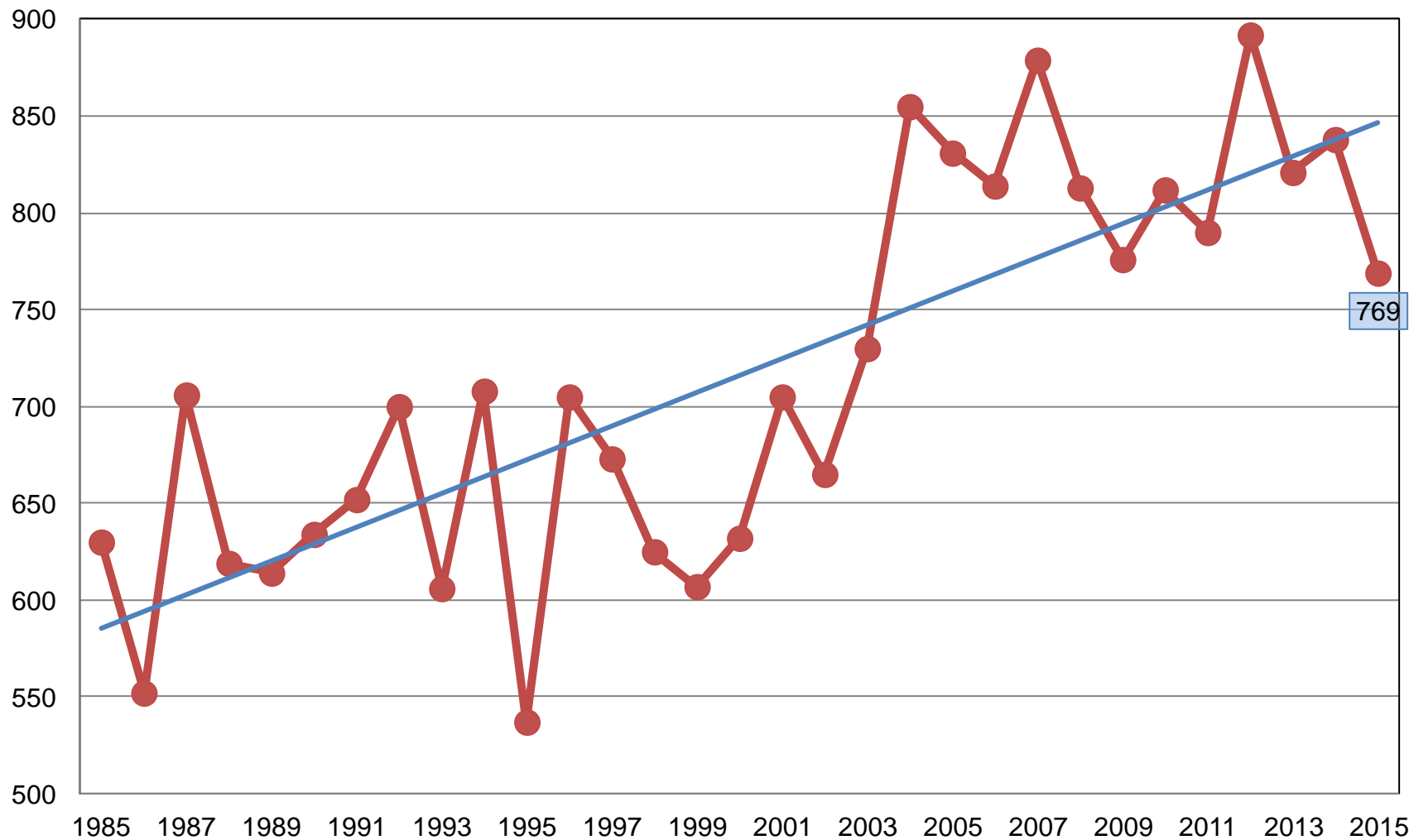


2015 Crop Production – Annual

Crop	Unit	January 2016	% Change From Previous Forecast	% Change From Previous Season
All Cotton				
Planted	Mil Ac	8.58	+0.3	-22.3
Harvested	Mil Ac	8.08	-0.9	-13.6
Yield	Lb/Ac	769	+0.1	-8.2
Production	Mil Bls	12.9	-0.7	-20.7

All Cotton Yield United States

Pounds per Acre



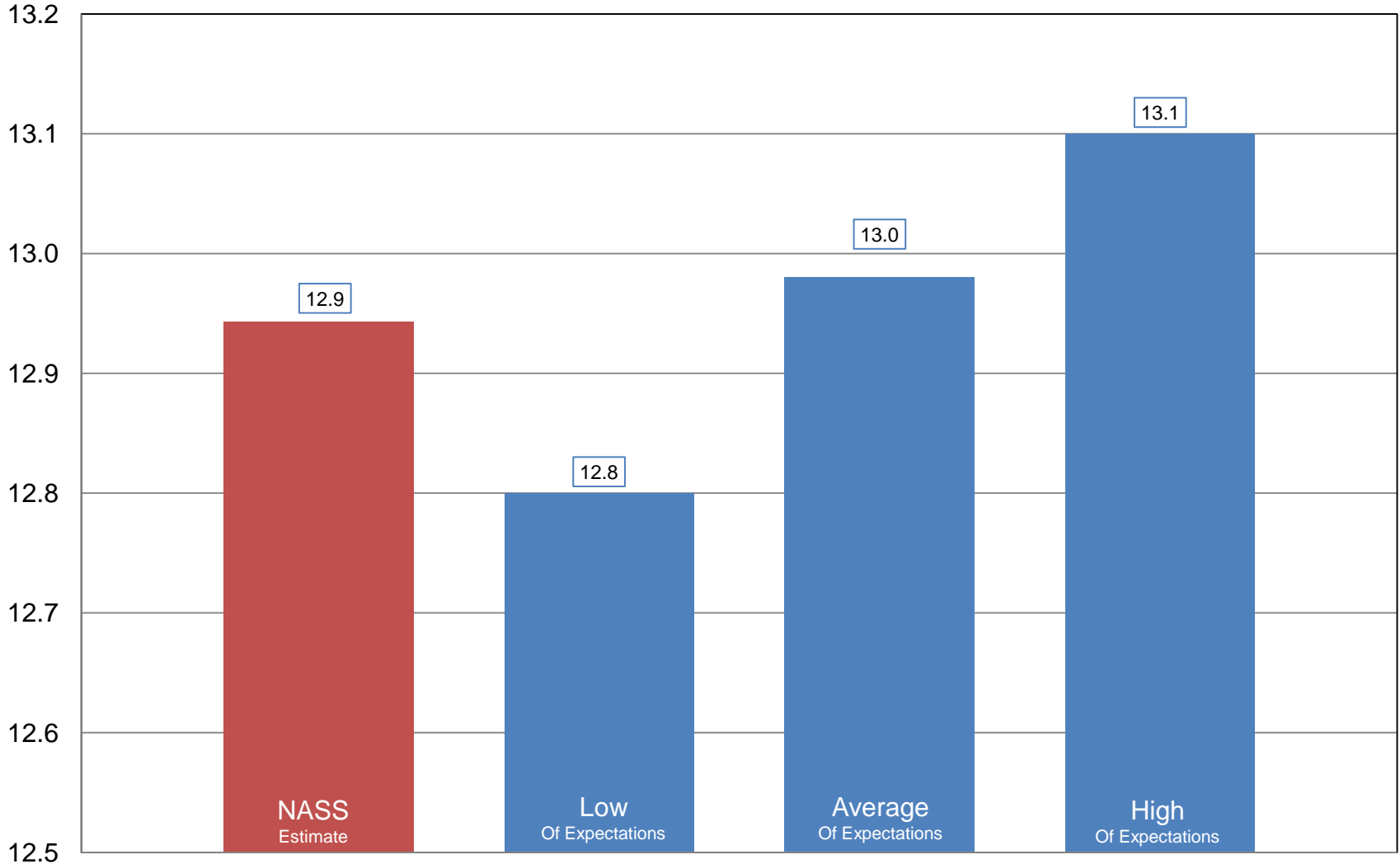
—●— Yield — Linear (Yield)



NASS Estimate vs. Expectations

Cotton Production

Million Bales





2015 Crop Production – Annual

Crop	Unit	January 2016	% Change From Previous Forecast	% Change From Previous Season
Sorghum				
Planted	Mil Ac	8.46	-2.2	+18.5
Harvested	Mil Ac	7.85	+2.7	+22.7
Yield	Bu/Ac	76.0	-2.2	+12.4
Production	Mil Bu	597	+0.5	+38.0
Stocks	Mil Bu	314	NA	+41.1



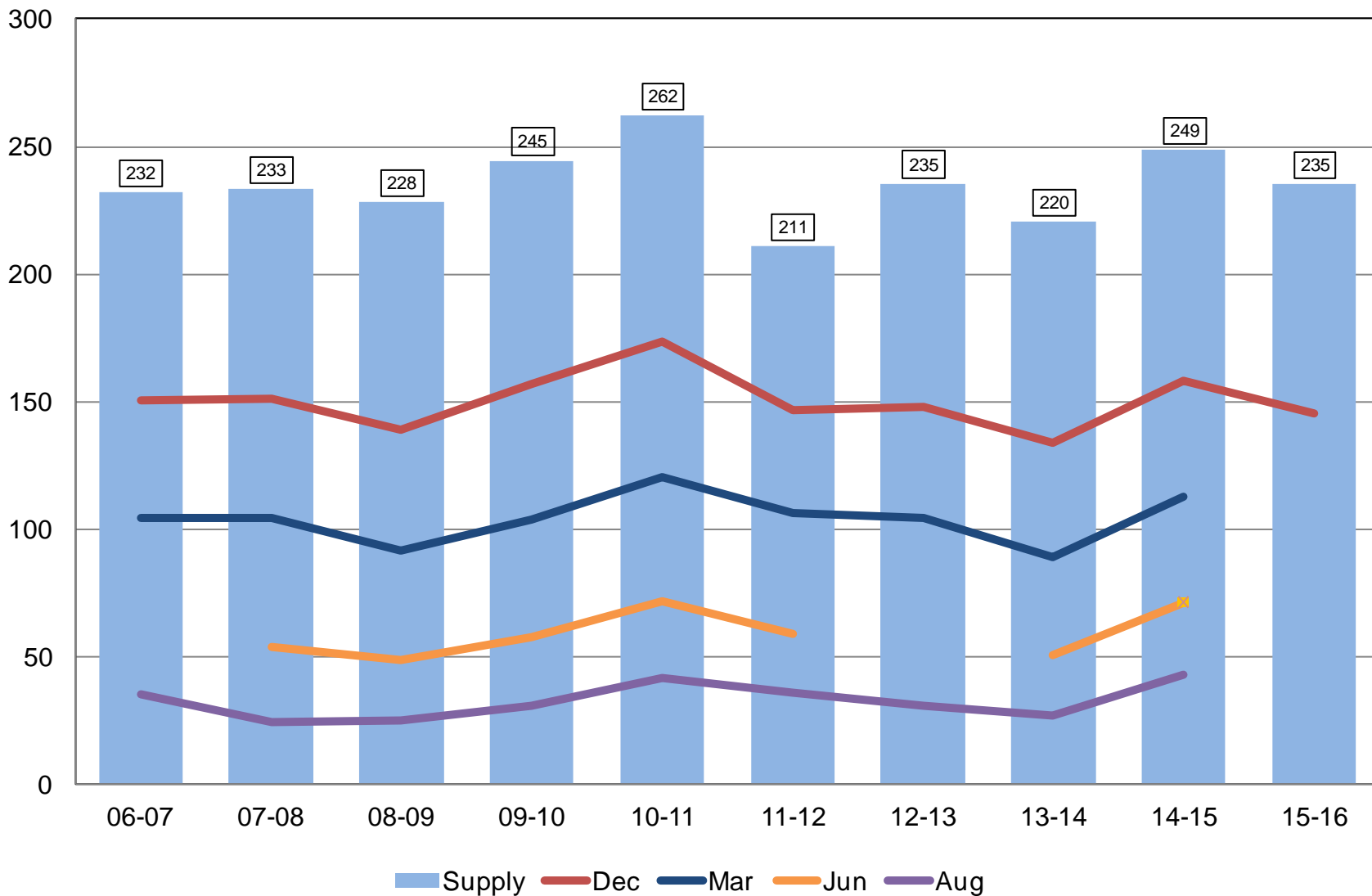
2015 Crop Production – Annual

Crop	Unit	January 2016	% Change From Previous Forecast	% Change From Previous Season
Rice				
Planted	Mil Ac	2.61	+0.1	-11.5
Harvested	Mil Ac	2.58	+0.2	-12.2
Yield	Lbs/Ac	7,470	+0.6	-1.4
Production	Mil Cwt	192	+0.8	-13.4
Stocks	Mil Cwt	145	NA	-8.2



Rough Rice Stocks United States

Million Hundredweight



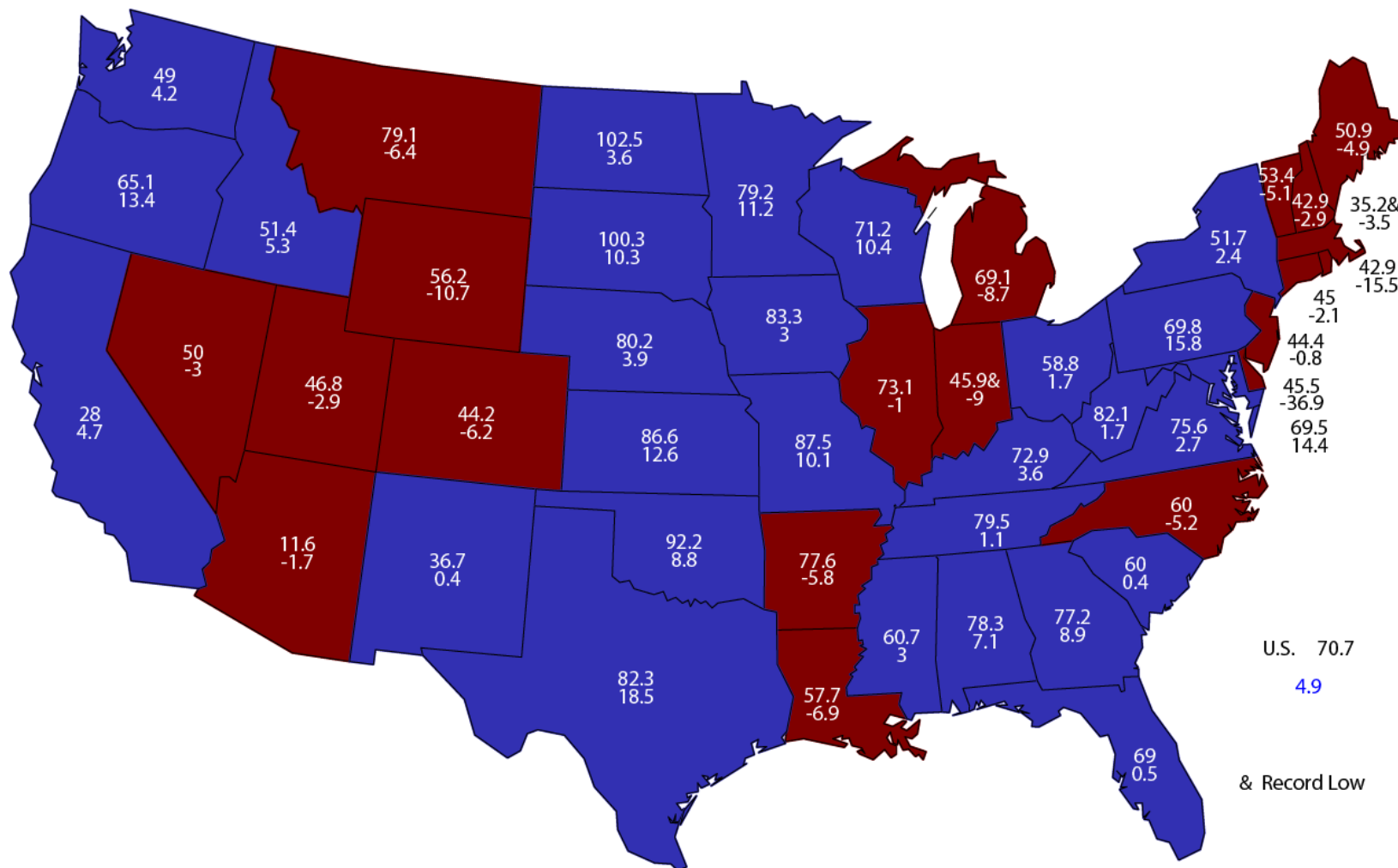


2015 Crop Production – Annual

Crop	Unit	January 2016	% Change From Previous Forecast	% Change From Previous Season
All Hay				
Harvested	Mil Ac	54.4	-3.7	-4.6
Yield	Tons/Ac	2.47	-2.0	+0.8
Production	Mil Tons	134	-5.6	-4.0
Stocks	Mil Tons	95.0	NA	+3.2

December 1, 2015 Hay Stocks/Production

Percent and Change From Previous Year



U.S. 70.7
4.9
& Record Low



2015 Crop Production – Annual

Crop	Unit	January 2016	% Change From Previous Forecast	% Change From Previous Season
Production				
All Other Hay	Mil Tons	75.4	-4.8	-3.9
Alfalfa Hay	Mil Tons	59.0	-6.7	-4.0
Proso Millet	Mil Bu	14.2	NA	+5.0
Peanuts	Bil Lbs	6.21	+0.7	+19.8



2015 Crop Production – Annual

Crop	Unit	January 2016	% Change From Previous Forecast	% Change From Previous Season
Production				
Canola	Bil Lbs	2.88	-7.0	+14.4
Cottonseed	Mil Tons	4.15	-0.7	-19.0
Flaxseed	Mil Bu	10.1	NA	+58.5
Mustard Seed	Mil Lbs	26.9	NA	-7.2
Rapeseed	Mil Lbs	1.52	NA	-41.3
Safflower	Mil Lbs	214	NA	+2.7
Sunflowers	Bil Lbs	2.92	+0.6	+31.8



2015 Crop Production – Annual

Crop	Unit	January 2016	% Change From Previous Forecast	% Change From Previous Season
Production				
Sugarcane	Mil Tons	32.5	+1.3	+7.0
Sugarbeets	Mil Tons	35.3	+0.2	+12.8
All Tobacco	Mil Lbs	711	+0.7	-18.8



2015 Crop Production – Annual

Crop	Unit	January 2016	% Change From Previous Forecast	% Change From Previous Season
Production				
A. Winter Peas	Thou Cwt	260	-5.1	+12.1
Dry Peas	Mil Cwt	18.3	-6.5	+6.6
Dry Beans	Mil Cwt	30.1	+1.3	+4.2
Lentils	Mil Cwt	5.28	-0.9	+53.1
Wrinkled Seed	Thou Cwt	384	NA	-37.9



2015 Crop Production – Annual

Crop	Unit	January 2016	% Change From Previous Forecast	% Change From Previous Season
Production				
Potatoes	Mil Cwt	440	-1.1	-0.4
Sweet Potatoes	Mil Cwt	31.0	NA	+4.8
Peppermint Oil	Mil Lbs	5.88	NA	+2.9
Spearmint Oil	Mil Lbs	3.07	NA	+10.3
Taro (Hawaii)	Mil Lbs	3.50	NA	+8.1
Hops	Mil Lbs	78.8	NA	+11.1



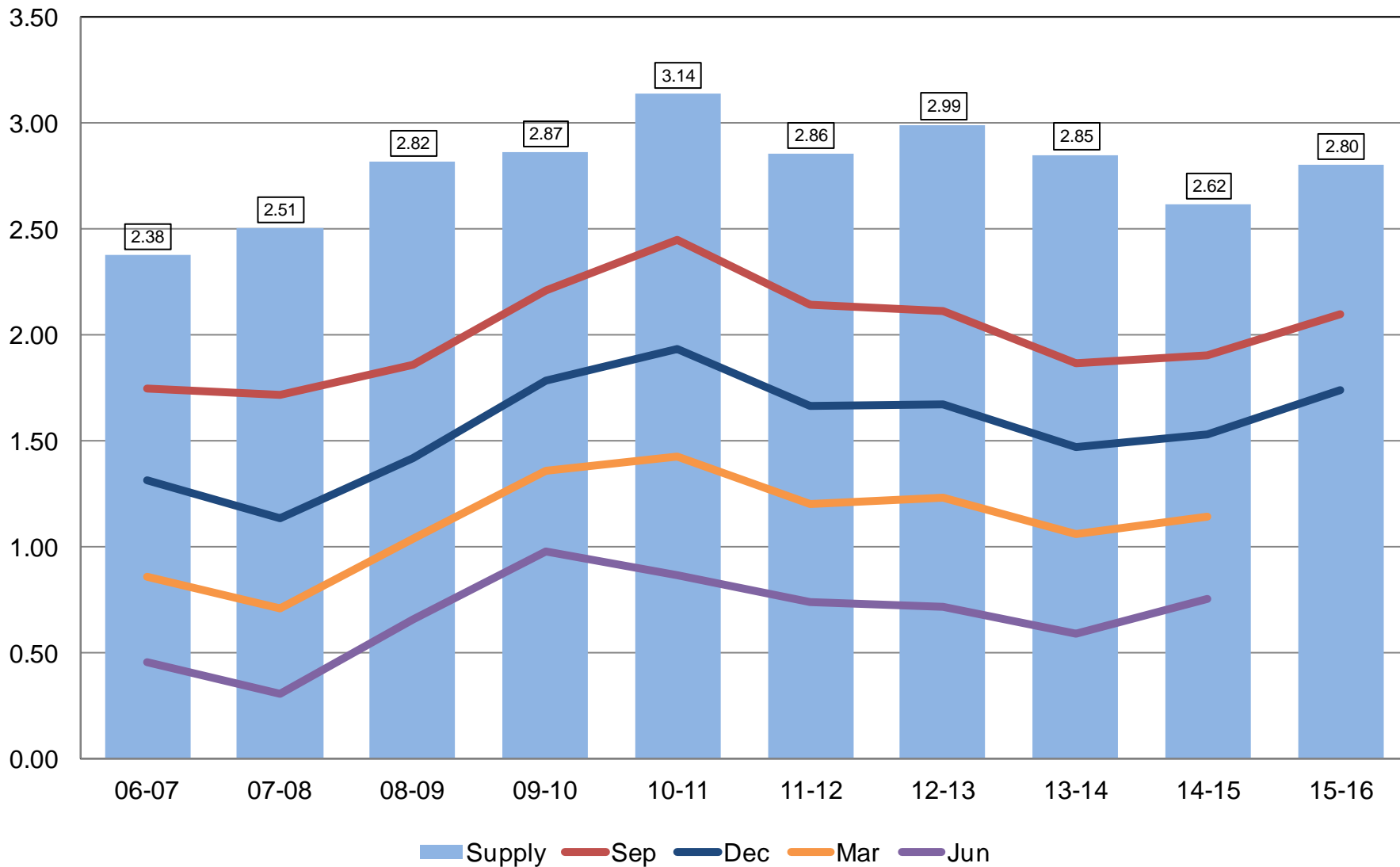
2015 Crop Production – Annual

Crop	Unit	January 2016	% Change From Previous Estimate	% Change From Previous Year
Stocks				
Wheat, All	Bil Bu	1.74	NA	+13.6
Barley	Mil Bu	181	NA	+16.0
Oats	Mil Bu	82.9	NA	+23.8



All Wheat Stocks United States

Billion Bushels

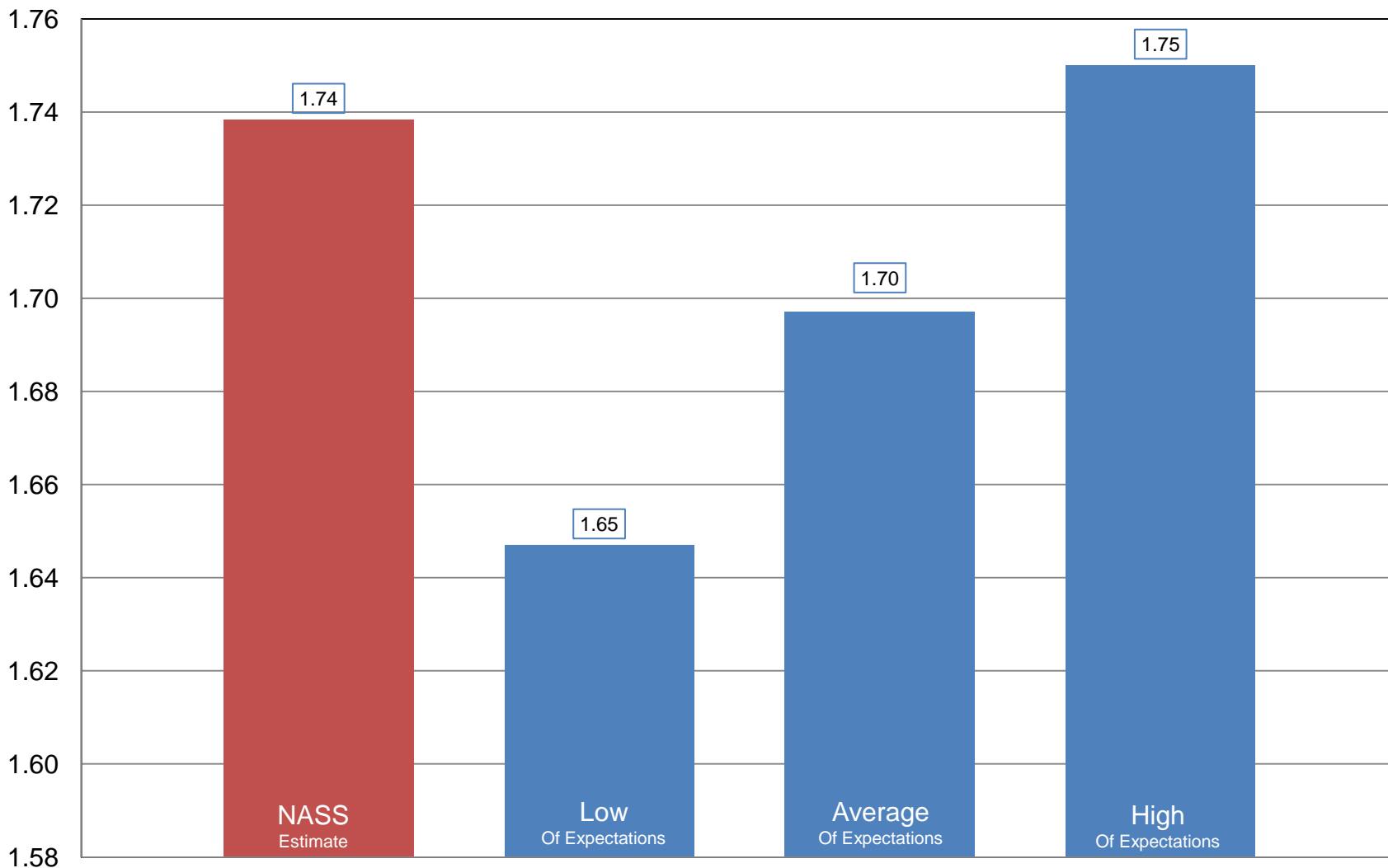




NASS Estimate vs. Expectations

All Wheat Stocks

Billion Bushels





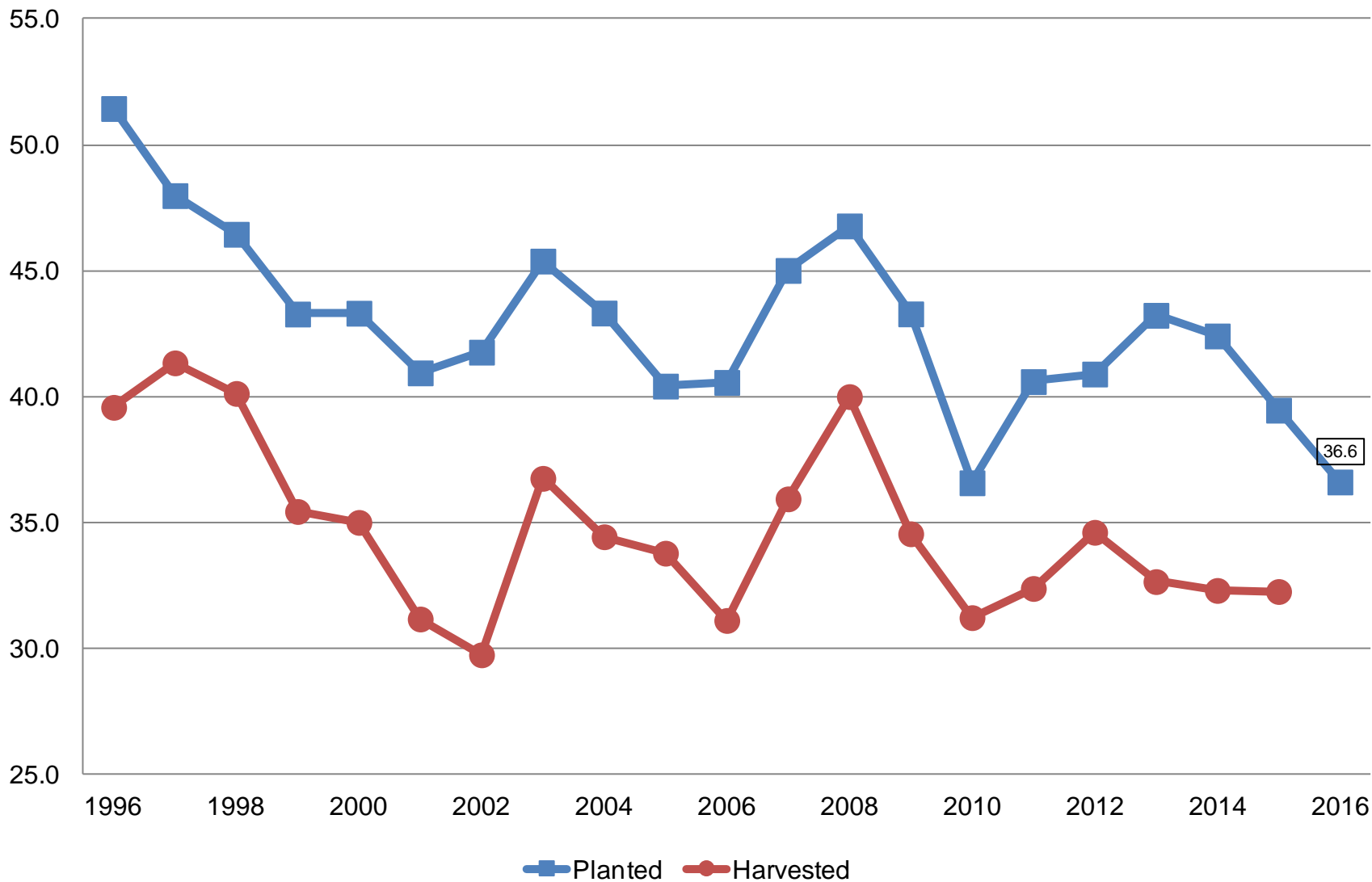
Winter Wheat Seedings

Crop	Unit	January 2016	% Change From Previous Forecast	% Change From Previous Season
Wheat, Winter Planted	Mil Ac	36.6	NA	-7.2

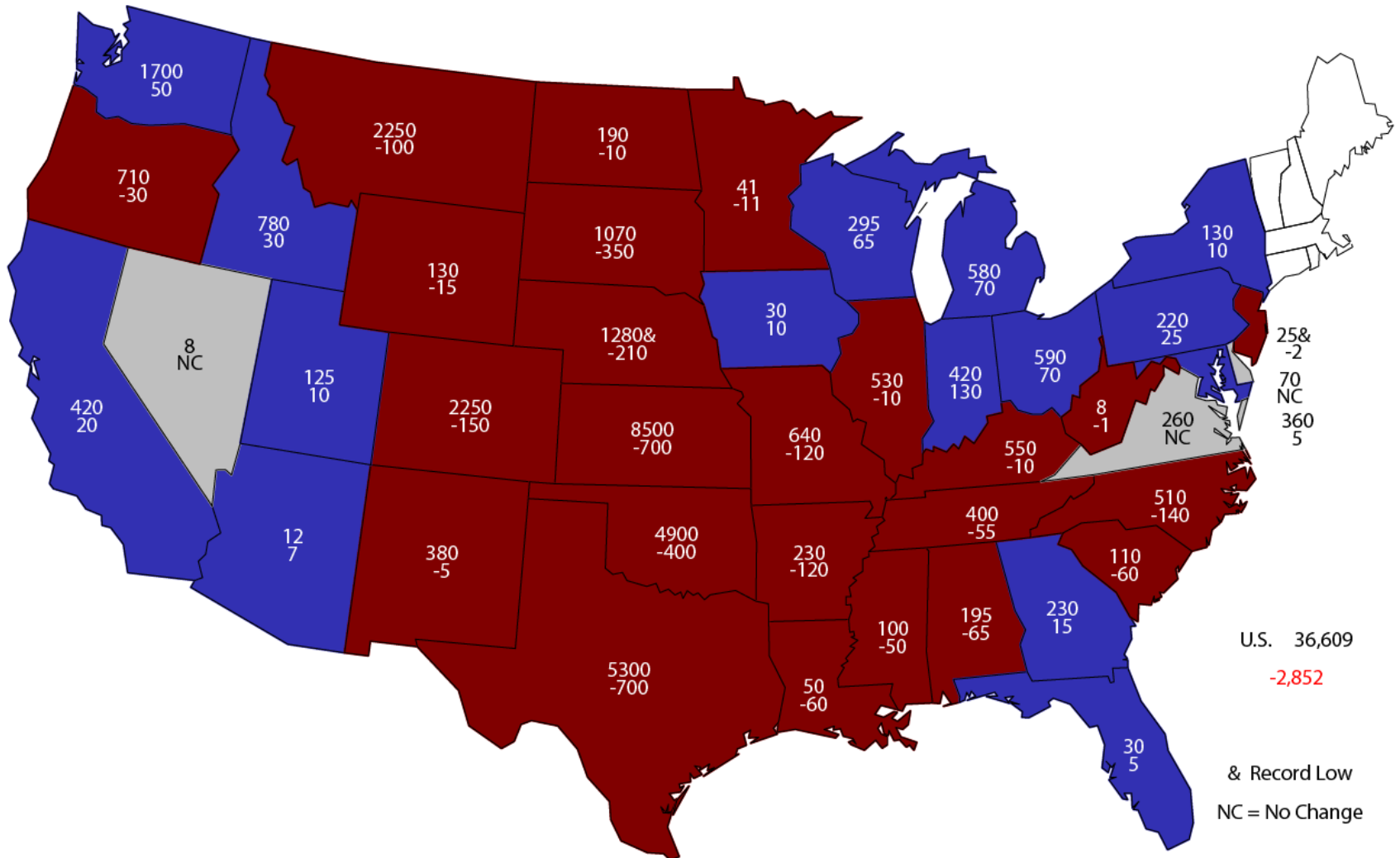


Winter Wheat Acres United States

Million Acres



2016 Winter Wheat Planted Area (000) Acres and Change From Previous Year



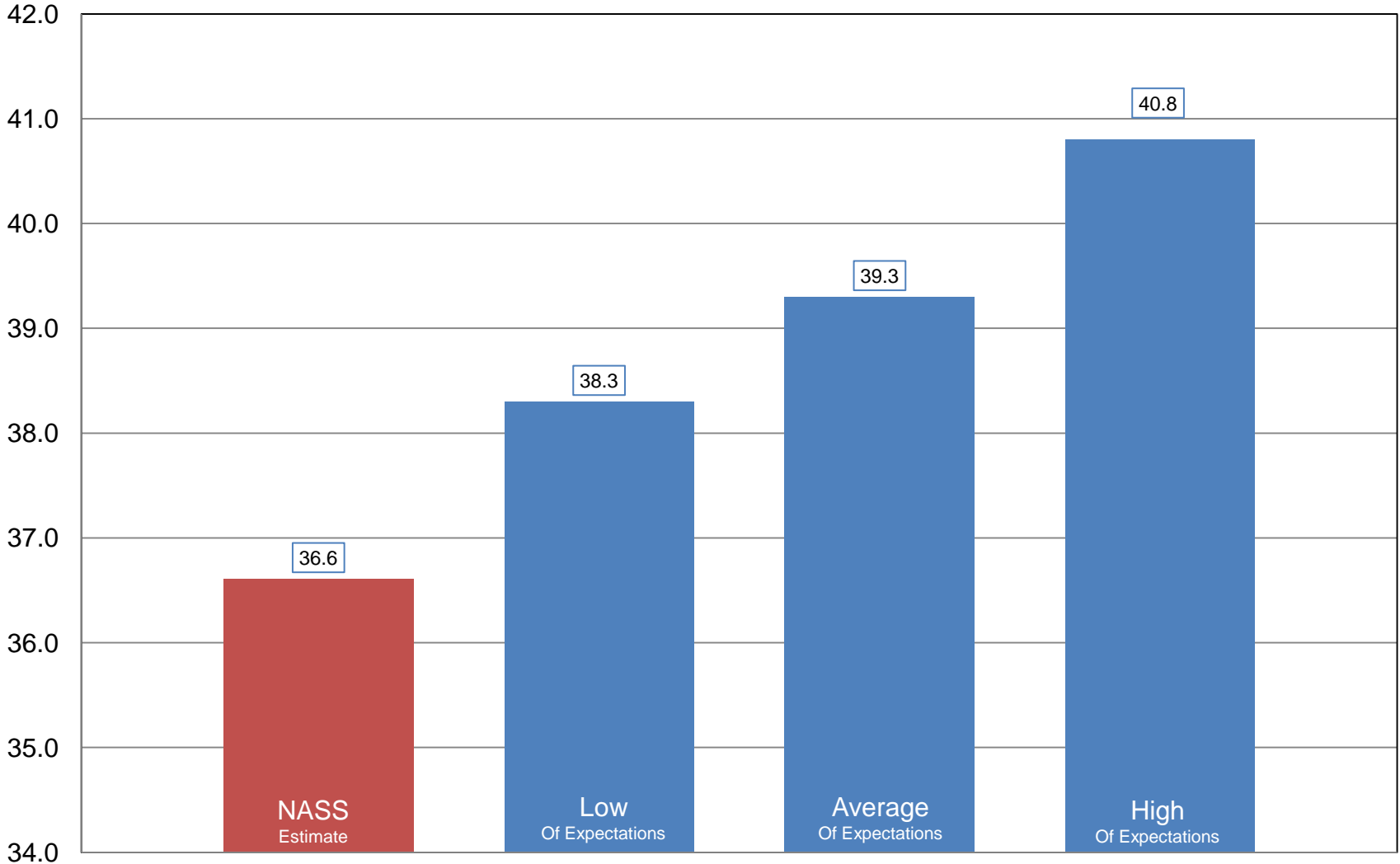
U.S. 36,609
-2,852
 & Record Low
 NC = No Change



NASS Estimate vs. Expectations

Winter Wheat Area Seeded

Million Acres





Survey Overview

Florida Citrus

	Objective Surveys (Size and Drop)	Fruit Maturity	Row Count
Survey Type	Field Observations	Laboratory Tests	Field Observations
Crops Included	Oranges excl. Navels Grapefruit Late tangerines	Oranges excl. Navels	Non-Valencia Oranges and Tangelos
Sample Size	1,663 groves	273 samples	59,992 rows
Collection Period	Dec 11-23	Dec 30-31	Dec 30-31
Test Period	--	Jan 4-5	--



January 2016 Crop Production

Crop	Unit	January 2016	% Change From Previous Forecast	% Change From Previous Season
Production				
Oranges	Mil Tons	5.25	-0.6	-17.8
Grapefruit	Thou Tons	811	+2.8	-6.8
Lemons	Thou Tons	864	+2.4	-4.0
Tangelos	Thou Tons	18.0	NC	-41.9
Tangerines & Mandarins	Thou Tons	907	+7.8	+7.6



Upcoming Reports

Release Date	Report Title
January 22	Cotton Ginnings Cattle on Feed
January 29	Agricultural Prices Cattle Sheep and Goats
February 1	CAIR: Cotton System CAIR: Fats & Oils CAIR: Flour Milling CAIR: Grain Crushing
February 9	Crop Production
February 24	Crop Values



United States Department of Agriculture
National Agricultural Statistics Service

All Reports Available At
www.nass.usda.gov

For Questions
202-720-2127
800-727-9540
nass@nass.usda.gov