

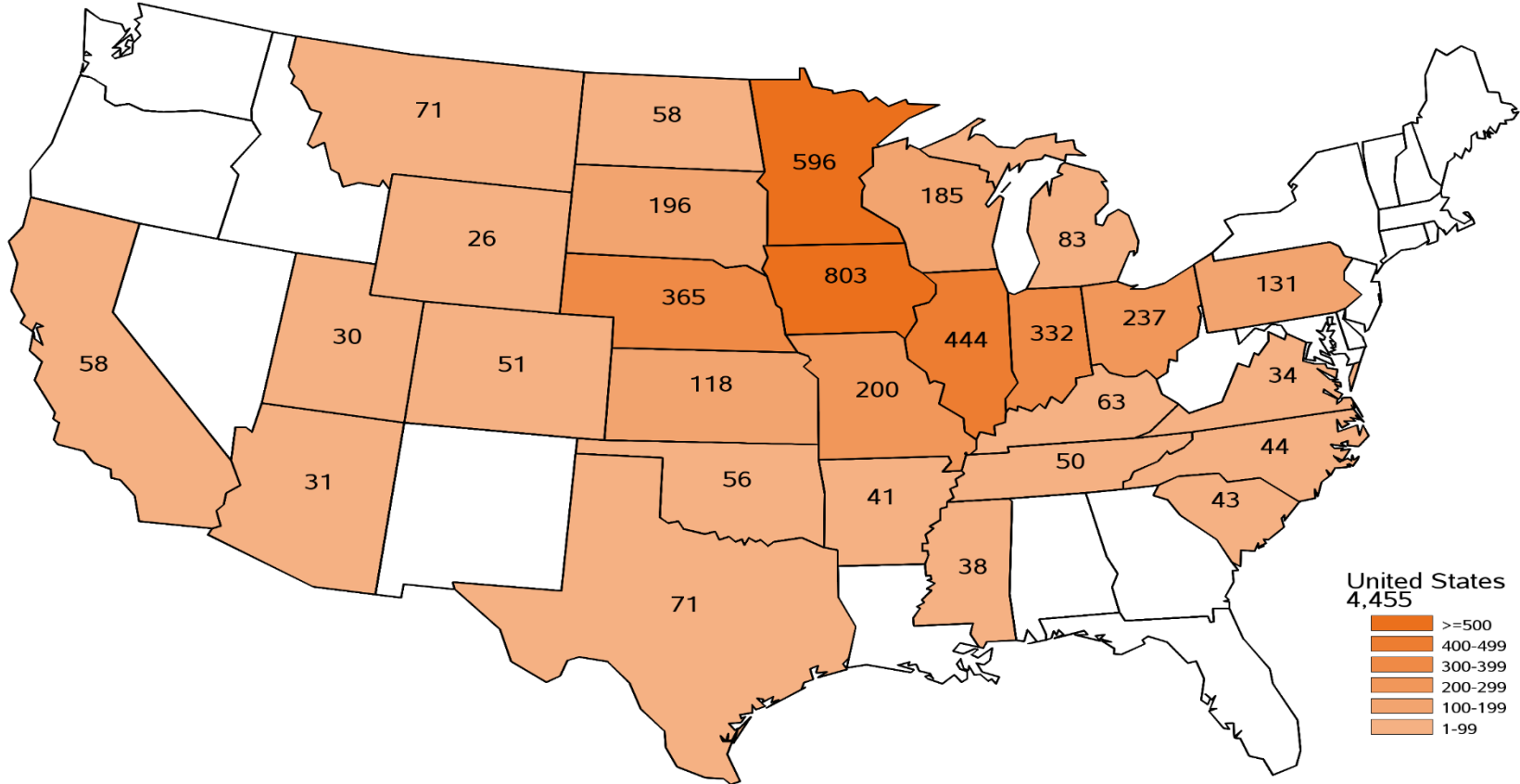


# March Quarterly Hogs and Pigs

## Agricultural Statistics Board Briefing

Travis Averill, Chief  
Livestock Branch

# 2025 March Hogs and Pigs Survey Sample Size





# U.S. Hogs and Pigs Revisions



Survey	Item	Initial Estimate (1,000 head)	Current Revision (1,000 head)	Net Revision (1,000 head)	Current Estimate (1,000 head)
June 1, 2024	All Hogs and Pigs	74,486	90	405	74,891
	Pig Crop	34,021	82	-278	33,743
September 1, 2024	All Hogs and Pigs	76,480	-605	-990	75,490
	Pig Crop	35,030	-456	-49	34,981
December 1, 2024	All Hogs and Pigs	75,845	-940	-940	74,905
	Pig Crop	35,238	-483	-483	34,755



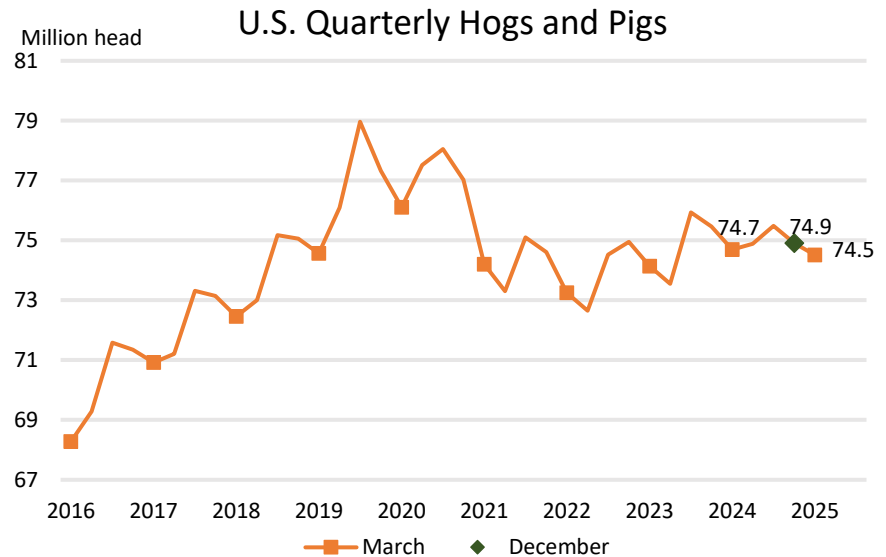
# U.S. Hogs and Pigs March 1



	2024 (1,000 head)	2025	% Change from Previous Year	
All Hogs and Pigs	75,691	74,512	↓	0.2
Breeding Hogs	6,016	5,980	↓	0.6
Market Hogs	68,676	68,532	↓	0.2

**Top 5 States**  
**Inventory**  
(1,000 head)

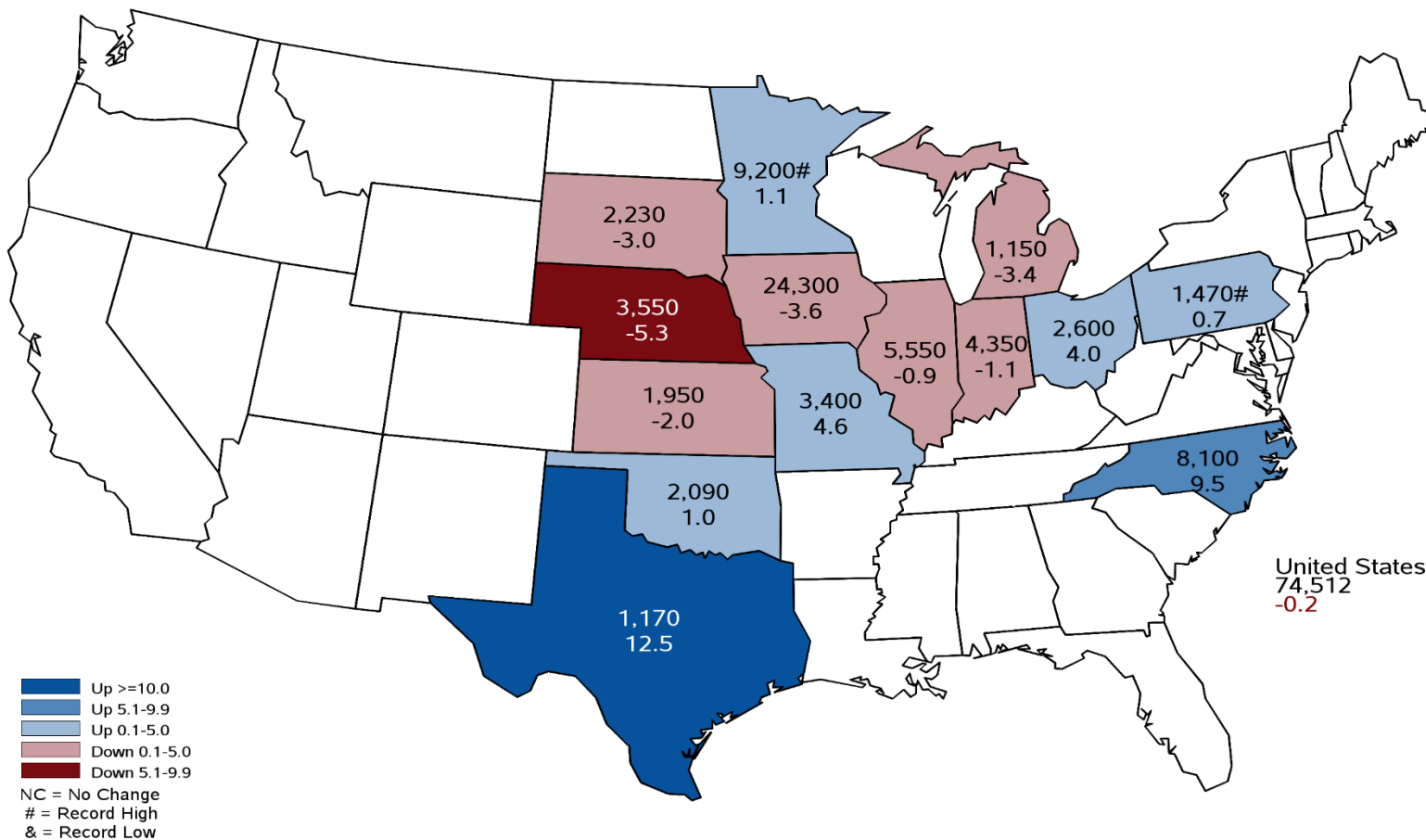
Iowa	24,300
Minnesota	9,200
North Carolina	8,100
Illinois	5,550
Indiana	4,350





# March 1, 2025 Hogs and Pigs Inventory

(1,000) Head and Percent Change from Previous Year

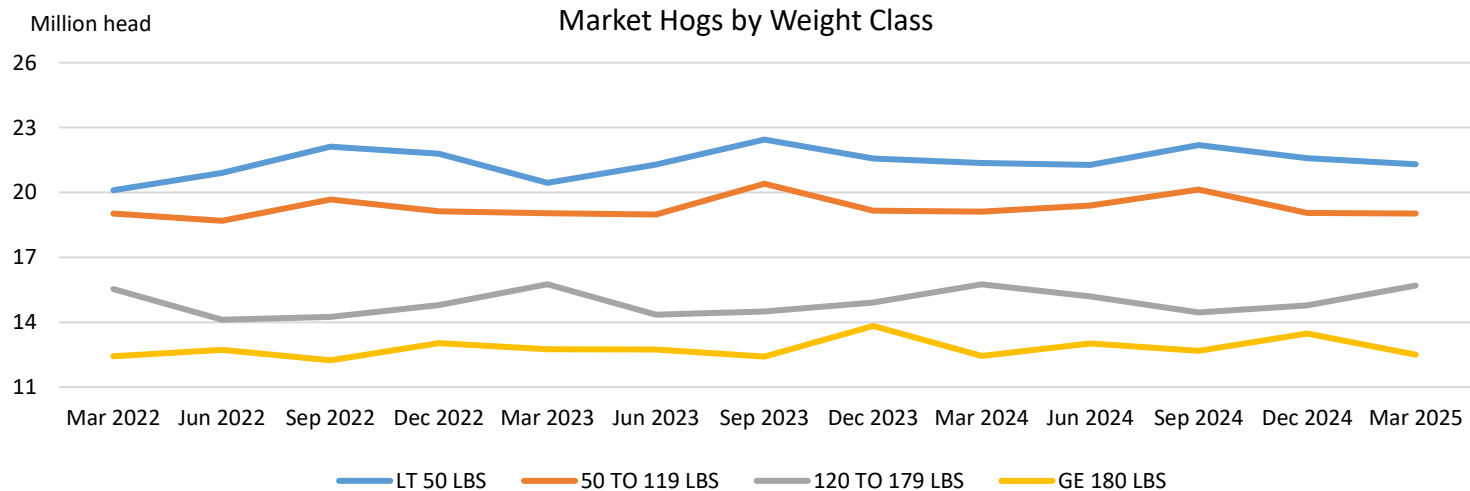




# U.S. Hogs and Pigs March 1



	2024 (1,000 head)	2025	% Change from Previous Year	
Market Hogs	68,676	68,532	↓	0.2
Less than 50 lbs	21,369	21,301	↓	0.3
50 – 119 lbs	19,113	19,032	↓	0.4
120 – 179 lbs	15,754	15,700	↓	0.3
180 lbs or more	12,440	12,499	↑	0.5

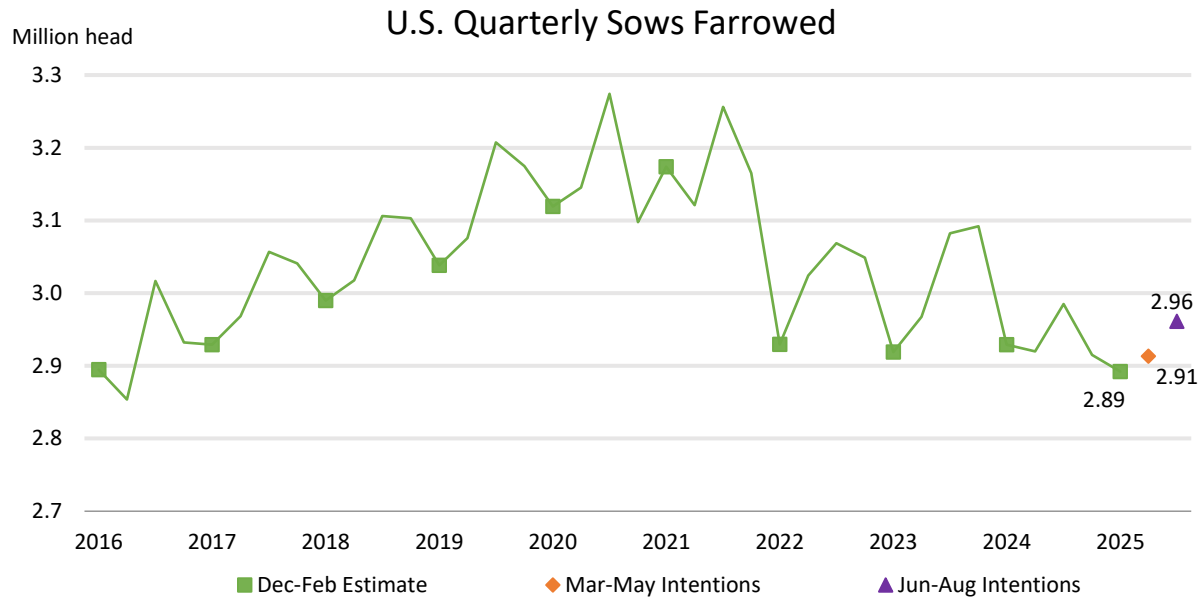




# U.S. Hogs and Pigs March 1



	2024 (1,000 head)	2025	% Change from Previous Year	
Sows Farrowed	2,929	2,892	↓	1.3
Intentions				
Mar – May	2,920	2,913	↓	0.2
Jun – Aug	2,985	2,961	↓	0.8

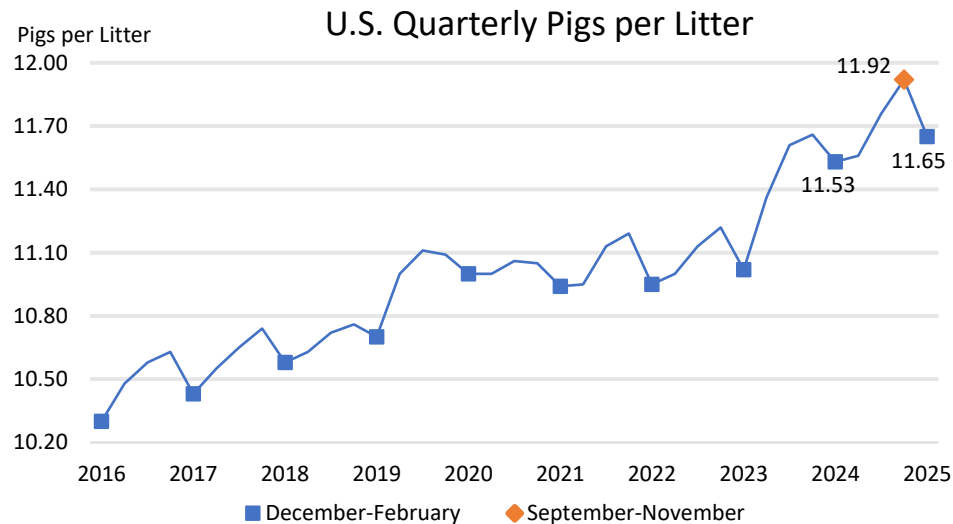




# U.S. Hogs and Pigs March 1



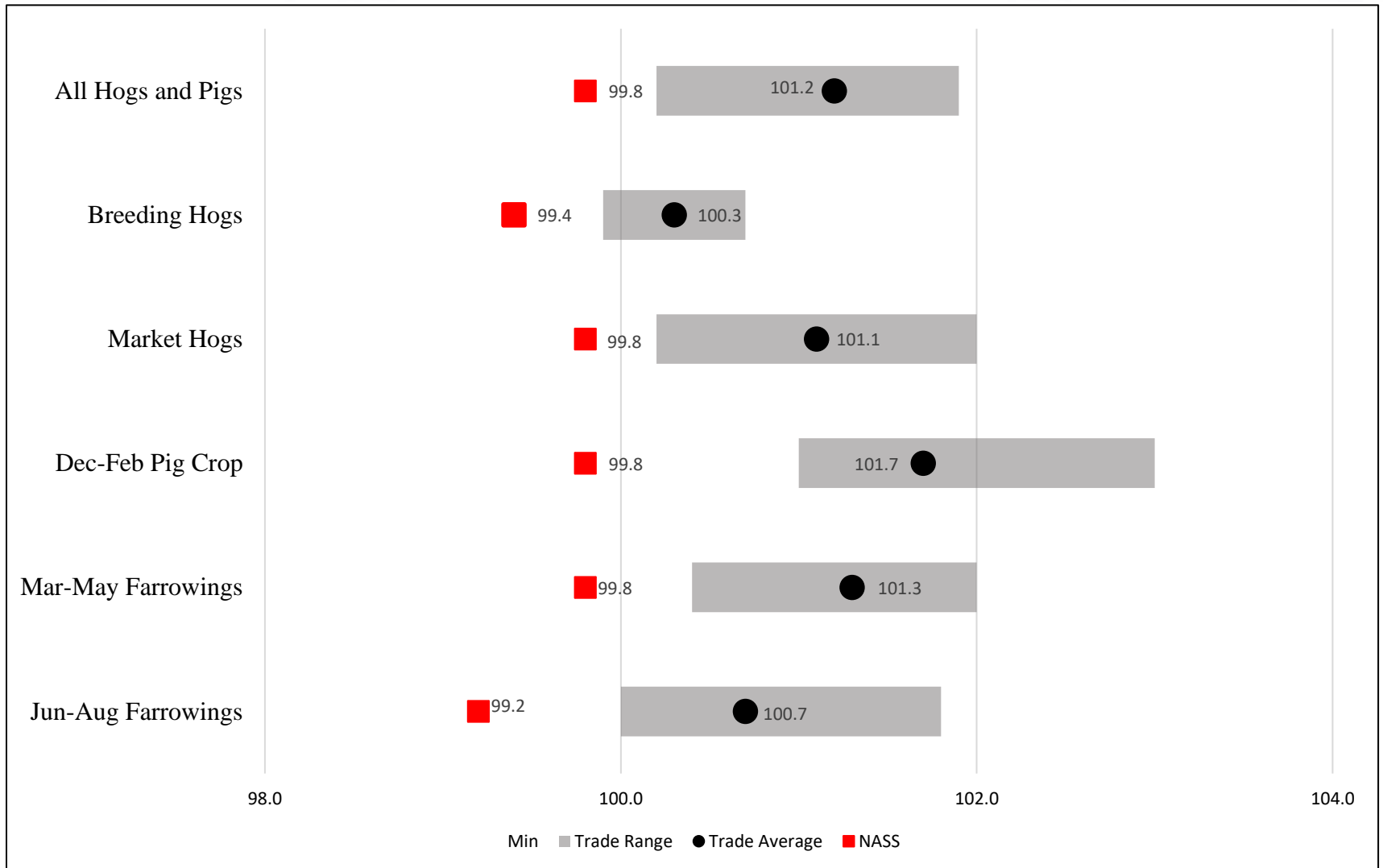
	2024 (1,000 head)	2025	% Change from Previous Year	
Pig Crop	33,756	33,701	↓	0.2
	(Number)			
Pigs per Litter	11.53	11.65	↑	1.0





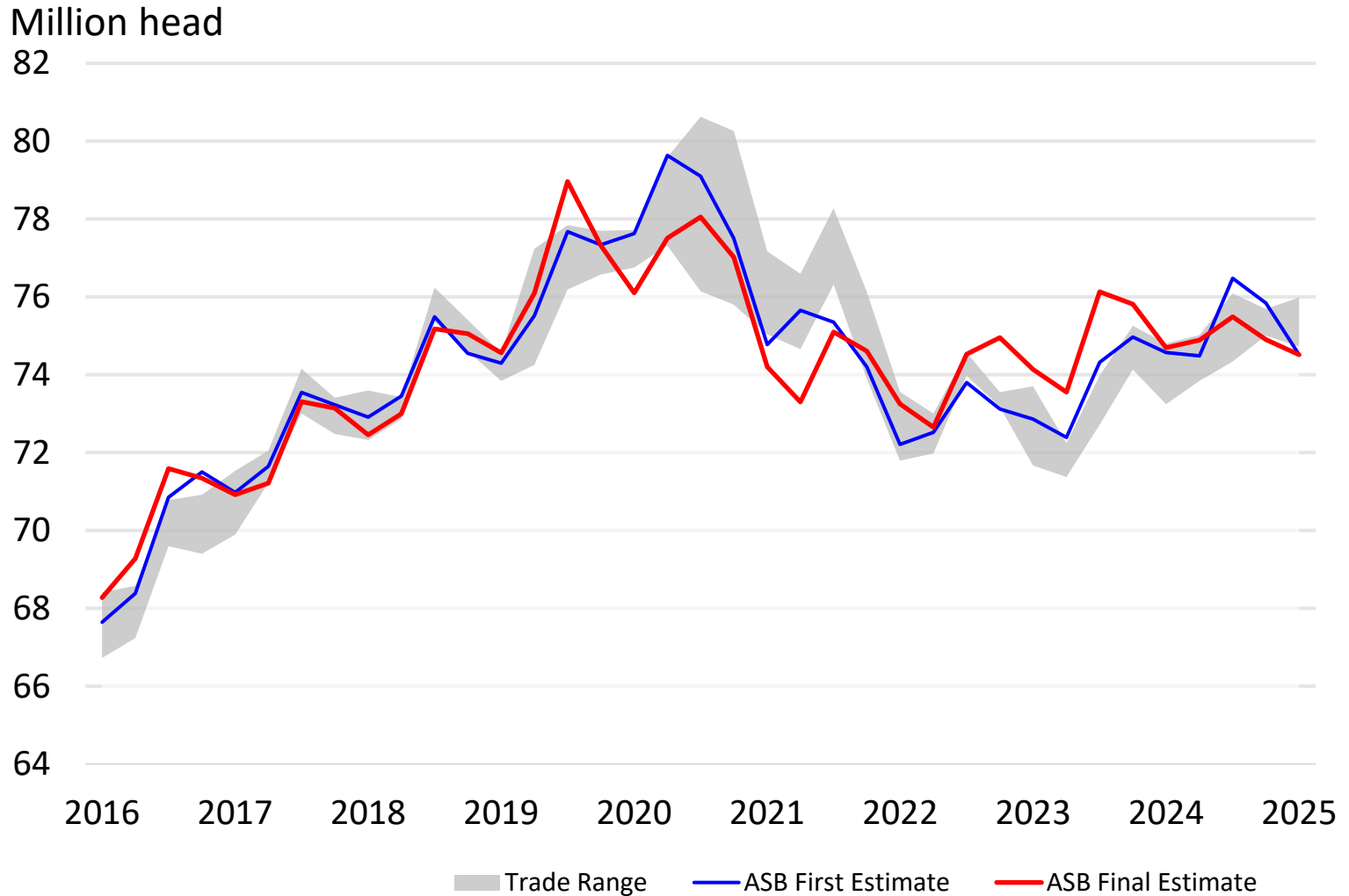


# Trade Expectations Compared to NASS Estimates Percent of Previous Year





# All Hogs and Pigs First Estimate vs Final Estimate





# Breeding Herd Inventory Disposition and Utilization



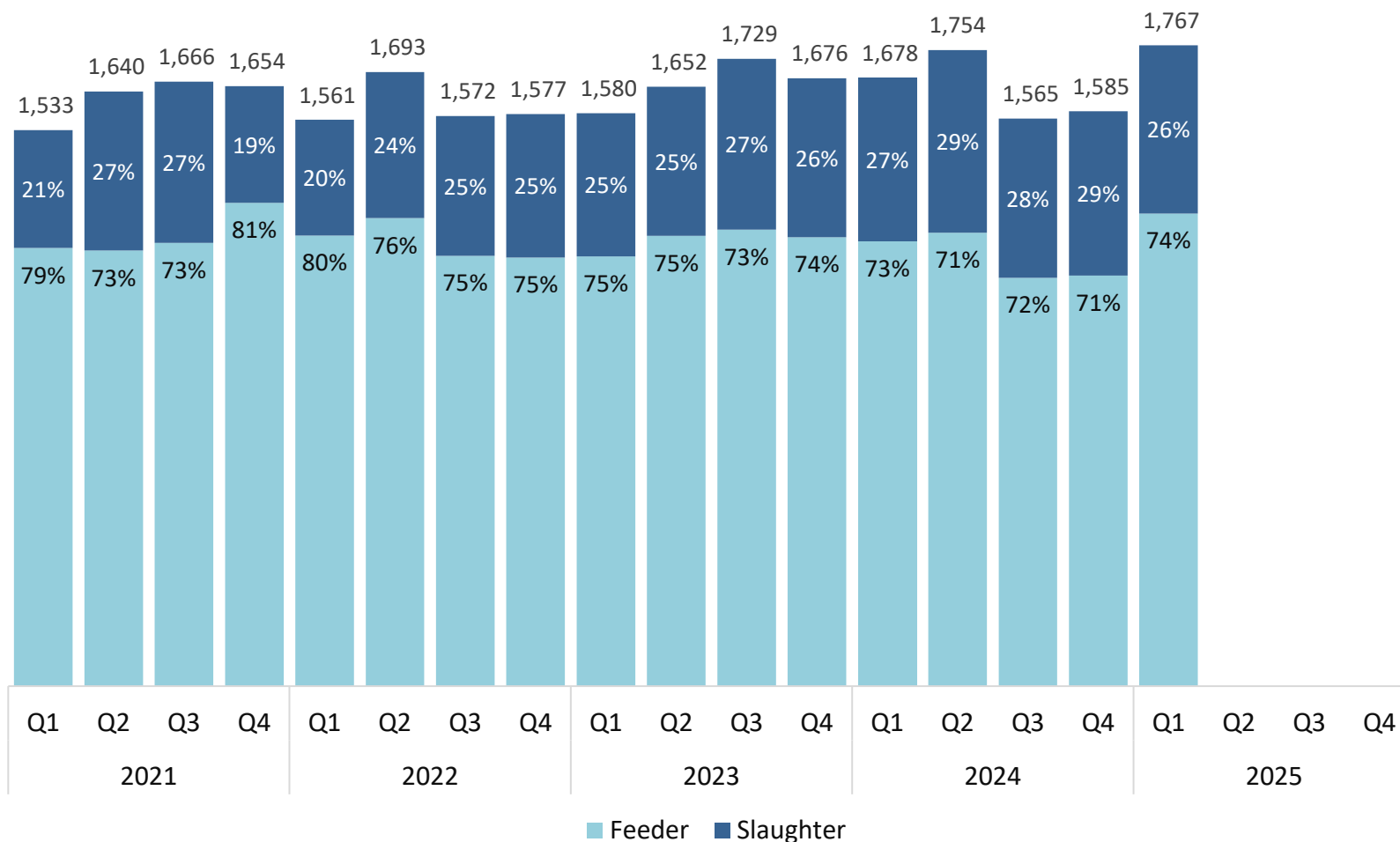
Year	Dec 1 Estimate (1,000 head)	Slaughter (1,000 head)	Additions (1,000 head)	Mar 1 Estimate (1,000 head)	Sow Utilization (Percent)
2016	6,002	782	760	5,980	49
2017	6,110	802	790	6,098	49
2018	6,179	834	865	6,210	49
2019	6,326	829	852	6,349	49
2020	6,491	873	857	6,475	49
2021	6,215	873	873	6,215	47
2022	6,175	821	794	6,148	47
2023	6,204	826	768	6,146	48
2024	5,999	887	904	6,016	49
2025	6,004	828	804	5,980	48



# Canadian Imports by Quarter

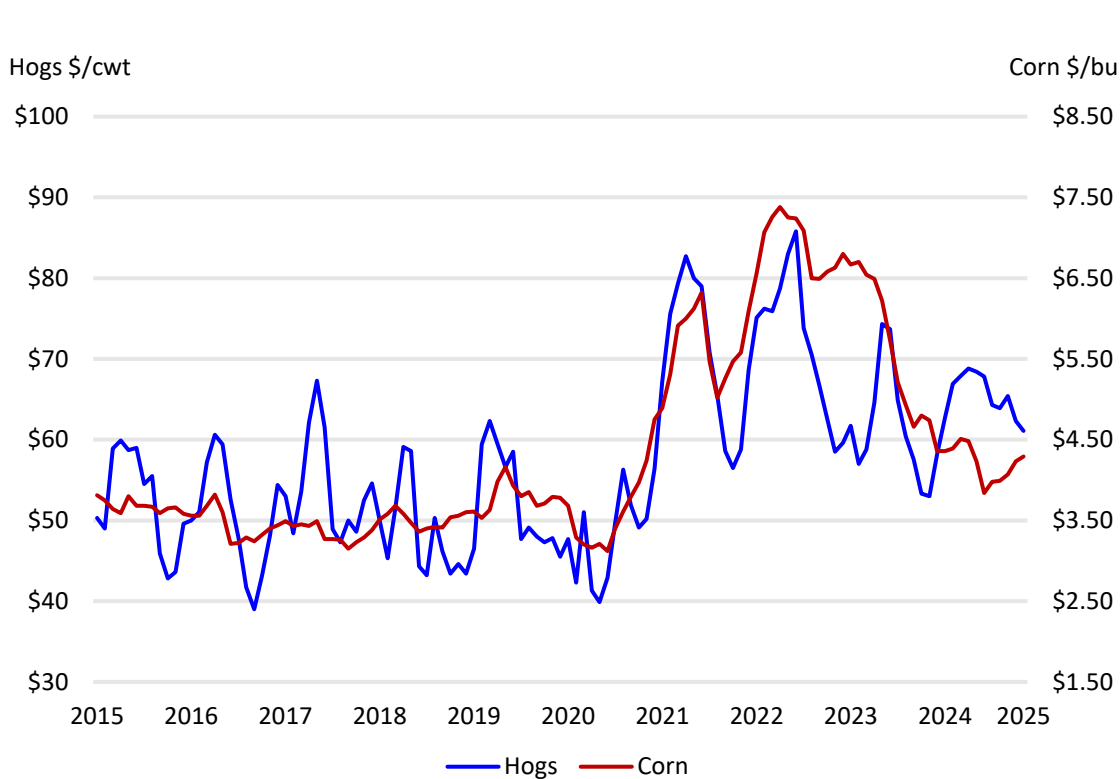
## Feeder Pigs and Slaughter Hogs

(1,000 head)





# U.S. Prices Received by Farmers for Hogs and Corn



	Hogs	Corn
Month	\$/cwt	\$/bu
August	67.8	3.84
September	64.3	3.98
October	63.9	3.99
November	65.4	4.07
December	62.3	4.23
January	61.1	4.29

	Hog to Corn
Month	Ratio
August	17.66
September	16.16
October	16.02
November	16.07
December	14.73
January	14.24



# Upcoming Reports



March 31	Agricultural Prices Grain Stocks Prospective Plantings
April 1	Cotton Systems Fats & Oils Grain Crushing
April 4	Dairy Products
April 10	Crop Production
April 17	Cattle on Feed
April 29	Meat Animals - PDI

<https://www.nass.usda.gov/Publications/index.php>



# USDA Spring Data Users' Meeting

A dark blue banner with a light blue wave pattern of dots. The text is white and cyan. It includes the event title, date, time, and logos for USDA and Agriculture Counts.

Spring 2025  
**USDA Data Users' Meeting**  
April 29  
12 p.m. ET on Zoom

USDA 

**April 29, 2025**  
**Starting at 12:00pm ET**

For more information and to register please go to  
[www.nass.usda.gov/go/data\\_users](http://www.nass.usda.gov/go/data_users)



**All Reports Available At**

**[www.nass.usda.gov](http://www.nass.usda.gov)**

**For Questions**

**(202) 692-0069**

**(800) 727-9540**

**[nass@usda.gov](mailto:nass@usda.gov)**