

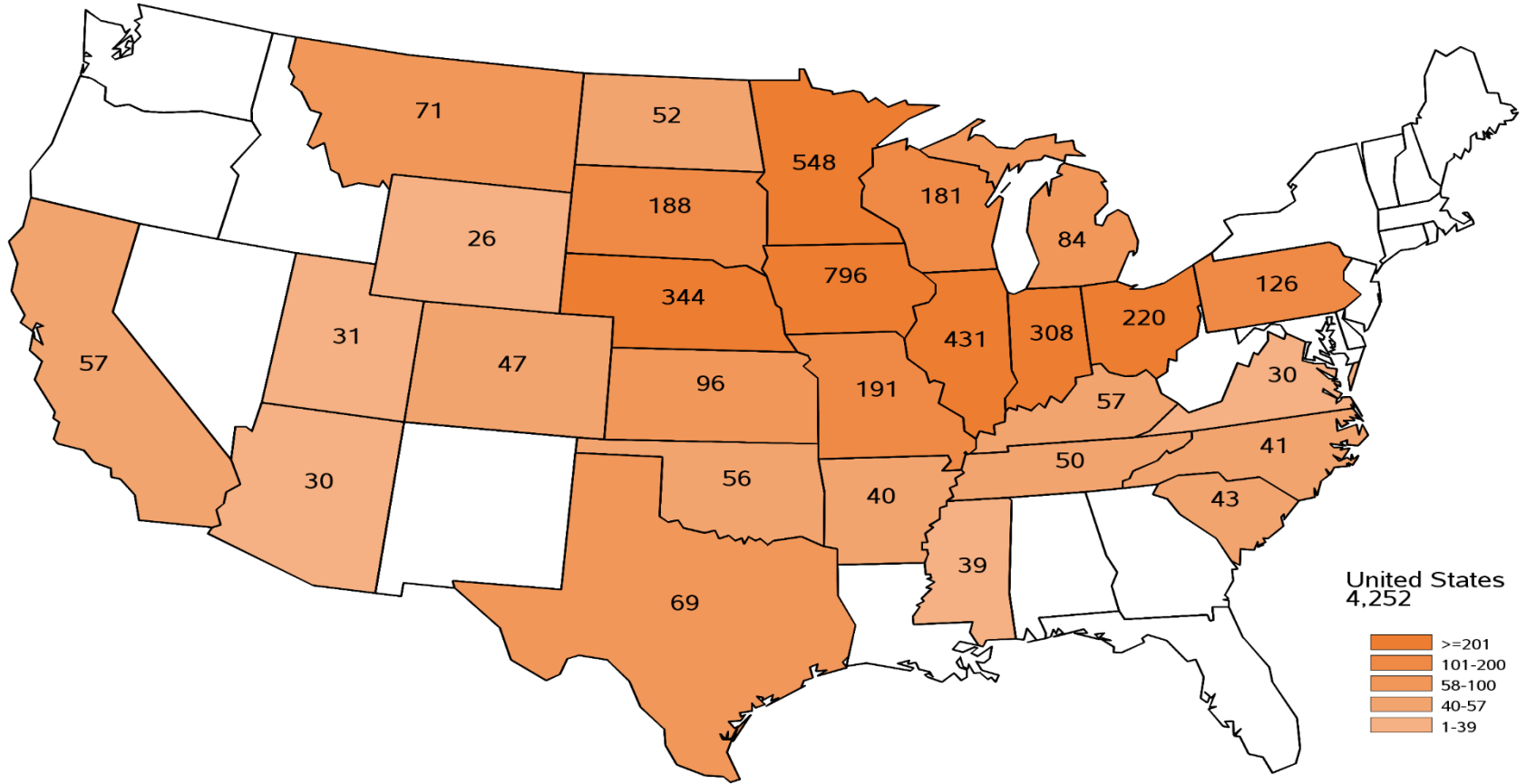


March Quarterly Hogs and Pigs

Agricultural Statistics Board Briefing

Travis Averill, Chief
Livestock Branch

2026 March Hogs and Pigs Survey Sample Size





U.S. Hogs and Pigs Revisions



Survey	Item	Initial Estimate (1,000 head)	Current Revision (1,000 head)	Net Revision (1,000 head)	Current Estimate (1,000 head)
September 1, 2025	All Hogs and Pigs	74,472	120	966	75,438
	Pig Crop	34,078	114	966	35,044
December 1, 2025	All Hogs and Pigs	75,545	-130	-130	75,415



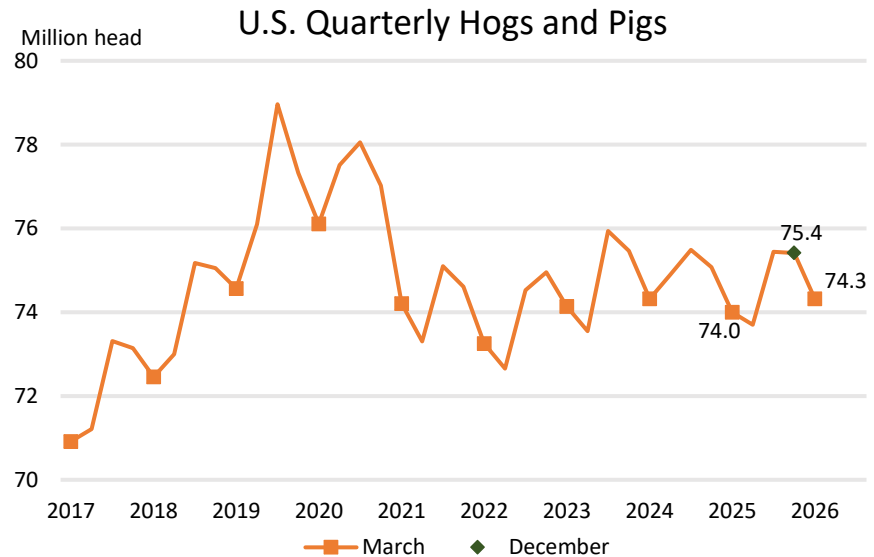
U.S. Hogs and Pigs March 1



	2025 (1,000 head)	2026	% Change from Previous Year	
All Hogs and Pigs	73,997	74,321	↑	0.4
Breeding Hogs	5,980	5,892	↓	1.5
Market Hogs	68,017	68,429	↑	0.6

**Top 5 States
Inventory**
(1,000 head)

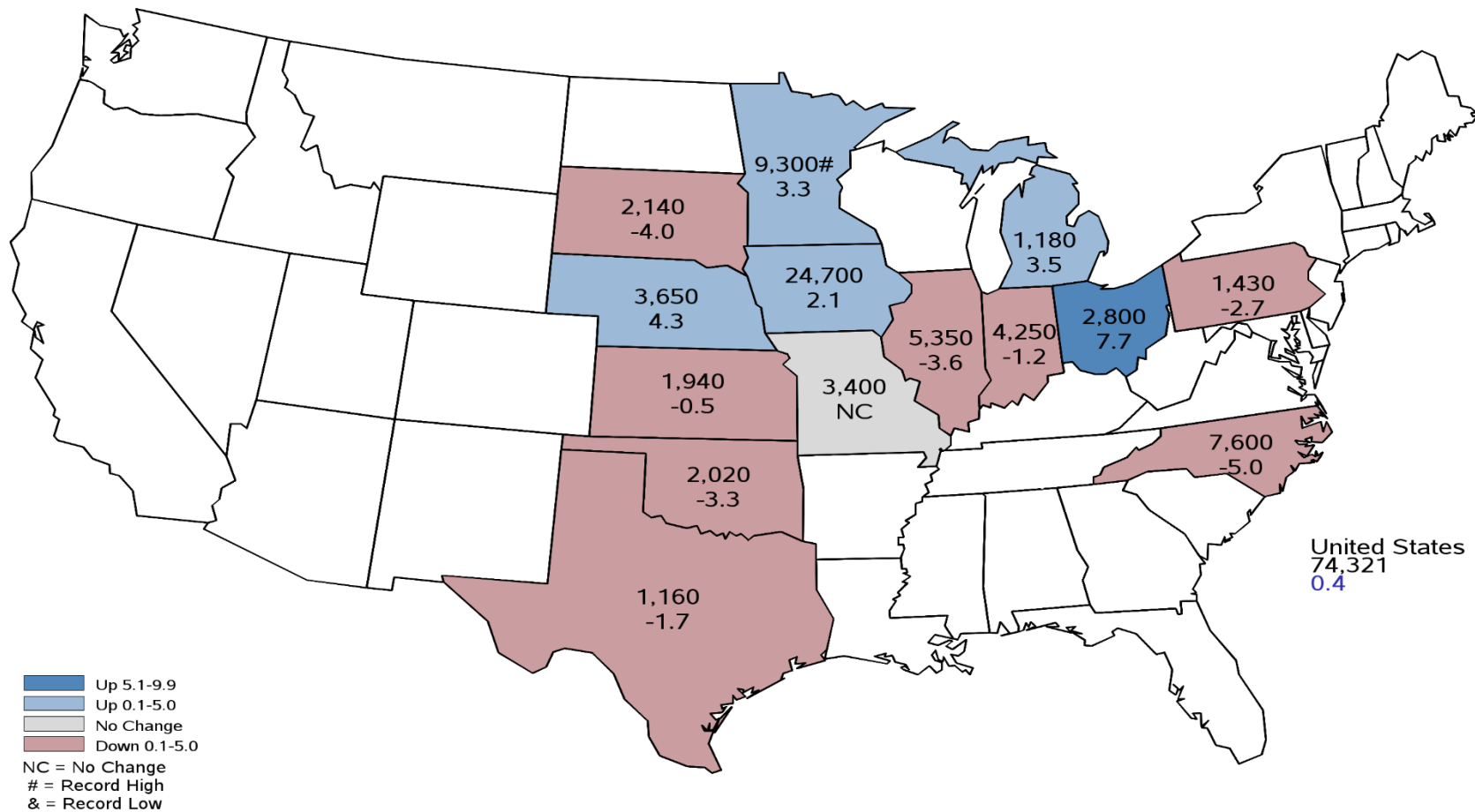
Iowa	24,700
Minnesota	9,300
North Carolina	7,600
Illinois	5,350
Indiana	4,250





March 1, 2026 Hogs and Pigs Inventory

(1,000) Head and Percent Change from Previous Year

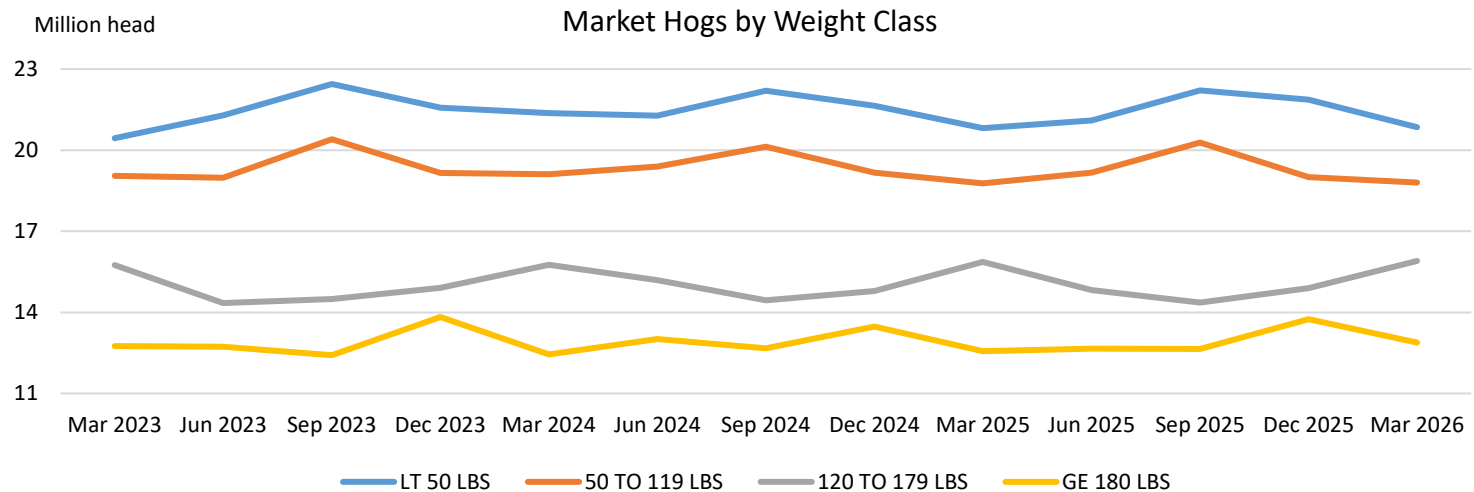




U.S. Hogs and Pigs March 1



	2025 (1,000 head)	2026	% Change from Previous Year	
Market Hogs	68,017	68,429	↑	0.6
Less than 50 lbs	20,811	20,851	↑	0.2
50 – 119 lbs	18,772	18,798	↑	0.1
120 – 179 lbs	15,865	15,902	↑	0.2
180 lbs or more	12,569	12,878	↑	2.5

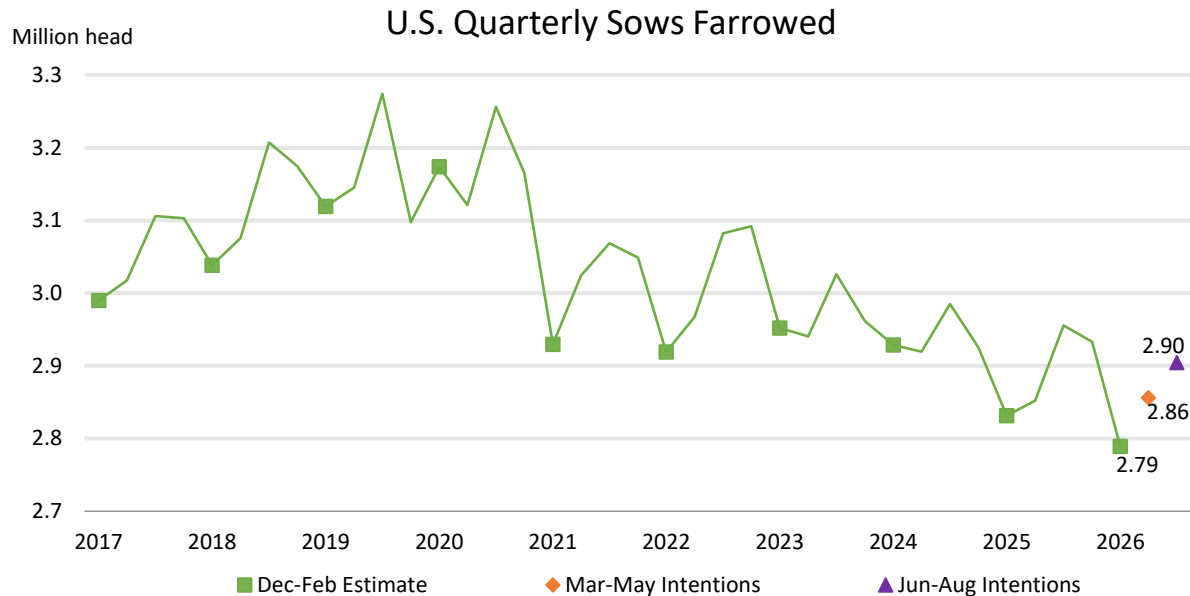




U.S. Hogs and Pigs March 1



	2025 (1,000 head)	2026	% Change from Previous Year	
Sows Farrowed	2,831	2,789	↓	1.5
Intentions				
Mar – May	2,852	2,856	↑	0.1
Jun – Aug	2,965	2,904	↓	2.1

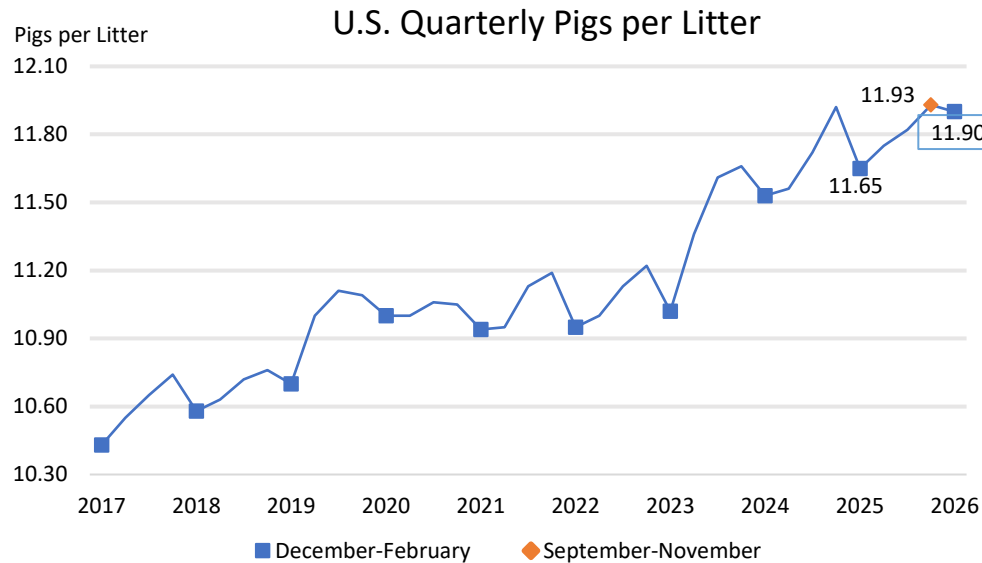




U.S. Hogs and Pigs March 1

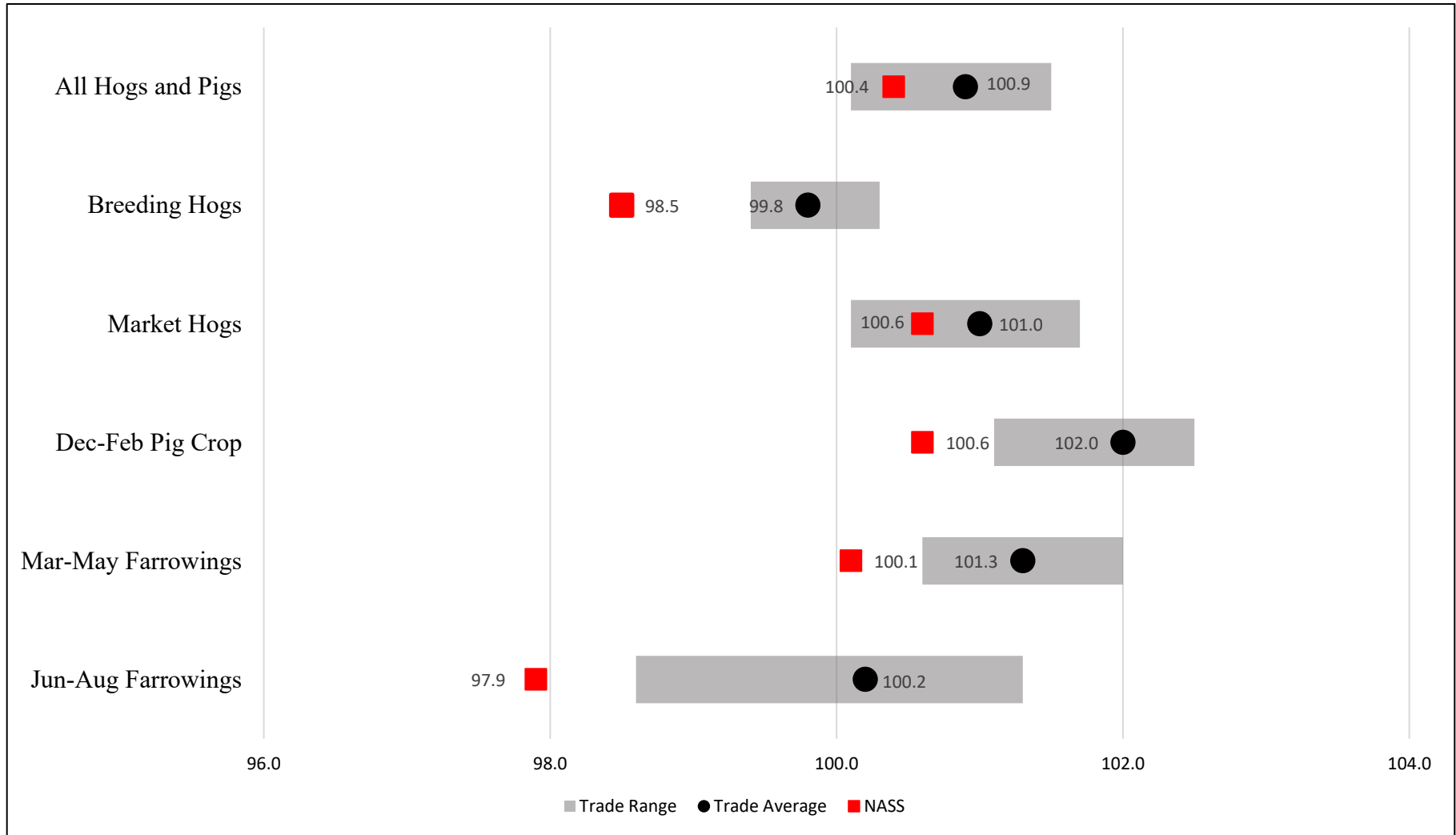


	2025 (1,000 head)	2026 (1,000 head)	% Change from Previous Year	
Pig Crop	32,989	33,177	↑	0.6
	(Number)			
Pigs per Litter	11.65	11.90	↑	2.1



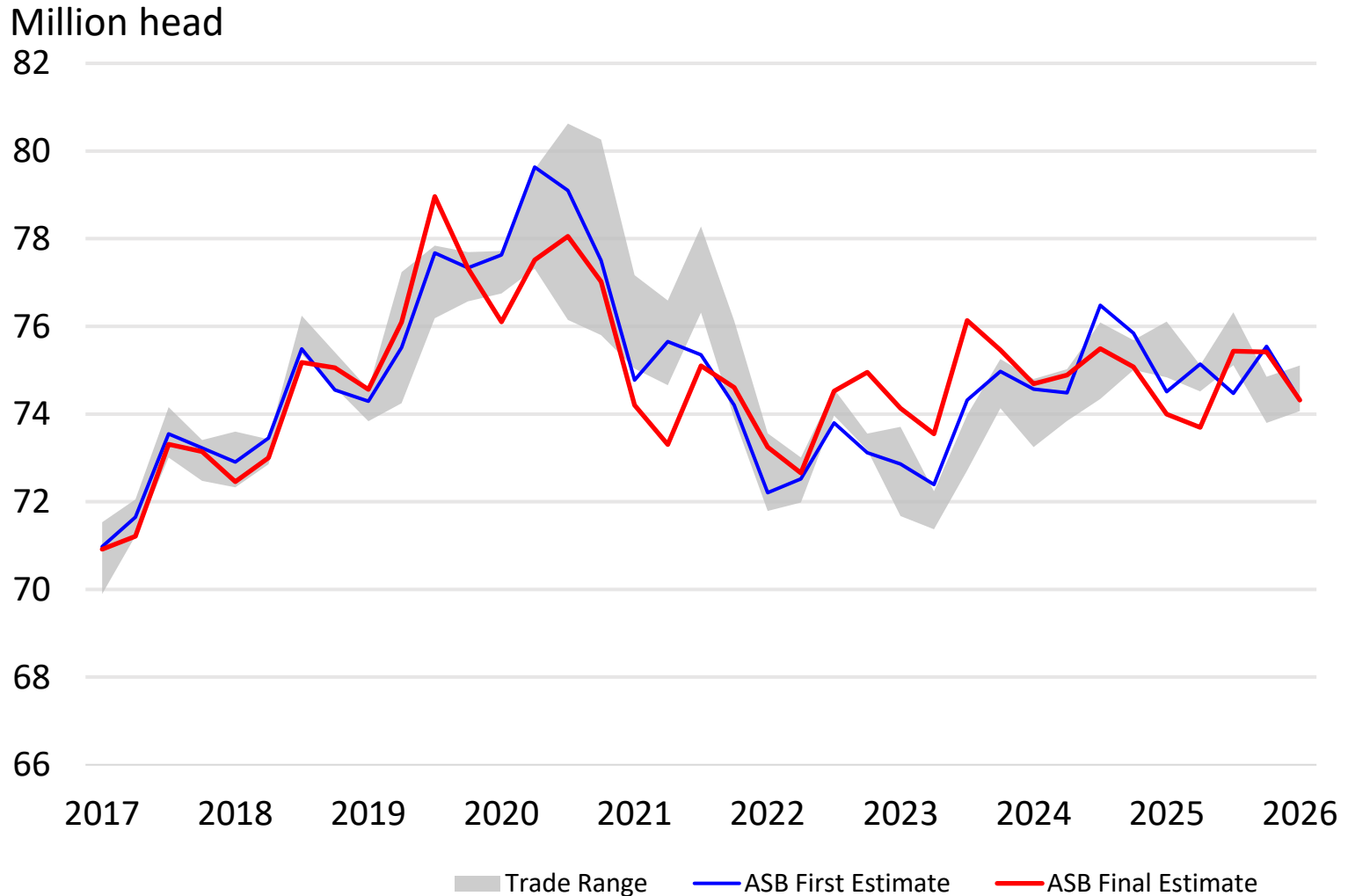


Trade Expectations Compared to NASS Estimates Percent of Previous Year





All Hogs and Pigs First Estimate vs Final Estimate





Breeding Herd Inventory Disposition and Utilization



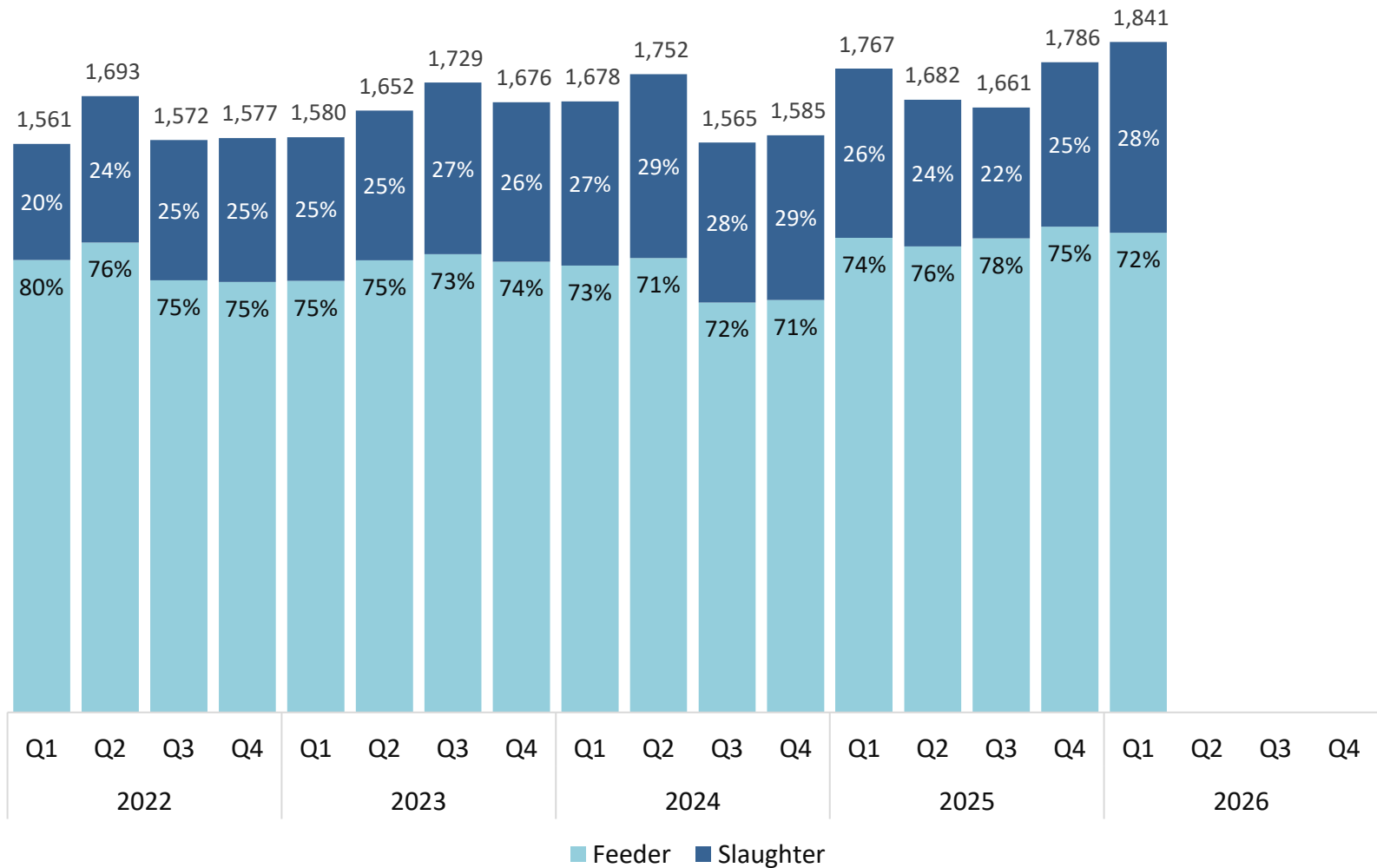
Year	Dec 1 Estimate (1,000 head)	Slaughter (1,000 head)	Additions (1,000 head)	Mar 1 Estimate (1,000 head)	Sow Utilization (Percent)
2017	6,110	802	790	6,098	49
2018	6,179	834	865	6,210	49
2019	6,326	829	852	6,349	49
2020	6,491	873	857	6,475	49
2021	6,176	873	912	6,215	47
2022	6,175	821	794	6,148	47
2023	6,204	826	768	6,146	48
2024	5,999	887	904	6,016	49
2025	6,004	829	805	5,980	47
2026	5,903	795	784	5,892	47



Canadian Imports by Quarter

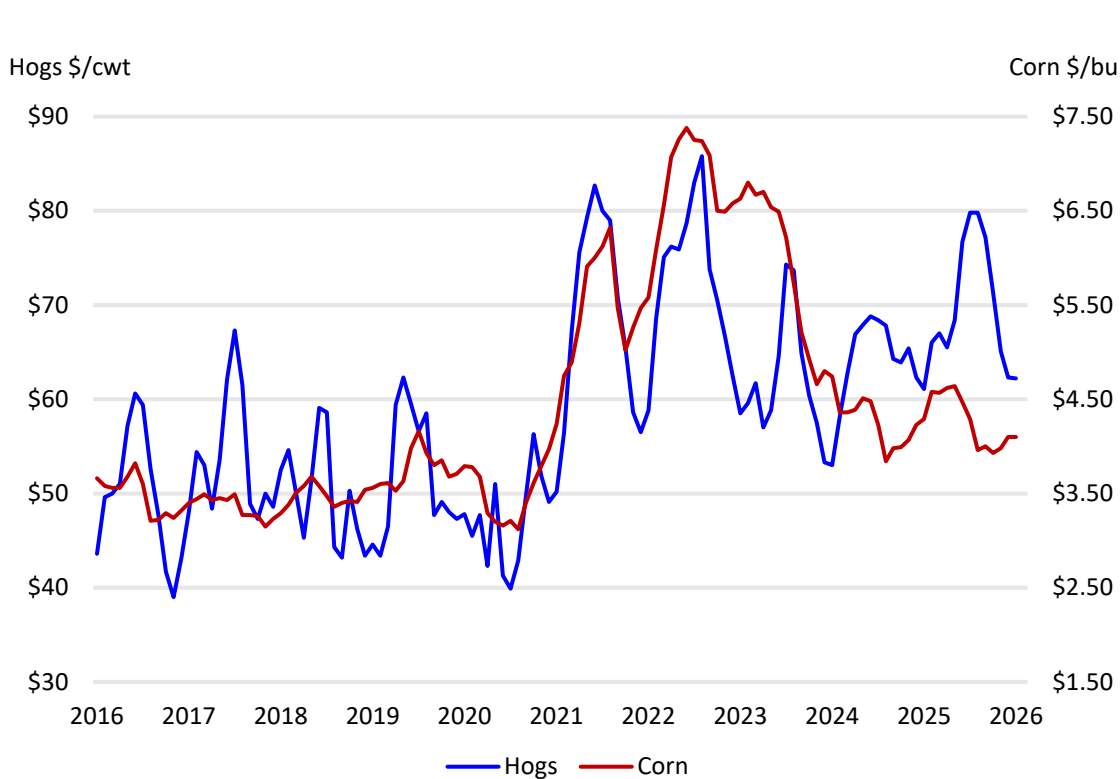
Feeder Pigs and Slaughter Hogs

(1,000 head)





U.S. Prices Received by Farmers for Hogs and Corn



	Hogs	Corn
Month	\$/cwt	\$/bu
August	79.8	3.96
September	77.2	4.00
October	71.3	3.93
November	65.1	3.98
December	62.3	4.10
January	62.2	4.10

	Hog to Corn
Month	Ratio
August	20.15
September	19.30
October	18.14
November	16.36
December	15.20
January	15.17



Upcoming Reports



March 30	Agricultural Prices
March 31	Prospective Plantings and Stocks
April 9	Crop Production
April 17	Cattle on Feed
April 22	Livestock Slaughter – Annual, Milk Production
April 23	Livestock Slaughter
April 30	Meat Animals – PDI Milk - PDI

<https://www.nass.usda.gov/Publications/index.php>



Data Users' Meeting



Spring 2026

USDA Data Users' Meeting

April 22, 2026
1 p.m. CST

Join in-person or virtually

www.nass.usda.gov/go/data_users



USDA Spring Data Users' Meeting

Join Us Online or in Kansas City

April 22, 2026

For more information and to register please go to

www.nass.usda.gov/go/data_users



All Reports Available At

www.nass.usda.gov

For Questions

(202) 692-0069

(800) 727-9540

nass@usda.gov