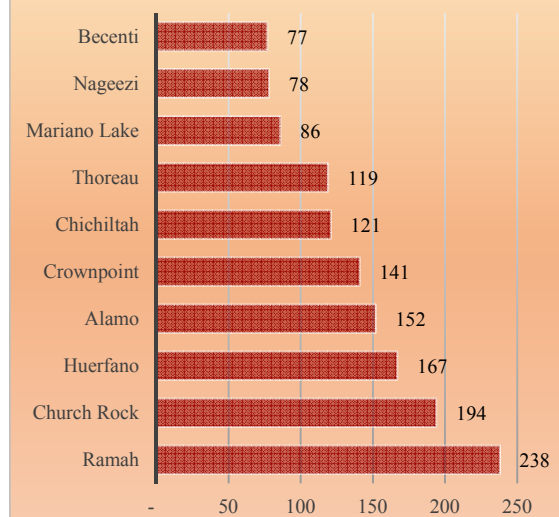


Lake Valley Chapter

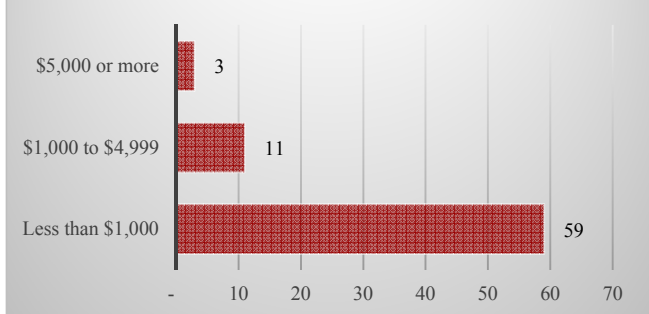
Total and Per Farm Overview

| | 2017 | % of Eastern Agency |
|-------------------------------|---------|---------------------|
| Number of Farms and Ranches | 73 | 3.0 |
| Total | | |
| | (\$) | |
| Market value of products sold | 90,200 | 2.5 |
| Crop sales | - | - |
| Livestock sales | 90,200 | 2.9 |
| Farm production expenses | 255,100 | 1.7 |
| Per farm average | | |
| | (\$) | |
| Market value of products sold | 1,236 | |
| Share of Sales by Type | | |
| | (%) | |
| Crop sales | 0.0 | |
| Livestock sales | 100.0 | |

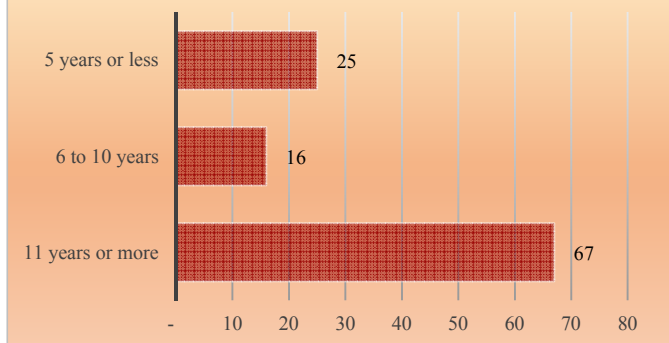
Number of Farms and Ranches, Selected Chapters, Eastern Agency



Farms and Ranches by Value of Sales



Years on Any Farm



Lake Valley Chapter

Livestock and Crop Totals

| | Farms | Inventory | % of Eastern Agency |
|-------------------|-------|-----------|---------------------|
| Livestock | | | |
| Cattle and calves | 32 | 425 | 3.2 |
| Beef cows | 25 | 284 | 4.1 |
| Sheep and lambs | 30 | 375 | 1.5 |
| Horses and ponies | 43 | 189 | 3.7 |
| Goats | 13 | 58 | 0.7 |



| | Farms | Acres | % of Eastern Agency |
|--------------------------|-------|-------|---------------------|
| Crops | | | |
| Corn, traditional, acres | - | - | - |
| Hay and haylage, acres | - | - | - |
| Vegetables, acres | - | - | - |
| Cantaloupes, acres | - | - | - |
| Honeydew melons, acres | - | - | - |
| Squash, all, acres | - | - | - |
| Watermelons, acres | - | - | - |

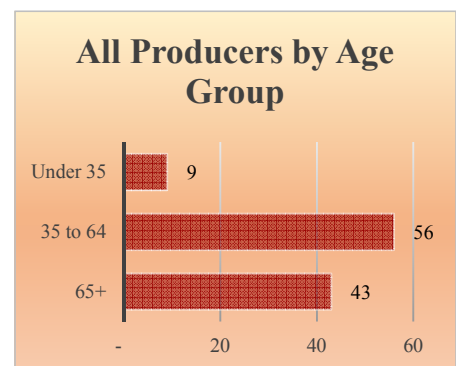
Total Producers^a **108**
Average age (years) **60.4**

Sex

| | |
|--------|----|
| Female | 48 |
| Male | 60 |

Other characteristics

| | |
|---------------------------|----|
| With military service | 16 |
| New and beginning farmers | 41 |
| Young Producers | 15 |



See 2017 Census of Agriculture, U.S. Summary and State Data, for complete footnotes, explanations, definitions, commodity descriptions, and methodology. ^a Data collected for a maximum of four producers per farm. (D) Withheld to avoid disclosing data for individual operations. (NA) Not available. (-) Represents zero.