



ISSN: 1948-9099

Released July 23, 2021, by the National Agricultural Statistics Service (NASS), Agricultural Statistics Board, United States Department of Agriculture (USDA).

July 1 Cattle Inventory Down 1 Percent

All cattle and calves in the United States on July 1, 2021 totaled 101 million head, 1 percent below the 102 million head on July 1, 2020.

All cows and heifers that have calved totaled 40.9 million head, 1 percent below the 41.4 million head on July 1, 2020. Beef cows, at 31.4 million head, down 2 percent from a year ago. Milk cows, at 9.50 million head, up 2 percent from previous year.

All heifers 500 pounds and over on July 1, 2021 totaled 16.0 million head, 1 percent below the 16.2 million head on July 1, 2020. Beef replacement heifers, at 4.30 million head, down 2 percent from a year ago. Milk replacement heifers, at 4.10 million head, up 3 percent from previous year. Other heifers, at 7.60 million head, 3 percent below a year earlier.

Steers 500 pounds and over on July 1, 2021 totaled 14.5 million head, down 1 percent from July 1, 2020.

Bulls 500 pounds and over on July 1, 2021 totaled 2.10 million head, unchanged from previous year.

Calves under 500 pounds on July 1, 2021 totaled 27.4 million head, down 1 percent from a year earlier.

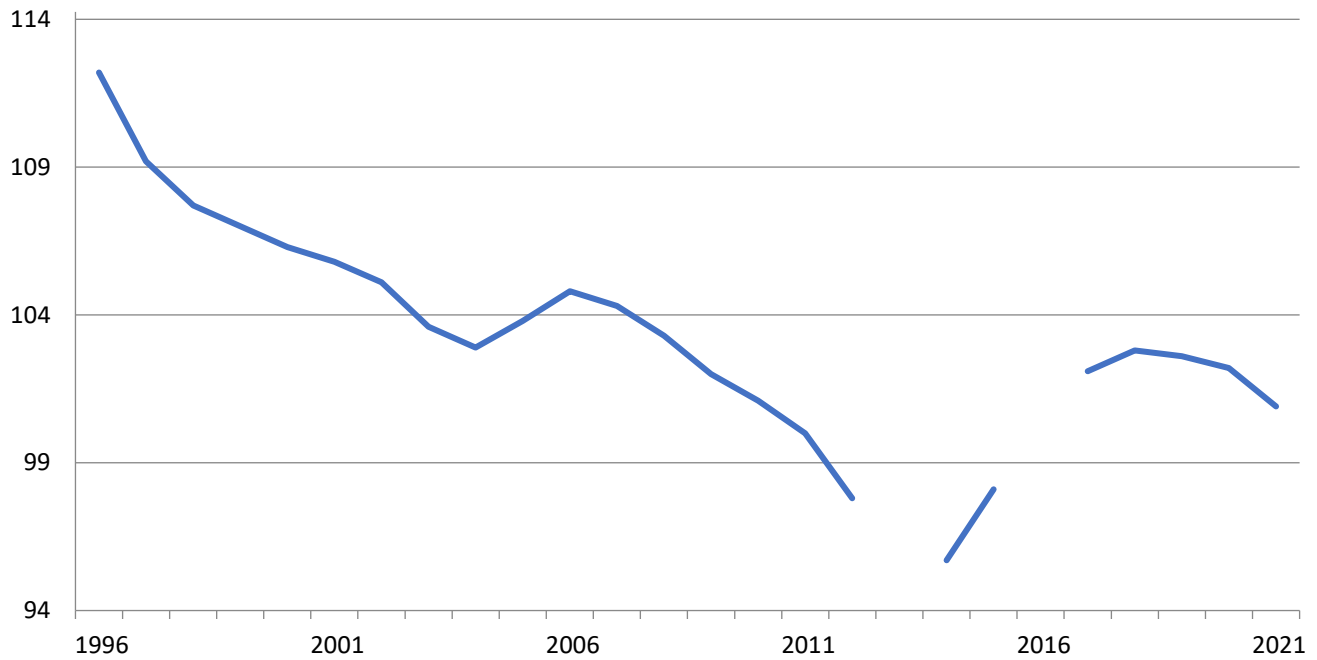
Cattle and calves on feed for the slaughter market in the United States for all feedlots totaled 13.4 million head on July 1, 2021, down 1 percent from previous year. Cattle on feed in feedlots with capacity of 1,000 or more head accounted for 84.3 percent of the total cattle on feed on July 1, 2021, up slightly from previous year. The total of calves under 500 pounds and other heifers and steers over 500 pounds (outside of feedlots), at 36.1 million head, down 2 percent from the 36.7 million head on July 1, 2020.

Calf Crop Down Slightly

The 2021 calf crop in the United States is expected to be 35.1 million head, down slightly from last year. Calves born during the first half of 2021 are estimated at 25.8 million head, up slightly from the first half of 2020. An additional 9.30 million calves are expected to be born during the second half of 2021.

Cattle Inventory – United States: July 1

Million head



The July Cattle report was suspended in 2013 and 2016 due to sequestration.

This report was approved on July 23, 2021.

Secretary of Agriculture
Designate
Seth Meyer

Agricultural Statistics Board
Chairperson
Joseph L. Parsons

Cattle Inventory by Class and Calf Crop – United States: July 1, 2020 and 2021

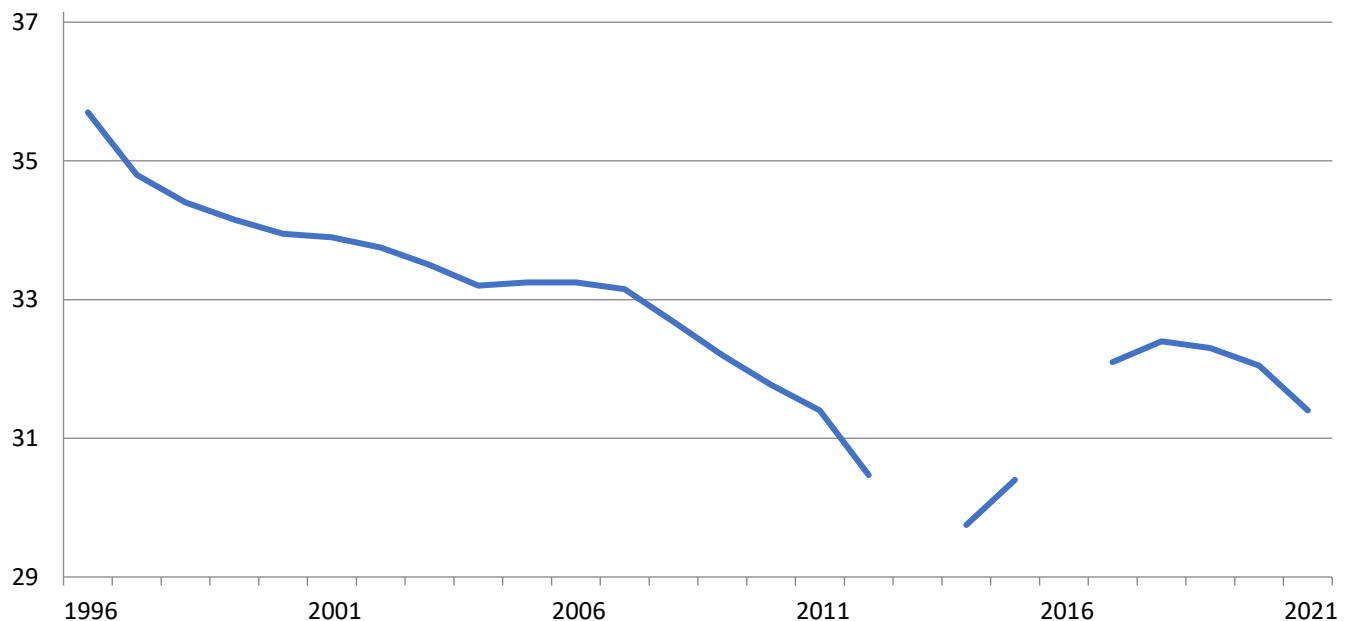
Class	2020	2021	Percent of previous year
	(1,000 head)	(1,000 head)	(percent)
Cattle and calves	102,200.0	100,900.0	99
Cows and heifers that have calved	41,400.0	40,900.0	99
Beef cows	32,050.0	31,400.0	98
Milk cows	9,350.0	9,500.0	102
Heifers 500 pounds and over	16,200.0	16,000.0	99
For beef cow replacement	4,400.0	4,300.0	98
For milk cow replacement	4,000.0	4,100.0	103
Other heifers	7,800.0	7,600.0	97
Steers 500 pounds and over	14,700.0	14,500.0	99
Bulls 500 pounds and over	2,100.0	2,100.0	100
Calves under 500 pounds	27,800.0	27,400.0	99
Cattle on feed	13,600.0	13,400.0	99
Calf crop	35,135.5	35,100.0	100

Calf Crop and Percent of Total by Six-Month Period – United States: 2020 and Preliminary 2021

Period	2020		2021	
	Number	Percent of total	Number	Percent of total
	(1,000 head)	(percent)	(1,000 head)	(percent)
January 1 - June 30	25,750.0	73.3	25,800.0	73.5
July 1 - December 31	9,385.5	26.7	9,300.0	26.5
Total	35,135.5	100.0	35,100.0	100.0

Beef Cow Inventory – United States: July 1

Million head



The July Cattle report was suspended in 2013 and 2016 due to sequestration.

Statistical Methodology

Survey Procedures: A random sample of United States producers were surveyed to provide data for these estimates. Survey procedures ensured that all cattle producers, regardless of size, had a chance to be included in the survey. During the first half of June, a probability area frame survey was conducted with a sample of approximately 9,100 segments or parcels of land. Data collected during the June Area Survey were used from cattle operations not on the list frame. During July, a probability list frame survey with a sample of approximately 16,000 producers and feedlots was conducted. These operations were contacted during the first half of July by mail, telephone, and internet, and the response rate was 55 percent. Operators were asked to report inventories as of the first of the month and calf crop for the entire year of 2021.

Estimating Procedures: These cattle estimates were prepared by the Agricultural Statistics Board after reviewing National indications and analysis. National survey data was reviewed for reasonableness with estimates from the previous year using a balance sheet. The balance sheet begins with the previous inventory estimate, adds to it estimates of births and imports for the first six months, and subtracts estimates of slaughter, exports, and deaths for the first six months of the current year. This indicated ending inventory level is compared to the Agricultural Statistics Board estimate for reasonableness. Class estimates are rounded to the nearest 100,000 head with the exception of beef and milk cows which are rounded to the nearest 50,000 head.

Revision Policy: Revisions to previous estimates are made to improve year to year and item to item relationships. Estimates for the previous year are subject to revision when current estimates are made and when the January 1 cattle inventory estimates are made. The revisions are primarily based on livestock slaughter and additional foreign trade and survey data. Estimates will also be reviewed after data from the five-year *Census of Agriculture* are available. No revisions will be made after that date.

Reliability: Since all cattle operators are not included in the sample, survey estimates are subject to sampling variability. Survey results are also subject to non-sampling errors such as omissions, duplications, and mistakes in reporting, recording, and processing the data. The effects of these errors cannot be measured directly. They are minimized through rigid quality controls in the data collection process and through a careful review of all reported data for consistency and reasonableness.

To assist users in evaluating the reliability of estimates in this report, the "**Root Mean Square Error**" is shown for selected items in the following table. The "Root Mean Square Error" is a statistical measure based on past performance and is computed using the differences between first and latest estimates. The "Root Mean Square Error" for July cattle inventory estimates over the past 10 years is 0.4 percent. This means that chances are 2 out of 3 that the final estimate will not be above or below the current estimate of 101 million head by more than 0.4 percent. Chances are 9 out of 10 that the difference will not exceed 0.8 percent.

The table on the following page shows a 10 year record of the range of differences between first and latest estimates for selected items. Using estimates of all cattle and calves as an example, changes between the first inventory estimate and the latest estimate during the past 10 years have averaged 360,000 head, ranging from 0 to 800,000 head. During this period the initial inventory estimate has been below the latest estimate 3 times and has been above the latest estimate 5 times. This does not imply that the July 1 estimate is likely to understate or overstate final inventory.

Reliability of July 1 Cattle Estimates

[Based on data from the past 10 years]

Item	Root mean square error	90 percent confidence level	Difference between first and latest estimate				
			Average	Smallest	Largest	Years	
						Below latest	Above latest
	(percent)	(percent)	(1,000 head)	(1,000 head)	(1,000 head)	(number)	(number)
All cattle and calves	0.4	0.8	360	0	800	3	5
All cows and heifers that have calved	0.3	0.6	80	0	400	1	4
Calf crop	1.1	2.0	289	20	708	0	10

Information Contacts

Listed below are the commodity specialists in the Livestock Branch of the National Agricultural Statistics Service to contact for additional information. E-mail inquiries may be sent to nass@usda.gov.

Travis Averill, Chief, Livestock Branch	(202) 692-0069
Scott Hollis, Head, Livestock Section	(202) 690-2424
Sherry Bertramsen – Livestock Slaughter	(202) 690-8632
Ryan Cowen – Cattle, Cattle on Feed	(202) 720-3040
Anthony Fischer – Hogs and Pigs	(202) 720-3106
Logan Hartley-Sanguinett – Sheep and Goats	(202) 690-3236
Mike Miller – Milk Production and Milk Cows	(202) 720-3278
Suzanne Richards – Dairy Products	(202) 720-4448

Access to NASS Reports

For your convenience, you may access NASS reports and products the following ways:

- All reports are available electronically, at no cost, on the NASS web site: www.nass.usda.gov
- Both national and state specific reports are available via a free e-mail subscription. To set-up this free subscription, visit www.nass.usda.gov and click on “National” or “State” in upper right corner above “search” box to create an account and select the reports you would like to receive.
- Cornell’s Mann Library has launched a new website housing NASS’s and other agency’s archived reports. The new website, <https://usda.library.cornell.edu>. All email subscriptions containing reports will be sent from the new website, <https://usda.library.cornell.edu>. To continue receiving the reports via e-mail, you will have to go to the new website, create a new account and re-subscribe to the reports. If you need instructions to set up an account or subscribe, they are located at: <https://usda.library.cornell.edu/help>. You should whitelist notifications@usda-esmis.library.cornell.edu in your email client to avoid the emails going into spam/junk folders.

For more information on NASS surveys and reports, call the NASS Agricultural Statistics Hotline at (800) 727-9540, 7:30 a.m. to 4:00 p.m. ET, or e-mail: nass@usda.gov.

The U.S. Department of Agriculture (USDA) prohibits discrimination against its customers, employees, and applicants for employment on the basis of race, color, national origin, age, disability, sex, gender identity, religion, reprisal, and where applicable, political beliefs, marital status, familial or parental status, sexual orientation, or all or part of an individual's income is derived from any public assistance program, or protected genetic information in employment or in any program or activity conducted or funded by the Department. (Not all prohibited bases will apply to all programs and/or employment activities.)

If you wish to file a Civil Rights program complaint of discrimination, complete the [USDA Program Discrimination Complaint Form](#) (PDF), found online at www.ascr.usda.gov/filing-program-discrimination-complaint-usda-customer, or at any USDA office, or call (866) 632-9992 to request the form. You may also write a letter containing all of the information requested in the form. Send your completed complaint form or letter to us by mail at U.S. Department of Agriculture, Director, Office of Adjudication, 1400 Independence Avenue, S.W., Washington, D.C. 20250-9410, by fax (202) 690-7442 or email at program.intake@usda.gov.