



Released January 21, 2022, by the National Agricultural Statistics Service (NASS), Agricultural Statistics Board, United States Department of Agriculture (USDA).

United States Cattle on Feed Up 1 Percent

Cattle and calves on feed for the slaughter market in the United States for feedlots with capacity of 1,000 or more head totaled 12.0 million head on January 1, 2022. The inventory was 1 percent above January 1, 2021. This is the second highest January 1 inventory since the series began in 1996. The inventory included 7.36 million steers and steer calves, down 1 percent from the previous year. This group accounted for 61 percent of the total inventory. Heifers and heifer calves accounted for 4.68 million head, up 2 percent from 2021.

Placements in feedlots during December totaled 1.96 million head, 6 percent above 2020. Placements were the highest for December since the series began in 1996. Net placements were 1.91 million head. During December, placements of cattle and calves weighing less than 600 pounds were 510,000 head, 600-699 pounds were 470,000 head, 700-799 pounds were 450,000 head, 800-899 pounds were 333,000 head, 900-999 pounds were 105,000 head, and 1,000 pounds and greater were 95,000 head.

Marketings of fed cattle during December totaled 1.86 million head, slightly above 2020. Marketings were the second highest for December since the series began in 1996.

Other disappearance totaled 54,000 head during December, 10 percent below 2020.

Cattle on Feed Inventory, Placements, Marketings, and Other Disappearance on 1,000+ Capacity Feedlots – United States: January 1, 2021 and 2022

[December preceding year]

Item	2021	2022	Percent of previous year	
	(1,000 head)	(1,000 head)	(percent)	
On feed December 1	12,036	11,985	100	
Placed on feed during December	1,844	1,963	106	
Fed cattle marketed during December	1,853	1,857	100	
Other disappearance during December	60	54	90	
On feed January 1	11,967	12,037	101	

Cattle on Feed Inventory, Placements, Marketings, and Other Disappearance on 1,000+ Capacity Feedlots – United States: December 1, 2020 and 2021

Item	2020	2021	Percent of previous year	
	(1,000 head)	(1,000 head)	(percent)	
On feed November 1	11,973	11,948	100	
Placed on feed during November	1,903	1,971	104	
Fed cattle marketed during November	1,779	1,873	105	
Other disappearance during November	61	61	100	
On feed December 1	12,036	11,985	100	

Cattle on Feed by Class on 1,000+ Capacity Feedlots – United States: January 1, 2021 and 2022

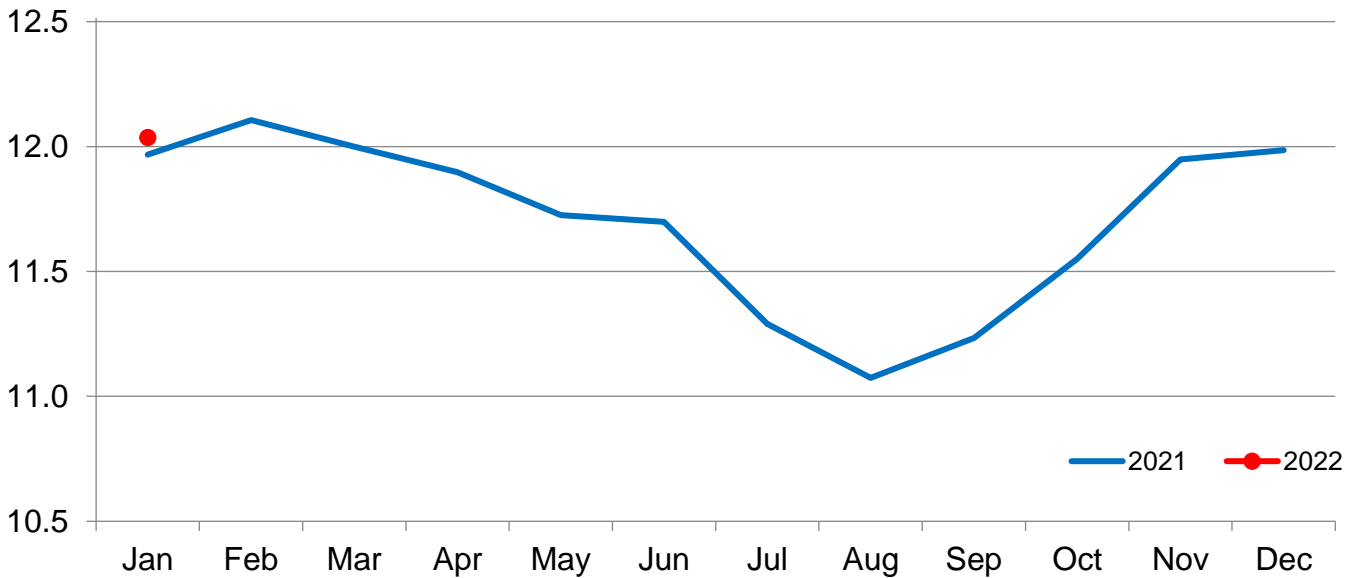
Item	2021	2022	Percent of	
			previous year	inventory
			(percent)	(percent)
Class on feed January 1	(1,000 head)	(1,000 head)		
Steers and steer calves	7,402	7,362	99	61
Heifers and heifer calves	4,565	4,675	102	39

Cattle on Feed Inventory on 1,000+ Capacity Feedlots by Month – States and United States: 2021 and 2022

State	January 1, 2021	December 1, 2021	January 1, 2022		
			Inventory	Percent of previous year	Percent of previous month
	(1,000 head)	(1,000 head)	(1,000 head)	(percent)	(percent)
Arizona	262	270	272	104	101
California	555	550	555	100	101
Colorado	1,110	1,140	1,130	102	99
Idaho	285	310	310	109	100
Iowa	610	610	600	98	98
Kansas	2,500	2,480	2,490	100	100
Minnesota	115	105	100	87	95
Nebraska	2,550	2,580	2,600	102	101
Oklahoma	325	300	310	95	103
South Dakota	245	235	230	94	98
Texas	2,870	2,880	2,920	102	101
Washington	235	210	210	89	100
Other States	305	315	310	102	98
United States	11,967	11,985	12,037	101	100

Cattle on Feed Inventory on 1,000+ Capacity Feedlots – United States

Million head

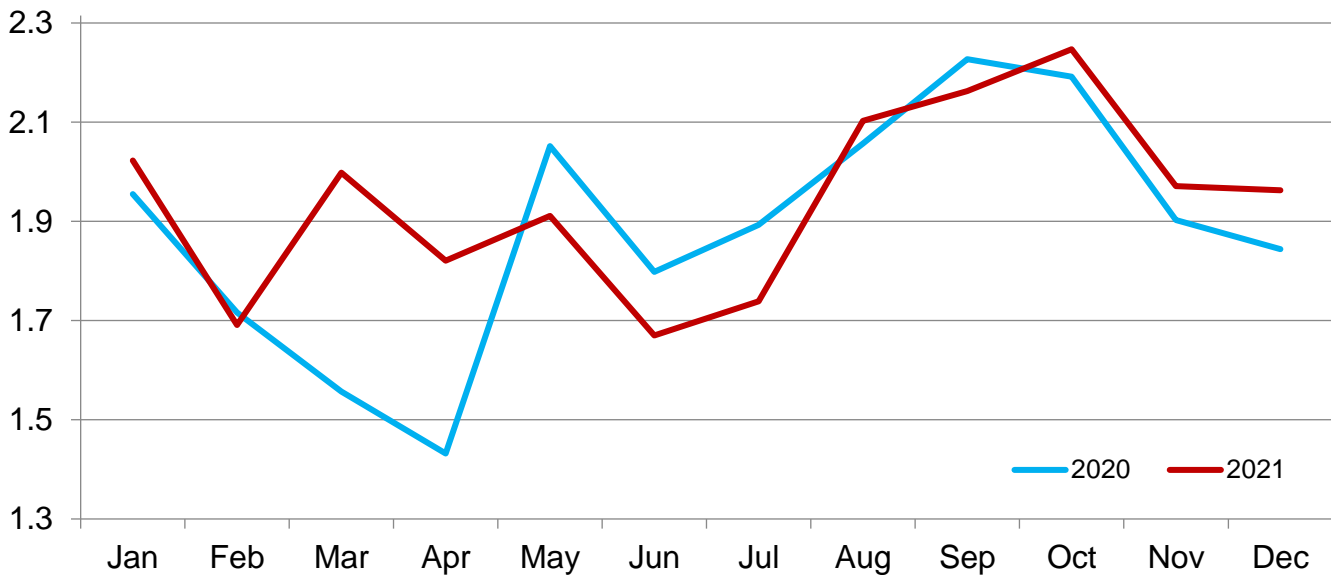


Cattle Placed on Feed on 1,000+ Capacity Feedlots by Month – States and United States: 2020 and 2021

State	During December 2020 (1,000 head)	During November 2021 (1,000 head)	During December 2021		
			Placements (1,000 head)	Percent of previous year (percent)	Percent of previous month (percent)
Arizona	32	27	30	94	111
California	65	61	67	103	110
Colorado	155	160	165	106	103
Idaho	41	44	41	100	93
Iowa	93	94	87	94	93
Kansas	440	435	450	102	103
Minnesota	9	16	11	122	69
Nebraska	480	490	505	105	103
Oklahoma	43	44	46	107	105
South Dakota	40	62	43	108	69
Texas	380	445	445	117	100
Washington	25	32	30	120	94
Other States	41	61	43	105	70
United States	1,844	1,971	1,963	106	100

Cattle Placed on 1,000+ Capacity Feedlots – United States

Million head



Cattle Placed on Feed by Weight Group on 1,000+ Capacity Feedlots and Month – States and United States: 2020 and 2021

State	During December 2020							
	Under 600 lbs	600-699 lbs	700-799 lbs	800-899 lbs	900+ lbs ¹	900-999 lbs	1,000+ lbs	Total
	(1,000 head)	(1,000 head)	(1,000 head)	(1,000 head)	(1,000 head)	(1,000 head)	(1,000 head)	(1,000 head)
Colorado	35	40	35	25	20	(D)	(D)	155
Kansas	60	100	140	90	50	(D)	(D)	440
Nebraska	50	110	115	110	95	(D)	(D)	480
Texas	170	95	65	40	10	(D)	(D)	380
Other States ...	145	90	70	54	30	(D)	(D)	389
United States ..	460	435	425	319	(X)	110	95	1,844
State	During November 2021							
	Under 600 lbs	600-699 lbs	700-799 lbs	800-899 lbs	900+ lbs ¹	900-999 lbs	1,000+ lbs	Total
	(1,000 head)	(1,000 head)	(1,000 head)	(1,000 head)	(1,000 head)	(1,000 head)	(1,000 head)	(1,000 head)
Colorado	50	35	30	25	20	(D)	(D)	160
Kansas	70	110	125	85	45	(D)	(D)	435
Nebraska	95	120	95	85	95	(D)	(D)	490
Texas	180	120	85	45	15	(D)	(D)	445
Other States ...	170	100	70	56	45	(D)	(D)	441
United States ..	565	485	405	296	(X)	130	90	1,971
State	During December 2021							
	Under 600 lbs	600-699 lbs	700-799 lbs	800-899 lbs	900+ lbs ¹	900-999 lbs	1,000+ lbs	Total
	(1,000 head)	(1,000 head)	(1,000 head)	(1,000 head)	(1,000 head)	(1,000 head)	(1,000 head)	(1,000 head)
Colorado	40	40	35	30	20	(D)	(D)	165
Kansas	65	105	145	90	45	(D)	(D)	450
Nebraska	55	125	120	110	95	(D)	(D)	505
Texas	200	110	80	45	10	(D)	(D)	445
Other States ...	150	90	70	58	30	(D)	(D)	398
United States ..	510	470	450	333	(X)	105	95	1,963

(D) Withheld to avoid disclosing data for individual operations.

(X) Not applicable.

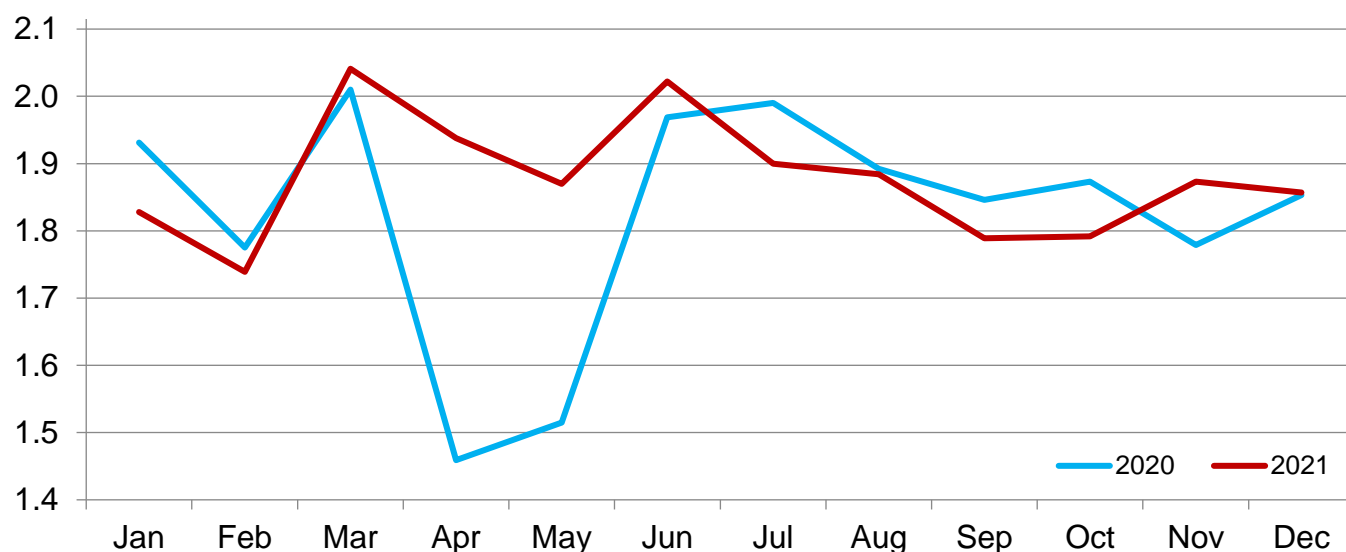
¹ The 900 pounds and greater weight group is the sum of 900-999 pounds and 1,000 pounds and greater weight groups.

Cattle Marketed on 1,000+ Capacity Feedlots by Month – States and United States: 2020 and 2021

State	During December 2020	During November 2021	During December 2021		
			Marketings	Percent of previous year	Percent of previous month
	(1,000 head)	(1,000 head)	(1,000 head)	(percent)	(percent)
Arizona	25	29	27	108	93
California	61	49	57	93	116
Colorado	170	165	170	100	103
Idaho	45	43	40	89	93
Iowa	91	92	94	103	102
Kansas	425	455	430	101	95
Minnesota	18	15	15	83	100
Nebraska	450	455	475	106	104
Oklahoma	42	43	34	81	79
South Dakota	43	56	45	105	80
Texas	395	400	395	100	99
Washington	44	26	29	66	112
Other States	44	45	46	105	102
United States	1,853	1,873	1,857	100	99

Cattle Marketed on 1,000+ Capacity Feedlots – United States

Million head



Cattle Other Disappearance on 1,000+ Capacity Feedlots by Month – States and United States: 2020 and 2021

State	During December 2020 (1,000 head)	During November 2021 (1,000 head)	During December 2021		
			Other disappearance (1,000 head)	Percent of previous year (percent)	Percent of previous month (percent)
Arizona	1	1	1	100	100
California	4	7	5	125	71
Colorado	5	5	5	100	100
Idaho	1	1	1	100	100
Iowa	2	2	3	150	150
Kansas	15	10	10	67	100
Minnesota	1	1	1	100	100
Nebraska	10	15	10	100	67
Oklahoma	1	1	2	200	200
South Dakota	2	1	3	150	300
Texas	15	15	10	67	67
Washington	1	1	1	100	100
Other States	2	1	2	100	200
United States	60	61	54	90	89

**Cattle on Feed by Class on 1,000+ Capacity Feedlots by Quarter – States and United States:
2021 and 2022**

State	Steers and steer calves			Heifers and heifer calves		
	Jan 1, 2021	Oct 1, 2021	Jan 1, 2022	Jan 1, 2021	Oct 1, 2021	Jan 1, 2022
	(1,000 Head)	(1,000 Head)	(1,000 Head)	(1,000 Head)	(1,000 Head)	(1,000 Head)
Arizona	257	265	267	5	5	5
California	470	460	470	85	80	85
Colorado	630	640	635	480	490	495
Idaho	150	165	160	135	140	150
Iowa	445	460	450	165	140	150
Kansas	1,340	1,380	1,340	1,160	1,150	1,150
Minnesota	95	75	85	20	15	15
Nebraska	1,590	1,400	1,590	960	980	1,010
Oklahoma	190	160	165	135	135	145
South Dakota	140	120	135	105	80	95
Texas	1,770	1,660	1,760	1,100	1,070	1,160
Washington	130	100	110	105	100	100
Other States	195	180	195	110	100	115
United States	7,402	7,065	7,362	4,565	4,485	4,675

Terms and Definitions of Cattle on Feed Estimates

Cattle on feed are steers and heifers being fed a ration of grain, silage, hay and/or protein supplement for slaughter market that are expected to produce a carcass that will grade select or better. It excludes cattle being "backgrounded only" for later sale as feeders or later placement in another feedlot.

Placements are steers and heifers put into a feedlot, fed a ration which will produce a carcass that will grade select or better, and are intended for the slaughter market.

Marketings are steers and heifers shipped out of feedlots to a slaughter market.

Other disappearance includes death loss, movement from feedlots to pasture, and shipments to other feedlots for further feeding.

Statistical Methodology

Survey Procedures: During January and July all known feedlots in the United States with capacity of 1,000 or more head are surveyed to provide data for cattle on feed estimates. During the other months, all known feedlots from 16 States are surveyed. The 16 States account for approximately 98 percent of the cattle on feed in feedlots with capacity of 1,000 or more head. Individual State estimates are published monthly for 12 of the 16 States. Data collected from the remaining 4 States are used to establish the "Other States" estimates. These 4 States include Illinois, New Mexico, Oregon, and Wyoming. The "Other States" category represents all cattle on feed with a capacity of 1,000 or more head for the rest of the United States.

Estimating Procedures: These cattle on feed estimates were prepared by the Agricultural Statistics Board after reviewing recommendations and analysis submitted by Regional Field Offices. Regional and State survey data were reviewed for reasonableness with each other and with estimates from the previous month when establishing the current estimates.

Revision Policy: Revisions to previous estimates are made to improve month to month relationships. Estimates for the previous month are subject to revision in all States each month when current estimates are made. In February, all monthly estimates for the previous year, and the number of feedlots and annual marketings from two years ago are reviewed and subject to revisions. The reviews are primarily based on slaughter data, state check-off or brand data, and any other data that may have been received after the original estimate was made. Estimates will also be reviewed after data from the *Census of Agriculture* are available. No revisions will be made after that date and estimates become final.

Reliability: Since all 1,000+ capacity cattle on feed operators in every State are not included in the monthly survey, survey estimates are subject to sampling variability. Survey results are also subject to non-sampling errors such as omissions, duplications, and mistakes in reporting, recording, and processing the data. The effects of these errors cannot be measured directly. They are minimized through rigid quality controls in the data collection process and through a careful review of all reported data for consistency and reasonableness.

To assist users in evaluating the reliability of estimates in this report, the "**Root Mean Square Error**" is shown for selected items in the table on the following page. The "Root Mean Square Error" is a statistical measure based on past performance and is computed using the differences between first and latest estimates. The "Root Mean Square Error" for cattle on feed inventory estimates over the past 24 months is 0.0 percent. This means that chances are 2 out of 3 that the final estimate will not be above or below the current estimate of 12.0 million head by more than 0.0 percent. Chances are 9 out of 10 that the difference will not exceed 0.0 percent.

The table on the following page shows a 24 month record of the range of differences between first and latest estimates for selected items. Using estimates of number on feed as an example, changes between the first estimate and the latest estimate during the past 24 months have averaged 0 head, ranging from 0 to 5,000 head. During this period the initial estimate has been above the latest estimate 0 times and has been below the latest estimate 2 times. This does not imply that the initial estimate is likely to understate or overstate final inventory.

Reliability of Monthly Cattle on Feed Estimates

[Based on data for the past 24 months]

Item	Root mean square error	90 percent confidence level	Difference between first and latest estimate				
			Average	Smallest	Largest	Months	
						Below latest	Above latest
	(percent)	(percent)	(1,000)	(1,000)	(1,000)	(number)	(number)
On feed	0.0	0.0	0	0	5	2	0
Placements	0.2	0.3	2	0	15	7	2
Marketings	0.2	0.4	2	0	15	5	2

Information Contacts

Listed below are the commodity specialists in the Livestock Branch of the National Agricultural Statistics Service to contact for additional information. E-mail inquiries may be sent to nass@usda.gov.

Travis Averill, Chief, Livestock Branch	(202) 692-0069
Scott Hollis, Head, Livestock Section	(202) 690-2424
Sherry Bertramsen – Livestock Slaughter	(202) 690-8632
Ryan Cowen – Cattle, Cattle on Feed	(202) 720-3040
Anthony Fischer – Hogs and Pigs	(202) 720-3106
Logan Hartley-Sanguinett – Sheep and Goats	(202) 690-3236
Mike Miller – Milk Production and Milk Cows	(202) 720-3278
Suzanne Richards – Dairy Products	(202) 720-4448

Access to NASS Reports

For your convenience, you may access NASS reports and products the following ways:

- All reports are available electronically, at no cost, on the NASS web site: www.nass.usda.gov
- Both national and state specific reports are available via a free e-mail subscription. To set-up this free subscription, visit www.nass.usda.gov and click on “National” or “State” in upper right corner above “search” box to create an account and select the reports you would like to receive.
- Cornell’s Mann Library has launched a new website housing NASS’s and other agency’s archived reports. The new website, <https://usda.library.cornell.edu>. All email subscriptions containing reports will be sent from the new website, <https://usda.library.cornell.edu>. To continue receiving the reports via e-mail, you will have to go to the new website, create a new account and re-subscribe to the reports. If you need instructions to set up an account or subscribe, they are located at: <https://usda.library.cornell.edu/help>. You should whitelist notifications@usda-esmis.library.cornell.edu in your email client to avoid the emails going into spam/junk folders.

For more information on NASS surveys and reports, call the NASS Agricultural Statistics Hotline at (800) 727-9540, 7:30 a.m. to 4:00 p.m. ET, or e-mail: nass@usda.gov.

The U.S. Department of Agriculture (USDA) prohibits discrimination against its customers, employees, and applicants for employment on the basis of race, color, national origin, age, disability, sex, gender identity, religion, reprisal, and where applicable, political beliefs, marital status, familial or parental status, sexual orientation, or all or part of an individual's income is derived from any public assistance program, or protected genetic information in employment or in any program or activity conducted or funded by the Department. (Not all prohibited bases will apply to all programs and/or employment activities.)

If you wish to file a Civil Rights program complaint of discrimination, complete the [USDA Program Discrimination Complaint Form](#) (PDF), found online at www.ascr.usda.gov/filing-program-discrimination-complaint-usda-customer, or at any USDA office, or call (866) 632-9992 to request the form. You may also write a letter containing all of the information requested in the form. Send your completed complaint form or letter to us by mail at U.S. Department of Agriculture, Director, Office of Adjudication, 1400 Independence Avenue, S.W., Washington, D.C. 20250-9410, by fax (202) 690-7442 or email at program.intake@usda.gov.



United States Department of Agriculture

Registration is Now Open

USDA's 98th Annual
**Agricultural
Outlook Forum**
February 24-25, 2022



Register Today

<https://www.usda.gov/oce/ag-outlook-forum>