



ISSN: 1948-9080

Released June 24, 2022, by the National Agricultural Statistics Service (NASS), Agricultural Statistics Board, United States Department of Agriculture (USDA).

United States Cattle on Feed Up 1 Percent

Cattle and calves on feed for the slaughter market in the United States for feedlots with capacity of 1,000 or more head totaled 11.8 million head on June 1, 2022. The inventory was 1 percent above June 1, 2021. This is the highest June 1 inventory since the series began in 1996.

Placements in feedlots during May totaled 1.87 million head, 2 percent below 2021. Net placements were 1.79 million head. During May, placements of cattle and calves weighing less than 600 pounds were 370,000 head, 600-699 pounds were 270,000 head, 700-799 pounds were 465,000 head, 800-899 pounds were 469,000 head, 900-999 pounds were 220,000 head, and 1,000 pounds and greater were 75,000 head.

Marketings of fed cattle during May totaled 1.91 million head, 2 percent above 2021.

Other disappearance totaled 76,000 head during May, 13 percent above 2021.

Cattle on Feed Inventory, Placements, Marketings, and Other Disappearance on 1,000+ Capacity Feedlots – United States: June 1, 2021 and 2022

Item	2021	2022	Percent of previous year
	(1,000 head)	(1,000 head)	(percent)
On feed May 1	11,731	11,967	102
Placed on feed during May	1,910	1,869	98
Fed cattle marketed during May	1,870	1,914	102
Other disappearance during May	67	76	113
On feed June 1	11,704	11,846	101

Cattle on Feed Inventory, Placements, Marketings, and Other Disappearance on 1,000+ Capacity Feedlots – United States: May 1, 2021 and 2022

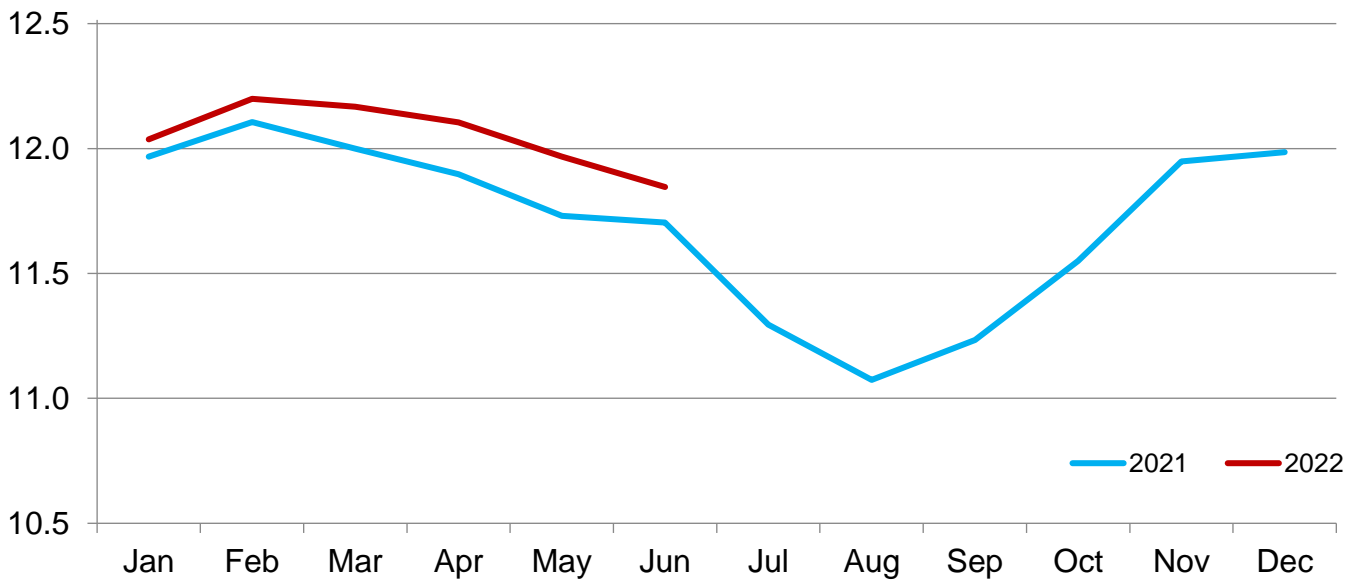
Item	2021	2022	Percent of previous year
	(1,000 head)	(1,000 head)	(percent)
On feed April 1	11,897	12,105	102
Placed on feed during April	1,825	1,809	99
Fed cattle marketed during April	1,936	1,893	98
Other disappearance during April	55	54	98
On feed May 1	11,731	11,967	102

Cattle on Feed Inventory on 1,000+ Capacity Feedlots by Month – States and United States: 2021 and 2022

State	June 1, 2021	May 1, 2022	June 1, 2022		
			Inventory	Percent of previous year	Percent of previous month
	(1,000 head)	(1,000 head)	(1,000 head)	(percent)	(percent)
Arizona	279	287	286	103	100
California	545	570	570	105	100
Colorado	1,080	1,090	1,090	101	100
Idaho	290	300	295	102	98
Iowa	620	590	590	95	100
Kansas	2,520	2,480	2,490	99	100
Minnesota	105	100	100	95	100
Nebraska	2,440	2,650	2,530	104	95
Oklahoma	275	275	275	100	100
South Dakota	220	220	195	89	89
Texas	2,850	2,900	2,940	103	101
Washington	205	210	205	100	98
Other States	275	295	280	102	95
United States	11,704	11,967	11,846	101	99

Cattle on Feed Inventory on 1,000+ Capacity Feedlots – United States

Million head

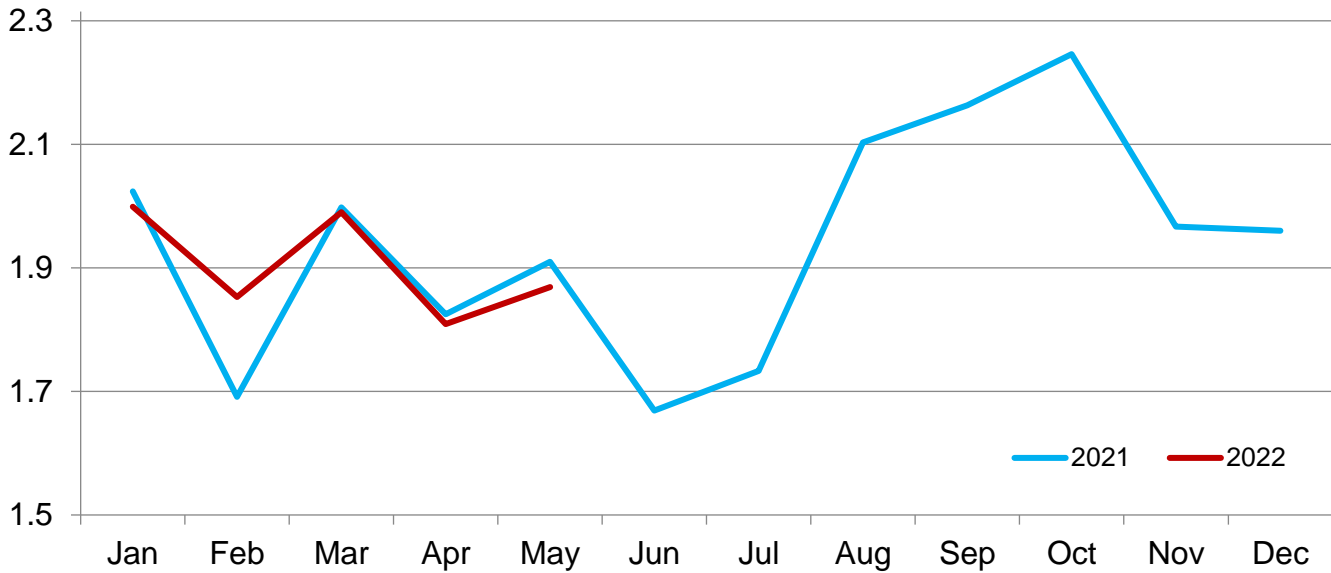


Cattle Placed on Feed on 1,000+ Capacity Feedlots by Month – States and United States: 2021 and 2022

State	During May 2021 (1,000 head)	During April 2022 (1,000 head)	During May 2022		
			Placements (1,000 head)	Percent of previous year (percent)	Percent of previous month (percent)
Arizona	25	29	28	112	97
California	70	74	64	91	86
Colorado	190	165	165	87	100
Idaho	31	35	35	113	100
Iowa	67	85	74	110	87
Kansas	505	430	480	95	112
Minnesota	10	14	11	110	79
Nebraska	390	440	395	101	90
Oklahoma	57	42	54	95	129
South Dakota	31	27	28	90	104
Texas	470	395	465	99	118
Washington	27	35	31	115	89
Other States	37	38	39	105	103
United States	1,910	1,809	1,869	98	103

Cattle Placed on 1,000+ Capacity Feedlots – United States

Million head



Cattle Placed on Feed by Weight Group on 1,000+ Capacity Feedlots and Month – States and United States: 2021 and 2022

State	During May 2021							
	Under 600 lbs	600-699 lbs	700-799 lbs	800-899 lbs	900+ lbs ¹	900-999 lbs	1,000+ lbs	Total
	(1,000 head)	(1,000 head)	(1,000 head)	(1,000 head)	(1,000 head)	(1,000 head)	(1,000 head)	(1,000 head)
Colorado	30	25	45	50	40	(D)	(D)	190
Kansas	55	70	150	145	85	(D)	(D)	505
Nebraska	30	30	85	130	115	(D)	(D)	390
Texas	135	85	120	90	40	(D)	(D)	470
Other States ...	105	45	70	85	50	(D)	(D)	355
United States ..	355	255	470	500	(X)	235	95	1,910

State	During April 2022							
	Under 600 lbs	600-699 lbs	700-799 lbs	800-899 lbs	900+ lbs ¹	900-999 lbs	1,000+ lbs	Total
	(1,000 head)	(1,000 head)	(1,000 head)	(1,000 head)	(1,000 head)	(1,000 head)	(1,000 head)	(1,000 head)
Colorado	30	30	35	40	30	(D)	(D)	165
Kansas	45	60	125	135	65	(D)	(D)	430
Nebraska	30	50	95	155	110	(D)	(D)	440
Texas	140	80	85	65	25	(D)	(D)	395
Other States ...	110	50	75	94	50	(D)	(D)	379
United States ..	355	270	415	489	(X)	210	70	1,809

State	During May 2022							
	Under 600 lbs	600-699 lbs	700-799 lbs	800-899 lbs	900+ lbs ¹	900-999 lbs	1,000+ lbs	Total
	(1,000 head)	(1,000 head)	(1,000 head)	(1,000 head)	(1,000 head)	(1,000 head)	(1,000 head)	(1,000 head)
Colorado	30	25	40	40	30	(D)	(D)	165
Kansas	55	70	150	130	75	(D)	(D)	480
Nebraska	30	35	90	130	110	(D)	(D)	395
Texas	145	90	115	85	30	(D)	(D)	465
Other States ...	110	50	70	84	50	(D)	(D)	364
United States ..	370	270	465	469	(X)	220	75	1,869

(D) Withheld to avoid disclosing data for individual operations.

(X) Not applicable.

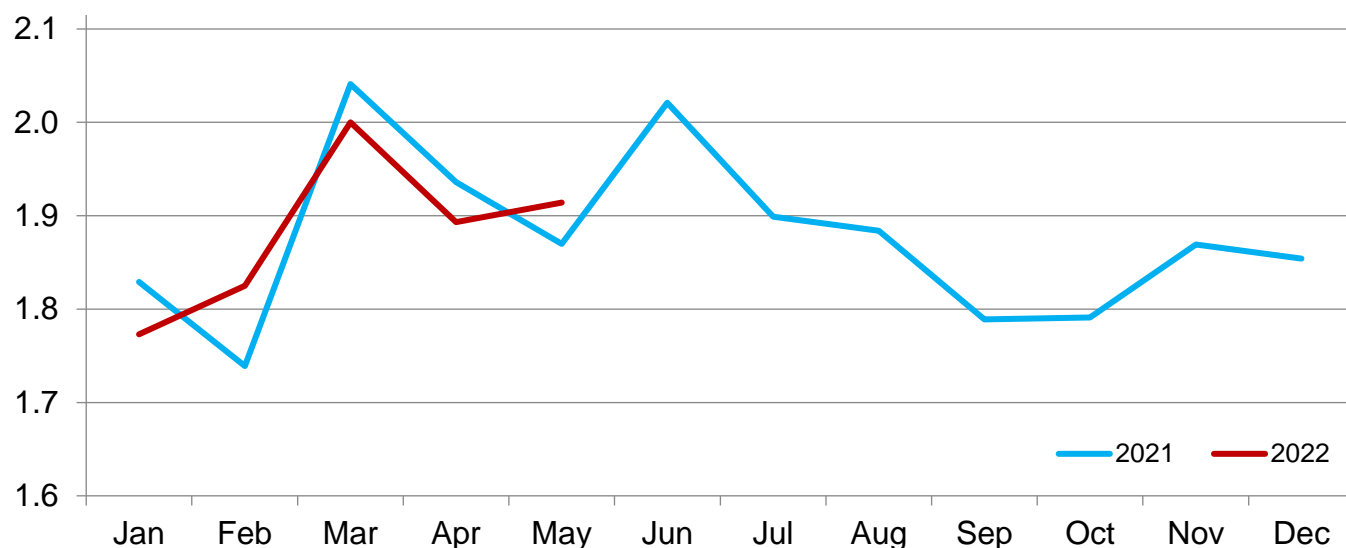
¹ The 900 pounds and greater weight group is the sum of 900-999 pounds and 1,000 pounds and greater weight groups.

Cattle Marketed on 1,000+ Capacity Feedlots by Month – States and United States: 2021 and 2022

State	During May 2021	During April 2022	During May 2022		
			Marketings	Percent of previous year	Percent of previous month
	(1,000 head)	(1,000 head)	(1,000 head)	(percent)	(percent)
Arizona	21	26	28	133	108
California	63	63	57	90	90
Colorado	140	170	155	111	91
Idaho	35	38	38	109	100
Iowa	74	93	71	96	76
Kansas	445	450	460	103	102
Minnesota	14	13	10	71	77
Nebraska	465	440	495	106	113
Oklahoma	56	56	53	95	95
South Dakota	42	35	47	112	134
Texas	430	435	415	97	95
Washington	26	29	34	131	117
Other States	59	45	51	86	113
United States	1,870	1,893	1,914	102	101

Cattle Marketed on 1,000+ Capacity Feedlots – United States

Million head



Cattle Other Disappearance on 1,000+ Capacity Feedlots by Month – States and United States: 2021 and 2022

State	During May 2021 (1,000 head)	During April 2022 (1,000 head)	During May 2022		
			Other disappearance (1,000 head)	Percent of previous year (percent)	Percent of previous month (percent)
Arizona	1	1	1	100	100
California	7	6	7	100	117
Colorado	10	5	10	100	200
Idaho	1	2	2	200	100
Iowa	3	2	3	100	150
Kansas	10	10	10	100	100
Minnesota	1	1	1	100	100
Nebraska	15	10	20	133	200
Oklahoma	1	1	1	100	100
South Dakota	4	2	6	150	300
Texas	10	10	10	100	100
Washington	1	1	2	200	200
Other States	3	3	3	100	100
United States	67	54	76	113	141

Terms and Definitions of Cattle on Feed Estimates

Cattle on feed are steers and heifers being fed a ration of grain, silage, hay and/or protein supplement for slaughter market that are expected to produce a carcass that will grade select or better. It excludes cattle being "backgrounded only" for later sale as feeders or later placement in another feedlot.

Placements are steers and heifers put into a feedlot, fed a ration which will produce a carcass that will grade select or better, and are intended for the slaughter market.

Marketings are steers and heifers shipped out of feedlots to a slaughter market.

Other disappearance includes death loss, movement from feedlots to pasture, and shipments to other feedlots for further feeding.

Statistical Methodology

Survey Procedures: During January and July all known feedlots in the United States with capacity of 1,000 or more head are surveyed to provide data for cattle on feed estimates. During the other months, all known feedlots from 16 States are surveyed. The 16 States account for approximately 98 percent of the cattle on feed in feedlots with capacity of 1,000 or more head. Individual State estimates are published monthly for 12 of the 16 States. Data collected from the remaining 4 States are used to establish the "Other States" estimates. These 4 States include Illinois, New Mexico, Oregon, and Wyoming. The "Other States" category represents all cattle on feed with a capacity of 1,000 or more head for the rest of the United States.

Estimating Procedures: These cattle on feed estimates were prepared by the Agricultural Statistics Board after reviewing recommendations and analysis submitted by Regional Field Offices. Regional and State survey data were reviewed for reasonableness with each other and with estimates from the previous month when establishing the current estimates.

Revision Policy: Revisions to previous estimates are made to improve month to month relationships. Estimates for the previous month are subject to revision in all States each month when current estimates are made. In February, all monthly estimates for the previous year, and the number of feedlots and annual marketings from two years ago are reviewed and subject to revisions. The reviews are primarily based on slaughter data, state check-off or brand data, and any other data that may have been received after the original estimate was made. Estimates will also be reviewed after data from the *Census of Agriculture* are available. No revisions will be made after that date and estimates become final.

Reliability: Since all 1,000+ capacity cattle on feed operators in every State are not included in the monthly survey, survey estimates are subject to sampling variability. Survey results are also subject to non-sampling errors such as omissions, duplications, and mistakes in reporting, recording, and processing the data. The effects of these errors cannot be measured directly. They are minimized through rigid quality controls in the data collection process and through a careful review of all reported data for consistency and reasonableness.

To assist users in evaluating the reliability of estimates in this report, the "**Root Mean Square Error**" is shown for selected items in the table on the following page. The "Root Mean Square Error" is a statistical measure based on past performance and is computed using the differences between first and latest estimates. The "Root Mean Square Error" for cattle on feed inventory estimates over the past 24 months is 0.0 percent. This means that chances are 2 out of 3 that the final estimate will not be above or below the current estimate of 11.8 million head by more than 0.0 percent. Chances are 9 out of 10 that the difference will not exceed 0.0 percent.

The table on the following page shows a 24-month record of the range of differences between first and latest estimates for selected items. Using estimates of number on feed as an example, changes between the first estimate and the latest estimate during the past 24 months have averaged 1,000 head, ranging from 0 to 6,000 head. During this period the initial estimate has been above the latest estimate 0 times and has been below the latest estimate 5 times. This does not imply that the initial estimate is likely to understate or overstate final inventory.

Reliability of Monthly Cattle on Feed Estimates

[Based on data for the past 24 months]

Item	Root mean square error	90 percent confidence level	Difference between first and latest estimate				
			Average	Smallest	Largest	Months	
						Below latest	Above latest
	(percent)	(percent)	(1,000)	(1,000)	(1,000)	(number)	(number)
On feed	0.0	0.0	1	0	6	5	0
Placements	0.2	0.4	3	0	15	8	7
Marketings	0.2	0.4	2	0	15	5	7

Information Contacts

Listed below are the commodity specialists in the Livestock Branch of the National Agricultural Statistics Service to contact for additional information. E-mail inquiries may be sent to nass@usda.gov.

Travis Averill, Chief, Livestock Branch	(202) 692-0069
Scott Hollis, Head, Livestock Section	(202) 690-2424
Sherry Bertramsen – Livestock Slaughter	(202) 690-8632
Ryan Cowen – Cattle, Cattle on Feed	(202) 720-3040
Anthony Fischer – Hogs and Pigs	(202) 720-3106
Logan Hartley-Sanguinett – Sheep and Goats	(202) 690-3236
Mike Miller – Milk Production and Milk Cows	(202) 720-3278
Suzanne Richards – Dairy Products	(202) 720-4448

Access to NASS Reports

For your convenience, you may access NASS reports and products the following ways:

- All reports are available electronically, at no cost, on the NASS web site: www.nass.usda.gov.
- Both national and state specific reports are available via a free e-mail subscription. To set-up this free subscription, visit www.nass.usda.gov and click on “National” or “State” in upper right corner above “search” box to create an account and select the reports you would like to receive.
- Cornell’s Mann Library has launched a new website housing NASS’s and other agency’s archived reports. The new website, <https://usda.library.cornell.edu>. All email subscriptions containing reports will be sent from the new website, <https://usda.library.cornell.edu>. To continue receiving the reports via e-mail, you will have to go to the new website, create a new account and re-subscribe to the reports. If you need instructions to set up an account or subscribe, they are located at: <https://usda.library.cornell.edu/help>. You should whitelist notifications@usda-esmis.library.cornell.edu in your email client to avoid the emails going into spam/junk folders.

For more information on NASS surveys and reports, call the NASS Agricultural Statistics Hotline at (800) 727-9540, 7:30 a.m. to 4:00 p.m. ET, or e-mail: nass@usda.gov.

The U.S. Department of Agriculture (USDA) prohibits discrimination against its customers, employees, and applicants for employment on the basis of race, color, national origin, age, disability, sex, gender identity, religion, reprisal, and where applicable, political beliefs, marital status, familial or parental status, sexual orientation, or all or part of an individual's income is derived from any public assistance program, or protected genetic information in employment or in any program or activity conducted or funded by the Department. (Not all prohibited bases will apply to all programs and/or employment activities.)

If you wish to file a Civil Rights program complaint of discrimination, complete the [USDA Program Discrimination Complaint Form](#) (PDF), found online at www.ascr.usda.gov/filing-program-discrimination-complaint-usda-customer, or at any USDA office, or call (866) 632-9992 to request the form. You may also write a letter containing all of the information requested in the form. Send your completed complaint form or letter to us by mail at U.S. Department of Agriculture, Director, Office of Adjudication, 1400 Independence Avenue, S.W., Washington, D.C. 20250-9410, by fax (202) 690-7442 or email at program.intake@usda.gov.