



# Cattle on Feed

ISSN: 1948-9080

---

Released July 22, 2022, by the National Agricultural Statistics Service (NASS), Agricultural Statistics Board, United States Department of Agriculture (USDA).

## United States Cattle on Feed Up Slightly

**Cattle and calves on feed** for the slaughter market in the United States for feedlots with capacity of 1,000 or more head totaled 11.3 million head on July 1, 2022. The inventory was slightly above July 1, 2021. The inventory included 6.90 million steers and steer calves, down 1 percent from the previous year. This group accounted for 61 percent of the total inventory. Heifers and heifer calves accounted for 4.45 million head, up 3 percent from 2021.

**Placements** in feedlots during June totaled 1.63 million head, 2 percent below 2021. Net placements were 1.56 million head. During June, placements of cattle and calves weighing less than 600 pounds were 360,000 head, 600-699 pounds were 270,000 head, 700-799 pounds were 370,000 head, 800-899 pounds were 369,000 head, 900-999 pounds were 175,000 head, and 1,000 pounds and greater were 85,000 head.

**Marketings** of fed cattle during June totaled 2.06 million head, 2 percent above 2021.

**Other disappearance** totaled 69,000 head during June, 21 percent above 2021.

**Cattle on Feed Inventory, Placements, Marketings, and Other Disappearance on 1,000+ Capacity Feedlots – United States: July 1, 2021 and 2022**

Item	2021	2022	Percent of previous year	
	(1,000 head)	(1,000 head)	(percent)	
On feed June 1 .....	11,704	11,841	101	
Placed on feed during June .....	1,669	1,629	98	
Fed cattle marketed during June .....	2,021	2,061	102	
Other disappearance during June .....	57	69	121	
On feed July 1 .....	11,295	11,340	100	

**Cattle on Feed Inventory, Placements, Marketings, and Other Disappearance on 1,000+ Capacity Feedlots – United States: June 1, 2021 and 2022**

Item	2021	2022	Percent of previous year	
	(1,000 head)	(1,000 head)	(percent)	
On feed May 1 .....	11,731	11,967	102	
Placed on feed during May .....	1,910	1,864	98	
Fed cattle marketed during May .....	1,870	1,914	102	
Other disappearance during May .....	67	76	113	
On feed June 1 .....	11,704	11,841	101	

**Cattle on Feed by Class on 1,000+ Capacity Feedlots – United States: July 1, 2021 and 2022**

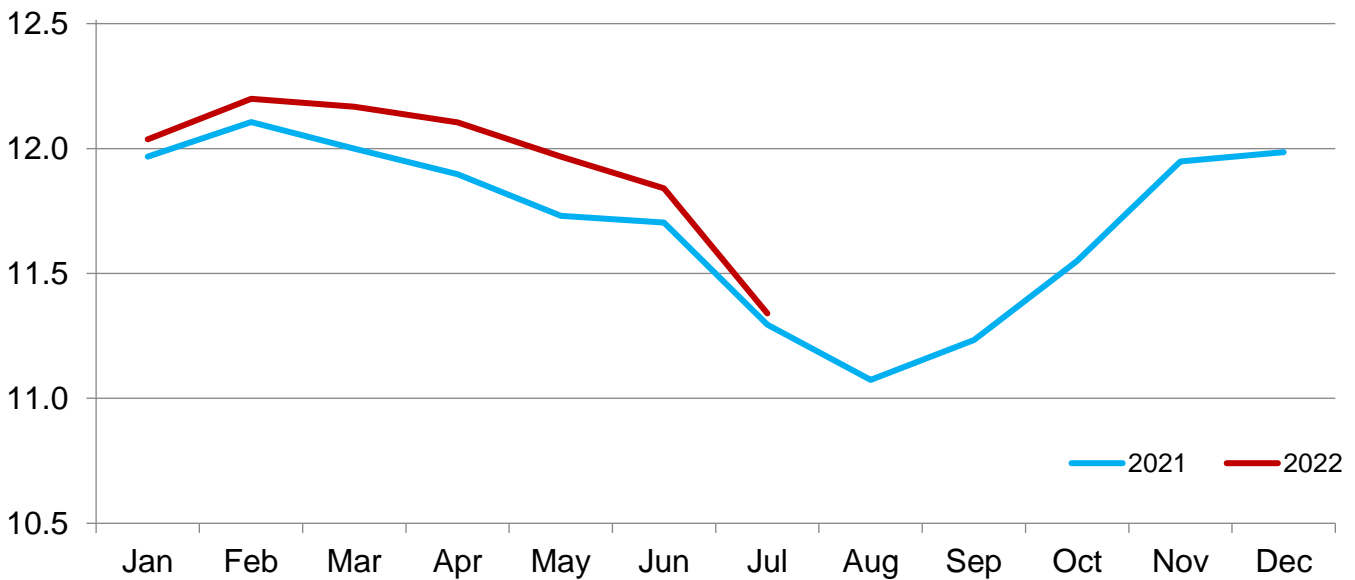
Item	2021	2022	Percent of	
			previous year	inventory
			(percent)	(percent)
Class on feed July 1 .....	(1,000 head)	(1,000 head)	(percent)	(percent)
Steers and steer calves .....	6,975	6,895	99	61
Heifers and heifer calves .....	4,320	4,445	103	39

**Cattle on Feed Inventory on 1,000+ Capacity Feedlots by Month – States and United States: 2021 and 2022**

State	July 1, 2021	June 1, 2022	July 1, 2022		
			Inventory	Percent of previous year	Percent of previous month
	(1,000 head)	(1,000 head)	(1,000 head)	(percent)	(percent)
Arizona .....	275	286	280	102	98
California .....	540	570	560	104	98
Colorado .....	1,060	1,090	1,060	100	97
Idaho .....	280	290	280	100	97
Iowa .....	600	590	580	97	98
Kansas .....	2,450	2,490	2,350	96	94
Minnesota .....	100	100	90	90	90
Nebraska .....	2,290	2,530	2,370	103	94
Oklahoma .....	275	275	270	98	98
South Dakota .....	200	195	170	85	87
Texas .....	2,770	2,940	2,860	103	97
Washington .....	195	205	200	103	98
Other States .....	260	280	270	104	96
United States .....	11,295	11,841	11,340	100	96

**Cattle on Feed Inventory on 1,000+ Capacity Feedlots – United States**

Million head

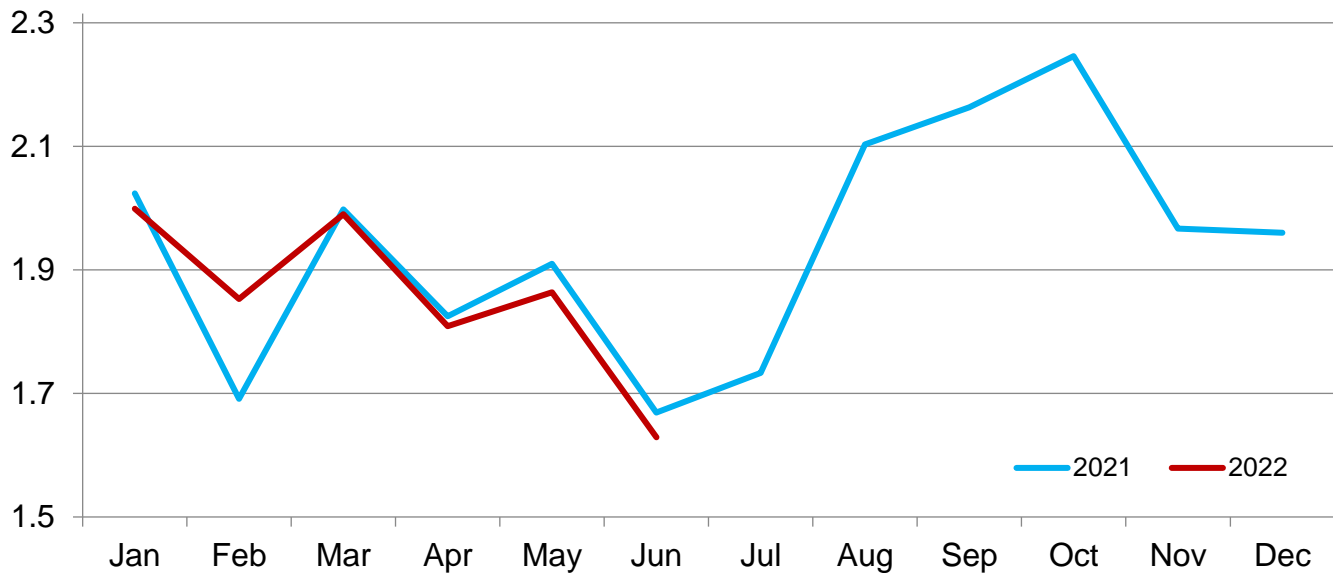


**Cattle Placed on Feed on 1,000+ Capacity Feedlots by Month – States and United States: 2021 and 2022**

State	During June 2021	During May 2022	During June 2022		
			Placements	Percent of previous year	Percent of previous month
	(1,000 head)	(1,000 head)	(1,000 head)	(percent)	(percent)
Arizona .....	22	28	21	95	75
California .....	61	64	59	97	92
Colorado .....	130	165	140	108	85
Idaho .....	36	35	29	81	83
Iowa .....	44	74	60	136	81
Kansas .....	430	480	380	88	79
Minnesota .....	12	11	10	83	91
Nebraska .....	415	395	405	98	103
Oklahoma .....	54	54	41	76	76
South Dakota .....	20	28	22	110	79
Texas .....	380	460	390	103	85
Washington .....	24	31	28	117	90
Other States .....	41	39	44	107	113
United States .....	1,669	1,864	1,629	98	87

**Cattle Placed on 1,000+ Capacity Feedlots – United States**

Million head



**Cattle Placed on Feed by Weight Group on 1,000+ Capacity Feedlots and Month – States and United States: 2021 and 2022**

State	During June 2021							
	Under 600 lbs (1,000 head)	600-699 lbs (1,000 head)	700-799 lbs (1,000 head)	800-899 lbs (1,000 head)	900+ lbs <sup>1</sup> (1,000 head)	900-999 lbs (1,000 head)	1,000+ lbs (1,000 head)	Total (1,000 head)
Colorado .....	30	25	25	30	20	(D)	(D)	130
Kansas .....	55	70	125	115	65	(D)	(D)	430
Nebraska .....	30	50	85	130	120	(D)	(D)	415
Texas .....	145	70	85	55	25	(D)	(D)	380
Other States ...	85	45	55	74	55	(D)	(D)	314
United States ..	345	260	375	404	(X)	195	90	1,669
State	During May 2022							
	Under 600 lbs (1,000 head)	600-699 lbs (1,000 head)	700-799 lbs (1,000 head)	800-899 lbs (1,000 head)	900+ lbs <sup>1</sup> (1,000 head)	900-999 lbs (1,000 head)	1,000+ lbs (1,000 head)	Total (1,000 head)
Colorado .....	30	25	40	40	30	(D)	(D)	165
Kansas .....	55	70	150	130	75	(D)	(D)	480
Nebraska .....	30	35	90	130	110	(D)	(D)	395
Texas .....	140	90	115	85	30	(D)	(D)	460
Other States ...	110	50	70	84	50	(D)	(D)	364
United States ..	365	270	465	469	(X)	220	75	1,864
State	During June 2022							
	Under 600 lbs (1,000 head)	600-699 lbs (1,000 head)	700-799 lbs (1,000 head)	800-899 lbs (1,000 head)	900+ lbs <sup>1</sup> (1,000 head)	900-999 lbs (1,000 head)	1,000+ lbs (1,000 head)	Total (1,000 head)
Colorado .....	30	25	30	30	25	(D)	(D)	140
Kansas .....	55	70	120	90	45	(D)	(D)	380
Nebraska .....	30	50	85	125	115	(D)	(D)	405
Texas .....	160	80	80	50	20	(D)	(D)	390
Other States ...	85	45	55	74	55	(D)	(D)	314
United States ..	360	270	370	369	(X)	175	85	1,629

(D) Withheld to avoid disclosing data for individual operations.

(X) Not applicable.

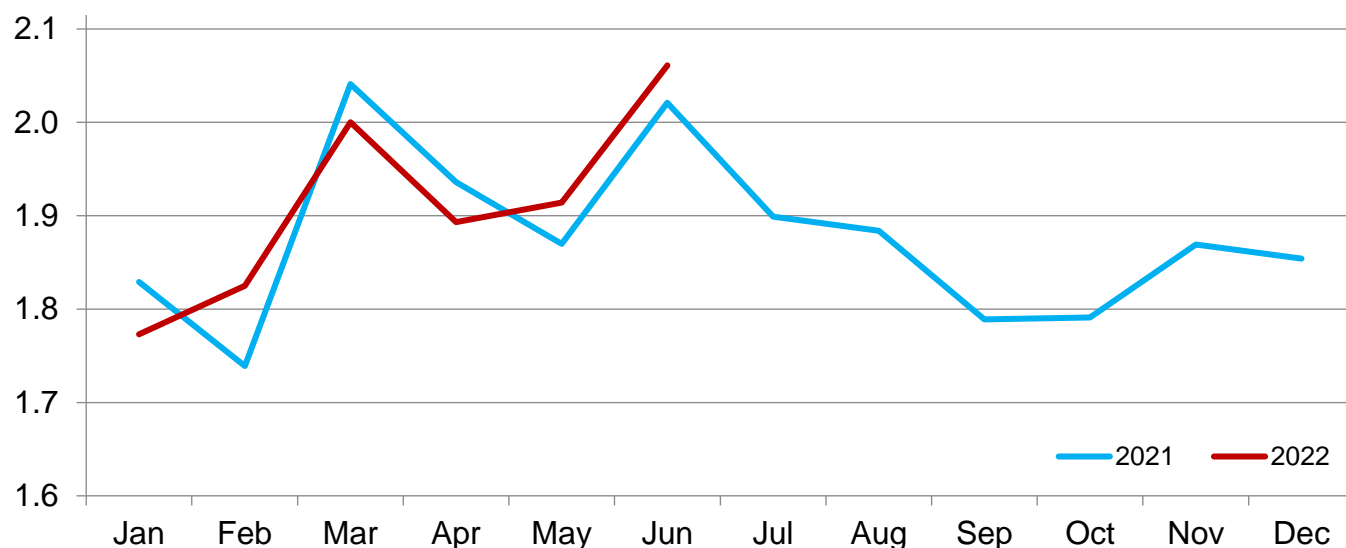
<sup>1</sup> The 900 pounds and greater weight group is the sum of 900-999 pounds and 1,000 pounds and greater weight groups.

**Cattle Marketed on 1,000+ Capacity Feedlots by Month – States and United States: 2021 and 2022**

State	During June 2021 (1,000 head)	During May 2022 (1,000 head)	During June 2022		
			Marketings (1,000 head)	Percent of previous year (percent)	Percent of previous month (percent)
Arizona .....	25	28	26	104	93
California .....	59	57	63	107	111
Colorado .....	145	155	165	114	106
Idaho .....	44	43	38	86	88
Iowa .....	62	71	68	110	96
Kansas .....	490	460	505	103	110
Minnesota .....	16	10	19	119	190
Nebraska .....	555	495	545	98	110
Oklahoma .....	53	53	45	85	85
South Dakota .....	36	47	43	119	91
Texas .....	450	410	460	102	112
Washington .....	32	34	32	100	94
Other States .....	54	51	52	96	102
United States .....	2,021	1,914	2,061	102	108

## Cattle Marketed on 1,000+ Capacity Feedlots – United States

Million head



### Cattle Other Disappearance on 1,000+ Capacity Feedlots by Month – States and United States: 2021 and 2022

State	During June 2021 (1,000 head)	During May 2022 (1,000 head)	During June 2022		
			Other disappearance (1,000 head)	Percent of previous year (percent)	Percent of previous month (percent)
Arizona .....	1	1	1	100	100
California .....	7	7	6	86	86
Colorado .....	5	10	5	100	50
Idaho .....	2	2	1	50	50
Iowa .....	2	3	2	100	67
Kansas .....	10	10	15	150	150
Minnesota .....	1	1	1	100	100
Nebraska .....	10	20	20	200	100
Oklahoma .....	1	1	1	100	100
South Dakota .....	4	6	4	100	67
Texas .....	10	10	10	100	100
Washington .....	2	2	1	50	50
Other States .....	2	3	2	100	67
United States .....	57	76	69	121	91

**Cattle on Feed by Class on 1,000+ Capacity Feedlots by Quarter – States and United States:  
2021 and 2022**

State	Steers and steer calves			Heifers and heifer calves		
	Jul 1, 2021	Apr 1, 2022	Jul 1, 2022	Jul 1, 2021	Apr 1, 2022	Jul 1, 2022
	(1,000 Head)	(1,000 Head)	(1,000 Head)	(1,000 Head)	(1,000 Head)	(1,000 Head)
Arizona .....	270	280	275	5	5	5
California .....	455	470	465	85	95	95
Colorado .....	595	655	570	465	445	490
Idaho .....	155	170	150	125	135	130
Iowa .....	470	450	445	130	150	135
Kansas .....	1,300	1,370	1,230	1,150	1,140	1,120
Minnesota .....	85	85	75	15	15	15
Nebraska .....	1,440	1,680	1,480	850	980	890
Oklahoma .....	155	160	145	120	130	125
South Dakota .....	125	145	105	75	85	65
Texas .....	1,650	1,770	1,680	1,120	1,180	1,180
Washington .....	105	110	100	90	95	100
Other States .....	170	195	175	90	110	95
United States .....	6,975	7,540	6,895	4,320	4,565	4,445

## Terms and Definitions of Cattle on Feed Estimates

**Cattle on feed** are steers and heifers being fed a ration of grain, silage, hay and/or protein supplement for slaughter market that are expected to produce a carcass that will grade select or better. It excludes cattle being "backgrounded only" for later sale as feeders or later placement in another feedlot.

**Placements** are steers and heifers put into a feedlot, fed a ration which will produce a carcass that will grade select or better, and are intended for the slaughter market.

**Marketings** are steers and heifers shipped out of feedlots to a slaughter market.

**Other disappearance** includes death loss, movement from feedlots to pasture, and shipments to other feedlots for further feeding.

## Statistical Methodology

**Survey Procedures:** During January and July all known feedlots in the United States with capacity of 1,000 or more head are surveyed to provide data for cattle on feed estimates. During the other months, all known feedlots from 16 States are surveyed. The 16 States account for approximately 98 percent of the cattle on feed in feedlots with capacity of 1,000 or more head. Individual State estimates are published monthly for 12 of the 16 States. Data collected from the remaining 4 States are used to establish the "Other States" estimates. These 4 States include Illinois, New Mexico, Oregon, and Wyoming. The "Other States" category represents all cattle on feed with a capacity of 1,000 or more head for the rest of the United States.

**Estimating Procedures:** These cattle on feed estimates were prepared by the Agricultural Statistics Board after reviewing recommendations and analysis submitted by Regional Field Offices. Regional and State survey data were reviewed for reasonableness with each other and with estimates from the previous month when establishing the current estimates.

**Revision Policy:** Revisions to previous estimates are made to improve month to month relationships. Estimates for the previous month are subject to revision in all States each month when current estimates are made. In February, all monthly estimates for the previous year, and the number of feedlots and annual marketings from two years ago are reviewed and subject to revisions. The reviews are primarily based on slaughter data, state check-off or brand data, and any other data that may have been received after the original estimate was made. Estimates will also be reviewed after data from the *Census of Agriculture* are available. No revisions will be made after that date and estimates become final.

**Reliability:** Since all 1,000+ capacity cattle on feed operators in every State are not included in the monthly survey, survey estimates are subject to sampling variability. Survey results are also subject to non-sampling errors such as omissions, duplications, and mistakes in reporting, recording, and processing the data. The effects of these errors cannot be measured directly. They are minimized through rigid quality controls in the data collection process and through a careful review of all reported data for consistency and reasonableness.

To assist users in evaluating the reliability of estimates in this report, the "**Root Mean Square Error**" is shown for selected items in the table on the following page. The "Root Mean Square Error" is a statistical measure based on past performance and is computed using the differences between first and latest estimates. The "Root Mean Square Error" for cattle on feed inventory estimates over the past 24 months is 0.0 percent. This means that chances are 2 out of 3 that the final estimate will not be above or below the current estimate of 11.3 million head by more than 0.0 percent. Chances are 9 out of 10 that the difference will not exceed 0.0 percent.

The table on the following page shows a 24-month record of the range of differences between first and latest estimates for selected items. Using estimates of number on feed as an example, changes between the first estimate and the latest estimate during the past 24 months have averaged 1,000 head, ranging from 0 to 6,000 head. During this period the initial estimate has been above the latest estimate 1 time and has been below the latest estimate 5 times. This does not imply that the initial estimate is likely to understate or overstate final inventory.



## Reliability of Monthly Cattle on Feed Estimates

[Based on data for the past 24 months]

Item	Root mean square error	90 percent confidence level	Difference between first and latest estimate				
			Average	Smallest	Largest	Months	
						Below latest	Above latest
	(percent)	(percent)	(1,000)	(1,000)	(1,000)	(number)	(number)
On feed .....	0.0	0.0	1	0	6	5	1
Placements .....	0.2	0.3	2	0	7	7	8
Marketings .....	0.1	0.2	1	0	7	4	7

## Information Contacts

Listed below are the commodity specialists in the Livestock Branch of the National Agricultural Statistics Service to contact for additional information. E-mail inquiries may be sent to [nass@usda.gov](mailto:nass@usda.gov).

Travis Averill, Chief, Livestock Branch .....	(202) 692-0069
Scott Hollis, Head, Livestock Section .....	(202) 690-2424
Sherry Bertramsen – Livestock Slaughter .....	(202) 690-8632
Ryan Cowen – Cattle, Cattle on Feed .....	(202) 720-3040
Anthony Fischer – Hogs and Pigs .....	(202) 720-3106
Logan Hartley-Sanguinett – Sheep and Goats .....	(202) 690-3236
Mike Miller – Milk Production and Milk Cows .....	(202) 720-3278
Suzanne Richards – Dairy Products .....	(202) 720-4448

## Access to NASS Reports

For your convenience, you may access NASS reports and products the following ways:

- All reports are available electronically, at no cost, on the NASS web site: [www.nass.usda.gov](http://www.nass.usda.gov).
- Both national and state specific reports are available via a free e-mail subscription. To set-up this free subscription, visit [www.nass.usda.gov](http://www.nass.usda.gov) and click on “National” or “State” in upper right corner above “search” box to create an account and select the reports you would like to receive.
- Cornell’s Mann Library has launched a new website housing NASS’s and other agency’s archived reports. The new website, <https://usda.library.cornell.edu>. All email subscriptions containing reports will be sent from the new website, <https://usda.library.cornell.edu>. To continue receiving the reports via e-mail, you will have to go to the new website, create a new account and re-subscribe to the reports. If you need instructions to set up an account or subscribe, they are located at: <https://usda.library.cornell.edu/help>. You should whitelist [notifications@usda-esmis.library.cornell.edu](mailto:notifications@usda-esmis.library.cornell.edu) in your email client to avoid the emails going into spam/junk folders.

For more information on NASS surveys and reports, call the NASS Agricultural Statistics Hotline at (800) 727-9540, 7:30 a.m. to 4:00 p.m. ET, or e-mail: [nass@usda.gov](mailto:nass@usda.gov).

The U.S. Department of Agriculture (USDA) prohibits discrimination against its customers, employees, and applicants for employment on the basis of race, color, national origin, age, disability, sex, gender identity, religion, reprisal, and where applicable, political beliefs, marital status, familial or parental status, sexual orientation, or all or part of an individual's income is derived from any public assistance program, or protected genetic information in employment or in any program or activity conducted or funded by the Department. (Not all prohibited bases will apply to all programs and/or employment activities.)

If you wish to file a Civil Rights program complaint of discrimination, complete the [USDA Program Discrimination Complaint Form](#) (PDF), found online at [www.ascr.usda.gov/filing-program-discrimination-complaint-usda-customer](http://www.ascr.usda.gov/filing-program-discrimination-complaint-usda-customer), or at any USDA office, or call (866) 632-9992 to request the form. You may also write a letter containing all of the information requested in the form. Send your completed complaint form or letter to us by mail at U.S. Department of Agriculture, Director, Office of Adjudication, 1400 Independence Avenue, S.W., Washington, D.C. 20250-9410, by fax (202) 690-7442 or email at [program.intake@usda.gov](mailto:program.intake@usda.gov).