



Cattle on Feed

ISSN: 1948-9080

Released September 22, 2017, by the National Agricultural Statistics Service (NASS), Agricultural Statistics Board, United States Department of Agriculture (USDA).

United States Cattle on Feed Up 4 Percent

Cattle and calves on feed for the slaughter market in the United States for feedlots with capacity of 1,000 or more head totaled 10.5 million head on September 1, 2017. The inventory was 4 percent above September 1, 2016.

Placements in feedlots during August totaled 1.93 million head, 3 percent above 2016. Net placements were 1.88 million head. During August, placements of cattle and calves weighing less than 600 pounds were 360,000 head, 600-699 pounds were 285,000 head, 700-799 pounds were 418,000 head, 800-899 pounds were 485,000 head, 900-999 pounds were 270,000 head, and 1,000 pounds and greater were 110,000 head.

Marketings of fed cattle during August totaled 1.98 million head, 6 percent above 2016.

Other disappearance totaled 49,000 head during August, 20 percent above 2016.

Number of Cattle on Feed, Placements, Marketings, and Other Disappearance on 1,000+ Capacity Feedlots – United States: September 1, 2016 and 2017

Item	Number		Percent of previous year
	2016	2017	
	(1,000 head)	(1,000 head)	(percent)
On feed August 1	10,165	10,604	104
Placed on feed during August	1,879	1,928	103
Fed cattle marketed during August	1,868	1,979	106
Other disappearance during August	41	49	120
On feed September 1	10,135	10,504	104

Number of Cattle on Feed, Placements, Marketings, and Other Disappearance on 1,000+ Capacity Feedlots – United States: August 1, 2016 and 2017

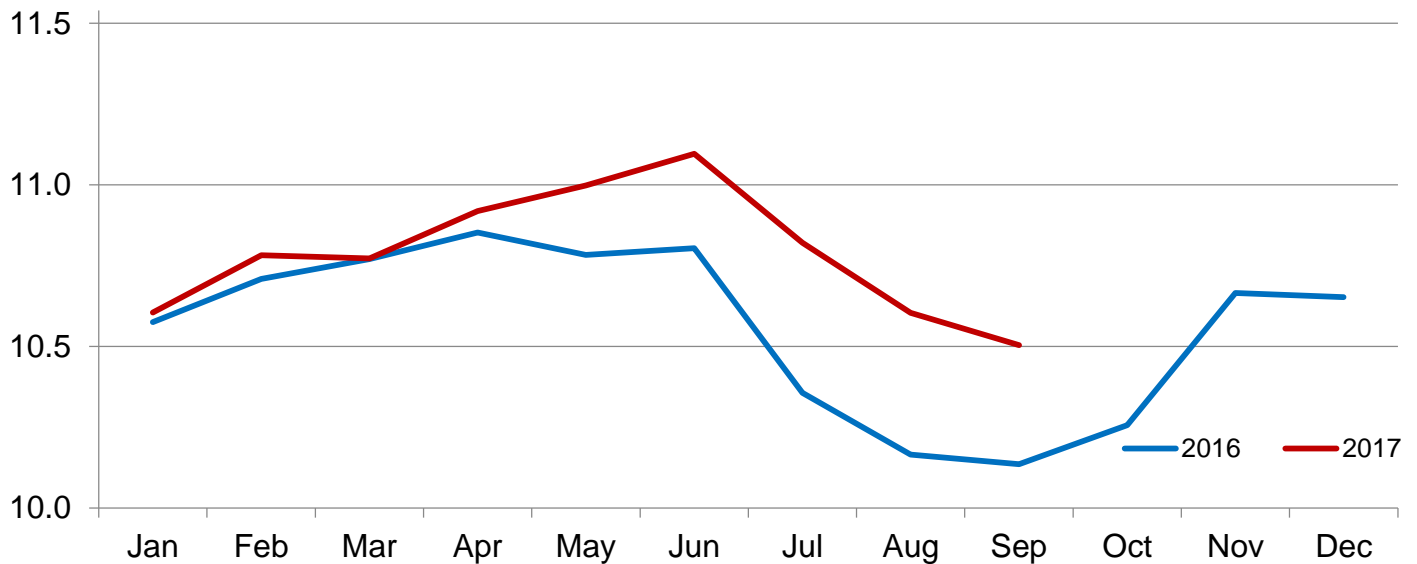
Item	Number		Percent of previous year
	2016	2017	
	(1,000 head)	(1,000 head)	(percent)
On feed July 1	10,356	10,821	104
Placed on feed during July	1,572	1,615	103
Fed cattle marketed during July	1,713	1,784	104
Other disappearance during July	50	48	96
On feed August 1	10,165	10,604	104

Number of Cattle on Feed on 1,000+ Capacity Feedlots by Month – States and United States: 2016 and 2017

State	September 1, 2016	August 1, 2017	September 1, 2017		
			Number	Percent of previous year	Percent of previous month
	(1,000 head)	(1,000 head)	(1,000 head)	(percent)	(percent)
Arizona	271	244	244	90	100
California	405	430	420	104	98
Colorado	800	880	860	108	98
Idaho	225	250	240	107	96
Iowa	580	650	640	110	98
Kansas	2,170	2,180	2,220	102	102
Minnesota	119	130	120	101	92
Nebraska	2,100	2,160	2,150	102	100
Oklahoma	300	315	315	105	100
South Dakota	215	220	215	100	98
Texas	2,490	2,650	2,590	104	98
Washington	180	205	200	111	98
Other States	280	290	290	104	100
United States	10,135	10,604	10,504	104	99

Cattle on Feed Inventory on 1,000+ Capacity Feedlots – United States

Million head

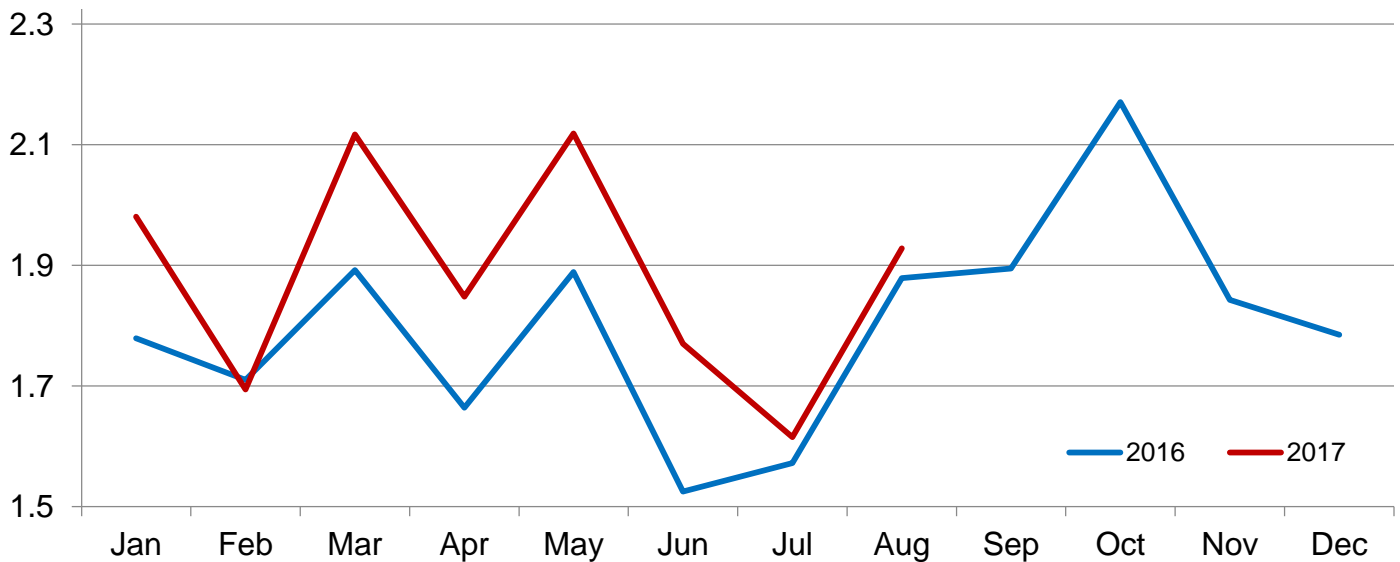


Number of Cattle Placed on Feed on 1,000+ Capacity Feedlots by Month – States and United States: 2016 and 2017

State	During August 2016	During July 2017	During August 2017		
			Number	Percent of previous year	Percent of previous month
	(1,000 head)	(1,000 head)	(1,000 head)	(percent)	(percent)
Arizona	14	18	20	143	111
California	40	34	39	98	115
Colorado	170	115	175	103	152
Idaho	45	35	44	98	126
Iowa	71	60	92	130	153
Kansas	485	430	495	102	115
Minnesota	15	15	20	133	133
Nebraska	465	385	470	101	122
Oklahoma	58	41	65	112	159
South Dakota	33	26	45	136	173
Texas	395	380	385	97	101
Washington	35	39	33	94	85
Other States	53	37	45	85	122
United States	1,879	1,615	1,928	103	119

Number of Cattle Placed on 1,000+ Capacity Feedlots – United States

Million head



Number of Cattle Placed on Feed by Weight Group on 1,000+ Capacity Feedlots by Month – States and United States: 2016 and 2017

State	During August 2016							
	Under 600 lbs	600-699 lbs	700-799 lbs	800-899 lbs	900+ lbs ¹	900-999 lbs	1,000+ lbs	Total
	(1,000 head)	(1,000 head)	(1,000 head)	(1,000 head)	(1,000 head)	(1,000 head)	(1,000 head)	(1,000 head)
Colorado	25	20	35	50	40	(D)	(D)	170
Kansas	75	85	135	120	70	(D)	(D)	485
Nebraska	40	45	90	115	175	(D)	(D)	465
Texas	140	100	95	50	10	(D)	(D)	395
Other States ...	80	40	74	100	70	(D)	(D)	364
United States ..	360	290	429	435	(X)	245	120	1,879
State	During July 2017							
	Under 600 lbs	600-699 lbs	700-799 lbs	800-899 lbs	900+ lbs ¹	900-999 lbs	1,000+ lbs	Total
	(1,000 head)	(1,000 head)	(1,000 head)	(1,000 head)	(1,000 head)	(1,000 head)	(1,000 head)	(1,000 head)
Colorado	25	15	25	30	20	(D)	(D)	115
Kansas	60	75	130	110	55	(D)	(D)	430
Nebraska	40	35	85	110	115	(D)	(D)	385
Texas	155	80	80	45	20	(D)	(D)	380
Other States ...	80	30	65	75	55	(D)	(D)	305
United States ..	360	235	385	370	(X)	190	75	1,615
State	During August 2017							
	Under 600 lbs	600-699 lbs	700-799 lbs	800-899 lbs	900+ lbs ¹	900-999 lbs	1,000+ lbs	Total
	(1,000 head)	(1,000 head)	(1,000 head)	(1,000 head)	(1,000 head)	(1,000 head)	(1,000 head)	(1,000 head)
Colorado	25	20	30	50	50	(D)	(D)	175
Kansas	70	95	135	120	75	(D)	(D)	495
Nebraska	40	40	90	140	160	(D)	(D)	470
Texas	135	85	90	60	15	(D)	(D)	385
Other States ...	90	45	73	115	80	(D)	(D)	403
United States ..	360	285	418	485	(X)	270	110	1,928

(D) Withheld to avoid disclosing data for individual operations.

(X) Not applicable.

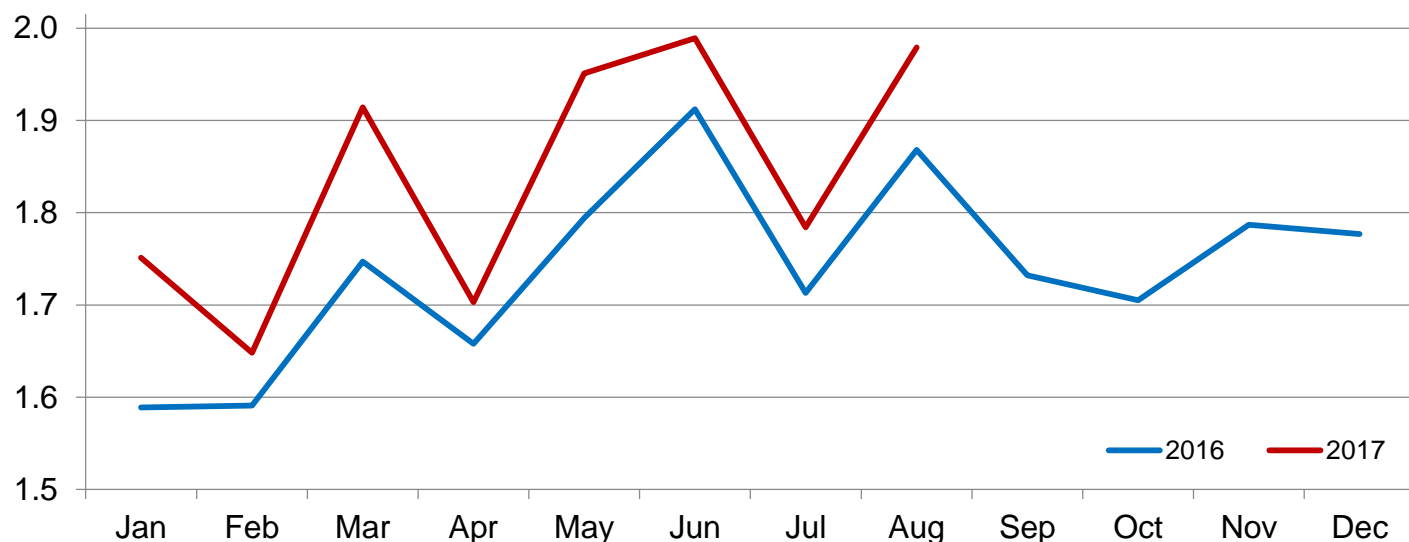
¹ The 900 pounds and greater weight group is the sum of 900-999 pounds and 1,000 pounds and greater weight groups.

Number of Cattle Marketed on 1,000+ Capacity Feedlots by Month – States and United States: 2016 and 2017

State	During August 2016	During July 2017	During August 2017		
			Number	Percent of previous year	Percent of previous month
			(1,000 head)	(percent)	(percent)
Arizona	24	19	19	79	100
California	42	41	46	110	112
Colorado	175	160	190	109	119
Idaho	49	43	52	106	121
Iowa	90	79	101	112	128
Kansas	415	430	445	107	103
Minnesota	28	24	29	104	121
Nebraska	450	445	470	104	106
Oklahoma	57	50	64	112	128
South Dakota	37	29	49	132	169
Texas	415	390	435	105	112
Washington	44	38	36	82	95
Other States	42	36	43	102	119
United States	1,868	1,784	1,979	106	111

Number of Cattle Marketed on 1,000+ Capacity Feedlots – United States

Million head



Other Disappearance on 1,000+ Capacity Feedlots by Month – States and United States: 2016 and 2017

State	During August 2016 (1,000 head)	During July 2017 (1,000 head)	During August 2017		
			Number (1,000 head)	Percent of previous year (percent)	Percent of previous month (percent)
Arizona	1	1	1	100	100
California	3	3	3	100	100
Colorado	5	5	5	100	100
Idaho	1	2	2	200	100
Iowa	1	1	1	100	100
Kansas	10	10	10	100	100
Minnesota	1	1	1	100	100
Nebraska	5	10	10	200	100
Oklahoma	1	1	1	100	100
South Dakota	1	2	1	100	50
Texas	10	10	10	100	100
Washington	1	1	2	200	200
Other States	1	1	2	200	200
United States	41	48	49	120	102

Terms and Definitions of Cattle on Feed Estimates

Cattle on feed are steers and heifers being fed a ration of grain, silage, hay and/or protein supplement for slaughter market that are expected to produce a carcass that will grade select or better. It excludes cattle being "backgrounded only" for later sale as feeders or later placement in another feedlot.

Placements are steers and heifers put into a feedlot, fed a ration which will produce a carcass that will grade select or better, and are intended for the slaughter market.

Marketings are steers and heifers shipped out of feedlots to a slaughter market.

Other disappearance includes death loss, movement from feedlots to pasture, and shipments to other feedlots for further feeding.

Statistical Methodology

Survey Procedures: During January and July all known feedlots in the United States with capacity of 1,000 or more head are surveyed to provide data for cattle on feed estimates. During the other months, all known feedlots from 16 States are surveyed. The 16 States account for approximately 98 percent of the cattle on feed in feedlots with capacity of 1,000 or more head. Individual State estimates are published monthly for 12 of the 16 States. Data collected from the remaining 4 States are used to establish the "Other States" estimates. These 4 States include Illinois, New Mexico, Oregon, and Wyoming. The "Other States" category represents all cattle on feed with a capacity of 1,000 or more head for the rest of the United States.

Estimating Procedures: These cattle on feed estimates were prepared by the Agricultural Statistics Board after reviewing recommendations and analysis submitted by Regional Field Offices. Regional and State survey data were reviewed for reasonableness with each other and with estimates from the previous month when establishing the current estimates.

Revision Policy: Revisions to previous estimates are made to improve month to month relationships. Estimates for the previous month are subject to revision in all States each month when current estimates are made. In February, all monthly estimates for the previous year, and the number of feedlots and annual marketings from two years ago are reviewed and subject to revisions. The reviews are primarily based on slaughter data, state check-off or brand data, and any other data that may have been received after the original estimate was made. Estimates will also be reviewed after data from the *Census of Agriculture* are available. No revisions will be made after that date and estimates become final.

Reliability: Since all 1,000+ capacity cattle on feed operators in every State are not included in the monthly survey, survey estimates are subject to sampling variability. Survey results are also subject to non-sampling errors such as omissions, duplications, and mistakes in reporting, recording, and processing the data. The effects of these errors cannot be measured directly. They are minimized through rigid quality controls in the data collection process and through a careful review of all reported data for consistency and reasonableness.

To assist users in evaluating the reliability of estimates in this report, the "**Root Mean Square Error**" is shown for selected items in the table on the following page. The "Root Mean Square Error" is a statistical measure based on past performance and is computed using the differences between first and latest estimates. The "Root Mean Square Error" for cattle on feed inventory estimates over the past 24 months is 0.1 percent. This means that chances are 2 out of 3 that the final estimate will not be above or below the current estimate of 10.5 million head by more than 0.1 percent. Chances are 9 out of 10 that the difference will not exceed 0.1 percent.

The table on the following page shows a 24 month record of the range of differences between first and latest estimates for selected items. Using estimates of number on feed as an example, changes between the first estimate and the latest estimate during the past 24 months have averaged 3,000 head, ranging from 0 to 15,000 head. During this period the initial estimate has been above the latest estimate 1 time and has been below the latest estimate 6 times. This does not imply that the initial estimate is likely to understate or overstate final inventory.

Reliability of Monthly Cattle on Feed Estimates

[Based on data for the past 24 months]

Item	Root mean square error	90 percent confidence level	Difference between first and latest estimate				
			Average	Smallest	Largest	Months	
						Below latest	Above latest
	(percent)	(percent)	(1,000)	(1,000)	(1,000)	(number)	(number)
Number on feed	0.1	0.1	3	0	15	6	1
Placements	0.2	0.4	2	0	15	6	2
Marketings	0.1	0.2	0	0	10	0	1

Information Contacts

Listed below are the commodity specialists in the Livestock Branch of the National Agricultural Statistics Service to contact for additional information. E-mail inquiries may be sent to nass@nass.usda.gov.

Vacant, Chief, Livestock Branch	(202) 720-3570
Scott Hollis, Head, Livestock Section	(202) 690-2424
Sherry Bertramsen – Livestock Slaughter	(202) 720-3240
David Colwell – Sheep and Goats	(202) 720-8784
Donnie Fike – Dairy Products	(202) 690-3236
Michael Klamm – Cattle, Cattle on Feed	(202) 720-3040
Mike Miller – Milk Production and Milk Cows	(202) 720-3278
Seth Riggins – Hogs and Pigs	(202) 720-3106

Access to NASS Reports

For your convenience, you may access NASS reports and products the following ways:

- All reports are available electronically, at no cost, on the NASS web site: www.nass.usda.gov
- Both national and state specific reports are available via a free e-mail subscription. To set-up this free subscription, visit www.nass.usda.gov and click on “National” or “State” in upper right corner above “search” box to create an account and select the reports you would like to receive.

For more information on NASS surveys and reports, call the NASS Agricultural Statistics Hotline at (800) 727-9540, 7:30 a.m. to 4:00 p.m. ET, or e-mail: nass@nass.usda.gov.

The U.S. Department of Agriculture (USDA) prohibits discrimination against its customers, employees, and applicants for employment on the basis of race, color, national origin, age, disability, sex, gender identity, religion, reprisal, and where applicable, political beliefs, marital status, familial or parental status, sexual orientation, or all or part of an individual's income is derived from any public assistance program, or protected genetic information in employment or in any program or activity conducted or funded by the Department. (Not all prohibited bases will apply to all programs and/or employment activities.)

If you wish to file a Civil Rights program complaint of discrimination, complete the [USDA Program Discrimination Complaint Form](#) (PDF), found online at http://www.ascr.usda.gov/complaint_filing_cust.html, or at any USDA office, or call (866) 632-9992 to request the form. You may also write a letter containing all of the information requested in the form. Send your completed complaint form or letter to us by mail at U.S. Department of Agriculture, Director, Office of Adjudication, 1400 Independence Avenue, S.W., Washington, D.C. 20250-9410, by fax (202) 690-7442 or email at program.intake@usda.gov.

USDA NASS Data Users' Meeting Tuesday, October 24, 2017

**Embassy Suites Hotel Kansas City Plaza
220 West 43rd Street
Kansas City, MO 64111
816-756-1720**

USDA's National Agricultural Statistics Service will hold an open forum for users of U.S. domestic and international agriculture data. NASS is organizing the 2017 Data Users' Meeting in cooperation with five other USDA agencies Agricultural Marketing Service, Economic Research Service, Farm Service Agency, Foreign Agricultural Service, and World Agricultural Outlook Board and the Census Bureau's Foreign Trade Division. Agency representatives will provide updates on recent and pending changes in statistical and information programs important to agriculture, answer questions, and welcome comments and input from data users.

For registration details or additional information about the Data Users' Meeting, see the meeting page on the NASS website (https://www.nass.usda.gov/Education_and_Outreach/Meeting/index.php) or contact Zisa Lubarov-Walton (NASS) at 202-720-8141 or at zisa.lubarov-walton@nass.usda.gov.

The Data Users' Meeting precedes the Industry Outlook Conference at the same location on Wednesday, October 25, 2017. The outlook meeting brings together analysts from various commodity sectors to discuss developments and trends. For registration details or additional information about the Industry Outlook Conference, see the conference page on the LMIC website (<http://lmic.info/page/meetings>) or contact James Robb at (303) 716-9933.