



Released September 20, 2019, by the National Agricultural Statistics Service (NASS), Agricultural Statistics Board, United States Department of Agriculture (USDA).

United States Cattle on Feed Down 1 Percent

Cattle and calves on feed for the slaughter market in the United States for feedlots with capacity of 1,000 or more head totaled 11.0 million head on September 1, 2019. The inventory was 1 percent below September 1, 2018.

Placements in feedlots during August totaled 1.88 million head, 9 percent below 2018. Net placements were 1.82 million head. During August, placements of cattle and calves weighing less than 600 pounds were 385,000 head, 600-699 pounds were 300,000 head, 700-799 pounds were 424,000 head, 800-899 pounds were 440,000 head, 900-999 pounds were 230,000 head, and 1,000 pounds and greater were 105,000 head.

Marketings of fed cattle during August totaled 1.95 million head, 2 percent below 2018.

Other disappearance totaled 61,000 head during August, 11 percent above 2018.

Cattle on Feed Inventory, Placements, Marketings, and Other Disappearance on 1,000+ Capacity Feedlots – United States: September 1, 2018 and 2019

Item	Number		Percent of previous year
	2018	2019	
	(1,000 head)	(1,000 head)	(percent)
On feed August 1	11,093	11,112	100
Placed on feed during August	2,070	1,884	91
Fed cattle marketed during August	1,983	1,953	98
Other disappearance during August	55	61	111
On feed September 1	11,125	10,982	99

Cattle on Feed Inventory, Placements, Marketings, and Other Disappearance on 1,000+ Capacity Feedlots – United States: August 1, 2018 and 2019

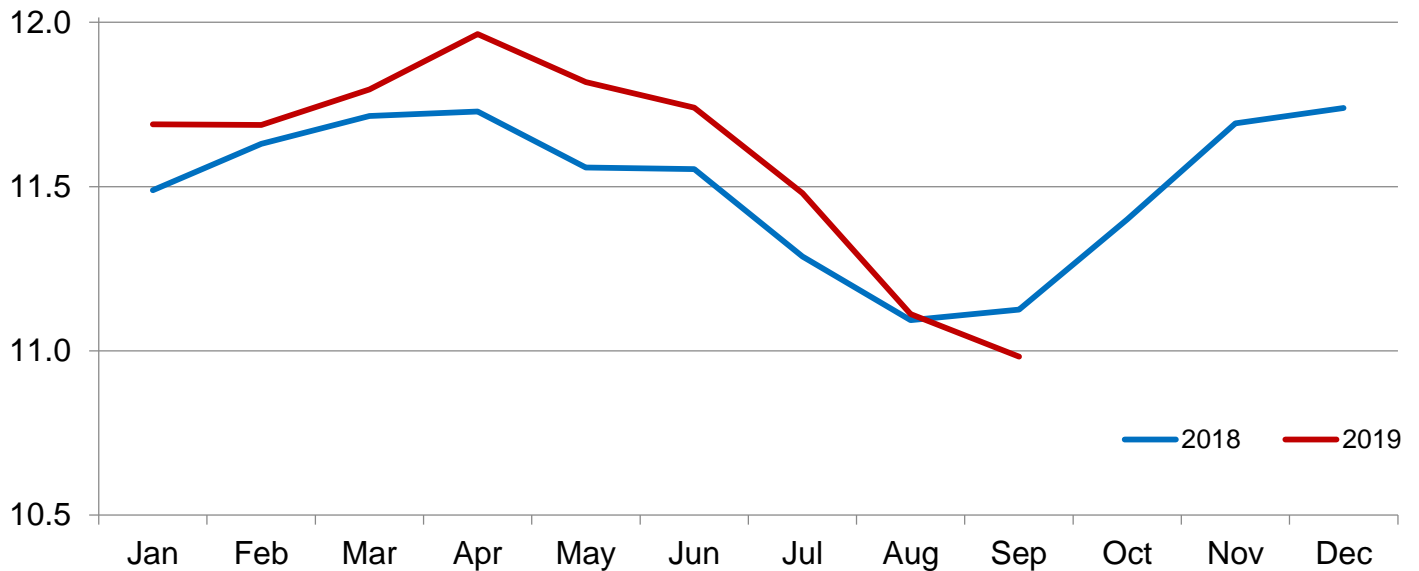
Item	Number		Percent of previous year
	2018	2019	
	(1,000 head)	(1,000 head)	(percent)
On feed July 1	11,287	11,480	102
Placed on feed during July	1,742	1,705	98
Fed cattle marketed during July	1,873	2,002	107
Other disappearance during July	63	71	113
On feed August 1	11,093	11,112	100

Cattle on Feed Inventory on 1,000+ Capacity Feedlots by Month – States and United States: 2018 and 2019

State	September 1, 2018	August 1, 2019	September 1, 2019		
			Number	Percent of previous year	Percent of previous month
	(1,000 head)	(1,000 head)	(1,000 head)	(percent)	(percent)
Arizona	295	272	257	87	94
California	525	535	530	101	99
Colorado	900	970	930	103	96
Idaho	255	280	270	106	96
Iowa	680	630	630	93	100
Kansas	2,310	2,340	2,340	101	100
Minnesota	125	110	100	80	91
Nebraska	2,330	2,190	2,160	93	99
Oklahoma	320	315	315	98	100
South Dakota	200	195	205	103	105
Texas	2,680	2,760	2,730	102	99
Washington	210	225	220	105	98
Other States	295	290	295	100	102
United States	11,125	11,112	10,982	99	99

Cattle on Feed Inventory on 1,000+ Capacity Feedlots – United States

Million head

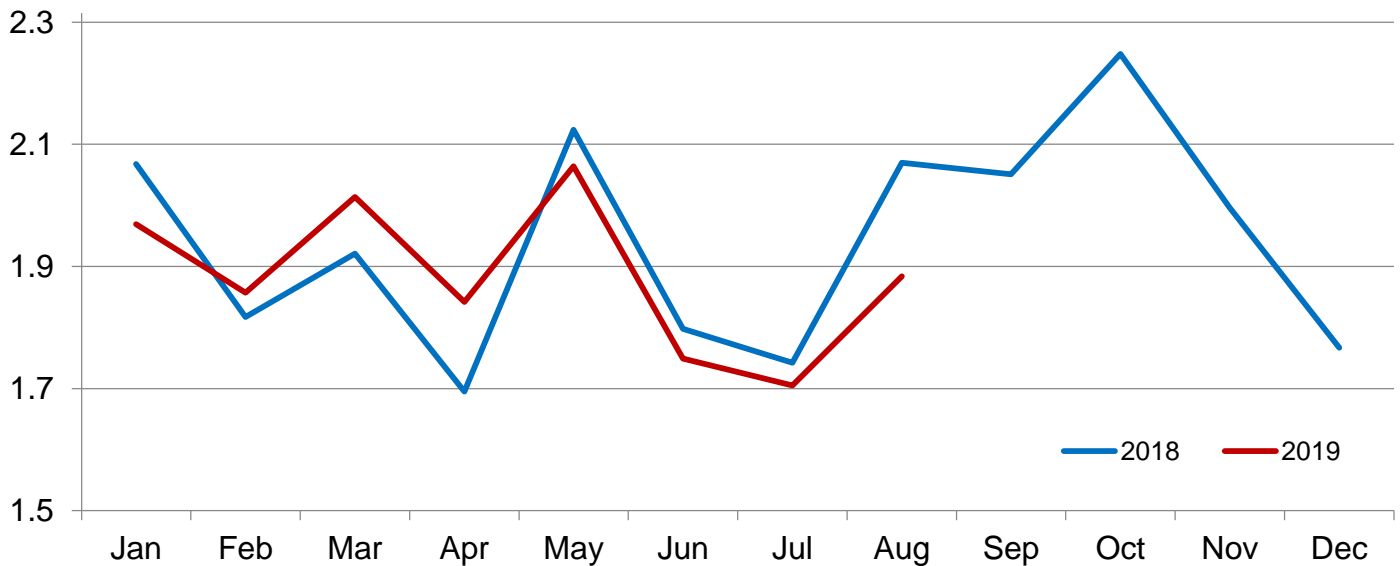


Cattle Placed on Feed on 1,000+ Capacity Feedlots by Month – States and United States: 2018 and 2019

State	During August 2018	During July 2019	During August 2019		
			Number	Percent of previous year	Percent of previous month
	(1,000 head)	(1,000 head)	(1,000 head)	(percent)	(percent)
Arizona	20	17	21	105	124
California	54	63	56	104	89
Colorado	205	130	170	83	131
Idaho	57	38	44	77	116
Iowa	82	61	71	87	116
Kansas	520	450	440	85	98
Minnesota	23	11	14	61	127
Nebraska	480	400	445	93	111
Oklahoma	65	45	51	78	113
South Dakota	49	23	45	92	196
Texas	415	380	435	105	114
Washington	35	32	43	123	134
Other States	65	55	49	75	89
United States	2,070	1,705	1,884	91	110

Cattle Placed on 1,000+ Capacity Feedlots – United States

Million head



Cattle Placed on Feed by Weight Group on 1,000+ Capacity Feedlots and Month – States and United States: 2018 and 2019

State	During August 2018							
	Under 600 lbs	600-699 lbs	700-799 lbs	800-899 lbs	900+ lbs ¹	900-999 lbs	1,000+ lbs	Total
	(1,000 head)	(1,000 head)	(1,000 head)	(1,000 head)	(1,000 head)	(1,000 head)	(1,000 head)	(1,000 head)
Colorado	35	25	40	50	55	(D)	(D)	205
Kansas	70	115	150	120	65	(D)	(D)	520
Nebraska	50	45	90	145	150	(D)	(D)	480
Texas	165	100	90	50	10	(D)	(D)	415
Other States ...	110	50	90	110	90	(D)	(D)	450
United States ..	430	335	460	475	(X)	240	130	2,070

State	During July 2019							
	Under 600 lbs	600-699 lbs	700-799 lbs	800-899 lbs	900+ lbs ¹	900-999 lbs	1,000+ lbs	Total
	(1,000 head)	(1,000 head)	(1,000 head)	(1,000 head)	(1,000 head)	(1,000 head)	(1,000 head)	(1,000 head)
Colorado	25	20	30	25	30	(D)	(D)	130
Kansas	50	75	145	115	65	(D)	(D)	450
Nebraska	35	35	95	125	110	(D)	(D)	400
Texas	155	95	70	45	15	(D)	(D)	380
Other States ...	95	35	70	75	70	(D)	(D)	345
United States ..	360	260	410	385	(X)	200	90	1,705

State	During August 2019							
	Under 600 lbs	600-699 lbs	700-799 lbs	800-899 lbs	900+ lbs ¹	900-999 lbs	1,000+ lbs	Total
	(1,000 head)	(1,000 head)	(1,000 head)	(1,000 head)	(1,000 head)	(1,000 head)	(1,000 head)	(1,000 head)
Colorado	25	25	35	45	40	(D)	(D)	170
Kansas	60	80	125	120	55	(D)	(D)	440
Nebraska	40	40	85	130	150	(D)	(D)	445
Texas	165	110	100	50	10	(D)	(D)	435
Other States ...	95	45	79	95	80	(D)	(D)	394
United States ..	385	300	424	440	(X)	230	105	1,884

(D) Withheld to avoid disclosing data for individual operations.

(X) Not applicable.

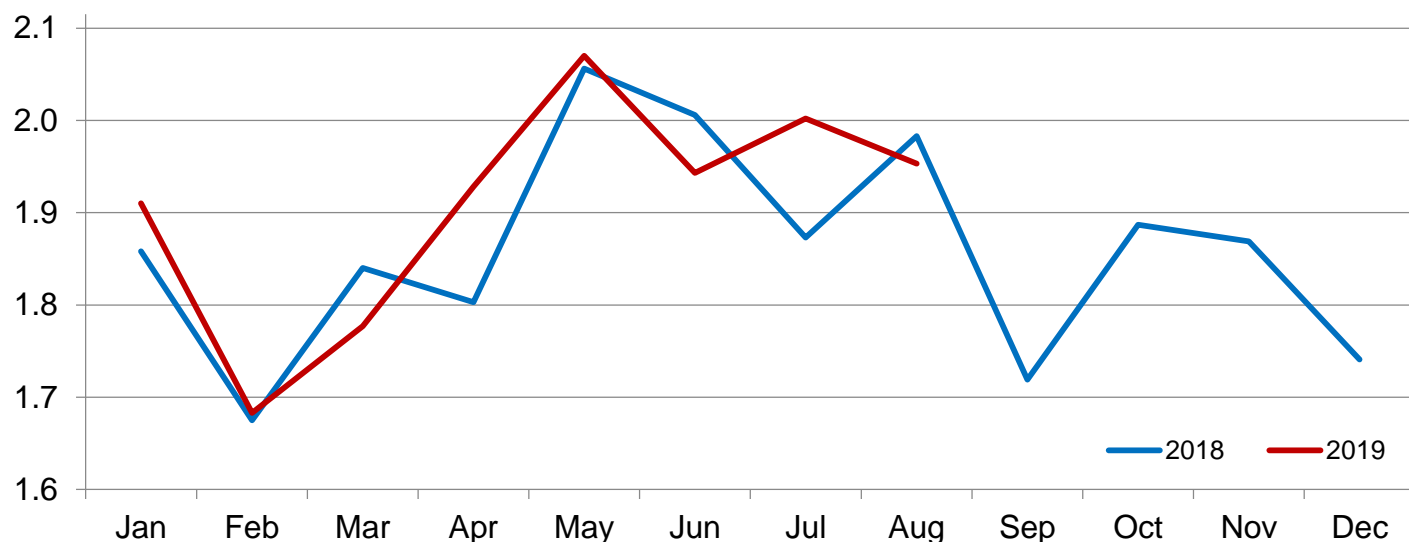
¹ The 900 pounds and greater weight group is the sum of 900-999 pounds and 1,000 pounds and greater weight groups.

Cattle Marketed on 1,000+ Capacity Feedlots by Month – States and United States: 2018 and 2019

State	During August 2018	During July 2019	During August 2019		
			Number	Percent of previous year	Percent of previous month
			(1,000 head)	(percent)	(percent)
Arizona	22	39	35	159	90
California	50	59	55	110	93
Colorado	190	185	205	108	111
Idaho	46	46	53	115	115
Iowa	100	77	69	69	90
Kansas	430	455	430	100	95
Minnesota	27	25	23	85	92
Nebraska	470	490	460	98	94
Oklahoma	59	49	49	83	100
South Dakota	48	37	34	71	92
Texas	440	445	450	102	101
Washington	44	41	47	107	115
Other States	57	54	43	75	80
United States	1,983	2,002	1,953	98	98

Cattle Marketed on 1,000+ Capacity Feedlots – United States

Million head



Cattle Other Disappearance on 1,000+ Capacity Feedlots by Month – States and United States: 2018 and 2019

State	During August 2018	During July 2019	During August 2019		
			Number	Percent of previous year	Percent of previous month
	(1,000 head)	(1,000 head)	(1,000 head)	(percent)	(percent)
Arizona	1	1	1	100	100
California	4	4	6	150	150
Colorado	5	5	5	100	100
Idaho	1	2	1	100	50
Iowa	2	4	2	100	50
Kansas	10	15	10	100	67
Minnesota	1	1	1	100	100
Nebraska	10	20	15	150	75
Oklahoma	1	1	2	200	200
South Dakota	1	1	1	100	100
Texas	15	15	15	100	100
Washington	1	1	1	100	100
Other States	3	1	1	33	100
United States	55	71	61	111	86

Terms and Definitions of Cattle on Feed Estimates

Cattle on feed are steers and heifers being fed a ration of grain, silage, hay and/or protein supplement for slaughter market that are expected to produce a carcass that will grade select or better. It excludes cattle being "backgrounded only" for later sale as feeders or later placement in another feedlot.

Placements are steers and heifers put into a feedlot, fed a ration which will produce a carcass that will grade select or better, and are intended for the slaughter market.

Marketings are steers and heifers shipped out of feedlots to a slaughter market.

Other disappearance includes death loss, movement from feedlots to pasture, and shipments to other feedlots for further feeding.

Statistical Methodology

Survey Procedures: During January and July all known feedlots in the United States with capacity of 1,000 or more head are surveyed to provide data for cattle on feed estimates. During the other months, all known feedlots from 16 States are surveyed. The 16 States account for approximately 98 percent of the cattle on feed in feedlots with capacity of 1,000 or more head. Individual State estimates are published monthly for 12 of the 16 States. Data collected from the remaining 4 States are used to establish the "Other States" estimates. These 4 States include Illinois, New Mexico, Oregon, and Wyoming. The "Other States" category represents all cattle on feed with a capacity of 1,000 or more head for the rest of the United States.

Estimating Procedures: These cattle on feed estimates were prepared by the Agricultural Statistics Board after reviewing recommendations and analysis submitted by Regional Field Offices. Regional and State survey data were reviewed for reasonableness with each other and with estimates from the previous month when establishing the current estimates.

Revision Policy: Revisions to previous estimates are made to improve month to month relationships. Estimates for the previous month are subject to revision in all States each month when current estimates are made. In February, all monthly estimates for the previous year, and the number of feedlots and annual marketings from two years ago are reviewed and subject to revisions. The reviews are primarily based on slaughter data, state check-off or brand data, and any other data that may have been received after the original estimate was made. Estimates will also be reviewed after data from the *Census of Agriculture* are available. No revisions will be made after that date and estimates become final.

Reliability: Since all 1,000+ capacity cattle on feed operators in every State are not included in the monthly survey, survey estimates are subject to sampling variability. Survey results are also subject to non-sampling errors such as omissions, duplications, and mistakes in reporting, recording, and processing the data. The effects of these errors cannot be measured directly. They are minimized through rigid quality controls in the data collection process and through a careful review of all reported data for consistency and reasonableness.

To assist users in evaluating the reliability of estimates in this report, the "**Root Mean Square Error**" is shown for selected items in the table on the following page. The "Root Mean Square Error" is a statistical measure based on past performance and is computed using the differences between first and latest estimates. The "Root Mean Square Error" for cattle on feed inventory estimates over the past 24 months is 0.0 percent. This means that chances are 2 out of 3 that the final estimate will not be above or below the current estimate of 11.0 million head by more than 0.0 percent. Chances are 9 out of 10 that the difference will not exceed 0.0 percent.

The table on the following page shows a 24 month record of the range of differences between first and latest estimates for selected items. Using estimates of number on feed as an example, changes between the first estimate and the latest estimate during the past 24 months have averaged 1,000 head, ranging from 0 to 10,000 head. During this period the initial estimate has been above the latest estimate 1 times and has been below the latest estimate 2 times. This does not imply that the initial estimate is likely to understate or overstate final inventory.

Reliability of Monthly Cattle on Feed Estimates

[Based on data for the past 24 months]

Item	Root mean square error	90 percent confidence level	Difference between first and latest estimate				
			Average	Smallest	Largest	Months	
						Below latest	Above latest
	(percent)	(percent)	(1,000)	(1,000)	(1,000)	(number)	(number)
Number on feed	0.0	0.0	1	0	10	2	1
Placements	0.1	0.3	1	0	10	2	1
Marketings	0.0	0.0	0	0	2	0	1

Information Contacts

Listed below are the commodity specialists in the Livestock Branch of the National Agricultural Statistics Service to contact for additional information. E-mail inquiries may be sent to nass@usda.gov.

Travis Averill, Chief, Livestock Branch	(202) 720-3570
Scott Hollis, Head, Livestock Section	(202) 690-2424
Sherry Bertramsen – Livestock Slaughter	(202) 690-8632
Holly Brenize – Sheep and Goats	(202) 720-0585
Donnie Fike – Dairy Products	(202) 720-4448
Heidi Lanouette – Cattle, Cattle on Feed	(202) 720-3040
Mike Miller – Milk Production and Milk Cows	(202) 720-3278
Seth Riggins – Hogs and Pigs	(202) 720-3106

Access to NASS Reports

For your convenience, you may access NASS reports and products the following ways:

- All reports are available electronically, at no cost, on the NASS web site: www.nass.usda.gov
- Both national and state specific reports are available via a free e-mail subscription. To set-up this free subscription, visit www.nass.usda.gov and click on “National” or “State” in upper right corner above “search” box to create an account and select the reports you would like to receive.
- Cornell’s Mann Library has launched a new website housing NASS’s and other agency’s archived reports. The new website, <https://usda.library.cornell.edu>. All email subscriptions containing reports will be sent from the new website, <https://usda.library.cornell.edu>. To continue receiving the reports via e-mail, you will have to go to the new website, create a new account and re-subscribe to the reports. If you need instructions to set up an account or subscribe, they are located at: <https://usda.library.cornell.edu/help>. You should whitelist notifications@usda-esmis.library.cornell.edu in your email client to avoid the emails going into spam/junk folders.

For more information on NASS surveys and reports, call the NASS Agricultural Statistics Hotline at (800) 727-9540, 7:30 a.m. to 4:00 p.m. ET, or e-mail: nass@nass.usda.gov.

The U.S. Department of Agriculture (USDA) prohibits discrimination against its customers, employees, and applicants for employment on the basis of race, color, national origin, age, disability, sex, gender identity, religion, reprisal, and where applicable, political beliefs, marital status, familial or parental status, sexual orientation, or all or part of an individual's income is derived from any public assistance program, or protected genetic information in employment or in any program or activity conducted or funded by the Department. (Not all prohibited bases will apply to all programs and/or employment activities.)

If you wish to file a Civil Rights program complaint of discrimination, complete the [USDA Program Discrimination Complaint Form](#) (PDF), found online at www.ascr.usda.gov/filing-program-discrimination-complaint-usda-customer, or at any USDA office, or call (866) 632-9992 to request the form. You may also write a letter containing all of the information requested in the form. Send your completed complaint form or letter to us by mail at U.S. Department of Agriculture, Director, Office of Adjudication, 1400 Independence Avenue, S.W., Washington, D.C. 20250-9410, by fax (202) 690-7442 or email at program.intake@usda.gov.

USDA Data Users' Meeting



USDA NASS Data Users' Meeting **Tuesday, October 15, 2019**

American Farm Bureau Federation
600 Maryland Ave SW #1000w
Washington, DC 20024

USDA's National Agricultural Statistics Service will hold an open forum for users of U.S. domestic and international agriculture data. NASS is organizing the Data Users' Meeting in cooperation with five other USDA agencies – Agricultural Marketing Service, Economic Research Service, Farm Service Agency, Foreign Agricultural Service, and World Agricultural Outlook Board – and the Census Bureau's Foreign Trade Division. Agency representatives will provide updates on recent and pending changes in statistical and information programs important to agriculture, answer questions, and welcome comments and input from data users.

For registration details and additional information about the Data Users' Meeting, see the meeting page on the NASS website (https://www.nass.usda.gov/Education_and_Outreach/Meeting/index.php). Contact Vernita Murray (NASS) at 202-690-8141 or vernita.murray@nass.usda.gov or Patricia Snipe (NASS) at 202-720-2248 or patricia.snipe@nass.usda.gov for information.