



---

Released September 24, 2021, by the National Agricultural Statistics Service (NASS), Agricultural Statistics Board, United States Department of Agriculture (USDA).

## United States Cattle on Feed Down 1 Percent

**Cattle and calves on feed** for the slaughter market in the United States for feedlots with capacity of 1,000 or more head totaled 11.2 million head on September 1, 2021. The inventory was 1 percent below September 1, 2020. This is the second highest September 1 inventory since the series began in 1996.

**Placements** in feedlots during August totaled 2.10 million head, 2 percent above 2020. Net placements were 2.05 million head. During August, placements of cattle and calves weighing less than 600 pounds were 405,000 head, 600-699 pounds were 310,000 head, 700-799 pounds were 480,000 head, 800-899 pounds were 534,000 head, 900-999 pounds were 275,000 head, and 1,000 pounds and greater were 100,000 head.

**Marketings** of fed cattle during August totaled 1.89 million head, slightly below 2020.

**Other disappearance** totaled 59,000 head during August, 7 percent above 2020.

**Cattle on Feed Inventory, Placements, Marketings, and Other Disappearance on 1,000+ Capacity Feedlots – United States: September 1, 2020 and 2021**

Item	2020	2021	Percent of previous year
	(1,000 head)	(1,000 head)	(percent)
On feed August 1 .....	11,284	11,074	98
Placed on feed during August .....	2,057	2,104	102
Fed cattle marketed during August .....	1,892	1,885	100
Other disappearance during August .....	55	59	107
On feed September 1 .....	11,394	11,234	99

**Cattle on Feed Inventory, Placements, Marketings, and Other Disappearance on 1,000+ Capacity Feedlots – United States: August 1, 2020 and 2021**

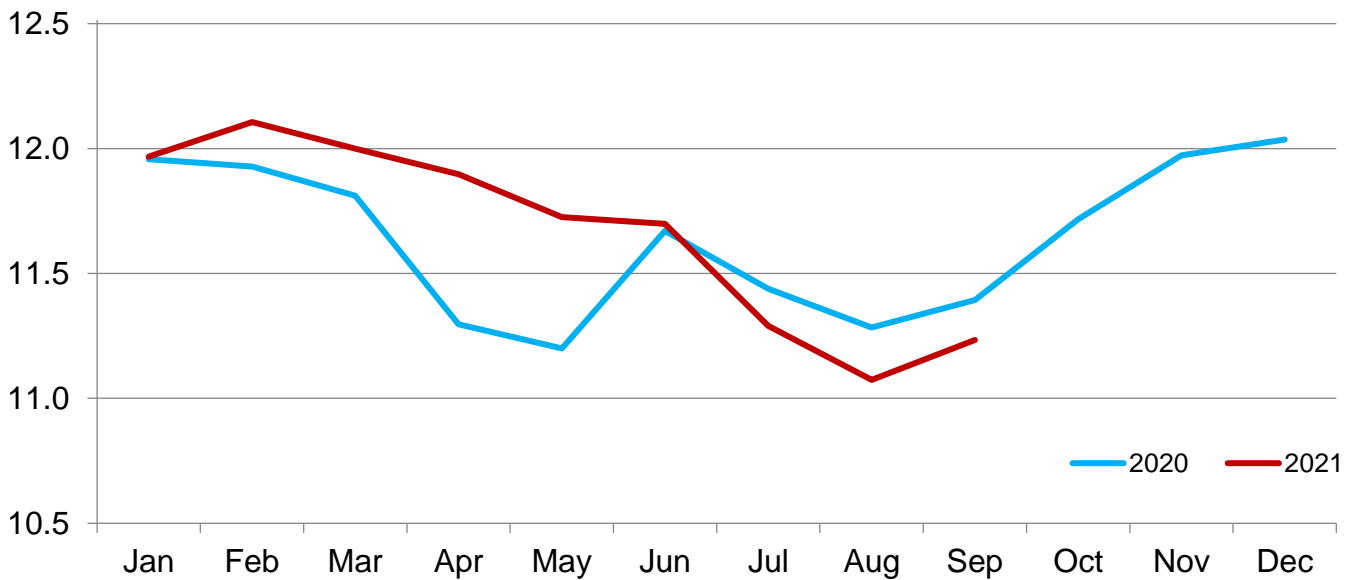
Item	2020	2021	Percent of previous year
	(1,000 head)	(1,000 head)	(percent)
On feed July 1 .....	11,438	11,290	99
Placed on feed during July .....	1,893	1,739	92
Fed cattle marketed during July .....	1,990	1,900	95
Other disappearance during July .....	57	55	96
On feed August 1 .....	11,284	11,074	98

**Cattle on Feed Inventory on 1,000+ Capacity Feedlots by Month – States and United States: 2020 and 2021**

State	September 1, 2020	August 1, 2021	September 1, 2021		
			Inventory	Percent of previous year	Percent of previous month
	(1,000 head)	(1,000 head)	(1,000 head)	(percent)	(percent)
Arizona .....	264	274	269	102	98
California .....	535	540	530	99	98
Colorado .....	1,040	1,040	1,080	104	104
Idaho .....	255	275	290	114	105
Iowa .....	610	600	590	97	98
Kansas .....	2,470	2,410	2,470	100	102
Minnesota .....	110	95	90	82	95
Nebraska .....	2,280	2,200	2,280	100	104
Oklahoma .....	310	270	275	89	102
South Dakota .....	190	195	200	105	103
Texas .....	2,850	2,720	2,700	95	99
Washington .....	220	190	195	89	103
Other States .....	260	265	265	102	100
United States .....	11,394	11,074	11,234	99	101

**Cattle on Feed Inventory on 1,000+ Capacity Feedlots – United States**

Million head

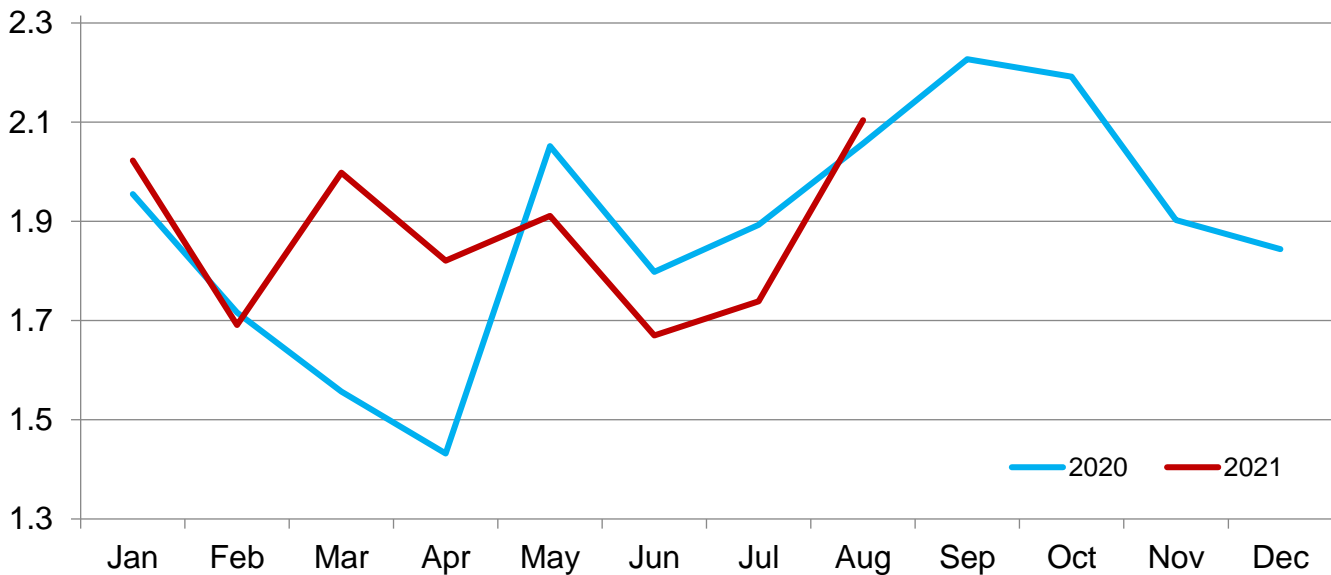


**Cattle Placed on Feed on 1,000+ Capacity Feedlots by Month – States and United States: 2020 and 2021**

State	During August 2020 (1,000 head)	During July 2021 (1,000 head)	During August 2021		
			Placements (1,000 head)	Percent of previous year (percent)	Percent of previous month (percent)
Arizona .....	15	22	19	127	86
California .....	52	64	52	100	81
Colorado .....	180	160	215	119	134
Idaho .....	41	38	53	129	139
Iowa .....	75	56	78	104	139
Kansas .....	540	440	530	98	120
Minnesota .....	12	11	14	117	127
Nebraska .....	505	440	560	111	127
Oklahoma .....	58	38	57	98	150
South Dakota .....	47	21	44	94	210
Texas .....	440	370	395	90	107
Washington .....	40	31	36	90	116
Other States .....	52	48	51	98	106
United States .....	2,057	1,739	2,104	102	121

**Cattle Placed on 1,000+ Capacity Feedlots – United States**

Million head



**Cattle Placed on Feed by Weight Group on 1,000+ Capacity Feedlots and Month – States and United States: 2020 and 2021**

State	During August 2020							
	Under 600 lbs	600-699 lbs	700-799 lbs	800-899 lbs	900+ lbs <sup>1</sup>	900-999 lbs	1,000+ lbs	Total
	(1,000 head)	(1,000 head)	(1,000 head)	(1,000 head)	(1,000 head)	(1,000 head)	(1,000 head)	(1,000 head)
Colorado .....	25	30	35	50	40	(D)	(D)	180
Kansas .....	60	100	170	150	60	(D)	(D)	540
Nebraska .....	45	50	105	165	140	(D)	(D)	505
Texas .....	180	110	90	50	10	(D)	(D)	440
Other States ...	95	45	70	107	75	(D)	(D)	392
United States ..	405	335	470	522	(X)	230	95	2,057
State	During July 2021							
	Under 600 lbs	600-699 lbs	700-799 lbs	800-899 lbs	900+ lbs <sup>1</sup>	900-999 lbs	1,000+ lbs	Total
	(1,000 head)	(1,000 head)	(1,000 head)	(1,000 head)	(1,000 head)	(1,000 head)	(1,000 head)	(1,000 head)
Colorado .....	35	25	35	35	30	(D)	(D)	160
Kansas .....	55	70	145	115	55	(D)	(D)	440
Nebraska .....	35	45	95	150	115	(D)	(D)	440
Texas .....	155	80	75	45	15	(D)	(D)	370
Other States ...	95	35	60	79	60	(D)	(D)	329
United States ..	375	255	410	424	(X)	205	70	1,739
State	During August 2021							
	Under 600 lbs	600-699 lbs	700-799 lbs	800-899 lbs	900+ lbs <sup>1</sup>	900-999 lbs	1,000+ lbs	Total
	(1,000 head)	(1,000 head)	(1,000 head)	(1,000 head)	(1,000 head)	(1,000 head)	(1,000 head)	(1,000 head)
Colorado .....	35	30	45	60	45	(D)	(D)	215
Kansas .....	65	90	165	140	70	(D)	(D)	530
Nebraska .....	45	50	115	180	170	(D)	(D)	560
Texas .....	160	100	80	45	10	(D)	(D)	395
Other States ...	100	40	75	109	80	(D)	(D)	404
United States ..	405	310	480	534	(X)	275	100	2,104

(D) Withheld to avoid disclosing data for individual operations.

(X) Not applicable.

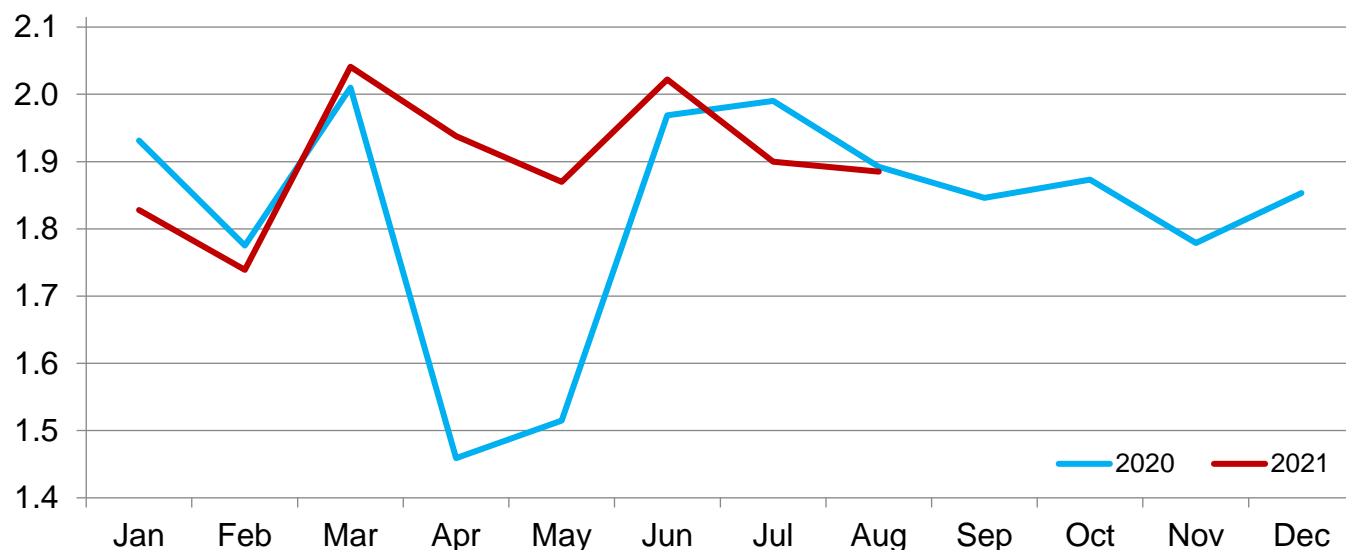
<sup>1</sup> The 900 pounds and greater weight group is the sum of 900-999 pounds and 1,000 pounds and greater weight groups.

**Cattle Marketed on 1,000+ Capacity Feedlots by Month – States and United States: 2020 and 2021**

State	During August 2020	During July 2021	During August 2021		
			Marketings	Percent of previous year	Percent of previous month
	(1,000 head)	(1,000 head)	(1,000 head)	(percent)	(percent)
Arizona .....	19	22	23	121	105
California .....	54	56	54	100	96
Colorado .....	155	175	170	110	97
Idaho .....	45	41	37	82	90
Iowa .....	83	53	86	104	162
Kansas .....	470	470	460	98	98
Minnesota .....	21	15	18	86	120
Nebraska .....	435	520	470	108	90
Oklahoma .....	52	42	51	98	121
South Dakota .....	34	25	37	109	148
Texas .....	430	410	400	93	98
Washington .....	44	30	30	68	100
Other States .....	50	41	49	98	120
United States .....	1,892	1,900	1,885	100	99

## Cattle Marketed on 1,000+ Capacity Feedlots – United States

Million head



### Cattle Other Disappearance on 1,000+ Capacity Feedlots by Month – States and United States: 2020 and 2021

State	During August 2020 (1,000 head)	During July 2021 (1,000 head)	During August 2021		
			Other disappearance (1,000 head)	Percent of previous year (percent)	Percent of previous month (percent)
Arizona .....	1	1	1	100	100
California .....	8	8	8	100	100
Colorado .....	5	5	5	100	100
Idaho .....	1	2	1	100	50
Iowa .....	2	3	2	100	67
Kansas .....	10	10	10	100	100
Minnesota .....	1	1	1	100	100
Nebraska .....	10	10	10	100	100
Oklahoma .....	1	1	1	100	100
South Dakota .....	3	1	2	67	200
Texas .....	10	10	15	150	150
Washington .....	1	1	1	100	100
Other States .....	2	2	2	100	100
United States .....	55	55	59	107	107

## Terms and Definitions of Cattle on Feed Estimates

**Cattle on feed** are steers and heifers being fed a ration of grain, silage, hay and/or protein supplement for slaughter market that are expected to produce a carcass that will grade select or better. It excludes cattle being "backgrounded only" for later sale as feeders or later placement in another feedlot.

**Placements** are steers and heifers put into a feedlot, fed a ration which will produce a carcass that will grade select or better, and are intended for the slaughter market.

**Marketings** are steers and heifers shipped out of feedlots to a slaughter market.

**Other disappearance** includes death loss, movement from feedlots to pasture, and shipments to other feedlots for further feeding.

## Statistical Methodology

**Survey Procedures:** During January and July all known feedlots in the United States with capacity of 1,000 or more head are surveyed to provide data for cattle on feed estimates. During the other months, all known feedlots from 16 States are surveyed. The 16 States account for approximately 98 percent of the cattle on feed in feedlots with capacity of 1,000 or more head. Individual State estimates are published monthly for 12 of the 16 States. Data collected from the remaining 4 States are used to establish the "Other States" estimates. These 4 States include Illinois, New Mexico, Oregon, and Wyoming. The "Other States" category represents all cattle on feed with a capacity of 1,000 or more head for the rest of the United States.

**Estimating Procedures:** These cattle on feed estimates were prepared by the Agricultural Statistics Board after reviewing recommendations and analysis submitted by Regional Field Offices. Regional and State survey data were reviewed for reasonableness with each other and with estimates from the previous month when establishing the current estimates.

**Revision Policy:** Revisions to previous estimates are made to improve month to month relationships. Estimates for the previous month are subject to revision in all States each month when current estimates are made. In February, all monthly estimates for the previous year, and the number of feedlots and annual marketings from two years ago are reviewed and subject to revisions. The reviews are primarily based on slaughter data, state check-off or brand data, and any other data that may have been received after the original estimate was made. Estimates will also be reviewed after data from the *Census of Agriculture* are available. No revisions will be made after that date and estimates become final.

**Reliability:** Since all 1,000+ capacity cattle on feed operators in every State are not included in the monthly survey, survey estimates are subject to sampling variability. Survey results are also subject to non-sampling errors such as omissions, duplications, and mistakes in reporting, recording, and processing the data. The effects of these errors cannot be measured directly. They are minimized through rigid quality controls in the data collection process and through a careful review of all reported data for consistency and reasonableness.

To assist users in evaluating the reliability of estimates in this report, the "**Root Mean Square Error**" is shown for selected items in the table on the following page. The "Root Mean Square Error" is a statistical measure based on past performance and is computed using the differences between first and latest estimates. The "Root Mean Square Error" for cattle on feed inventory estimates over the past 24 months is 0.0 percent. This means that chances are 2 out of 3 that the final estimate will not be above or below the current estimate of 11.2 million head by more than 0.0 percent. Chances are 9 out of 10 that the difference will not exceed 0.1 percent.

The table on the following page shows a 24 month record of the range of differences between first and latest estimates for selected items. Using estimates of number on feed as an example, changes between the first estimate and the latest estimate during the past 24 months have averaged 1,000 head, ranging from 0 to 15,000 head. During this period the initial estimate has been above the latest estimate 1 time and has been below the latest estimate 3 times. This does not imply that the initial estimate is likely to understate or overstate final inventory.

## Reliability of Monthly Cattle on Feed Estimates

[Based on data for the past 24 months]

Item	Root mean square error	90 percent confidence level	Difference between first and latest estimate				
			Average	Smallest	Largest	Months	
						Below latest	Above latest
	(percent)	(percent)	(1,000)	(1,000)	(1,000)	(number)	(number)
On feed .....	0.0	0.1	1	0	15	3	1
Placements .....	0.3	0.4	3	0	15	7	2
Marketings .....	0.2	0.4	1	0	15	4	1

## Information Contacts

Listed below are the commodity specialists in the Livestock Branch of the National Agricultural Statistics Service to contact for additional information. E-mail inquiries may be sent to [nass@usda.gov](mailto:nass@usda.gov).

Travis Averill, Chief, Livestock Branch .....	(202) 692-0069
Scott Hollis, Head, Livestock Section .....	(202) 690-2424
Sherry Bertramsen – Livestock Slaughter .....	(202) 690-8632
Ryan Cowen – Cattle, Cattle on Feed .....	(202) 720-3040
Anthony Fischer – Hogs and Pigs .....	(202) 720-3106
Logan Hartley-Sanguinett – Sheep and Goats .....	(202) 690-3236
Mike Miller – Milk Production and Milk Cows .....	(202) 720-3278
Suzanne Richards – Dairy Products .....	(202) 720-4448



## Access to NASS Reports

For your convenience, you may access NASS reports and products the following ways:

- All reports are available electronically, at no cost, on the NASS web site: [www.nass.usda.gov](http://www.nass.usda.gov)
- Both national and state specific reports are available via a free e-mail subscription. To set-up this free subscription, visit [www.nass.usda.gov](http://www.nass.usda.gov) and click on “National” or “State” in upper right corner above “search” box to create an account and select the reports you would like to receive.
- Cornell’s Mann Library has launched a new website housing NASS’s and other agency’s archived reports. The new website, <https://usda.library.cornell.edu>. All email subscriptions containing reports will be sent from the new website, <https://usda.library.cornell.edu>. To continue receiving the reports via e-mail, you will have to go to the new website, create a new account and re-subscribe to the reports. If you need instructions to set up an account or subscribe, they are located at: <https://usda.library.cornell.edu/help>. You should whitelist [notifications@usda-esmis.library.cornell.edu](mailto:notifications@usda-esmis.library.cornell.edu) in your email client to avoid the emails going into spam/junk folders.

For more information on NASS surveys and reports, call the NASS Agricultural Statistics Hotline at (800) 727-9540, 7:30 a.m. to 4:00 p.m. ET, or e-mail: [nass@usda.gov](mailto:nass@usda.gov).

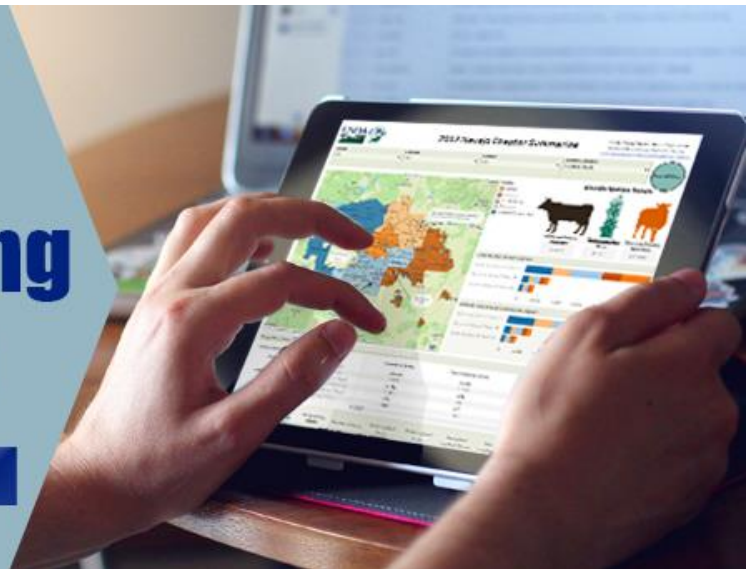
The U.S. Department of Agriculture (USDA) prohibits discrimination against its customers, employees, and applicants for employment on the basis of race, color, national origin, age, disability, sex, gender identity, religion, reprisal, and where applicable, political beliefs, marital status, familial or parental status, sexual orientation, or all or part of an individual's income is derived from any public assistance program, or protected genetic information in employment or in any program or activity conducted or funded by the Department. (Not all prohibited bases will apply to all programs and/or employment activities.)

If you wish to file a Civil Rights program complaint of discrimination, complete the [USDA Program Discrimination Complaint Form](#) (PDF), found online at [www.ascr.usda.gov/filing-program-discrimination-complaint-usda-customer](http://www.ascr.usda.gov/filing-program-discrimination-complaint-usda-customer), or at any USDA office, or call (866) 632-9992 to request the form. You may also write a letter containing all of the information requested in the form. Send your completed complaint form or letter to us by mail at U.S. Department of Agriculture, Director, Office of Adjudication, 1400 Independence Avenue, S.W., Washington, D.C. 20250-9410, by fax (202) 690-7442 or email at [program.intake@usda.gov](mailto:program.intake@usda.gov).

# 2021 USDA Fall Virtual Data Users' Meeting

Oct. 13 & 14, 2021

**FREE AND OPEN TO THE PUBLIC**



## USDA Fall Data Users' Meeting

**Virtual Meeting**

**October 13 & 14, 2021**

**12:00 – 3:00 pm ET**

USDA's National Agricultural Statistics Service (NASS) will hold a virtual meeting for users of U.S. domestic and international agriculture data. Along with NASS, the 2021 Fall Data Users' Meeting will headline the Agricultural Marketing Service, Economic Research Service, Farm Service Agency, Foreign Agricultural Service, World Agricultural Outlook Board – and the Census Bureau's Foreign Trade Division. Representatives will provide agency updates, answer questions, and listen to concerns from data users.

### Abbreviated Agenda

#### Day 1 – October 13

Agency Updates– *All agencies*

AMS Transportation & Marketing Program - *Agricultural Marketing Service*

NASS Milk Production Program - *National Agricultural Statistics Service*

Showcasing ERS Data and New Initiatives - *Economic Research Service*

Foreign Production, Trade, and Import/Export Data - *World Agricultural Outlook Board, Foreign Agricultural Service, and U.S. Census Bureau*

#### Day 2 – October 14

Open Forum – *All agencies*

Climate Information for Informed Decision Making - *World Agricultural Outlook Board*

AMS Market News - *Agricultural Marketing Service*

NASS Modernization - *National Agricultural Statistics Service*

GADAS Demo – *Foreign Agricultural Service*

For registration details or additional information about the Data Users' Meeting, see the meeting page on the NASS website ([https://www.nass.usda.gov/Education\\_and\\_Outreach/Meeting/index.php](https://www.nass.usda.gov/Education_and_Outreach/Meeting/index.php)).