



United States  
Department of  
Agriculture

National  
Agricultural  
Statistics  
Service



Sp Sy 9 (09)

# Farm Computer Usage and Ownership

## August 2009

# USDA





## DSL Internet Access Method Up 9 Percentage Points

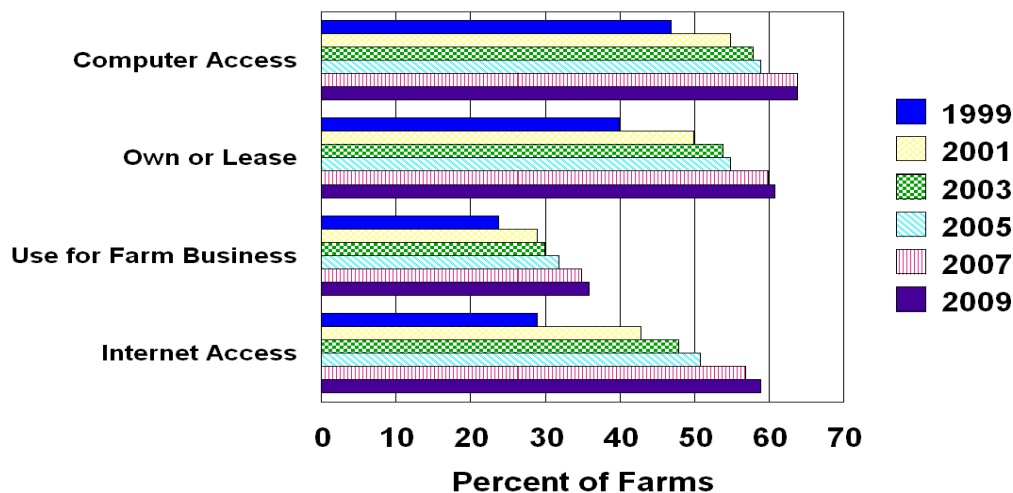
DSL was the most common method of accessing the Internet, with 36 percent of U.S. farms using it, up from 27 percent in 2007. In 2007, dialup was the most common method of accessing the internet. Dialup access dropped from 47 percent in 2007 to 23 percent in 2009. Satellite and wireless were each reported as the primary internet access methods on 13 percent of those U.S. farms with Internet access. Cable was reported as the primary access method on 11 percent of the farms.

A total of 59 percent of U.S. farms now have Internet access, compared with 57 percent in 2007. Sixty-four percent of farms have access to a computer in 2009, the same level as 2007. The proportion of U.S. farms owning or leasing a computer in 2009, at 61 percent, was up 1 percentage point from 2007. Farms using computers for their farm business increased 1 percentage point from 2007 to 36 percent in 2009.

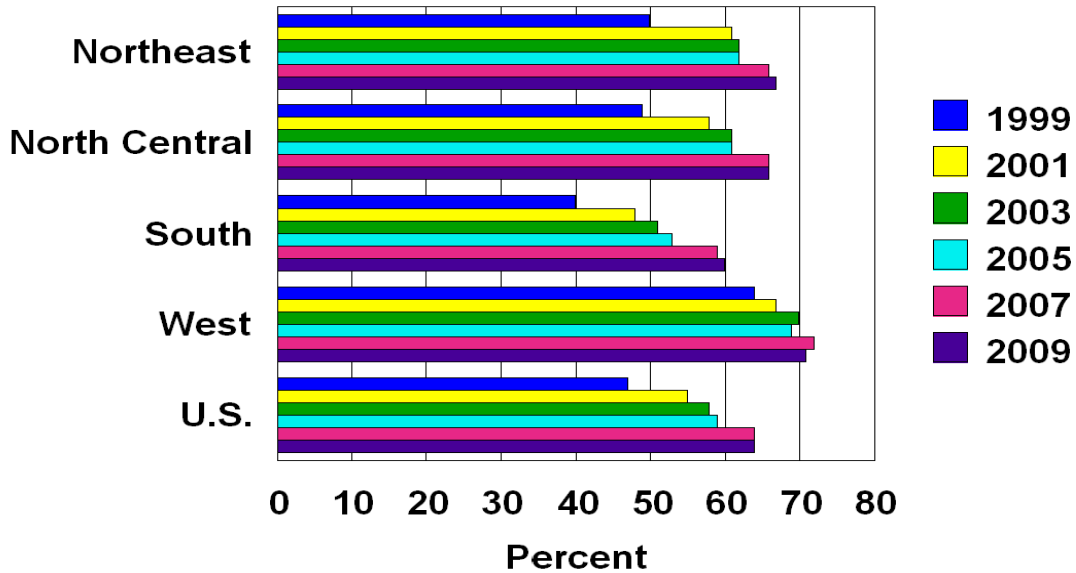
In 2009, 81 percent of U.S. farms with sales and government payments of \$250,000 or more have access to a computer, 79 percent own or lease a computer, 69 percent are using a computer for their farm business, and 76 percent have Internet access. For farms with sales and government payments between \$100,000 and \$249,999, the figures are: 70 percent have access to a computer, 67 percent own or lease a computer, 52 percent are using a computer for their farm business, and 63 percent have Internet access. Of the farms with sales and government payments between \$10,000 and \$99,999, 62 percent reported having computer access, 59 percent own or lease a computer, 38 percent use a computer for their farm business, and 57 percent have Internet access.

For crop farms, 65 percent have computer access and 40 percent use a computer for their farm business in 2009, up 1 and 3 percentage points from 2007, respectively. Internet access for crop farms has increased to 60 percent in 2009, compared with 56 percent in 2007. In 2009, a total of 63 percent livestock farms have computer access and 58 percent have Internet access.

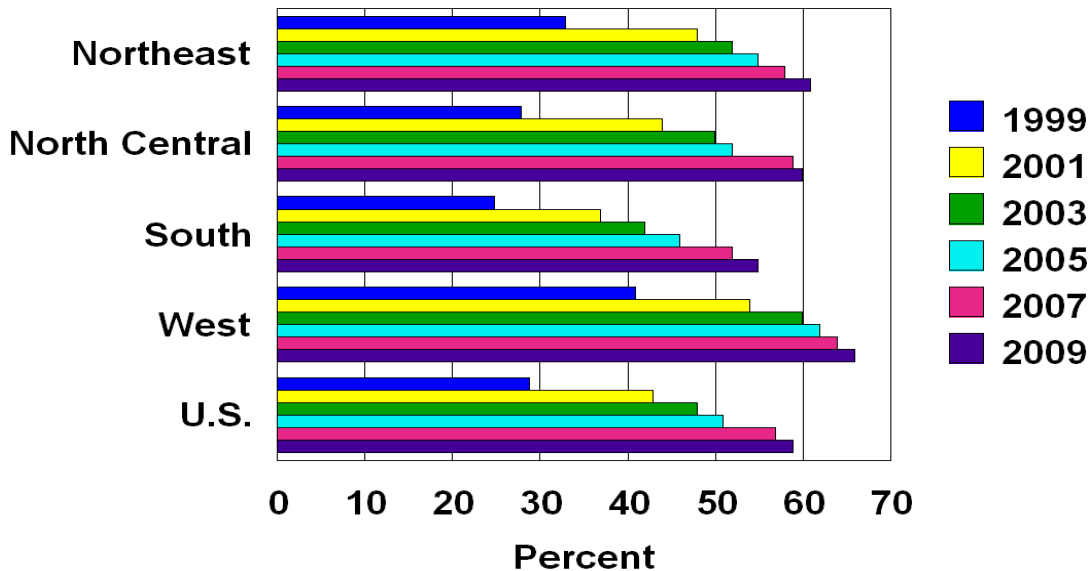
## Farm Computer Usage and Ownership United States 1999- 2009



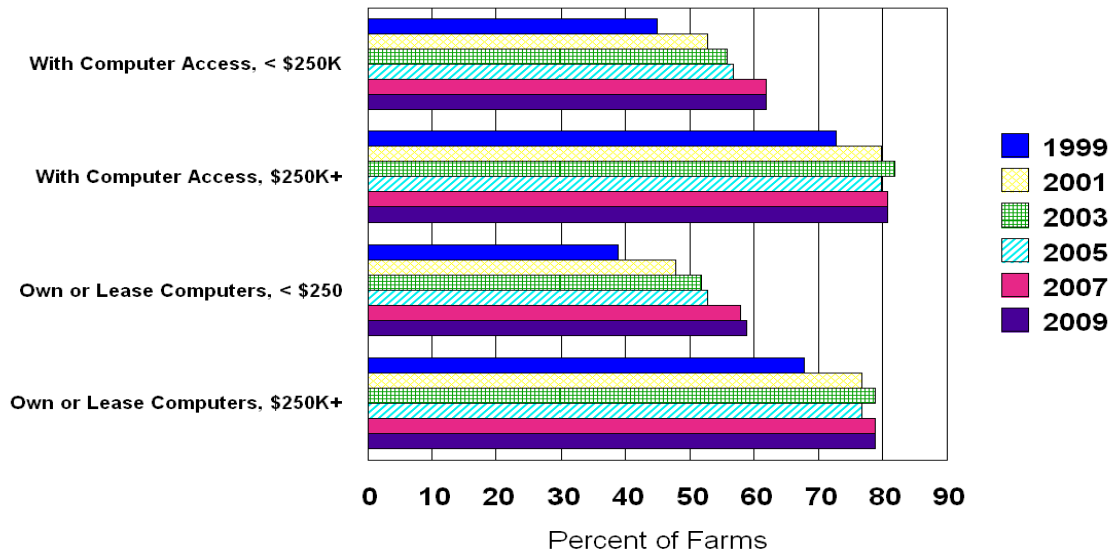
## Percent of Farms With Computer Access By Region & U.S., 1999-2009



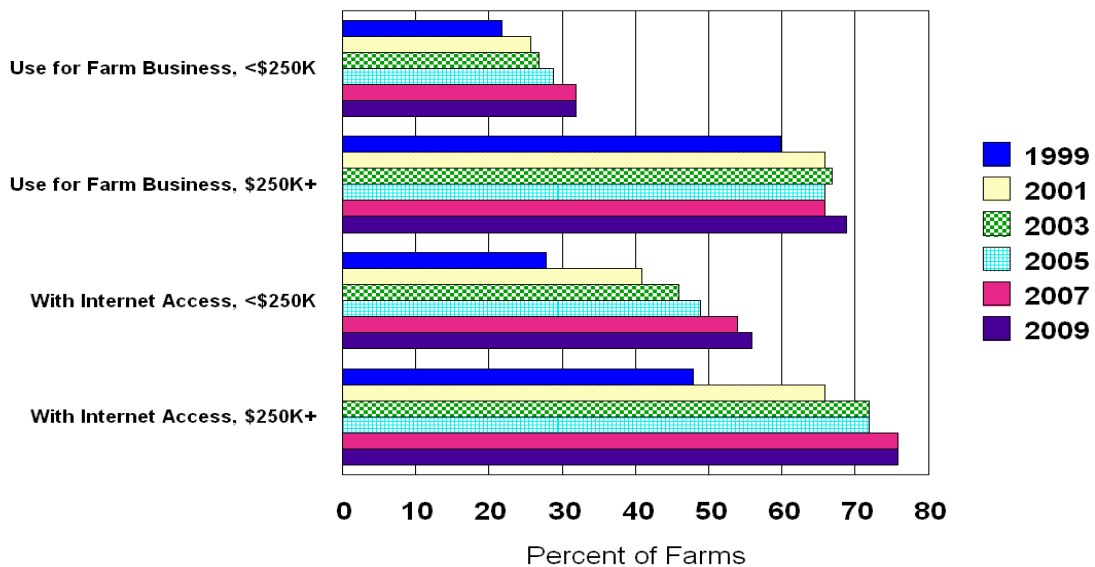
## Percent of Farms With Internet Access By Region & U.S., 1999-2009



## Computer Access and Ownership By Economic Class, 1999-2009, U.S. Level



## Farm Business Usage and Internet Access By Economic Class, 1999-2009



**Farm Computer Usage:  
By State and United States, 2005, 2007, and 2009**

State	Farms					
	With Computer Access			That Own or Lease Computers		
	2005	2007	2009	2005	2007	2009
	<i>Percent</i>	<i>Percent</i>	<i>Percent</i>	<i>Percent</i>	<i>Percent</i>	<i>Percent</i>
AL	48	55	57	47	54	54
AZ <sup>1</sup>	60	52	45	60	50	39
AR	50	59	65	48	56	61
CA	58	71	69	54	66	68
CO	68	74	74	66	73	73
FL	61	61	71	60	60	61
GA	42	57	54	38	55	52
ID	77	83	80	75	81	79
IL	64	67	66	60	66	64
IN	58	64	68	56	62	65
IA	64	70	69	61	68	67
KS	57	68	69	54	64	67
KY	36	60	57	34	57	54
LA	51	51	53	46	49	51
MD <sup>2</sup>	58	64	62	56	63	61
MI	62	64	69	57	58	62
MN	65	71	71	60	66	68
MS	45	51	53	42	47	50
MO	55	56	54	50	53	53
MT	75	72	73	73	70	72
NE	65	69	69	62	67	68
NH <sup>3</sup>	78	78	83	76	75	78
NJ	60	69	76	60	63	75
NM	62	53	51	62	53	50
NY	63	67	71	59	63	68
NC	59	61	68	56	56	66
ND	65	67	65	63	64	63
OH	56	62	59	53	60	57
OK	55	55	60	50	54	60
OR	80	82	79	78	78	75
PA	55	58	55	53	54	51
SC	52	62	59	47	61	58
SD	66	70	68	62	69	66
TN	55	58	55	45	46	46
TX	58	62	61	55	55	58
UT	72	70	71	64	63	66
VA	65	62	68	60	59	65
WA	70	75	81	67	72	74
WV	60	63	64	55	54	60
WI	64	69	73	60	60	70
WY	79	76	81	71	74	80
US <sup>4</sup>	59	64	64	55	60	61

<sup>1</sup> Includes AZ and NV.

<sup>2</sup> Includes DE and MD.

<sup>3</sup> Includes CT, ME, MA, NH, RI, and VT.

<sup>4</sup> Excludes AK and HI.

**Farm Computer Usage:  
By State and United States, 2005, 2007, and 2009 (cont.)**

State	Farms					
	Using Computers for Farm Business			With Internet Access		
	2005	2007	2009	2005	2007	2009
	<i>Percent</i>	<i>Percent</i>	<i>Percent</i>	<i>Percent</i>	<i>Percent</i>	<i>Percent</i>
AL	25	24	25	40	50	52
AZ <sup>1</sup>	29	33	15	50	45	40
AR	24	32	32	44	52	56
CA	38	42	44	52	66	66
CO	41	40	44	62	70	68
FL	39	37	38	57	56	65
GA	19	26	23	36	53	50
ID	47	50	42	68	66	68
IL	40	40	44	56	60	61
IN	35	38	42	51	57	61
IA	42	42	47	55	63	62
KS	35	39	42	49	57	64
KY	17	24	26	30	51	48
LA	20	25	26	46	49	46
MD <sup>2</sup>	31	36	34	48	61	59
MI	35	34	41	54	59	61
MN	35	38	46	56	62	65
MS	23	22	22	37	44	47
MO	30	29	29	45	52	49
MT	45	45	52	70	63	69
NE	41	44	50	52	63	62
NH <sup>3</sup>	52	50	47	65	67	75
NJ	45	45	46	60	63	75
NM	20	20	31	55	48	45
NY	34	36	44	55	63	66
NC	30	32	37	52	54	63
ND	41	44	49	58	61	61
OH	29	32	39	46	58	55
OK	28	32	32	48	53	57
OR	50	50	44	70	72	69
PA	27	29	27	47	51	48
SC	25	36	33	44	48	46
SD	40	40	45	55	64	62
TN	20	24	22	45	50	47
TX	27	33	30	51	52	57
UT	40	50	36	56	59	65
VA	28	28	32	55	54	67
WA	40	50	50	66	69	77
WV	31	32	30	51	47	61
WI	34	38	41	56	58	67
WY	35	43	40	77	66	80
US <sup>4</sup>	32	35	36	51	57	59

<sup>1</sup> Includes AZ and NV.

<sup>2</sup> Includes DE and MD.

<sup>3</sup> Includes CT, ME, MA, NH, RI, and VT.

<sup>4</sup> Excludes AK and HI.

**Use of Internet by State  
and United States, 2005, 2007, and 2009**

State	Farms					
	Purchase Agricultural Inputs Over Internet <sup>1</sup>			Conduct Agricultural Marketing Activities Over Internet <sup>2</sup>		
	2005	2007	2009	2005	2007	2009
	<i>Percent</i>	<i>Percent</i>	<i>Percent</i>	<i>Percent</i>	<i>Percent</i>	<i>Percent</i>
AL	7	8	8	6	5	7
AZ <sup>3</sup>	8	13	6	9	8	4
AR	5	9	9	5	4	6
CA	12	15	19	10	11	13
CO	12	9	10	13	8	11
FL	16	19	22	15	10	15
GA	4	9	6	4	5	8
ID	10	12	18	11	10	15
IL	8	10	11	13	14	14
IN	10	14	18	9	18	17
IA	6	9	12	12	16	19
KS	7	10	14	7	8	10
KY	7	8	9	4	6	8
LA	4	6	8	6	3	7
MD <sup>4</sup>	15	19	19	6	8	16
MI	11	15	17	8	7	11
MN	9	11	12	12	12	18
MS	6	5	8	4	4	5
MO	6	7	7	8	5	7
MT	10	13	13	12	16	20
NE <sup>5</sup>	7	8	12	10	11	21
NH <sup>5</sup>	25	23	26	15	15	15
NJ	25	27	30	14	15	18
NM	7	7	14	6	5	8
NY	15	19	25	7	7	9
NC	9	15	16	8	11	12
ND	6	9	12	10	10	13
OH	9	12	14	11	11	16
OK	8	11	12	6	11	11
OR	17	21	16	14	12	15
PA	11	11	12	7	7	8
SC	9	15	10	6	15	7
SD	7	7	10	9	12	18
TN	6	7	9	5	7	7
TX	8	9	11	7	8	8
UT	15	17	12	15	17	8
VA	13	13	10	8	7	6
WA	15	26	23	15	14	16
WV	14	14	15	4	4	4
WI	9	12	13	10	12	12
WY	12	18	13	8	8	15
US <sup>6</sup>	9	11	13	9	10	11

<sup>1</sup> Agricultural inputs include seed, fertilizer, chemicals, veterinarian supplies, feed, machinery, replacement parts, farm supplies, office equipment, etc.

<sup>2</sup> Agricultural marketing activities include direct sales of commodities, on-line crop and livestock auctions, on-line market advisory services, commodity price tracking, etc.

<sup>3</sup> Includes AZ and NV.

<sup>4</sup> Includes DE and MD.

<sup>5</sup> Includes CT, ME, MA, NH, RI, and VT.

<sup>6</sup> Excludes AK and HI.



**Internet Access of Reports, Services, and Web sites  
By State and United States, 2005, 2007, and 2009<sup>1</sup>**

State	Farms								
	Access USDA/NASS Reports Over Internet			Access Other USDA Reports/Services Over Internet			Access Other Federal Government Web sites Over Internet		
	2005	2007	2009	2005	2007	2009	2005	2007	2009
<i>Percent</i>	<i>Percent</i>	<i>Percent</i>	<i>Percent</i>	<i>Percent</i>	<i>Percent</i>	<i>Percent</i>	<i>Percent</i>	<i>Percent</i>	<i>Percent</i>
AL	6	5	3	9	6	5	6	6	7
AZ <sup>2</sup>	5	2	3	11	11	4	8	6	9
AR	6	4	5	8	6	12	9	13	14
CA	3	7	8	11	13	11	12	13	14
CO	6	6	10	10	9	12	18	11	11
FL	5	8	5	11	14	9	14	16	9
GA	2	2	3	5	7	6	5	6	7
ID	8	7	11	18	15	22	23	18	22
IL	9	11	10	17	16	14	13	12	10
IN	5	7	9	11	13	12	10	14	13
IA	8	10	11	15	15	18	12	11	15
KS	6	9	9	10	12	14	12	13	16
KY	2	3	5	5	7	7	4	5	7
LA	2	2	3	6	8	7	6	4	5
MD <sup>3</sup>	2	6	4	9	12	12	15	22	19
MI	4	9	7	11	14	12	11	14	15
MN	6	7	10	12	12	17	10	10	15
MS	3	3	5	7	7	7	7	8	6
MO	4	5	5	10	10	9	7	9	8
MT	6	6	11	16	16	17	23	18	24
NE	8	7	8	17	14	17	14	13	14
NH <sup>4</sup>	6	5	6	15	18	14	20	17	27
NJ	8	9	13	9	13	17	13	17	18
NM	5	6	7	9	4	10	19	5	13
NY	5	5	9	11	8	19	16	18	24
NC	5	6	5	10	12	14	12	14	14
ND	10	7	14	15	15	18	12	15	11
OH	5	3	6	8	8	10	8	8	13
OK	6	6	6	10	10	11	14	16	11
OR	5	4	6	12	11	14	18	15	21
PA	6	3	5	11	6	9	13	10	13
SC	6	4	6	11	8	6	13	11	6
SD	7	6	7	14	13	16	15	12	16
TN	5	5	8	8	8	8	8	8	9
TX	5	4	4	9	8	8	11	11	11
UT	9	8	11	20	15	18	18	14	18
VA	4	4	7	9	8	13	13	11	16
WA	3	7	6	13	15	16	16	18	23
WV	7	7	7	12	10	11	14	18	14
WI	7	8	10	14	14	13	17	16	16
WY	2	7	2	7	11	12	13	23	15
US <sup>5</sup>	5	6	7	11	11	12	12	12	13

<sup>1</sup> Reference period for access and usage of USDA reports, research information, and services is the last 12 months prior to June 1 of survey year.

<sup>2</sup> Includes AZ and NV.

<sup>3</sup> Includes DE and MD.

<sup>4</sup> Includes CT, ME, MA, NH, RI, and VT.

<sup>5</sup> Excludes AK and HI.

**Conducting Business on the Internet and Usage of Toll-Free Customer Service Numbers By State and United States, 2005, 2007, and 2009**

State	Farms					
	Conduct Business With Any USDA Web site			Conduct Business With Any Other Federal Government Web site		
	2005	2007	2009	2005	2007	2009
	<i>Percent</i>	<i>Percent</i>	<i>Percent</i>	<i>Percent</i>	<i>Percent</i>	<i>Percent</i>
AL	3	2	3	4	2	2
AZ <sup>1</sup>	4	6	2	3	1	2
AR	3	2	2	3	1	4
CA	5	6	7	5	5	5
CO	4	6	2	7	3	5
FL	4	4	4	9	2	4
GA	2	3	3	1	1	2
ID	6	3	9	6	4	10
IL	5	7	4	3	4	4
IN	4	5	6	2	3	4
IA	6	5	6	4	2	3
KS	4	3	6	3	3	4
KY	2	2	4	2	1	3
LA	1	2	2	1	1	3
MD <sup>2</sup>	5	5	2	4	4	10
MI	3	6	4	2	2	4
MN	6	5	7	4	3	5
MS	1	3	3	1	3	2
MO	5	2	3	3	3	2
MT	4	3	6	2	3	4
NE	5	4	4	4	2	4
NH <sup>3</sup>	9	3	9	6	7	9
NJ	7	6	9	6	3	4
NM	6	1	7	3	1	7
NY	1	1	3	*	4	1
NC	3	5	5	5	4	5
ND	6	5	6	3	3	6
OH	5	3	5	1	2	3
OK	3	4	6	3	5	6
OR	7	5	7	7	4	7
PA	3	2	3	3	3	4
SC	2	2	2	*	1	*
SD	5	4	4	4	3	3
TN	3	2	4	4	1	5
TX	3	4	3	3	4	4
UT	7	5	9	5	5	4
VA	3	2	7	4	2	3
WA	4	7	9	6	11	11
WV	1	1	2	*	1	*
WI	5	3	5	6	3	4
WY	5	5	6	*	6	4
US <sup>4</sup>	4	4	5	3	3	4

\*Less than one percent.

<sup>1</sup> Includes AZ and NV.

<sup>2</sup> Includes DE and MD.

<sup>3</sup> Includes CT, ME, MA, NH, RI, and VT.

<sup>4</sup> Excludes AK and HI.

**Conducting Business on the Internet and Usage of Toll-Free Customer Service Numbers By State and United States, 2005, 2007, and 2009**

State	Farms					
	Use Any USDA Toll-Free Customer Service Number			Conduct Business With Any Non-Agricultural Web site		
	2005	2007	2009	2005	2007	2009
	<i>Percent</i>	<i>Percent</i>	<i>Percent</i>	<i>Percent</i>	<i>Percent</i>	<i>Percent</i>
AL	4	2	3	16	14	24
AZ <sup>1</sup>	3	8	2	26	24	10
AR	2	2	2	21	18	27
CA	3	4	4	31	32	37
CO	5	2	2	38	27	33
FL	6	5	3	36	32	37
GA	3	2	2	11	17	13
ID	5	1	4	41	49	52
IL	5	6	3	29	30	36
IN	2	3	5	24	38	42
IA	4	2	3	28	28	33
KS	8	3	6	28	31	32
KY	3	2	3	13	13	23
LA	1	3	2	18	24	21
MD <sup>2</sup>	5	5	9	25	38	33
MI	7	3	5	24	36	36
MN	4	5	7	27	33	39
MS	4	5	2	17	17	22
MO	2	3	3	17	22	23
MT	5	7	4	43	38	48
NE	5	5	7	29	31	40
NH <sup>3</sup>	3	13	5	48	41	56
NJ	11	3	6	27	41	54
NM	3	*	3	40	21	26
NY	3	4	6	31	27	47
NC	3	6	6	26	25	35
ND	4	2	3	25	34	37
OH	7	2	6	26	20	26
OK	5	5	6	20	27	30
OR	6	2	4	41	31	51
PA	5	3	5	24	24	30
SC	6	9	1	22	22	13
SD	6	8	5	28	28	40
TN	5	4	3	19	18	22
TX	5	3	2	24	28	29
UT	8	2	5	45	36	42
VA	4	5	4	26	26	32
WA	6	7	9	41	45	56
WV	9	5	4	20	30	26
WI	6	5	5	35	36	41
WY	8	8	2	36	46	36
US <sup>4</sup>	5	4	4	26	28	33

\*Less than one percent.

<sup>1</sup> Includes AZ and NV.

<sup>2</sup> Includes DE and MD.

<sup>3</sup> Includes CT, ME, MA, NH, RI, and VT.

<sup>4</sup> Excludes AK and HI.

**Primary Method of Internet Access <sup>1</sup>**  
**By State and United States, 2005, 2007, and 2009**

State	Dialup			DSL			Cable		
	2005	2007	2009	2005	2007	2009	2005	2007	2009
	<i>Percent</i>	<i>Percent</i>	<i>Percent</i>	<i>Percent</i>	<i>Percent</i>	<i>Percent</i>	<i>Percent</i>	<i>Percent</i>	<i>Percent</i>
AL	84	55	37	3	23	28	12	10	13
AZ <sup>2</sup>	58	47	36	10	17	17	3	7	10
AR	70	56	17	22	22	45	4	4	11
CA	57	36	11	19	21	32	7	12	21
CO	62	36	12	12	16	14	2	5	7
FL	53	28	21	12	50	54	24	11	4
GA	71	27	17	13	56	52	8	9	21
ID	73	42	18	10	24	37	1	3	2
IL	72	46	20	11	20	22	4	4	6
IN	86	54	26	4	19	28	3	7	8
IA	70	45	19	17	30	43	3	4	5
KS	62	41	14	17	30	35	9	9	11
KY	62	40	29	15	32	40	5	8	6
LA	63	53	22	21	23	42	7	8	12
MD <sup>3</sup>	68	52	25	10	25	24	15	10	23
MI	68	60	29	7	20	27	10	11	13
MN	67	45	22	17	30	44	2	2	3
MS	79	57	35	8	22	35	1	5	6
MO	75	55	33	11	31	34	2	2	5
MT	70	43	17	17	34	40	1	2	1
NE	64	34	14	14	33	43	5	4	3
NH <sup>4</sup>	62	33	15	12	31	24	7	26	46
NJ	46	22	11	21	35	40	26	30	37
NM	56	28	21	26	41	32	4	3	3
NY	54	44	29	17	18	31	10	21	23
NC	67	40	20	17	35	53	6	11	11
ND	62	35	14	21	40	55	4	8	7
OH	82	52	34	12	20	29	3	10	13
OK	67	41	22	14	30	41	3	5	5
OR	67	52	26	9	15	23	13	13	9
PA	68	54	27	19	31	37	8	6	21
SC	76	55	26	12	29	31	5	6	26
SD	68	38	13	15	35	45	3	3	11
TN	71	62	21	8	13	34	9	8	23
TX	73	52	26	13	24	34	4	4	7
UT	71	31	4	12	27	60	2	6	16
VA	79	65	39	5	17	20	4	8	9
WA	77	34	24	9	38	29	3	8	9
WV	76	53	32	12	19	37	5	11	7
WI	74	52	28	15	32	41	3	3	8
WY	63	55	20	9	23	32	10	5	5
US <sup>5</sup>	69	47	23	13	27	36	6	7	11

<sup>1</sup> Primary method of internet access for those operators who have access to the internet.

<sup>2</sup> Includes AZ and NV.

<sup>3</sup> Includes DE and MD.

<sup>4</sup> Includes CT, ME, MA, NH, RI, and VT.

<sup>5</sup> Excludes AK and HI.

**Primary Method of Internet Access <sup>1</sup>**  
**By State and United States, 2005, 2007, and 2009**

State	Satellite			Wireless			Other/ Unknown		
	2005	2007	2009	2005	2007	2009	2005	2007	2009
	<i>Percent</i>	<i>Percent</i>	<i>Percent</i>	<i>Percent</i>	<i>Percent</i>	<i>Percent</i>	<i>Percent</i>	<i>Percent</i>	<i>Percent</i>
AL	1	7	11	*	1	7	*	4	4
AZ <sup>2</sup>	11	21	20	15	5	8	3	3	9
AR	2	11	13	*	2	10	2	5	4
CA	6	11	13	5	13	19	6	7	4
CO	8	14	32	8	15	28	8	14	7
FL	5	5	18	2	3	3	4	3	*
GA	1	5	5	1	0	2	6	3	3
ID	6	10	21	4	14	16	6	7	6
IL	3	9	16	6	17	31	4	4	5
IN	4	8	14	1	10	22	2	2	2
IA	1	7	12	7	8	12	2	6	9
KS	4	10	22	4	9	15	4	1	3
KY	3	12	6	3	3	8	12	5	11
LA	2	9	12	2	2	10	5	5	2
MD <sup>3</sup>	1	3	8	2	2	12	4	8	8
MI	5	1	6	2	6	20	8	2	5
MN	2	5	9	5	15	18	7	3	4
MS	3	10	15	*	1	5	9	5	4
MO	5	5	14	1	3	10	6	4	4
MT	9	12	28	1	8	11	2	1	3
NE	4	10	15	8	13	22	5	6	3
NH <sup>4</sup>	3	3	9	4	1	1	12	6	5
NJ	0	5	3	*	0	4	7	8	5
NM	5	3	20	9	21	16	0	4	8
NY	6	4	3	2	4	6	11	9	8
NC	2	7	5	2	3	8	6	4	3
ND	3	9	11	5	6	11	5	2	2
OH	1	6	9	1	7	12	1	5	3
OK	6	10	17	3	10	13	7	4	2
OR	5	5	17	4	11	23	2	4	2
PA	2	1	5	*	1	5	3	7	5
SC	7	5	7	0	1	8	*	4	2
SD	4	4	9	3	14	19	7	6	3
TN	2	3	11	*	1	7	10	13	4
TX	4	9	17	3	8	13	3	3	3
UT	1	12	6	6	10	11	8	14	3
VA	1	7	15	1	3	12	10	0	5
WA	6	11	15	3	5	20	2	4	3
WV	*	6	16	1	1	4	6	10	4
WI	1	4	8	2	3	11	5	6	4
WY	10	9	28	7	7	12	1	1	3
US <sup>5</sup>	4	7	13	3	7	13	5	5	4

\*Less than one percent.

<sup>1</sup> Primary method of internet access for those operators who have access to the internet.

<sup>2</sup> Includes AZ and NV.

<sup>3</sup> Includes DE and MD.

<sup>4</sup> Includes CT, ME, MA, NH, RI, and VT.

<sup>5</sup> Excludes AK and HI.

**Farm Computer Usage: by Economic Class <sup>1</sup>, Type of Farm,  
Region and United States, 2005, 2007, and 2009**

Region	Farms					
	With Computer Access			That Own or Lease Computers		
	2005	2007	2009	2005	2007	2009
	<i>Percent</i>	<i>Percent</i>	<i>Percent</i>	<i>Percent</i>	<i>Percent</i>	<i>Percent</i>
Northeast <sup>2</sup>	62	66	67	60	62	63
\$1,000-9,999	60	65	67	58	62	63
\$10,000-99,999	62	62	67	58	58	62
\$100,000 & Over	70	67	66	67	65	64
\$100,000-249,999	67	59	56	63	58	55
\$250,000 & Over	75	75	76	73	71	72
Crop Farms	60	65	66	59	60	60
Livestock Farms	64	67	67	61	64	65
North Central <sup>3</sup>	61	66	66	57	62	64
\$1,000-9,999	58	62	63	53	59	60
\$10,000-99,999	56	61	60	52	55	58
\$100,000 & Over	76	78	77	74	74	75
\$100,000-249,999	71	70	70	69	67	68
\$250,000 & Over	82	83	81	80	80	80
Crop Farms	62	66	68	58	62	65
Livestock Farms	60	66	65	56	62	62
South <sup>4</sup>	53	59	60	49	55	57
\$1,000-9,999	49	55	57	46	53	54
\$10,000-99,999	55	59	61	50	54	57
\$100,000 & Over	73	75	75	69	71	72
\$100,000-249,999	68	68	70	63	64	66
\$250,000 & Over	77	78	78	74	75	75
Crop Farms	53	58	59	50	54	56
Livestock Farms	53	59	60	49	55	57
West <sup>5</sup>	69	72	71	66	69	69
\$1,000-9,999	69	68	67	66	65	66
\$10,000-99,999	66	72	69	62	69	66
\$100,000 & Over	76	83	82	74	80	79
\$100,000-249,999	73	79	81	71	74	78
\$250,000 & Over	78	85	82	76	83	80
Crop Farms	67	69	69	65	67	67
Livestock Farms	71	74	72	67	70	71
US <sup>6</sup>	59	64	64	55	60	61
\$1,000-9,999	55	60	60	52	57	57
\$10,000-99,999	58	64	62	52	59	59
\$100,000 & Over	75	75	76	72	68	75
\$100,000-249,999	70	68	70	67	68	67
\$250,000 & Over	80	81	81	77	79	79
Crop Farms	60	64	65	57	61	62
Livestock Farms	58	64	63	54	60	60

<sup>1</sup> Economic class refers to sales and government payments received during the previous year.

<sup>2</sup> Includes CT, ME, MA, NH, NJ, NY, PA, RI, and VT.

<sup>3</sup> Includes IL, IN, IA, KS, MI, MN, MO, NE, ND, OH, SD, and WI.

<sup>4</sup> Includes AL, AR, DE, FL, GA, KY, LA, MD, MS, NC, OK, SC, TN, TX, VA, and WV.

<sup>5</sup> Includes AZ, CA, CO, ID, MT, NV, NM, OR, UT, WA, and WY.

<sup>6</sup> Excludes AK and HI.

**Farm Computer Usage: by Economic Class <sup>1</sup>, Type of Farm,  
Region and United States, 2005, 2007, and 2009 (cont.)**

Region	Farms					
	Using Computers for Farm Business			With Internet Access		
	2005	2007	2009	2005	2007	2009
	<i>Percent</i>	<i>Percent</i>	<i>Percent</i>	<i>Percent</i>	<i>Percent</i>	<i>Percent</i>
Northeast <sup>2</sup>	36	37	37	55	58	61
\$1,000-9,999	26	27	32	54	59	61
\$10,000-99,999	45	45	42	55	58	62
\$100,000 & Over	56	52	51	59	58	57
\$100,000-249,999	50	40	37	53	49	46
\$250,000 & Over	65	63	64	68	67	68
Crop Farms	37	37	35	54	57	59
Livestock Farms	36	37	38	56	60	62
North Central <sup>3</sup>	36	38	42	52	59	60
\$1,000-9,999	24	24	27	50	54	56
\$10,000-99,999	34	36	40	45	54	55
\$100,000 & Over	59	60	63	67	73	71
\$100,000-249,999	50	52	54	60	64	63
\$250,000 & Over	68	69	70	74	79	77
Crop Farms	37	39	45	53	58	62
Livestock Farms	35	35	37	50	61	58
South <sup>4</sup>	25	30	29	46	52	55
\$1,000-9,999	18	24	22	43	50	52
\$10,000-99,999	28	33	35	45	51	56
\$100,000 & Over	55	55	58	62	66	69
\$100,000-249,999	48	48	50	55	60	65
\$250,000 & Over	62	61	65	69	70	72
Crop Farms	26	30	29	46	50	54
Livestock Farms	25	30	29	45	53	55
West <sup>5</sup>	40	44	42	62	64	66
\$1,000-9,999	31	36	32	62	61	64
\$10,000-99,999	43	46	41	57	63	63
\$100,000 & Over	62	61	67	70	77	75
\$100,000-249,999	56	52	61	63	71	72
\$250,000 & Over	67	68	71	75	81	78
Crop Farms	42	43	44	60	63	66
Livestock Farms	39	44	41	64	66	66
US <sup>6</sup>	32	35	36	51	57	59
\$1,000-9,999	22	25	25	48	52	56
\$10,000-99,999	35	36	38	47	55	57
\$100,000 & Over	58	59	61	65	71	70
\$100,000-249,999	51	51	52	59	63	63
\$250,000 & Over	66	66	69	72	76	76
Crop Farms	34	37	40	52	56	60
Livestock Farms	30	33	33	50	57	58

<sup>1</sup> Economic class refers to sales and government payments received during the previous year.

<sup>2</sup> Includes CT, ME, MA, NH, NJ, NY, PA, RI, and VT.

<sup>3</sup> Includes IL, IN, IA, KS, MI, MN, MO, NE, ND, OH, SD, and WI.

<sup>4</sup> Includes AL, AR, DE, FL, GA, KY, LA, MD, MS, NC, OK, SC, TN, TX, VA, and WV.

<sup>5</sup> Includes AZ, CA, CO, ID, MT, NV, NM, OR, UT, WA, and WY.

<sup>6</sup> Excludes AK and HI.

**Use of Internet by Economic Class <sup>1</sup>, Type of Farm,  
Region and United States, 2005, 2007, and 2009**

Region	Farms					
	Purchase Agricultural Inputs Over Internet <sup>2</sup>			Conduct Agricultural Marketing Activities Over Internet <sup>3</sup>		
	2005	2007	2009	2005	2007	2009
	<i>Percent</i>	<i>Percent</i>	<i>Percent</i>	<i>Percent</i>	<i>Percent</i>	<i>Percent</i>
Northeast <sup>4</sup>	16	17	19	9	10	11
\$1,000-9,999	14	14	18	5	5	6
\$10,000-99,999	18	20	17	16	11	13
\$100,000 & Over	20	22	27	16	22	22
\$100,000-249,999	20	24	19	12	16	15
\$250,000 & Over	20	20	37	23	30	32
Crop Farms	17	16	20	8	8	10
Livestock Farms	15	18	19	10	12	11
North Central <sup>5</sup>	8	10	12	10	11	14
\$1,000-9,999	6	7	9	5	5	6
\$10,000-99,999	7	9	11	9	11	12
\$100,000 & Over	12	16	17	20	22	27
\$100,000-249,999	9	14	13	16	18	19
\$250,000 & Over	16	19	21	25	25	32
Crop Farms	8	10	12	11	13	16
Livestock Farms	8	11	13	9	9	12
South <sup>6</sup>	8	10	11	6	7	8
\$1,000-9,999	6	8	9	4	5	5
\$10,000-99,999	8	11	11	7	10	11
\$100,000 & Over	18	20	22	18	18	24
\$100,000-249,999	16	16	19	16	14	21
\$250,000 & Over	19	23	25	21	21	26
Crop Farms	8	10	10	6	8	9
Livestock Farms	8	10	11	7	7	8
West <sup>7</sup>	12	16	16	12	11	13
\$1,000-9,999	9	14	13	7	7	8
\$10,000-99,999	14	15	14	13	11	15
\$100,000 & Over	20	21	23	22	21	24
\$100,000-249,999	17	17	17	19	17	17
\$250,000 & Over	22	24	28	24	24	29
Crop Farms	10	14	15	11	10	15
Livestock Farms	14	17	16	12	12	12
US <sup>8</sup>	9	11	13	9	10	11
\$1,000-9,999	7	9	10	5	5	6
\$10,000-99,999	9	11	12	9	10	12
\$100,000 & Over	16	18	20	19	20	25
\$100,000-249,999	13	15	15	16	16	19
\$250,000 & Over	18	21	24	23	24	31
Crop Farms	9	11	12	9	10	14
Livestock Farms	9	12	13	8	9	10

<sup>1</sup> Economic class refers to sales and government payments received during the previous year.

<sup>2</sup> Agricultural inputs include seed, fertilizer, chemicals, veterinarian supplies, feed, machinery, replacement parts, farm supplies, office equipment, etc.

<sup>3</sup> Agricultural marketing activities include direct sales of commodities, on-line crop and livestock auctions, on-line market advisory services, commodity price tracking, etc.

<sup>4</sup> Includes CT, ME, MA, NH, NJ, NY, PA, RI, and VT.

<sup>5</sup> Includes IL, IN, IA, KS, MI, MN, MO, NE, ND, OH, SD, and WI.

<sup>6</sup> Includes AL, AR, DE, FL, GA, KY, LA, MD, MS, NC, OK, SC, TN, TX, VA, and WV.

<sup>7</sup> Includes AZ, CA, CO, ID, MT, NV, NM, OR, UT, WA, and WY.

<sup>8</sup> Excludes AK and HI.



**Internet Access of Reports, Services, and Web sites by Economic Class <sup>1</sup>,  
Type of Farm, Region and United States, 2005, 2007, and 2009**

State	Farms								
	Access USDA/NASS Reports Over Internet <sup>2</sup>			Access Other USDA Reports/Services Over Internet <sup>2</sup>			Access Other Federal Government Web sites Over Internet <sup>2</sup>		
	2005	2007	2009	2005	2007	2009	2005	2007	2009
	<i>Percent</i>	<i>Percent</i>	<i>Percent</i>	<i>Percent</i>	<i>Percent</i>	<i>Percent</i>	<i>Percent</i>	<i>Percent</i>	<i>Percent</i>
Northeast <sup>3</sup>	6	5	7	12	10	13	15	14	21
\$1,000-9,999	4	3	6	10	8	11	15	14	21
\$10,000-99,999	8	6	7	13	11	13	15	13	22
\$100,000 & Over	10	7	10	16	14	19	17	15	19
\$100,000-249,999	6	3	7	11	15	13	15	11	13
\$250,000 & Over	17	11	13	24	13	27	20	20	27
Crop Farms	8	6	8	14	11	14	18	15	21
Livestock Farms	4	4	6	10	9	12	13	13	21
North Central <sup>4</sup>	6	8	9	13	13	14	11	12	13
\$1,000-9,999	3	3	4	6	6	7	8	8	9
\$10,000-99,999	7	7	8	12	12	12	11	11	12
\$100,000 & Over	12	15	16	24	25	25	17	19	18
\$100,000-249,999	9	13	12	21	20	19	14	16	14
\$250,000 & Over	15	17	19	28	29	29	21	22	21
Crop Farms	7	9	10	14	15	16	12	12	14
Livestock Farms	6	5	6	11	11	10	11	12	12
South <sup>5</sup>	4	4	5	8	8	9	10	11	10
\$1,000-9,999	3	3	3	5	6	6	9	9	9
\$10,000-99,999	5	5	7	10	10	11	10	11	11
\$100,000 & Over	13	11	12	24	19	21	19	20	19
\$100,000-249,999	11	10	11	19	16	18	17	17	18
\$250,000 & Over	15	13	13	29	23	24	22	22	19
Crop Farms	5	5	5	10	10	10	10	12	11
Livestock Farms	4	4	5	8	8	8	10	10	10
West <sup>6</sup>	5	6	8	13	12	14	17	14	18
\$1,000-9,999	3	3	4	8	7	9	15	11	16
\$10,000-99,999	5	6	6	14	13	12	18	14	15
\$100,000 & Over	11	14	18	24	22	26	22	22	26
\$100,000-249,999	10	11	10	20	17	15	18	17	19
\$250,000 & Over	12	16	25	27	26	35	25	26	32
Crop Farms	5	8	11	14	13	18	18	16	20
Livestock Farms	4	5	5	11	11	9	16	13	16
US <sup>7</sup>	5	6	7	11	11	12	12	12	13
\$1,000-9,999	3	3	4	6	6	7	10	10	11
\$10,000-99,999	6	6	7	12	11	12	12	11	13
\$100,000 & Over	12	13	15	23	22	24	19	19	20
\$100,000-249,999	10	11	11	19	18	18	16	15	16
\$250,000 & Over	14	15	18	28	26	29	22	22	23
Crop Farms	6	8	9	13	13	15	13	13	15
Livestock Farms	5	4	5	9	9	9	11	11	12

<sup>1</sup> Economic class refers to sales and government payments received during the previous year.

<sup>2</sup> Reference period for access and usage of USDA reports, research information, and services is the last 12 months prior to June 1 of survey year.

<sup>3</sup> Includes CT, ME, MA, NH, NJ, NY, PA, RI, and VT.

<sup>4</sup> Includes IL, IN, IA, KS, MI, MN, MO, NE, ND, OH, SD, and WI.

<sup>5</sup> Includes AL, AR, DE, FL, GA, KY, LA, MD, MS, NC, OK, SC, TN, TX, VA, and WV.

<sup>6</sup> Includes AZ, CA, CO, ID, MT, NV, NM, OR, UT, WA, and WY.

<sup>7</sup> Excludes AK and HI.

**Conducting Business on the Internet and Usage of Toll-Free Customer Service Numbers  
By Economic Class <sup>1</sup>, Type of Farm, Region and United States, 2005, 2007, and 2009**

State	Farms					
	Conduct Business With Any USDA Web site			Conduct Business With Any Other Federal Government Web site		
	2005	2007	2009	2005	2007	2009
	<i>Percent</i>	<i>Percent</i>	<i>Percent</i>	<i>Percent</i>	<i>Percent</i>	<i>Percent</i>
Northeast <sup>2</sup>	4	2	5	3	4	5
\$1,000-9,999	2	1	4	2	3	5
\$10,000-99,999	5	3	7	4	4	3
\$100,000 & Over	9	3	6	8	7	6
\$100,000-249,999	9	2	3	7	2	4
\$250,000 & Over	8	4	10	10	14	7
Crop Farms	5	3	6	5	4	4
Livestock Farms	3	2	4	2	4	5
North Central <sup>3</sup>	5	4	5	3	3	4
\$1,000-9,999	3	1	2	2	1	2
\$10,000-99,999	4	3	5	3	3	4
\$100,000 & Over	10	10	9	5	5	6
\$100,000-249,999	8	8	6	4	4	4
\$250,000 & Over	13	12	10	6	6	7
Crop Farms	6	5	6	3	3	4
Livestock Farms	4	3	4	3	2	3
South <sup>4</sup>	3	3	4	3	3	4
\$1,000-9,999	2	2	3	2	2	3
\$10,000-99,999	3	4	4	3	3	4
\$100,000 & Over	9	8	9	7	6	7
\$100,000-249,999	7	6	7	6	4	4
\$250,000 & Over	10	9	10	8	7	9
Crop Farms	3	4	5	3	3	4
Livestock Farms	3	3	3	3	3	4
West <sup>5</sup>	5	5	7	5	5	6
\$1,000-9,999	3	2	4	4	3	5
\$10,000-99,999	5	5	5	5	6	4
\$100,000 & Over	11	11	13	6	8	11
\$100,000-249,999	9	8	9	5	4	7
\$250,000 & Over	12	14	16	7	11	14
Crop Farms	7	7	9	5	6	7
Livestock Farms	4	4	5	4	3	5
US <sup>6</sup>	4	4	5	3	3	4
\$1,000-9,999	2	2	3	2	2	3
\$10,000-99,999	4	4	5	3	4	4
\$100,000 & Over	10	9	9	6	6	7
\$100,000-249,999	8	7	7	5	4	5
\$250,000 & Over	12	11	11	7	8	9
Crop Farms	5	5	6	3	4	5
Livestock Farms	3	3	4	3	3	4

<sup>1</sup> Economic class refers to sales and government payments received during the previous year.

<sup>2</sup> Includes CT, ME, MA, NH, NJ, NY, PA, RI, and VT.

<sup>3</sup> Includes IL, IN, IA, KS, MI, MN, MO, NE, ND, OH, SD, and WI.

<sup>4</sup> Includes AL, AR, DE, FL, GA, KY, LA, MD, MS, NC, OK, SC, TN, TX, VA, and WV.

<sup>5</sup> Includes AZ, CA, CO, ID, MT, NV, NM, OR, UT, WA, and WY.

<sup>6</sup> Excludes AK and HI.

**Conducting Business on the Internet and Usage of Toll-Free Customer Service Numbers  
By Economic Class <sup>1</sup>, Type of Farm, Region and United States, 2005, 2007, and 2009**

State	Farms					
	Use Any USDA Toll-Free Customer Service Number			Conduct Business With Any Non-Agricultural Web site		
	2005	2007	2009	2005	2007	2009
	<i>Percent</i>	<i>Percent</i>	<i>Percent</i>	<i>Percent</i>	<i>Percent</i>	<i>Percent</i>
Northeast <sup>2</sup>	4	6	5	31	30	41
\$1,000-9,999	3	4	3	31	28	42
\$10,000-99,999	4	6	8	34	31	44
\$100,000 & Over	10	12	7	29	34	34
\$100,000-249,999	7	13	5	24	28	26
\$250,000 & Over	14	10	9	37	41	45
Crop Farms	5	6	5	33	30	41
Livestock Farms	4	6	5	30	29	41
North Central <sup>3</sup>	5	4	5	27	30	35
\$1,000-9,999	3	2	3	25	28	32
\$10,000-99,999	5	3	4	22	26	30
\$100,000 & Over	7	7	7	35	39	42
\$100,000-249,999	7	5	7	28	32	35
\$250,000 & Over	8	8	7	44	46	48
Crop Farms	5	4	5	26	31	36
Livestock Farms	5	4	4	27	29	32
South <sup>4</sup>	4	4	3	21	23	27
\$1,000-9,999	3	3	2	20	21	25
\$10,000-99,999	4	4	4	20	23	27
\$100,000 & Over	10	8	7	34	35	36
\$100,000-249,999	9	8	5	29	33	33
\$250,000 & Over	10	8	8	39	37	39
Crop Farms	5	4	4	22	23	27
Livestock Farms	4	3	3	21	24	27
West <sup>5</sup>	5	4	4	38	35	41
\$1,000-9,999	4	2	4	36	32	42
\$10,000-99,999	5	5	3	35	32	37
\$100,000 & Over	7	6	8	46	44	45
\$100,000-249,999	7	5	5	43	36	36
\$250,000 & Over	7	8	11	49	50	52
Crop Farms	5	3	6	39	34	40
Livestock Farms	5	4	3	37	35	42
US <sup>6</sup>	5	4	4	26	28	33
\$1,000-9,999	3	3	3	25	25	31
\$10,000-99,999	5	4	4	23	26	31
\$100,000 & Over	8	7	7	36	38	41
\$100,000-249,999	7	7	6	30	32	34
\$250,000 & Over	9	8	8	43	44	47
Crop Farms	5	4	5	28	29	35
Livestock Farms	4	4	3	25	27	31

<sup>1</sup> Economic class refers to sales and government payments received during the previous year.

<sup>2</sup> Includes CT, ME, MA, NH, NJ, NY, PA, RI, and VT.

<sup>3</sup> Includes IL, IN, IA, KS, MI, MN, MO, NE, ND, OH, SD, and WI.

<sup>4</sup> Includes AL, AR, DE, FL, GA, KY, LA, MD, MS, NC, OK, SC, TN, TX, VA, and WV.

<sup>5</sup> Includes AZ, CA, CO, ID, MT, NV, NM, OR, UT, WA, and WY.

<sup>6</sup> Excludes AK and HI.

**Primary Method of Internet Access <sup>1</sup>**  
**By Economic Class <sup>2</sup>,**  
**Region and United States, 2005, 2007, and 2009**

Region	Dialup			DSL			Cable		
	2005	2007	2009	2005	2007	2009	2005	2007	2009
	<i>Percent</i>	<i>Percent</i>	<i>Percent</i>	<i>Percent</i>	<i>Percent</i>	<i>Percent</i>	<i>Percent</i>	<i>Percent</i>	<i>Percent</i>
Northeast <sup>3</sup>	62	43	23	16	29	32	9	17	30
\$1,000-9,999	61	46	25	15	27	30	9	19	32
\$10,000-99,999	62	46	15	18	26	33	9	15	29
\$100,000 & Over	65	34	25	17	39	39	11	12	22
\$100,000-249,999	74	46	29	14	36	37	10	6	22
\$250,000 & Over	51	21	22	23	42	40	12	20	23
Crop Farms	66	38	22	15	25	30	12	27	36
Livestock Farms	59	48	23	17	32	34	8	8	26
North Central <sup>4</sup>	71	48	23	13	28	37	4	5	7
\$1,000-9,999	76	52	27	12	28	38	3	5	7
\$10,000-99,999	69	49	23	14	28	36	6	7	9
\$100,000 & Over	67	41	18	14	29	37	4	3	5
\$100,000-249,999	72	46	24	11	28	35	4	3	6
\$250,000 & Over	62	37	15	17	31	38	4	3	5
Crop Farms	69	45	20	14	28	37	5	6	7
Livestock Farms	74	52	27	12	27	37	3	4	7
South <sup>5</sup>	70	49	26	13	27	37	6	7	10
\$1,000-9,999	73	51	27	11	26	36	5	7	10
\$10,000-99,999	70	48	25	13	28	38	7	7	11
\$100,000 & Over	62	43	19	18	32	41	8	7	8
\$100,000-249,999	64	43	22	18	34	43	10	6	7
\$250,000 & Over	60	43	17	17	30	40	7	7	9
Crop Farms	67	45	22	15	31	42	6	7	10
Livestock Farms	72	51	28	12	26	35	6	7	10
West <sup>6</sup>	65	40	17	14	25	31	5	8	11
\$1,000-9,999	65	41	17	14	24	29	7	8	14
\$10,000-99,999	70	44	17	12	25	37	4	7	10
\$100,000 & Over	61	32	17	15	26	28	3	9	6
\$100,000-249,999	67	38	23	14	27	30	2	7	7
\$250,000 & Over	57	28	13	17	25	26	3	11	5
Crop Farms	63	35	17	16	25	33	4	7	7
Livestock Farms	68	44	18	12	24	28	7	8	14
US <sup>7</sup>	69	47	23	13	27	36	6	7	11
\$1,000-9,999	72	49	25	12	27	35	5	7	12
\$10,000-99,999	69	48	23	14	27	37	6	8	11
\$100,000 & Over	65	40	19	15	30	36	5	5	7
\$100,000-249,999	70	44	24	13	30	36	5	4	7
\$250,000 & Over	60	36	15	18	30	37	5	6	7
Crop Farms	66	44	20	15	27	37	6	8	10
Livestock Farms	71	50	26	12	27	35	5	6	11

<sup>1</sup> Primary method of internet access for those operators who have access to the internet.

<sup>2</sup> Economic class refers to sales and government payments received during the previous year.

<sup>3</sup> Includes CT, ME, MA, NH, NJ, NY, PA, RI, and VT.

<sup>4</sup> Includes IL, IN, IA, KS, MI, MN, MO, NE, ND, OH, SD, and WI.

<sup>5</sup> Includes AL, AR, DE, FL, GA, KY, LA, MD, MS, NC, OK, SC, TN, TX, VA, and WV.

<sup>6</sup> Includes AZ, CA, CO, ID, MT, NV, NM, OR, UT, WA, and WY.

<sup>7</sup> Excludes AK and HI.

**Primary Method of Internet Access <sup>1</sup>  
By Economic Class <sup>2</sup>,  
Region and United States, 2005, 2007, and 2009**

Region	Satellite			Wireless			Other/ Unknown		
	2005	2007	2009	2005	2007	2009	2005	2007	2009
	<i>Percent</i>	<i>Percent</i>	<i>Percent</i>	<i>Percent</i>	<i>Percent</i>	<i>Percent</i>	<i>Percent</i>	<i>Percent</i>	<i>Percent</i>
Northeast <sup>3</sup>	3	3	5	2	1	4	8	7	6
\$1,000-9,999	5	3	5	2	*	3	8	5	5
\$10,000-99,999	1	2	7	1	2	5	9	9	11
\$100,000 & Over	1	2	5	1	3	6	5	10	3
\$100,000-249,999	0	3	4	1	2	7	1	7	1
\$250,000 & Over	2	2	5	2	3	5	10	12	5
Crop Farms	*	2	2	1	2	4	6	6	6
Livestock Farms	5	3	8	2	1	3	9	8	6
North Central <sup>4</sup>	3	6	12	4	9	17	5	4	4
\$1,000-9,999	2	5	10	2	6	15	5	4	3
\$10,000-99,999	3	5	12	3	7	14	5	4	6
\$100,000 & Over	4	9	15	7	14	21	4	4	4
\$100,000-249,999	3	8	13	6	11	19	4	4	3
\$250,000 & Over	4	10	16	8	16	22	5	3	4
Crop Farms	3	6	13	5	11	18	4	4	5
Livestock Farms	3	7	11	3	7	14	5	3	4
South <sup>5</sup>	3	8	13	2	4	10	6	5	4
\$1,000-9,999	3	8	13	2	4	10	6	4	4
\$10,000-99,999	3	7	15	2	5	8	5	5	3
\$100,000 & Over	4	7	14	2	5	14	6	6	4
\$100,000-249,999	3	7	13	1	4	12	4	6	3
\$250,000 & Over	5	8	15	3	6	15	8	6	4
Crop Farms	3	6	14	3	5	9	6	6	3
Livestock Farms	3	8	13	2	4	10	5	4	4
West <sup>6</sup>	7	10	19	5	11	18	4	6	4
\$1,000-9,999	8	9	17	3	10	19	3	8	4
\$10,000-99,999	6	10	16	5	11	16	3	3	4
\$100,000 & Over	5	13	26	9	13	19	7	7	4
\$100,000-249,999	5	10	22	5	10	15	7	8	3
\$250,000 & Over	5	14	30	11	16	21	7	6	5
Crop Farms	7	12	21	6	15	18	4	6	4
Livestock Farms	6	9	17	4	8	19	3	7	4
US <sup>7</sup>	4	7	13	3	7	13	5	5	4
\$1,000-9,999	4	7	12	2	5	12	5	5	4
\$10,000-99,999	3	6	13	3	7	11	5	4	5
\$100,000 & Over	4	9	16	6	11	18	5	5	4
\$100,000-249,999	3	8	14	5	9	16	4	5	3
\$250,000 & Over	4	10	18	7	13	19	6	5	4
Crop Farms	4	7	14	4	9	15	5	5	4
Livestock Farms	4	7	13	3	5	11	5	5	4

\* Less than one percent.

<sup>1</sup> Primary method of internet access for those operators who have access to the internet.

<sup>2</sup> Economic class refers to sales and government payments received during the previous year.

<sup>3</sup> Includes CT, ME, MA, NH, NJ, NY, PA, RI, and VT.

<sup>4</sup> Includes IL, IN, IA, KS, MI, MN, MO, NE, ND, OH, SD, and WI.

<sup>5</sup> Includes AL, AR, DE, FL, GA, KY, LA, MD, MS, NC, OK, SC, TN, TX, VA, and WV.

<sup>6</sup> Includes AZ, CA, CO, ID, MT, NV, NM, OR, UT, WA, and WY.

<sup>7</sup> Excludes AK and HI.

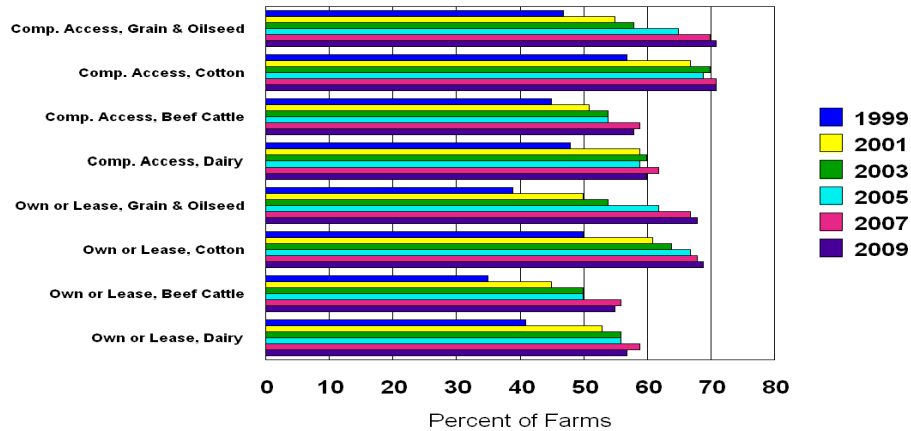
**Farm Computer Usage: by Economic Class <sup>1</sup>, By Type of Farm,  
United States, 2005, 2007, and 2009**

Type of Farm	Farms					
	With Computer Access			That Own or Lease Computers		
	2005	2007	2009	2005	2007	2009
	<i>Percent</i>	<i>Percent</i>	<i>Percent</i>	<i>Percent</i>	<i>Percent</i>	<i>Percent</i>
Grain & Oilseed Farms, US	65	70	71	62	67	68
\$1,000-249,999	61	64	65	57	60	62
\$250,000 & Over	81	85	82	79	84	81
Cotton Farms, US	69	71	71	67	68	69
\$1,000-249,999	61	60	69	57	59	68
\$250,000 & Over	78	81	78	78	80	77
Beef Cattle Farms, US	54	59	58	50	56	55
\$1,000-249,999	53	58	58	49	54	55
\$250,000 & Over	72	80	77	71	78	75
Dairy Farms, US	59	62	60	56	59	57
\$1,000-249,999	50	51	48	47	48	45
\$250,000 & Over	80	76	81	76	74	79
Crop Farms, US	60	64	65	57	61	62
\$1,000-249,999	58	62	62	54	56	58
\$250,000 & Over	82	83	82	79	84	80
Livestock Farms, US	58	64	63	54	60	60
\$1,000-249,999	56	63	62	52	59	59
\$250,000 & Over	77	78	77	75	74	75
All Farms, US <sup>2</sup>	59	64	64	55	60	61
\$1,000-249,999	57	62	62	53	58	59
\$250,000 & Over	80	81	81	77	79	79

<sup>1</sup> Economic class refers to sales and government payments received during the previous year.

<sup>2</sup> Excludes AK and HI.

**Computer Access and Ownership  
By Type of Farm, 1999-2009, U.S. Level**



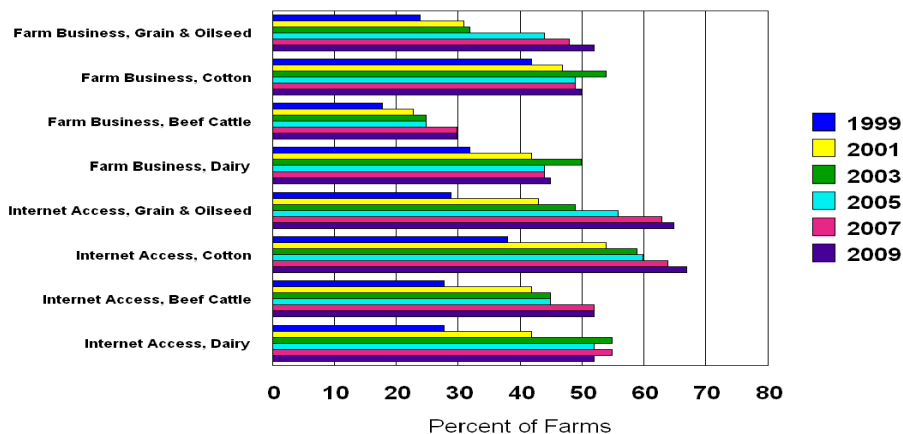
**Farm Computer Usage: by Economic Class <sup>1</sup>, By Type of Farm,  
United States, 2005, 2007, and 2009 (cont.)**

Type of Farm	Farms					
	Using Computers for Farm Business			With Internet Access		
	2005	2007	2009	2005	2007	2009
	<i>Percent</i>	<i>Percent</i>	<i>Percent</i>	<i>Percent</i>	<i>Percent</i>	<i>Percent</i>
Grain & Oilseed Farms, US	44	48	52	56	63	65
\$1,000-249,999	39	42	43	52	56	58
\$250,000 & Over	67	69	71	74	81	79
Cotton Farms, US	49	49	50	60	64	67
\$1,000-249,999	37	37	46	50	53	59
\$250,000 & Over	63	62	56	72	75	72
Beef Cattle Farms, US	25	30	30	45	52	52
\$1,000-249,999	24	29	29	43	51	51
\$250,000 & Over	59	56	58	66	73	70
Dairy Farms, US	44	44	45	52	55	52
\$1,000-249,999	32	32	30	41	44	41
\$250,000 & Over	66	67	69	71	70	77
Crop Farms, US	34	37	40	52	56	60
\$1,000-249,999	30	31	33	49	52	56
\$250,000 & Over	67	69	71	74	80	77
Livestock Farms, US	30	33	33	50	57	58
\$1,000-249,999	27	31	32	49	56	56
\$250,000 & Over	65	61	64	70	71	72
All Farms, US <sup>2</sup>	32	35	36	51	57	59
\$1,000-249,999	29	32	32	49	54	56
\$250,000 & Over	66	66	69	72	76	76

<sup>1</sup> Economic class refers to sales and government payments received during the previous year.

<sup>2</sup> Excludes AK and HI.

**Farm Business Usage and Internet Access  
By Type of Farm, 1997-2007, U.S. Level**



**Primary Method of Internet Access <sup>1</sup>**  
**By Economic Class <sup>2</sup>, By Type of Farm, United States, 2005, 2007, and 2009**

Type of Farm	Dialup			DSL			Cable		
	2005	2007	2009	2005	2007	2009	2005	2007	2009
	<i>Percent</i>	<i>Percent</i>	<i>Percent</i>	<i>Percent</i>	<i>Percent</i>	<i>Percent</i>	<i>Percent</i>	<i>Percent</i>	<i>Percent</i>
Grain & Oilseed Farms, US	66	44	19	16	27	36	5	6	7
\$1,000-249,999	67	48	23	15	26	36	6	7	8
\$250,000 & Over	62	34	14	16	30	37	4	5	5
Cotton Farms, US	63	39	16	17	28	30	6	8	16
\$1,000-249,999	72	42	13	17	30	29	3	9	23
\$250,000 & Over	57	38	19	18	27	32	8	8	7
Beef Cattle Farms, US	74	52	28	12	28	36	4	4	8
\$1,000-249,999	75	53	29	11	27	36	4	4	8
\$250,000 & Over	61	41	15	22	30	41	3	4	4
Dairy Farms, US	76	53	32	11	24	31	4	6	11
\$1,000-249,999	78	57	37	10	23	30	4	4	10
\$250,000 & Over	73	47	28	12	26	33	3	7	11
Crop Farms, US	66	44	20	15	27	37	6	8	10
\$1,000-249,999	68	46	22	15	27	37	6	8	11
\$250,000 & Over	59	33	13	17	30	37	5	7	7
Livestock Farms, US	71	50	26	12	27	35	5	6	11
\$1,000-249,999	72	51	26	11	26	35	6	6	11
\$250,000 & Over	62	43	19	18	28	37	5	6	7
All Farms, US <sup>3</sup>	69	47	23	13	27	36	6	7	11
\$1,000-249,999	70	48	24	13	27	36	6	7	11
\$250,000 & Over	60	36	15	18	30	37	5	6	7

<sup>1</sup> Primary method of internet access for those operators who have access to the internet.

<sup>2</sup> Economic class refers to sales and government payments received during the previous year.

<sup>3</sup> Excludes AK and HI.



**Primary Method of Internet Access <sup>1</sup>**  
**By Economic Class <sup>2</sup>, By Type of Farm, United States, 2005, 2007, and 2009**

Type of Farm	Satellite			Wireless			Other/ Unknown		
	2005	2007	2009	2005	2007	2009	2005	2007	2009
	<i>Percent</i>	<i>Percent</i>	<i>Percent</i>	<i>Percent</i>	<i>Percent</i>	<i>Percent</i>	<i>Percent</i>	<i>Percent</i>	<i>Percent</i>
Grain & Oilseed Farms, US	3	8	14	6	11	19	4	4	5
\$1,000-249,999	3	6	12	5	9	16	4	4	5
\$250,000 & Over	4	10	18	10	17	22	4	4	4
Cotton Farms, US	5	9	15	4	12	19	5	4	4
\$1,000-249,999	4	6	17	2	10	14	2	3	4
\$250,000 & Over	5	11	14	5	12	25	7	4	3
Beef Cattle Farms, US	3	7	14	2	4	10	5	5	4
\$1,000-249,999	3	7	13	2	4	10	5	5	4
\$250,000 & Over	5	10	17	4	9	17	5	6	6
Dairy Farms, US	2	4	11	1	7	12	6	6	3
\$1,000-249,999	1	4	10	2	6	9	5	6	4
\$250,000 & Over	3	5	11	1	9	15	8	6	2
Crop Farms, US	4	7	14	4	9	15	5	5	4
\$1,000-249,999	3	6	12	3	8	14	5	5	4
\$250,000 & Over	5	10	18	9	15	21	5	5	4
Livestock Farms, US	4	7	13	3	5	11	5	5	4
\$1,000-249,999	4	7	13	2	5	11	5	5	4
\$250,000 & Over	4	9	17	4	9	16	7	5	4
All Farms, US <sup>3</sup>	4	7	13	3	7	13	5	5	4
\$1,000-249,999	3	7	13	3	6	12	5	5	4
\$250,000 & Over	4	10	18	7	13	19	6	5	4

<sup>1</sup> Primary method of internet access for those operators who have access to the internet.

<sup>2</sup> Economic class refers to sales and government payments received during the previous year.

<sup>3</sup> Excludes AK and HI.

**Farm Numbers:** To help equate the percentages published in this report to actual farm counts, a table showing "Number of Farms: by State and United States" from the February 2009 NASS publication "Farms, Land in Farms, and Livestock Operations" is included below. A farm is "any place from which \$1,000 or more of agricultural products were produced and sold, or normally would have been sold, during the year."

**Number of Farms: by State and United States,  
2005, 2007, and 2008 <sup>1</sup>**

State	2005	2007	2008
	<i>Number</i>	<i>Number</i>	<i>Number</i>
AL	43,500	48,800	48,500
AZ	10,100	15,600	15,600
AR	47,000	49,300	49,300
CA	76,500	81,000	81,500
CO	30,500	36,900	36,500
DE	2,300	2,550	2,500
FL	42,000	47,500	47,500
GA	49,000	47,900	47,800
ID	25,000	25,400	25,200
IL	72,500	76,900	75,900
IN	59,000	61,000	61,000
IA	89,000	92,800	92,600
KS	64,500	65,500	65,500
KY	84,000	85,300	85,300
LA	26,800	30,000	30,000
MD	12,100	12,850	12,850
MI	53,000	56,000	55,000
MN	79,600	81,000	81,000
MS	42,200	42,000	42,000
MO	105,000	107,800	108,000
MT	28,000	29,500	29,500
NE	48,000	47,700	47,400
NV	3,000	3,100	3,100
NH <sup>2</sup>	27,950	33,070	32,970
NJ	9,800	10,300	10,300
NM	17,500	21,000	20,600
NY	35,600	36,400	36,600
NC	49,000	52,900	52,500
ND	30,300	32,000	32,000
OH	76,500	75,900	75,000
OK	83,000	86,600	86,600
OR	40,000	38,600	38,600
PA	58,200	63,200	63,200
SC	24,500	25,900	26,900
SD	31,400	31,200	31,300
TN	83,000	79,500	79,000
TX	230,000	247,500	247,500
UT	15,200	16,700	16,500
VA	47,000	47,400	47,000
WA	34,500	39,300	39,500
WV	20,800	23,400	23,200
WI	76,500	78,500	78,000
WY	9,200	11,000	11,000
US <sup>3</sup>	2,092,550	2,196,770	2,191,820

<sup>1</sup> 2009 number of farms not available until February 2010.

<sup>2</sup> Includes CT, ME, MA, NH, RI, and VT.

<sup>3</sup> Excludes AK and HI.

**Survey Procedures:** The June Agricultural Survey is conducted every year to provide estimates of farm numbers and land in farms, crop acres planted, grains and oilseeds in storage, livestock inventories, and land values. Every other year since 1997, questions were included in the survey form that asked the operator about access and use of computers.

The 2009 computer usage estimates are based on responses from 31,495 agricultural operations and represent all sizes and types of farms. Coefficients of variations (CVs) at the national level in 2009 were 6 percent or less; at the regional level, CVs ranged from 1 to 24 percent; and at the State level, CVs generally ranged from 2 to 54 percent.

The 2009 June Agricultural Survey provided the first opportunity for all American Indian operators to report computer usage individually. Previous Farm Computer Usage and Ownership releases allowed for a single report for an entire reservation.

**Revisions:** Estimates for Farms With Computer Access, Farms That Own or Lease Computers, Farms Using Computers for Farm Business, and Farms With Internet Access were reviewed and revised as necessary based on the 2007 Agricultural Census.

### Report Features

Released August 14, 2009, by the National Agricultural Statistics Service (NASS), Agricultural Statistics Board, U.S. Department of Agriculture. For information on "Farm Computer Usage and Ownership" call Liana Cuffman at (202) 690-0392, office hours 7:30 a.m. to 4:00 p.m. ET.

Listed below are persons within the National Agricultural Statistics Service to contact for additional information.

Kevin Barnes, Chief, Environmental, Economics, and Demographics Branch	(202) 720-6146
Mark R. Miller, Head, Environmental and Demographics Section	(202) 720-0684
Liana Cuffman, Commodity Statistician	(202) 690-0392
Mark Aitken, Commodity Statistician	(202) 720-9525

## ACCESS TO REPORTS!!

---

For your convenience, there are several ways to obtain NASS reports, data products, and services:

### INTERNET ACCESS

All NASS reports are available free of charge. For free access, connect to the Internet and go to the NASS Home Page at: **www.nass.usda.gov**.

### E-MAIL SUBSCRIPTION

All NASS reports are available by subscription free of charge direct to your e-mail address. Starting with the NASS Home Page at **www.nass.usda.gov**, under the right navigation, *Receive reports by Email*, click on **National** or **State**. Follow the instructions on the screen.

-----

### PRINTED REPORTS OR DATA PRODUCTS

**CALL OUR TOLL-FREE ORDER DESK: 800-999-6779 (U.S. and Canada)**  
**Other areas, please call 703-605-6220      FAX: 703-605-6900**  
**(Visa, MasterCard, check, or money order acceptable for payment.)**

-----

### ASSISTANCE

For **assistance** with general agricultural statistics or further information about NASS or its products or services, contact the **Agricultural Statistics Hotline** at **800-727-9540**, 7:30 a.m. to 4:00 p.m. ET, or e-mail: **nass@nass.usda.gov**.

The U.S. Department of Agriculture (USDA) prohibits discrimination in all its programs and activities on the basis of race, color, national origin, age, disability, and where applicable, sex, marital status, familial status, parental status, religion, sexual orientation, genetic information, political beliefs, reprisal, or because all or a part of an individual's income is derived from any public assistance program. (Not all prohibited bases apply to all programs.) Persons with disabilities who require alternative means for communication of program information (Braille, large print, audiotape, etc.) should contact USDA's TARGET Center at (202) 720-2600 (voice and TDD).

To file a complaint of discrimination, write to USDA, Director, Office of Civil Rights, 1400 Independence Avenue, S.W., Washington, D.C. 20250-9410, or call (800) 795-3272 (voice) or (202) 720-6382 (TDD). USDA is an equal opportunity provider and employer.