



# Milk Production

ISSN: 1949-1557

Released August 19, 2019, by the National Agricultural Statistics Service (NASS), Agricultural Statistics Board, United States Department of Agriculture (USDA).

## July Milk Production up 0.1 Percent

**Milk production** in the 24 major States during July totaled 17.5 billion pounds, up 0.1 percent from July 2018. June revised production, at 17.4 billion pounds, was up 0.2 percent from June 2018. The June revision represented an increase of 26 million pounds or 0.1 percent from last month's preliminary production estimate.

**Production per cow** in the 24 major States averaged 1,993 pounds for July, 16 pounds above July 2018.

**The number of milk cows** on farms in the 24 major States was 8.77 million head, 60,000 head less than July 2018, and 8,000 head less than June 2019.

## July Milk Production in the United States up slightly

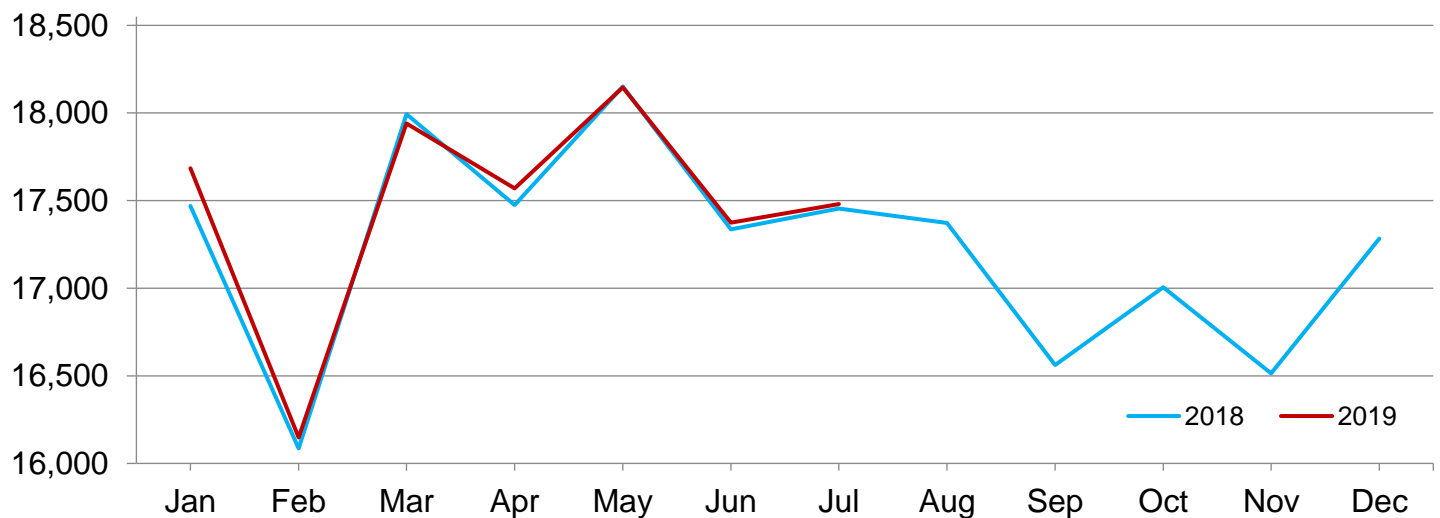
**Milk production** in the United States during July totaled 18.3 billion pounds, up slightly from July 2018.

**Production per cow** in the United States averaged 1,969 pounds for July, 17 pounds above July 2018.

**The number of milk cows** on farms in the United States was 9.31 million head, 82,000 head less than July 2018, and 9,000 head less than June 2019.

## Monthly Milk Production – 24 Selected States

Million pounds



## Milk Cows and Production by Quarter – United States: 2018-2019

[May not add due to rounding. Blank data cells indicate estimation period has not yet begun]

Quarter	Milk cows <sup>1</sup>		Milk per cow <sup>2</sup>		Milk production <sup>2</sup>		
	2018	2019	2018	2019	2018	2019	Change from 2018
	(1,000 head)	(1,000 head)	(pounds)	(pounds)	(million pounds)	(million pounds)	(percent)
January-March .....	9,435	9,344	5,766	5,827	54,399	54,450	0.1
April-June .....	9,418	9,327	5,928	5,980	55,831	55,778	-0.1
July-September .....	9,383		5,752		53,969		
October-December .....	9,359		5,703		53,376		
Annual .....	9,399		23,149		217,575		

<sup>1</sup> Includes dry cows. Excludes heifers not yet fresh.

<sup>2</sup> Excludes milk sucked by calves.

## Milk Cows and Production by Month – 24 Selected States: 2018-2019

[May not add due to rounding. Blank data cells indicate estimation period has not yet begun]

Month	Milk cows <sup>1</sup>		Milk per cow <sup>2</sup>		Milk production <sup>2</sup>		
	2018	2019	2018	2019	2018	2019	Change from 2018
	(1,000 head)	(1,000 head)	(pounds)	(pounds)	(million pounds)	(million pounds)	(percent)
January .....	8,856	8,805	1,973	2,009	17,469	17,685	1.2
February .....	8,855	8,805	1,817	1,834	16,086	16,148	0.4
March .....	8,849	8,788	2,033	2,041	17,994	17,940	-0.3
April .....	8,844	8,788	1,976	1,999	17,475	17,570	0.5
May .....	8,848	8,790	2,051	2,064	18,151	18,146	-
June .....	8,840	8,777	1,961	1,979	17,336	17,374	0.2
July .....	8,829	8,769	1,977	1,993	17,454	17,480	0.1
August .....	8,826		1,968		17,372		
September .....	8,807		1,880		16,561		
October .....	8,807		1,931		17,005		
November .....	8,802		1,876		16,514		
December .....	8,798		1,964		17,282		
Annual .....	8,830		23,407		206,699		

- Represents zero.

<sup>1</sup> Includes dry cows. Excludes heifers not yet fresh.

<sup>2</sup> Excludes milk sucked by calves.

## Estimated Milk Cows and Production by Month – United States: 2018-2019

[May not add due to rounding. Blank data cells indicate estimation period has not yet begun]

Month	Milk cows <sup>1</sup>		Milk per cow <sup>2</sup>		Milk production <sup>2</sup>		
	2018	2019	2018	2019	2018	2019	Change from 2018
	(1,000 head)	(1,000 head)	(pounds)	(pounds)	(million pounds)	(million pounds)	(percent)
January .....	9,438	9,352	1,953	1,989	18,437	18,600	0.9
February .....	9,436	9,350	1,799	1,816	16,973	16,981	-
March .....	9,430	9,330	2,014	2,022	18,989	18,869	-0.6
April .....	9,418	9,330	1,955	1,978	18,412	18,458	0.2
May .....	9,422	9,333	2,030	2,043	19,131	19,064	-0.4
June .....	9,414	9,319	1,943	1,959	18,288	18,256	-0.2
July .....	9,392	9,310	1,952	1,969	18,329	18,330	-
August .....	9,389		1,943		18,245		
September .....	9,368		1,857		17,395		
October .....	9,367		1,908		17,873		
November .....	9,358		1,854		17,348		
December .....	9,353		1,941		18,155		
Annual .....	9,399		23,149		217,575		

- Represents zero.

<sup>1</sup> Includes dry cows. Excludes heifers not yet fresh.

<sup>2</sup> Excludes milk sucked by calves.

## Milk Cows and Production – 24 Selected States: July 2018 and 2019

[May not add due to rounding]

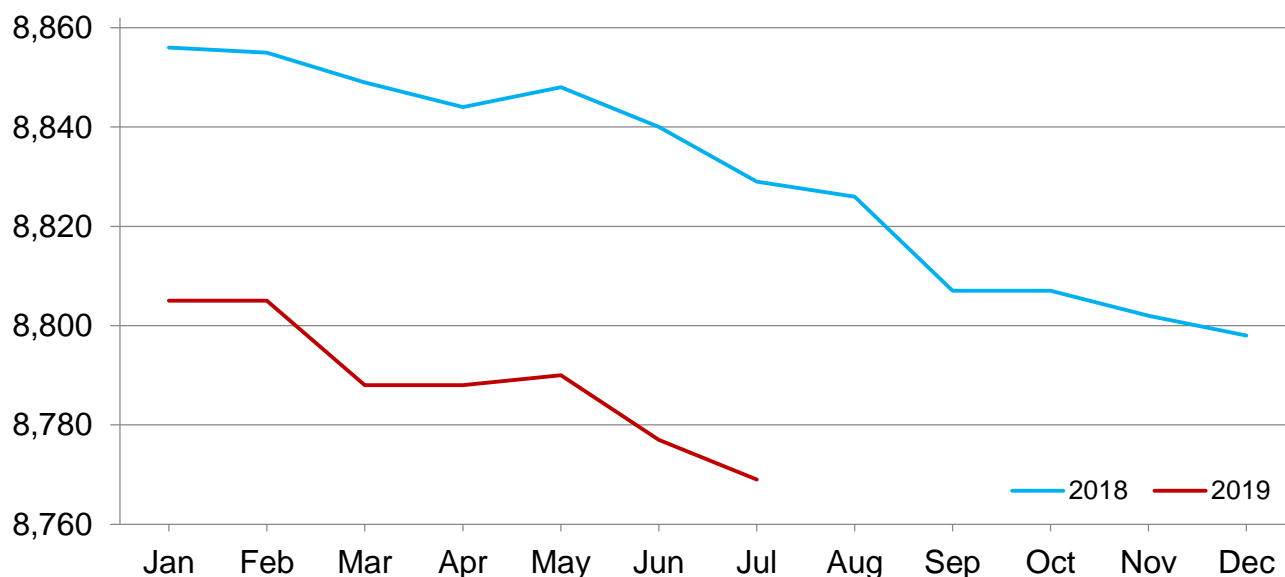
State	Milk cows <sup>1</sup>		Milk per cow <sup>2</sup>		Milk production <sup>2</sup>		Change from 2018
	2018	2019	2018	2019	2018	2019	
	(1,000 head)	(1,000 head)	(pounds)	(pounds)	(million pounds)	(million pounds)	(percent)
Arizona .....	206	193	1,895	1,885	390	364	-6.7
California .....	1,734	1,728	1,900	1,955	3,295	3,378	2.5
Colorado .....	177	187	2,215	2,220	392	415	5.9
Florida .....	119	115	1,580	1,615	188	186	-1.1
Georgia .....	81	82	1,770	1,795	143	147	2.8
Idaho .....	610	620	2,175	2,185	1,327	1,355	2.1
Illinois .....	92	84	1,680	1,705	155	143	-7.7
Indiana .....	184	175	1,890	1,890	348	331	-4.9
Iowa .....	220	217	1,995	2,010	439	436	-0.7
Kansas .....	159	161	1,970	1,960	313	316	1.0
Michigan .....	423	425	2,240	2,245	948	954	0.6
Minnesota .....	452	447	1,860	1,900	841	849	1.0
New Mexico .....	328	323	2,140	2,155	702	696	-0.9
New York .....	622	627	2,065	2,055	1,284	1,288	0.3
Ohio .....	260	246	1,795	1,785	467	439	-6.0
Oregon .....	121	123	1,790	1,800	217	221	1.8
Pennsylvania .....	520	485	1,730	1,715	900	832	-7.6
South Dakota .....	121	123	1,900	1,920	230	236	2.6
Texas .....	538	565	2,050	2,065	1,103	1,167	5.8
Utah .....	101	97	2,000	1,990	202	193	-4.5
Vermont .....	127	126	1,770	1,810	225	228	1.3
Virginia .....	83	74	1,610	1,610	134	119	-11.2
Washington .....	277	278	2,095	2,090	580	581	0.2
Wisconsin .....	1,274	1,268	2,065	2,055	2,631	2,606	-1.0
24-State Total .....	8,829	8,769	1,977	1,993	17,454	17,480	0.1

<sup>1</sup> Includes dry cows. Excludes heifers not yet fresh.

<sup>2</sup> Excludes milk sucked by calves.

## Monthly Milk Cows – 24 Selected States

Thousand head



## Milk Cows and Production – 24 Selected States: June 2018 and 2019

[May not add due to rounding]

	Milk cows <sup>1</sup>		Milk per cow <sup>2</sup>		Milk production <sup>2</sup>		Change from 2018
	2018	2019	2018	2019	2018	2019	
	(1,000 head)	(1,000 head)	(pounds)	(pounds)	(million pounds)	(million pounds)	(percent)
Arizona .....	206	195	2,005	1,995	413	389	-5.8
California .....	1,735	1,728	1,905	1,935	3,305	3,344	1.2
Colorado .....	177	186	2,160	2,165	382	403	5.5
Florida .....	120	115	1,675	1,730	201	199	-1.0
Georgia .....	82	82	1,715	1,770	141	145	2.8
Idaho .....	610	620	2,095	2,115	1,278	1,311	2.6
Illinois .....	93	84	1,720	1,750	160	147	-8.1
Indiana .....	184	177	1,885	1,910	347	338	-2.6
Iowa .....	220	217	1,975	2,005	435	435	-
Kansas .....	159	162	1,935	1,940	308	314	1.9
Michigan .....	423	425	2,240	2,280	948	969	2.2
Minnesota .....	453	447	1,835	1,885	831	843	1.4
New Mexico .....	332	322	2,130	2,140	707	689	-2.5
New York .....	623	627	2,050	2,040	1,277	1,279	0.2
Ohio .....	260	246	1,800	1,810	468	445	-4.9
Oregon .....	121	123	1,750	1,755	212	216	1.9
Pennsylvania .....	521	490	1,720	1,710	896	838	-6.5
South Dakota .....	122	123	1,875	1,885	229	232	1.3
Texas .....	536	565	2,020	2,025	1,083	1,144	5.6
Utah .....	101	97	1,975	1,960	199	190	-4.5
Vermont .....	127	126	1,785	1,795	227	226	-0.4
Virginia .....	84	74	1,610	1,640	135	121	-10.4
Washington .....	277	278	2,050	2,050	568	570	0.4
Wisconsin .....	1,274	1,268	2,030	2,040	2,586	2,587	-
24-State Total .....	8,840	8,777	1,961	1,979	17,336	17,374	0.2

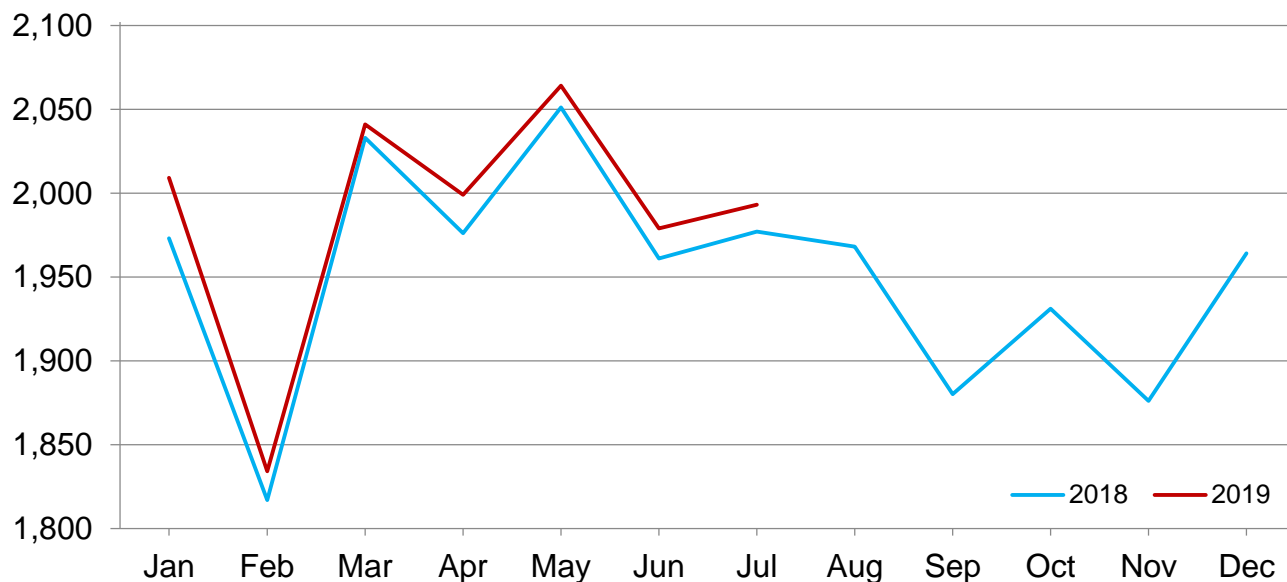
- Represents zero.

<sup>1</sup> Includes dry cows. Excludes heifers not yet fresh.

<sup>2</sup> Excludes milk sucked by calves.

## Monthly Milk per Cow – 24 Selected States

Pounds



## Statistical Methodology

**Survey Procedures:** Primary data used to determine these estimates were obtained from a sample of producers. Individual States maintain a list of all known milk producers and information on the size of their herd. States use all known sources of producers to ensure that their lists are as complete as possible. Generally, all large producers and a sample of small producers are included in the survey. Questionnaires are mailed to producers near the end of the month to obtain data for the first day of the month. Additional reports are obtained by telephone, as needed, to supplement the mail response. Where feasible, States utilize state and federal administrative data to estimate milk production. This eliminates duplication of data gathering by different government agencies such as Agricultural Marketing Service (AMS) Dairy Market News. Indications of milk cow inventory are also obtained in the January Cattle Survey.

**Estimation Procedures:** Regional Field Offices prepare these estimates by using a combination of survey indications, historic trends, and any available administrative data. Individual State estimates are reviewed by the Agricultural Statistics Board for reasonableness.

**Revision Policy:** Milk production, milk per cow, and number of milk cows are subject to revision the following month after initial publication for monthly States or the following quarter for the quarterly States. Normally, administrative data from Federal Market Orders, State Departments of Agriculture, or other sources are the main basis for revisions. However, administrative data for all States may not be available in time for these revisions. Estimates are again subject to revisions in February each year based on additional administrative data. In the event that additional changes are necessary, a third revision is possible in February the following year. Estimates are again reviewed after data from the five-year Census of Agriculture are available. No revisions are made after that date.

**Reliability:** Since all operations with dairy animals are not included in the sample, survey estimates are subject to sampling variability. Survey results are also subject to non-sampling errors such as omissions, duplications, and mistakes in reporting, recording, and processing the data. The effects of these errors cannot be measured directly. They are minimized through rigid quality controls in the data collection process and through a careful review of all reported data for consistency and reasonableness.

To assist users in evaluating the reliability of the estimates in this report, the "Root Mean Square Error" is shown for selected items in the table below. The "Root Mean Square Error" is a statistical measure based on past performance and is computed using the differences between first and final estimates. The "Root Mean Square Error" for the 24 State milk production estimates over the past 18 months is 0.1 percent. This means that chances are 2 out of 3 that the final estimate will not be above or below the current estimate of 17.5 billion pounds by more than 0.1 percent. Chances are 9 out of 10 that the difference will not exceed 0.2 percent.

### Reliability of Monthly Milk Production Estimates

[Based on data for the past 18 months. 24-State data not available prior to 2018]

Item	Root mean square error	90 percent confidence level	Difference between first and latest estimate				
			Average	Smallest	Largest	Months	
						Below latest	Above latest
	(percent)	(percent)	(1,000)	(1,000)	(1,000)	(number)	(number)
Milk production .....	0.1	0.2	19	2	59	13	5
All Milk cows .....	0.2	0.3	10	0	31	13	3

## Information Contacts

Listed below are the commodity specialists in the Livestock Branch of the National Agricultural Statistics Service to contact for additional information. E-mail inquiries may be sent to [nass@usda.gov](mailto:nass@usda.gov).

Travis Averill, Chief, Livestock Branch .....	(202) 720-3570
Scott Hollis, Head, Livestock Section .....	(202) 690-2424
Sherry Bertramsen – Livestock Slaughter .....	(202) 690-8632
Holly Brenize – Sheep and Goats .....	(202) 720-0585
Donnie Fike – Dairy Products .....	(202) 720-4448
Heidi Lanouette – Cattle, Cattle on Feed .....	(202) 720-3040
Mike Miller – Milk Production and Milk Cows .....	(202) 720-3278
Seth Riggins – Hogs and Pigs .....	(202) 720-3106

## Access to NASS Reports

For your convenience, you may access NASS reports and products the following ways:

- All reports are available electronically, at no cost, on the NASS web site: [www.nass.usda.gov](http://www.nass.usda.gov)
- Both national and state specific reports are available via a free e-mail subscription. To set-up this free subscription, visit [www.nass.usda.gov](http://www.nass.usda.gov) and click on “National” or “State” in upper right corner above “search” box to create an account and select the reports you would like to receive.
- Cornell’s Mann Library has launched a new website housing NASS’s and other agency’s archived reports. The new website, <https://usda.library.cornell.edu>. All email subscriptions containing reports will be sent from the new website, <https://usda.library.cornell.edu>. To continue receiving the reports via e-mail, you will have to go to the new website, create a new account and re-subscribe to the reports. If you need instructions to set up an account or subscribe, they are located at: <https://usda.library.cornell.edu/help>. You should whitelist [notifications@usda-esmis.library.cornell.edu](mailto:notifications@usda-esmis.library.cornell.edu) in your email client to avoid the emails going into spam/junk folders.

For more information on NASS surveys and reports, call the NASS Agricultural Statistics Hotline at (800) 727-9540, 7:30 a.m. to 4:00 p.m. ET, or e-mail: [nass@nass.usda.gov](mailto:nass@nass.usda.gov).

The U.S. Department of Agriculture (USDA) prohibits discrimination against its customers, employees, and applicants for employment on the basis of race, color, national origin, age, disability, sex, gender identity, religion, reprisal, and where applicable, political beliefs, marital status, familial or parental status, sexual orientation, or all or part of an individual's income is derived from any public assistance program, or protected genetic information in employment or in any program or activity conducted or funded by the Department. (Not all prohibited bases will apply to all programs and/or employment activities.)

If you wish to file a Civil Rights program complaint of discrimination, complete the [USDA Program Discrimination Complaint Form](#) (PDF), found online at [www.ascr.usda.gov/filing-program-discrimination-complaint-usda-customer](http://www.ascr.usda.gov/filing-program-discrimination-complaint-usda-customer), or at any USDA office, or call (866) 632-9992 to request the form. You may also write a letter containing all of the information requested in the form. Send your completed complaint form or letter to us by mail at U.S. Department of Agriculture, Director, Office of Adjudication, 1400 Independence Avenue, S.W., Washington, D.C. 20250-9410, by fax (202) 690-7442 or email at [program.intake@usda.gov](mailto:program.intake@usda.gov).

# USDA Data Users' Meeting



## **USDA NASS Data Users' Meeting** **Tuesday, October 15, 2019**

American Farm Bureau Federation  
600 Maryland Ave SW #1000w  
Washington, DC 20024

USDA's National Agricultural Statistics Service will hold an open forum for users of U.S. domestic and international agriculture data. NASS is organizing the Data Users' Meeting in cooperation with five other USDA agencies – Agricultural Marketing Service, Economic Research Service, Farm Service Agency, Foreign Agricultural Service, and World Agricultural Outlook Board – and the Census Bureau's Foreign Trade Division. Agency representatives will provide updates on recent and pending changes in statistical and information programs important to agriculture, answer questions, and welcome comments and input from data users.

For registration details and additional information about the Data Users' Meeting, see the meeting page on the NASS website ([https://www.nass.usda.gov/Education\\_and\\_Outreach/Meeting/index.php](https://www.nass.usda.gov/Education_and_Outreach/Meeting/index.php)). Contact Vernita Murray (NASS) at 202-690-8141 or [vernita.murray@nass.usda.gov](mailto:vernita.murray@nass.usda.gov) or Patricia Snipe (NASS) at 202-720-2248 or [patricia.snipe@nass.usda.gov](mailto:patricia.snipe@nass.usda.gov) for information.