



ISSN: 1949-1557

Released August 22, 2022, by the National Agricultural Statistics Service (NASS), Agricultural Statistics Board, United States Department of Agriculture (USDA).

## July Milk Production up 0.3 Percent

**Milk production** in the 24 major States during July totaled 18.3 billion pounds, up 0.3 percent from July 2021. June revised production, at 18.1 billion pounds, was up slightly from June 2021. The June revision represented a decrease of 45 million pounds or 0.2 percent from last month's preliminary production estimate.

**Production per cow** in the 24 major States averaged 2,055 pounds for July, 21 pounds above July 2021.

**The number of milk cows** on farms in the 24 major States was 8.92 million head, 66,000 head less than July 2021, but 1,000 head more than June 2022.

## July Milk Production in the United States up 0.2 Percent

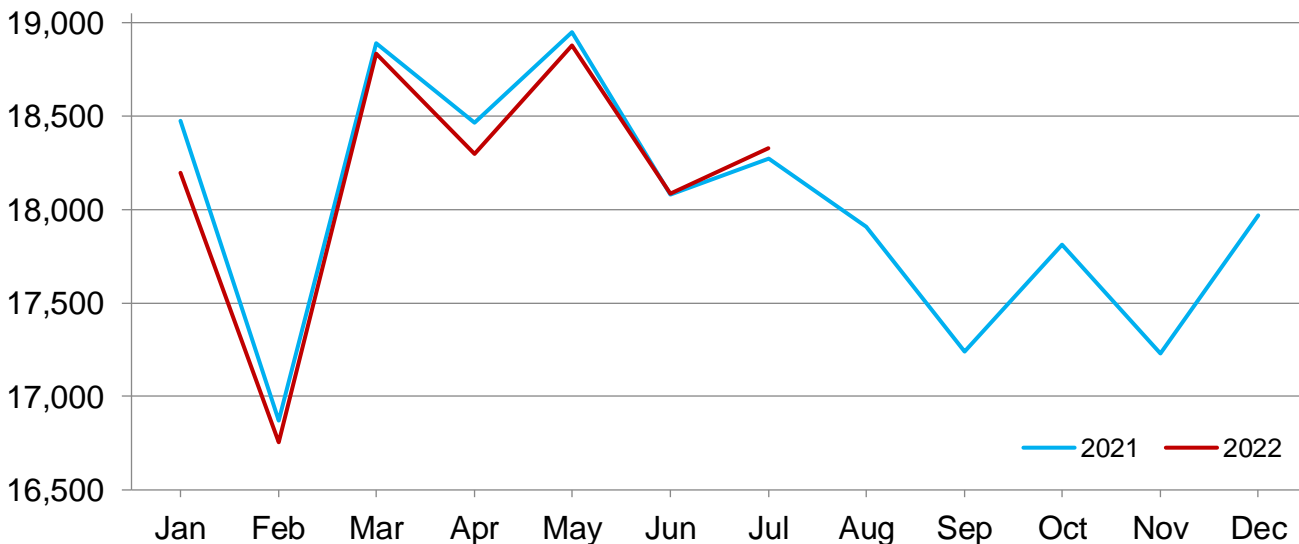
**Milk production** in the United States during July totaled 19.1 billion pounds, up 0.2 percent from July 2021.

**Production per cow** in the United States averaged 2,033 pounds for July, 19 pounds above July 2021.

**The number of milk cows** on farms in the United States was 9.42 million head, 67,000 head less than July 2021, but 1,000 head more than June 2022.

## Monthly Milk Production - 24 Selected States

Million pounds



## Milk Cows and Production by Quarter – United States: 2021-2022

[May not add due to rounding. Blank data cells indicate estimation period has not yet begun]

Quarter	Milk cows <sup>1</sup>		Milk per cow <sup>2</sup>		Milk production <sup>2</sup>		Change from 2021
	2021	2022	2021	2022	2021	2022	
	(1,000 head)	(1,000 head)	(pounds)	(pounds)	(million pounds)	(million pounds)	(percent)
January-March .....	9,466	9,384	6,005	6,000	56,847	56,305	-1.0
April-June .....	9,503	9,413	6,119	6,144	58,147	57,838	-0.5
July-September .....	9,442		5,914		55,836		
October-December .....	9,381		5,909		55,428		
Annual .....	9,448		23,948		226,258		

<sup>1</sup> Includes dry cows. Excludes heifers not yet fresh.

<sup>2</sup> Excludes milk sucked by calves.

## Milk Cows and Production by Month – 24 Selected States: 2021-2022

[May not add due to rounding. Blank data cells indicate estimation period has not yet begun]

Month	Milk cows <sup>1</sup>		Milk per cow <sup>2</sup>		Milk production <sup>2</sup>		Change from 2021
	2021	2022	2021	2022	2021	2022	
	(1,000 head)	(1,000 head)	(pounds)	(pounds)	(million pounds)	(million pounds)	(percent)
January .....	8,938	8,874	2,067	2,051	18,477	18,198	-1.5
February .....	8,954	8,887	1,884	1,885	16,871	16,755	-0.7
March .....	8,970	8,909	2,106	2,114	18,888	18,835	-0.3
April .....	8,987	8,910	2,055	2,053	18,467	18,296	-0.9
May .....	8,996	8,922	2,106	2,116	18,949	18,878	-0.4
June .....	8,991	8,916	2,011	2,028	18,078	18,083	(Z)
July .....	8,983	8,917	2,034	2,055	18,272	18,326	0.3
August .....	8,939		2,004		17,910		
September .....	8,909		1,935		17,239		
October .....	8,892		2,003		17,812		
November .....	8,888		1,939		17,232		
December .....	8,880		2,024		17,971		
Annual .....	8,944		24,169		216,166		

(Z) Less than half of the unit shown.

<sup>1</sup> Includes dry cows. Excludes heifers not yet fresh.

<sup>2</sup> Excludes milk sucked by calves.

## Estimated Milk Cows and Production by Month – United States: 2021-2022

[May not add due to rounding. Blank data cells indicate estimation period has not yet begun]

Month	Milk cows <sup>1</sup>		Milk per cow <sup>2</sup>		Milk production <sup>2</sup>		Change from 2021
	2021	2022	2021	2022	2021	2022	
	(1,000 head)	(1,000 head)	(pounds)	(pounds)	(million pounds)	(million pounds)	(percent)
January .....	9,450	9,367	2,049	2,034	19,365	19,050	-1.6
February .....	9,466	9,380	1,868	1,870	17,685	17,540	-0.8
March .....	9,482	9,404	2,088	2,096	19,797	19,715	-0.4
April .....	9,500	9,405	2,037	2,036	19,350	19,153	-1.0
May .....	9,507	9,419	2,088	2,097	19,855	19,755	-0.5
June .....	9,501	9,415	1,994	2,011	18,942	18,930	-0.1
July .....	9,483	9,416	2,014	2,033	19,097	19,140	0.2
August .....	9,438		1,984		18,721		
September .....	9,405		1,916		18,018		
October .....	9,387		1,984		18,623		
November .....	9,382		1,920		18,015		
December .....	9,373		2,005		18,790		
Annual .....	9,448		23,948		226,258		

<sup>1</sup> Includes dry cows. Excludes heifers not yet fresh.

<sup>2</sup> Excludes milk sucked by calves.

## Milk Cows and Production – 24 Selected States: July 2021 and 2022

[May not add due to rounding]

State	Milk cows <sup>1</sup>		Milk per cow <sup>2</sup>		Milk production <sup>2</sup>		Change from 2021
	2021	2022	2021	2022	2021	2022	
	(1,000 head)	(1,000 head)	(pounds)	(pounds)	(million pounds)	(million pounds)	(percent)
Arizona .....	198	199	1,905	1,905	377	379	0.5
California .....	1,719	1,723	2,000	2,040	3,438	3,515	2.2
Colorado .....	203	207	2,225	2,225	452	461	2.0
Florida .....	108	96	1,620	1,615	175	155	-11.4
Georgia .....	82	92	1,780	1,780	146	164	12.3
Idaho .....	654	656	2,190	2,215	1,432	1,453	1.5
Illinois .....	83	80	1,770	1,780	147	142	-3.4
Indiana .....	197	185	1,970	1,980	388	366	-5.7
Iowa .....	228	234	2,065	2,075	471	486	3.2
Kansas .....	172	174	2,005	2,000	345	348	0.9
Michigan .....	445	426	2,320	2,330	1,032	993	-3.8
Minnesota .....	462	450	1,945	1,975	899	889	-1.1
New Mexico .....	321	289	2,000	2,040	642	590	-8.1
New York .....	630	623	2,120	2,145	1,336	1,336	-
Ohio .....	260	249	1,870	1,875	486	467	-3.9
Oregon .....	125	126	1,800	1,800	225	227	0.9
Pennsylvania .....	475	467	1,795	1,810	853	845	-0.9
South Dakota .....	159	179	1,970	1,980	313	354	13.1
Texas .....	625	650	2,085	2,125	1,303	1,381	6.0
Utah .....	97	94	2,000	1,995	194	188	-3.1
Vermont .....	120	117	1,825	1,835	219	215	-1.8
Virginia .....	73	69	1,650	1,675	120	116	-3.3
Washington .....	269	260	2,045	2,055	550	534	-2.9
Wisconsin .....	1,278	1,272	2,135	2,140	2,729	2,722	-0.3
24-State Total .....	8,983	8,917	2,034	2,055	18,272	18,326	0.3

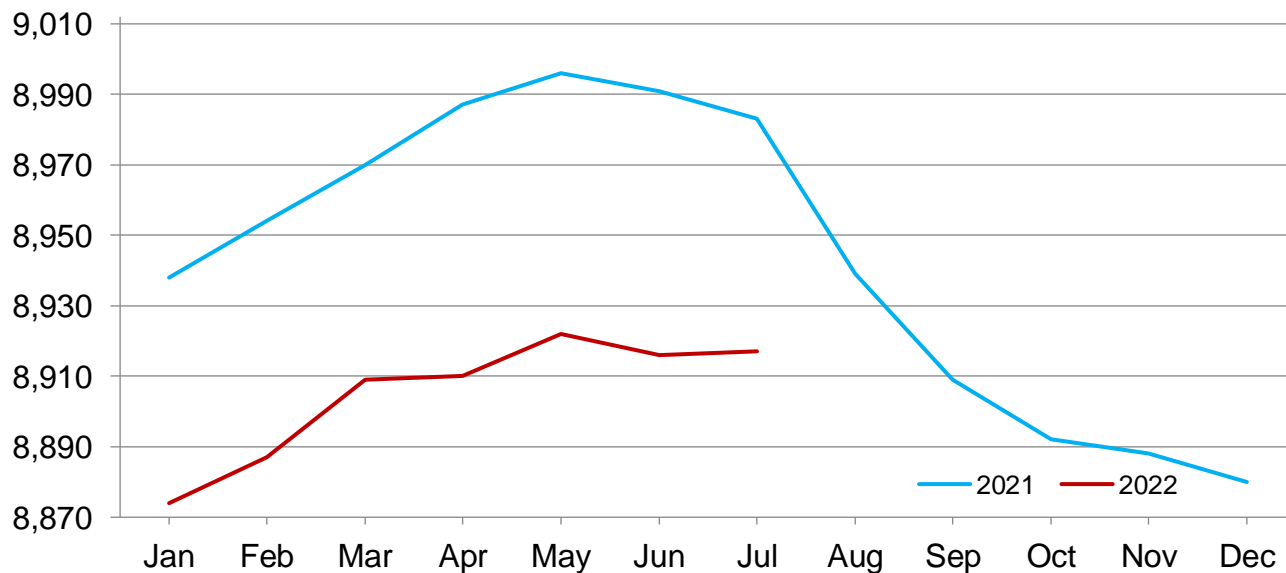
- Represents zero.

<sup>1</sup> Includes dry cows. Excludes heifers not yet fresh.

<sup>2</sup> Excludes milk sucked by calves.

## Monthly Milk Cows - 24 Selected States

Thousand head



Milk Production (August 2022)

USDA, National Agricultural Statistics Service

## Milk Cows and Production – 24 Selected States: June 2021 and 2022

[May not add due to rounding]

	Milk cows <sup>1</sup>		Milk per cow <sup>2</sup>		Milk production <sup>2</sup>		Change from 2021
	2021	2022	2021	2022	2021	2022	
	(1,000 head)	(1,000 head)	(pounds)	(pounds)	(million pounds)	(million pounds)	(percent)
Arizona .....	200	199	2,025	2,015	405	401	-1.0
California .....	1,719	1,722	2,010	2,015	3,455	3,470	0.4
Colorado .....	203	207	2,145	2,155	435	446	2.5
Florida .....	110	96	1,690	1,690	186	162	-12.9
Georgia .....	82	92	1,830	1,805	150	166	10.7
Idaho .....	654	655	2,130	2,145	1,393	1,405	0.9
Illinois .....	83	80	1,800	1,790	149	143	-4.0
Indiana .....	197	185	2,000	2,000	394	370	-6.1
Iowa .....	228	234	2,025	2,050	462	480	3.9
Kansas .....	173	174	1,920	1,970	332	343	3.3
Michigan .....	445	427	2,270	2,280	1,010	974	-3.6
Minnesota .....	462	450	1,895	1,935	875	871	-0.5
New Mexico .....	326	289	2,070	2,050	675	592	-12.3
New York .....	630	623	2,085	2,105	1,314	1,311	-0.2
Ohio .....	260	249	1,840	1,840	478	458	-4.2
Oregon .....	126	126	1,755	1,760	221	222	0.5
Pennsylvania .....	475	467	1,780	1,800	846	841	-0.6
South Dakota .....	157	179	1,910	1,940	300	347	15.7
Texas .....	624	648	2,055	2,115	1,282	1,371	6.9
Utah .....	97	94	1,975	1,975	192	186	-3.1
Vermont .....	119	117	1,805	1,805	215	211	-1.9
Virginia .....	73	70	1,655	1,660	121	116	-4.1
Washington .....	273	261	2,010	2,015	549	526	-4.2
Wisconsin .....	1,275	1,272	2,070	2,100	2,639	2,671	1.2
24-State Total .....	8,991	8,916	2,011	2,028	18,078	18,083	(Z)

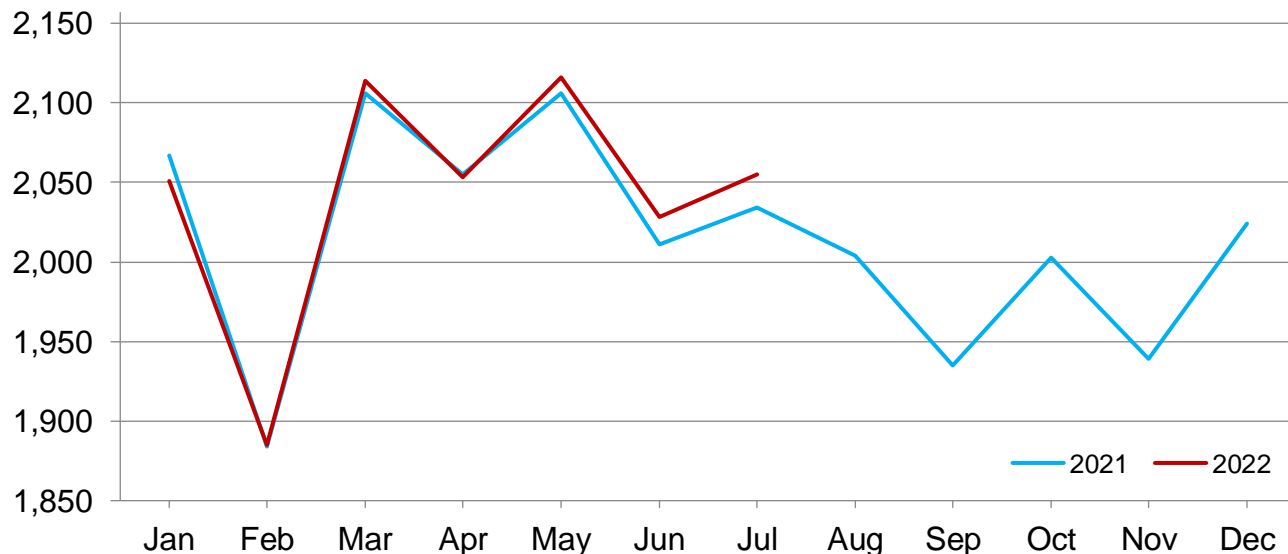
(Z) Less than half of the unit shown.

<sup>1</sup> Includes dry cows. Excludes heifers not yet fresh.

<sup>2</sup> Excludes milk sucked by calves.

## Monthly Milk Per Cow - 24 Selected States

Pounds



## Statistical Methodology

**Survey Procedures:** Primary data used to determine these estimates were obtained from a sample of producers. Individual States maintain a list of all known milk producers and information on the size of their herd. States use all known sources of producers to ensure that their lists are as complete as possible. Generally, all large producers and a sample of small producers are included in the survey. Questionnaires are mailed to producers near the end of the month to obtain data for the first day of the month. Additional reports are obtained by telephone, as needed, to supplement the mail response. Where feasible, States utilize state and federal administrative data to estimate milk production. This eliminates duplication of data gathering by different government agencies such as Agricultural Marketing Service (AMS) Dairy Market News. Indications of milk cow inventory are also obtained in the January Cattle Survey.

**Estimation Procedures:** Regional Field Offices prepare these estimates by using a combination of survey indications, historic trends, and any available administrative data. Individual State estimates are reviewed by the Agricultural Statistics Board for reasonableness.

**Revision Policy:** Milk production, milk per cow, and number of milk cows are subject to revision the following month after initial publication for monthly States or the following quarter for the quarterly States. Normally, administrative data from Federal Market Orders, State Departments of Agriculture, or other sources are the main basis for revisions. However, administrative data for all States may not be available in time for these revisions. Estimates are again subject to revisions in February each year based on additional administrative data. In the event that additional changes are necessary, a third revision is possible in February the following year. Estimates are again reviewed after data from the five-year Census of Agriculture are available. No revisions are made after that date.

**Reliability:** Since all operations with dairy animals are not included in the sample, survey estimates are subject to sampling variability. Survey results are also subject to non-sampling errors such as omissions, duplications, and mistakes in reporting, recording, and processing the data. The effects of these errors cannot be measured directly. They are minimized through rigid quality controls in the data collection process and through a careful review of all reported data for consistency and reasonableness.

To assist users in evaluating the reliability of the estimates in this report, the "Root Mean Square Error" is shown for selected items in the table below. The "Root Mean Square Error" is a statistical measure based on past performance and is computed using the differences between first and final estimates. The "Root Mean Square Error" for the 24 State milk production estimates over the past 24 months is 0.3 percent. This means that chances are 2 out of 3 that the final estimate will not be above or below the current estimate of 18.3 billion pounds by more than 0.3 percent. Chances are 9 out of 10 that the difference will not exceed 0.6 percent.

### Reliability of Monthly Milk Production Estimates

[Based on data for the past 24 months]

Item	Root mean square error	90 percent confidence level	Difference between first and latest estimate				
			Average	Smallest	Largest	Months	
						Below latest	Above latest
	(percent)	(percent)	(1,000)	(1,000)	(1,000)	(number)	(number)
Milk production .....	0.3	0.6	45	3	181	15	9
All Milk cows .....	0.2	0.3	12	1	30	15	9

## Information Contacts

Listed below are the commodity specialists in the Livestock Branch of the National Agricultural Statistics Service to contact for additional information. E-mail inquiries may be sent to [nass@usda.gov](mailto:nass@usda.gov).

Travis Averill, Chief, Livestock Branch .....	(202) 692-0069
Scott Hollis, Head, Livestock Section .....	(202) 690-2424
Sherry Bertramsen – Livestock Slaughter .....	(202) 690-8632
Ryan Cowen – Cattle, Cattle on Feed .....	(202) 720-3040
Anthony Fischer – Hogs and Pigs .....	(202) 720-3106
Logan Hartley-Sanguinett – Sheep and Goats .....	(202) 690-3236
Mike Miller – Milk Production and Milk Cows .....	(202) 720-3278
Suzanne Richards – Dairy Products .....	(202) 720-4448

## Access to NASS Reports

For your convenience, you may access NASS reports and products the following ways:

- All reports are available electronically, at no cost, on the NASS web site: [www.nass.usda.gov](http://www.nass.usda.gov).
- Both national and state specific reports are available via a free e-mail subscription. To set-up this free subscription, visit [www.nass.usda.gov](http://www.nass.usda.gov) and click on “National” or “State” in upper right corner above “search” box to create an account and select the reports you would like to receive.
- Cornell’s Mann Library has launched a new website housing NASS’s and other agency’s archived reports. The new website, <https://usda.library.cornell.edu>. All email subscriptions containing reports will be sent from the new website, <https://usda.library.cornell.edu>. To continue receiving the reports via e-mail, you will have to go to the new website, create a new account and re-subscribe to the reports. If you need instructions to set up an account or subscribe, they are located at: <https://usda.library.cornell.edu/help>. You should whitelist [notifications@usda-esmis.library.cornell.edu](mailto:notifications@usda-esmis.library.cornell.edu) in your email client to avoid the emails going into spam/junk folders.

For more information on NASS surveys and reports, call the NASS Agricultural Statistics Hotline at (800) 727-9540, 7:30 a.m. to 4:00 p.m. ET, or e-mail: [nass@usda.gov](mailto:nass@usda.gov).

The U.S. Department of Agriculture (USDA) prohibits discrimination against its customers, employees, and applicants for employment on the basis of race, color, national origin, age, disability, sex, gender identity, religion, reprisal, and where applicable, political beliefs, marital status, familial or parental status, sexual orientation, or all or part of an individual's income is derived from any public assistance program, or protected genetic information in employment or in any program or activity conducted or funded by the Department. (Not all prohibited bases will apply to all programs and/or employment activities.)

If you wish to file a Civil Rights program complaint of discrimination, complete the [USDA Program Discrimination Complaint Form](#) (PDF), found online at [www.ascr.usda.gov/filing-program-discrimination-complaint-usda-customer](http://www.ascr.usda.gov/filing-program-discrimination-complaint-usda-customer), or at any USDA office, or call (866) 632-9992 to request the form. You may also write a letter containing all of the information requested in the form. Send your completed complaint form or letter to us by mail at U.S. Department of Agriculture, Director, Office of Adjudication, 1400 Independence Avenue, S.W., Washington, D.C. 20250-9410, by fax (202) 690-7442 or email at [program.intake@usda.gov](mailto:program.intake@usda.gov).