



Released November 21, 2025, by the National Agricultural Statistics Service (NASS), Agricultural Statistics Board, United States Department of Agriculture (USDA).

October Milk Production up 3.9 Percent

Milk production in the 24 major States during October totaled 18.7 billion pounds, up 3.9 percent from October 2024. September revised production, at 18.2 billion pounds, was up 4.0 percent from September 2024. The September revision represented a decrease of 34 million pounds or 0.2 percent from last month's preliminary production estimate.

Production per cow in the 24 major States averaged 2,049 pounds for October, 30 pounds above October 2024.

The number of milk cows on farms in the 24 major States was 9.14 million head, 211,000 head more than October 2024, but 7,000 head less than September 2025.

October Milk Production in the United States up 3.7 Percent

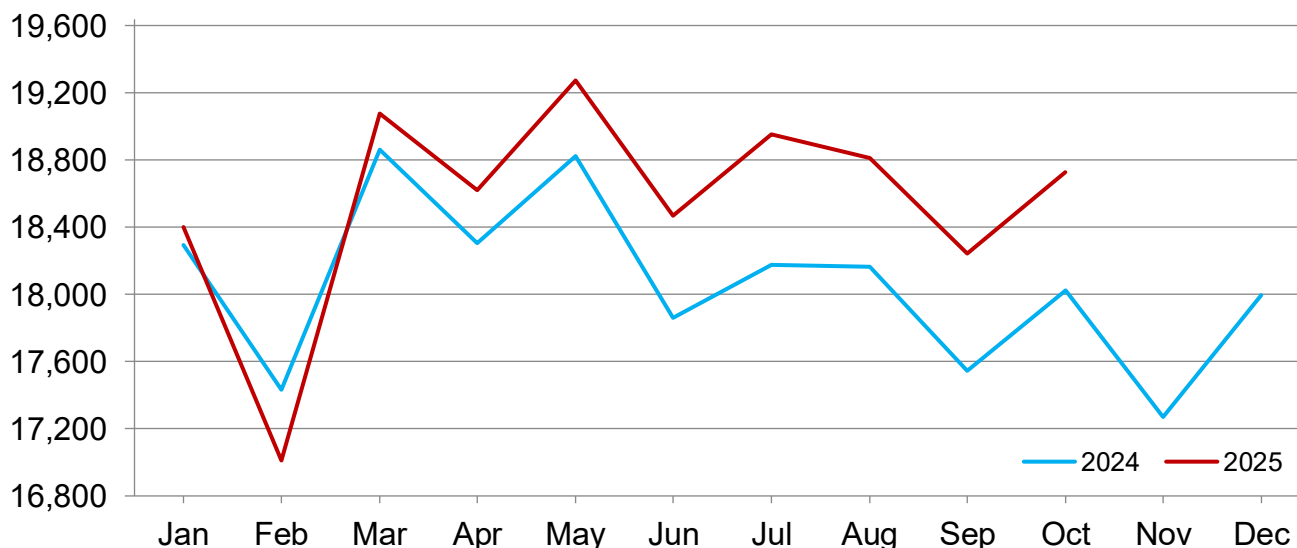
Milk production in the United States during October totaled 19.5 billion pounds, up 3.7 percent from October 2024.

Production per cow in the United States averaged 2,033 pounds for October, 29 pounds above October 2024.

The number of milk cows on farms in the United States was 9.58 million head, 208,000 head more than October 2024, but 6,000 head less than September 2025.

Monthly Milk Production - 24 Selected States

Million pounds



Milk Cows and Production by Quarter – United States: 2024-2025

[May not add due to rounding. Blank data cells indicate estimation period has not yet begun]

Quarter	Milk cows ¹		Milk per cow ²		Milk production ²		
	2024	2025	2024	2025	2024	2025	Change from 2024
	(1,000 head)	(1,000 head)	(pounds)	(pounds)	(million pounds)	(million pounds)	(percent)
January-March	9,338	9,401	6,098	6,039	56,943	56,773	-0.3
April-June	9,330	9,458	6,145	6,206	57,333	58,697	2.4
July-September	9,341	9,540	6,004	6,099	56,085	58,187	3.7
October-December	9,360		5,930		55,507		
Annual	9,342		24,178		225,868		

¹ Includes dry cows. Excludes heifers not yet fresh.

² Excludes milk sucked by calves.

Milk Cows and Production by Month – 24 Selected States: 2024-2025

[May not add due to rounding. Blank data cells indicate estimation period has not yet begun]

Month	Milk cows ¹		Milk per cow ²		Milk production ²		
	2024	2025	2024	2025	2024	2025	Change from 2024
	(1,000 head)	(1,000 head)	(pounds)	(pounds)	(million pounds)	(million pounds)	(percent)
January	8,871	8,950	2,062	2,056	18,293	18,401	0.6
February	8,888	8,955	1,961	1,900	17,432	17,011	-2.4
March	8,892	8,976	2,121	2,125	18,861	19,075	1.1
April	8,890	8,998	2,059	2,069	18,305	18,618	1.7
May	8,886	9,026	2,118	2,135	18,821	19,273	2.4
June	8,878	9,032	2,012	2,045	17,861	18,470	3.4
July	8,886	9,068	2,045	2,090	18,175	18,951	4.3
August	8,903	9,108	2,040	2,065	18,164	18,812	3.6
September	8,911	9,145	1,969	1,995	17,544	18,245	4.0
October	8,927	9,138	2,019	2,049	18,025	18,727	3.9
November	8,919		1,936		17,270		
December	8,916		2,018		17,996		
Annual	8,897		24,362		216,747		

¹ Includes dry cows. Excludes heifers not yet fresh.

² Excludes milk sucked by calves.

Estimated Milk Cows and Production by Month – United States: 2024-2025

[May not add due to rounding. Blank data cells indicate estimation period has not yet begun]

Month	Milk cows ¹		Milk per cow ²		Milk production ²		
	2024	2025	2024	2025	2024	2025	Change from 2024
	(1,000 head)	(1,000 head)	(pounds)	(pounds)	(million pounds)	(million pounds)	(percent)
January	9,324	9,390	2,047	2,042	19,083	19,173	0.5
February	9,343	9,395	1,946	1,887	18,185	17,726	-2.5
March	9,347	9,417	2,105	2,110	19,675	19,874	1.0
April	9,336	9,436	2,044	2,055	19,082	19,390	1.6
May	9,331	9,466	2,103	2,120	19,624	20,071	2.3
June	9,323	9,472	1,998	2,031	18,627	19,236	3.3
July	9,326	9,499	2,029	2,073	18,918	19,688	4.1
August	9,344	9,541	2,023	2,048	18,906	19,543	3.4
September	9,353	9,581	1,952	1,978	18,261	18,956	3.8
October	9,367	9,575	2,004	2,033	18,775	19,470	3.7
November	9,359		1,922		17,988		
December	9,355		2,004		18,744		
Annual	9,342		24,178		225,868		

¹ Includes dry cows. Excludes heifers not yet fresh.

² Excludes milk sucked by calves.

Milk Cows and Production – 24 Selected States: October 2024 and 2025

[May not add due to rounding]

State	Milk cows ¹		Milk per cow ²		Milk production ²		
	2024	2025	2024	2025	2024	2025	Change from 2024
	(1,000 head)	(1,000 head)	(pounds)	(pounds)	(million pounds)	(million pounds)	(percent)
Arizona	190	200	1,960	1,960	372	392	5.4
California	1,709	1,713	1,870	1,995	3,196	3,417	6.9
Colorado	206	211	2,185	2,180	450	460	2.2
Florida	98	100	1,570	1,675	154	168	9.1
Georgia	85	89	1,930	2,000	164	178	8.5
Idaho	676	725	2,145	2,140	1,450	1,552	7.0
Illinois	77	79	1,780	1,790	137	141	2.9
Indiana	189	194	1,990	2,010	376	387	2.9
Iowa	244	246	2,080	2,085	508	513	1.0
Kansas	181	218	2,005	2,020	363	440	21.2
Michigan	439	459	2,330	2,325	1,023	1,067	4.3
Minnesota	442	452	1,965	1,980	869	895	3.0
New Mexico	242	235	2,055	2,020	497	475	-4.4
New York	630	648	2,130	2,155	1,342	1,396	4.0
Ohio	251	251	1,880	1,880	472	472	-
Oregon	118	123	1,760	1,770	208	218	4.8
Pennsylvania	465	460	1,725	1,735	802	798	-0.5
South Dakota	215	235	1,990	1,990	428	468	9.3
Texas	675	701	2,225	2,205	1,502	1,546	2.9
Utah	91	98	1,935	1,945	176	191	8.5
Vermont	113	116	1,840	1,840	208	213	2.4
Virginia	66	67	1,705	1,705	113	114	0.9
Washington	259	238	2,000	2,015	518	480	-7.3
Wisconsin	1,266	1,280	2,130	2,145	2,697	2,746	1.8
24-State Total	8,927	9,138	2,019	2,049	18,025	18,727	3.9

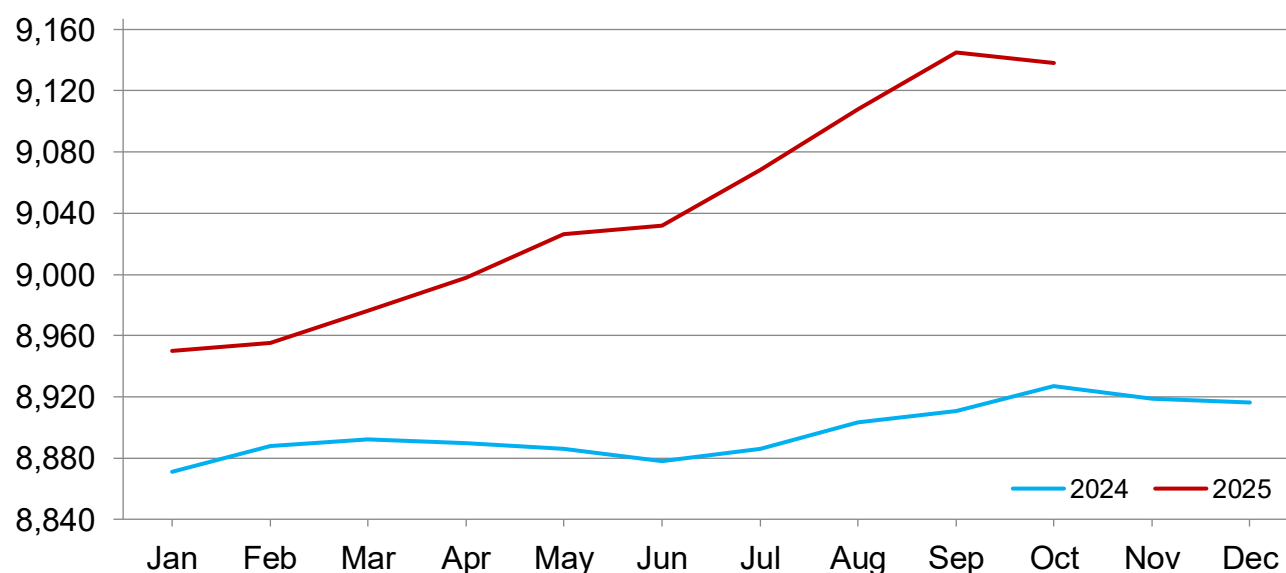
- Represents zero.

¹ Includes dry cows. Excludes heifers not yet fresh.

² Excludes milk sucked by calves.

Monthly Milk Cows - 24 Selected States

Thousand head



Milk Cows and Production – 24 Selected States: September 2024 and 2025

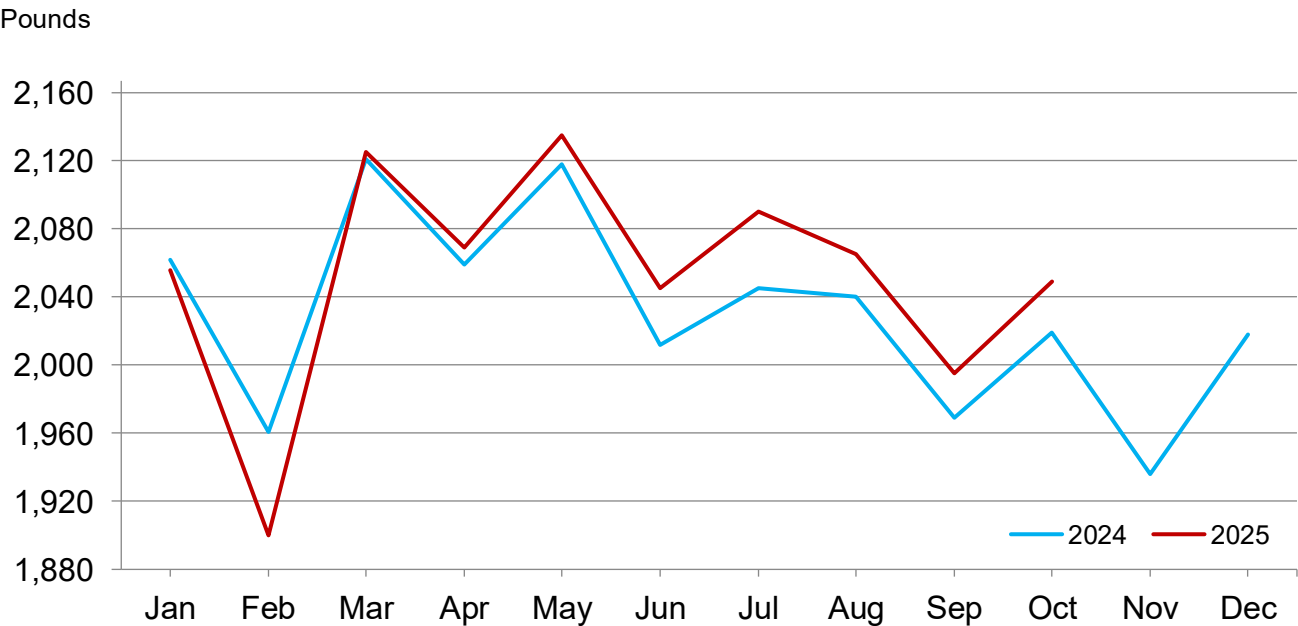
[May not add due to rounding]

State	Milk cows ¹		Milk per cow ²		Milk production ²		Change from 2024
	2024	2025	2024	2025	2024	2025	
	(1,000 head)	(1,000 head)	(pounds)	(pounds)	(million pounds)	(million pounds)	(percent)
Arizona	192	200	1,850	1,840	355	368	3.7
California	1,708	1,713	1,880	1,920	3,211	3,289	2.4
Colorado	202	211	2,140	2,135	432	450	4.2
Florida	98	99	1,520	1,615	149	160	7.4
Georgia	85	89	1,800	1,885	153	168	9.8
Idaho	672	725	2,105	2,125	1,415	1,541	8.9
Illinois	77	79	1,700	1,725	131	136	3.8
Indiana	189	193	1,930	1,950	365	376	3.0
Iowa	243	246	2,000	2,015	486	496	2.1
Kansas	181	218	1,960	1,965	355	428	20.6
Michigan	438	460	2,250	2,265	986	1,042	5.7
Minnesota	442	452	1,920	1,935	849	875	3.1
New Mexico	240	237	1,970	1,970	473	467	-1.3
New York	630	648	2,080	2,100	1,310	1,361	3.9
Ohio	251	252	1,820	1,820	457	459	0.4
Oregon	118	123	1,710	1,725	202	212	5.0
Pennsylvania	465	460	1,675	1,700	779	782	0.4
South Dakota	215	235	1,935	1,945	416	457	9.9
Texas	670	706	2,085	2,125	1,397	1,500	7.4
Utah	91	98	1,910	1,920	174	188	8.0
Vermont	113	116	1,750	1,785	198	207	4.5
Virginia	66	67	1,645	1,665	109	112	2.8
Washington	259	238	1,990	2,005	515	477	-7.4
Wisconsin	1,266	1,280	2,075	2,105	2,627	2,694	2.6
24-State Total	8,911	9,145	1,969	1,995	17,544	18,245	4.0

¹ Includes dry cows. Excludes heifers not yet fresh.

² Excludes milk sucked by calves.

Monthly Milk Per Cow - 24 Selected States



Statistical Methodology

Survey Procedures: Primary data used to determine these estimates were obtained from a sample of producers. Individual States maintain a list of all known milk producers and information on the size of their herd. States use all known sources of producers to ensure that their lists are as complete as possible. Generally, all large producers and a sample of small producers are included in the survey. Questionnaires are mailed to producers near the end of the month to obtain data for the first day of the month. Additional reports are obtained by telephone, as needed, to supplement the mail response. Where feasible, States utilize state and federal administrative data to estimate milk production. This eliminates duplication of data gathering by different government agencies such as Agricultural Marketing Service (AMS) Dairy Market News. Indications of milk cow inventory are also obtained in the January Cattle Survey.

Estimation Procedures: Regional Field Offices prepare these estimates by using a combination of survey indications, historic trends, and any available administrative data. Individual State estimates are reviewed by the Agricultural Statistics Board for reasonableness.

Revision Policy: Milk production, milk per cow, and number of milk cows are subject to revision the following month after initial publication for monthly States or the following quarter for the quarterly States. Normally, administrative data from Federal Market Orders, State Departments of Agriculture, or other sources are the main basis for revisions. However, administrative data for all States may not be available in time for these revisions. Estimates are again subject to revisions in February each year based on additional administrative data. In the event that additional changes are necessary, a third revision is possible in February the following year. Estimates are again reviewed after data from the five-year Census of Agriculture are available. No revisions are made after that date.

Reliability: Since all operations with dairy animals are not included in the sample, survey estimates are subject to sampling variability. Survey results are also subject to non-sampling errors such as omissions, duplications, and mistakes in reporting, recording, and processing the data. The effects of these errors cannot be measured directly. They are minimized through rigid quality controls in the data collection process and through a careful review of all reported data for consistency and reasonableness.

To assist users in evaluating the reliability of the estimates in this report, the "Root Mean Square Error" is shown for selected items in the table below. The "Root Mean Square Error" is a statistical measure based on past performance and is computed using the differences between first and final estimates. The "Root Mean Square Error" for the 24 State milk production estimates over the past 24 months is 0.4 percent. This means that chances are 2 out of 3 that the final estimate will not be above or below the current estimate of 18.7 billion pounds by more than 0.4 percent. Chances are 9 out of 10 that the difference will not exceed 0.6 percent.

Reliability of Monthly Milk Production Estimates

[Based on data for the past 24 months]

Item	Root mean square error	90 percent confidence level	Difference between first and latest estimate				
			Average	Smallest	Largest	Months	
						Below latest	Above latest
	(percent)	(percent)	(1,000)	(1,000)	(1,000)	(number)	(number)
Milk production	0.4	0.6	56	0	139	15	8
All Milk cows	0.2	0.3	12	1	33	15	9

Information Contacts

Listed below are the commodity specialists in the Livestock Branch of the National Agricultural Statistics Service to contact for additional information. E-mail inquiries may be sent to nass@usda.gov.

Travis Averill, Chief, Livestock Branch	(202) 692-0069
Sherry Bertramsen – Livestock Slaughter.....	(202) 690-8632
Tiffany Byrne – Dairy Products	(651) 440-7789
Ryan Cowen – Cattle, Cattle on Feed.....	(202) 720-3040
Kim DaPra – Milk Production.....	(202) 720-3278
Fatema Haque – Poultry Slaughter, Turkey Hatchery, Turkeys Raised.....	(202) 720-3244
Derron Martin – Catfish, Census of Aquaculture, Egg Products, Mink, Trout	(202) 690-3237
Ralph Mondesir – Hogs and Pigs	(202) 720-3106
Suzanne Richards – Cost of Pollination, Honey, Honey Bee Colonies, Sheep and Goats	(202) 720-4448
Shulonda Shaw – Capacity of Refrigerated Warehouses, Cold Storage	(202) 720-3240
Autumn Stone – Layers, Eggs	(202) 690-3676
Takiyah Walker – Broiler Hatchery, Chicken Hatchery.....	(202) 720-6147

Access to NASS Reports

For your convenience, you may access NASS reports and products the following ways:

- All reports are available electronically, at no cost, on the NASS web site: www.nass.usda.gov.
- The national specific reports are available via a free e-mail subscription. To set-up this free subscription, visit www.nass.usda.gov and click on “National” in upper right corner above “search” box to create an account and select the reports you would like to receive.
- Economics, Statistics, and Market Information (ESMIS) – National Agricultural Library (NAL) website houses NASS’s and other agency archived reports at <https://esmis.nal.usda.gov>. All email subscriptions containing reports will be sent from <https://esmis.nal.usda.gov>. To receive the reports via e-mail, you will have to go to the website, create a new account and subscribe to the reports. You should whitelist notifications@esmis.nal.usda.gov in your email client to avoid the emails going into spam/junk folders.

For more information on NASS surveys and reports, call the NASS Agricultural Statistics Hotline at (800) 727-9540, 7:30 a.m. to 4:00 p.m. ET, or e-mail: nass@usda.gov.

If you have specific questions you would like an expert to respond to, please visit our “Ask A Specialist” website at www.nass.usda.gov/Contact_Us/Ask_a_Specialist.

In accordance with Federal civil rights law and U.S. Department of Agriculture (USDA) civil rights regulations and policies, the USDA, its Agencies, offices, and employees, and institutions participating in or administering USDA programs are prohibited from discriminating based on race, color, national origin, religion, sex, disability, age, marital status, family/parental status, income derived from a public assistance program, political beliefs, or reprisal or retaliation for prior civil rights activity, in any program or activity conducted or funded by USDA (not all bases apply to all programs). Remedies and complaint filing deadlines vary by program or incident.

Persons with disabilities who require alternative means of communication for program information (e.g., Braille, large print, audiotape, American Sign Language, etc.) should contact the responsible Agency or USDA's TARGET Center at (202) 720-2600 (voice and TTY) or contact USDA through the Federal Relay Service at (800) 877-8339. Additionally, program information may be made available in languages other than English.

To file a program discrimination complaint, complete the USDA Program Discrimination Complaint Form, AD-3027, found online at [How to File a Program Discrimination Complaint](#) and at any USDA office or write a letter addressed to USDA and provide in the letter all of the information requested in the form. To request a copy of the complaint form, call (866) 632-9992. Submit your completed form or letter to USDA by: (1) mail: U.S. Department of Agriculture, Office of the Assistant Secretary for Civil Rights, 1400 Independence Avenue, SW, Washington, D.C. 20250-9410; (2) fax: (202) 690-7442; or (3) email: program.intake@usda.gov.

USDA is an equal opportunity provider, employer, and lender.