



ISSN: 1949-1964

Released January 14, 2020, by the National Agricultural Statistics Service (NASS), Agricultural Statistics Board, United States Department of Agriculture (USDA).

Eggs in Incubators on January 1 Up 2 Percent from Last Year

Turkey eggs in incubators on January 1, 2020 in the United States totaled 28.3 million, up 2 percent from January 1, 2019. Eggs in incubators were up 6 percent from the December 1, 2019 total of 26.6 million eggs.

Poults Hatched During December Down 3 Percent from Last Year

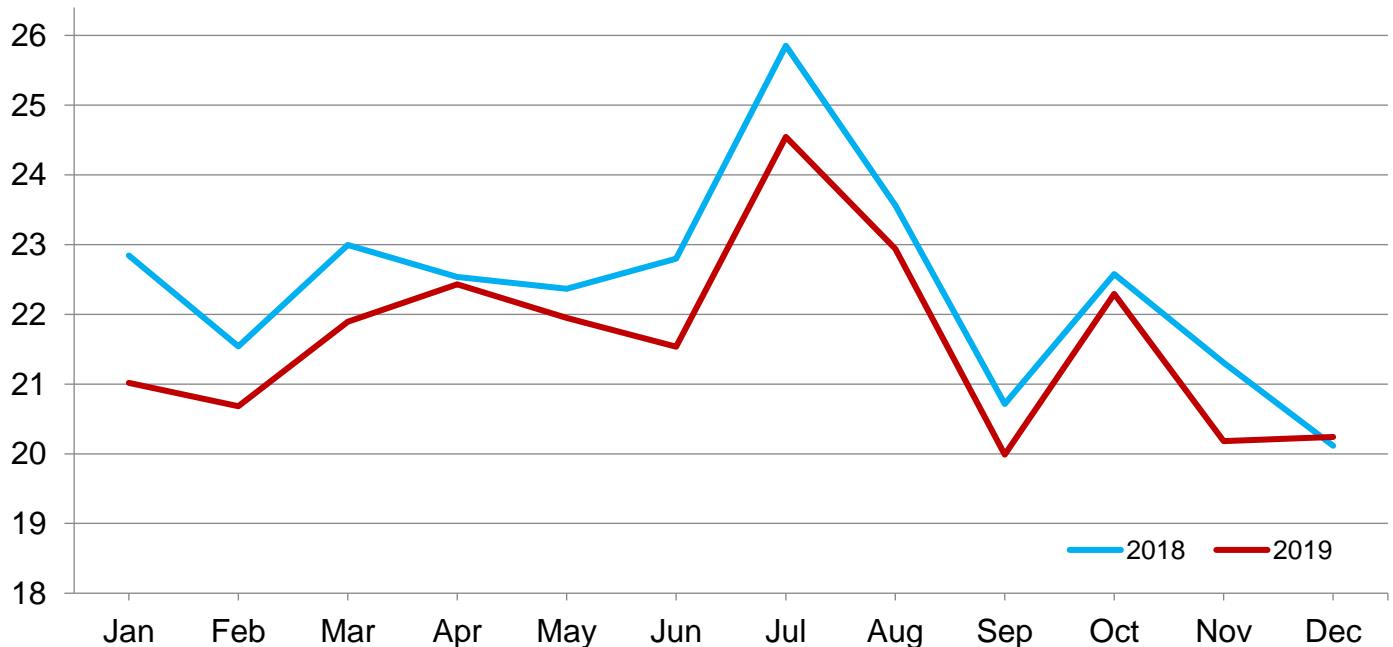
Turkey poults hatched during December 2019 in the United States totaled 22.4 million, down 3 percent from December 2018. Poults hatched were down slightly from the November 2019 total of 22.5 million poults.

Net Poults Placed During December Up 1 Percent from Last Year

The 20.0 million net poults placed during December 2019 in the United States were up 1 percent from the number placed during the same month a year earlier. Net poult placements were up slightly from the November 2019 total of 20.0 million.

Net Poult Placements – United States

Million poults



Eggs in Incubators and Poults Hatched by Month – United States: 2018-2020

[Blank data cells indicate estimation period has not yet begun]

Month	Eggs in incubators first of month		Percent of previous year	Poults hatched entire month		Percent of previous year
	2018-2019	2019-2020		2018-2019	2019-2020	
	(1,000 eggs)	(1,000 eggs)	(percent)	(1,000 poults)	(1,000 poults)	(percent)
September	27,532	26,780	97	22,443	22,582	101
October	28,750	29,442	102	24,295	24,904	103
November	30,418	26,958	89	29,089	22,462	77
December	28,492	26,619	93	23,176	22,421	97
January	27,831	28,340	102	23,287		
February	28,052			22,495		
March	28,049			23,884		
April	28,218			24,001		
May	28,018			23,570		
June	27,929			22,843		
July	28,989			25,234		
August	29,266			24,314		

Net Poultry Placements by Month – United States: 2018-2020

[Includes imports and excludes exports. Blank data cells indicate estimation period has not yet begun]

Month	Total all breeds		Percent of previous year	Cumulative total		Percent of previous year
	2018-2019	2019-2020		2018-2019	2019-2020	
	(1,000 poults)	(1,000 poults)	(percent)	(1,000 poults)	(1,000 poults)	(percent)
September	20,512	19,788	96	20,512	19,788	96
October	22,377	22,094	99	42,889	41,882	98
November	21,108	19,983	95	63,997	61,865	97
December	19,915	20,041	101	83,912	81,906	98
January	20,817			104,729		
February	20,480			125,209		
March	21,691			146,900		
April	22,232			169,132		
May	21,750			190,882		
June	21,336			212,218		
July	24,344			236,562		
August	22,741			259,303		

Statistical Methodology

Survey Procedures: Data for turkey hatchery estimates are collected from all known turkey hatcheries. Individual NASS regional field offices maintain a list of all known turkey hatcheries and use known sources of hatcheries to update their lists. Approximately 40 hatcheries in 20 states are contacted each month. All known turkey hatcheries hatching 15,000 or more poults annually are mailed a questionnaire as close to the first of the month as possible. Adequate time is given to respond via mail, fax, or electronic data reporting. Those that do not respond are contacted by phone. Care is exercised to ensure that all hatcheries are accounted for in the estimate.

Estimating Procedures: Sound statistical methodology is employed to derive the estimates from reported data. All data are analyzed for unusual values. Data from each operation are compared to their own past operating profile and to trends from similar operations. Data for missing operations were estimated based on similar operations or historical data. NASS regional field offices prepare these estimates by using a combination of survey indications and historic trends. Individual State estimates are reviewed by the Agricultural Statistics Board for reasonableness. Individual hatchery data are summed to State, regional, and United States totals. Only United States level estimates are published due to the limited number of hatcheries involved. The Net Poult Placement data include imported poults and exclude exported poults.

Cumulative net poult placements beginning on September 1 and ending on August 31 are shown in the monthly *Turkey Hatchery* report. This time period corresponds with the placements of poults which will reach maturity and be available for slaughter during the calendar year.

Revision Policy: Revisions are generally the result of late or corrected data. Revisions to the previous month are published in the monthly *Turkey Hatchery* report, while annual revisions are published in the *Hatchery Production - Annual Summary* report in April.

Reliability: Turkey hatchery estimates are based on a census of all known operating hatcheries and therefore, have no sampling error. However, estimates are subject to errors such as omission, duplication, and mistakes in reporting, recording, and processing the data. While these errors cannot be measured directly, they are minimized through strict quality controls in the data collection process and through a careful review of all reported data for consistency and reasonableness.

To assist in evaluating the reliability of the estimates in this report, the “Root Mean Square Error” is shown for selected items in the following table. The “Root Mean Square Error” is a statistical measure based on past performance and is computed using the differences between first and final estimates. The “Root Mean Square Error” for turkey eggs in incubators on the first day of the month over the past 24 months is 1.3 percent. This means that chances are 2 out of 3 that the final estimate will not be above or below the current estimate of 28.3 million eggs by more than 1.3 percent. Chances are 9 out of 10 that the difference will not exceed 2.3 percent.

Reliability of January Turkey Hatchery Estimates

[Based on data for the past 24 months]

Item	Root mean square error	90 percent confidence level	Difference between first and latest estimate				
			Average	Smallest	Largest	Months	
						Below latest	Above latest
	(percent)	(percent)	(1,000)	(1,000)	(1,000)	(number)	(number)
Eggs in incubators	1.3	2.3	246	0	1,146	16	7
Poults hatched	0.9	1.5	136	0	637	14	8
Net poult placements	1.5	2.6	239	0	752	13	10

Information Contacts

Listed below are the commodity specialists in the Livestock Branch of the National Agricultural Statistics Service to contact for additional information. E-mail inquiries may be sent to nass@nass.usda.gov

Travis Averill, Chief, Livestock Branch	(202) 692-0069
Tony Dorn, Head, Poultry and Specialty Commodities Section	(202) 690-3223
Holly Brenize – Poultry Slaughter.....	(202) 720-0585
Alissa Cowell-Mytar – Cold Storage, Capacity of Refrigerated Warehouses	(202) 720-4751
Liana Cuffman – Catfish and Trout, Mink, Census of Aquaculture	(202) 720-8784
Fatema Haque – Turkey Hatchery, Turkeys Raised	(202) 690-3244
Kim Linonis – Layers, Eggs, Egg Products	(202) 690-3676
Adam Peters – Honey, Honey Bee Colonies	(202) 690-3237
Takiyah Walker – Broiler Hatchery, Chicken Hatchery	(202) 720-6147

Access to NASS Reports

For your convenience, you may access NASS reports and products the following ways:

- All reports are available electronically, at no cost, on the NASS web site: www.nass.usda.gov
- Both national and state specific reports are available via a free e-mail subscription. To set-up this free subscription, visit www.nass.usda.gov and click on “National” or “State” in upper right corner above “search” box to create an account and select the reports you would like to receive.
- Cornell’s Mann Library has launched a new website housing NASS’s and other agency’s archived reports. The new website, <https://usda.library.cornell.edu>. All email subscriptions containing reports will be sent from the new website, <https://usda.library.cornell.edu>. To continue receiving the reports via e-mail, you will have to go to the new website, create a new account and re-subscribe to the reports. If you need instructions to set up an account or subscribe, they are located at: <https://usda.library.cornell.edu/help>. You should whitelist notifications@usda-esmis.library.cornell.edu in your email client to avoid the emails going into spam/junk folders.

For more information on NASS surveys and reports, call the NASS Agricultural Statistics Hotline at (800) 727-9540, 7:30 a.m. to 4:00 p.m. ET, or e-mail: nass@usda.gov.

The U.S. Department of Agriculture (USDA) prohibits discrimination against its customers, employees, and applicants for employment on the basis of race, color, national origin, age, disability, sex, gender identity, religion, reprisal, and where applicable, political beliefs, marital status, familial or parental status, sexual orientation, or all or part of an individual's income is derived from any public assistance program, or protected genetic information in employment or in any program or activity conducted or funded by the Department. (Not all prohibited bases will apply to all programs and/or employment activities.)

If you wish to file a Civil Rights program complaint of discrimination, complete the [USDA Program Discrimination Complaint Form](#) (PDF), found online at www.ascr.usda.gov/filing-program-discrimination-complaint-usda-customer, or at any USDA office, or call (866) 632-9992 to request the form. You may also write a letter containing all of the information requested in the form. Send your completed complaint form or letter to us by mail at U.S. Department of Agriculture, Director, Office of Adjudication, 1400 Independence Avenue, S.W., Washington, D.C. 20250-9410, by fax (202) 690-7442 or email at program.intake@usda.gov.

USDA's Agricultural Outlook Forum

96th Annual The Innovation Imperative: *Shaping the Future of Agriculture*

February 21-22, 2020 • Crystal Gateway Marriott Hotel, Arlington, Virginia

The 2020 Agricultural Outlook Forum

[“Program at a Glance”](#)

Join us February 20-21, 2020
Crystal Gateway Marriott Hotel Arlington, Virginia

Register [Here](#)

The Agricultural Outlook Forum

- USDA's largest annual gathering and the agricultural sector's premiere event
- Brings together more than 1,500 sector leaders and professionals to connect and discuss current and key emerging issues in agriculture
- More than 30 sessions covering commodity markets and outlook, international trade, agricultural policy, as well as cutting edge topics that will influence the future of agriculture



For More Information, please contact the Forum Coordinator [Mirvat Sewadeh](#) at 202-720-5447