



ISSN: 1949-1964

Released September 14, 2017, by the National Agricultural Statistics Service (NASS), Agricultural Statistics Board, United States Department of Agriculture (USDA).

## Eggs in Incubators on September 1 Down Slightly from Last Year

Turkey eggs in incubators on September 1, 2017, in the United States totaled 28.9 million, down slightly from September 1, 2016. Eggs in incubators were down 3 percent from the August 1, 2017 total of 29.7 million eggs.

## Poults Hatched During August Up 2 Percent from Last Year

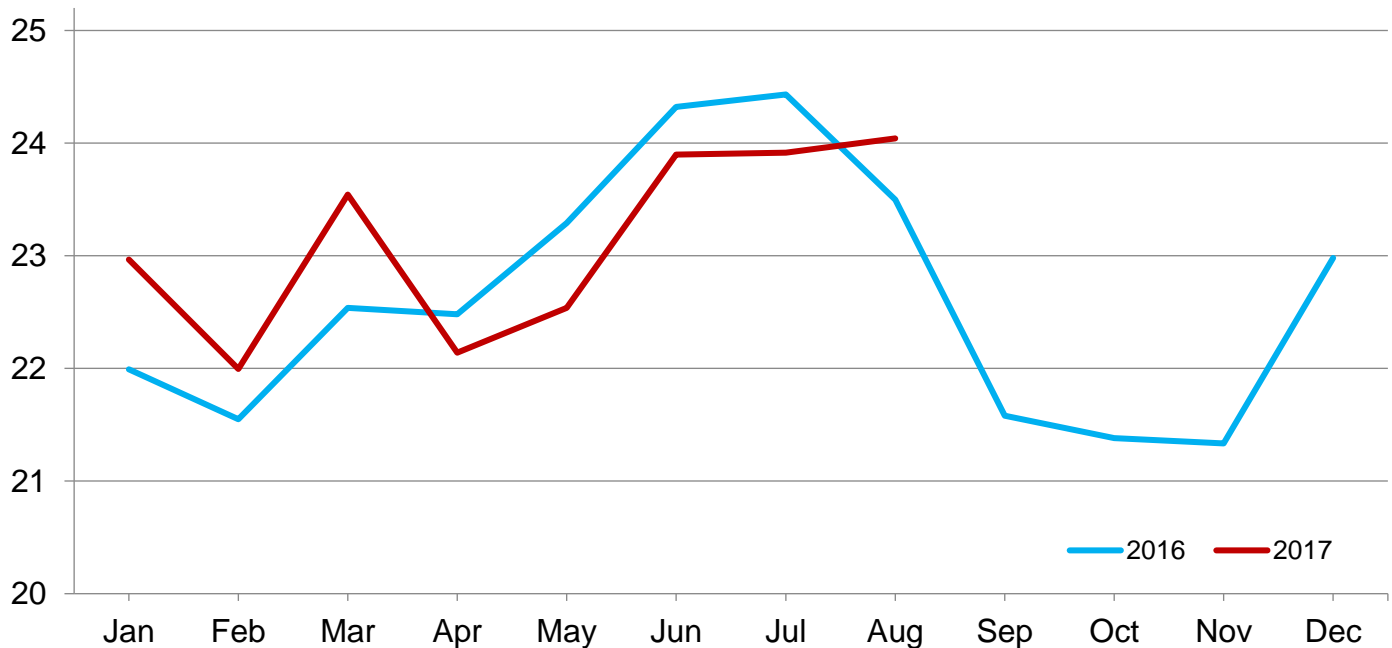
Turkey poults hatched during August 2017, in the United States totaled 24.8 million, up 2 percent from August 2016. Poults hatched were up 1 percent from the July 2017 total of 24.6 million poults.

## Net Poults Placed During August Up 2 Percent from Last Year

The 24.0 million net poults placed during August 2017 in the United States were up 2 percent from the number placed during the same month a year earlier. Net placements were up 1 percent from the July 2017 total of 23.9 million.

## Net Poult Placements – United States

Million poults



## Eggs in Incubators and Poults Hatched by Month – United States: 2015-2018

[Blank data cells indicate estimation period has not yet begun]

Month	Eggs in incubators first of month		Percent of previous year	Poults hatched entire month		Percent of previous year
	2016-2017	2017-2018		2015-2016	2016-2017	
	(1,000 eggs)	(1,000 eggs)	(percent)	(1,000 poults)	(1,000 poults)	(percent)
September .....	28,927	28,886	100	19,528	23,645	121
October .....	28,409			20,621	23,572	114
November .....	27,179			20,996	22,782	109
December .....	28,795			22,642	25,422	112
January .....	29,961			22,783	25,332	111
February .....	29,906			22,382	23,598	105
March .....	30,030			23,596	25,719	109
April .....	28,597			23,782	23,179	97
May .....	28,825			23,773	24,067	101
June .....	29,441			25,036	25,075	100
July .....	29,271			24,752	24,616	99
August .....	29,725			24,232	24,783	102

## Net Poultry Placements by Month – United States: 2015-2017

[Includes imports and excludes exports. Blank data cells indicate estimation period has not yet begun]

Month	Total all breeds		Percent of previous year	Cumulative total		Percent of previous year
	2015-2016	2016-2017		2015-2016	2016-2017	
	(1,000 poults)	(1,000 poults)	(percent)	(1,000 poults)	(1,000 poults)	(percent)
September .....	19,041	21,581	113	19,041	21,581	113
October .....	20,213	21,381	106	39,254	42,962	109
November .....	20,946	21,334	102	60,200	64,296	107
December .....	22,562	22,980	102	82,762	87,276	105
January .....	21,991	22,966	104	104,753	110,242	105
February .....	21,550	21,995	102	126,303	132,237	105
March .....	22,537	23,544	104	148,840	155,781	105
April .....	22,480	22,139	98	171,320	177,920	104
May .....	23,291	22,538	97	194,611	200,458	103
June .....	24,322	23,899	98	218,933	224,357	102
July .....	24,432	23,915	98	243,365	248,272	102
August .....	23,497	24,042	102	266,862	272,314	102

## Statistical Methodology

**Survey Procedures:** Data for turkey hatchery estimates are collected from all known turkey hatcheries. Individual NASS field offices maintain a list of all known turkey hatcheries and use known sources of hatcheries to update their lists. Approximately 40 hatcheries are contacted each month. All known turkey hatcheries hatching 15,000 or more poults annually are mailed a questionnaire as close to the first of the month as possible. Adequate time is given to respond via mail, fax, or electronic data reporting (EDR). Those that do not respond are contacted by phone. Care is exercised to ensure that all hatcheries are accounted for in the estimate.

**Estimating Procedures:** Sound statistical methodology is employed to derive the estimates from reported data. All data are analyzed for unusual values. Data from each operation are compared to their own past operating profile and to trends from similar operations. Data for missing operations were estimated based on similar operations or historical data. NASS field offices prepare these estimates by using a combination of survey indications and historic trends. Individual State estimates are reviewed by the Agricultural Statistics Board for reasonableness. Individual hatchery data are summed to State, regional, and United States totals. Only United States level estimates are published due to the limited number of hatcheries involved. The Net Poult Placement data include imported poults and exclude exported poults.

Cumulative net poult placements beginning on September 1 and ending on August 31 are shown in the monthly *Turkey Hatchery* report. This time period corresponds with the placements of poults which will reach maturity and be available for slaughter during the calendar year.

States reporting turkey hatcheries are: Arkansas, California, Florida, Idaho, Indiana, Iowa, Massachusetts, Michigan, Minnesota, Missouri, North Carolina, New Mexico, Ohio, Pennsylvania, Texas, Virginia, West Virginia, and Wisconsin.

**Revision Policy:** Revisions are generally the result of late or corrected data. Revisions to the previous month are published in the monthly *Turkey Hatchery* report, while annual revisions are published in the *Hatchery Production - Annual Summary* report in April.

**Reliability:** Turkey hatchery estimates are based on a census of all known operating hatcheries and therefore, have no sampling error. However, estimates are subject to errors such as omission, duplication, and mistakes in reporting, recording, and processing the data. While these errors cannot be measured directly, they are minimized through strict quality controls in the data collection process and through a careful review of all reported data for consistency and reasonableness.

To assist in evaluating the reliability of the estimates in this report, the “Root Mean Square Error” is shown for selected items in the following table. The “Root Mean Square Error” is a statistical measure based on past performance and is computed using the differences between first and final estimates. The “Root Mean Square Error” for turkey eggs in incubators on the first day of the month over the past 24 months is 1.9 percent. This means that chances are 2 out of 3 that the final estimate will not be above or below the current estimate of 28.9 million eggs by more than 1.9 percent. Chances are 9 out of 10 that the difference will not exceed 3.2 percent.

### Reliability of September Turkey Hatchery Estimates

[Based on data for the past 24 months]

Item	Root mean square error	90 percent confidence level	Difference between first and latest estimate				
			Average	Smallest	Largest	Months	
						Below latest	Above latest
	(percent)	(percent)	(1,000)	(1,000)	(1,000)	(number)	(number)
Eggs in incubators .....	1.9	3.2	382	29	1,359	18	6
Poults hatched .....	1.1	1.9	174	0	815	11	12
Net poult placements .....	1.9	3.2	373	41	745	7	17

## Information Contacts

Listed below are the commodity specialists in the Livestock Branch of the National Agricultural Statistics Service to contact for additional information. E-mail inquiries may be sent to [nass@nass.usda.gov](mailto:nass@nass.usda.gov)

Vacant, Chief, Livestock Branch .....	(202) 720-3570
Bruce Boess, Head, Poultry and Specialty Commodities Section .....	(202) 720-4447
Aaron Cosgrove – Egg Products, Poultry Slaughter, Turkey Hatchery, Turkeys Raised.....	(202) 690-3237
Alissa Cowell-Mytar – Cold Storage .....	(202) 720-4751
Brenda Hill – Catfish Production, Trout Production .....	(202) 720-6147
Tom Kruchten – Census of Aquaculture .....	(202) 690-4870
Kim Linonis – Layers, Eggs .....	(202) 690-8632
Joshua O’Rear – Cost of Pollination, Honey, Honey Bee Colonies.....	(202) 690-3676
Miste Salmon – Broiler Hatchery, Chicken Hatchery, Mink .....	(202) 720-3244

## Access to NASS Reports

For your convenience, you may access NASS reports and products the following ways:

- All reports are available electronically, at no cost, on the NASS web site: [www.nass.usda.gov](http://www.nass.usda.gov)
- Both national and state specific reports are available via a free e-mail subscription. To set-up this free subscription, visit [www.nass.usda.gov](http://www.nass.usda.gov) and click on “National” or “State” in upper right corner above “search” box to create an account and select the reports you would like to receive.

For more information on NASS surveys and reports, call the NASS Agricultural Statistics Hotline at (800) 727-9540, 7:30 a.m. to 4:00 p.m. ET, or e-mail: [nass@nass.usda.gov](mailto:nass@nass.usda.gov).

The U.S. Department of Agriculture (USDA) prohibits discrimination against its customers, employees, and applicants for employment on the basis of race, color, national origin, age, disability, sex, gender identity, religion, reprisal, and where applicable, political beliefs, marital status, familial or parental status, sexual orientation, or all or part of an individual's income is derived from any public assistance program, or protected genetic information in employment or in any program or activity conducted or funded by the Department. (Not all prohibited bases will apply to all programs and/or employment activities.)

If you wish to file a Civil Rights program complaint of discrimination, complete the [USDA Program Discrimination Complaint Form](#) (PDF), found online at [http://www.ascr.usda.gov/complaint\\_filing\\_cust.html](http://www.ascr.usda.gov/complaint_filing_cust.html), or at any USDA office, or call (866) 632-9992 to request the form. You may also write a letter containing all of the information requested in the form. Send your completed complaint form or letter to us by mail at U.S. Department of Agriculture, Director, Office of Adjudication, 1400 Independence Avenue, S.W., Washington, D.C. 20250-9410, by fax (202) 690-7442 or email at [program.intake@usda.gov](mailto:program.intake@usda.gov).