



ISSN: 1949-1964

Released December 14, 2018, by the National Agricultural Statistics Service (NASS), Agricultural Statistics Board, United States Department of Agriculture (USDA).

Eggs in Incubators on December 1 Up 2 Percent from Last Year

Turkey eggs in incubators on December 1, 2018, in the United States totaled 28.4 million, up 2 percent from December 1, 2017. Eggs in incubators were down 7 percent from the November 1, 2018 total of 30.4 million eggs.

Poults Hatched During November Up 8 Percent from Last Year

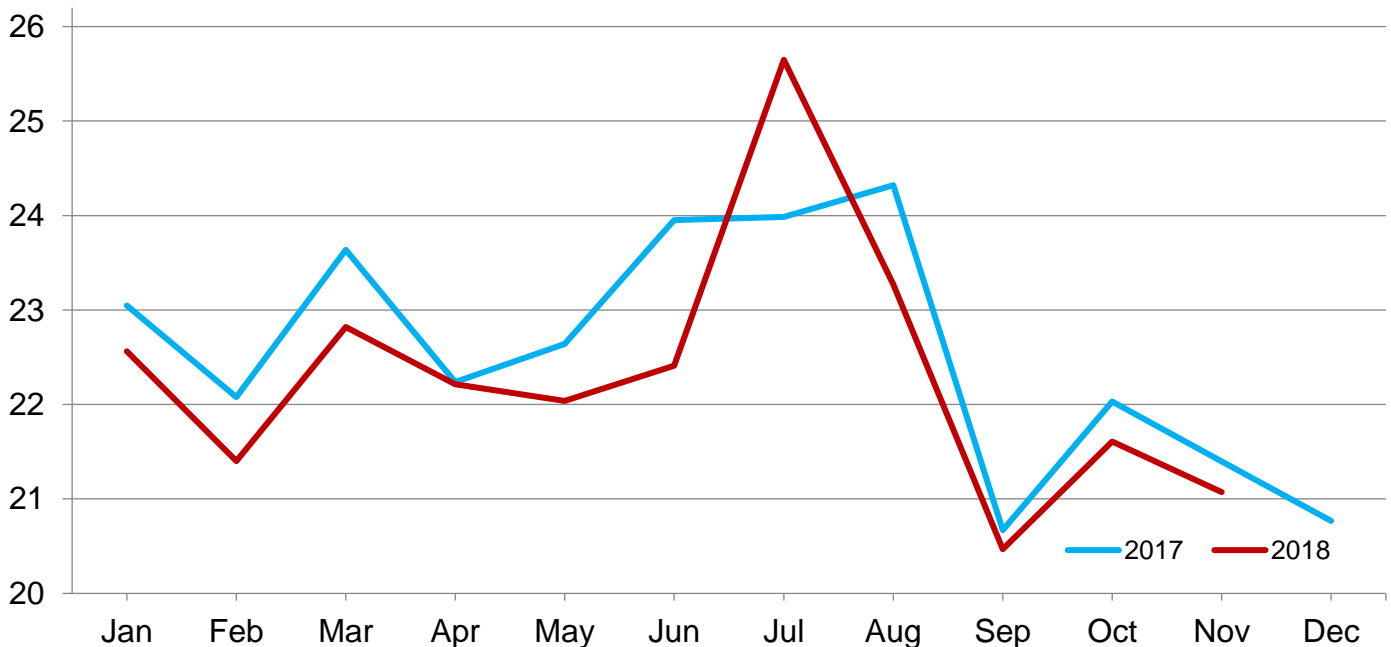
Turkey poults hatched during November 2018, in the United States totaled 25.1 million, up 8 percent from November 2017. Poults hatched were up 3 percent from the October 2018 total of 24.3 million poults.

Net Poults Placed During November Down 2 Percent from Last Year

The 21.1 million net poults placed during November 2018 in the United States were down 2 percent from the number placed during the same month a year earlier. Net poult placements were down 2 percent from the October 2018 total of 21.6 million.

Net Poult Placements – United States

Million poults



Eggs in Incubators and Poults Hatched by Month – United States: 2017-2019

[Blank data cells indicate estimation period has not yet begun.]

Month	Eggs in incubators first of month		Percent of previous year	Poults hatched entire month		Percent of previous year
	2017-2018	2018-2019		2017-2018	2018-2019	
	(1,000 eggs)	(1,000 eggs)	(percent)	(1,000 poults)	(1,000 poults)	(percent)
September	28,974	27,394	95	23,530	22,443	95
October	28,072	28,750	102	24,393	24,295	100
November	28,605	30,418	106	23,246	25,063	108
December	27,806	28,438	102	22,375		
January	28,920			24,293		
February	28,396			22,647		
March	28,463			24,186		
April	28,232			23,482		
May	28,815			23,503		
June	28,567			23,337		
July	28,561			25,727		
August	29,090			23,990		

Net Poultry Placements by Month – United States: 2017-2019

[Includes imports and excludes exports.]

[Blank data cells indicate estimation period has not yet begun.]

Month	Total all breeds		Percent of previous year	Cumulative total		Percent of previous year
	2017-2018	2018-2019		2017-2018	2018-2019	
	(1,000 poults)	(1,000 poults)	(percent)	(1,000 poults)	(1,000 poults)	(percent)
September	20,670	20,468	99	20,670	20,468	99
October	22,030	21,606	98	42,700	42,074	99
November	21,399	21,071	98	64,099	63,145	99
December	20,766			84,865		
January	22,564			107,429		
February	21,401			128,830		
March	22,820			151,650		
April	22,214			173,864		
May	22,036			195,900		
June	22,411			218,311		
July	25,648			243,959		
August	23,271			267,230		

Statistical Methodology

Survey Procedures: Data for turkey hatchery estimates are collected from all known turkey hatcheries. Individual NASS regional field offices maintain a list of all known turkey hatcheries and use known sources of hatcheries to update their lists. Approximately 40 hatcheries are contacted each month. All known turkey hatcheries hatching 15,000 or more poult annually are mailed a questionnaire as close to the first of the month as possible. Adequate time is given to respond via mail, fax, or electronic data reporting. Those that do not respond are contacted by phone. Care is exercised to ensure that all hatcheries are accounted for in the estimate.

Estimating Procedures: Sound statistical methodology is employed to derive the estimates from reported data. All data are analyzed for unusual values. Data from each operation are compared to their own past operating profile and to trends from similar operations. Data for missing operations were estimated based on similar operations or historical data. NASS regional field offices prepare these estimates by using a combination of survey indications and historic trends. Individual State estimates are reviewed by the Agricultural Statistics Board for reasonableness. Individual hatchery data are summed to State, regional, and United States totals. Only United States level estimates are published due to the limited number of hatcheries involved. The Net Poult Placement data include imported poult and exclude exported poult.

Cumulative net poult placements beginning on September 1 and ending on August 31 are shown in the monthly *Turkey Hatchery* report. This time period corresponds with the placements of poult which will reach maturity and be available for slaughter during the calendar year.

States reporting turkey hatcheries are: Arkansas, California, Florida, Idaho, Indiana, Iowa, Massachusetts, Michigan, Minnesota, Missouri, Nebraska, North Carolina, New Mexico, Ohio, Pennsylvania, Virginia, West Virginia, and Wisconsin.

Revision Policy: Revisions are generally the result of late or corrected data. Revisions to the previous month are published in the monthly *Turkey Hatchery* report, while annual revisions are published in the *Hatchery Production - Annual Summary* report in April.

Reliability: Turkey hatchery estimates are based on a census of all known operating hatcheries and therefore, have no sampling error. However, estimates are subject to errors such as omission, duplication, and mistakes in reporting, recording, and processing the data. While these errors cannot be measured directly, they are minimized through strict quality controls in the data collection process and through a careful review of all reported data for consistency and reasonableness.

To assist in evaluating the reliability of the estimates in this report, the “Root Mean Square Error” is shown for selected items in the following table. The “Root Mean Square Error” is a statistical measure based on past performance and is computed using the differences between first and final estimates. The “Root Mean Square Error” for turkey eggs in incubators on the first day of the month over the past 24 months is 1.5 percent. This means that chances are 2 out of 3 that the final estimate will not be above or below the current estimate of 28.4 million eggs by more than 1.5 percent. Chances are 9 out of 10 that the difference will not exceed 2.6 percent.

Reliability of December Turkey Hatchery Estimates

[Based on data for the past 24 months]

Item	Root mean square error	90 percent confidence level	Difference between first and latest estimate				
			Average	Smallest	Largest	Months	
						Below latest	Above latest
	(percent)	(percent)	(1,000)	(1,000)	(1,000)	(number)	(number)
Eggs in incubators	1.5	2.6	316	4	1,359	20	4
Poult hatched	0.8	1.3	139	2	577	16	8
Net poult placements	1.6	2.8	302	22	810	7	17

Information Contacts

Listed below are the commodity specialists in the Livestock Branch of the National Agricultural Statistics Service to contact for additional information. E-mail inquiries may be sent to nass@nass.usda.gov

Travis Averill, Chief, Livestock Branch	(202) 720-3570
Tony Dorn, Head, Poultry and Specialty Commodities Section	(202) 690-3223
Holly Brenize – Poultry Slaughter.....	(202) 720-0585
Alissa Cowell-Mytar – Cold Storage, Capacity of Refrigerated Warehouses	(202) 720-4751
Liana Cuffman – Catfish and Trout, Egg Products, Mink, Census of Aquaculture	(202) 720-8784
Fatema Haque – Broiler Hatchery, Chicken Hatchery	(202) 720-3244
Kim Linonis – Layers, Eggs	(202) 690-3676
Adam Peters – Turkey Hatchery, Turkeys Raised	(202) 690-3237
Erica Sadler – Cost of Pollination, Honey, Honey Bee Colonies	(202) 720-6147

Access to NASS Reports

For your convenience, you may access NASS reports and products the following ways:

- All reports are available electronically, at no cost, on the NASS web site: www.nass.usda.gov
- Both national and state specific reports are available via a free e-mail subscription. To set-up this free subscription, visit www.nass.usda.gov and click on “National” or “State” in upper right corner above “search” box to create an account and select the reports you would like to receive.
- Cornell’s Mann Library has launched a new website housing NASS’s and other agency’s archived reports. The new website, <https://usda.library.cornell.edu>. All email subscriptions containing reports will be sent from the new website, <https://usda.library.cornell.edu>. To continue receiving the reports via e-mail, you will have to go to the new website, create a new account and re-subscribe to the reports. If you need instructions to set up an account or subscribe, they are located at: <https://usda.library.cornell.edu/help>. You should whitelist notifications@usda-esmis.library.cornell.edu in your email client to avoid the emails going into spam/junk folders.

For more information on NASS surveys and reports, call the NASS Agricultural Statistics Hotline at (800) 727-9540, 7:30 a.m. to 4:00 p.m. ET, or e-mail: nass@nass.usda.gov.

The U.S. Department of Agriculture (USDA) prohibits discrimination against its customers, employees, and applicants for employment on the basis of race, color, national origin, age, disability, sex, gender identity, religion, reprisal, and where applicable, political beliefs, marital status, familial or parental status, sexual orientation, or all or part of an individual's income is derived from any public assistance program, or protected genetic information in employment or in any program or activity conducted or funded by the Department. (Not all prohibited bases will apply to all programs and/or employment activities.)

If you wish to file a Civil Rights program complaint of discrimination, complete the [USDA Program Discrimination Complaint Form](#) (PDF), found online at www.ascr.usda.gov/filing-program-discrimination-complaint-usda-customer, or at any USDA office, or call (866) 632-9992 to request the form. You may also write a letter containing all of the information requested in the form. Send your completed complaint form or letter to us by mail at U.S. Department of Agriculture, Director, Office of Adjudication, 1400 Independence Avenue, S.W., Washington, D.C. 20250-9410, by fax (202) 690-7442 or email at program.intake@usda.gov.