



**United States Department of Agriculture
National Agricultural Statistics Service
Alabama Crop Progress
and Condition Report**



Cooperating with the Alabama Department of Agriculture and Industries
Southern Region, Alabama Field Office · 4121 Carmichael Road · Montgomery, AL 36106 · (334) 279-3555 · (855) 271-9801 FAX
www.nass.usda.gov

This report contains data collected each week from respondents across the state whose occupations provide them opportunities to discuss agricultural production with farmers in their counties as well as to make visual observations. We thank all who have contributed to this report.

May 28, 2024

Media Contact: Charmaine Wilson

General

According to the National Agricultural Statistics Service in Alabama, there were 5.3 days suitable for fieldwork for the week ending Sunday, May 26, 2024. Precipitation ranged from no rain to 2.1 inches of rain. Average high temperatures ranged from the low 80s to the low 90s. Average low temperatures ranged from the low 60s to the low 70s.

Crops

Most of the state received light rain throughout the week, with the counties bordering Florida and along the coast receiving little to no rain. In Montgomery County, there was some minor wind damage reported to trees and buildings. Corn was progressing as expected throughout the week. Cotton and peanut planting continued at a fast pace as the weather allowed. In Henry County, some cotton and peanuts were beginning to emerge. The rain prevented many from continuing a first hay cutting and some spring planting. Soybean planting continued throughout the week. Winter wheat headed was nearing completion while winter wheat harvest has started in some areas. In Jefferson and Walker County, strawberry harvest was coming to an end.

Livestock and Pastures

Pastures were reported to be in mostly good to fair condition and have improved with the warmer temperatures and rainfall. Cattle were also reported in mostly good to fair condition.

Crop Progress for Week Ending 05/26/24

Crop stage	Prev year (percent)	Prev week (percent)	This week (percent)	5 Year avg (percent)
Corn - Planted	NA	96	99	NA
Corn - Emerged.....	94	85	91	97
Corn - Silking.....	1	NA	3	1
Cotton - Planted	76	54	75	81
Cotton - Squaring.....	1	NA	0	0
Hay - 1st Cutting	64	56	63	79
Peanuts - Planted.....	58	47	61	72
Soybeans - Planted.....	59	50	62	54
Soybeans - Emerged.....	29	22	41	32
Winter wheat - Headed.....	NA	93	97	NA
Winter wheat - Harvested...	12	6	13	17

(NA) Not available.

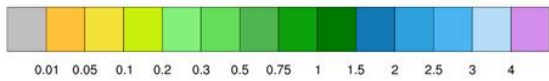
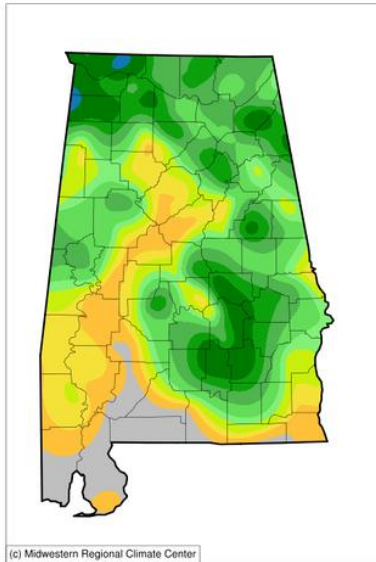
Conditions for Week Ending 05/26/24

Crop	Very poor (percent)	Poor (percent)	Fair (percent)	Good (percent)	Excellent (percent)
Cattle.....	1	2	12	76	9
Corn	0	0	8	82	10
Cotton	0	1	21	76	2
Pasture and range	1	2	17	70	10
Peanuts.....	0	0	19	78	3
Winter wheat	0	0	21	59	20

Soil Moisture for Week Ending 05/26/24

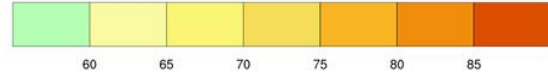
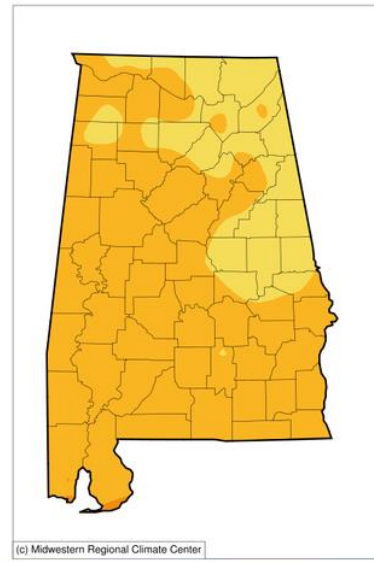
Topsoil	Previous week (percent)	This week (percent)
Very short	1	1
Short	5	5
Adequate	63	70
Surplus.....	31	24
Subsoil	Previous week (percent)	This week (percent)
Very short	0	1
Short	9	6
Adequate	72	89
Surplus.....	19	4

Accumulated Precipitation (in)
May 20, 2024 to May 26, 2024



<http://mrcc.perdue.edu/CLIMATE/>

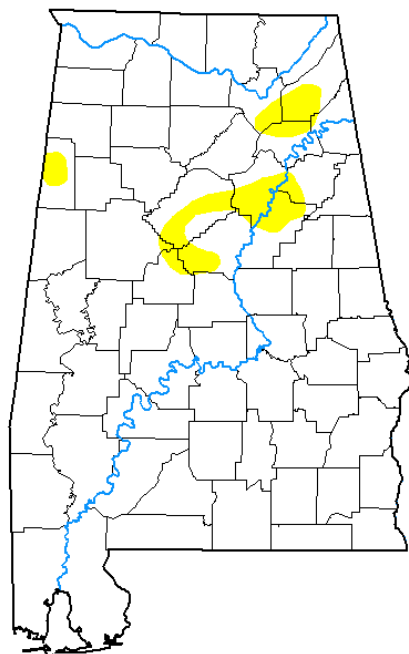
Average Temperature (°F)
May 20, 2024 to May 26, 2024



<http://mrcc.perdue.edu/CLIMATE/>

U.S. Drought Monitor
Alabama

May 21, 2024
(Released Thursday, May. 23, 2024)
Valid 8 a.m. EDT



Intensity:

- None
- D0 Abnormally Dry
- D1 Moderate Drought
- D2 Severe Drought
- D3 Extreme Drought
- D4 Exceptional Drought

The Drought Monitor focuses on broad-scale conditions. Local conditions may vary. For more information on the Drought Monitor, go to <https://droughtmonitor.unl.edu/About.aspx>

Author:

David Simeral
Western Regional Climate Center



droughtmonitor.unl.edu