



California Crop Weather

Cooperating with the California Department of Food and Agriculture

Pacific Region • P.O. Box 1258 • Sacramento, CA 95812 • (916) 738-6600 • (855) 270-2722 FAX • www.nass.usda.gov/ca

WEEK ENDING: July 4, 2021
RELEASED: July 6, 2021

FREQUENCY: Weekly
VOL. 42 NO. 14

WEATHER

Temperature lows for California ranged from low 50s to high 60s along the coast, low 50s to low 70s in the mountains, mid 50s to high 80s in the desert, and high 50s to low 80s in the valley. Temperature highs for the state ranged from low 60s to mid 100s along the coast, high 70s to mid 100s in the mountains, low 90s to high 100s in the valley, and mid 90s to mid 110s in the desert.

FIELD CROPS

With high temperatures across the state, irrigation was a priority for row crops. In Tulare County, growers continued harvesting small grains like **wheat** and **barley**. **Sorghum** planting continued. **Corn** was chopped for silage. **Oat** and **alfalfa** fields were being cut, dried, and baled for hay. Some fields were prepared for **sunflower** planting in the Sacramento Valley. Across the San Joaquin Valley, **cotton** was blooming. **Beans** were growing in Stanislaus County. Alfalfa continued to be harvested in Fresno County. In the Imperial Valley, elevated humidity continued to hurt hay quality.

FRUIT CROPS

Stone fruit orchards continued to be irrigated. **Peach**, **nectarine**, **apricot**, and **plum** harvests were well underway. **Pomegranates** and **apples** were progressing nicely. **Kiwifruit** and **grapes** were sizing well as fruit matured. **Pummelo**, **tangelo**, **lemon**, **lime**, and **grapefruit** harvests continued. Some citrus trees were topped and hedged. **Olive** and **persimmon** maturation continued.

NUT CROPS

Orchard floors were cleared in preparation for harvest. **Almond** orchards underwent late pesticide applications to prevent worm infestation as hulls began to split. **Walnut** and **pistachio** orchards progressed. Insecticide applications were completed as needed.

VEGETABLE CROPS

In Stanislaus County, **garlic** fields were being prepared for harvest. **Tomatoes** progressed well and growers were preparing to harvest the earliest fields. In Tulare County, spring **lettuce**, **onions**, **eggplants**, **zucchini**, and **herbs** were harvested. Producers started to offer early summer vegetables such as **squash**, **cucumbers**, and **peppers** for sale at local markets. Sweet **corn** was offered at local stands.

LIVESTOCK

Rangeland and non-irrigated pasture were in poor to very poor condition. Irrigated range remained in good to excellent condition. Bees were active in melon, squash, and sunflower fields. Sheep grazed on old alfalfa fields and retired farmland. Water continued to be trucked in to fill drying foothill stock ponds. Cattle supplemental feeding began to compensate for the poor nutritional quality of dry pasture.

CALIFORNIA CROP WEATHER – WEEK ENDING JULY 4, 2021

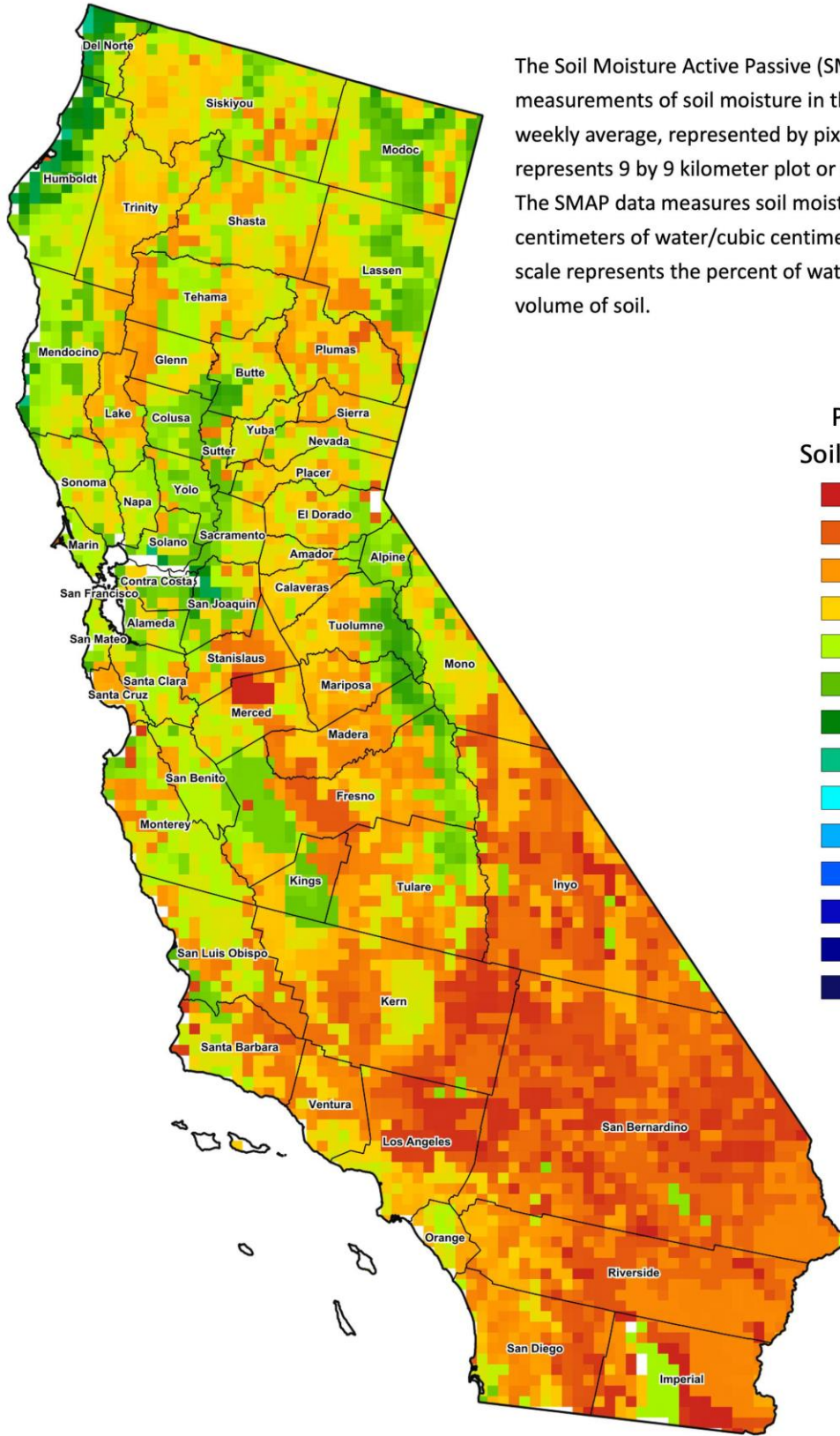
STATIONS	TEMPERATURE				GROWING DEGREE HOURS AT 60°F BASE		RAIN DAYS	PRECIPITATION ¹			
	Average for Week Ending Jul 4, 2021	Departure from Normal ²	High	Low	This Year	Normal Year ²	This Season	This Week	This Season	Normal Season ²	Normal Year ²
					Jan 1- Jul 4, 2021	Jan 1- Jul 4, 2021	Oct 1- Jul 4, 2021	Week Ending Jul 4, 2021	Oct 1- Jul 4, 2021	Oct 1- Jul 4	Oct 1- Sept 30
-- Degrees Fahrenheit --				-- Number --		-- Days ³ --	-- Inches of Precipitation --				
North Coast											
Eureka WFO	60	3	67	54	17	0	97	0.00	24.31	39.28	40.53
Ukiah	79	7	100	56	729	372	51	0.00	13.47	36.78	37.61
Santa Rosa	67	-1	89	51	372	251	44	0.00	12.87	35.84	36.51
Napa State Hospital	65	-1	80	52	305	176	41	0.00	7.48	20.04	20.52
Central Coast											
San Francisco	67	4	76	59	295	107	40	0.00	7.84	20.44	20.79
San Jose	68	-2	79	58	427	461	33	0.00	5.33	14.67	15.02
Salinas	64	1	71	57	199	82	37	0.02	5.79	12.63	12.91
Monterey	63	3	71	57	156	10	39	0.01	7.57	15.87	16.23
Paso Robles	76	4	105	54	695	450	22	0.00	6.74	12.45	12.87
Sacramento Valley											
Redding	88	8	108	70	1337	827	51	0.00	13.81	33.72	34.80
Red Bluff	86	6	105	69	1345	848	46	0.00	9.23	23.77	24.63
Willows	N/A	N/A	N/A	N/A	N/A	N/A	N/A	N/A	N/A	N/A	N/A
Oroville	86	8	103	67	1263	809	38	0.00	8.77	30.71	31.72
Marysville	80	3	100	59	1066	729	36	0.00	7.14	22.15	22.88
Sacramento	77	2	98	58	1002	658	33	0.00	6.68	20.80	21.35
San Joaquin Valley											
Stockton	76	1	97	59	790	683	28	0.00	7.89	13.76	14.14
Modesto	78	0	97	61	942	898	25	0.00	7.13	12.83	13.19
Merced Macready	82	5	101	64	1034	744	29	0.00	7.01	12.19	12.59
Madera	82	4	103	62	1034	788	19	0.00	1.78	11.73	12.10
Fresno	87	6	104	71	1451	1025	26	0.00	6.59	11.31	11.57
Lemoore	85	8	107	64	1155	806	22	0.00	4.30	7.71	7.95
Visalia	85	6	101	69	1297	893	26	0.00	5.15	10.76	10.99
Bakersfield	90	8	105	74	1559	1063	20	0.00	2.78	6.35	6.51
Cascade Sierra											
Alturas	77	13	105	52	319	46	60	0.00	5.84	13.00	14.22
Mount Shasta	76	11	101	55	438	90	68	0.00	18.52	41.88	43.48
Blue Canyon	76	9	88	66	426	102	65	0.00	30.95	63.24	65.00
Yosemite Valley	N/A	N/A	N/A	N/A	N/A	N/A	N/A	N/A	N/A	N/A	N/A
South Coast											
Santa Maria	64	2	77	54	161	43	25	0.00	6.89	13.76	14.05
Santa Barbara	67	3	74	60	252	126	17	0.00	7.32	17.36	17.89
Oxnard	67	2	74	59	293	144	13	0.00	2.82	14.35	14.71
Riverside	79	3	99	62	1084	813	14	0.00	4.38	12.00	12.50
Los Angeles	67	-1	74	60	446	331	13	0.00	5.00	12.53	12.92
San Diego	70	2	75	66	683	449	30	0.00	4.52	10.14	10.42
Southeast Interior											
Bishop	80	4	107	56	848	544	6	0.00	1.63	4.71	5.21
Daggett	93	6	111	73	1881	1422	10	0.00	0.63	3.15	4.08
Lancaster	86	6	109	66	1303	877	12	0.00	1.33	7.05	7.43
Thermal	93	4	116	73	2405	1944	7	0.00	0.35	2.63	3.22
Blythe	97	4	115	83	2502	2166	5	0.00	0.94	2.63	3.85
Imperial	93	3	112	76	2267	2004	1	0.00	0.69	2.53	3.46

¹ Rain or melted snow/ice.

² Normal periods 1980-2010 used in departure from normal calculations.

³ Total number of days with precipitation events this season.

Data retrieved from NOAA and NWS. Calculated by USDA NASS.
All rights reserved.



The Soil Moisture Active Passive (SMAP) provides measurements of soil moisture in the root zone as a weekly average, represented by pixels. Each pixel represents 9 by 9 kilometer plot or about 20,000 acres. The SMAP data measures soil moisture in cubic centimeters of water/cubic centimeters of soil. The scale represents the percent of water in a given volume of soil.

Percent Soil Moisture

- 0%
- 5%
- 10%
- 15%
- 20%
- 25%
- 30%
- 35%
- 40%
- 45%
- 50%
- 55%
- 60%
- >65%