



California Crop Progress & Condition

Cooperating with the California Department of Food and Agriculture
Pacific Region • P.O. Box 1258 • Sacramento, CA 95812 • (916) 738-6600 • (855) 270-2722 FAX • www.nass.usda.gov/ca

WEEK ENDING: June 19, 2022
RELEASED: June 21, 2022

FREQUENCY: Weekly
VOL. 43 NO. 12

WEATHER

Average lows for California ranged from 29 to 56 in the mountains, 44 to 64 along the coast, 48 to 67 in the Central Valley, and 49 to 80 in the desert. Average highs for the state ranged from 53 to 85 in the mountains, 60 to 101 along the coast, 73 to 99 in the Central Valley, and 79 to 111 in the desert.

FIELD CROPS

In the Sacramento Valley, normal practices in irrigation, cultivation and fertilization were ongoing. Small grain fields were harvested. **Corn** development was making good progress. In Stanislaus County, weeds were being sprayed in corn, **sorghum**, and **sudan grass**. Corn was sprayed for armyworm, two-spotted mites, and spider mites. **Alfalfa** and silage were being harvested. **Sunflower** was progressing well in Sutter County. In Tulare County, farmers were spreading fertilizer and tilling their fields to prepare for summer plantings. Growers irrigated to keep soil conditions moist and support row crop growth during dry, hot weather. Corn fields were bearing more leaves and in an early vegetative stage. **Cotton** fields were showing good growth.

FRUIT CROPS

Early varieties of **peaches**, **plums**, **nectarines**, and **apricots** were harvested. Irrigation and weed control efforts continued. Reflective sheeting was placed to improve stone fruit coloring. **Cherry** harvest was wrapped up for the season. **Grape** size continued to increase, and vines were trimmed and tied where necessary. **Persimmon** trees, **pomegranate**, and **kiwifruit** development continued. Various citrus groves continued to be hedge rowed. Gold Nugget **mandarins**, Valencia **oranges**, **tangelos**, **grapefruit**, and **lemon** harvests progressed. **Olive** orchards were cleaned and pruned. **Blueberry** harvest continued.

NUT CROPS

Extreme temperatures have caused damage to nut orchards. Weed control continued where necessary. Insecticide was sprayed where mites were found. **Almond** hull split began in certain areas of the state. Navel orangeworm eggs were found when inspecting hull split in various counties. **Walnuts** were heavily affected by strong winds. **Pistachios** were changing color.

VEGETABLE CROPS

Growers prepared for the upcoming cherry **tomato** harvest in the Capay Valley. In Stanislaus County, sweet **potato** transplants winded down. In Tulare County, summer vegetable crop plantings continued, and have developed well with the warmer weather. **Squash** was harvested, while **peppers** continued to develop. Melon fields were weeded in preparation for harvest.

LIVESTOCK

Rangeland and non-irrigated pasture were in poor to fair condition. Non-irrigated pasture in the Central Valley continued to dry rapidly. Irrigated range was in good to excellent condition. Bees were active in melon, safflower, and sunflower fields. Sheep grazed on fallow fields and retired farmland. Some cattle received supplemental hay.

NOTICE: USDA NASS has changed the base temperature used to calculate growing degree days (found in the table below) from 60 °F to 50 °F.

CALIFORNIA CROP WEATHER – WEEK ENDING JUNE 19, 2022											
STATIONS	TEMPERATURE				GROWING DEGREE DAYS AT 50 °F BASE ¹		RAIN DAYS ²	PRECIPITATION ³			
	Average for Week Ending Jun 19, 2022	Departure from Normal ⁴	High	Low	This Year	Normal Year ⁴	This Season	This Week	This Season	Normal Season ⁴	Normal Year ⁴
					Jan 1 - Jun 19, 2022	Jan 1 - June 19, 2022	Oct 1 - Jun 19, 2022	Week Ending Jun 19, 2022	Oct 1 - Jun 19, 2022	Oct 1 - Jun 19	Oct 1 - Sept 30
-- Degrees Fahrenheit --				-- Number --		-- Days --	-- Inches of Precipitation --				
North Coast											
Eureka WFO	56	0	64	47	353	286	109	0.05	25.54	39.21	40.61
Ukiah	63	-6	88	46	1,177	1,064	64	0.00	19.55	34.53	35.07
Santa Rosa	65	-1	89	47	1,206	986	60	0.00	26.19	33.50	34.00
Napa State Hospital	65	0	85	45	1,042	943	48	0.00	18.00	20.09	20.36
Central Coast											
San Francisco	63	0	77	53	1,268	1,143	44	0.00	18.18	19.50	19.77
San Jose	67	0	86	53	1,572	1,365	33	0.00	7.31	13.32	13.58
Salinas	63	1	78	50	1,483	1,088	30	0.00	7.31	12.48	12.66
Monterey	60	0	69	49	1,222	979	40	0.00	10.65	16.11	16.36
Paso Robles	69	0	101	44	1,519	1,153	24	0.00	8.72	11.99	12.24
Sacramento Valley											
Redding	73	-4	96	58	1,882	1,548	60	0.03	18.86	32.71	33.70
Red Bluff	72	-5	96	56	1,901	1,557	47	0.17	12.66	22.73	23.25
Orland	74	-1	95	55	2,010	1,514	43	0.00	11.54	20.97	21.52
Oroville	74	-2	99	56	1,971	1,608	49	0.00	17.31	25.37	25.84
Marysville	72	-2	98	51	1,740	1,488	42	0.00	8.49	19.85	20.21
Sacramento	73	0	98	52	1,675	1,391	43	0.00	14.03	17.76	18.10
San Joaquin Valley											
Stockton	72	-2	99	50	1,773	1,631	36	0.00	9.81	13.35	13.53
Modesto	71	-4	96	54	1,748	1,656	33	0.00	9.00	12.18	12.34
Merced Macready	72	-2	98	53	1,768	1,516	28	0.00	7.45	11.74	11.87
Madera	70	-5	99	49	1,640	1,634	22	0.00	2.55	10.74	10.86
Fresno	74	-4	98	57	2,197	1,848	24	0.00	6.30	10.89	11.05
Lemoore	73	-2	98	48	1,862	1,642	20	0.00	4.03	7.14	7.23
Visalia	75	0	99	54	1,990	1,626	26	0.00	7.23	10.23	10.37
Bakersfield	73	-6	95	57	2,182	2,016	20	0.00	5.41	6.30	6.40
Cascade Sierra											
Alturas	52	-8	84	29	225	267	62	0.00	7.44	10.63	11.72
Mount Shasta	58	-4	85	36	443	371	76	0.00	18.70	36.35	37.86
Blue Canyon	56	-6	74	43	514	317	65	0.00	65.16	61.48	62.80
Yosemite Valley	53	-13	73	37	441	558	46	0.00	26.74	39.28	40.65
South Coast											
Santa Maria	61	0	83	46	1,120	1,129	25	0.00	7.81	13.20	13.42
Santa Barbara	68	6	87	53	1,451	1,230	26	0.00	10.54	17.14	17.38
Oxnard	64	0	73	54	1,551	1,527	24	0.00	11.62	12.81	13.05
Riverside	74	1	96	57	2,469	2,066	22	0.00	4.83	9.13	9.48
Los Angeles	68	2	76	62	2,150	1,866	27	0.01	10.19	12.07	12.33
San Diego	65	-2	72	57	1,821	2,081	28	0.00	6.10	9.57	9.87
Southeast Interior											
Bishop	70	-3	100	49	1,208	1,032	12	0.00	4.76	4.44	4.87
Daggett	82	-2	107	63	2,572	2,250	9	0.00	1.09	3.10	3.80
Lancaster	74	-3	99	54	1,728	1,447	15	0.00	3.59	6.53	6.86
Thermal	88	2	108	64	3,258	3,126	6	0.00	0.19	2.38	2.98
Blythe	89	0	111	68	3,561	3,321	5	0.00	0.28	2.57	3.58
Imperial	86	-1	108	61	3,340	3,180	2	0.00	0.06	1.94	2.39

¹ Previously labeled as growing degree hours. The column title was corrected in the Sept 27, 2021 report. Additionally, degree days were previously calculated using a base of 60 degrees. The base temperature was changed to 50 degrees in the April 4, 2022 report.

² Total number of days with precipitation events this season.

³ Rain or melted snow/ice.

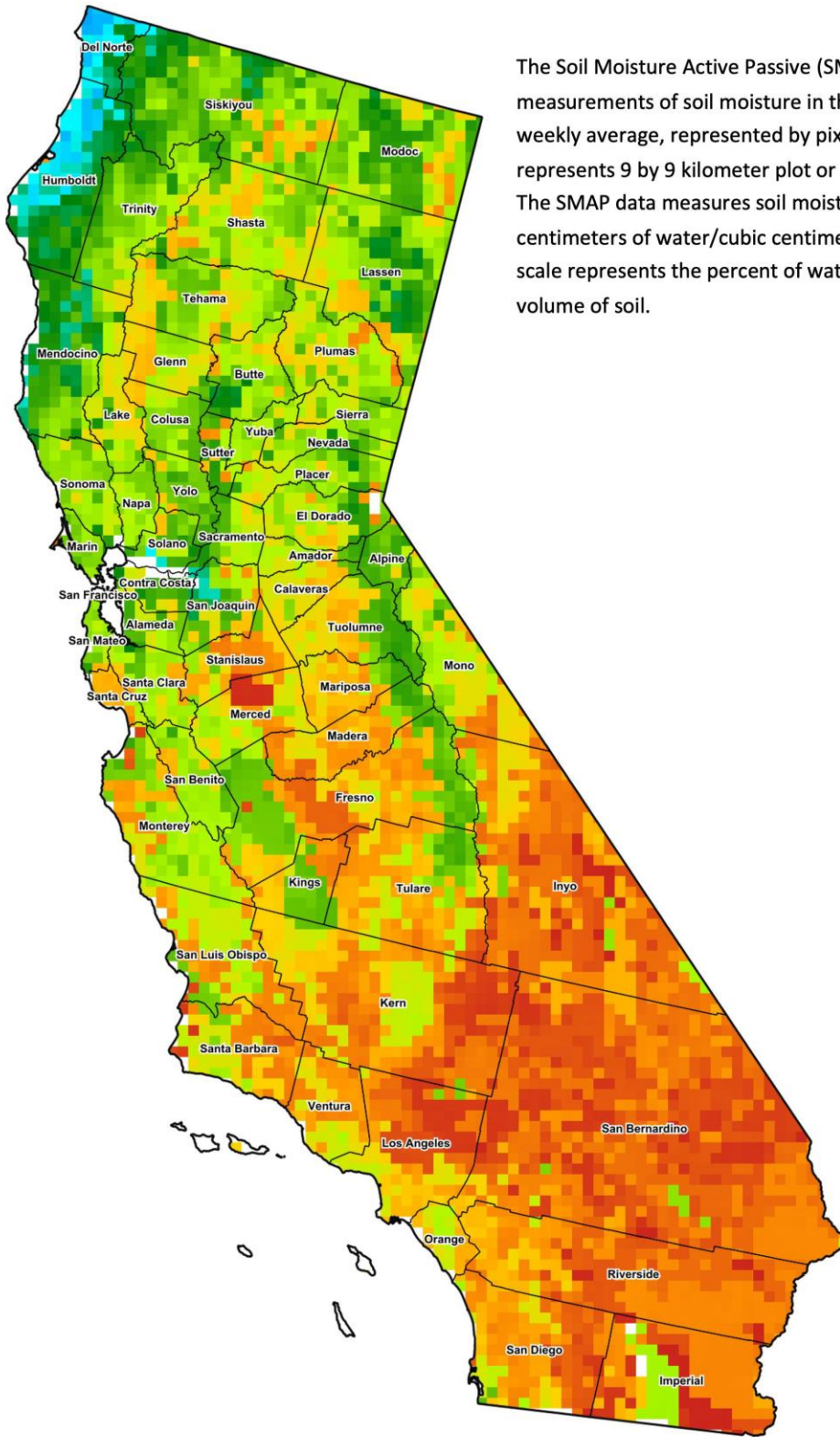
⁴ Normal periods 1990-2020 used in departure from normal calculations.

Data retrieved from NOAA and NWS. Calculated by USDA NASS.
All rights reserved.

Reservoir Data from the California Department of Water Resources

Reservoir	Capacity	June 19, 2022			This Date Last Year	
		Storage	Percent of Capacity	Percent of Average	Storage	Percent of Capacity
		<i>Acre Feet</i>	<i>Percent</i>	<i>Percent</i>	<i>Acre Feet</i>	<i>Percent</i>
Shasta Lake	4,547,300	1,799,568	40	49	1,839,056	40
Lake Oroville	3,537,400	1,817,372	51	66	1,228,343	35
Trinity Lake	2,443,800	727,165	30	38	1,200,691	49
New Melones Reservoir	2,413,000	811,080	34	54	1,276,132	53
San Luis Reservoir	2,057,200	837,026	41	69	753,117	37
Don Pedro Reservoir	4,547,300	1,339,382	66	81	1,284,560	63

Source: cdec.water.ca.gov/reportapp/javareports?name=DLYHYDRO



The Soil Moisture Active Passive (SMAP) provides measurements of soil moisture in the root zone as a weekly average, represented by pixels. Each pixel represents 9 by 9 kilometer plot or about 20,000 acres. The SMAP data measures soil moisture in cubic centimeters of water/cubic centimeters of soil. The scale represents the percent of water in a given volume of soil.



Drought Conditions from the U.S. Drought Monitor

Time	Percent of Land in Drought Rating						Drought Severity (DSCI)
	None	D0	D1	D2	D3	D4	
Current	0.00	0.21	2.31	37.67	48.22	11.59	369
Last Week	0.00	0.21	2.31	37.67	48.22	11.59	369
3 Months Ago	0.00	0.00	6.77	58.01	35.22	0.00	328
One Year Ago	0.00	0.00	5.25	9.31	52.12	33.32	414

The U.S. Drought Monitor is jointly produced by the National Drought Mitigation Center at the University of Nebraska-Lincoln, the United States Department of Agriculture, and the National Oceanic and Atmospheric Administration. droughtmonitor.unl.edu/CurrentMap/StateDroughtMonitor.aspx?CA