



# California Crop Progress & Condition

Cooperating with the California Department of Food and Agriculture  
Pacific Region • P.O. Box 1258 • Sacramento, CA 95812 • (916) 738-6600 • (855) 270-2722 FAX • [www.nass.usda.gov/ca](http://www.nass.usda.gov/ca)

**WEEK ENDING: July 3, 2022**  
**RELEASED: July 5, 2022**

**FREQUENCY: Weekly**  
**VOL. 43 NO. 14**

## WEATHER

Average lows for California ranged from 36 to 66 in the mountains, 47 to 70 along the coast, 50 to 89 in the desert, and 54 to 76 in the Central Valley. Average highs for the state ranged from 59 to 109 along the coast, 62 to 96 in the mountains, 78 to 108 in the Central Valley, and 86 to 113 in the desert.

## FIELD CROPS

**Sunflower** fields were flowering in Sutter County. In the Sacramento Valley, irrigation continued to be a priority for many crops. **Corn** fields continued to make good progress. In Stanislaus County, weeds continued to be sprayed in corn, forage **hay**, and **Sudan grass**. Corn was sprayed for both two-spotted mites and spider mites. **Alfalfa** hay and silage continued to be harvested. In the San Joaquin Valley, the **cotton** crop was blooming and making good progress. As insect activity was increasing, treatments were made to control infestations. Second irrigations began for American Pima cotton. In Tulare County, corn was thriving. Corn for silage was tasseling out with later varieties still growing. With excess summer temperatures, more irrigation was needed for crop fields. Alfalfa continued to be cut and baled for hay. Cotton fields were growing well with warmer temperatures.

## FRUIT CROPS

Middle season varieties of **peaches**, **nectarines**, **plums**, **plouts**, and **apricots** were harvested. Irrigation continued to reduce heat stress on trees. Table and raisin **grape** varieties were developing well. **Cherry** orchards were being prepped for next year. **Persimmon** and **pomegranate** sizing increased. **Kiwifruit** development was ongoing. Gold Nugget **mandarins**, Valencia **oranges**, **tangelos**, **grapefruit**, and **lemon** harvests progressed. **Olive** tree fruit development continued. **Blueberry**, **blackberry**, and **strawberry** harvests were steady.

## NUT CROPS

Insecticide spraying took place where necessary. **Almond** hull split was ongoing. **Walnut** and **pistachio** nut fill continued.

## VEGETABLE CROPS

In Colusa, Sacramento, Solano, and Yuba counties, organic cherry **tomato** harvest began. Growers prepared for the upcoming processing tomato harvest. In Stanislaus County, **broccoli** was harvested and spent fields were shredded. In Tulare County, **cucumbers**, **eggplants**, **bell peppers**, **garlic**, **onions**, serrano **peppers**, **tomatillos**, and **zucchini** were harvested. Sweet **corn** was sold at roadside stands. Local stands continued selling summer **squash**.

## LIVESTOCK

Rangeland and non-irrigated pasture were in poor to fair condition. Irrigated range was in good to excellent condition. Bees were active in melon and sunflower fields. Sheep grazed on fallow fields and retired farmland. Cattle grazing on deteriorating range received supplemental hay.

**NOTICE: USDA NASS has changed the base temperature used to calculate growing degree days (found in the table below) from 60 °F to 50 °F.**

CALIFORNIA CROP WEATHER – WEEK ENDING JULY 3, 2022											
STATIONS	TEMPERATURE				GROWING DEGREE DAYS AT 50 °F BASE <sup>1</sup>		RAIN DAYS <sup>2</sup>	PRECIPITATION <sup>3</sup>			
	Average for Week Ending Jul 3, 2022	Departure from Normal <sup>4</sup>	High	Low	This Year	Normal Year <sup>4</sup>	This Season	This Week	This Season	Normal Season <sup>4</sup>	Normal Year <sup>4</sup>
					Jan 1 - Jul 3, 2022	Jan 1 - July 3, 2022	Oct 1 - Jul 3, 2022	Week Ending Jul 3, 2022	Oct 1 - Jul 3, 2022	Oct 1 - Jul 3	Oct 1 - Sept 30
-- Degrees Fahrenheit --				-- Number --		-- Days --	-- Inches of Precipitation --				
<b>North Coast</b>											
Eureka WFO	57	0	68	53	461	384	110	0.06	25.60	39.38	40.61
Ukiah	71	-2	100	52	1,516	1,374	64	0.00	19.55	34.60	35.07
Santa Rosa	66	-1	92	47	1,458	1,234	60	0.00	26.19	33.59	34.00
Napa State Hospital	65	-1	90	51	1,285	1,177	48	0.00	18.00	20.13	20.36
<b>Central Coast</b>											
San Francisco	61	-2	70	54	1,464	1,337	44	0.00	18.18	19.53	19.77
San Jose	66	-3	83	56	1,868	1,632	33	0.00	7.31	13.36	13.58
Salinas	63	1	73	53	1,697	1,267	30	0.00	7.31	12.49	12.66
Monterey	60	-1	71	53	1,402	1,136	40	0.00	10.65	16.13	16.36
Paso Robles	74	2	109	50	1,881	1,456	24	0.00	8.72	12.00	12.24
<b>Sacramento Valley</b>											
Redding	79	-2	104	60	2,337	1,980	60	0.00	18.86	32.88	33.70
Red Bluff	78	-2	102	57	2,345	1,973	47	0.00	12.66	22.83	23.25
Orland	NA	NA	NA	NA	NA	1,899	NA	NA	NA	21.05	21.52
Oroville	78	-1	105	58	2,396	2,009	50	0.00	17.37	25.44	25.84
Marysville	75	-2	104	55	2,151	1,865	42	0.00	8.49	19.91	20.21
Sacramento	75	0	104	56	2,078	1,742	43	0.00	14.03	17.81	18.10
<b>San Joaquin Valley</b>											
Stockton	74	-3	102	54	2,164	2,004	36	0.00	9.81	13.36	13.53
Modesto	75	-2	101	55	2,148	2,037	33	0.00	9.00	12.20	12.34
Merced Macready	78	1	105	54	2,194	1,896	28	0.00	7.45	11.75	11.87
Madera	78	-1	106	54	2,060	2,029	23	0.00	2.66	10.75	10.86
Fresno	83	2	107	58	2,687	2,282	24	0.00	6.30	10.91	11.05
Lemoore	79	1	108	55	2,280	2,036	20	0.00	4.03	7.14	7.23
Visalia	81	3	102	57	2,433	2,021	27	0.00	7.27	10.25	10.37
Bakersfield	85	2	105	63	2,691	2,467	21	0.00	5.42	6.31	6.40
<b>Cascade Sierra</b>											
Alturas	63	-2	96	36	423	465	63	0.00	7.46	10.80	11.72
Mount Shasta	67	1	92	47	695	581	78	0.05	18.84	36.67	37.86
Blue Canyon	67	0	82	51	764	545	66	0.00	65.28	61.61	62.80
Yosemite Valley	67	-3	81	56	678	833	47	0.00	26.95	39.47	40.65
<b>South Coast</b>											
Santa Maria	62	-1	76	52	1,302	1,312	25	0.00	7.81	13.21	13.42
Santa Barbara	66	2	76	52	1,673	1,428	26	0.00	10.54	17.15	17.38
Oxnard	65	0	74	58	1,768	1,744	25	0.00	11.65	12.82	13.05
Riverside	81	5	105	60	2,912	2,429	23	0.00	4.85	9.13	9.48
Los Angeles	69	1	79	62	2,415	2,123	27	0.00	10.19	12.08	12.33
San Diego	70	1	77	62	2,089	2,348	28	0.00	6.10	9.58	9.87
<b>Southeast Interior</b>											
Bishop	77	1	103	50	1,551	1,395	12	0.00	4.76	4.50	4.87
Daggett	91	3	109	72	3,109	2,771	9	0.00	1.09	3.14	3.80
Lancaster	84	4	105	65	2,164	1,864	16	0.00	4.10	6.55	6.86
Thermal	95	6	113	75	3,846	3,672	6	0.00	0.19	2.39	2.98
Blythe	96	3	113	77	4,197	3,919	5	0.00	0.28	2.60	3.58
Imperial	94	3	112	80	3,941	3,747	2	0.00	0.06	1.94	2.39

<sup>1</sup> Previously labeled as growing degree hours. The column title was corrected in the Sept 27, 2021 report. Additionally, degree days were previously calculated using a base of 60 degrees. The base temperature was changed to 50 degrees in the April 4, 2022 report.

<sup>2</sup> Total number of days with precipitation events this season.

<sup>3</sup> Rain or melted snow/ice.

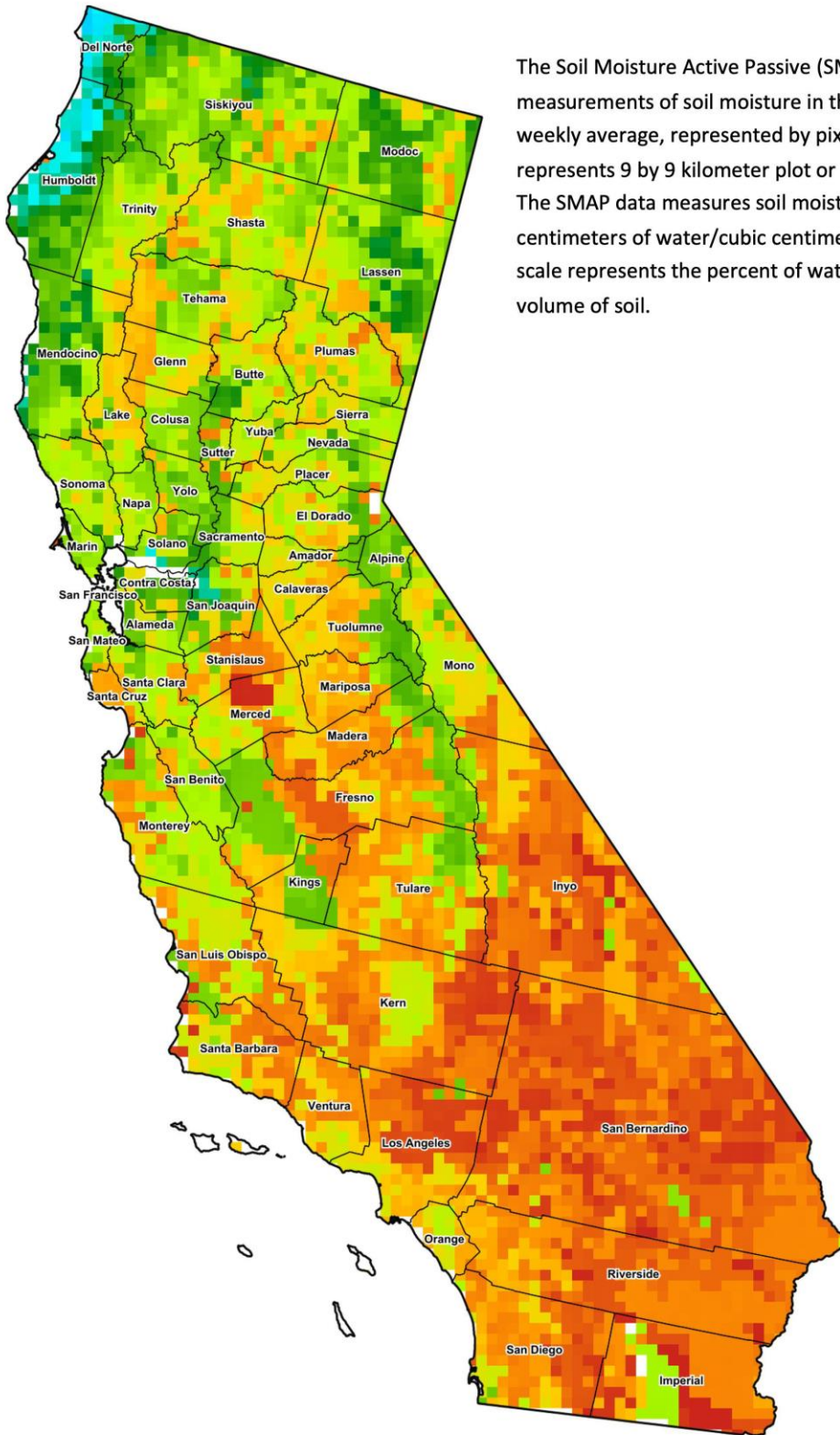
<sup>4</sup> Normal periods 1990-2020 used in departure from normal calculations.

Data retrieved from NOAA and NWS. Calculated by USDA NASS.  
All rights reserved.

### Reservoir Data from the California Department of Water Resources

Reservoir	Capacity	July 3, 2022			This Date Last Year	
		Storage	Percent of Capacity	Percent of Average	Storage	Percent of Capacity
		<i>Acre Feet</i>	<i>Percent</i>	<i>Percent</i>	<i>Acre Feet</i>	<i>Percent</i>
Shasta Lake	4,547,300	1,768,726	39	51	1,719,274	38
Lake Oroville	3,537,400	1,691,301	48	64	1,107,080	31
Trinity Lake	2,443,800	710,655	29	38	1,148,615	47
New Melones Reservoir	2,413,000	777,379	32	52	1,199,611	50
San Luis Reservoir	2,057,200	772,663	38	71	644,822	32
Don Pedro Reservoir	4,547,300	1,296,745	64	78	1,243,061	61

Source: [cdec.water.ca.gov/reportapp/javareports?name=DLYHYDRO](https://cdec.water.ca.gov/reportapp/javareports?name=DLYHYDRO)



The Soil Moisture Active Passive (SMAP) provides measurements of soil moisture in the root zone as a weekly average, represented by pixels. Each pixel represents 9 by 9 kilometer plot or about 20,000 acres. The SMAP data measures soil moisture in cubic centimeters of water/cubic centimeters of soil. The scale represents the percent of water in a given volume of soil.



**Drought Conditions from the U.S. Drought Monitor**

Time	Percent of Land in Drought Rating						Drought Severity (DSCI)
	None	D0	D1	D2	D3	D4	
Current	0.00	0.21	2.31	37.67	48.22	11.59	369
Last Week	0.00	0.21	2.31	37.67	48.22	11.59	369
3 Months Ago	0.00	0.00	6.35	53.40	40.25	0.00	334
One Year Ago	0.00	0.00	5.27	9.29	52.12	33.32	413

The U.S. Drought Monitor is jointly produced by the National Drought Mitigation Center at the University of Nebraska-Lincoln, the United States Department of Agriculture, and the National Oceanic and Atmospheric Administration. [droughtmonitor.unl.edu/CurrentMap/StateDroughtMonitor.aspx?CA](https://droughtmonitor.unl.edu/CurrentMap/StateDroughtMonitor.aspx?CA)