



California Crop Progress & Condition

Cooperating with the California Department of Food and Agriculture
Pacific Region • P.O. Box 1258 • Sacramento, CA 95812 • (916) 738-6600 • (855) 270-2722 FAX • www.nass.usda.gov/ca

WEEK ENDING: August 7, 2022
RELEASED: August 8, 2022

FREQUENCY: Weekly
VOL. 43 NO. 19

WEATHER

Average lows for California ranged from 51 to 68 along the coast, 51 to 59 in the mountains, 59 to 71 in the valley, and 60 to 80 in the desert. Average highs for the state ranged from 66 to 103 along the coast, 83 to 95 in the mountains, 101 to 111 in the desert, and 100 to 108 in the Central Valley.

FIELD CROPS

In Stanislaus County, **corn** was harvested for silage. **Sudan grass** fields were sprayed for weeds. **Alfalfa** was harvested for hay and silage. In the San Joaquin Valley, **cotton** continued to progress with good boll-set and moderate insect activity. In Tulare County, cotton fields were being cultivated and irrigated. Corn silage harvest continued. Sudan grass and alfalfa fields were being cut, dried, and baled. **Dry bean** fields continued to be treated for weeds and insects.

FRUIT CROPS

Stone fruit harvest was well underway. **Peach, nectarine, and plum** harvests remained steady. Irrigation continued to reduce heat stress. Raisin **grape** varieties steadily developed. Various table grape varieties were harvested. **Persimmons, kiwifruits, Asian pears, grapefruits, and lemons** continued to develop. Some kiwifruit orchards were shaded to protect the fruit from burning. **Pomegranates** matured and producers expect harvest to begin soon. **Olives** continued to develop.

NUT CROPS

Almond harvest was well underway. Weed spraying and orchard cleanup continued in preparation for harvest. **Walnut** and **pistachio** development continued.

VEGETABLE CROPS

In Stanislaus County, **tomato** harvest continued and harvested fields were disced. **Garlic** was harvested and placed in bins to dry. **Sweet corn** was sprayed for earworms. In Tulare County, sweet corn, **peppers, okra, salad greens, herbs, onions, tomatoes, and other vegetables** were harvested and sold at local stands and markets.

LIVESTOCK

Rangeland and non-irrigated pasture continue to be in fair to poor condition due to the lack of water and extreme heat. Irrigated range remained in good to excellent condition. Sheep grazed on fallow fields and retired farmland. Bees were active in sunflower fields. Cattle supplemental feeding continued to compensate for poor quality range.

NOTICE: USDA NASS has changed the base temperature used to calculate growing degree days (found in the table below) from 60 °F to 50 °F.

| CALIFORNIA CROP WEATHER – WEEK ENDING AUGUST 7, 2022 | | | | | | | | | | | |
|--|-------------------------------------|------------------------------------|------|--------------|--|--------------------------|-------------------------------|----------------------------|---------------------|----------------------------|--------------------------|
| STATIONS | TEMPERATURE | | | | GROWING DEGREE DAYS AT 50 °F BASE ¹ | | RAIN DAYS ² | PRECIPITATION ³ | | | |
| | Average for Week Ending Aug 7, 2022 | Departure from Normal ⁴ | High | Low | This Year | Normal Year ⁴ | This Season | This Week | This Season | Normal Season ⁴ | Normal Year ⁴ |
| | | | | | Jan 1 - Aug 7, 2022 | Jan 1 - August 7, 2022 | Oct 1 - Aug 7, 2022 | Week Ending Aug 7, 2022 | Oct 1 - Aug 7, 2022 | Oct 1 - Aug 7 | Oct 1 - Sept 30 |
| -- Degrees Fahrenheit -- | | | | -- Number -- | | -- Days -- | -- Inches of Precipitation -- | | | | |
| North Coast | | | | | | | | | | | |
| Eureka WFO | 59 | 0 | 66 | 51 | 787 | 682 | 116 | 0.00 | 26.30 | 39.57 | 40.61 |
| Ukiah | 77 | 2 | 101 | 56 | 2,474 | 2,272 | 66 | 0.00 | 19.58 | 34.62 | 35.07 |
| Santa Rosa | 69 | 1 | 92 | 52 | 2,100 | 1,864 | 60 | 0.00 | 26.19 | 33.61 | 34.00 |
| Napa State Hospital | 70 | 3 | 84 | 56 | 1,888 | 1,777 | 49 | 0.01 | 18.01 | 20.14 | 20.36 |
| Central Coast | | | | | | | | | | | |
| San Francisco | 68 | 4 | 81 | 59 | 1,996 | 1,848 | 45 | 0.01 | 18.19 | 19.54 | 19.77 |
| San Jose | 73 | 3 | 89 | 62 | 2,600 | 2,332 | 33 | 0.00 | 7.31 | 13.37 | 13.58 |
| Salinas | NA | NA | NA | NA | NA | 1,738 | NA | NA | NA | 12.51 | 12.66 |
| Monterey | 67 | 5 | 77 | 58 | 1,905 | 1,563 | 40 | 0.00 | 10.65 | 16.15 | 16.36 |
| Paso Robles | 78 | 4 | 103 | 57 | 2,821 | 2,298 | 24 | 0.00 | 8.72 | 12.08 | 12.24 |
| Sacramento Valley | | | | | | | | | | | |
| Redding | 88 | 5 | 108 | 69 | 3,610 | 3,170 | 60 | 0.00 | 18.86 | 32.96 | 33.70 |
| Red Bluff | 85 | 4 | 106 | 69 | 3,563 | 3,110 | 47 | 0.00 | 12.66 | 22.89 | 23.25 |
| Orland | NA | NA | NA | NA | NA | 2,918 | NA | NA | NA | 21.09 | 21.52 |
| Oroville | 84 | 4 | 104 | 68 | 3,586 | 3,089 | 50 | 0.00 | 17.37 | 25.48 | 25.84 |
| Marysville | 81 | 3 | 104 | 62 | 3,229 | 2,875 | 42 | 0.00 | 8.49 | 19.92 | 20.21 |
| Sacramento | 80 | 4 | 102 | 62 | 3,141 | 2,681 | 43 | 0.00 | 14.03 | 17.81 | 18.10 |
| San Joaquin Valley | | | | | | | | | | | |
| Stockton | 80 | 2 | 102 | 59 | 3,209 | 3,010 | 36 | 0.00 | 9.81 | 13.36 | 13.53 |
| Modesto | 80 | 1 | 100 | 61 | 3,207 | 3,069 | 34 | 0.00 | 9.01 | 12.20 | 12.34 |
| Merced Macready | 83 | 4 | 103 | 63 | 3,335 | 2,932 | 28 | 0.00 | 7.45 | 11.75 | 11.87 |
| Madera | 83 | 3 | 104 | 60 | 3,196 | 3,103 | 23 | 0.00 | 2.66 | 10.76 | 10.86 |
| Fresno | 86 | 3 | 105 | 68 | 3,984 | 3,478 | 25 | 0.05 | 6.35 | 10.94 | 11.05 |
| Lemoore | 86 | 6 | 107 | 67 | 3,496 | 3,114 | 20 | 0.00 | 4.03 | 7.15 | 7.23 |
| Visalia | NA | NA | NA | NA | NA | 3,100 | NA | NA | NA | 10.25 | 10.37 |
| Bakersfield | 88 | 3 | 103 | 71 | 4,021 | 3,708 | 21 | 0.00 | 5.42 | 6.31 | 6.40 |
| Cascade Sierra | | | | | | | | | | | |
| Alturas | 73 | 5 | 95 | 51 | 1,167 | 1,125 | 64 | 0.03 | 7.49 | 11.12 | 11.72 |
| Mount Shasta | 74 | 5 | 94 | 52 | 1,527 | 1,255 | 83 | 1.15 | 20.26 | 36.97 | 37.86 |
| Blue Canyon | 71 | 0 | 83 | 59 | 1,548 | 1,285 | 67 | 0.09 | 65.37 | 61.68 | 62.80 |
| Yosemite Valley | NA | NA | NA | NA | NA | 1,682 | NA | NA | NA | 39.74 | 40.65 |
| South Coast | | | | | | | | | | | |
| Santa Maria | 66 | 2 | 79 | 57 | 1,808 | 1,829 | 25 | 0.00 | 7.81 | 13.24 | 13.42 |
| Santa Barbara | 69 | 3 | 80 | 57 | 2,259 | 2,006 | 26 | 0.00 | 10.54 | 17.17 | 17.38 |
| Oxnard | 68 | 1 | 76 | 59 | 2,334 | 2,358 | 25 | 0.00 | 11.65 | 12.84 | 13.05 |
| Riverside | 83 | 3 | 103 | 68 | 3,990 | 3,459 | 24 | 0.00 | 4.88 | 9.26 | 9.48 |
| Los Angeles | 71 | 1 | 79 | 64 | 3,126 | 2,834 | 27 | 0.00 | 10.19 | 12.12 | 12.33 |
| San Diego | 74 | 2 | 80 | 68 | 2,824 | 3,100 | 28 | 0.00 | 6.10 | 9.66 | 9.87 |
| Southeast Interior | | | | | | | | | | | |
| Bishop | 77 | -1 | 101 | 60 | 2,619 | 2,400 | 16 | 0.71 | 5.64 | 4.68 | 4.87 |
| Daggett | 90 | 0 | 105 | 75 | 4,572 | 4,183 | 13 | 0.00 | 1.71 | 3.45 | 3.80 |
| Lancaster | 87 | 4 | 104 | 65 | 3,455 | 3,021 | 16 | 0.00 | 4.10 | 6.68 | 6.86 |
| Thermal | 95 | 3 | 111 | 77 | 5,389 | 5,135 | 6 | 0.00 | 0.19 | 2.54 | 2.98 |
| Blythe | 95 | -1 | 110 | 77 | 5,834 | 5,518 | 6 | 0.29 | 0.57 | 2.91 | 3.58 |
| Imperial | 94 | 0 | 110 | 80 | 5,514 | 5,288 | 2 | 0.00 | 0.06 | 2.07 | 2.39 |

¹ Previously labeled as growing degree hours. The column title was corrected in the Sept 27, 2021 report. Additionally, degree days were previously calculated using a base of 60 degrees. The base temperature was changed to 50 degrees in the April 4, 2022 report.

² Total number of days with precipitation events this season.

³ Rain or melted snow/ice.

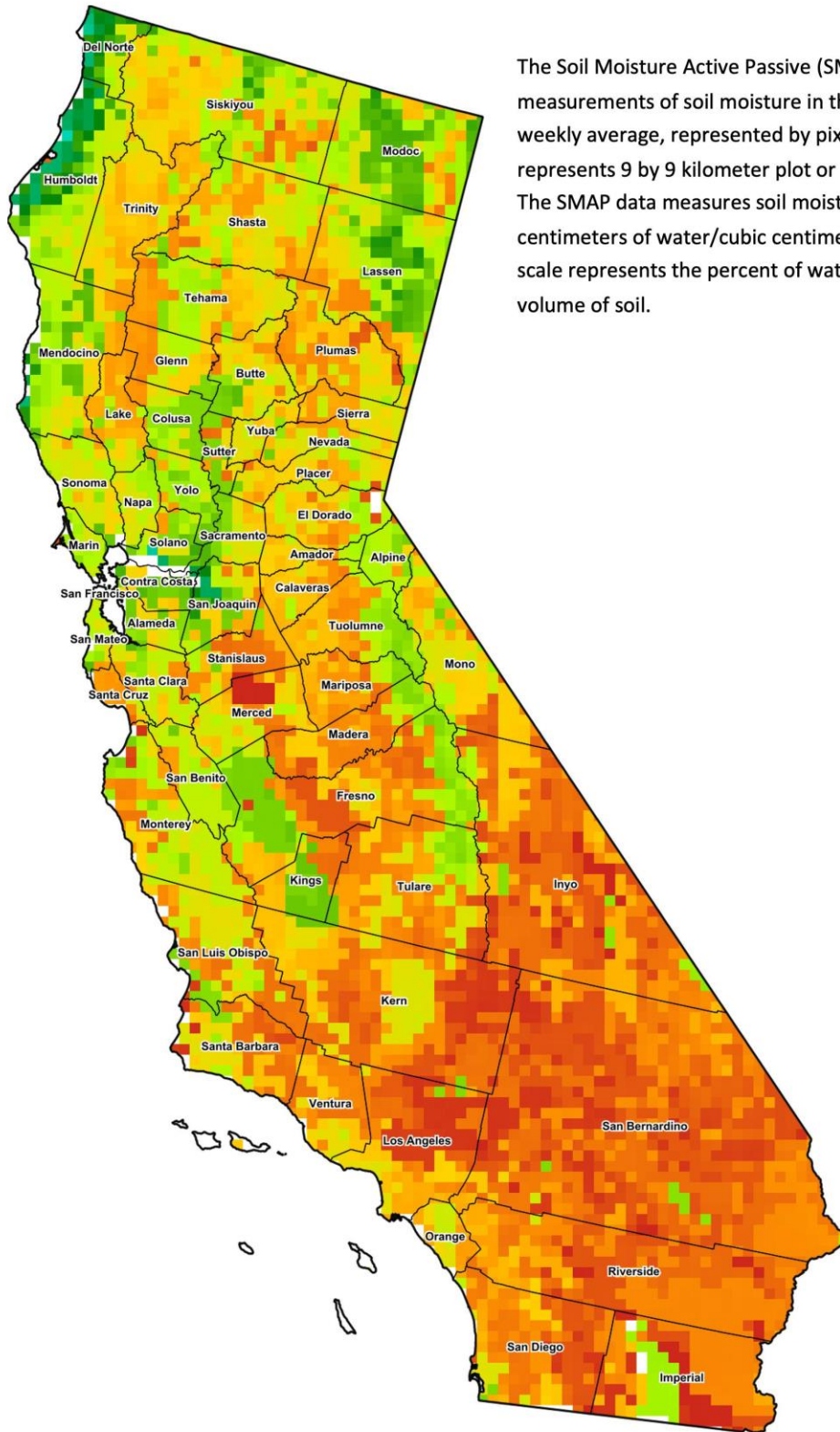
⁴ Normal periods 1990-2020 used in departure from normal calculations.

Data retrieved from NOAA and NWS. Calculated by USDA NASS.
All rights reserved.

Reservoir Data from the California Department of Water Resources

| Reservoir | Capacity | August 7, 2022 | | | This Date Last Year | |
|-----------------------|-----------|------------------|---------------------|--------------------|---------------------|---------------------|
| | | Storage | Percent of Capacity | Percent of Average | Storage | Percent of Capacity |
| | | <i>Acre Feet</i> | <i>Percent</i> | <i>Percent</i> | <i>Acre Feet</i> | <i>Percent</i> |
| Shasta Lake | 4,547,300 | 1,661,472 | 36 | 55 | 1,388,402 | 31 |
| Lake Oroville | 3,537,400 | 1,423,309 | 40 | 62 | 853,364 | 24 |
| Trinity Lake | 2,443,800 | 651,996 | 27 | 38 | 966,831 | 40 |
| New Melones Reservoir | 2,413,000 | 694,594 | 29 | 49 | 993,556 | 41 |
| San Luis Reservoir | 2,057,200 | 623,971 | 31 | 73 | 373,443 | 18 |
| Don Pedro Reservoir | 4,547,300 | 1,184,402 | 58 | 76 | 1,131,095 | 56 |

Source: cdec.water.ca.gov/reportapp/javareports?name=DLYHYDRO



Drought Conditions from the U.S. Drought Monitor

| Time | Percent of Land in Drought Rating | | | | | | Drought Severity (DSCI) |
|--------------|-----------------------------------|------|------|-------|-------|-------|-------------------------|
| | None | D0 | D1 | D2 | D3 | D4 | |
| Current | 0.00 | 0.22 | 2.31 | 37.66 | 47.70 | 12.12 | 369 |
| Last Week | 0.00 | 0.22 | 2.31 | 37.66 | 47.07 | 12.74 | 370 |
| 3 Months Ago | 0.00 | 0.00 | 4.82 | 54.67 | 40.51 | 0.00 | 336 |
| One Year Ago | 0.00 | 0.00 | 4.93 | 6.69 | 41.93 | 46.45 | 430 |

The U.S. Drought Monitor is jointly produced by the National Drought Mitigation Center at the University of Nebraska-Lincoln, the United States Department of Agriculture, and the National Oceanic and Atmospheric Administration. droughtmonitor.unl.edu/CurrentMap/StateDroughtMonitor.aspx?CA